

The Tattler

Rotary Club of La Mesa

Volume 2020-21, No.335 Meeting Date: 7/14/21
Wednesday's @ Noon
La Mesa Community Center,
4975 Memorial Drive, La Mesa CA 91942



www.LaMesaRotary.org

San Diego County DA Leonard Trinh

Leonard Trinh has been a prosecutor for 16 years. Since 2017, he has been the lead hate crimes prosecutor for the San Diego District Attorney's Office, and serves as the Chair of the San Diego Regional Anti-Hate Crime Coalition and the San Diego Hate Crime Intelligence Committee.

Hate crimes have gradually increased over the last several years, both in San Diego and across the United States. Come learn what exactly constitutes a hate crime in California, and how far the First Amendment goes in protecting freedom of speech.

Leonard Trinh

Special Operations Division



Lunch Time Service Opportunities

July 7, 2021

Pledge	Kathy Olsen
Thought	Louise Herr-Marshall
4-Way	Scott Elam

July 14, 2021

Pledge	Gary Clasen
Thought	Ryan Barnhill
4-Way	Ron Morell

July 21, 2021

Pledge	Steven Looser
Thought	Dale Bailey
4-Way	Guy Elam

July 28, 2021

Pledge	Bonnie Welch
Thought	Mike Fellows
4-Way	Jack Dargitz

**If you cannot perform
your assigned duty,
please arrange for a
replacement.**

Important Dates:

July 14th Club Meeting **IN PERSON – LA MESA COMMUNITY CENTER!**

Guest Speaker: San Diego County DA – Leonard Trinh

July 21st Club Meeting **ZOOM – 12:30pm**

Guest Speaker: Crisis House – Patricia Zamora

July 28th Club Meeting **IN PERSON – LA MESA COMMUNITY CENTER!**

Guest Speaker:

August 3rd La Mesa Rotary Board Meeting – 6:00pm via ZOOM

August 4th Club Meeting **ZOOM – 12:30pm**

Guest Speaker:

Rotary International Embraces Diversity

At its June meeting, the RI Board of Directors, with guidance from the Diversity, Equity and Inclusion (DEI) Taskforce, took additional steps to ensure our organization values and lives the principals of diversity, equity and inclusion by revisiting and strengthening Rotary's 2019 DEI statement. The result is a new *Commitment to Diversity Equity and Inclusion* adopted in June 2021:

“At Rotary, we understand that cultivating a diverse, equitable, and inclusive culture is essential to realizing our vision of a world where people unite and take action to create lasting change.

We value diversity and celebrate the contributions of people of all backgrounds, across age, ethnicity, race, color, disability, learning style, religion, faith, socioeconomic status, culture, marital status, languages spoken, sex, sexual orientation, and gender identity as well as differences in ideas, thoughts, values, and beliefs.

Recognizing that individuals from certain groups have historically experienced barriers to membership, participation, and leadership, we commit to advancing equity in all aspects of Rotary, including in our community partnerships, so that each person has the necessary access to resources, opportunities, networks, and support to thrive.

We believe that all people hold visible and invisible qualities that inherently make them unique, and we strive to create an inclusive culture where each person knows they are valued and belong.”

SERVICE PROJECT OPPORTUNITY

Hope for the Homeless

Food Bank Sandwich Making

Friday, July 16, 4:45pm (5-6pm)

**Option after to join them to go downtown
San Diego to distribute**

The Journey Food Bank is located on the campus of Journey Community Church at 8363 Center Drive, La Mesa, CA 91942.

Look for the Journey Food Ministries sign on the southwest corner of the shopping center at the corner of Center Drive and Hercules Street.



Visit the La Mesa Rotary online! www.LaMesaRotary.org
Or find us on Facebook! Just search for La Mesa Rotary.

La Mesa Rotary TATTLER Editor: Scott Elam
elamshallmark@cox.net

La Mesa Rotary 2020-21 Board of Directors

President:
Sue Richardson

President Elect:

Past President:
Scott Elam

Secretary:
Kathy Olsen

Treasurer:
Ron Morell

2021-23 Directors:
Nathan Oestrich
Ryan Barnhill
Ben Hamilton

2020-22 Directors:
Dale Bailey
Mark Matthews
Becki Schwartz

Foundation Chair
Bill Ashman

New Generations:
Mark Matthews

Speakers Chair:
Bill Ashman

Membership:
Jen Flynn
Marsha Starr

Social Chair:
Marsha Darling



SUNDAYS AT SIX



Solid Brass
~Funk, Soul, R&B~
July 11



Sonic Epidemic
~Horn Tunes of the 70s~
July 18



Breez'n
~Variety~
July 25



*Experience the authentic taste of great tacos,
enchiladas, burritos, and more.*

On-site 5 PM - 7 PM

6:00 - 7:00 PM at Harry Griffen Park
9550 Milden Street, La Mesa CA
619.667.1300 | friends@lamesaparks.org

This activity is operated in accordance with County and State health guidelines for outdoor events.



La Mesa Rotary School Supply Drive

Martin would like to start his Fall School Supply Drive this month! We have seen Staples, Office Depot, Wal Mart & Target start with some of their Back-To-School Specials!

If you get a chance to buy any of these promotional school supplies please bring them to the Community Center when we meet for lunch!

San Diego Padres

Rotary District 5340 is teaming up with the [San Diego Padres](#) to offer four top-tier games with special seats at [Petco Park](#) reserved exclusively for Rotary members. Rotary has a long history of involvement with the Major League Baseball franchise. Get back to the ballpark with your fellow Rotarians and reserve your ticket(s) today:

1. [Padres vs. Cubs - Tuesday, June 8, 2021](#)
2. [Padres vs. Nationals - Tuesday, July 6, 2021](#)
3. [Padres vs. Marlins - Tuesday, Aug.10, 2021](#)
4. [Padres vs. Astros - Friday, Sept. 3, 2021](#)

Tickets are first-come, first-serve. **Limit per person five (5) game tickets.** Electronic tickets will be emailed to you by Erika, District Admin. Please allow two (2) business days for email. Check the District website for more information.



LA MESA PARK &
RECREATION FOUNDATION

FREE

MOVIES IN THE PARK



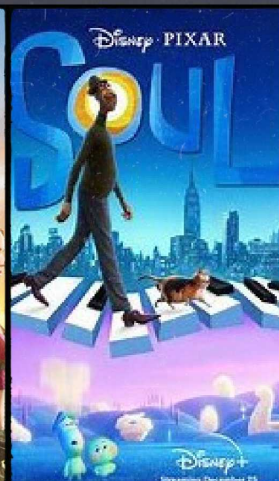
July 30

Dive-In Movie
La Mesa Municipal Pool
5100 Memorial Dr



August 13

MacArthur Park
La Mesa
4900 Memorial Dr



September 24

La Mesita Park
La Mesa
8855 Dallas St

All movies start 15 minutes after sunset

For more information call 619.667.1300

www.cityoflamesa.us/specialevents

www.lamesaparks.org



1725