

HORIZONS

Central Blue Mountains Rotary

Effective - Energetic - Enterprising - Empowered

Rotary District 9685 - Australia

Wednesday, March 13, 2019



Please turn to the next page

Women in Rotary




Some of Central Blue Mountains women Rotarians were able to see induction of our newest member, Heather Knight, on Wednesday, March 06.

*From left to right back row: Justine Murphy, Heather Knight, Rhonda Steed, Ann Montague
Front row: Elaine Manners, Maria Hopwood, Jennifer Scott, Ava Emdin.*

Heather Knight was congratulated by co-president Ava Emdin and president elect Justine Murphy

WhatsOn....

March

- Wednesday 13:** Behind the Scenes at Scenic World followed by dinner at the Old City Bank Brasserie, Katoomba. Can't make the tour at Scenic World? Come along for dinner.
- Saturday 16:** President-Elect Training Seminar (PETS)
- Wednesday 20:** Guest speaker: Jeremy Scott - Adventurer
- Saturday 23:** Woolworths, Katoomba - catering van
- Wednesday 27:** Central Blue Rotary gets together with Winmalee Lions
- Friday-Sunday 29-31:** District Conference, Newcastle.

April

- Thursday 04:** BM Grammar - Compassion catering
- Sunday 07:** 'Let's talk about CBM Rotary'
- Friday 12 to Sunday May 12:** Sculptures at Scenic World
- Saturday 13:** 'Lanterns on the Lake' - W. Falls Lake
- Sunday 14:** District Assembly
- Saturday 27:** Woolworths, Katoomba - catering van

Other important dates

- Saturday May 4:** Blue Ball - Carrington Hotel, Katoomba
- Saturday July 6:** District Changeover - Hornsby RSL Club



Guest Speaker Wednesday, March 20

Adventurer - Jeremy Scott



Jeremy wasn't only born with a huge hole in his heart, but with an insatiable craving for adventure. His desire to explore the world inspired a move to London. From here, he travelled extensively throughout Africa, Asia, Europe and South America. Despite seeing so much of the world, he felt there was so much more to explore, and on 5 October 2011, he set off for what turned out to be a 2½ year 51,916km solo bike ride around the globe. At the completion of that life changing journey, Jeremy wrote his first book "The Long Road From A Broken Heart" and now dedicates his life to inspire others. Jeremy has raised over \$70,000 for a number of different charities. He continues to support these charities through speaking engagements and book sales. Jeremy is a recipient of the Australian Heart Foundation 'Heart Hero' Award and is also an Ambassador for Waterline Challenge.

Lower Blue's Op Shop

Open for Business



Rotary Recycles

it's a new and exciting venture initiated by Lower Blue Mountains Rotary.

Shop 3, 156 Great Western Highway is not to be missed as you go through Blaxland shopping centre.

Trading hours are Monday to Friday, 10.00am to 4.00pm, with the first day of trading being today, Monday March 11.

Previously, the premises were used for 21 years by Bibles for Mission as an opportunity shop, until December 2018.

District Governor 9685 Susan Wakefield said Rotarians from Lower Blue see this as an opportunity to assist our communities in several ways.

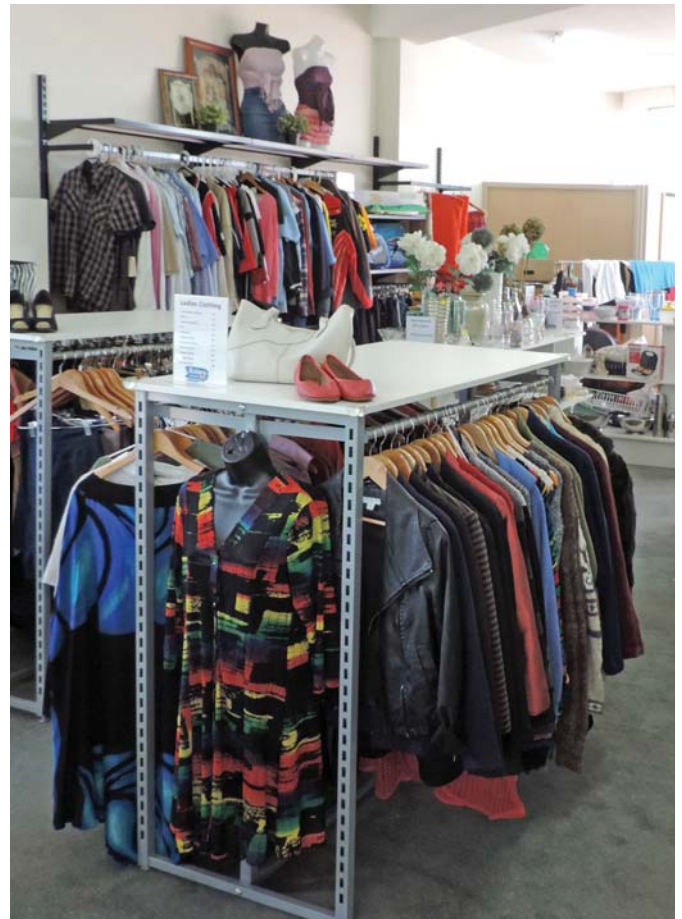
"While offering good quality used clothing and bric-a-brac at reasonable prices to residents of Blaxland and nearby towns, Lower Blue Mountains Rotary will be able to add to its service fundraising and assist more communities locally and internationally.

"There is a core of dedicated volunteers to staff the shop on a half day basis. Volunteers and stock will all be welcomed with open arms.

"Club members have spent an enormous amount of time and energy in setting up the shop, the fitting room and stock room, and sorting and arranging the vast amount of donations received so far."

A low key official launch will be held for Rotarians and friends on Friday March 15 from 6.00pm to 8.00pm and Central Blue friends are more than welcome to attend.

Rotary Recycles Quality Stuff at Bargain Prices



Six Great Reasons to do RLI



The success of Rotary Leadership Institute is because it delivers skills and knowledge that Rotarians can apply straight away in their clubs.

1. It hones leadership skills
2. Builds Rotary knowledge
3. Gives a perspective about where Rotary has been and where it is now
4. Shares a vision of what Rotary can be
5. Networking with Rotarians from other clubs
6. Provides opportunities for partnering in service

The two part course is held on a weekend or separately on Saturdays or Sundays to meet demand.

Morning tea and lunch are provided.

Each day starts at 8:00am and finishes around 4.00pm.

Courses 51 and 52 are open for registration:

- RLI 51 runs Saturday 4th and 18th of May at the District Office, Thornleigh.
- RLI 52 runs over the weekend of 1-2 June at a location to be decided in the Penrith/Lower Mountains area.

Register at rli.rotarydistrict9685.org.au






Rotary Satellite Club of Ryde

22nd to 24th March 2019

REGISTER NOW

www.e-quiz.org.au

All proceeds to



ShelterBox
AUSTRALIA



Mountain Ghost

The original Scenic Railway was used to bring coal from the Megalong Valley. At its busiest there were 40 mines in the area. A railway was an efficient way to get the coal up to Katoomba. In the 1920s with the drop in price of shale and coal the mines closed and the railway remained.

SCENIC WORLD

The Mountain Ghost has lived in the mountains for ages. As long as he has been there so has Scenic World. But the Scenic World he knew in his youth (he was young once) has changed and for the better. He recently had a visit and was mightily impressed. He did miss the revolving restaurant.

There are four parts to Scenic World. The Railway, The Skyway, The Cableway and the Scenic Walkway at the bottom.

The Railway claims to be the steepest railway in the world. Well technically it may not be a railway as at some parts of the trip it is 52 degrees with an option to increase to 64 degrees.

In the Ghost's opinion the only thing steeper than this would be skydiving. Here is a thought for the Hammon Family, Scenic bungy jumping and Harbour Bridge Walks. (The Ghost notes they have already taken up the Harbour Bridge walk suggestion).

I am sure the Ghost's readers know the history of Scenic World but what was there before Scenic World?

It started in the 1870s and 1880s by John North who could be described as the father of modern Katoomba – well, modern by the Ghost's standards. It started as a coal mine and shale for kerosene.

The original railway was used to bring coal from the Megalong Valley. At its busiest there were 40 mines in the area. A railway was an efficient way to get the coal up to Katoomba. In the 1920s with the drop in price of shale and coal the mines closed and the railway remained.

During WW2 many US Troops on R & R would visit the Blue Mountains. It became popular to ask for a lift up in the railway. In 1944, Harry Hammon organised recreational trips on the railway. These trips grew into a thriving tourism business which became Scenic World! Scenic World is still a family business managed by the Hammon family.

The Skyway was built in 1958 and carried passengers across the gorge above Katoomba Falls, 270m above the valley floor. A new cabin was used in 2004. In 2005 a new station was opened on the opposite cliff face. This allowed passengers to disembark and walk to Echo Point if they wished. A new, bigger cabin was launched in 2017.

The Cableway was opened in 2000 and carries 84 passengers for 510 metres to the bottom station. The actual descent is 200 metres to Jamison Valley.

The Ghost loves the Walkway. It is 2.4km of boardwalk through the rain forest. It is a great place to see wildlife including plenty of lyrebirds and wallabies.

Scenic World really do some great promotions. A Sculpture Exhibition takes place at Scenic World all along the walkway each year. This has also become a very successful and busy tourist attraction. What was a small exhibit has now grown to 25 sculptures from local and international artists bringing in thousands of tourists every April and May.

The Ghost has another suggestion for Scenic World. He thinks a dinosaur exhibition among the ancient rain forest would be a great success.

So if you have not been to Scenic World in the last five years then do yourself a favourand pay a visit.



The Mountain Ghost remembers when the Scenic Railway was known as "The Mountains Devil".



The Ghost loves the Walkway. It is 2.4km of boardwalk through the rain forest.

Join us at the Rotary Blue Ball



Artist: Tanya Loviz



Carrington Hotel, Katoomba
May 4, 2019- 7.00pm for 7.30pm
\$145 per person
Three-course dinner and wine
Dress: Formal with a hint of blue

Supporting
local Rotary mental health projects

Central Blue Mountains

Rotary



RSVP- April 24, 2019

Booking essential: <https://www.trybooking.com/BBHEK>

Contact: Ray Wiles- 0409 845 415- raymar40@bigpond.com

Please turn to the next page

A Real Money Earner

Rotary's Festival Duck Race

Rotary's Rubber Duck Race at the Cowra Festival of International Understanding on March 16 will take place on the Lachlan River at 6.00pm.

Rotary Duck Race Coordinator, Bob Griffiths is excited about this year's event.

"We've increased the prize money for the race with more than \$1000 cash on offer. We've also kept the ticket price at \$5 to ensure everyone in the family can join in the fun and have their very own duck in the Race," he said.

"Cowra businesses haven't been forgotten either, with corporate ducks available online for \$50 through www.cowrabusinesschamber.com.au/events.

Businesses are encouraged to buy their duck soon so they have time to decorate it before race day."

Tickets for the small ducks can be purchased from Cowra Council, Cowra Visitor's Centre, Bendigo Bank or your friendly Rotary members outside Woolies on Friday and Saturday.

The 2019 Cowra Festival Duck Race is coordinated by the Rotary Club of Cowra with the assistance of the Cowra Youth Council, Cowra SES, Bendigo Bank and Cowra Business Chamber.

Proceeds from the race will go towards Rotary International projects and World Vision's Duck Giving Program.



Story from the Cowra Guardian March 8



SAVE THE DATE!

Join us for dinner with Rotary
International President for
2019-2020, Mark Daniel
Malone



**Monday
23rd September 2019**

Rotary International President 2019-2020
Mark Daniel Malone will be in Sydney to
address a special dinner to be held at Epping
Club on Monday, September 23, 2019.

This is an opportunity for Rotarians and guests
to meet and hear from our international leader.
Further details and how to register will be
advised shortly.

For more information contact
PDG Gina Growden 0412 128 106 or
gina.growden@bigpond.com



...that's all folks