

Cycle Dindi M

Over the hills and not so far away

SATURDAY 1 APRIL 2023

A charity bicycle event along the Great Victorian Rail Trail

Registrations open January 2023
E: cycledindi23@gmail.com

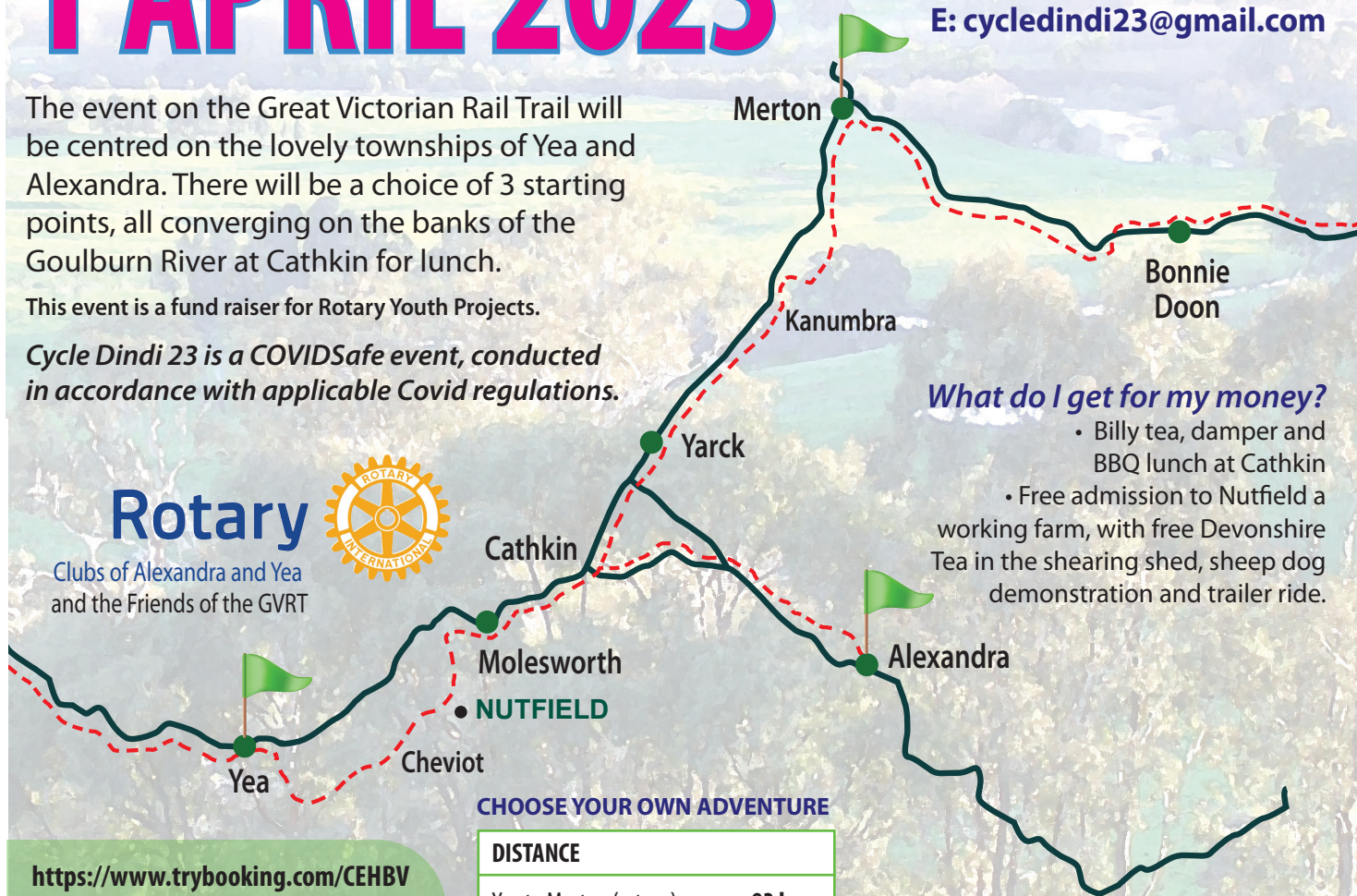
The event on the Great Victorian Rail Trail will be centred on the lovely townships of Yea and Alexandra. There will be a choice of 3 starting points, all converging on the banks of the Goulburn River at Cathkin for lunch.

This event is a fund raiser for Rotary Youth Projects.

Cycle Dindi 23 is a COVIDSafe event, conducted in accordance with applicable Covid regulations.

Rotary

Clubs of Alexandra and Yea
and the Friends of the GVRT



What do I get for my money?

- Billy tea, damper and BBQ lunch at Cathkin
- Free admission to Nutfield a working farm, with free Devonshire Tea in the shearing shed, sheep dog demonstration and trailer ride.

CHOOSE YOUR OWN ADVENTURE

DISTANCE	
Yea to Merton (return)	93 kms
Merton to Yea (return)	93 kms
Merton to Cathkin (return)	51 kms
Yea to Cathkin (return)	42 kms
Yea to Alexandra (return)	68 kms
Alexandra to Yea (return)	68 kms
Alexandra to Cathkin (return)	26 kms

<https://www.trybooking.com/CEHBV>

How Much?

Adult \$45
Senior \$35
Student \$10



- Under school age free
- SNR – relevant Seniors' card must be held
- Group discount available on request

Interested?

contact Melinda (Alexandra) 0418 378 806

Julie (Yea) 0447 762 557

or Ross (Mansfield) 0439 046 199

www.rotaryalexandra.org.au

www.yearotary.org.au

Cindy McLEISH MP
State Member for EILDON

