

February 1, 2019
Volume 4 , Issue 15

The Traveler

2018-19 ROTARY LEADERSHIP

ROTARY INTERNATIONAL

Barry Rassin
President

DISTRICT 5180
Jack Arney
District Governor

Joe Scheimer
Assistant Governor Area 6

CLUB OFFICERS/ DIRECTORS

Carol Langley
President

Leigh-Ann Reinero
President Elect

Sara Thornros
Secretary

David Kneitzer
Treasurer

Kwame Acquah
Membership Chair

Megan Ham
Service Director

Admin. Director
Christie Harrison

Eric James
Public Image Director

JoAnne Tanner
Immediate Past President

Mike Reinero
Club Advisor



Rotary
Club of Greater Sacramento
Passport One

Where No One has Gone Before

PASSPORT TO
ROTARY'S FUTURE



I am so excited to watch the Super Bowl this weekend. I will be rooting for my favorite team, the New Orleans Saints. They had a great season and did well in the play-offs...

What? You're kidding—The ref didn't see interference? Unbelievable!

If you Google "*Worst Officiating Call in NFL History*," you will see the interference call

that didn't happen when the Saints played the Rams. All we can do at this point is to accept the error and watch the game this Sunday. This is the worst thing that has ever happened to New Orleans! (except for the other thing in 2005)



CLUB MEETING FEBRUARY 7th

Ramada Inn
2600 Fulton Ave.
6:00 p.m. to 8:00 p.m.

Wear RED to the meeting if possible

RSVP to carollangley7@gmail.com



Our own **Kwame Acquah**, Chair of the District 5180
Peace Committee, will be our speaker

FEBRUARY IS CONFLICT PREVENTION/RESOLUTION MONTH

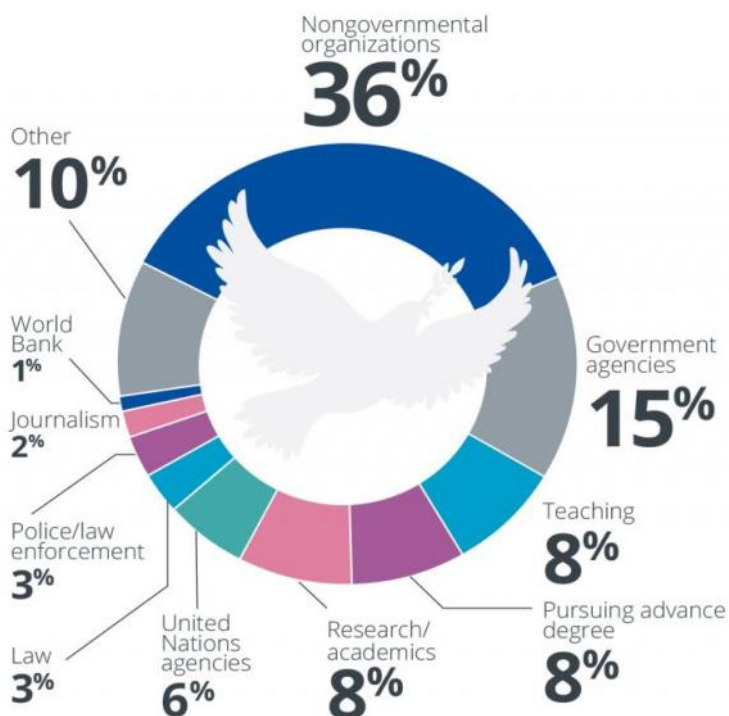
Rotary International's Peace component can be confusing. How is "peace" defined in the Rotary dictionary? Does it mean we want Rotarians to go to Afghanistan and negotiate peace with the Taliban? I think it is safe to say that most Rotarians wouldn't volunteer to be on that committee. However, the regional and local conflicts around the world have underscored the need for professionals skilled at creating peace.

ROTARY PEACE CENTERS

Rotary created the Rotary Peace Centers in 2002 to identify highly qualified professionals to become agents of peace. Six Rotary Peace Centers are located in Universities around the world. The Rotary Peace Fellows complete a rigorous program applied to areas related to peace and conflict resolution. The Fellowships cover tuition and fees, room and board, round trip transportation and all internship and field-study expenses. The Peace Center programs are made possible through the generous support of a relatively small group of Rotarians.

Since 2002, the Rotary Peace Centers have trained over 1000 fellows for careers in peace building. Many of them are serving as leaders of international organization or have started their own foundations.

Where Rotary Peace Center alumni work



Each year the Rotary Foundation awards 50 fellowships for master's degrees and 50 for certificate studies.

The master's program lasts 15 to 24 months. The certificate program lasts 3 months with 3 weeks field study.

Rotary Peace Fellows study in Peace Centers in countries other than their own.

To find out more information on Rotary Peace Centers: Follow Rotary Peace Centers on Facebook

Or, review the Rotary Peace Center's brochure in MyRotary

Sign up for Peace In Action newsletter
<https://my.rotary.org/en/news-media/newsletters>

Club Calendar

February

2 Ground Hog Day

7 Club Meeting

Valentine's Theme

9 Visit to Senior Care Home

23 Crab Feed Carmichael



March

2 Bowling

8-10 PETS

14 Board Meeting

6:00 p.m.

Sierra View Country Club

16 Visit To Senior Care Home

23 Passport One Work Day

30 District Assembly

April

6 Taco Throw Down (Roseville Club)

11 Club Meeting

18 Club Board meeting

6:00

Sierra View Country Club

20 Visit To Senior Care Home

27 Texas Hold'em (District Fundraiser)

CLUB SERVICE HOURS

To January 1st

3,164

To Report Your Service Hours:

[CLICK HERE](#)

IMPORTANT LINKS:

[Service Hour Reporting](#)

[Signup.com Volunteer](#)

WHAT ARE YOU DOING FEBRUARY 3rd



There's a good chance you will be one of the 114 million people who will be watching the Super Bowl on Sunday, February 3rd. That sounds like a lot of people, unless you compare it to the World Cup (the what?). Over 3.5 BILLION people watched the 2018 finals of the FIFA World Cup. That is because soccer is a global game. Can you imagine how much commercials cost for that game!



Passport Website:

www.Rotarypassport.org (Club Runner)

District 5180 Website:

<http://rotary5180.com>

Rotary International

www.rotary.org

A DISTRICT CONFERENCE FOR EVERYONE



BE INSPIRED ONE DAY

MAY 18, 2019

District 5180 Conference



WORK PROJECT ON FRIDAY, MAY 17TH
1 - 5 PM
FOOD TRUCKS



Citrus Heights Community Center
6300 Fountain Square Drive



ENTERTAINMENT

RYE BREAKOUT SESSIONS

SPEECH CONTEST FINALS

YOUNG PROFESSIONALS
RECEPTION

SPECIAL GUEST SPEAKER:
JACK GALLAGHER

KEYNOTE SPEAKERS:
PAUL CHAPPELL
AUYMOR AND PEACE LITERACY
DIRECTOR

SHIRLEY GRACE, PDG
DISTRICT 5210

ONE DAY

May 18th

LOCAL

Sacramento

AFFORDABLE

\$55

**INFORMATIVE
& FUN!**



CLICK BELOW TO REGISTER

<https://www.crsadmin.com/EventPortal/registrations/publicfill/eventpublicfill.aspx?evtid=7ede9c46-6f7a-4141-ae70-853f9db59930>

Happy Birthday To You



The violet is the flower for the birth month of February. Violets symbolize modesty. They also represent faithfulness and humility. Today there are 500 species of violets. An African Violet plant can last as long as 50 years. There are several species that are known as pansies.

Roses Are Red, Violets Are Blue
Rotary Rocks, and so do you.

1– Karen Alvord
19– Janice Gage
19– Hanns Haesslein
17– Bill Wittich
24– Michele Mutoza
25– David Sobon

WACKY DAYS IN FEBRUARY

1st– Bubble Gum Day
2nd– Ground Hog Day
3rd– Feed The Birds Day
6th– Chopsticks Day
8th– Kite Flying Day
9th– Pizza Day
11th– White T-Shirt Day
12th– Plum Pudding Day
15th– Gumdrop Day

February's Birthstone is the Amethyst



The Amethyst makes a perfect birthstone for February. The month is often cold, dark and short for many people in the world , so the amethyst-which is often associated with qualities of peace, courage and stability– is the perfect gemstone for individuals who need a little extra warmth and strength at this time of year.

FAMOUS PEOPLE BORN IN JANUARY

2nd– Shakira
3rd– Rebel Wilson
6th– Tom Brokaw
7th– Chris Rock
7th– Garth Brooks
7th– Ashton Kutcher
10th– Robert Wagner
11th– Jennifer Aniston
12th– Josh Brolin
15th– Jane Seymour

GOLDEN GIVING UPDATE



Our *Passport To People; Golden Giving* program is our signature club project that was started by our members and **Past District Governor, Janice Gage**. She has done an outstanding job of chairing this program for us. It would not be successful without the support of all our members, and Jan is very grateful for everything we have done

We donated several items to the seniors at our November meeting, and we gave them money collected at our Christmas party (approximately \$165) Jan has distributed the many items to the happy residents and used the money to purchase gift and goodies.

Members of the club visit the care home monthly and spend quality time with the seniors. Many thanks to **Sheri Katz and Stephanie Pastor** who attended the January visit. Everyone is welcome to attend the visits. The dates have been set for the rest of our Rotary year:

February 9th

March 16 th

April 20th

May 11th

June 15th

February 9th—Valentine's Day Celebration



We are having a little Valentine's Day party on our February 9th visit. We will bring a Valentine for each patient and have some festive cookies and treats. We will also have a sing-a-long. If someone plays guitar or sings like a bird in the club, we would appreciate the help leading musical activities. The people love to sing.

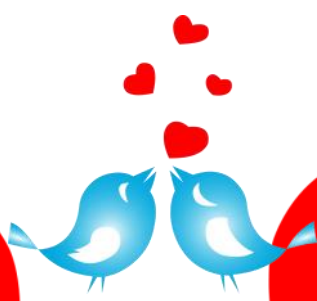
HAPPY VALENTINE'S DAY TO OUR PASSPORT ONE COUPLES

Scott & Karen
Alvord

Leigh-Ann & Mike
Reinero

Dwight Chambers &
JoAnne Tanner

Pat Braziel &
Sam Anderson

- 
1. **Nine million pets get a Valentine's Day gift.**
 2. **13% of women send flowers to themselves.**
 3. **Valentine's Day is National Singles Awareness Day (SAD)**
 4. **Over 144 million cards are exchanged on Valentine's Day in the US.**
 5. **Caramels are the most popular flavor in chocolate boxes, followed by chocolate covered nuts.**
 6. **More women get flowers on Mother's Day than Valentine's Day.**
 7. **23% of those who buy flowers on Valentine's Day are women.**
 8. **Approximately 36 million heart shaped boxes are sold every year.**
 9. **The red rose was the favorite flower of Venus, the goddess of love.**
 10. **Teachers receive the most Valentine's Day cards.**

“Wine’d Up For Youth”

Our Event! May 11th

Yes, we are going to be the sponsoring club for a fundraiser on May 11th. This is a big event for our club. It will be a wine tasting and food tasting evening, with other clubs participating. The top beneficiary will be oy RYE (Rotary Youth Exchange) program , but we will be getting 40% of the proceeds which should be a significant amount of money for our club’s general funds.



Since this is *our* fundraiser, we will need lots of members help on the event. We also need more people on the steering committee. We meet every Monday at 6:00 at the Ramada.. Please email me if you want to attend:

carollangle7@gmail.com

Please put May 11th on you calendar so you can volunteer to work the night of the event.

“Wine’d Up For Youth”

Our Event! May 11th

GAME NIGHT



It's amazing what we learned about each other playing games at game night.

LET THE GAMES BEGIN



Everyone who came was a winner. We had a lots of laughs . Let's do it again.





**These are not awards or pins.
You see 25,000 Polio vaccines--or wells--or toilets--or midwives--
or student desks--or books--or HIV medications--or**

OUR PAUL HARRIS FELLOWS

- Kwame Acquaa PHF+1
- Sam Anderson PHF(MD)
- Brad Asbury PHF (Bx2)
- Bill Bowen PHF+2
- Pat Braziel PHF(MD)
- Kelly Byam PHF(MD/S/B)
- Dwight Chambers PHF(+4/S)
- Michael Cooper PHF
- Greg Dixon PHF
- Louise Dutton PHF
- Diana Ebbitt-Riehle PHF(+2)
- Donna Fleshman PHF(+3)
- Al Frumkin PHF (MDx3/S/Bx4)
- Janis Gage PHF (MD/Bx2)
- Lisa Goudy PHF
- Megan Ham PHF(+1)
- Christie Harrison PHF
- Monique Harris PHF (S)
- Allan Harry PHF(+2)
- Cathy Harry PHF(+1)
- Hanns Haesslein PHF(+3)
- Jerry Harner PHF
- Seifu Ibssa PHF
- Eric James PHF
- David Kenitzer PHF(+8)
- Carol Langley PHF(+5)
- Jeff McAlpin PHF
- Michele Mutoza PHF +2
- Tom O'Conner PHF (+1)
- George Paraker PHF(+1)
- Tami Paraker PHF
- Alice Perez PHF(+1)
- Leigh-Ann Reinero PHF(MD)
- Mike Reinero PHF (MD/S/B)
- Jay Resendez PHF
- Brandon Silveira PHF
- Roxanne Snyder PHF(+2/B)
- JoAnne Tanner PHF(+2/B)
- Carsen Tazi PHF(+1)
- Sara Thornros PHF(+4/S)
- Ed Trujillo PHF (+3)
- Jan Valine PHF
- Anna Zych PHF
-

Paul Harris Fellows Have Contributed \$1,000 for each PHF

Major Donors (MD) Have Contributed \$10,000+

Paul Harris Society (S) Have Pledged a \$1000 Contribution Per Year

Bequest Society Members (B) have Designated \$10,000 or more to the Foundation in their Estate Plans