

Rotary Club of St Peters



PO Box 340, Marden, SA, 5070 Phone: 08 8411 0277
President – Keith Payne Secretary – Wendy Gaborit
Email stpeters@rotaryclub.org.au
Website <https://portal.clubrunner.ca/stpeters>
Facebook <https://www.facebook.com/StPetersRotary/>



Weekly Meetings - The Rotary Club of St Peters meets on Tuesdays at 6:00 PM
at the Kensington Hotel, 23 Regent St., Kensington, S.A. 5068. Visitors are welcome.

Due to the Pandemic State-wide Lockdown
The Meeting scheduled for 20 July was cancelled

Next Club Meeting is on Tuesday 27 July at 7:15 for 7:30 pm by Zoom.
Program – Behind the Badge – featuring President Keith Payne

Members please note Brian Kretschmer will forward a link by email.
Visitors are most welcome – please contact the Club

Please note the Shed will be closed on Saturday 24 July.

President's Remarks

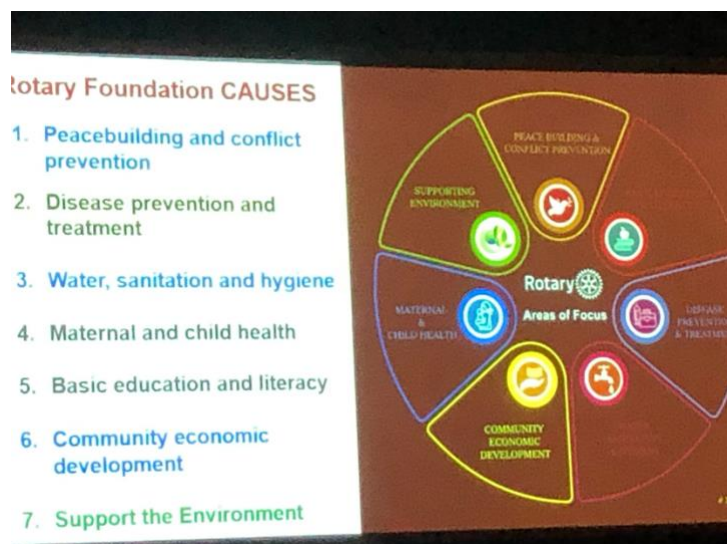
- President Keith and the Admin team met by Zoom to discuss the Club Meeting Program
- Meetings in the short term will go ahead by Zoom if the State continues to have restrictions that prevent the Club meeting at the Kensi
- The Club Program includes some sessions in Membership Month (August) where long term members will share aspects of their life and career as well as knowledge of Rotary with other members – Behind the Badge

Save the Date

- Tuesday 9 November – Design and Creativity Awards
- 17 to 27 November - Polio Ute Relay – the **End Polio Now Ute** will be in our Area for the following two weeks – more details later
- 23 November – District Governor Visit – Jeff and Jenny Neale
- 1-3 April 2022 - District 9510 Conference in the Barossa Valley – Accommodation bookings open

Rotary Area of Focus – The Environment

The Rotary Foundation Trustees and Rotary International Board of Directors have added a new area of focus: the environment.



More than \$18 million in Foundation global grant funding has been allocated to environment-related projects over the past five years. Creating a distinct area of focus to support the environment will give Rotary members even more ways to bring about positive change in the world and increase our impact.

Supporting the environment becomes Rotary's seventh area of focus, which are categories of service activities supported by global grants. It joins peacebuilding and conflict prevention; disease prevention and treatment; water, sanitation, and hygiene; maternal and child health; basic education and literacy; and community economic development.

Grant applications for projects will be accepted beginning on 1 July 2021. Gifts and commitments from Rotarians and others will be sought to provide global grant support for the new area of focus. More information about this new area of focus will be announced soon. <https://my.rotary.org/en/environment-becomes-new-area-focus>

How Can Our Club Be Involved?

Local Recycling and Waste Management

Our Club was privileged to be addressed by Megan Bekesi - Education and Promotions Coordinator from East Waste on 8 June. We have been in touch with Megan and here is the message from East Waste during Covid 19 restrictions.

"East Waste will continue to provide kerbside collection services as per current on-going arrangements. This includes kerbside bin and hard waste collections.....

*..... As we may be working back at home again, more cars will be parked on the street. On bin collection day, please make sure that your bins are **1 metre from parked cars or other obstacles** e.g. stobie poles, letterboxes, trees etc. or place your bins in your driveway for collection. This will minimise the risk of your bin being missed."*

The Rotary Shed is a wonderful example of recycling surplus goods that can be used by others.

Over the next few weeks the Bulletin will publish information for householders on recycling and waste management as provided by Megan. We plan to invite Megan to present a follow-up session on this topic later this Rotary year.

At Home – The Green Bin



The image shows a green recycling bin with a green lid. On the side of the bin, there are five circular icons with green checkmarks, each representing a type of waste accepted in the bin: paper towel and tissues, pizza boxes, serviettes and paper bags, compostable cardboard containers, compostable cups and cutlery, and unwanted food. To the right of the bin, the title 'Green Food and Garden Organics Bin' is displayed in bold black text. Below the title, a list of accepted items is provided with green checkmarks: paper towel and tissues, pizza boxes, serviettes and paper bags, compostable cardboard takeaway containers, compostable cups and cutlery, and any unwanted food. A note states that compostable containers, cups, and cutlery must be certified 100% compostable and to look for a seedling logo. The EastWaste logo is in the bottom right corner.

Green Food and Garden Organics Bin

- ✓ Paper towel and tissues
- ✓ Pizza boxes, serviettes and paper bags
- ✓ Compostable cardboard takeaway containers
- ✓ Compostable cups and cutlery
- ✓ Any unwanted food

Note: compostable containers, cups and cutlery must be certified 100% compostable - look for seedling logo

EastWaste

We can all contribute to the health of our environment.

Next week we will focus on the Yellow Bin.

The last word comes from Megan...

“Please encourage people to check out our website: eastwaste.com.au as well as the whichbin.sa.gov.au website with lots of information on both!”

Rotary Club of St Peters Website

Do take a look at our Website. Webmaster President Keith Payne has updated the site recently. The site is a detailed resource for any queries about our vibrant Club.

Website <https://portal.clubrunner.ca/stpeters>

From District 9510

Do you have photos of our members at work? The District is planning to compile of carousel of Clubs and activities.

Bulletin Items

The Bulletin Editor would also appreciate contributions so we can remain connected through words and pictures. Please email them by Wednesday evening.

pamv@adam.com.au

Pam Vaughton
Bulletin Editor



Birthdays and Anniversaries

?

- o 11th John Gallehawk
- o 14th Anniversary John & Helen Dubberley
- o 17th Sue Bardy
- o 20th Romaine Dawson
- o 27th Anniversary John and Margaret George
- o 30th John Dubberley

Subscriptions 2021-22 - Subs are due and can be paid in full or six-monthly.

The subscription of \$200 can be paid in cash, cheque or by payment into the Rotary Club of St Peters General Account - BSB – 065 129 Account number 00901697 Please indicate your name.

The Adelaide University Rotaract Club

Wood Sales from the Shed



Recent sales of wood via the Rotary Club of St Peters Shed have been brisk.

The wood has been bagged for ease of management and transport.

Our Club is delighted to support the young folk in the Adelaide University Rotaract Club.

Cultural Night Tickets are available via the **Adelaide University Rotaract Club** Website.

We are hoping to book a table of attendees from our Club.



Saturday 18 November

Meeting Roster

Day	Tuesday	Tuesday	Tuesday
Date	27-Jul-21	3-Aug-21	10-Aug-21
Meeting	3187	3188	3189
Venue	Kensington Hotel	Kensington Hotel	Kensington Hotel
Topic / Guest Speaker	Behind the Badge Keith Payne	Social Media Wendy Gaborit	Behind the Badge
Chairperson	Brian Kretschmer	Brian Kretschmer	Arthur Manser
Vote of Thanks	John Gallehawk	Arthur Manser	Carmel O'Reilly
Special	Zoom		Board Meeting
Reception		Sonia Schepetiuk	Keith Shaw
Cashier 1		David Birkedale	David Strange
Cashier 2		Keith Shaw	Tony Camporeale
Steward		Bruce Ballantyne	Marlene Ballaco
Invocation	John Dubberley	Sonia Schepetiuk	Keith Shaw
Bulletin	Pam Vaughton	Pam Vaughton	Pam Vaughton
Information Spot	-	-	
Sergeant	Greg Rogers	Phil Smith	Sue Bardy
Information	Zoom		

Shed Roster

**THE TEAM LEADER IS RESPONSIBLE FOR THE TEAM
FOR FOLLOWING THE SHED GUIDELINES AND BANKING THE DAY'S TAKINGS**

THE COVID 19 PLAN MUST ALWAYS BE FOLLOWED

PLEASE NOTE : THE SHED WILL BE CLOSED ON 24 JULY

Day	Saturday	Saturday	Saturday
Date	24-Jul-21	31-Jul-21	07-Aug-21
Special 1			
Special 2			
Covid Marshall 1	Sue Bardy	Carmel O'Reilly	Sue Bardy
Covid Marshall 2			
FRONT COUNTER			
Team Leader - Counter Sales	Julie Reynolds	Pam Vaughton	Chris Dawson
Counter Sales 1	Joan Shaw	Trenna Kretschmer	Rod Carey
Counter Sales 2	Barbie Birkdale	Bill Winslow	Romaine Dawson
General Help	John Reynolds	Dennis Henschke	
CAFÉ/BBQ			
Coffee 1	George Dimitriadis	Brian Kretschmer	David Strange
Coffee 2	Angela Williams	Angela Williams	Jen Carey
Goods In	Milton Jones	Milton Jones	Phil Smith
Assisting Small Household	John Seeliger	John Seeliger	John Seeliger
Emergencies	Phil Smith	Phil Smith	Phil Smith
Pick up Crew 1	Pauline Yates	Pauline Yates	Pauline Yates
Pick up Crew 2			