

# What is Rotary Club?

<Flip-Card Version>

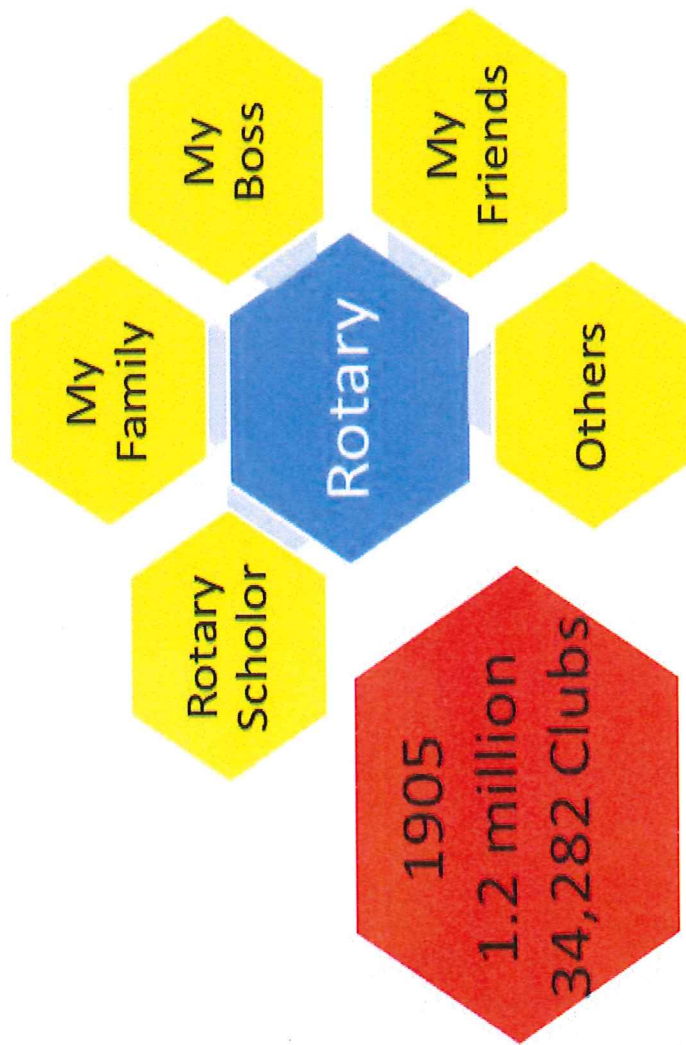


**Rotary**

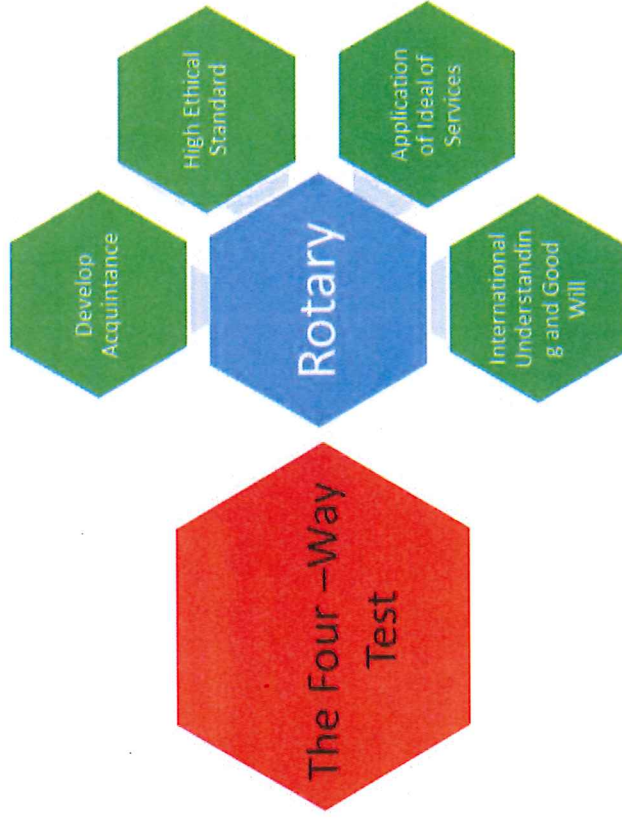


Rotary Opens Opportunities

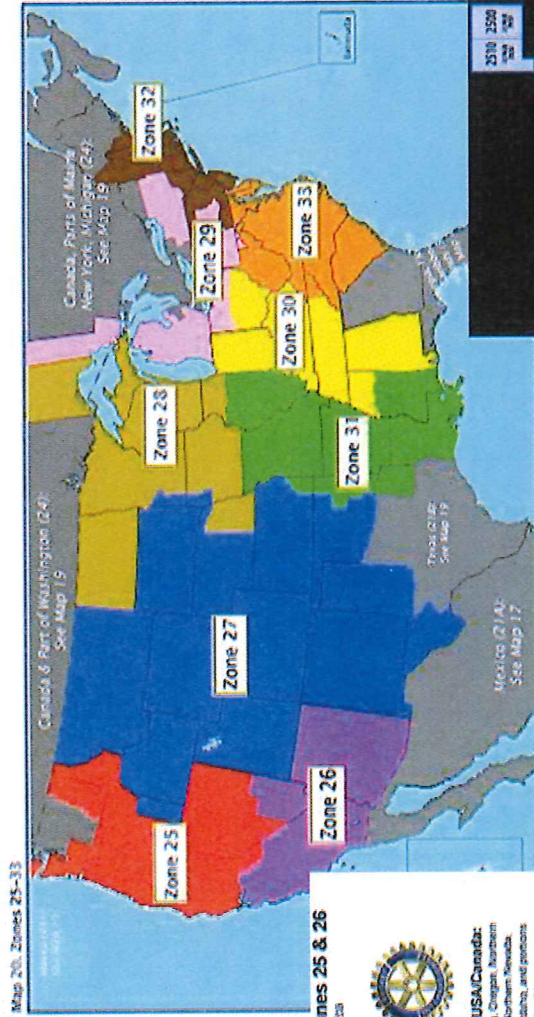
# Rotary?



# Guiding Principles



# Zones and Districts



## Rotary International - Zones 25 & 26

For What North America



**Rotary Club of Little Tokyo**  
We are in Zone 26, District 5280



# Programs

## Rotary International

International Convention

Polio Eradication

Global Grant Project

## District

Humanitarian Trip

District Assembly

District Picknic

Leadership Training

## Club

Regular Meeting

District Grant Projects

Community Services

Vocational

International

Youth

**Rotary Club of Little Tokyo**  
**Our Missions are;**

- 1) To vitalize the community.
- 2) To bridge between Japanese American Community and the Japanese speaking community
- 3) To be a "go-to" specialists in US Japan relationship and US Japan Cultural exchange.

**Rotary Club of Little Tokyo**  
**Our Missions are;**

- 1) To vitalize the community.
- 2) To bridge between Japanese American Community and the Japanese speaking community
- 3) To be a "go-to" specialists in US Japan relationship and US Japan Cultural exchange.

## Financial Obligations to the Rotary Club

Club Dues	\$300
Speakers' Meal	\$20
Meeting Room Charge	N/A
Social Events Charge	\$100 (Year-End, Demotion)

**TOTAL DUE - Payable to Rotary Club of Little Tokyo    \$420**

Rotary Club of Little Tokyo Foundation    100\*(recommended)

Rotary International Foundation    100\*(recommended)

Additional Contributions - LTRC Foundation  
Additional Contributions - Rotary International



Your donation to the Rotary Club of Little Tokyo Foundation provides the funding for the Club's charitable giving efforts, such as various projects, scholarships for local students, dictionaries for needy schools, and so on.

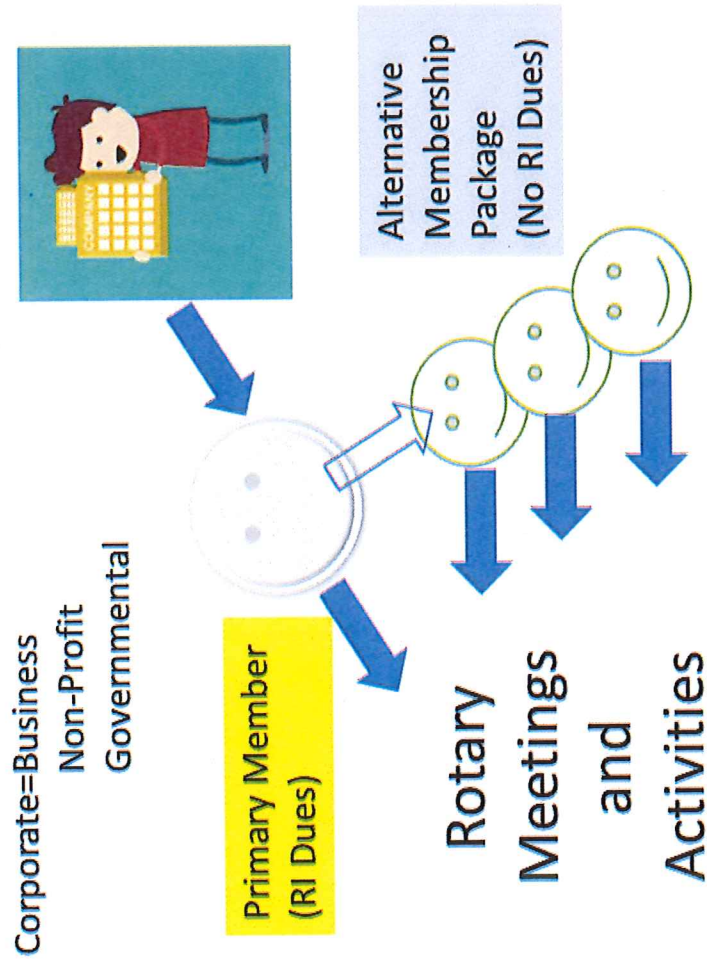
The Rotary International Foundation supports efforts worldwide to eliminate polio, provide clean drinking water, student exchange programs, and so on.

Club members who have not achieved Paul Harris Fellow status (\$1000 in total giving) are requested to be a Sustaining Member with a \$100 annual contribution.

### Additional Cost Concerns:

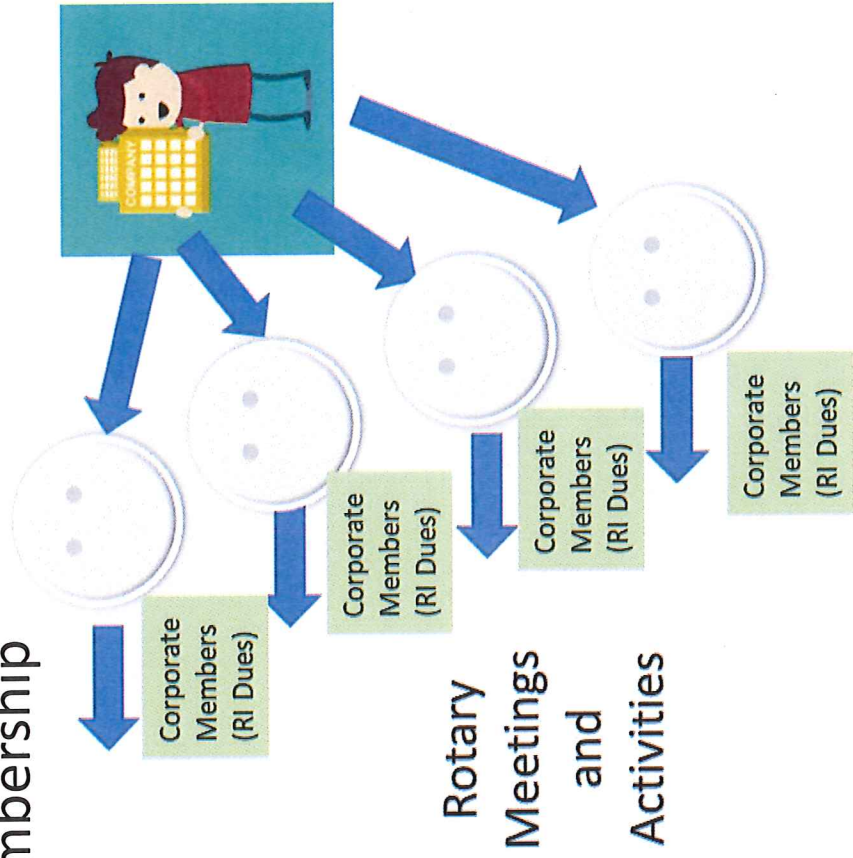
- Upon first time member application, there will be a fee of \$100 to process the application and prepare for the incoming member; i.e. name badge, etc.
- For potential young members, Board may provide discounts in club dues and the initial membership application fee up to 25%. However, the Board may decide to discontinue the discount from such time as such discount may be deemed unnecessary for the member.
- For spouse induction, Board may incentivize such recruit and/or retention by granting up to 10% discount in club dues for the added spouse.
  - Additional Contributions - LTRC Foundation and Rotary International
  - Weekly Venue Meal – The regular club meal meeting fee will be \$12 to \$18 depending on menu selection. You are welcome to pre-pay this fee with your annual statement. There will be a total of 44 regular lunch meetings, which may amount to \$500 to \$800. We also encourage "Happy Bucks" contributions of \$2.00 to \$5.00 or more at each meeting.
  - Misc. expenses: District events etc. Financial costs from \$600 to \$800 a year (Excluding your lunch expenses)

# Corporate Membership



Not in USE at this time.

MODEL A



MODEL B

# Corporate Membership

## MODEL A

Corporate Dues	Cost
Primary Member	
Alternate Member 1	
Alternate Member 2	
Alternate Member 3	
Total annual cost	

Not in USE at this time.

## MODEL B

Corporate Dues	For Two (2) Corporate Members	For Three (3) Corporate Members	For Four (4) Corporate Members
Annual cost for Organization	\$810.00	\$1,170.00	\$1,510.00
Average cost for Organization	\$405.50	\$390.00	\$377.50
Corporate Dues	Option 1	Option 2	Option 3
Primary Member	\$430.00	\$430.00	\$430.00
Alternate Member 1	\$380.00	\$380.00	\$380.00
Alternate Member 2		\$360.00	\$360.00
Alternate Member 3			\$340.00
Total annual cost	\$810.00	\$1,170.00	\$1,510.00
Average cost per member	\$712.50	\$533.33	\$443.75