



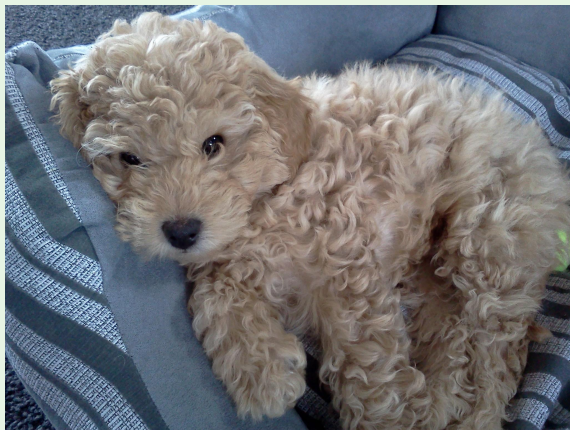
Pinehaven School

Therapy Dog Programme

Creating positive experiences,
developing resilience, patience,
empathy and interpersonal
communication in all students at
Pinehaven School.



Moments of pure joy!



Teddy 10 weeks old

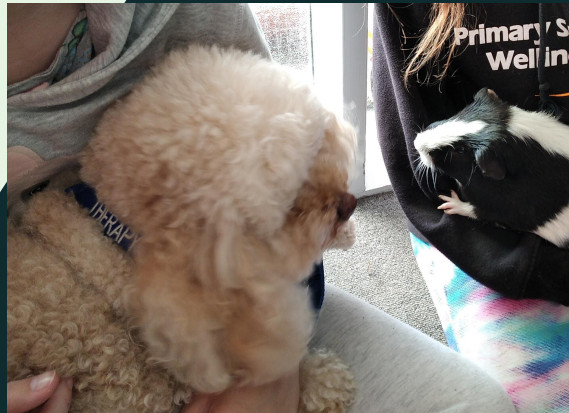
Bounce, Teddy's best friend



Teddy



Elizabeth and Teddy



Meeting Polo the guinea pig at school





Teddy's role as a Therapy Dog is to provide emotional support, sensory and tactile soothing. He supports students in their learning, communicating with others and responds to individual needs and goals in times of distress and anxiety. He also provides moments of respite for all parties.



Building communication, self-control and patience -
It doesn't always work first time!



Empathy



Compassion

Teamwork



Communication

Trust

Quiet

Self-regulation

Self-Awareness

Parent/Teacher Feedback:

I know Teddy will be teaching him a range of things, which is good.

Thank you for spending such great moments with X. I am so impressed. Really lovely to see the photos.

I see a huge change in his mood when he is around Teddy. He seems to feel a real sense of accomplishment.

X comes home and talks about what he has done with Teddy.

I don't have any problems getting X to school on Teddy days!

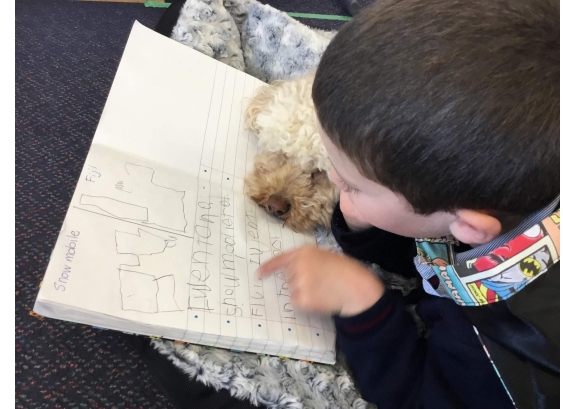
I am so pleased X is enjoying the program, he has been telling me all about it.

The incredible bond that X and Teddy formed has assisted X to transition into this second year of school.

Dog Safety

Peseverance

Problem Solving



Patience

Empathy

Breathing

Planning



Pinehaven School

Feedback

Teddy has become part of our staff and together, he and Elizabeth have transformed the learning experiences of the students involved in the programme.

Principal - Pinehaven School

My student really looks forward to working with Teddy and I believe this has raised his self esteem as he feels important. Your big focus on gentle hands and a gentle voice is so beneficial for him and I believe this is also evidenced in my student's behaviour in the classroom more and more often." - Teacher Pinehaven School.

Teddy being at school is the highlight of his week. It is wonderful seeing photos of a happy, smiling child and having a "safe" positive topic of discussion." - Parent

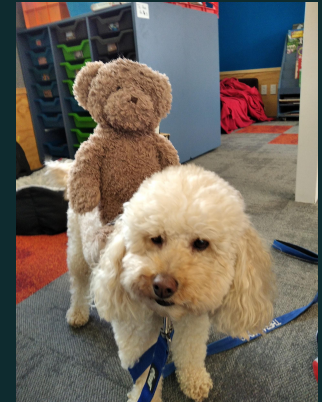
Funding support is requested for \$25-30K per annum to fund the salary of our Therapy Dog Teacher (Elizabeth), and to fund continued and specialised therapy and dog training for Elizabeth and Teddy. Funding support will also provide specialised equipment needed to run the programme and support the students.

Our expert trainers who work 1-1 with Elizabeth and Teddy.



Our point of difference: our programme is created and implemented by an experience classroom teacher, supported by expert trainers. Providing a bespoke programme that is adaptive, links to the curriculum and supports, students, teachers and whānau.

Building connections and bringing joy across the school!



Thank you for your support. We hope you have enjoyed learning about this programme and the wonderful experience and skills this is bringing to our Hutt Valley children.