

From Reading Letters in a Walled Garden to Navigating the Open Jungle

or... my professional challenge

Dr Simon Paul Atkinson (PFHEA)

Manager, Learning Design / Kaiwhakahaere Whakapakari Akoranga
Open Polytechnic of New Zealand



 @sijen

 @simonpaulatkinson

 www.simonpaulatkinson.com

 simon.atkinson@openpolytechnic.ac.nz

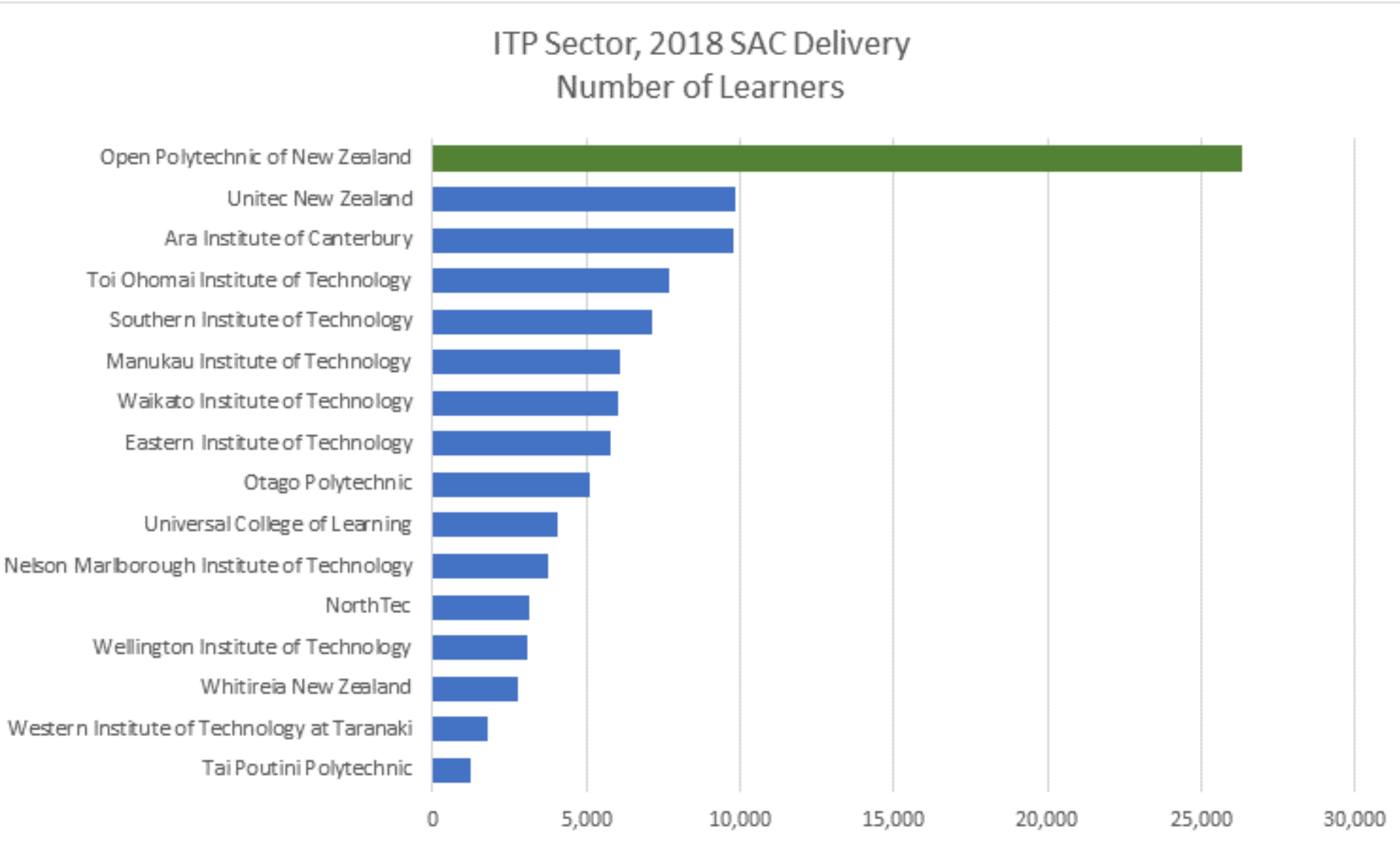
Educational Background

Year	Institution	Role	Dissertation
1988	Chichester University	BA(Hons) Religious Studies with Education	Post-Holocaust Jewish Theology
1991	Exeter University	MA in Western European Studies	European Broadcasting Futures
2004	Open University	Postgraduate Certificate in Teaching and Learning in Higher Education	
2019	University of Leicester	PhD in Museum Studies	Adult Learning in the Heritage Sector

Digital Engagement – Landscapes

Year	Institution	Role	Platforms
1998	Victoria University of Wellington (NZ)	Professional Programme Manager	WebCT and Blackboard
2001	Open University	Academic Development Officer	FirstClass Centricity
2003	University of Hull	Head of e-Learning	Merlin...
		Head of Centre for Development	Blackboard...
		Director of the Learning & Teaching Support Unit	Sakai.
2008	Massey University (NZ)	E-Learning Strategic Advisor	Moodle (from WebCT)
		Director of Learning and Teaching	Moodle
2010	London School of Economics	Academic Developer	Moodle
2011	BPP University (College)	Associate Dean for Learning & Teaching	Moodle (from Blackboard)
2018	Open Polytechnic of New Zealand	Manager, Learning Design	iQualify

Open Polytechnic – between 25,000-30,000 students



Open Polytechnic

Technical Correspondence School in 1946.

to provide resettlement training for returned servicemen and women following World War II.

Technical Correspondence Institute (TCI) in 1963

began offering national training in trades subjects.

The Open Polytechnic of New Zealand in 1990

the specialist national provider of open and distance learning at tertiary level.

The ODFL challenge

O	Open
D	Distance
F	Flexible
L	Learning

The ODFL challenge

Open

As few as obstacles to
studying as feasible

Distance

No spatial constraints
'No face to face contact'

Flexible

No time constraints
'Anytime, anyplace'

Learning

Quality learning that
demonstrates personal and
social gain



Students
Perceptions and
Expectations

A

Space Quiz

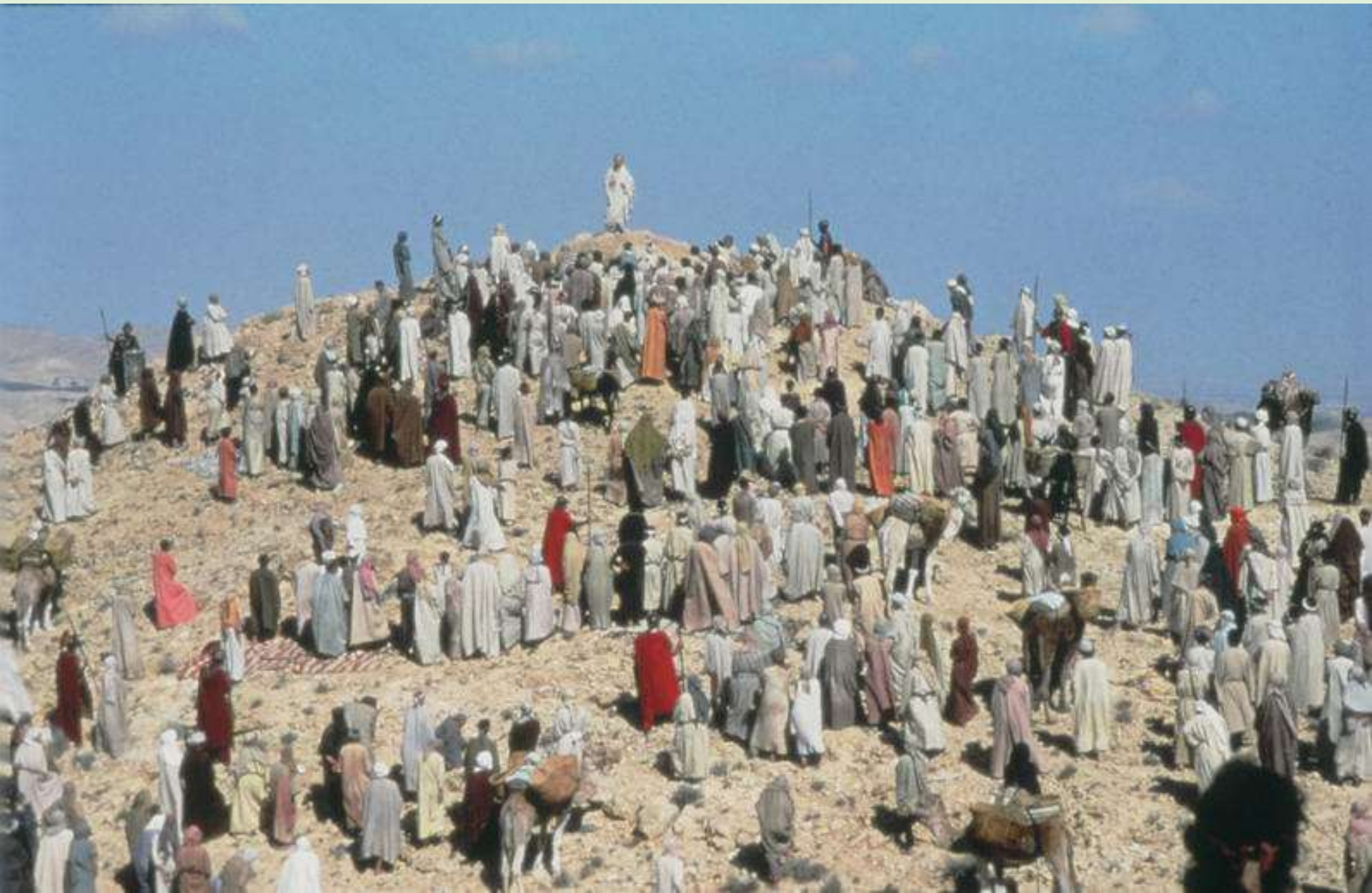
B

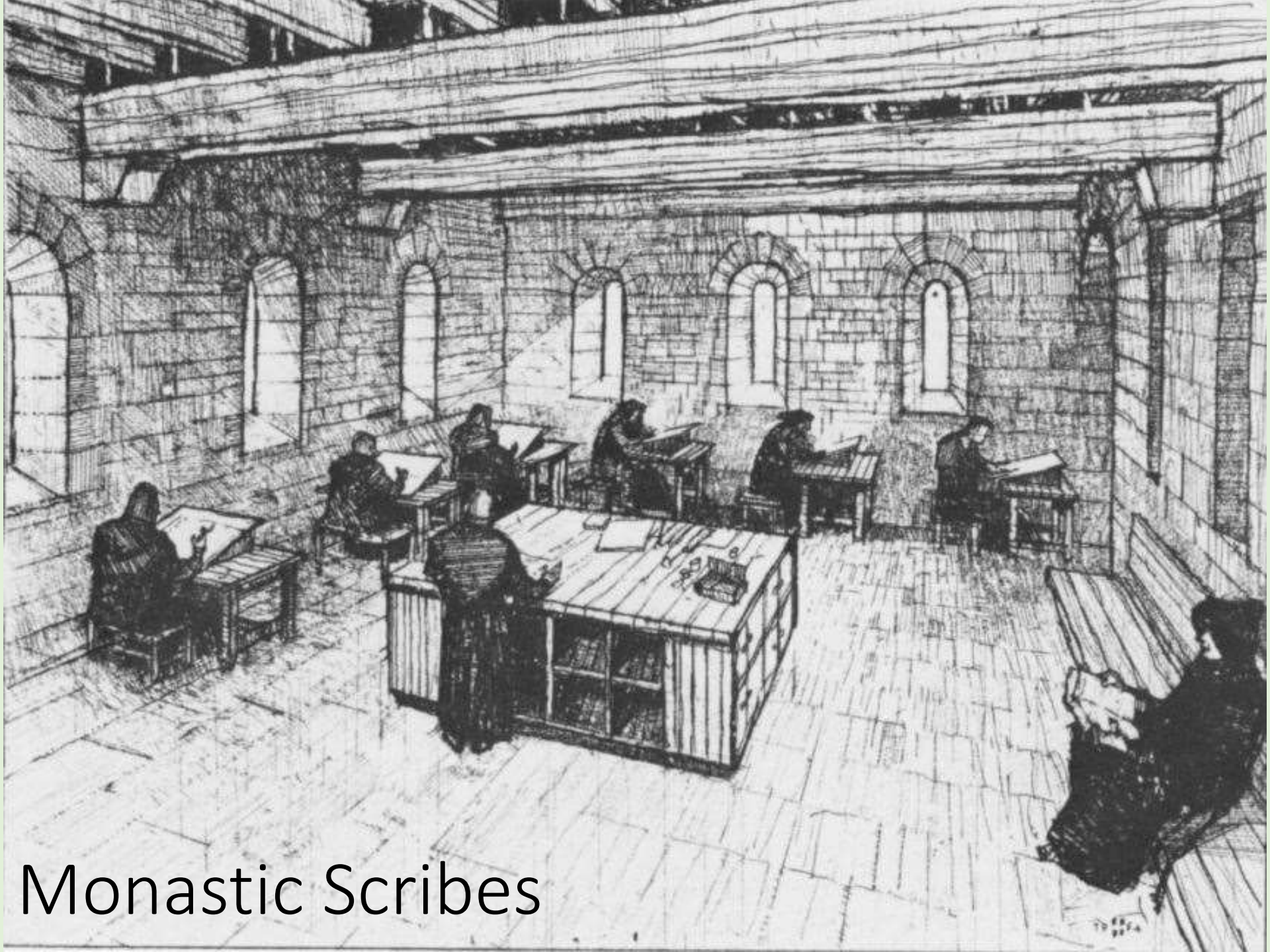


C



Jesus – Sermon on the Mount





Monastic Scribes

A University Tradition



Classrooms

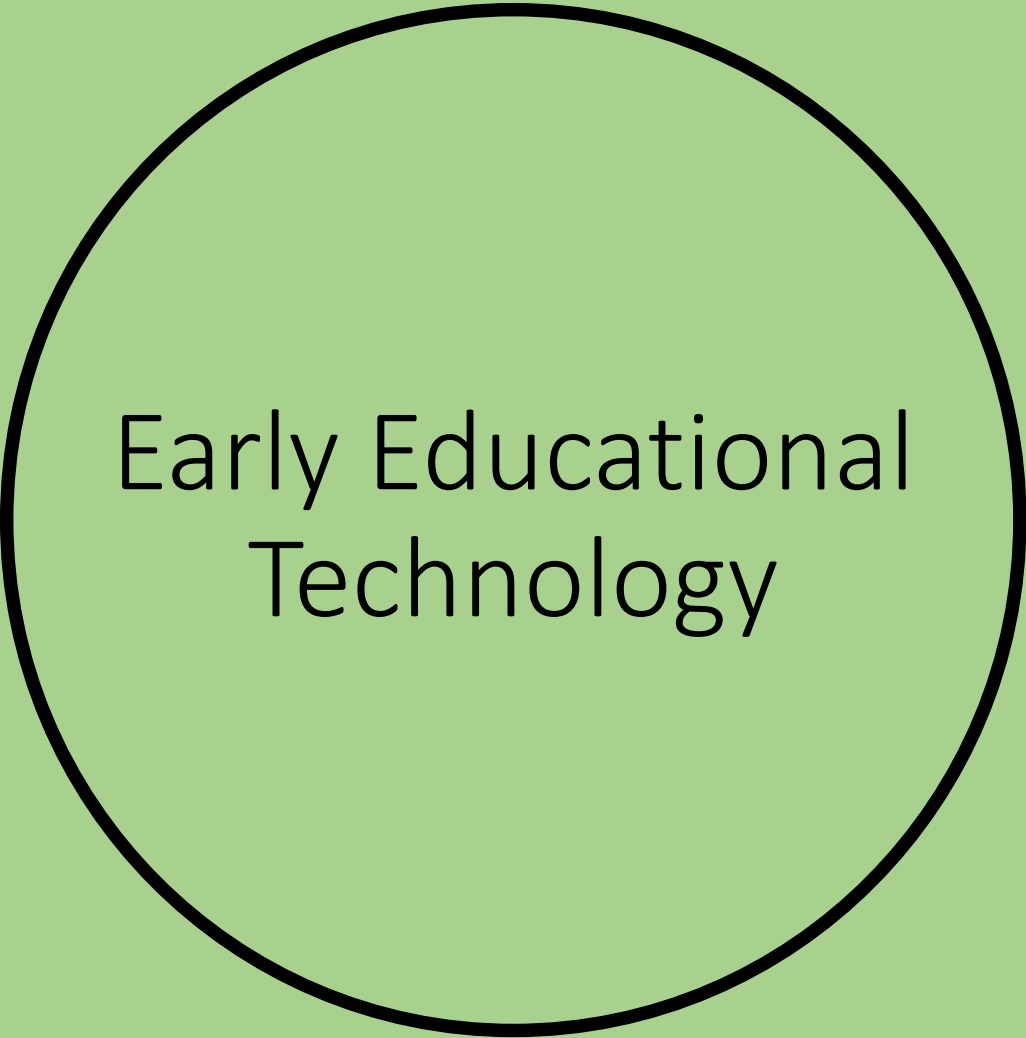


University Lecture



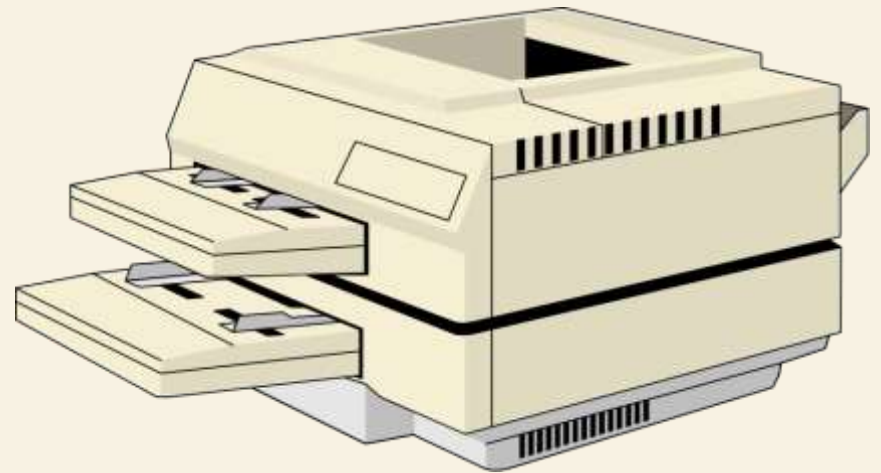
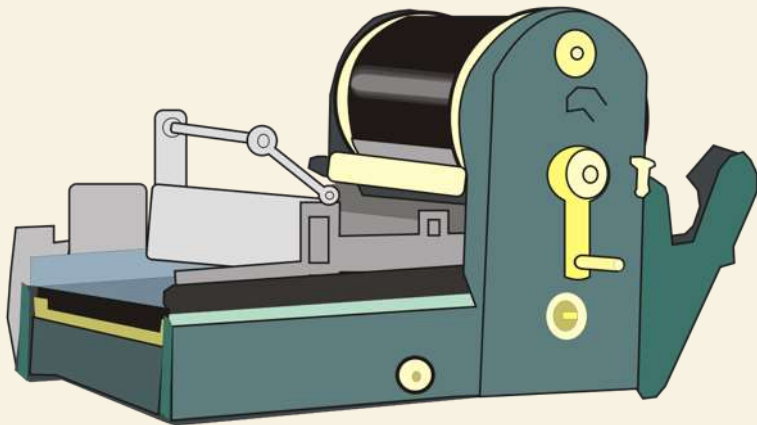
University Seminar



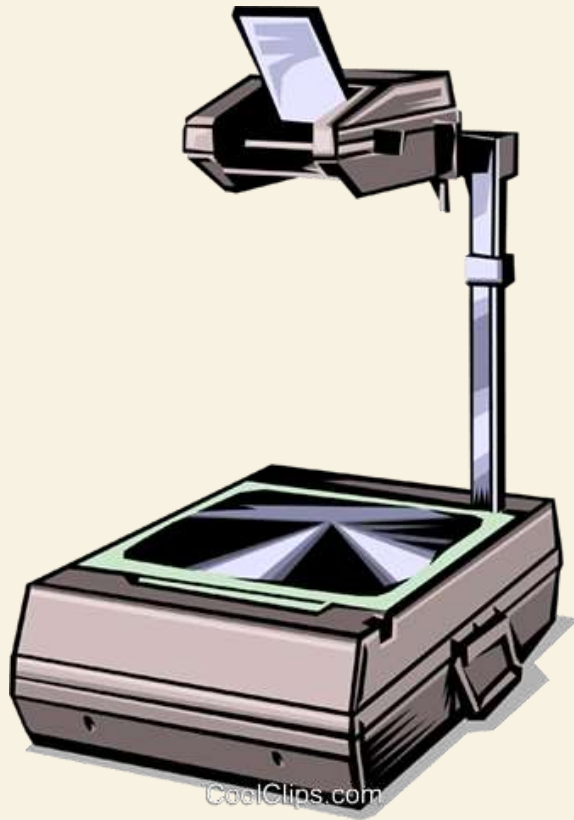


Early Educational Technology

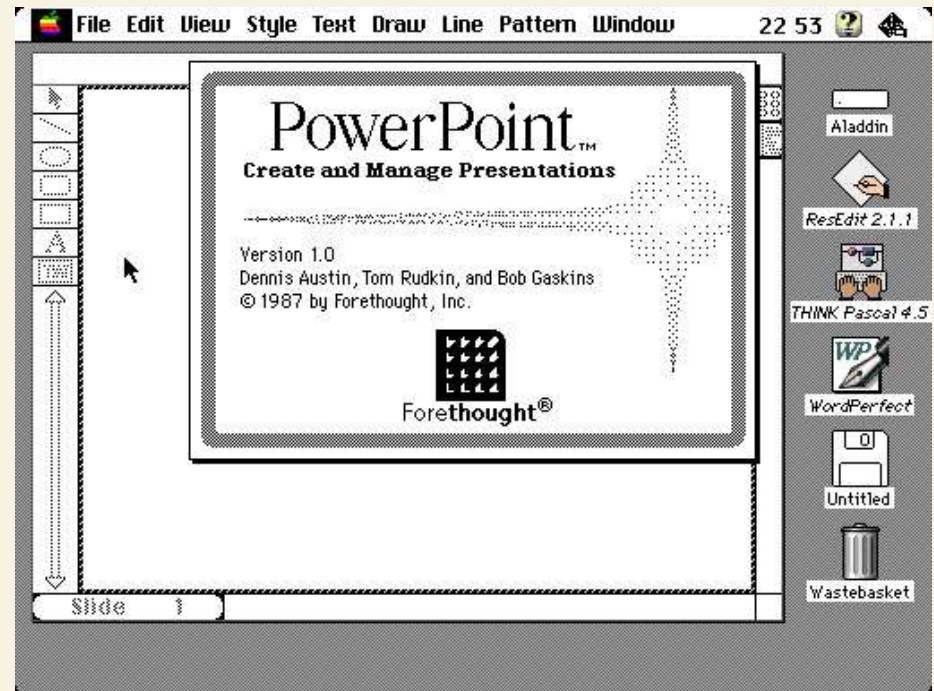
Mimeograph to Photocopier



Acetate to Datashow



'Analogue' to Digital



Walled Garden

noun

a garden enclosed by high walls.

COMPUTING -TELECOMMUNICATIONS

a restricted range of information to which subscribers to a particular service are limited.

safe
space

access
guarantee

tended
garden
...
support

The Ubiquitous VLE (Virtual Learning Environment)

The screenshot shows the eBridge interface for The University of Hull. The top navigation bar includes links for My Home, RePRODUCE, FD in ADM, My e-Portfolio, and Teaching & Learning. A left-hand menu lists various site features like Site Home, Announcements, Calendar, Forums, Messages, Resources, Module Overview, Module Tasks, Members, Site Stats, Site Info, Blogger, Chat Room, Wiki, 1260 POLO, 01259 - IEOLT, and Web Content Wendy's blog. The main content area is titled 'Forums' and displays a thread titled 'Implementing Effective Online Learning & Teaching / Roles & Rituals - who's in charge? / REVIEW: What is Simon doing ??'. Below the thread title, it shows a post by 'Atkinson, Simon' dated 'Oct 25, 2008 9:19 PM'. The post content includes the text 'Last Revised By Atkinson, Simon on Sat Oct 25 22:02:31 BST 2008' and 'I'd like you to review the following short clip in which I'm asking several ques message like any other I'. A video player is embedded in the post, showing a man holding a book titled 'Sustaining'.

The screenshot shows a Moodle course page for '136.165 Cultural Artefacts' at Massey University. The page is viewed in a Windows Internet Explorer browser window. The top navigation bar includes links for Course, 136.165 Cultural Artefacts, and Windows Internet Explorer. The main content area is titled 'Massey Moodle - 136.165 Cultural Artefacts' and displays a 'Weekly outline' section. The outline lists various activities and resources, including 'Series forum', 'Question and answers', 'Octavious Hatfield Interview Week 12', 'Some of Octavious's Background Week 13', 'Octavious Hatfield "A remarkable relationship" Week 13', 'Octavious Hatfield "A pretty decent legacy" Week 14', 'Multidisciplinary Studies Cultural Artefacts', and 'FINAL WEEKS Cultural Artefacts MOIS'. The page also features a 'Latest News' section on the right, listing recent updates and a 'Weekly outline' section on the left, listing various activities and resources. The bottom of the page shows the date '14 July - 20 July' and a 'Local intranet' link.



Open Jungle

The
Digital
World

The Digital World — that learners live and work in...



The ODFL ~~challenge~~ - *reality*

Open

Prior study best determinant
Prerequisites often implied

Distance

Students misunderstand the
need to be independent

Flexible

Fixed exam and submissions
dates

Learning

Doesn't suit everyone

Blue Sky

Just in Time / Context Sensitive Learning

Wearable Learning Artefacts

Individualised Learning Platforms

Personalised Pathways

Start anytime, assess anytime

Dr Simon Paul Atkinson (PFHEA)

Manager, Learning Design / Kaiwhakahaere Whakapakari Akoranga
Open Polytechnic of New Zealand



 @sijen

 @simonpaulatkinson

 www.simonpaulatkinson.com

 Simon.Atkinson@openpolytechnic.ac.nz