

# District Governor visit

DG Jan Boustead

2022-23





# Who am I

---







# A career in education







# District 9999 Breast Plate

---

Combining the Pounamu and the Southland Beech symbolises the bringing of the districts together. The Pounamu comes from Rotary District 9970 and the Beech comes from Rotary District 9980.

The koru represents the new shoots of the fern plant opening, so it symbolises growth, harmony and new beginnings.

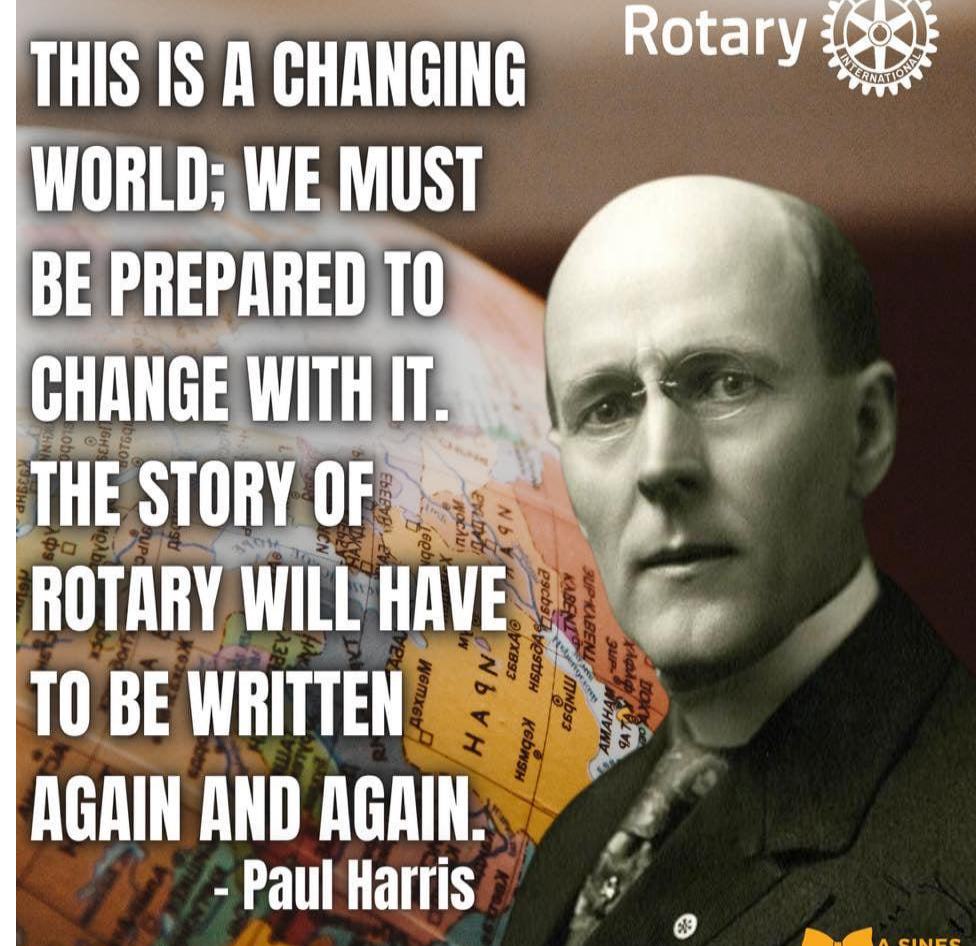
# Jennifer Jones RI President 2022-23

---

*"Imagine, a world  
that deserves our  
best, where we  
get up each day  
knowing that we  
can make a  
difference."*







# Change

Paul Harris said



# RI President Jennifer's focus for 2022-23

---

- Engaging members is crucial to retaining members - we need to ask members what they want to get from Rotary
- Embracing change also means embracing new club models
- Ensuring a focus on diversity, equity and inclusion





# District Governor Goals 2022-23

---

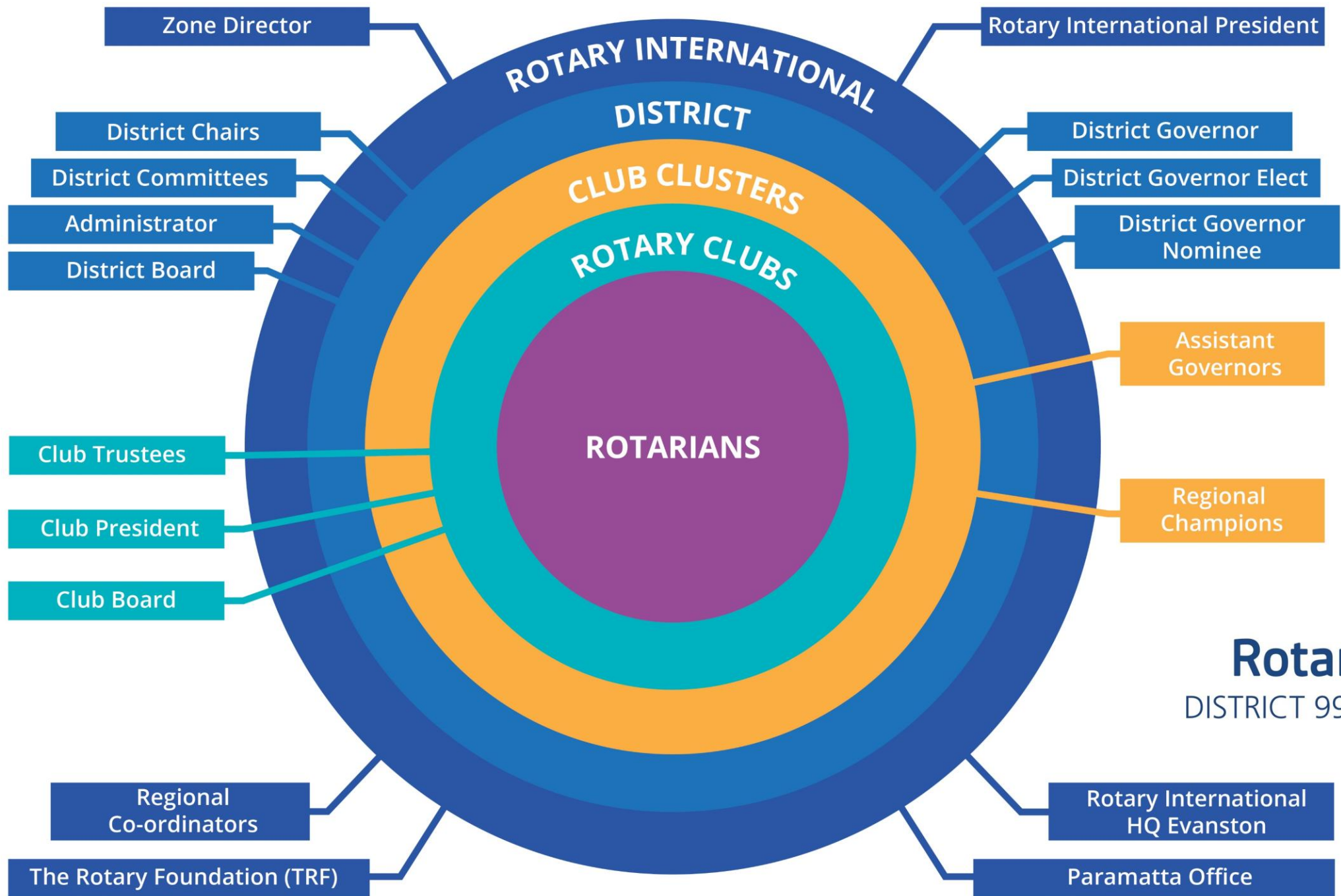
To build a sense of community and collaboration between clubs, clusters and across geographic boundaries

To encourage clubs and members to seize opportunities and expand horizons

To embrace diversity and extend our reach

To support clubs to innovate and engage members purposefully







## 5 attributes of successful & agile clubs

### THE 5 ATTRIBUTES

STRONG LEADERSHIP

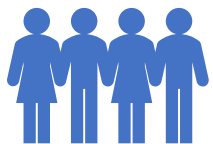
MANY EVENTS &  
PROJECTS

VISIBLE IN THE  
COMMUNITY

ACTIVE, INTENTIONAL  
MEMBER ENGAGEMENT

CLEAR GOALS &  
A GROWTH PLAN





Each Rotary club is unique



Critically examine how you  
appear to the world outside



What practices are no longer  
relevant?



How can Rotary fit the  
lifestyle we seek to maintain?





*When you make a donation to The Rotary Foundation, you are helping Rotary make a difference in the lives of millions of people around the world, by promoting peace, preventing disease, supporting education, bolstering economic development, and providing clean water and sanitation.*



# Rotary NZ & Pacific Day of Action

## 24 September 2022

---

- **Decide** on a community project
- **Collaborate** with other Rotary & Rotaract Clubs & organisations in your area
- **Invite** the local community to join you
- Make it a **social experience** and have fun!
- **Promote** the event before, during and after
- See it as an **opportunity** to find new members for your club







This Photo by Unknown Author is licensed under [CC BY-SA-NC](#)



This Photo by Unknown Author is licensed under [CC BY-NC-ND](#)



# IMAGINE: EMBRACING DIVERSITY

DISTRICT 9999  
CONFERENCE  
OAMARU  
24-26 MARCH 2023



# Collaboration – Working together to achieve great outcomes

---

*He waka eke noa*

*A canoe which we are all in with no exception*





# Your next steps

---

Where to from here?

- What will you work on in this coming year in your club?
- How will you engage your members?
- How can you be visible in your community?



# Q and A

---