



BEYOND 2025 SOUTHLAND

Regional Long Term Plan



BEYOND 2025
SOUTHLAND
Regional Long Term Plan



southland just transition



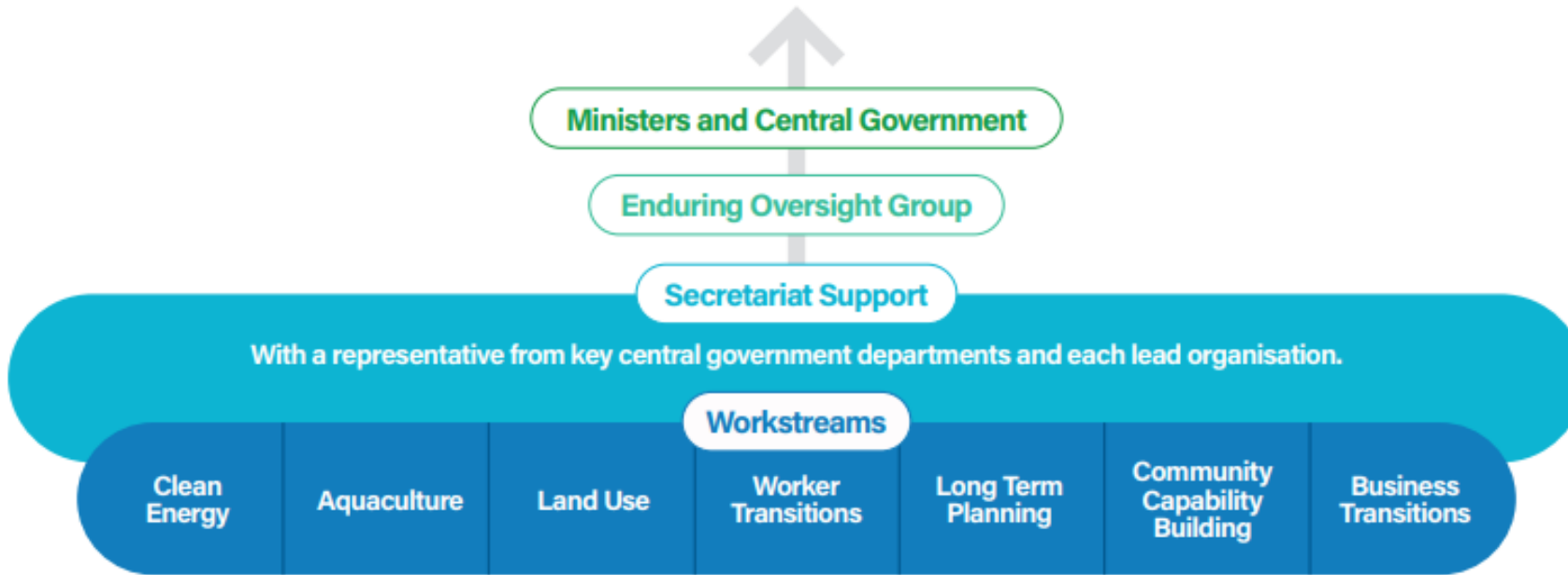
**MINISTRY OF BUSINESS,
INNOVATION & EMPLOYMENT**
HĪKINA WHAKATUTUKI

Today's Presentation

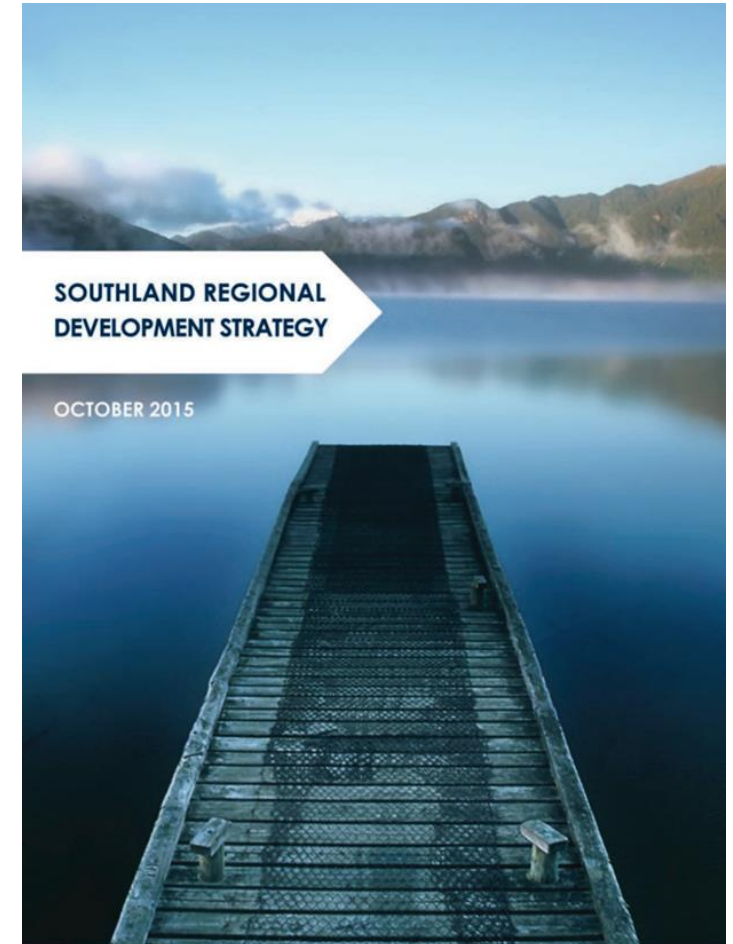
1. The process to get to today
2. The Plan and how it works
3. Empowering us and our region
4. Next Steps



Two Purposes



 southland just transition



The arrows represent the main pillars of the project - people, economy and environment.



The arrows symbolise moving forward into the future and are joined to symbolise a pathway and a shared journey.

'Beyond 2025' represents a desire to build on SoRDS. This is also in line with council planning processes and timeframes.

BEYOND 2025

SOUTHLAND

Regional Long Term Plan

The colours represent the Southland landscape - wilderness, farmland, rivers, lakes and the sea.

Whakataukī gifted by Waihōpai Rūnaka.

He ara whakamua, he ara hou a Murihiku i tēnei ao hurihuri

Moving forward, new pathways for Murihiku Southland in a constantly changing world

This statement represents the long-term plan's desire to use the learnings of the past to guide the future.

16

Workstreams established to inform the plan

4

Advisory or working groups established to deliver specific outcomes identified in the workstreams

Environment and Climate Change

- Net Zero Southland
- Land
- Water

Diversification of the Economy

- Destination Development and Management
- Technology and Manufacturing
- Future Crops and Food Opportunities
- Aquaculture

Strengthening of Local Business

- Business Enablement, Capability and Competitiveness
- Primary Sector

Resources and Infrastructure

- Housing
- Transport
- Digital Connectivity and Data
- Future Energy

Population and People

- Retention and Attraction
- Urban Culture and Development
- Skilled Workforce Development



2 Existing regional strategies reviewed as part of this process

200+ Businesses from around the region directly consulted to gain insights on their challenges and opportunities

6+ Separate surveys to understand community views and gain insights on key topics

100+ Presentations to community groups, organisations, businesses, iwi and agencies around the region

20+ Separate pieces of research facilitated as inputs into the process

9 Public roadshow events held around the region

50+ Reports and research reviewed

20+ Hui with mana whenua representatives and maata waka to ensure Māori perspectives included

The Plan and how it works

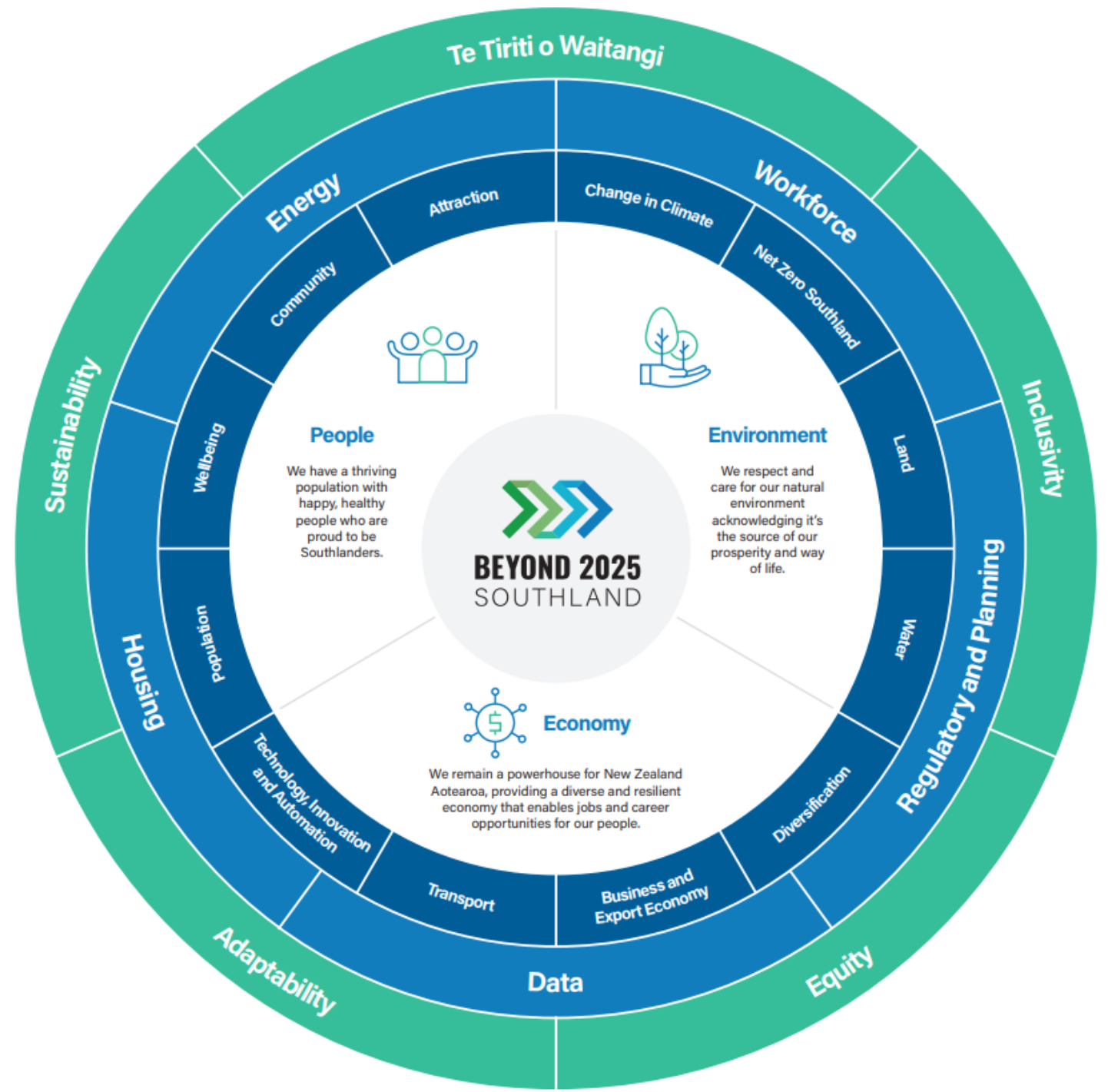




BEYOND 2025 SOUTHLAND

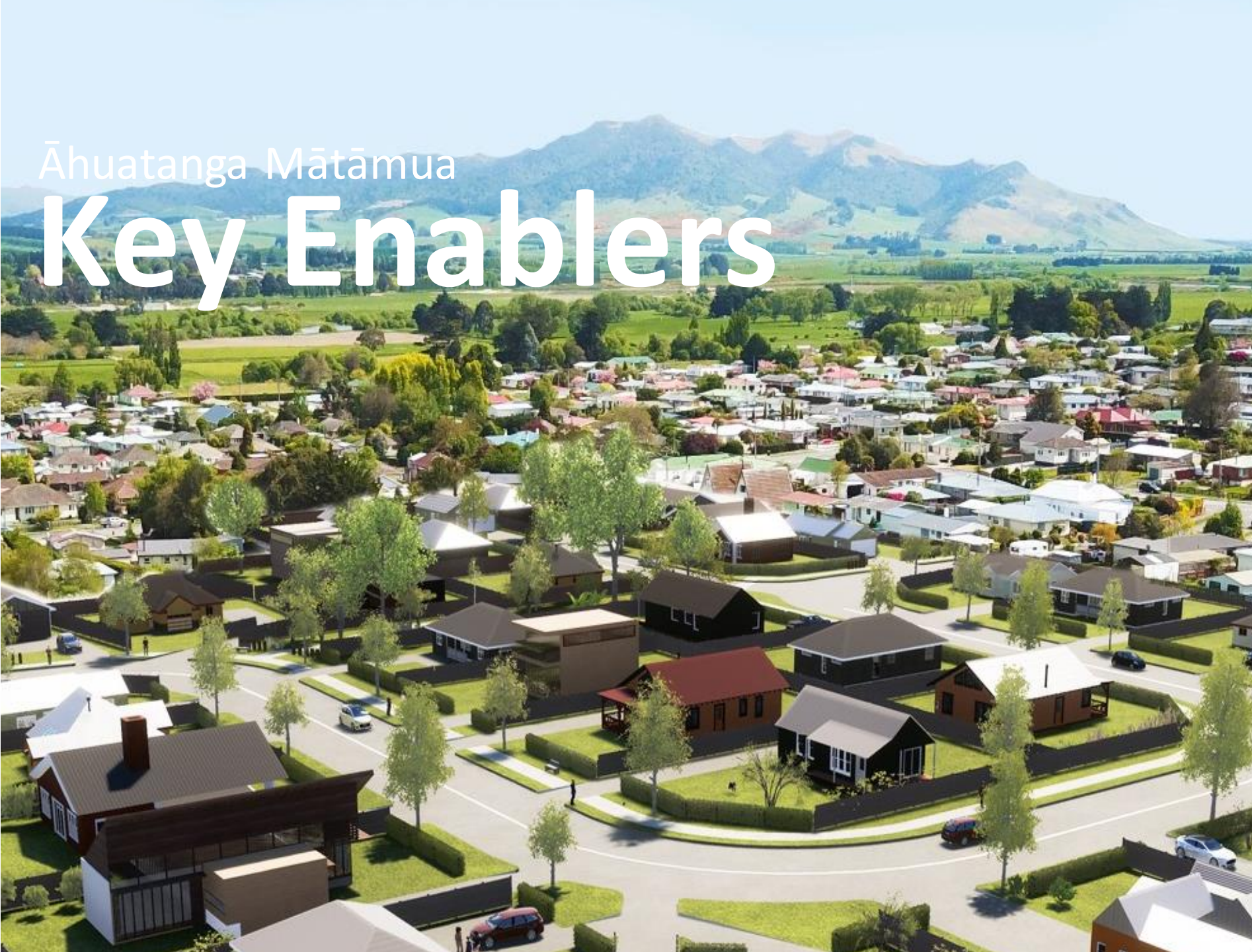
Regional Long Term Plan

- Guiding principles
- Key enablers
- Sections



Āhuatanga Mātāmua

Key Enablers



Housing

We will support and enable the development of quality housing within the region to better meet the needs of our people.



Workforce

We will implement a joined-up approach to labour market planning so we all clearly understand what our skilled workforce shortages are now and into the future and how we will work collaboratively together to address them.



Data

We need access to timely, comprehensive, and accurate data to inform policy, assist decision-making, and prioritise resources for growth and development via collection, analysis, visualisation and data governance.



Energy

We will support the region's future energy needs in a clean and resilient way, while ensuring affordability for our communities and remaining globally competitive for new industry.



Regulatory and Planning

We want to align our regional development aspirations with the rules that dictate what we can and cannot do with our land, water and people, and we want rules that enable a prosperous and sustainable future for Southland Murihiku.

Kāhui Tangata People

We have
a thriving
population with
happy, healthy
people who
are proud to be
Southlanders.



Taupori

Population



Oranga

Wellbeing



Hapori

Community



Whakamanea

Attraction

**BEYOND 2025
SOUTHLAND**

Regional Long Term Plan



Ōhanga

Economy

BEYOND 2025
SOUTHLAND
Regional Long Term Plan

We remain a powerhouse for Aotearoa New Zealand, providing a diverse and resilient economy that enables jobs and career opportunities for our people.



Kanorautanga
Diversification
Ahumoana
Aquaculture
Tāpoi
Tourism



Pakihī me te Hoko Whakawaho
Business and Export Economy



Tūnuku
Transport



Hangarau Auaha me te Whakaauonoa
Technology, Innovation and Automation

Taiao

Environment

We respect and care for our natural environment acknowledging it's the source of our prosperity and way of life.



BEYOND 2025
SOUTHLAND
Regional Long Term Plan



Āhuarangi Hurihuri
Change in Climate



Murihiku Tukuwaro Kore
Net Zero Southland



Whenua
Land



Wai
Water

Focus Area:

Improving Communication, Engagement and Collaboration



Digital Portals
& Repositories



Partnership
Approach



Physical Hubs



Focus Area:

Regional Coordination and Leadership

Allows many voices to be heard and perspectives understood

Assumes other existing groups continue

Purpose to be confirmed so no duplication

Interconnected with each other and connected to Mayoral Forum



Housing



Data



Tourism



International
Education



Climate Change
& Net Zero



Energy



Aquaculture



BEYOND 2025
SOUTHLAND
Regional Long Term Plan

Focus Area:

Regional Planning and Alignment

Important to provide a single, clear regional voice to Government and others, but also ensures the best use of resources.

Informs policy, regulation and rules and complements statutory plans

Ensures different perspectives are included

Development of
new plans

Refresh of
existing plans

Implementation
of refreshed or
existing plans



This Plan is about empowering us and our region



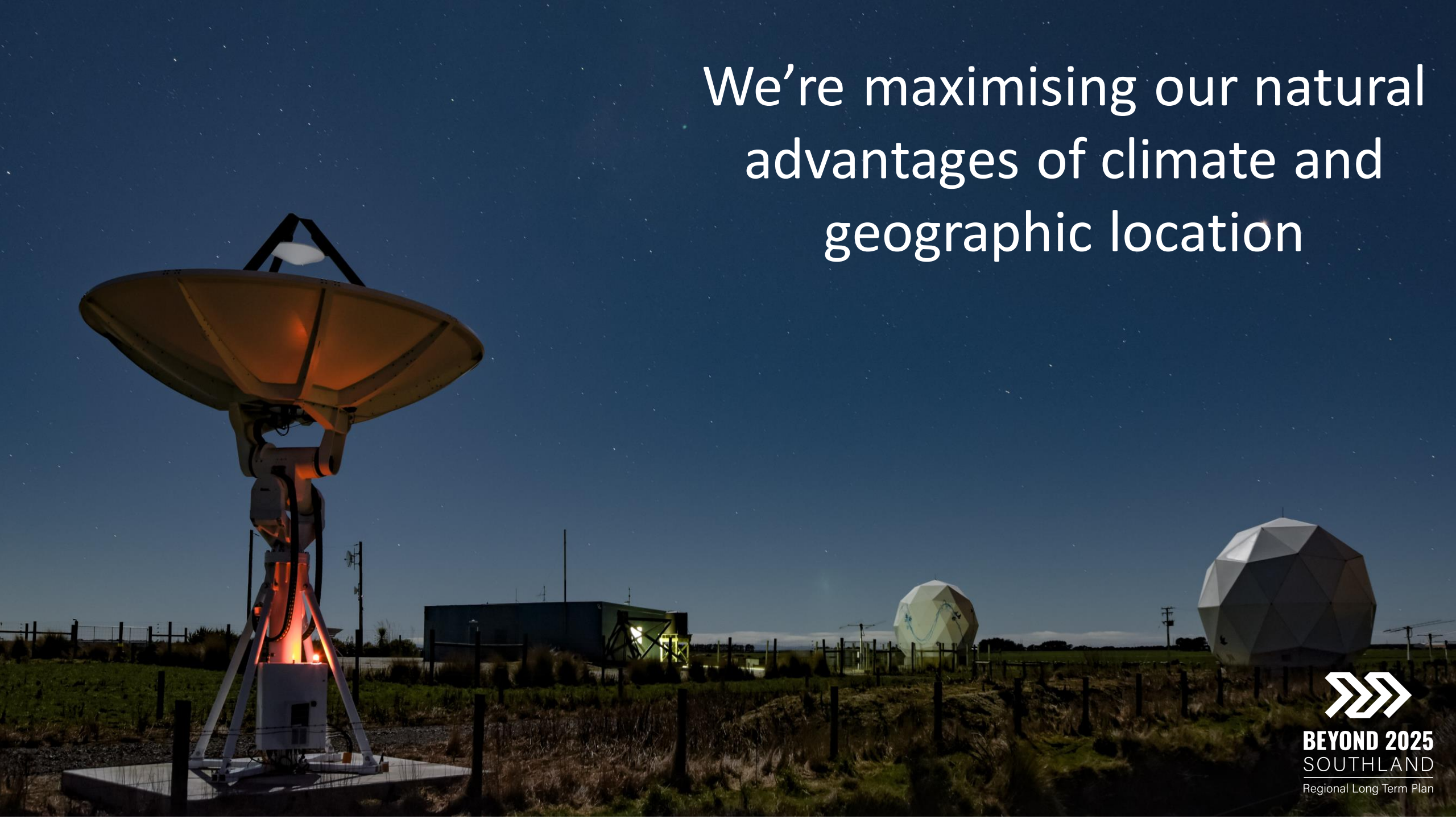
It shows that we're building on our successes...





**...with exciting new
projects on the horizon**

We're maximising our natural advantages of climate and geographic location



BEYOND 2025
SOUTHLAND
Regional Long Term Plan



We are going to keep embracing technology and change and the opportunities it brings



We're ensuring we have places and spaces to enable people to connect



Photo: Southland Express



BEYOND 2025
SOUTHLAND

Regional Long Term Plan



We want to keep looking
after our people while
also realising their
potential



BEYOND 2025
SOUTHLAND
Regional Long Term Plan



**We're supporting our
communities to diversify**



BEYOND 2025
SOUTHLAND
Regional Long Term Plan



**We're making our
businesses even
more innovative**



BEYOND 2025
SOUTHLAND
Regional Long Term Plan

We want to tell, share and live all the different parts of our Southland Story





**We want to look
after our special
place in the world**



BEYOND 2025
SOUTHLAND
Regional Long Term Plan

Next Steps

Process to be facilitated by Great South in partnership with Mayoral Forum, mana whenua, key stakeholders and others.

STEP ONE: Develop an Implementation Plan

- Prioritise projects and recommendations (especially Key Enablers)
- Consider timeframes - short, medium and long term
- Consider resourcing and connect with realistic expectations for delivery
- Prioritise alignment with others e.g., Council Long Term Plans





BEYOND 2025 SOUTHLAND

Regional Long Term Plan



BEYOND 2025
SOUTHLAND
Regional Long Term Plan



southland just transition



**MINISTRY OF BUSINESS,
INNOVATION & EMPLOYMENT**
HĪKINA WHAKATUTUKI