

CPlay – Update – Ready To Start



10

DAYS TILL THE SECURITY FENCES GO UP

Let's play! For healthier bodies.
Smarter & happier minds.

CPlay
Caroline Bay Playground Upgrade

Platinum \$50,000 over
SPONSORS

TIMARU
DISTRICT COUNCIL
Te Kaunihara a Raike
o Te Tahi o Maru

**Community
TRUST**
Mid & South Canterbury

TRUST
AORAKI

Lotto
NZ Lottery
Grants Board

Diamond \$50,000
SPONSORS

HILTON
HOTELS

Yili
Oceania
DAIRY

**Pub
Charity**
Limited

**Timaru
Civic
Trust**

Wednesday, 8 March 2023

Hi

Oh my goodness, the start day is almost here! On the 20th of March, the security fences go up and the playground site will be cleared ready for the earth movers! So exciting!

There's just two weekends left, to visit the playground, play and take photos to record your nostalgia.

The Paddling Pool, Courts, BBQs and Bike Skills Park will be open, but the rest of the area will be closed to the public until open day around October/November 2023.

"For most of our team of volunteers and their families, it's been four years of many personal voluntary hours. It felt like a daunting task at the start, and now here we are, finally nearing the day the construction gets underway. It's really exciting. The support and help from the community has blown us away, and we can't wait to see the CPlay plans come to fruition so we can all play together for healthier bodies, smarter and happier minds."

- Roselyn Fauth - CPlay Design Team



Annabelle Fauth (4) enjoying the sunshine and playing at the Caroline Bay Playground before it starts to change. She was a baby when her parents Chris and Roselyn Fauth first joined the CPlay team, and she will be five when the playground is complete.

We are still fundraising... so come get your car washed this Sunday!

Bring your donation down to the Timaru Library Carpark this Sunday morning to get your car washed.

Eco-friendly Car Wash Fundraiser for CPlay

Timaru Library Carpark

10am - 12pm (Last cars to enter by 11:45 am please.)

\$5 Cash Only - Donations Welcome

Thank you to Timaru District Council for organising this event as part of the Seaweed 2023 events. This will be a great opportunity for tips on how to can clean your car in a more eco-friendly way.

We would love a hand. If you can volunteer, please arrive at 9:30am to sign-in to the health and safety form, set-up and get ready to have some fun.



Come get your car washed

Sunday
10am-12pm
@Timaru Libray
Car Park

Eco-Friendly
Car Wash

\$5
entry
(cash only)

CPlay
Caroline Play Playground Upgrade

Fundraising update

The total budget for the new Caroline Bay Playground remains at \$2,982,000 excl GST.

Thanks to your support CPlay has raised \$2,832,000.

CPlay volunteers are working to raise \$150,000 to match scope with budget.

The elements of project currently under contract agreement (earthworks, surfacing, playground equipment) = 96.2% of the project's costs.

There are additional things that CPlay wish to commission for the playground. This will be determined by how our fundraising goes to match the budget to the scope. We intend to approach locals to help with metal fabrication, painting, signage and building.

We have been working on funding applications for grants. If you have been meaning to donate, we would love your help. You are more than welcome to contact us info@cplay.co.nz if you would like to purchase something from our wishlist for CPlay.

Every bit helps. <https://cplay.co.nz/donate>

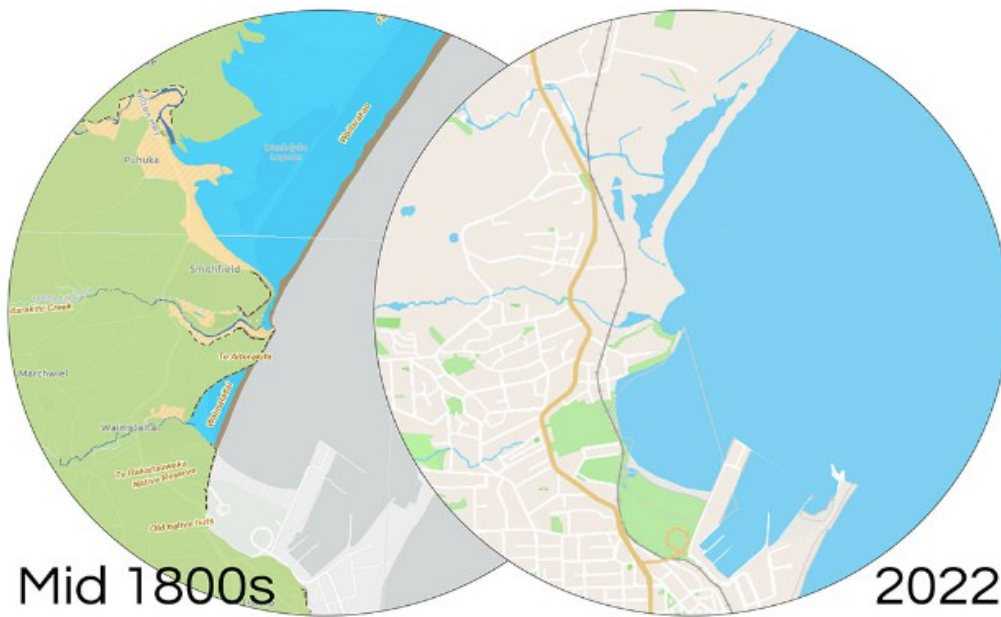
Here's the progress on the Mōkihi Net Seesaw

This is a bespoke design for CPlay created by the Playground Centre team who tweaked their design, so the net seasaw could look and feel a bit like a mōkihi (a raft, fashioned from bulrushes and flax). These simple vessels were excellent for crossing lakes and rivers. This mōkihi seesaw play item, can help inspire imaginative play and help people learn how Māori traversed the area. (Note, what you see at the bottom of the mōkihi in the photo is mainly the ground support that you won't actually see).

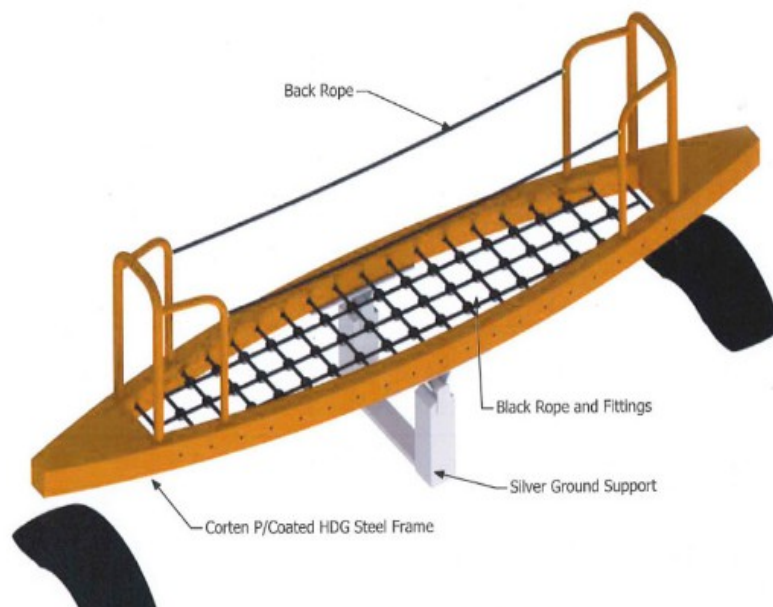
Changes to the Timaru Coastline over 170 years. This map is based on [digitized survey maps](#) that were created in the mid 1800s and today's satellite imagery from 2022. They give an insight into traditional areas of mahika kai (sites of significance to Māori for resource gathering) such as wetlands, lagoons, and estuaries before they were modified.

Look how vast the wetlands/lagoons used to be. Here you can see the last 10% of the Waitarakao Washdyke lagoon that remains.

"Waimātaitai was a hāpua (lagoon) situated near the Timaru foreshore, renowned as an important source of mahinga kai. In 1880 Hoani Kāhu from Arowhenua described Waimātaitai as "e rauiri" (an eel weir) where tuna (eel) and inaka (whitebait) were gathered. This saltwater lagoon was eventually lost in 1933 due to changes in sediment drift caused by the creation of the Port of Timaru." - kahurumanu.co.nz/atlas



CAROLINE BAY - MOHIKI SEE SAW



Contractors met on site with CPlay

Our CPlay design team met with the CPlay project manager, and some of the project contractors, Numat (playground surfacing) and Rooney Earthmoving. We discussed the sequencing of project and decided our goal of opening in September/October could be a little optimistic. We are trying to work out how to factor in the cold winter mornings and how it could impact the time the rubber pour and play surfacing could take to cure. So the re-opening could be more like October/November.

The sequencing for the playground had to be carefully thought out, to avoid going back over completed areas. The plan is to start at the flying fox and to work out from there.



Thank you Timaru District Council

CPlay volunteers have been meeting regularly with TDC on a Joint Steering Group (JSG) for a few years now, and we met this week to give an update before the security fences go up on the 20th.

We are very grateful for the support, ideas, problem solving and planning that staff have given to this project. On behalf of the CPlay and supporters, thank you so much to the TDC. We wouldn't be where we are now without you.

"CPlay is a great example of local community volunteers working with their council to achieve positive outcomes for the wider community to benefit from." - Owen Jackson (OJ)



Thank you to our amazing sponsors!



See who has donated here: cplay.co.nz/supporters

Regards
CPlay Team



Visit our website: www.cplay.co.nz
Join us on Facebook: [facebook/CPlayTimaru](https://www.facebook.com/CPlayTimaru)

Thank you
from the CPLay team



CPlay Caroline Bay Playground Upgrade