



Friday, 5 May 2023

# Hello

**Have you popped down to see the playground construction?**

The CPlay volunteers and their families are enjoying seeing the progress and are so excited to see all the hard work going in, and the foundations of the playground being created. Thank you Rooney Earthmoving, Curle Construction (equipment removers and installers), and Playground Centre.

Here's a summary of the progress we are making:



**Above:** The ship is taking shape! It's so exciting to see the plans coming to life.

**Below:** You can see in the render below that there will be lots of ways to climb on the ship. You could use the ladders, climbing grips and rope nets, to climb onboard. Get inside from ground level or use the ramp to access the "poop deck" - Photo by Playground Centre.

**Below:** You can see in the render below that there will be lots of ways to climb on the ship. You could use the ladders, climbing grips and rope nets, to climb onboard. Get inside from ground level or use the ramp to access the "poop deck" - Photo by Playground Centre.



This month Rooney Earthmoving has been busy stripping topsoil, backfilling with the local river run, compacting the area with a roller and trenching, and installing drains under the Flying Fox area.

The earthworks will mitigate drainage, stabilize the ground for the surface and foundations and help to make the surfaces easier to use for those in wheelchairs, etc...

A set-out survey was completed in April. This was an integral part of the preparation for the playground's construction work. Rooney Earthmoving surveyed the site and used our working drawings to transfer the plan onto the land. It is critical to set out the exact positions of the paths and equipment so that the "fall zones" of play equipment do not overlap, and the specific safety surfacing is in the correct places.

The next step is for our playground safety auditor to visit the site. They will use the "set out" markings on the ground to double-check that the position of paths and equipment meets best safety practices. Having these checks throughout the project, rather than just at the end, enable us to remedy any issues and make improvements without causing hold-ups or inefficiencies in the construction schedule.

At the moment our construction team is doing the preparation work to construct the concrete curbs. As well as a tidy way to finish the edges, the curbs set the finished height for the final surface. Once the Kerbs are in place the construction team will be able to use this level when preparing the other surfaces and installing equipment.



Here are some photo's taken by our CPlay volunteer Roselyn Fauth, showing some of the progress made so far.



Above and Below, representatives from CPlay, Rooney Earthmoving, Curle Construction (equipment removers and installers), and Playground Centre discuss the plan of attack to construct the playground.





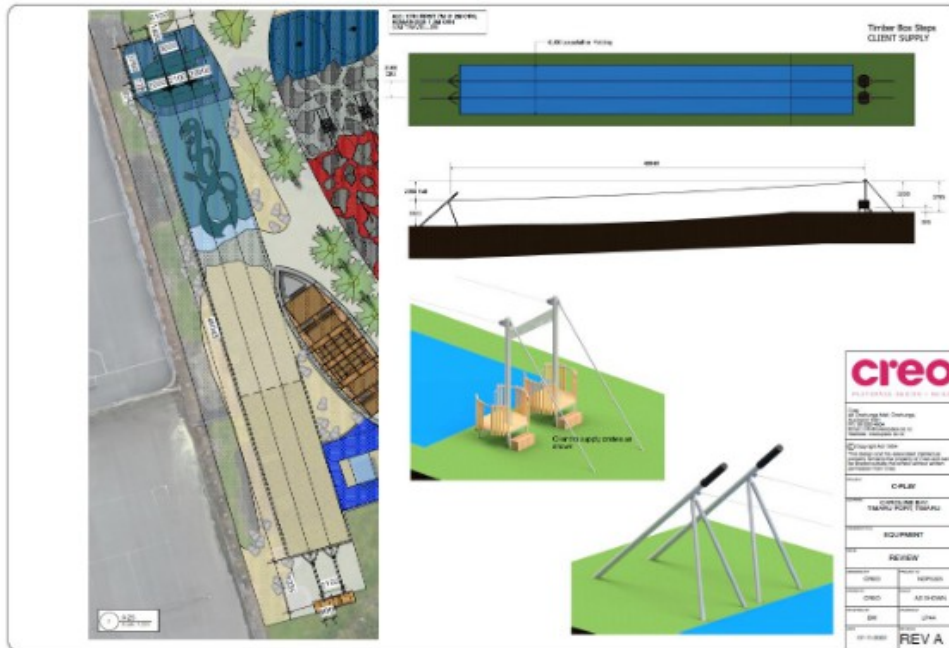


Annabelle Fauth, 4, watches the preparation work being done to be able to install the concrete curb.



This area will soon be the flying fox. The first step was to scrape the topsoil away and backfill with river run. There's a concrete stormwater pipe that we have had to design the playground around which is in this area. So a lot of care has been taken to avoid damaging the infrastructure underground during the earthworks.

Near the end of the year, you could be whizzing down here on the 50m tandem flying fox! We have kept the hedging and trees at the left and will have a swale between the courts and flying fox to help collect and drain stormwater.



The flying fox has been themed around the Timaru Volunteer Rocket Brigade who saved 100 lives. Kids and adults can imagine being in the thick of a sea rescue and trying to save each other from a sinking ship by zipping to safety.



ABOVE: A Cry for Help the Life Line from the Shore. A Cry for Help, the Life-Line from the Shore, Rocket Apparatus used by the Volunteer Life Brigade. Illustration for The Illustrated London News, 8 January 1837. The volunteers used a 'Rocket Life-saving Boxer' to fire a line over a stricken ship. The line had a heavier rope with a tail-block and pulley attached. This was secured to the ship and a breeches buoy, which could then be hauled between the ship and the safety of the shore.



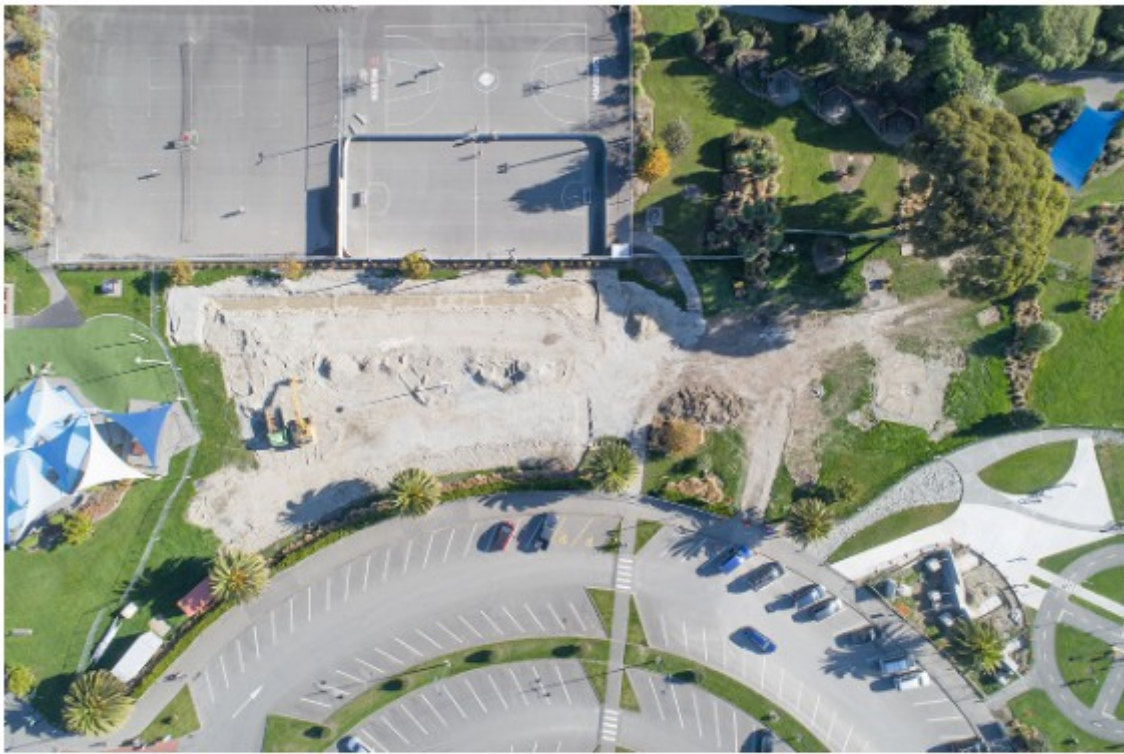


Before the earthworks got underway, sisters, Medinella 8 and Annabelle 4 Fauth, were shown how the Rooney Earthmoving team use GPS to mark out the playground plans on the surface.

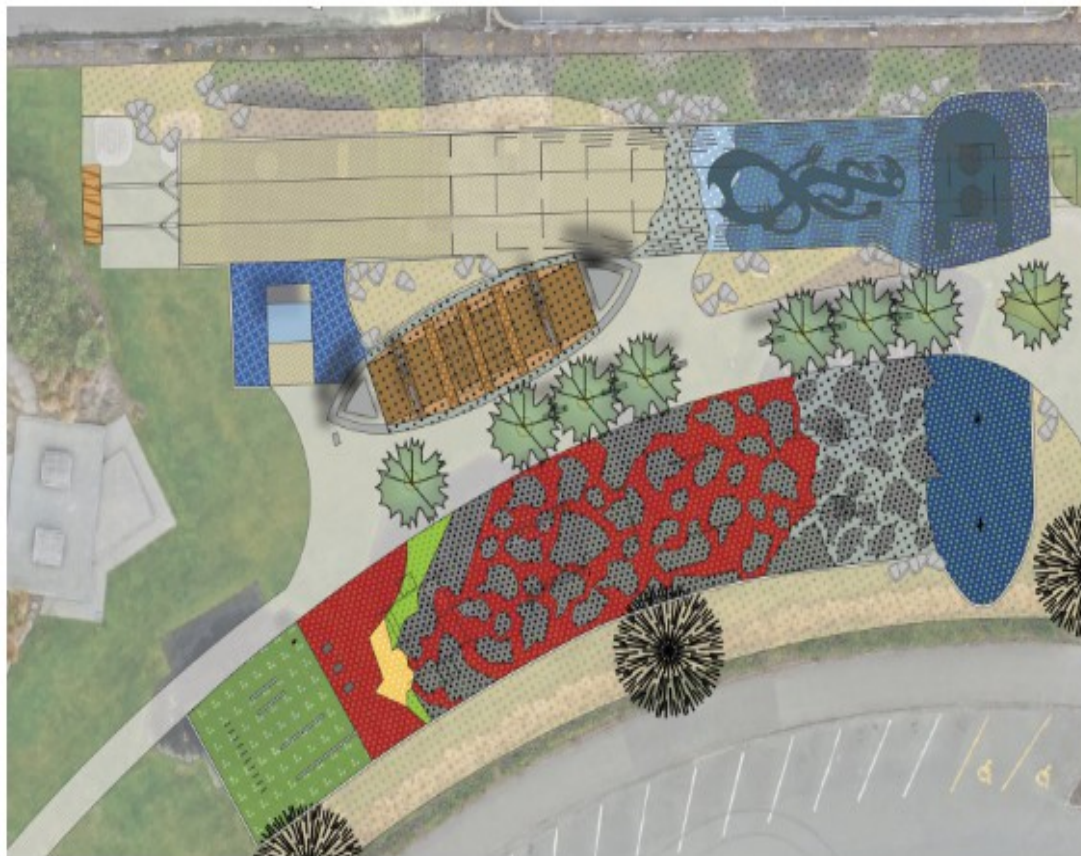


Here you can see a smooth surface prepared for the concrete curb. We are planning a rain garden between the Floor is Lava area and the hedge to help drain away storm water.





A drone photo taken by Jack Rushton in April shows the progress at Caroline Bay. These areas will be the Flying Fox, Floor is lava, mouse wheel, and double cyclops swing over a play surface inspired by the Alexandra Life Boat.



Financially there are sufficient funds deposited to build the essential playground. CPlay is still seeking funds from community organisations and grant providers to add some refinements we know will further enhance the value and functionality of the space. The CPlay Design Team is continuing to meet to work through these potential enhancements and match them to funding availability.

**Essential Budget:** \$2,982 M

**Funds raised:** \$3.035 M

**Expenditure to date:** \$1.319 M

So far we are on track to complete the playground in October 2023.



Such a lovely family and a wonderful donation! Benjamin and Belinda said they had been thinking about making a donation to the CPlay project for a while and were inspired by what the legacy of play will create for years to come for their family and future generations. *"With 3 young children we are going to be spending plenty of time down here this summer and for many more to come"*, said Benjamin.

Thank you so much to the Skinner Family! Here's Benjamin, Belinda, and their children, Freddie, Bianca and, baby Lucinda holding up their donor certificate by the security fence of the new playground.



We hope you are enjoying seeing the progress too! We'll be in touch soon!

Regards  
CPlay Team



*CPlay - Caroline Bay Playground Upgrade Project  
By the Community for the Community*

[cplay.co.nz](http://cplay.co.nz) | [facebook/CPlayTimaru](https://facebook.com/CPlayTimaru)

[Unsubscribe](#)

CPlay Caroline Bay Playground Upgrade

**Thank you**  
from the CPlay team

