



What a perfect theme “Rotary Connects the World” is for the work we do around The Rotary Foundation.

I am excited about the new challenges ahead this year in my last as the District Chair of The Rotary Foundation.

In the words of Foundation Trustee Chair, Gary Huang; “ *There is a bit of wisdom that says ‘wherever you go, go with all your heart’ So open your heart and give to your Foundation. It may be the most important thing you ever do*”

### Support for Polio Plus from the amazing Queen’s High School Interact Club

The girls ran in international food court one lunch-hour. They made and sold Sushi (Japan), Churros (spanish), Poutine (Canadian), and spring rolls and Dumplings (Chinese). They decided to hold an International Food Court because it was an International project. They sold out within minutes, and it was a very successful event.



Beforehand, they had made a presentation to the whole school at assembly explaining why they were fundraising, and introducing Polio Plus to the student body. At a club meeting they viewed information on Polio Plus and the history of Rotary's involvement and commitment to the eradication of Polio. They also looked at images of Polio in New Zealand in the past. Queen's High School has an interesting link to Polio, as one of the early teachers at Queen's had suffered Polio as a child, and a number of current staff remember, as students, hearing the clanking sound of her calipers as she was walking up and down the halls. Jane, who was apparently a lovely, warm-hearted and beautiful woman, died relatively early as a result of the syndrome that follows survivors of polio into adulthood, and they have a room named after her - the Jane Paris Room.

They have donated \$300 to the District to support the End Polio Campaign. Well done.



DG Tania Lowery has shown the emphasis she wants in her year

Do you have your personal challenge container started?

Will your club support DG Tania as she “rides the trains in Sydney for Polio.

Wanaka Rotary Club has kickstarted the year by donating **\$9000** toward Polio Plus

## Ride Like a Girl – Polio Movie Event – ask Lionel Wilson about this - email: [lwilsonfamily@xtra.co.nz](mailto:lwilsonfamily@xtra.co.nz)

Each Year, The Rotary Foundation arranges a **Polio Movie Event** as a fundraiser for End Polio. This year's movie is **[Ride Like a Girl](#)**, the inspirational true story of Michelle Payne – the first female jockey to win the Melbourne Cup.

The public release date in Australia is Thursday 24<sup>th</sup> October, however clubs will be able to arrange pre-release screenings with their local cinema **from 3<sup>rd</sup> October**. This movie will appeal to all demographics so you may wish to consider screenings at times suitable for family audiences. Gala events are another great option, perhaps with a horsey theme! To help clubs promote the event, a template has been created in PowerPoint that will allow you to quickly produce posters, flyers and Facebook posts. Just insert details for your club and event.

This a great movie and a great fundraiser for End Polio – let's all get behind it and make it a huge success!



Last year, Rotary members raised US\$414.7 million for The Rotary Foundation which transforms gifts into service projects that change lives both close to home and around the world. Read our full report at [www.rotary.org/en/annual-report-2018](http://www.rotary.org/en/annual-report-2018)

---

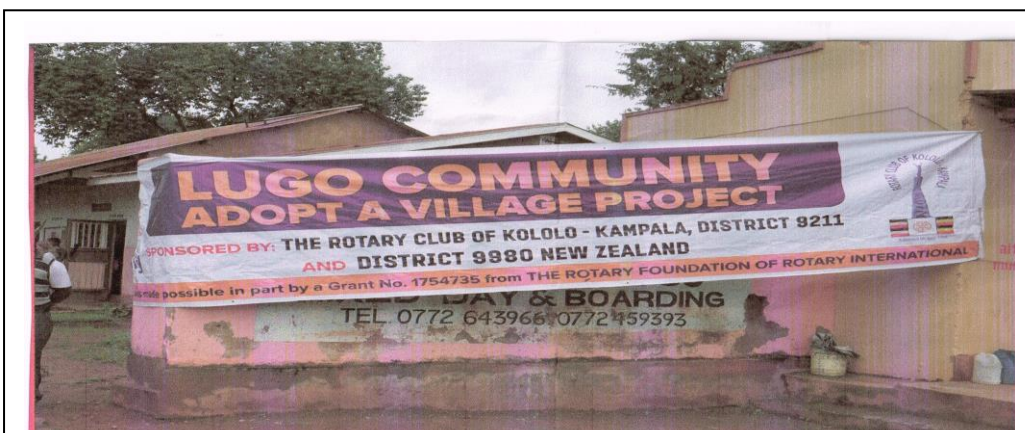
### Foundation Giving

Most clubs contributed to the Rotary Foundation last year. Thank you for that. Some clubs donations were too late to be credited to 2018-2019 so aim to get you contributions in as soon as possible. June is too late!

As the numbers in our clubs get fewer the funds contributed to The Rotary Foundation are less, and so what we can use to help others through District Grants and Global Grants is less. Think about this when planning your giving this year.

### Paul Harris Recognitions

Most clubs have a number of credits they can use to recognize Rotarians and members of our community. Please make sure these are used. If you are unsure of the number available for your club get in touch with me at [macboyle@xtra.co.nz](mailto:macboyle@xtra.co.nz)



**President of Invercargill East Jan Pfeifer and her husband Murray have been to Uganda working as part of a community group. Look what they saw.**

# The Rotary Foundation – Our Charity of Choice

## Is it yours?



## THE ROTARY FOUNDATION

## HOW TO CONTRIBUTE

A gift to The Rotary Foundation allows Rotary to improve communities at home and around the world by strengthening peace efforts, providing clean water and sanitation, supporting education, growing local economies, saving mothers and children, and fighting disease.

You can choose to make a one-time gift, or enroll in Rotary Direct, Rotary's recurring giving program, to support the Rotary Foundation's efforts year round.

The Rotary Foundation recognizes donors to express its gratitude for your commitment and offers individual and club recognitions, as well as naming recognitions that let you honour a friend or family member with a named or endowed gift.

Individual recognitions levels are detailed below:

Centurion member	When you give NZ\$100 per year for as long as that level of donation can be made. Members receive a Rotary Centurion lapel pin.
Rotary Foundation Sustaining Member	When you give US\$100 or more per year to the Annual Fund.
Benefactor	When you include the Endowment Fund as a beneficiary in your estate plans or when you donate US\$1,000 or more to the fund outright. Benefactors receive a certificate and insignia to wear with a Rotary or Paul Harris Fellow pin.
Paul Harris Fellow	When you give US\$1,000 or more to the Annual Fund, PolioPlus, or an approved Foundation grant. To recognise someone else as a Paul Harris Fellow, you can give that amount in their name. You are recognised as a Multiple Paul Harris Fellow with each additional gift of US\$1,000.
Paul Harris Society member	When you give US\$1,000 or more annually for as long as that level of donation can be made. Donations can be made to the Annual Fund, PolioPlus, or an approved Foundation grant. Members receive a certificate and insignia to wear with a Paul Harris Fellow pin.
Bequest Society member	When you give US\$10,000 or more via your estate plans. All society members receive recognition from the Trustees of The Rotary Foundation, and donors can choose to receive an engraved crystal recognition piece and a Bequest Society pin.
Major Donor	When your cumulative donations reach US\$10,000. You can choose to receive a crystal recognition piece and a Major Donor lapel pin or pendant.
Arch Klumph Society	When your cumulative giving reaches US\$250,000. You will be invited to an induction ceremony at the Rotary International headquarters in Evanston, Illinois, USA and your picture and biography will be included in the Arch C. Klumph Society interactive gallery. You will also receive invitations to society events, along with membership pins and crystals that commemorate giving at various levels.

Information a donating to The Rotary Foundation is available at: [www.rotary.org/myrotary/en/take-action/give](http://www.rotary.org/myrotary/en/take-action/give)

If you would like further information or payment forms relating to any of the individual recognition levels detailed above, please contact:

**PDG Trish Boyle Rotary Foundation Chair**

**Mobile: 027 333 1339**