

## 1. Site History

85-91 Ross Road Park, Upper Kedron (Figure 1 & Figure 2) was acquired through Brisbane City Council's Bushland Acquisition Program in 2010 due to its (a) high-level of biological diversity; (b) ecological integrity; and (c) significant corridor linkages.



*Figure 1: Ross Road Park today*

The site is bordered by private residential property in the north-east and east, private rural property in the south-east, and adjoins Bellbird Grove Picnic Facility within D'Aguilar National Park to the west. Overall, Council's plan for restoration at this site consists of 22 separate restoration management units (RMU) (Figure 3).

The site was previously used for agricultural purposes with paddocks used for grass feed for cattle. Five generations of the Marshall family ran a dairy farm at the property, until 2004. At that time around 60 head of cattle were run on the site. The fig trees onsite and adjoining blocks were planted by family in 1881 and continue to thrive. As a result of previous land use, exotic pasture grasses, legumes, woody weeds and vines can be found in parts of the reserve. Weed management activities have continued to be applied within the reserve to control weed species and facilitate the regeneration of native plant species. The site is open to the public and forms part of Council's Conservation Reserves network.

The site is generally undulating in land form along floodplain terraces, with Cedar Creek running in an easterly direction through the site. There are patches of existing native vegetation within the Restoration Management Units (RMUs) that are mapped as 'non-remnant' by the State Government. These areas include previous planting effort delivered



## BCC/Rotary – Ross Road Park, Upper Kedron - Community Planting Event Package

through Council's 2 Million Trees program. Riparian restoration work that will be delivered through this environmental offset project will enhance a weed dominated section of Cedar Creek and improve fauna habitat values within this significant ecological corridor.



*Figure 2: Ross Road Park: 1995 (top) 2018 (bottom) shows revegetation already achieved*

The intent of the Rotary planting event that is scheduled for 24 April 2021 is to continue revegetation work within Ross Road Park. It is proposed that the planting event concentrate its activities within RMU3 and RMU13 with the installation of 2500 native plants. These RMU's pose a challenge to restoration, as they are dominated by non-native plant species which actually facilitate habitat for local wildlife species. As such, delivery of restoration work within RMU3 and RMU13 have been staged to minimise disturbance to wildlife and manage the riparian zone and reduce the potential for erosion. Weed control will be delivered through a mosaic approach within these areas, which will expose soil areas for preparation and planting

## **BCC/Rotary – Ross Road Park, Upper Kedron - Community Planting Event Package**

over a period. This presents an opportunity for groups such as Rotary to revisit the site and contribute to ongoing riparian enhancement work along Cedar Creek.

Council is committed to enhancing the biodiversity values and ecological resilience of Ross Road Park. Restoration work being delivered by the Environmental Offsets program in partnership with Rotary will significantly contribute to this and contributes to the work being delivered to maintain Brisbane as the most biodiverse city in Australia.



## 2. Site Map



Figure 3: Ross Road Park: Restoration Management Units

### 3. Plant Species – RMU3

5. Vegetation Requirements – RE 12.3.16 Species List							
Botanical Name	Common Name	Density %	No.	Botanical Name	Common Name	Density %	No.
<b>LARGE TREES (T1) (75% planted at 2 m centres)</b>							
<i>Aphananthe philippinensis</i>	Rough-leaved elm	5	224	<i>Jagera pseudorhus</i>	Foambark	5	224
<i>Araucaria cunninghamii</i>	Hoop pine	1	45	<i>Lophostemon confertus</i>	Brushbox	6	269
<i>Arytera divaricata</i>	Coogera	1	45	<i>Macaranga tanarius</i>	Macaranga	2	90
<i>Castanospermum australe</i>	Black bean	16	717	<i>Mallotus discolor</i>	Yellow kamala	5	224
<i>Cryptocarya triplinervis</i>	Three-veined laurel	4	179	<i>Melia azedarach</i>	White cedar	1	45
~ <i>Commersonia bartramia</i>	Brown kurrajong	1	45	<i>Olea paniculata</i>	Native olive	1	45
<i>Drypetes deplanchei</i>	Yellow tulip	6	268	<i>Podocarpus elatus</i>	Plum pine	1	45
<i>Diospyros australis</i>	Black plum	2	90	<i>Polyscias elegans</i>	Celerywood	1	45
<i>Elaeocarpus grandis</i>	Blue quandong	3	135	<i>Planchonella pohlmiana</i>	Yellow boxwood	5	224
<i>Ficus macrophylla</i>	Moreton Bay fig	1	45	<i>Syzygium australe</i>	Brush cherry	1	45
<i>Ficus opposita</i>	Sandpaper fig	1	45	<i>Tristanopsis laurina</i>	Water gum	2	90
<i>Glochidion ferdinandi</i>	Cheese tree	3	135	<i>Vitex lignum-vitae</i>	Satinwood	1	45
<b>MID-STRATUM (T2) and SHRUBS (S1) (25% planted at 2 m centres)</b>							
<i>Acacia disparrima subsp. disparrima</i>	Hickory wattle	2	90	<i>Capparis arborea</i>	Brush caper berry	1	45
<i>Acacia maidenii</i>	Maiden's wattle	2	90	<i>Carissa ovata</i>	Currant bush	1	45
<i>Alphitonia excelsa</i>	Red ash	2	90	<i>Cryptocarya laevigata</i>	Glossy laurel	3	134
<i>Alyxia ruscifolia</i>	Chain fruit	1	45	<i>Mallotus claoxyloides</i>	Smell-of-the-bush	1	45
<i>Backhousia myrtifolia</i>	Grey myrtle	9	403	<i>Wilkiea macrophylla</i>	Large-leaved wilkiea	2	90
<i>Breynia oblongifolia</i>	Coffee bush	1	45				
<b>GROUNDCOVERS (GC) (100% planted at 1 m centres)</b>							
<i>Adiantum hispidulum</i>	Rough maiden hair fern	5.5	987	<i>Lomandra hystrix</i>	Creek mat rush	33	5924
<i>Alpinia caerulea</i>	Native ginger	5.5	987	<i>Oplismenus imbecillis</i>	Pademelon grass	11	1975
<i>Cordyline rubra</i>	Red-fruited palm lily	5.5	987	<i>Ottochloa gracillima</i>	Graceful grass	11	1975
<i>Dianella caerulea</i>	Blueberry lily	5.5	988	~ <i>Pandorea pandorana</i>	Wonga wonga vine	5.5	987
<i>Doodia aspera</i>	Prickly rasp fern	6.5	116 7	^ <i>Pararistolochia praevenosa</i>	Richmond birdwing vine	-	50
~ <i>Eustrephus latifolius</i>	Wombat berry	5.5	987	<i>Psychotria loniceroides</i>	Hairy psychotria	5.5	987

### Plant Species - RMU13

Botanical Name	Common Name	Density %	No.	Botanical Name	Common Name	Density %	No.
<b>LARGE TREES (T1) (80% planted at 5 m centres)</b>							
<i>Corymbia henryi</i>	Large-leaved spotted gum	23	43	<i>Eucalyptus fibrosa subsp. fibrosa</i>	Broad-leaved ironbark	23	43
<i>Corymbia citriodora subsp. variegata</i>	Spotted gum	1	2	<i>Eucalyptus siderophloia</i>	Grey ironbark	5	10
<i>Corymbia intermedia</i>	Pink bloodwood	1	2	<i>Eucalyptus crebra</i>	Narrow-leaved red ironbark	9	17
<i>Eucalyptus carnea</i>	Broad-leaved white mahogany	13	24	<i>Eucalyptus tindaliae</i>	Tindale's stringybark	5	9
<b>MID-STRATUM (T2) and SHRUB LAYER (S1) (20% planted at 5 m centres)</b>							
<i>Acacia disparrima var. disparrima</i>	Hickory wattle	9	17	<i>Jacksonia scoparia</i>	Dogwood	2	4
<i>Allocasuarina torulosa</i>	Mountain oak	4	8	<i>Lophostemon confertus</i>	Brush box	4	7
<i>Alphitonia excelsa</i>	Red ash	1	2				

Figure 4: RMU3 & RMU13 Plant Species List – A subset of this list will be used for the Rotary Event



BCC/Rotary – Ross Road Park, Upper Kedron - Community Planting Event Package

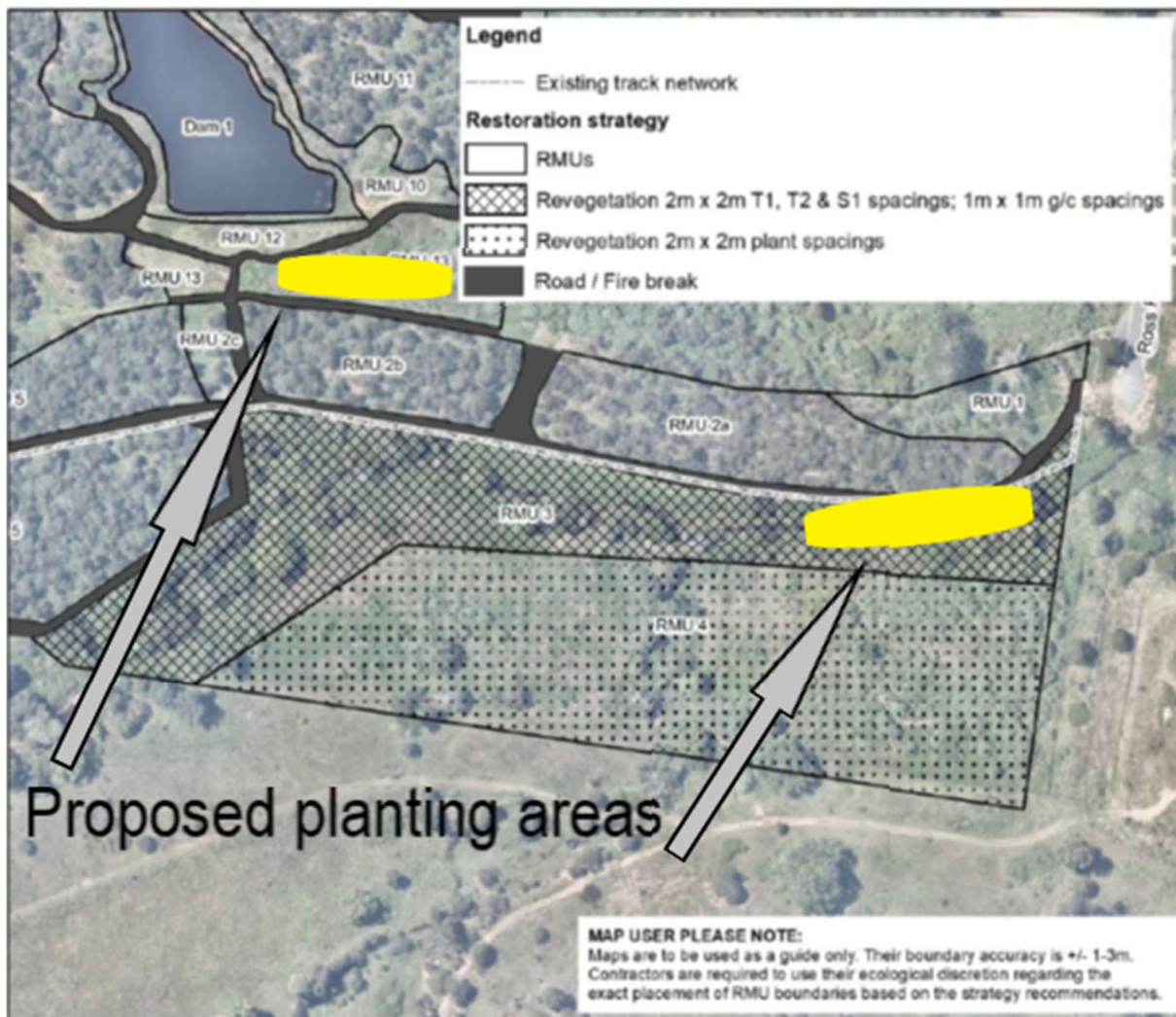
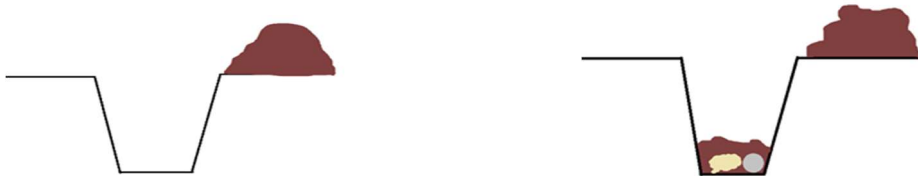


Figure 5: Site Map that depicts location of RMU3 & RMU13 within Ross Road Park

#### 4. Planting tips for beginners

**Note:** Steps 1 & 4 will be completed by contractors for this planting event

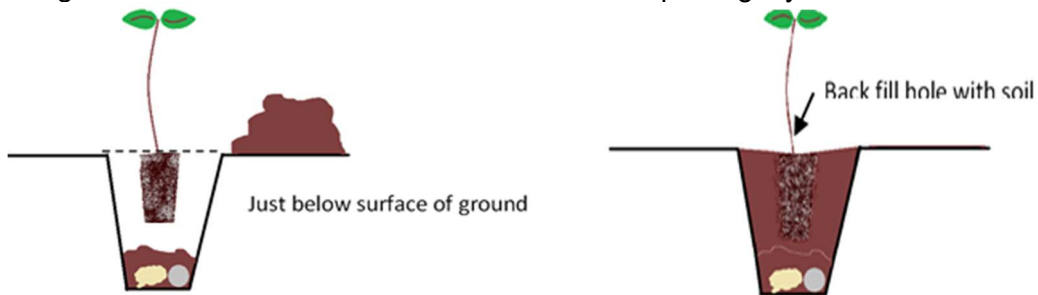
1. Dig hole 2.5 x the size of the root ball Place in loose soil and ameliorants (water crystals fertilizer etc.)



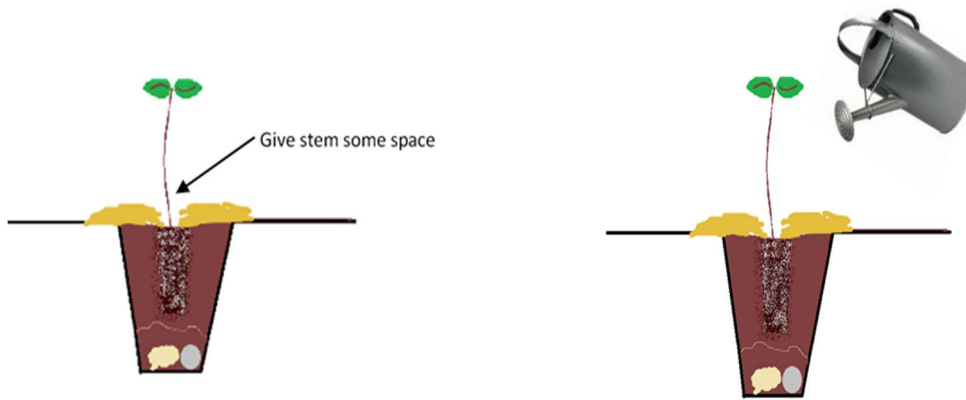
2. Take plant out of the pot by tapping on the base with a trowel then gently lift out taking care not to disturb roots



3. Place the plant in the hole so that it sits a little bit under the surface of the ground. Back fill the hole with the soil and compact lightly.



4. Place mulch around the plant. Make sure the stem is free of mulch or it will rot! Council will then maintain installed plants with a rigorous watering and weed control schedule for a 5-year period.



## 5. Safety Considerations

Please ensure you bring and wear:

- Closed-in shoes
- Long sleeved shirt and pants
- Hat
- A water bottle – Please consider a reusable bottle, rather than a single use plastic item
- Sunscreen

Council/Rotary will provide:

- Sunscreen
- Gloves
- Hand sanitizer
- Water
- Tea/coffee
- Light snacks

Other considerations:

- On arrival, please ensure you sign in immediately for insurance purposes.
- Please advise staff of any pre-existing medical conditions that may impact upon your participation at this time so that they can be effectively managed.