



Health Care should be Universal



Every Child Deserves a Good Education

DONATIONS IN KIND NORTHERN REGION FACTS & FIGURES

Facts and Figures as at 31/10/2019

Summary of Consignments

Total Number of Containers: 978

Estimated Value of Donations: \$57.5 million Total Cost of Freight: \$3.0 million

Summary of Common Donations Consigned

Hospital Beds 8,701	Mattresses 5,540	Patient Trolleys 439	Bedside Cabinets 1,422
Wheelchairs 3,877	Hospital Linen (bags) 17,478	Hospital Medical Supplies (cartons) 48,250	
School Desks 32,662	Books (cartons) 91,136		



Donations in Kind has recently been the recipient of a large quantity of Hospital Beds with approximately 150 being received at the store in the last couple of months. This number is about to increase rapidly with the Mater Hospital finally about to take receipt of the first batch of new beds.

Consignments

To date, a total of equivalent to 11 x 20' containers has been sent to various destinations by Donations in Kind Northern Region during this 2018-19 Rotary year.

Destinations included Sri Lanka, Timor Leste, and Papua New Guinea and the Solomon Islands.

1 x 20' to the Rotary Club of Gizo in the Solomon Islands – a project of the Rotary Club of Mooloolaba in District 9600

3 x 40' containers of hospital equipment to the Ministry of Health in Sri Lanka – a project of Ajit Abeyewardene and the Federation of Sri Lankan Organisations in Queensland.

1 X 20' container to the Kavieng General Hospital in PNG – a project of the Rotary Club of Brisbane in District 9600

1 x 20' container to Dili in Timor Leste – a project of Brendan Ryan and the Rotary Club of Too-woomba South in District 9630

21 x 40' container to the Rotary Club of Port Moresby – a project of Donations in Kind Northern Region

Future Planned Consignments

The following containers are in the planning stage and will happen over the next couple of months:

1 x 20' container for Mogulu in PNG – this container has been packed and is waiting on the finalisation of funding

1 x 40' container for Kimbe in PNG – this container is packed with educational equipment and waiting on the finalisation of funding

1 x 20' container for Kiaunga in PNG – this is a project of the Rotary club of Cleveland and is presently being packed

2 x 20' containers for Christmas Island in Kiribatti – this is a project of the Rotary Club of Goolabalah in District 9640 and volunteers from this Club will be packing the containers this coming weekend

1 x 40' container for Fiji – this is a project of the Rotary Club of Stanthorpe in District 9640. The container is presently in Stanthorpe being packed

1 x 20' container for Rabaul in PNG – this is a project of the Rotary Club of Archerfield in District 9630 and the Dean Brothers. We are waiting on instructions to proceed with the booking of this container.

1 x 40' container for Dili in Timor Leste – this is a project of Bren Milson of District 9640



Gone are the days when school desks were placed in a line with the students facing the blackboard. Schools are now changing to use Flexible Learning Furniture that can be arranged in various configurations allowing the students to work in groups or individually.

As a result of the above, Donations in Kind continues to be the recipient of a large quantity of school furniture.

Your Support is Needed!

Management and Governance

In accordance with the policies of Rotary Australia World Community Service and for the future viability of Donations in Kind Northern Region, it is imperative that we establish a committee structure for the management of Donations in Kind. There are certain tasks and responsibilities that have to be addressed to ensure the success of Donations in Kind. **It is appreciated that any task or responsibility within the Donations in Kind structure could place a significant workload on any single volunteer and it is therefore suggested that rather than a number of individuals taking on these tasks and responsibilities, a number of Rotary Clubs within Northern Region of RAWCS could share these tasks and responsibilities as a Club project with a representative from each of these Clubs serving on the Committee.** Any Club interested in assisting should contact either PDG George Grant or PP John Paskin.

Still seeking volunteers prepared to serve on this committee.

Volunteers

There is a need for fresh and younger volunteers to attend Donations in Kind on Thursday mornings to assist with general warehouse duties and the sorting and packing of donations ready for dispatch to the areas of need in the developing countries. No need to contact anyone, just turn up at 23 Mary Street, Kingston between 8.00am and 12 noon and you will be made very welcome. The welcome mat is still out for more Thursday morning volunteers.

The sourcing of sufficient funds and regular volunteers from Rotary Clubs to meet the needs of Donations in Kind Northern Region is now an issue. Rotary Clubs in general are smaller with membership numbers and limited finances and they are struggling to meet their ongoing commitments.

This issue is not confined to Rotary only and most other community groups and not for profit organisations are experiencing the same issues. I believe that these issues are having an affect on all activities of Rotary Australia World Community Service (RAWCS) and I believe that RAWCS needs to look for alternative sources for funding and volunteers to continue the work being undertaken by these activities. I believe that part of the solution may be found through the corporate sector.

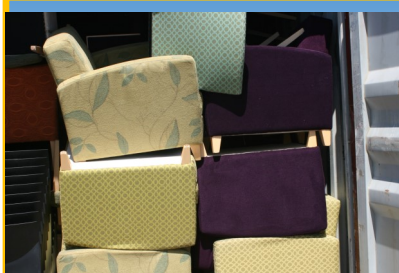
Funding

As always, Donations in Kind Northern Region is in desperate need of funds to cover the operational cost of running the store and the cost associated with the shipping of the containers of donations to the areas of need. Please give favourable consideration to Donations in Kind when dispersing the Club's funds throughout this Rotary year. Donations can be made online through the following link:

<https://donations.rawcs.com.au/Default.aspx?ProjectID=789&ReturnTo=4>

Correspondence has been entered into with Hospitals and Rotary Clubs in Cambodia and Tonga to determine their needs and the possibility of funding for containers from these countries. This has led to correspondence with the Australian High Commissioner in Tonga and the possibility of securing funding from his office.

An application is also being lodged with the Australian High Commissioner in PNG applying for a grant from his office to fund containers.



Looking for a Home!

Donations in Kind Northern Region has a number of as new single lounge chairs that are not suitable for sending overseas.

These chairs are available for a local recipient and any Rotary Club that is aware of a worthy local Community Group in need of these chairs should contact Donations in Kind Northern Region



Christmas Break!

The next rostered day for the packing of containers at Kingston is Saturday 7th December. This the last day before Christmas that the Donations in Kind Northern Region store will be open with volunteers in attendance.

Any planned deliveries should be made on or before this date. Any deliveries after this date should be coordinated by contacting the DIK Supervisor on 0466 556 042.

Donations in Kind Northern Region will be open for business after the break with volunteers in attendance starting on the second Thursday in 2020.

RAWCS Donations in Kind Northern Region takes this opportunity of sincerely thanking all of our volunteers, service providers and all of the Rotary Clubs throughout the five Rotary Districts of Northern Region for your ongoing support throughout the year.

***MERRY CHRISTMAS AND HAPPY NEW YEAR
TO EVERYONE***

QUALITY OF DONATIONS—NO WASTE PLEASE!!

Due to the introduction of the Waste Levy recently introduced by the Queensland Government, the cost of disposing of unusable donations can be expensive with the possibility of costing more than the actual cost of sending a container. We ask all donors to check the quality and appropriateness of the donation before sending it to Donations in Kind.

The General Rule is that IF YOU ARE NOT PREPARED TO USE THE ITEM YOURSELF, DON'T SEND IT

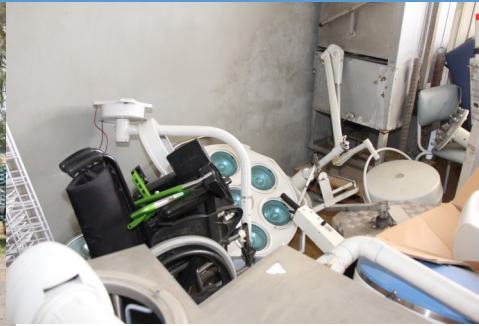
MEMORIES!!

As a lead up to the celebration of our 1,000th container to be consigned through RAWCS Donations in Kind Northern Region which be happening sometime in the near future, we will be including a series of photographs in a number of editions of this Newsletter to highlight the history and achievements of Donations in Kind in Northern Region over the years.

This is the last of a series of photographs and covers the period when Donations in Kind was operating out of the Wesley Mission owned premises in Freeman Road, Durack



750th Container Loaded by these Volunteers in February 2014



Medical Equipment Available from the Dalby General Hospital



Sample of the Large Number of Schools Desks and Chairs that Past Through the Durack Store



Forklift Donated by Dan Holzapfel, a Regular Volunteer and Great Supporter of Donations in Kind



Another Loading Day at Durack



A Well Earned Tea Break after Finishing Loading for the Day



Yet Another Loading Day



Loading of a Catheterization Laboratory bound for Mongolia



Volunteers from Adelaide, Melbourne, Sydney and Brisbane , representing Four RAWCS Regions Loaded the Catheterization Laboratory bound for Mongolia



Loading of a Container of Donated Equipment at the TAFE College at Ipswich before it was Closed



Inside the Durack Store



Inside the Durack Store