



Our Patron for Rotary Qld's
Centenary Project for the UQ
Queensland Brain Institute is
Prof Graeme Nimmo RFD.

Rotary Fellowships Month

Chartered 29th May 1923

Rotary International Club 17787

BULLETIN 24th JUNE 2024



OPENING: Dan Adler (left) opened the meeting 12.45pm, with 15 in attendance, including 5 guests (right): the guest speaker Warwick Willmott—Senior Geologist & Author, Het Shah, KH Low, Evelyn Lee, and Michael O'Flynn (no photo).



APOLOGIES: Angela Murphy, Miles Murphy, Winnie Chen, Celia Grenning, Phil Saxby, Dymphna Muir, Chris Muir, Bruce McNaught, Brian Kenny, James Delahunty, Juan Laporta.

ACKNOWLEDGEMENT of COUNTRY We acknowledge the Jagera and Turrbal people as the Traditional Custodians of Meanjin (Brisbane), the lands on which we meet. We pay our respects to elders past, present and emerging.

*Mitchell River,
Downstream from Falls,
Kimberley, WA*



TOAST to King Charles III and the People of Australia.



Rotary Fellowships are international groups that share a common passion. Being part of a fellowship is a fun way to make friends around the world, explore a hobby or profession, and enhance your Rotary experience. Rotary Fellowships began informally in 1928 when Rotarians with a shared interest in the language Esperanto joined together. In 1947, a group of Rotarian boating enthusiasts began flying the Rotary flag from their crafts, calling themselves the International Yachting Fellowship of Rotarians; this fellowship now boasts the longest continuous existence.



WHAT'S INSIDE

International Toast	Rotary Club of Taveuni, Fiji — Celia Grenning (in absentia)	Page 2
Rotary Information Spot	Peace Builder Clubs—Keith Watts	Page 3
President's Report	QBI Rotary Event, Presidents' Dinner, RC Hamilton Beer Festival	Page 4
Spot the Member	Bruce McNaught, QBI Jazz Night	Page 6
Member Spots	Keith Watts, Ed van Goethem, John Smerdon, Dan Adler	Page 8
Guest Speaker	Warwick Willmott—Senior Geologist and Author	Page 8
Meeting Dates, Roster		Page 16
Joker Raffle & Sergeant	Sergeant Michael—is he worried about Denise?	Page 16
Guest Speakers, Calendar Dates		Page 16



The Soft Coral Capital of the World.

The [Rotary Club of Taveuni](#) is a mighty force using a minimum of fuss.

One of the most effective Rotary clubs in the Southern Hemisphere, the club has few members.

It has raised millions of dollars to support all types of projects on the Garden Island of Taveuni.



The club plans to continue support for established programs such as the world famous '[Taveuni Eye Project](#)' and the **Scholarship Program** that supports 160 students across the island of Taveuni.

The club draws donations and subscriptions from individuals and other Rotary clubs from around the world.

Rotary Taveuni acknowledges the support of the [Rotary Club of Boronia](#) in Victoria, Australia, and of the Rotary [Foundation](#).

Taveuni Eye Project



304 cataract and pterygium surgeries were carried out free of charge to patients in 2019.

Funds for this project were provided by the Rotary Foundation, through District 9920, from donations from our sponsors shown on our sister website at rotaryeyesfiji.com and from private donations.

- ◇ Cataracts: 216.
- ◇ Pterygiums: 81.
- ◇ Others: 7.
- ◇ Total Operations: 304.

For many years the **Rotary Club of Taveuni** has been involved in a **Scholarship Program for needy students** in secondary schools across our island.

Each year students are interviewed by a committee of club members.

Scholarships are based on the following criteria:

- ◇ Grade reports from the previous year.
- ◇ Attendance at school.
- ◇ Teacher's and administrator's comments.
- ◇ Conduct at school.
- ◇ Financial needs of the family.

After assessment of these various points, scholarships are given in the form of a voucher with which only school supplies may be purchased. The voucher in 2020 is 250 FJD. While the Fiji government pays the school fees the scholarship pays for other required items that the student must have to attend school. This includes uniforms, sports or athletic clothes, sandals, book-bags, exercises books for each subject, pencils, pens and other supplies the student may need.

Grade reports are reviewed by the club committee and if the student maintains a 65 or higher grade the scholarship will be renewed for the next school year. As students graduate new students are accepted into the program.

This year we were able to provide 160 scholarships. This was up from 120 the previous year. This year 90 scholarships were given to returning students and we were able to provide 70 scholarships to new students.

As the number of students grows so does the need for scholarships. It is very difficult to turn away students who with a little help could gain an education and go on to become successful members of the community. This year we had to turn away 250 needy students. Many of these will not be able to continue their education.



- ◇ The definition of a Peacebuilder club is one that commits to engage in dialogues and projects that promote positive peace in both their communities and across the globe.
- ◇ A Rotarian movement creating energy and momentum for peaceful conflict resolution throughout the world.
- ◇ In 2018 the RAGFP leadership team decided to champion this program in Rotary clubs world wide.....

<https://rotaryactiongroupforpeace.org/how-to-become-an-active-peacebuilder-club>

WHAT IS PEACE?

Positive Peace is when we create communities where neighbours can thrive socially, emotionally, and economically.

Positive Peace is not simply a lack of conflict: It is the active effort to create equitable and resilient societies where people can reach their potential.

The Eight Pillars of Positive Peace are:

1. Low levels of corruption
2. Acceptance of the rights of others
3. Free flow of information
4. Sound business environment
5. High levels of human capital
6. Equitable distribution of resources
7. Good relations with neighbours
8. Well-functioning government.



PRESIDENT
Phil Saxby



Presidents' Dinner

DATE: Friday 28th June 2024

TIME: 6.30 for 7.00 pm

VENUE: Blackbird Bar and Grill, 123 Eagle Street, CBD

RSVP: Friday 14th June

COST: \$150 per person, drinks excluded

NETT PROCEEDS to the Rotary Foundation

DRESS: Coat and Tie—Evening Attire

All Club Members and Guests are Welcome

Guest Choice from **SELECTED MENU**

DIETARY REQUIREMENTS: Please email psaxby@ozemail.com.au

PARKING: [Available online at Wilsons Riverside, \\$7 night rate](#)

TICKETS: [Only Available Online](#)

Rotary
Club of Brisbane



2023-2024

President

Phil Saxby

2024-2025

President

Angela Murphy

PRESIDENT
Phil Saxby

Rotary 
District 9620

DG PAUL ROGER & DGE SUE MULRANEY
INVITE YOU TO JOIN THEM IN CELEBRATING THE

*District 9620
Annual
Changeover*

 **CREATE HOPE
in the WORLD**  **THE MAGIC
OF ROTARY**

Sunday 30.06.24
From 12-3pm (Registration from 11am)
Club Noir
3994 Pacific Hwy, Loganholme

TICKETS \$65
2-COURSE LUNCH INCLUDED (CASH BAR AVAILABLE)

RSVP/BOOK ONLINE BY COB 19TH JUNE
DRESS: DRESSY CASUAL (PLEASE NO DENIM)

BOOK NOW::
[HTTPS://EVENTS.HUMANITIX.COM/
ROTARY9620-CHANGEOVER-2024](https://events.humanitix.com/rotary9620-changeover-2024)





 **ROTARY CLUB OF HAMILTON • BRISBANE** 

CRAFT BEER FESTIVAL

TICKETS \$25
(INCLUDE GLASS AND 1ST DRINK)

SATURDAY 27TH JULY 2024, 12-5PM
ST AUGUSTINE'S HALL, 56 RACECOURSE ROAD

SUPPORTING LOCAL CHARITIES

LOW & SLOW BBQ & SAUSAGE SIZZLE
EXPERT TASTING INTRODUCTION
30+ CRAFT BEERS

LIVE MUSIC
WWW.HAMILTONFESTIVAL.BEER

PLUS MORE BREWERIES!
PLUS MORE BREWERIES!

SPOT THE MEMBER

ENTER YOUR OWN PHOTOGRAPH TO HIGHLIGHT MEMBER ROTARY ACTIVITIES
ALSO ACCEPTING PHOTOGRAPHIC MEETING APOLOGIES FROM ANY ABSENT MEMBERS



Bruce McNaught: Cheryl and I had a wonderful week staying with Chris Rutter in Prestwick.

Chris made us wonderfully welcome and sends her love to the club and Angela with best wishes for her presidency.

I was asked to be the guest speaker at **RC Prestwick** on Thursday and I spoke on Polio.

It was a delightful meeting and Cheryl and I were made very welcome.

I attended the meeting of RC Wilmslow 2 weeks ago and will attend their change over this Wednesday.

From Left: Cheryl, Chris Rutter (RC Prestwick), and Bruce.



SPOT THE MEMBER

QBI JAZZ EVENING



MEMBER SPOTS



Keith Watts Provided a brief update on Mario Pennisi's funeral..



Ed van Goethem provided the club with an update on Help Industries. It is planned for the CEO of Help Industries to visit the club on August 19th.



John Smerdon reported that the \$100,000 donation to QBI is on track to be made from the PAF in the coming weeks. There have been a number of smaller grants made, each in the order of \$5,000.



Dan Adler spoke about the CEO sleepout (GOATS) held at the Botanical Gardens that he participated in. This year GOATS raised \$500,000 locally, which was donated to St Vinnies, \$1.8 million was raised in Queensland, and \$8 million was raised nationally.

GUEST SPEAKER— Warwick Willmott—Senior Geologist & Author



Warwick Willmott is a geologist who has worked with the geological survey of Queensland in a variety of fields.

Viewing the world through a geological lens can be difficult given the millions of years involved. However, it can help make sense of the landscape in which we live and geological processes, like erosion, that we see occurring around us today. We are lucky to have a series of books that describe the geological processes that have created the landscapes of SEQ.

All of these books are edited by Warwick Willmott.

These books not only explain the 'recent' volcanic activity (18-27 mya) that formed the Great Eastern Ranges and our rich basalt soils, but also the complex geological processes that formed the Australian continent. Explanations are reinforced with diagrams to show processes like subduction.

In addition to explaining geological processes, these books cover soil formation and types from the black cracking clay soils of the Darling Downs to the shales and sandstones around Withcott. These books make sense of why some soils are more prone to erosion and landslips. Groundwater systems are also discussed, explaining how aquifers are formed and recharged.

One of the best things about these books is their local relevance. These books are a field guide to the landscapes of SEQ. Extensive referencing of local landforms make up the bulk of these books. Specific directions to geological features are provided using roads, creeks and mountains as landmarks to help navigate the reader to locations. One could easily plan a day out to look at the Toowoomba lava pools, the Helidon natural springs, the fossil rich shales of Ipswich, the Aspley mudsprings, the Helidon sandstone buildings in the Brisbane CBD, ending with a cup of tea overlooking the volcanic plugs of the Glasshouse Mountains.

Warwick made a presentation to the club and has kindly made it available for publication in this newsletter.

Right: Warwick Willmott presenting alongside guest, Michael O'Flynn.





Are there any?

- or have we humans got everything under our control?

Not so at all –

- even in quiet old Brisbane there are some important background constraints and controls

Thus we all need to know something about the rocks of the city

It isn't just academic

It can have many practical applications

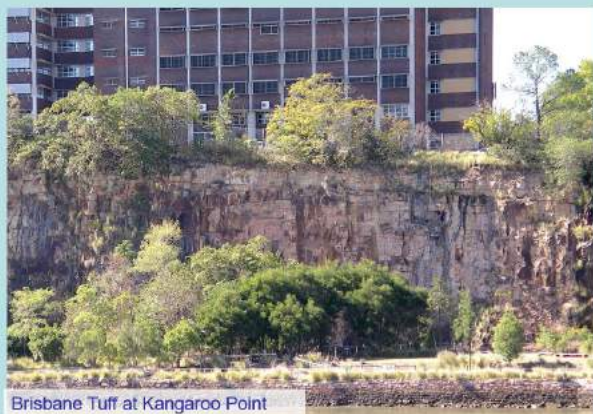
Geology is needed to design foundations for buildings and for tunneling -



e.g.
these
rocks are
much
softer -

Soft sedimentary rocks at Cliveden Street Corinda.

- than these



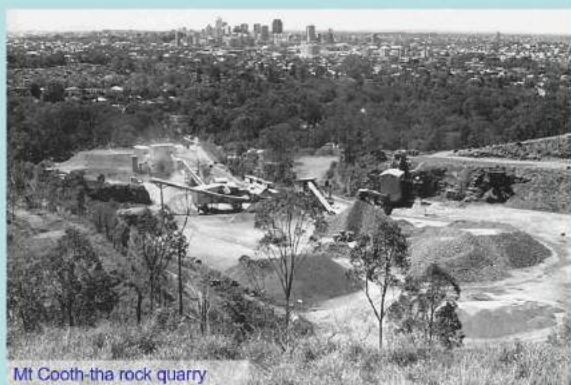
Brisbane Tuff at Kangaroo Point

Geology is also needed to predict any unstable land -



Land at Oxley where landslips have destroyed houses

- and to locate new deposits of raw materials for construction



Mt Cooth-tha rock quarry

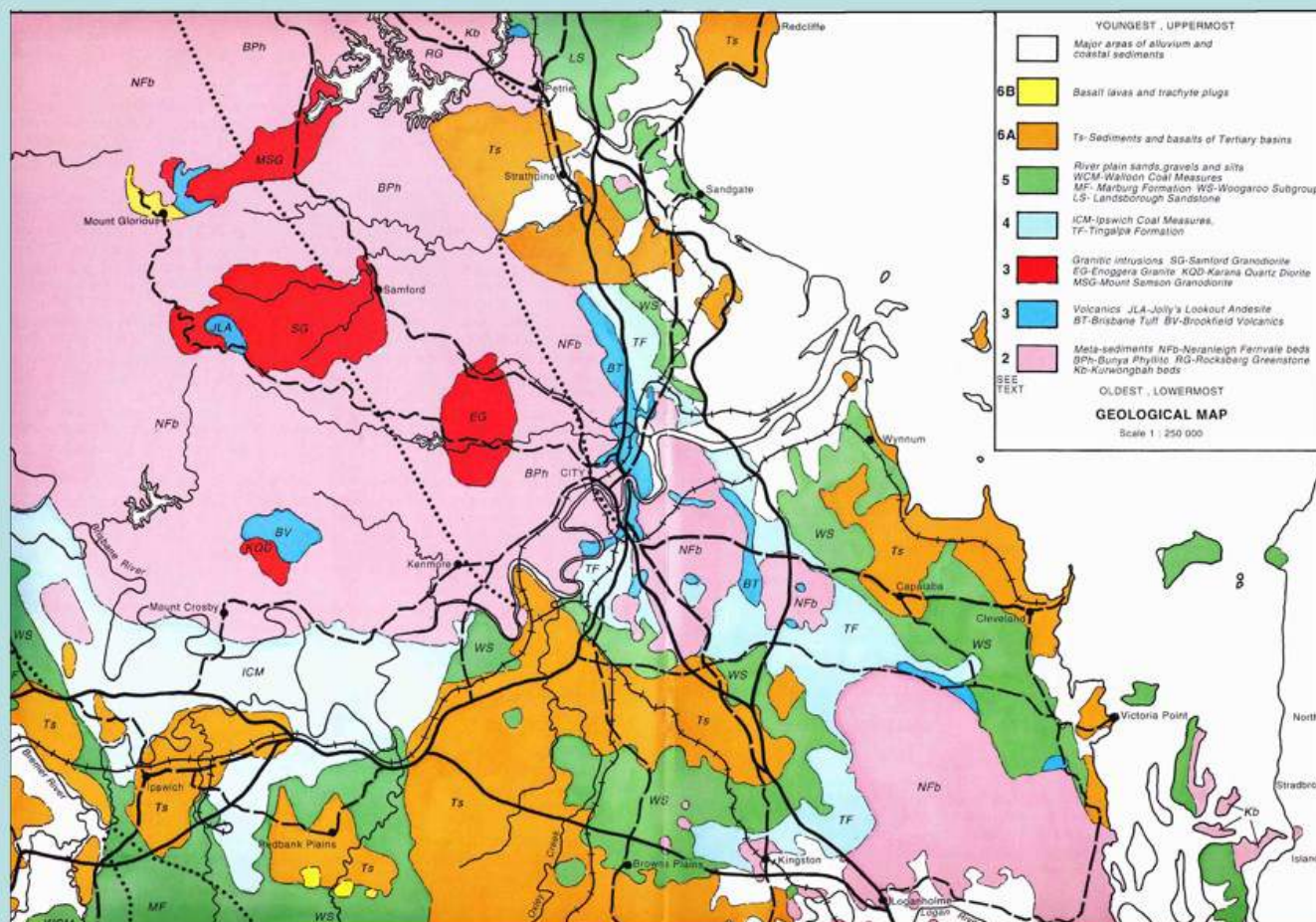
Mapping of rocks

Geologists record rocks in groups, which have similar origins, ages and compositions

The groups are given formal names so they can be easily referred to

Shown in different colours on geological maps

The main rock groups of Brisbane



The pattern is quite complex –

Today we won't have time to look at all the details –

but we will look at some questions to start our thought processes going

Q1. Why is Brisbane so hilly?



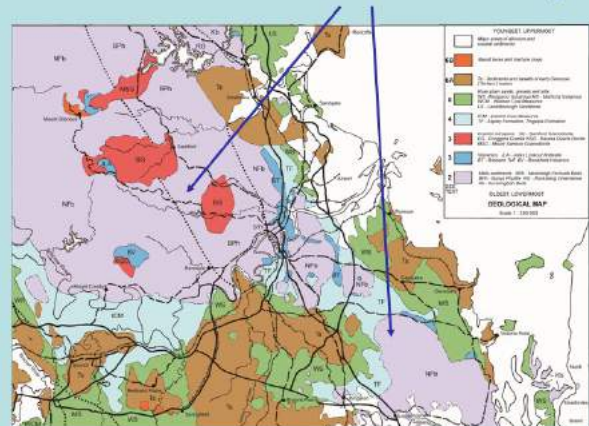
GUEST SPEAKER— Warwick Willmott—Senior Geologist & Author

Southeastern and northwestern suburbs are situated on old sedimentary rocks, that have been compressed, hardened and stood on end



They are resistant to erosion and tend to form NNW- trending ridges and valleys

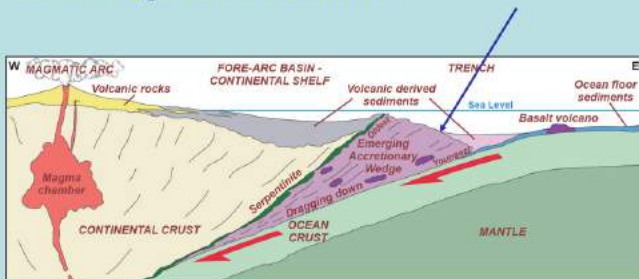
Present extent of hardened sedimentary rocks



These are the oldest rocks in SE Qld

Formed in the Devonian and Carboniferous periods, about 370 to 310 million years ago

Originally sediments deposited in deep trench off the edge of the continent



Called the *Neranleigh Fernvale Beds* and the *Bunya Phyllite*

Composed of argillite, greywacke, quartzite and phyllite

Quartzite particularly hard, formed by consolidated siliceous skeletons of microscopic *radiolaria*



Resistant bands of quartzite give the peaks of Mt Gravatt, Pine Mtn, Whites Hill, Mt Petrie, Mt Cotton etc



Fortunately these rocks are easy to excavate – and give stable slopes –

and are a good source of concrete and road aggregate around Beenleigh and the Gold Coast



GUEST SPEAKER— Warwick Willmott—Senior Geologist & Author

Q2. What are the hard rocks at Kangaroo Point and some northern suburbs?



This is the *Brisbane Tuff*
-also known as the Brisbane Porphyry

This is the signature stone of Brisbane



Fragments in the welded tuff of the Brisbane Tuff



St Stephens Cathedral, Elizabeth Street, City

Used widely as a dimension stone in older buildings

Unique variations in colour



Also was a source of construction and aggregate stone, from the early days of settlement, to the 1970s

Quarries at Kangaroo Point, Spring Hill, Lutwyche, Stafford and Chermside

Unfortunately all sources are now urbanised and exhausted

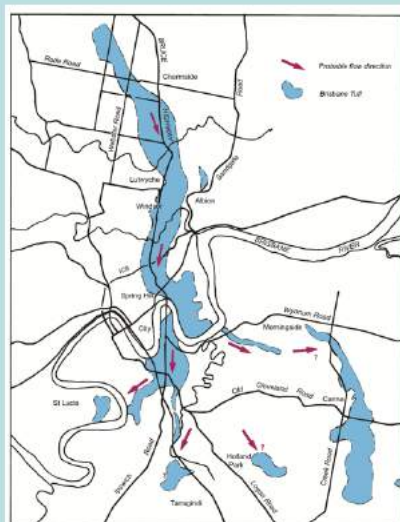
BCC Stafford Quarry, 1946



How did the tuff happen?

About 225 million years ago, hot debris from a gigantic volcanic eruption to the north, rapidly flowed southwards down narrow valleys

Then 'welded' together again under its own heat to a hard rock



The explosion of Mt St Helens in the US, relatively small in comparison to the Brisbane Tuff

GUEST SPEAKER— Warwick Willmott—Senior Geologist & Author

Similar volcanic debris cooling in the Valley of Ten Thousand Smokes in Alaska 1910
(however this was not thick or hot enough to weld together afterwards)



Can be difficult to excavate – needs investigation

Excavating Clem Jones Tunnel beneath Kangaroo Point



Otherwise costly surprises can happen -



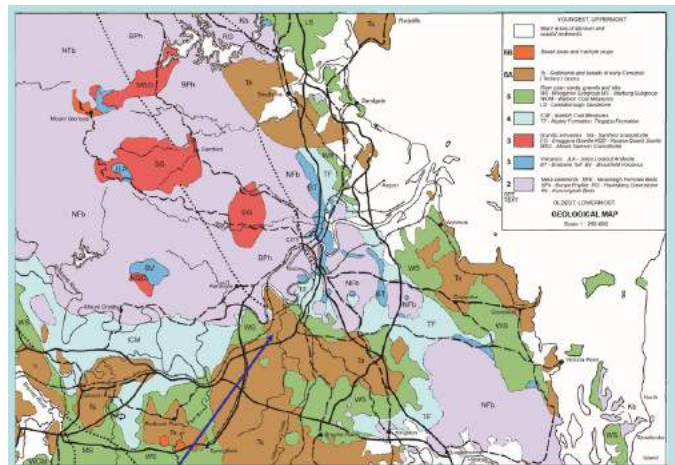
Q3. Why are there landslides at Oxley?



Underlain by relatively soft rocks – the *Corinda Formation*.

Deposited in ancient lakes 65 – 55 million years ago

These usually give flat terrain, but at Oxley there are some steeper slopes



Corinda Formation

GUEST SPEAKER— Warwick Willmott—Senior Geologist & Author

Groundwater in the rocks exits in springs on the steep slopes and softens the rocks and soil there.

In wet episodes the pressure of the water can cause the whole side of the slope to fail



Slide at Blackheath Road Oxley 1983. House destroyed

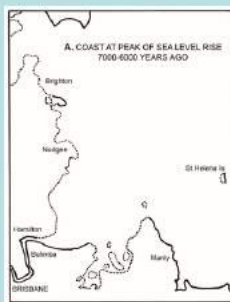
Q4. What has happened out in Moreton Bay?



During the last Ice Age, Moreton Bay was dry land

Then after about 10 000 years ago, the ice melted and sea levels rose

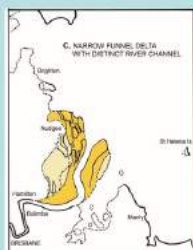
The resulting coast line established about 7000-6000 years ago was further inland than at present



Former coast just east of Hamilton



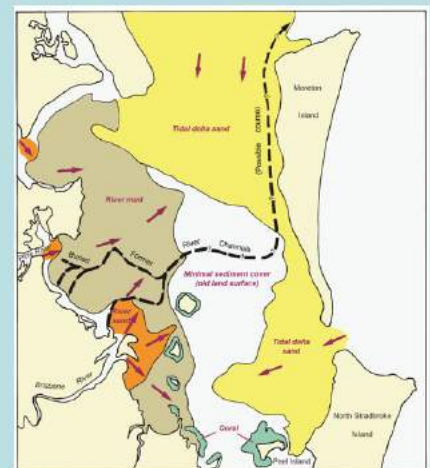
The Brisbane River progressively built out the coast around its mouth



Interlayered river gravel, sand, silt and estuarine mud

Need investigation for any major construction

Moreton Bay at present



GUEST SPEAKER— Warwick Willmott—Senior Geologist & Author

Q5. Why do we have such a problem with the river?

Rivers and their floodplains are inseparable units.

Flood plains are there for a reason

We have forgotten - build on the flood plain, and the river will get angry and come visiting.

Sooner or later



Denise Schellbach presenting Warwick Willmott the club's Certificate of Appreciation.



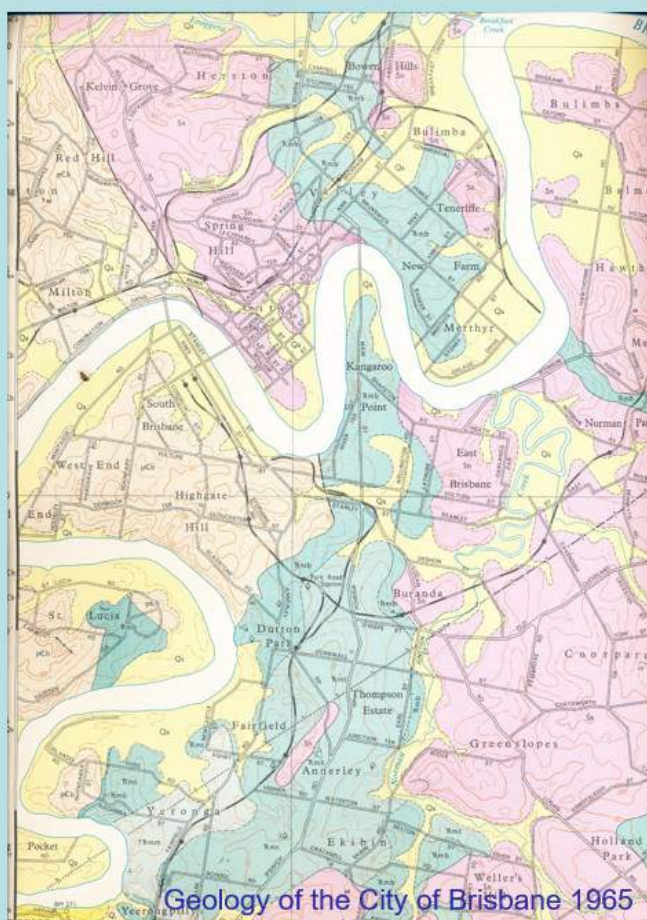
A sixty year-old map from 1965 shows the river's flood plain in yellow.

A pretty good indication of floodable areas

We should have known

Vested interests told us that Somerset, then Wivenhoe dams had changed everything, and would protect us

Not so. Avoid the flood plains



An interesting fact.

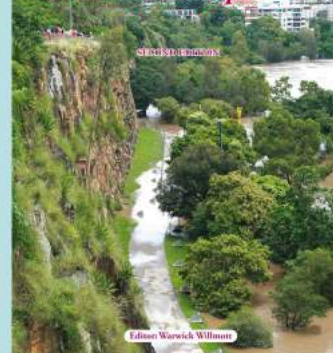
The Brisbane River appears to be a very ancient stream, dating back possibly even 200 million years, when a stream was present between the D'Aguilar Range and the southeastern hills.

Its twisted course is typical of a stream established on a broad low-gradient flood plain.

That no longer exists, and it appears that the river has eroded downwards to become entrenched in the rocks beneath

Further reading

Rocks and Landscapes of Brisbane and Ipswich



RAFFLE & SERGEANT



JOKER RAFFLE The raffle was drawn by Guest Speaker Warwick Willmott and won by Keith Watts. Keith did not draw a joker and lost. Keith was heard to complain about a raffle that couldn't be rigged electrically. He has gone off to create an electronic raffle!



SERGEANT Michael Stephens left before fines were imposed today. The fear of being hurt by another gavel throwing by Denise was seared into his memory from the previous week!



MEETING CLOSED Dan Adler closed the meeting at 1.45 pm.

NATIONAL ANTHEM

MEETING DATES

JULY	Mon 1	12.15 pm	Changeover Meeting at Fridays
	Mon 8	11.30 am	QBI Meeting at Fridays
	Mon 8	12.15 pm	Meeting at Fridays
	Mon 15	12.15 pm	Meeting at Fridays
	Mon 22	11.30 pm	Board Meeting at Friday's Riverside
	Mon 22	12.15 pm	Meeting at Fridays
	Mon 29	12.15 pm	Meeting at Fridays

MEETING ROSTER

If you are not available for a rostered duty, please either advise the President, or arrange a replacement.

DATE	PRESIDENTIAL DUTY	CHAIR	INTERNATIONAL TOAST	ROTARY INFO SPOT
JULY	TBA			

GUEST SPEAKERS

JULY	Mon 8	Susan da Silva	New Zealand's Treaty of Waitang
	Mon 15	Sio Tusa	Youth Crime Reduction Programs

CALENDAR DATES

JUNE	Fri 28	6.30 pm	Presidents' Dinner	Dinner Parking	Blackbird Bar & Grill, Riverside, 123 Eagle St.
	Sun 30	12.00 pm	District 9620 Annual Changeover		Club Noir, 3994 Pacific Hwy, Loganholme. Bookings
JULY	Mon 1	12.15 pm	Changeover Meeting		Fridays
	Sat 25	12.00 pm	RC of Hamilton Craft Beer Festival		56 Racecourse Rd, Ascot. Bookings Required

CONTAINERS FOR CHANGE

CONTAINERS FOR CHANGE: LOG IN and DELIVER YOUR EMPTIES TOWARDS FUNDING OUR CLUB ACTIVITIES

https://member.containersforchange.com.au/team-member/add/qld?team_link=qld/the-rotary-club-of-brisbane-inc-6420eda5a5afb



**CREATE HOPE
in the WORLD**

[2025 Rotary International Convention](#)

21-25 JUNE 2025—CALGARY, CANADA

Rotary
Rotary Club of Brisbane
District 9620

