

## Rotary Club playground harvest instructions.



*Thank you for becoming a RORP Partner and helping save a playground for donation to children overseas. Please ring one of the contacts at the bottom of this form if you need more information. The following process has now been varied as the Rotary Clubs and Councils joining RORP continue to expand. It is important to connect with the donor (usually a school or council), the contractor and RORP Central at the earliest possible opportunity to coordinate an appropriate plan for harvest.*

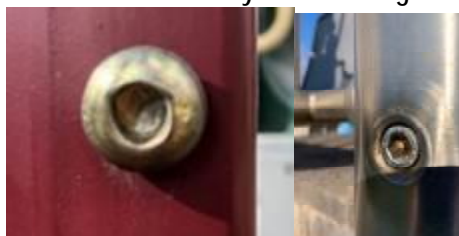
Have you thought of hunting more playground from your club's region? Someone in your club could contact the local municipalities, the local schools, kindergartens, pubs or other organisations. It is almost certain that playgrounds will be removed in your area this year and end up as refuse without your intervention. We can help you negotiate its donation.

### Step 1: Release of the playground

- After a potential playground near your club has been identified and your club has agreed to participate, the RORP Team will complete the arrangements with the donating body.
- This includes billing that body the \$600-750 plus gst that covers the shipping cost, and, issuing the legal indemnity documentation. No cost to your club.

### Step 2: Playground Survey and Photographs

- We would like your club's designated project leader to check the playground to ensure that it is suitable. We need playgrounds that are mainly metal with the components bolted together. Would you let a young child use this playground?
- The RORP team will develop detailed plans of the playground from the comprehensive photos you send us of the playground one month before harvest date. These plans, with codes, will be returned to you before harvest date for your team to add in *bold* permanent marker pen. See separate document titled: *RORP Guide to taking photos of Playgrounds.*
- If your club has to partially dismantle the playground components from their uprights, check what bolts are used in the playground. They will be vandal proof and the two main types are shown in the photos. You will need to purchase a special set of spanners from Bunnings if a club member does not have them. The RORP Team have a set that can be borrowed. You will also need to purchase a can of *Penetrine* and a can of *WD40*. A small Bunsen is also handy to loosen tight bolts. Allow \$50 to purchase if needed.




- Have you thought of seeking the help of another community group? The Men's Shed, Parent's group, car club with all of their mechanical knowledge? This allows a small Rotary club to be very visible in the community. Inspire don't perspire.

### Step 3: Meet the

- Best done on site to sort the when, what, how, why, who questions. The

|                                       |   |
|---------------------------------------|---|
| party responsible for the extraction. | <p>RORP Team have found that all concerned want to see the playground not go to the tip and are very accommodating and committed. The playground needs to be removed intact and the option of cutting the legs off at ground level is not workable.</p> <ul style="list-style-type: none"> <li>• If the site is to become a fenced-off construction site you probably will not be allowed access. In this case your work needs to be completed before this date.</li> <li>• Use the opportunity to get the media involved – it is a good story or Rotary at Work.</li> </ul>  |
| Step 4: Coding the playground         | <ul style="list-style-type: none"> <li>• The codes mean that the playgrounds can be accurately reassembled by Rotary volunteers overseas. All of the details/plans/photos/contacts for each playground are stored in an on-line file maintained by the RORP Team. The overseas Rotary organisations have access to these files and can reassemble like a LEGGO set.</li> <li>• The coding is required as even two apparently identical components are different due to the bolt holes being drilled on site when the playground was originally installed.</li> <li>• Separate detailed advice on how to complete the coding along with a copy of the coded plans will be available to you via an online link that will be sent to you by the RORP Team. This document is <i>RORP Playground Labelling</i>.</li> <li>• Access to a colour printer is required – preferably A3</li> <li>• Coding the playground best done in pairs, a single pair will need over an hour on site with a couple of different coloured permanent marker pens (not water based).</li> </ul>  |
| Paint Spot                            | <p>The playgrounds will eventually be loaded into a container so as to best utilise the available space. To assist quick sorting the playgrounds when they are removed from the container (has to be completed in a couple of days) we ask that you add a paint <b>spot</b> to each part (a cheap spray can best option). Please coordinate the colour choice with Sam Nicol to avoid duplication in a shipped container. OR use a piece of coloured <b>tape</b>.</p>   |
| Step 5: Dismantling the playground    | <ul style="list-style-type: none"> <li>• If your club is undertaking the dismantling, you will probably need 6 to 8 people and a couple of hours. At least a couple of mechanically experienced people to handle tricky bits. It helps if <i>WD40</i> and or <i>Penetrene</i> has been applied assiduously a couple of times over the previous week or so. It helps on these occasions to try to “wiggle” a bolt with the spanner as it allows the lubricant to work its way in. It also identifies ‘difficult’ bolts. Don’t force them at this stage as once the bolt has been damaged the only option might be to cut it with an angle grinder and this creates problems for the reassembly team overseas. Hints to free difficult bolts: <ul style="list-style-type: none"> <li>• Hit the end with a hammer to jar the thread free.</li> <li>• Use a non-water soluble penetrating agent rather than the WD40.</li> <li>• Ask the contractor if they have a method.</li> <li>• Use a disposable propane heat gun (from Bunnings - cheap)</li> <li>• In the end, it has to be removed with the least damage possible. We will endeavour to repair and supply replacement bolt and nut.</li> </ul> </li> <li>• Some cordless electric screw-drivers or hammer/drill make life easier and a cordless angle grinder on standby for an impossible bolt is good insurance.</li> <li>• Talk to contractor where to store the components you disassemble, eg roof, slide, bridge so that there is access for a Backhoe to lift out the uprights before adding them to your stock pile ready for collection.</li> </ul> |

|   |   |  |  |
|---|---|--|--|
|   | <ul style="list-style-type: none"> <li>Plan a contingency in case of wet weather.</li> <li>If it is the contractor disassembling the components talk to them about the bolts and nuts that are removed. <u>Please place all bolts/nuts into a suitably marked container (Previously we requested that the bolts were screwed back but experience shows they get caught and bent when loading/unloading).</u> Remember up to nine playgrounds will be packed into a single 40ft container in the most space -efficient manner.</li> </ul>  |  |  |
| Playground Damage   | <p>Some damage will possibly occur during the extraction process. The less the better. The damage is likely to be a bolt that had to be cut of an upright that was damaged. <u>Please mark damage on the plans so that we can locate.</u><br/>We will endeavour to fix these at DIK before shipping as the facilities to do this at the overseas destination are limited.</p>   |  |  |
| Step 6: Transport to Donations in Kind (DIK).   | <ul style="list-style-type: none"> <li>DIK Has two trucks and these can be booked by your club for use on any day except Tues and Thurs. Ring DIK to book well in advance.</li> <li>The trucks only require a normal driver's licence and there is no charge other than refilling the tank.</li> <li>Most harvested playgrounds can be moved on a normal tandem trailer.</li> <li>It is good to have a small team at the point of collection and at DIK to load/unload.</li> <li>The playground components are normally easily moved and loaded/unloaded by two people, two more because of their awkwardness rather than their weight.</li> <li>Factory 39, 400 Sommerville Road, West Footscray.</li> </ul> |  |  |
| RORP CONTACT DETAILS  | General enquires:<br>Peter Cribb  | 0410548543   | <a href="mailto:ptcribb@gmail.com">ptcribb@gmail.com</a>                 |
|   | Operations:<br>Shradd Sharma  | 0433244800   | <a href="mailto:shraddhasharmaa@gmail.com">shraddhasharmaa@gmail.com</a> |
|   | Plans:<br>Lyn Borghourts  | 0410438 061  | <a href="mailto:borlyn@tpg.com.au">borlyn@tpg.com.au</a>                 |
|   | Data Base:<br>Sam Nicol   | 0487334068   | <a href="mailto:captan@netspace.net.au">captan@netspace.net.au</a>       |
|   | Communications:<br>David Balshaw  | 0408532305   | <a href="mailto:davidbalshaw@gmail.com">davidbalshaw@gmail.com</a>       |
|   | Accounts & Indemnity:<br>Lesley McCarthy  | 0417 532 259   | <a href="mailto:lillico2009@gmail.com">lillico2009@gmail.com</a>         |
| <p><u>This is one of four (4) RORP playground harvesting documents</u></p> <ul style="list-style-type: none"> <li>RORP: Club playground harvest instructions.</li> <li>RORP: Donor playground harvest instructions</li> <li>RORP: Playground labelling.</li> <li>RORP: Guide to taking playground photos</li> </ul> <p>Documents available from <a href="https://rotaryflemington.org.au/sitepage/rotary-overseas-recycled-playgrounds-1/welcome">https://rotaryflemington.org.au/sitepage/rotary-overseas-recycled-playgrounds-1/welcome</a></p> |   |  |  |
| <p><i>As a RORP Partner Club we invite you to add this logo onto your club website</i></p>  |   |  <p><b>RORP</b><br/>Rotary Overseas<br/>Recycled<br/>Playgrounds<br/>Program Partner</p> |  |