



Short description of Värmdö Skärgård RC and it's wetland project

Värmdö Skärgård RC has, for more than five years, worked with a project named "Save the Baltic Sea". This is done in cooperation with 19 Rotary districts, 11 000 clubs and 40 000 members in eight countries around the Baltic Sea. This network is called BASRAN, Baltic Sea Regional Action Network of Rotarians.

Our aim is to inform about the situation in the Baltic Sea, as well as, together with partners, arrange local activities in order to contribute to a better environment in and around our beloved sea. This is a long-term project.

Our club also works with local partners to arrange activities and do projects that will have a positive impact on the Baltic Sea. In cooperation with the county administrative board, the municipality, the angler's association as well as the bird watcher's association, we intend to build wetlands on the island of Värmdö in the Stockholm archipelago. Together we have identified several possible sites for wetlands.

Our club, with its extended network, has acted as "door-opener" to local landowners on Värmdö. Our municipality owns very little land on Värmdö, and private landowners have to agree to build wetlands on their lands.

Our international partner for the project is district 1410 in Finland, where Anita Hägglund from Godby RC at Åland is the team leader.

The project aims to reduce the eutrophication of the island's surrounding waters and the Baltic Sea as a whole. This problem has gradually increased since the mid-20th century, largely due to excessive use of fertilizers in agriculture and the draining of farmland, which caused a lot of the nutrients to enter the sea. This situation has improved today, but it takes a long time to reverse the situation, and public efforts are currently insufficient.

The first wetland that the project intends to undertake is located on land owned by Värmdö parish (church). On September 9, 2025, the council of the parish decided to establish the proposed wetland. A prerequisite for this decision was that Rotary finances the construction of the wetland. The project will be carried out in collaboration between Rotary and Värmdö parish. The parish has committed to maintaining the wetland in good shape.

The plan for this wetland has been developed by a wetlands expert, Sören Eriksson, who will follow the project "from start to end". A local contractor will carry out all excavation work and clearing of forest and bush.



To present the wetland to the public, a walking path through the wetland is planned, with signs describing the wetland and its positive impact on both the Baltic Sea and the biodiversity.

The project also aims to raise awareness about the value of wetlands and contribute to the establishment or restoration of several such areas across Värmdö. This will have positive effects both on the island (increased biodiversity and water purification) and on the surrounding waters. This means that the entire population of the municipality will benefit from wetland projects.

Wetlands help to improve water quality (reduce eutrophication), strengthen biodiversity, and contribute to climate adaptation. If wetlands are selected with care and do not conflict with agricultural interests (which is entirely possible), the projects will have no negative consequences.

In short, the operations will be excavation of five ponds, with the material levelled around the ponds and clearing of trees in the area. Construction of a walking path around the wetland with signs explaining its purpose as well as paying for the construction management will also be included in the budget.

Our Rotary club, in cooperation with Värmdö parish, will promote the wetland already from the start. The municipality will be involved as much as possible and ways to encourage schools to visit the wetland will be discussed. Värmdö parish has accepted to maintain the wetland in good condition.

The budget for our project is 62 800 USD, equal to around 560 000 SEK. Co-funding by the Swedish Rotary Districts D2405, D2355, D2365, D2395 and by D1410 (Åland/Finland – the international partner), D1420 (in Finland/Estonia), D1462 (Lithuania), D1461 och D1470 (in Denmark), D1880, D1890, D1940 and RC of Stralsund (in Germany), D2231 (in Poland), and The Rotary Foundation (TRF).

On the next pages you find a map showing the project location and a description of the planned wetland with the ponds marked.

November 2025 (edited in March 2026)

Sven Rudberg

Project manager

Follow the timeline of our project and review project documents

<https://varmdoskargard.se/page/wetland>



Location of wetland project Kyrkviken





Wetlands Värmdö church
Sören Eriksson
Sören Eriksson Naturvård AB
0707-462588
20251120
Altitude RH 2000
Sweref 99 TM.

Technical data

4-5 separate ponds, with varied waterdepth and purpose.
Ponds are created by excavating 0,5- 1,0 m thick layer.
Surplus soil are placed next to the ponds,

Pond 1 and 2 gets an increased waterlevel.
Waterlevel in the others follow the waterlevel in the sea downstream

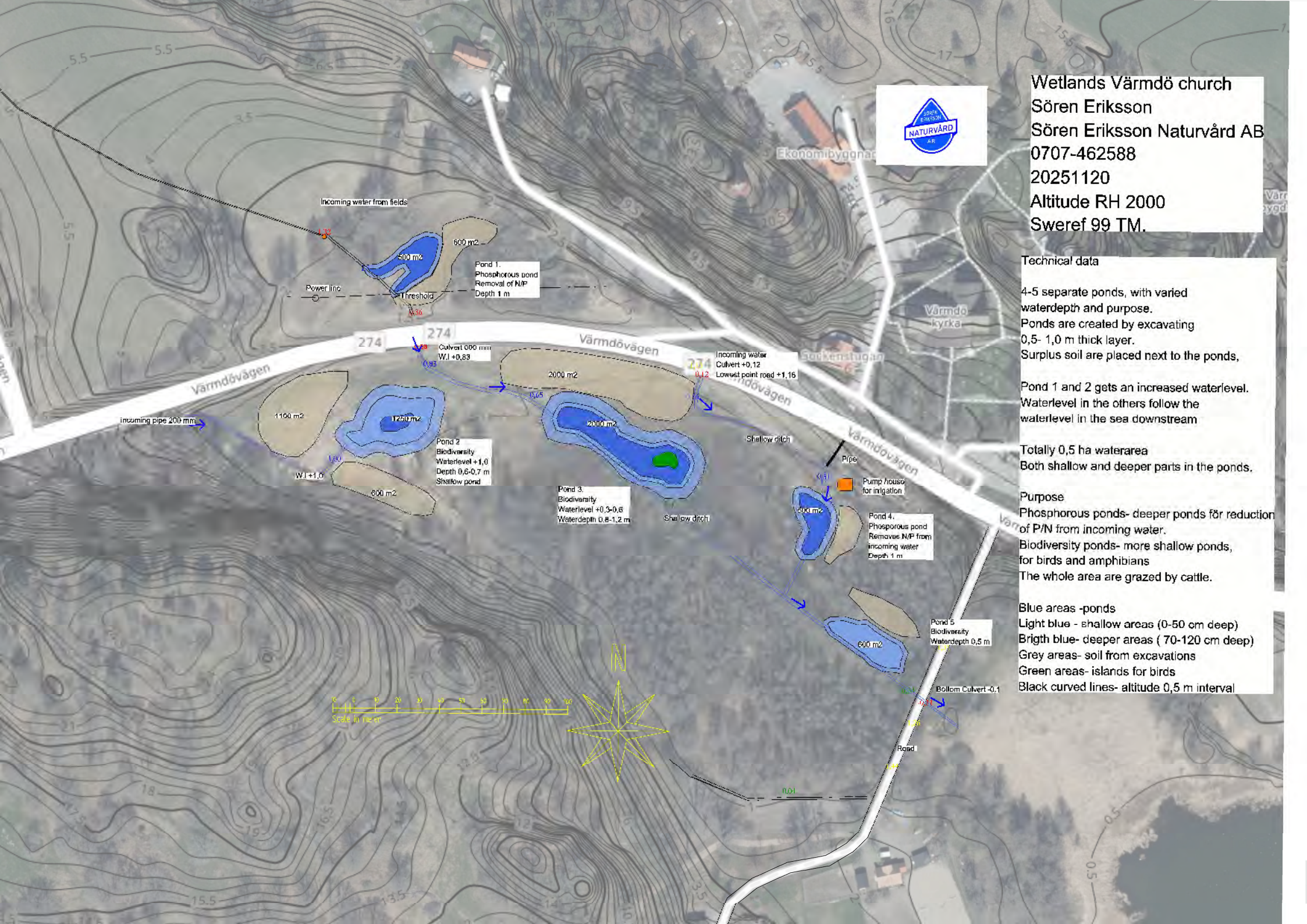
Totally 0,5 ha waterarea
Both shallow and deeper parts in the ponds.

Purpose

Phosphorous ponds- deeper ponds för reduction of P/N from incoming water.
Biodiversity ponds- more shallow ponds, for birds and amphibians
The whole area are grazed by cattle.

Blue areas -ponds

Light blue - shallow areas (0-50 cm deep)
Brigh blue- deeper areas (70-120 cm deep)
Grey areas- soil from excavations
Green areas- islands for birds
Black curved lines- altitude 0,5 m interval



Incoming water from fields

Power line

Pond 1.
Phosphorous pond
Removal of N/P
Depth 1 m

Culvert 1000 mm
WJ +0,83

Incoming water
Culvert +0,12
Lowest point road +1,16

incoming pipe 200 mm

WJ +1,0

Pond 2
Biodiversity
Waterlevel +1,0
Depth 0,6-0,7 m
Shallow pond

Pond 3.
Biodiversity
Waterlevel +0,3-0,6
Waterdepth 0,8-1,2 m

Shallow ditch

Pipe

Pump house
for irrigation

Pond 4.
Phosphorous pond
Removes N/P from
incoming water
Depth 1 m

Pond 5
Biodiversity
Waterdepth 0,5 m

Bottom Culvert -0,1

