

Rotary

District 5040







Vancouver

- A coastal seaport city and the most populous city in British Columbia. The population is close to 2.5 million with a diverse culture where 52% of the residents do not have English as a first language.
- Vancouver is consistently named as one of the top five worldwide cities for livability and quality of life.
- Vancouver's scenic location makes it a major tourist destination.
- Many visit to see the city's gardens, Stanley Park, Queen Elizabeth Park, VanDusen Botanical Garden, and the mountains, ocean, forest and parklands which surround the city.
- Each year over a million people pass through Vancouver on cruise ship vacations, often bound for Alaska.



Richmond

- Richmond, the site of Vancouver International Airport and known for its Asian influences.
- Home of the International Buddhist Temple, an elaborate complex resembling Beijing's Forbidden City.
- Asian eateries and shops cluster in the Golden Village district.
- Steveston village is part of the City of Richmond, a historical salmon canning center at the mouth of the Fraser River. You can fish off the docks, eat in wonderful seaside restaurants and walk on the boardwalk .



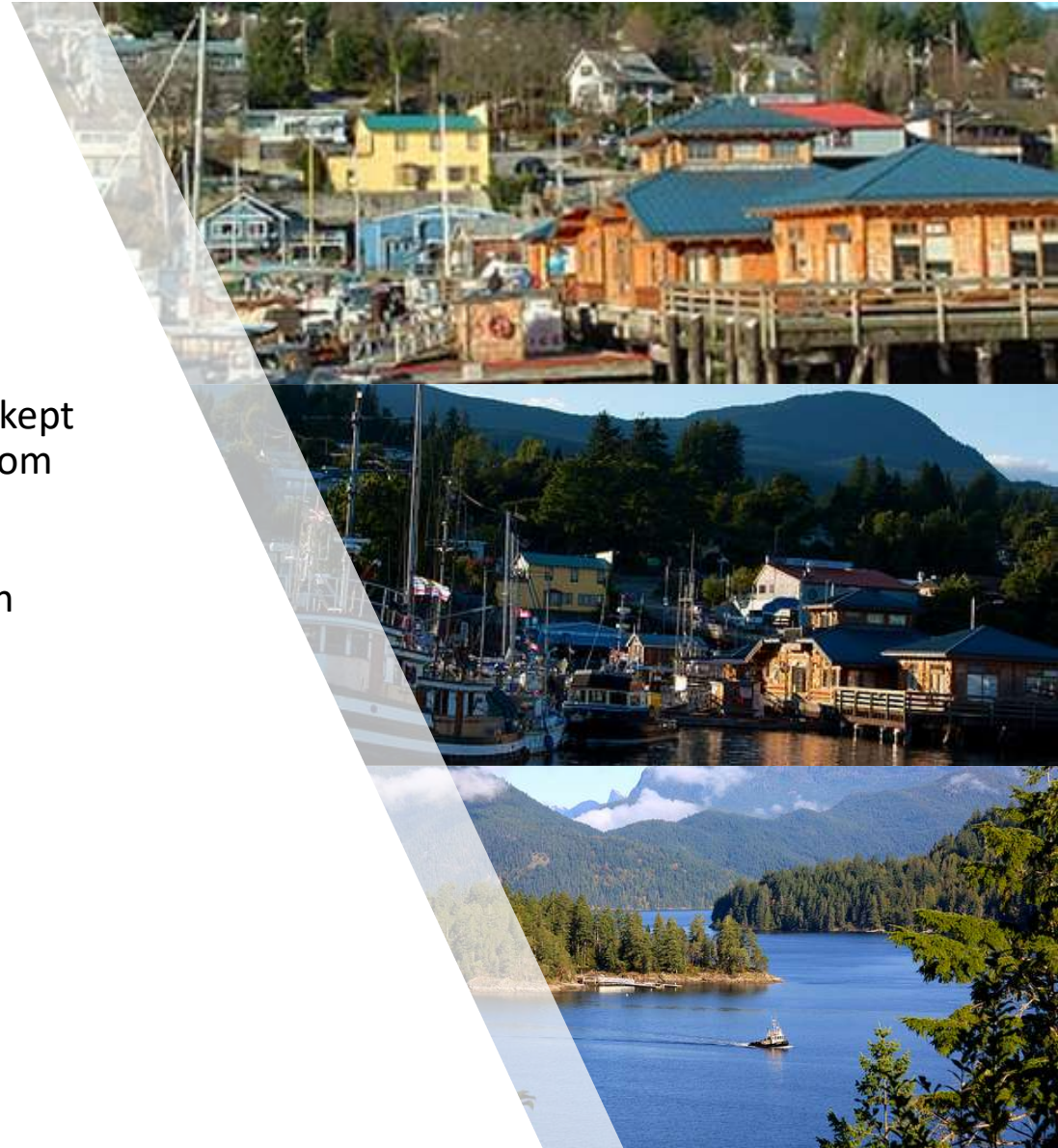
Whistler

- A year round resort.
- Home to Whistler Blackcomb, one of the largest ski resorts in North America.
- Besides skiing and snowboarding, the area offers snowshoeing, tobogganing and ski jumping at the Olympic Park, a venue for the 2010 Vancouver Winter Olympics.
- The hub of Whistler is a compact, chalet-style pedestrian village with wonderful restaurants,
- Summer activities include hiking, golf, gondola rides, bike trails.



Sunshine Coast

- The Sunshine Coast is British Columbia's best kept secret, stretching along 180km/112mi of land from Gibson's to Lund and Powell River
- With many quaint, tiny coastal communities in between.



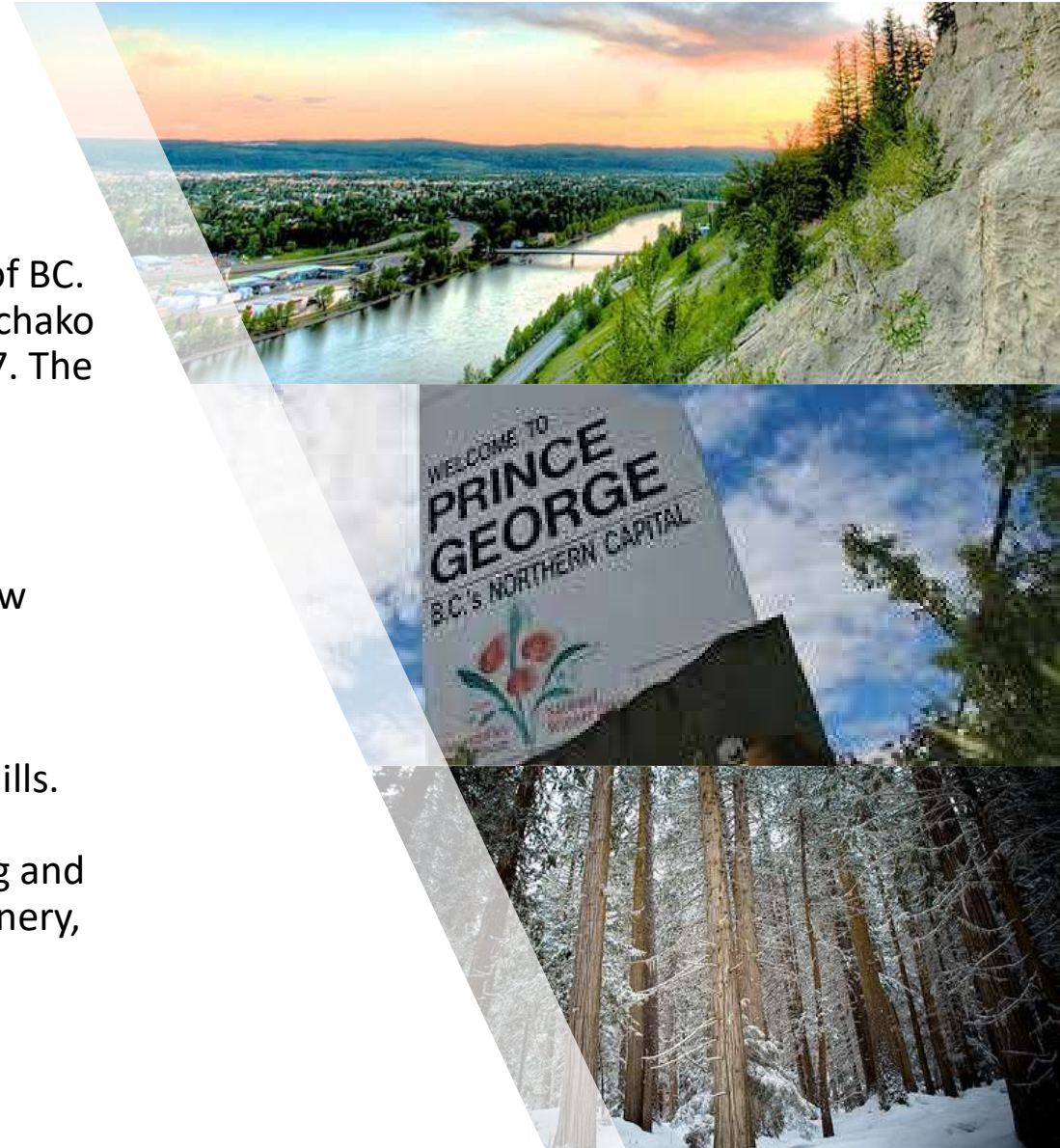
Quesnel

- Located nearly evenly between the cities of Prince George and Williams Lake.
- It is on the main route to northern British Columbia and Yukon. It is claimed to be home to the world's largest gold pan, although this is disputed by Nome, Alaska.
- The Rocky Mountaineer train also travels through and stops overnight in Quesnel.



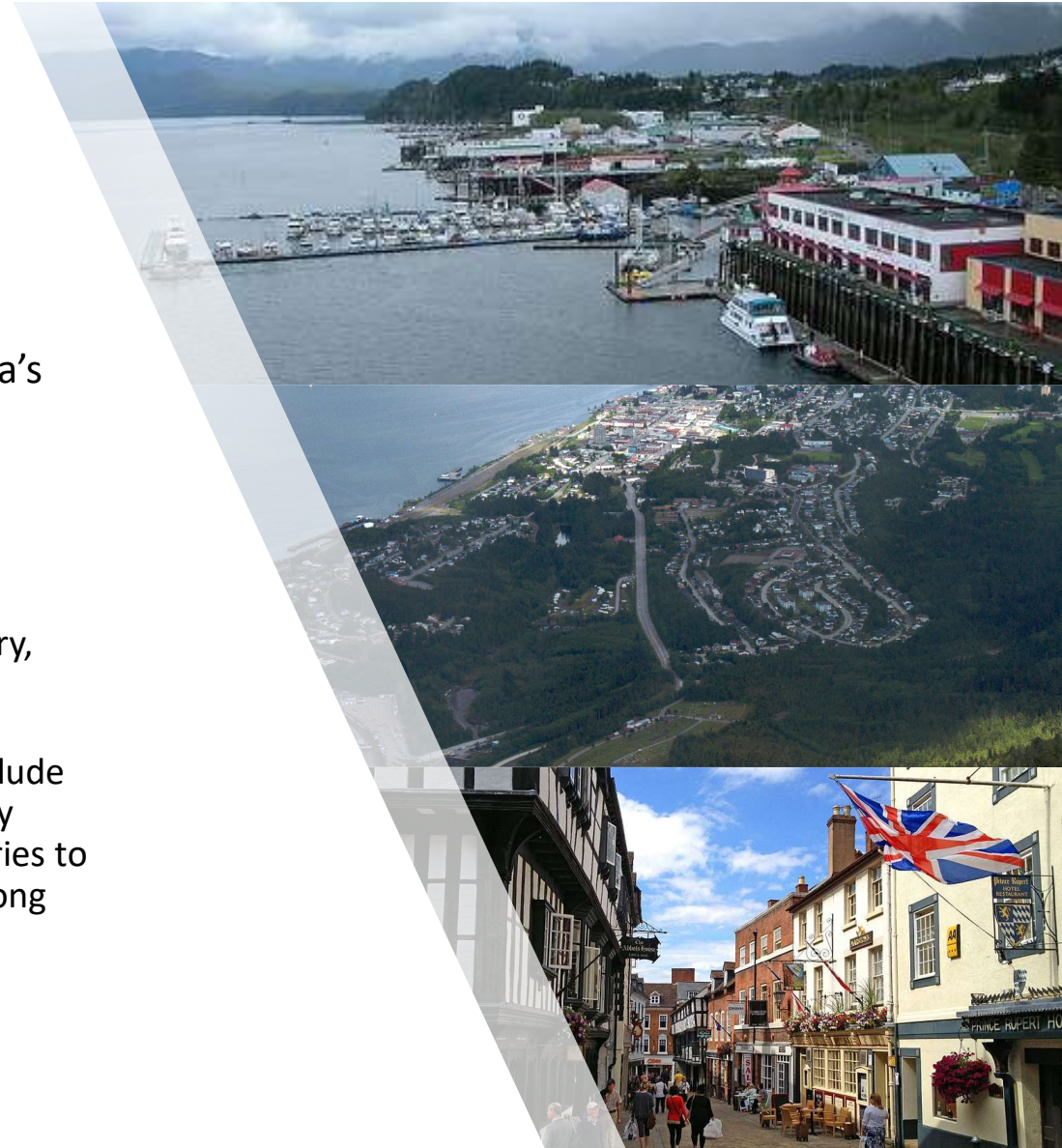
Prince George

- Prince George is the largest city in the north of BC. Situated at the confluence of the Fraser and Nechako Rivers, and the crossroads of Highway 16 and 97. The city is the service and supply hub for one of the fastest-growing regions in Canada.
- Education is a key part of the city with the University of Northern BC and the college of New Caledonia.
- Forestry has dominated the area including plywood manufacturing, sawmills, and 3 pulp mills.
- Mining exploration and development is strong and other industries include chemical plants, oil refinery, brewery, dairy and aluminum boat building.



Prince Rupert

- Prince Rupert is a seaport on British Columbia's northern coast.
- Its sheltered harbour is the deepest ice free natural harbor in the world.
- Prince Rupert currently relies on the fishing industry, port, and tourism.
- Passenger ferries operating from Prince Rupert include BC Ferry service to the Haida Gwaii, and to Port Hardy on Vancouver Island, and Alaska Marine Highway ferries to Ketchikan, Juneau and Sitka and many other ports along Alaska's Inside Passage.



Victoria – Capitol of BC

- Victoria is the Capital of British Columbia and sits on the craggy southern end of Vancouver Island.
- The city's British colonial past shows in its Victorian architecture, including stately Craigdarroch Castle mansion.
- Butchart Gardens, with 55 acres of vivid floral displays, plus statuary, water features and a carousel, is one of many formal gardens in the city.
- Enjoy the shops, waterfront, restraints and the famed Empress Hotel

