



Rotary District 5050 Peace Arch Journal



Volume 23 Issue 11

May, 2010

Officers of Rotary International District 5050

Governor

Larry Jubie (Linda)

Everett, WA

328 Alverson Blvd.
Everett, WA 98201

Res 425-258-1215

Cell 425-327-1555

FAX 425-258-9618

E-mail:

lwjubie31@hotmail.com

Governor Elect

Wayne Wiebe (Arlene)

Langley, B.C.

7734 209A Street
Langley, B.C. V2Y 2E4

Res 604-534-2824

FAX 604-534-2824

E-mail:

wawiebe@gmail.com

Governor Nominee

Jane Helten

South Whidbey Island, WA

4628 Rhodie Lane
Freeland, WA 98249

Direct: 360-331-7306

Cell: 360-631-0752

Fax: 360-331-7328

E-mail:

janehelten@gmail.com



Message from the District Governor

Greetings Fellow Rotarians:

Our newest Rotary Club, The Surrey Newton Rotary is now official. They were chartered on April 8th. Their charter night was April 10th at the Eagle Quest Golf Club. A number of district and local Rotarians attended to wish them well—too many to list in this newsletter. They chartered with 35 new Rotarians. Congratulations to President Harjinder Thind (pictured on the left with DG Larry) on the fastest growing club in the district. Please stop by and visit them. Information regarding their meeting time and place is on the district website.

We now have the GSE teams from Brazil and India traveling in our district. Due to unforeseen circumstances, the team from India was delayed in arriving. My heartfelt thanks to GSE Chair Rob Martin and Inbound Chair Bev Harrington for all their efforts in making the adjustments to get them here. Both teams will be presenting at this year's district conference at the Tulalip Hotel and Conference Center. If you have not yet registered to attend, you are in luck. It is not too late to register. The registration form can be downloaded from the District Website at www.district5050.org. There are still plenty of openings at the Conference Golf Tournament. It will be held at the Cedarcrest Golf Course in Marysville with a dinner afterwards at the Hotel and Conference Center. You can arrange your own foursome or our Conference Golf Chair, Tom Thetford, (tthet1122@verizon.net), will arrange one for you.

Thank you for all of your hard work. Remember, "THE FUTURE OF ROTARY IS IN YOUR HANDS."

Your Governor,
Larry

It is time to party!
The planners are ready!

Index for some of the articles

2. Golfun Saturday August 21, 2010, Poster
3. Remembering Members of the Rotary Family
4. Notes from Literacy Seminar & Fraser Heights
5. Langley Sunrise Aids Animal Shelter
6. Guest speakers for 2010 District Conference
7. President Nom. Seminar & District Assembly
8. Assembly Photos & Surrey-Newton Chartered
9. Golfun 2010 Registration Form
10. Traveling Peace Arch & Club Visioning
- 11 & 12. March, 2010, D5050 Statistics



A part of the committee (l to r) Marysville Mayor Dennis Kendall, Conference MC Randy Petty, DG Larry Jubie, PDG/Conference Chair Harv Jubie, Mike Shepard, Julie Frauenheltz, and Kris Wehmeyer.

See you at the Tulalip—May 14-16, 2010





GOLFUN



Saturday, August 21, 2010

USELESS BAY GOLF AND COUNTRY CLUB (Whidbey Island)

Website address: <http://www.uselessbaygolf.com/>

Cost is \$110 USD: Includes green fees, a cart, and dinner

Arrive at 10:30 A.M. - Tee-Time at 1:30 P.M.

11:00 AM Lunch and Individual Contests: Longest Drive, Putting



A SEMIAHMOO Resort Weekend Drawing (for registrations paid prior to July 1st)

The Rotary club that donates the most to The Rotary Foundation, as part of **Golfun**, will win a trip to Las Vegas for four including air fare.

It could then be used as a fundraiser for your club.

DONATED BY: JACK NG, CHINA CITY, FREELAND & OAK HARBOR ,WA

Copy this link for detailed information and sign up:

http://www.clubrunner.ca/dprg/dxhome/dxeventstab/_eventitem.aspx?did=5050&index=8445&linkcat=5&dir=f&tail=3

Contact Information: DGN Jane Helten at janehelten@gmail.com or at 360-631-0752

The Peace Arch Journal



The monthly newsletter for District 5050

Larry Jubie
Governor

The monthly publication is a service to District club officers and members. It is intended as a source of news and opinion from throughout the district. The mission is to promote communication, understanding, fellowship, and fun beyond club meetings, in a manner complementary to shared efforts at placing *Service Above Self*.

Please send articles and news in MS Word docs, with or without pictures, attached to emails and make some kind of reference to Rotary in the subject line. Note that the editor is not a professional journalist, and he appreciates conservation of space in order to meet the sender's needs and the editor's time.

It is requested that articles be submitted by the 15th of the month prior to the month of publication.

Address any and all information to *Peace Arch Journal* editor:

Bob Knight *Snohomish*
PO Box 612, Snohomish, WA
98291-0612
Phone: 360-568-5629
E-mail: RDKPDK@aol.com

Visit District 5050's
Web site at:

www.district5050.org

EDITOR'S COMMENTARY:

As I write these comments it is April 19, 2010. As District Governor Larry has noted, a lot of activity has been taking place in District 5050, and so much more is ahead of us. In this edition I am including brief reflections from three district programs that I have attended: the Literacy Seminar in Bellingham, the Club President Nominees' Training in Mt. Vernon, and the District Assembly held this past Saturday in Surrey.

During District Governor Elect Wayne Wiebe's comments at District Assembly, he reflected on the use of the district's monthly newsletter, the *Peace Arch Journal*, in sharing information about our clubs. With that in mind, I invite you to look at the left side bar on this page. Over the years, this publication has somehow expanded from five pages in the July/August, 2003, edition to what is now routinely up to twelve pages. This has been possible because of the information which has been submitted for consideration from our district's clubs and individual Rotarians.

Today I am asking myself, how should I organize this edition in a way that is fun and worth someone's valuable time?...and where in my files did I put those important articles that some people asked me about when they saw me at District Assembly?

Hey, there, PDG Rob Martin, can you send me a funny story? Perhaps about some happy-go-lucky bovines who are out there enjoying the beautiful springtime?



"Why are you looking at me like that? I am just trying to stand out from the rest of the crowd!"

Photo is thanks to Loleta Cheese Factory

Remembering Members of Our Rotary Family

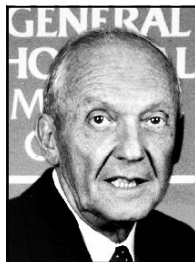


Sheila Ann Follows

The wife of late Past District Governor (1991-1992) Jim Follows, passed away suddenly on April 4, 2010, in White Rock, B.C. She was born on December 9, 1933, in Covington, England.

She was predeceased by her husband and leaves behind her loving children, grandchildren and many friends.

Sheila was buried on April 16, 2010, at Victory Memorial Park Funeral Centre, Surrey, B.C.



Alfred Muller Jr.

The past club president (1979-1980) of the Rotary Club of Everett died on Easter morning, April 4, 2010, following a brief illness. He was born in Santa Fe, New Mexico, on March 8, 1923.

He was married to Kaye, a surgical nurse, for 62 years. Al's vocation was hospital administrator. He retired from Providence General Hospital in Everett, where he continued as a volunteer.

Al became a member of the Everett Rotary in 1957. The visitors to the noon meetings remember him a fixture, since 1999, as the person who sold them their lunch tickets. "A very sweet man will be truly missed by our Club and its members."

I love you not only for what you have made of yourself,
But for what you are making of me.

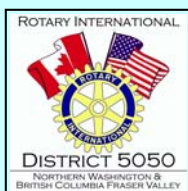
— Roy Croft

Administration District 5050

Secretary Langley Central
Dennis Ratcliff (Sharon)
 20269-41A Ave
 Langley, BC V3A 2ZB
 Res: 604-534-8292
 Bus: 604-534-8292
 Fax: 604-534-8423
 E-Mail: felid9@telus.net

Treasurer Marysville
Jodi Widmann (Lou)
 1031 State Ave., Suite 204
 Marysville, WA, 98270
 Phone 360-657-3145
 Fax 360-657-3149
 E-mail: jodiw@northcountybank.com

District Administrator Everett
Linda Murray (Bill)
 4943 Ocean Avenue
 Everett, WA 98203-
 Bus 425-348-3850 Res 425-347-6738
 Cell 425-422-9141
 FAX 425-353-8934
 E-mail Linda@evergreensecurity.com



District 5050 Events
www.district5050.org

May 14-16, 2010
District 5050 Conference
 Marysville, WA

June 20-23, 2010
Rotary International Convention
 Montreal, Canada

August 21, 2010
(Saturday)
GOLFUN
Useless Bay Golf & Country Club
 Langley (Whidbey Island)
 Washington

A Overview Report on Recent District 5050 Events



Literacy is essential to world peace & understanding

**On Saturday, March 20, 2010, the annual district literacy seminar was held at the Hampton Inn, just north of Bel-
 lingham, Washington.**

The program was hosted by our District Literacy Chair Rhian Piprell, with the support of Barbara Hoensalar (who will be the Literacy Chair in 2010-11). The seminar considered four areas:

early literacy (ages 0-12), community literacy, adult literacy and international literacy.

- **Mary Jo Christenson** spoke about *Ready for Kindergarten* (see the table display) and the concern about adequate funding for early education. She had been with a school foundation in San Diego, California, which was more than just scholarships. She encouraged the partnering with service clubs.
- **Catriona Sturton** shared about her connection with Dolly Parton's *Imagination Library* and some ways in which Rotary is now involved.
- **Julie Rioux** is involved with a Tri-Cities Community Literacy Program in the B.C. area of Coquitlam.
- **Marilyn McDonald** reflected on her involvement as adult literacy coordinator with the University of Fraser Valley. She noted how controlling a person who is illiterate has to be, and how they blossom when they have learned to read.
- **Rhian and Barbara** provided updates on District 5050's Mobile Library Project in Guatemala.



(L to R) Julie Rioux, Barbara Hoensalar, Rhian Piprell, Catriona Sturton, and Marilyn McDonald.

For information about District 5050's Literary Committee, send an email to Rhian at: rpiprell@library.coquitlam.bc.ca.

See other district event reports on page 7

A few notes from the Rotary Club of Fraser Heights provided by club president Catherine Levan

Our club was founded to promote the concept that it is fun to give. Our members give of themselves, their time, and their efforts because each one strongly believes in the pithy saying attributed to Albert Einstein: "All that is valuable in human society depends upon the opportunity for development accorded the individual." Our projects are marked by a visible and palpable involvement of family where everyone has fun, while making a difference.

Our first service project was to put on a party for seriously ill children. For the Halloween Project we partnered with the Children's Make A Wish Foundation. There was a generous sprinkling of magic by a Rotary guest, Terri MacLaughlin. Letters of gratitude flooded the Children's Foundation, and all agreed that we should make this an annual event.



The following article was submitted by club president John Dance and reproduced with the written approval of Roxanne Hooper and the *Langley Advance Newspaper*. © Langley Advance 2010

Offering aids shelter startup: Sunrise Rotary Club donates cash to augment the Gateway of Hope with lockable kennels/storage and accessories for interim housing.

Roxanne Hooper rhooper@langleyadvance.com
Langley Advance

Friday, February 05, 2010

An infusion of cash from the Rotary Club of Langley Sunrise provided \$5,000 towards the recently completed dog kennels and cart storage at the Gateway of Hope.

“Plus, another cheque for \$3,420 - also delivered Wednesday - helps Langley’s new homeless shelter and outreach facility outfit its transition housing with items such as TVs, toasters, microwaves and irons,” Salvation Army Major George Perkin said, when getting the money.

"It means that the people coming into the shelter with pets have a safe place to put them," added Salvation Army's Troy Gaglardi, offering a tour of the four lockable kennels designed to temporarily house cliens’ dogs or shopping carts.

In many cases, the homeless who turn to the Salvation Army for shelter or aid during extreme weather, for instance, would rather endure the cold if they fear losing their personal effects or canine companions”.

“Often a dog is the only close friend a homeless person has, always there to listen and keep them warm,” said Rotary president John Dance. “Therefore, it's important to know that there's a safe, secure place for them, too,” he said, noting Langley's new shelter is one of few to offer kennels.

Since the shelter opened in October, there has yet to be a request for a kennel.

But Perkin was glad to see the space completed last week, noting there have been a few cases this winter when clients could have locked up their shopping carts.

The last chunk of cash donated to the interim housing wings came from the Rotary's Crab Fest. Proceeds from last fall's event were divided between the Gateway and Langley Lodge.

The Lodge will receive \$4,200 this month, money earmarked to help in thir recent expansion.



Salvation Army Major George Perkins, Sunrise Rotary president John Dance, and their canine friend Suzie Q check out the new dog and shopping cart downstairs at the Gateway Hope facilities.
 CREDIT: Roxanne Hooper/Langley Advance

Team Leader of the GSE to India, Linda Murray, presented a gift from the governor of district 3110

District 3110, in the state of Uttar Pradesh in India where Linda took her GSE team, to our district governor. It is a “Lord Krishna,” one of the Hindu gods.

According to Wikipedia, “The stories of Krishna appear across a broad spectrum of Hindu philosophical and theological traditions. They portray him in various perspectives: a god-child, a prankster, a model lover, a divine hero and the Supreme Being.”

The governor gave it to Linda at the beginning of her trip at their district conference. It was cast metal and weighed about ten pounds. Linda had to carry it around the whole time in her suitcase.

As you can see, DG Larry Jubie was glad to receive it.

Photograph & article provided by Bill Murray,
 District 5050 Website Administrator





Rotary District 5050's Conference 2010
May 13 - 16, 2010: Tulalip Casino & Resort Center
Marysville, Washington, USA

WE'RE GOING TO HAVE A WHALE OF A GOOD TIME!

Go to the district web site for the registration form and agendas

Below is information on a few of our program speakers.



RON BURTON: RI President John Kenny's Representative to the Conference

He has been a Rotarian since 1979, is a member and past president of the Rotary Club of Norman, Oklahoma, and is a past district governor, District 5770. He is a trustee of The Rotary Foundation, which he served as vice-chair in 2008-2009.

Ron is an attorney and a member of the United States Supreme Court Bar and the American and the Oklahoma Bar Associations.

He and his wife, Jetta, are Paul Harris Fellows, Benefactors, Major Donors, and members of the Bequest Society and the Arch Klumph Society. Has been a recipient of the RI Service Above Self Award and the Boy Scouts of America Silver Beaver Award.



STEVEN SOLOMON (pictured with Jane Goodall)

He is an Annual Giving Officer for The Rotary Foundation serving Rotary International Zones 25 (north west USA) and 26 (central North America), and he is responsible for helping club and district officers achieve their APF (Annual Program Fund) goals, as well as working with individual donors. He is an honorary member of two Rotary clubs.

Steven was a member of an Interact club in high school and was an Ambassadorial Scholar at the University of KwaZulu-Natal in Durban, South Africa. He has worked with Roots & Shoots, the global youth service learning program of the Jane Goodall Institute in South Africa, Tanzania, Taiwan and the US.



PETE KINCH

He has been a Rotarian since 1985, first joining the Everett noon club and then becoming a charter member of the Everett-Port Gardner club in 1987. He was their club president in 2004-2005.

Pete has been the volunteer Executive Director of the Hands for Peacemaking Foundation (HFPP), an organization that serves some of the poorest of the poor in the remote, war torn areas in Guatemala. The HFPP was founded in 1985 by the late Snohomish family physician and past club president of the Rotary Club of Snohomish, Leon Aller MD and his wife Virginia.

He will talk about a cooperative project in the village of Canton Las Maravillas, Guatemala, involving six Rotary clubs from Canada, Guatemala, and the United States.



APOOVA MALLYA

He is a Program Officer for Vaccine Delivery in the Immunization Program, under the Global Health Program of the Bill and Melinda Gates Foundation.

Apoova brings a passion for global health issues as well strong strategic, financial, and management skills in grant making for vaccine preventable diseases within the Global Health Program. Recently, he has focused his efforts on developing strategic plans for foundation investments in polio and measles and developing grants for purchasing vaccines in developing countries.

He has been a community health care worker for TB & leprosy in the rural areas of Maharashtra, India.

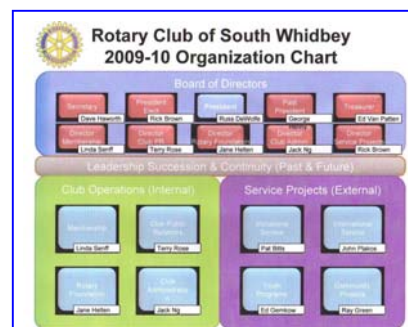
Club Presidents for Rotary Year 2011-12 Met in Mt. Vernon, WA, for a Running Start



District Governor Nominee Jane Helten invited the future club presidents who will be part of her team to meet with her on March 27, 2010, for a time of fellowship and training. The program was organized by Incoming District Trainer Cheryl McKeever and supported by a cadre of Assistant Governors. The day was concluded with an excellent motivation presentation by Past District Governor Rob Martin, including issues relating to membership retention.

Topics covered included:

- Club Leadership Plan and Invitation to Golfun 2010 - DGN Jane Helten
- Reverse Planning Guide and 100 Rotary Club Ideas - AG/DGD Sean Hogan and DT Cheryl McKeever
- Making a PowerPoint Presentation - AG Allan Asaph
- Foundations within the Club - AGs Darrell Burnham and Scott Dudley
- Navigating the District 5050 Web site - AG Carol Tichelman
- Email Etiquette - AG Lee Harman
- Forming A Rotary Club Foundation (There was a session for Canadian clubs and Past District Treasurer Tommy Thomson gave a presentation for US clubs).



Editor's notes: I regret that there is not space enough to report in detail the information presented during the above training seminar. For an example of an excellent club leadership plan, go to South Whidbey's website and click on [Club Leadership Org Chart 2009-10](#). Regarding club meetings, consider the importance of taking care of the club speaker, including letting the person know how much time he or she will have. Consider using happy dollars toward club service, e.g., fellowship events.

Rotarians Gathered for annual District 5050 Assembly in Surrey, B.C.



Over 300 people attended the April 17, 2010, training program at Kwantlen Polytechnic University in Surrey, B.C., and heard District Governor Elect Wayne Wiebe share his goals for Rotary Year 2010-11 (refer to listing on page 3 of the April, 2010, edition of the Peace Arch Journal).

Topics covered during the three morning breakout sessions included: club administration, membership; public relations, secretary, sergeant-at-arms, service projects, and treasurer. Other areas included: fundraising ideas, public speaking, Rotary speakers bureau, Rotary World Help Network, social media, The Rotary Foundation, and youth programs.

After the BBQ lunch (held indoors because of rain) the Group Study Exchange (GSE) team who leaves for Brazil on April 30, 2010, shared the presentation they will give to clubs in Brazil.

Additional District Assembly material on page 8

A few More District Assembly Photographs



PDG Gary Hollick's public speaking class.

Club President Cathrine Levan talked about the involvement of the Surrey Fraser Heights in the Shelter Box program.



PDG Kevin Shaughnessy's sergeant-at-arms class

Standing in a classroom that seemed to be promoting Earth Day, he talked about the responsibilities of the sergeant-at-arms - have fun and collect lots of money (*that is sort of what he said*).



Dan Gallant, a member of the Port Moody club, spoke about the Rotary World Help Network and the shipping of containers filled with items including medical equipment around the world. Their web site is: www.rwhn.org. He is their director.



After the BBQ lunch Team Leader Jackie Kendziorek introduced the District 5050 GSE team that will fly to Brazil on April 30, 2010. From L to R: Brent Manyk (Maple Ridge), Heather Lewis (Ferndale), Christopher Knowles (Mission), and Barbara Zbeetnoff (White Rock). They shared their presentations which have been partially translated into Portuguese.

A Post Assembly Gathering of District Leaders



There was a bit of fellowship at Christiana Flessner's home. Lee Harman attempted to teach Krista Burnham about doing something with wine corks. On the right are Lee Harman, Jane Helten, Christiana Flessner, Bill Robson, Carol Tichelman, and Cheryl McKeever.

**Charter Night on April 10, 2010
The Rotary Club of Surrey-Newton, B.C.**

Thirty-five charter members and guests from various Rotary clubs attended this special evening.

The directors are: Charter President Harjinder Thind, Ajay Chhibber, Pres.Elect, Liza Muyco, Secretary, Marianne Brown, Treasurer, Tejinder Singh, PRO and Jagtar Dhaliwal, Membership, Shiv Brar, Community Service, and Jasvinder Dhaliwal, Sergeant-at-Arms



Above (L to R) A guest (name unknown), Jolly Dhaliwal, Cliff Annable, Cass Parel, and Harjinder Thind.



Back (L-R) Tejinder Singh, Cass Parel, Ajay Chhibber, Dolly Dhaliwal, and Jaglar Dhaliwal.

Front (L-R) Wayne Wiebe, Christiana Flessner, Shiv Brar, Liza Muyco, Harjinder Thind, Larry Jubie, Linda Jubie, and Marianne Brown



GOLFUN 2010

REGISTRATION

Saturday August 21, 2010

WHIDBEY ISLAND
 USELESS BAY GOLF & COUNTRY CLUB
 5725 COUNTRY CLUB DR
 LANGELY, WASHINGTON 98260

NAME _____
 Register and **pay before July 1st** for Semiahmoo drawing pay, play and be present to win.

TEAM NAME _____ CLUB _____

TEAM PLAYERS _____ HANDICAP _____
 _____ HANDICAP _____
 _____ HANDICAP _____
 _____ HADNICAP _____

LUNCH \$15.00 Y N #OF PEOPLE _____

HOME HOSTING NEEDED Y N #OF PEOPLE _____

FERRY PICK UP Y N TIME _____ #OF PEOPLE _____

CR CARD ON LINE _____ \$110.00 US
 (Includes green fees, cart & dinner **no cart rebate for walkers**)

BY CHECK: \$110.00 US (Canadian \$'s please add conversion)

MAIL TO: JANE HELTEN
 4628 RHODIE LANE
 FREELAND, WA 98249

QUESTIONS: 360-631-0752



http://www.clubrunner.ca/dprg/dxhome/dxevenstab/_eventitem.aspx?did=5050&index=8445&linkcat=5&dir=f&tail=3

The Traveling Peace Arch



Jeff Wallin, Wayne Leach & Mike McIntyre

On Wednesday, April 14, 2010, Club President Mike and President-Elect Jeff transferred custody of the Peace Arch from the Rotary Club of Oak Harbor (WA) to Club President Wayne during a meeting of the Rotary Club of Central Langley (BC) during their club meeting at the Newlands Golf and Country Club in Langley.

Visit Booth #2008 at RI Convention



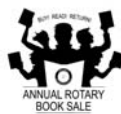
Anup Singh Jubbal, a member of the D5050 Rotary Club of Surrey Guildford, has invited Rotarians to visit his booth at Montreal and learn about the India Eyesight Project.



Chilliwack's Exchange Students
Claudia Gimeno (Spain) & Elena Rubiu (Italy)

October 2010 Event

These young women want you to know that Chilliwack will be celebrating their 25th Annual Book Sale.



Club Visioning Sessions: Arlington & Mission

The Visioning team meet with the Mission Mid-Day (BC) club on March 16, 2010, at the request of Club President Wilson Sieg, and they traveled down to Arlington (WA) on April 20, 2010, at the request of President-Elect Duane Rhodes.



Photo from the Arlington session being led by Carol Tichelman

Duane Rhodes notes regarding the Arlington experience.

The Visioning Facilitation was a good experience for our club. I had to be talked into the idea, because initially I thought the proposal was to spend four hours writing a vision statement for our club, and that seemed like way too much time. When I came to understand that the evening would lay the detailed groundwork for the club to write a long-range plan, I wanted to do it. I was impressed by the willingness of our members to set the evening aside to be there, and the comments since then have been positive. The team of facilitators from the district, led by Carol Tichelman, did a really good job.



Reviewing ideas expressed by the group.

Our challenge as a club now is to follow up, sharing the results of the evening with our full membership, and proceeding with the development of a long-range plan by our committees. The full club briefing will be in May. The planning will begin



Mission Mid-Day members writing out their ideas and visions.

after that meeting, with the expectation we will go into our next Rotary year with a new long-range plan, staffed and oriented committees and a budget that reflects the plan and committee structure.

Rotary District 5050 Statistics

Prepared by District Secretary Dennis Ratcliff



Monthly Attendance Report for March, 2010

| Club Name | Members as of June, 2009 | New Members This Month | Terminations This Month | Total Members This Month | Number of Meetings This Month | Gain/Loss This Month | YTD Gain/Loss | Attendance Percentage |
|---------------------------------|-----------------------------------|---------------------------------|----------------------------|--------------------------------|-------------------------------------------|----------------------------|------------------|--------------------------|
| Abbotsford | 70 | 2 | 0 | 60 | 5 | 2 | -10 | 67.00 % |
| Abbotsford-Matsqui | 25 | 1 | 0 | 30 | 4 | 1 | 5 | 63.00 % |
| Abbotsford-Sumas | 26 | 2 | 0 | 25 | 5 | 2 | -1 | 86.67 % |
| Aldergrove | 29 | 0 | 0 | 28 | 4 | 0 | -1 | 66.10 % |
| Anacortes | 66 | 0 | 1 | 71 | 5 | -1 | 5 | 78.03 % |
| Arlington | 69 | 0 | 1 | 67 | 4 | -1 | -2 | 65.00 % |
| Bellingham | 174 | 1 | 0 | 170 | 0 | 1 | -4 | 68.89 % |
| Bellingham Bay | 122 | 0 | 11 | 109 | 5 | -11 | -13 | 92.20 % |
| Bellingham Sunrise | 45 | 0 | 0 | 44 | 4 | 0 | -1 | 70.00 % |
| Burlington | 70 | 1 | 0 | 65 | 4 | 1 | -5 | 66.54 % |
| Burlington Mid-Day | 25 | 0 | 1 | 29 | 4 | -1 | 4 | 75.00 % |
| Chilliwack | 195 | 3 | 2 | 187 | 4 | 1 | -8 | 84.00 % |
| Chilliwack Mt. Cheam | 61 | 0 | 0 | 65 | 4 | 0 | 4 | 74.19 % |
| Chilliwack/Fraser | 67 | 0 | 0 | 66 | 5 | 0 | -1 | 61.38 % |
| Cloverdale | 23 | 0 | 0 | 24 | 5 | 0 | 1 | 65.95 % |
| Coquitlam | 42 | 1 | 1 | 44 | 5 | 0 | 2 | 68.42 % |
| Coquitlam Sunrise | 29 | 0 | 0 | 30 | 5 | 0 | 1 | 68.27 % |
| Everett | 175 | 2 | 1 | 171 | 5 | 1 | -4 | 63.73 % |
| Everett-Port Gardner | 45 | 0 | 0 | 41 | 5 | 0 | -4 | 80.00 % |
| Fidalgo Island | 42 | 2 | 1 | 35 | 5 | 1 | -7 | 56.77 % |
| Haney | 43 | 0 | 0 | 44 | 0 | 0 | 1 | 0.00 % |
| Hope | 17 | 0 | 1 | 14 | 4 | -1 | -3 | 73.20 % |
| LaConner | 48 | 0 | 0 | 48 | 5 | 0 | 0 | 67.77 % |
| Lake Stevens/Granite Fall | 36 | 0 | 0 | 32 | 4 | 0 | -4 | 66.00 % |
| Langley | 31 | 0 | 0 | 31 | 4 | 0 | 0 | 70.00 % |
| Langley Central | 76 | 0 | 0 | 72 | 5 | 0 | -4 | 69.68 % |
| Langley Sunrise | 22 | 0 | 0 | 26 | 5 | 0 | 4 | 85.40 % |
| Marysville | 67 | 0 | 0 | 70 | 5 | 0 | 3 | 78.23 % |
| Marysville Sunrise | 19 | 0 | 0 | 18 | 4 | 0 | -1 | 80.56 % |
| Meadow Ridge | 48 | 0 | 0 | 48 | 0 | 0 | 0 | 67.08 % |
| Mission Midday | 25 | 0 | 0 | 32 | 5 | 0 | 7 | 60.65 % |
| Mission Morning | 31 | 0 | 0 | 32 | 5 | 0 | 1 | 80.60 % |

Continued from page 11 **Membership & Attendance Report for March, 2010**

| Club Name | Members as of June, 2009 | New Members This Month | Terminations This Month | Total Members This Month | Number of Meetings This Month | Gain/Loss This Month | YTD Gain/Loss | Attendance Percentage |
|--------------------------------------|-----------------------------------|---------------------------------|----------------------------|-----------------------------------|-------------------------------------------|----------------------------|------------------|--------------------------|
| Monroe | 26 | 1 | 0 | 26 | 4 | 1 | 0 | 82.00 % |
| Mount Baker Rotary | 54 | 0 | 0 | 61 | 5 | 0 | 7 | 86.00 % |
| Mount Vernon | 50 | 0 | 0 | 49 | 0 | 0 | -1 | 0.00 % |
| North Delta | 45 | 0 | 0 | 42 | 4 | 0 | -3 | 71.88 % |
| North Whidbey Island Sunr | 32 | 2 | 0 | 35 | 5 | 2 | 3 | 66.00 % |
| Oak Harbor | 90 | 0 | 0 | 92 | 4 | 0 | 2 | 47.00 % |
| Port Coquitlam Centennial | 28 | 2 | 1 | 24 | 4 | 1 | -4 | 45.00 % |
| Port Moody | 44 | 1 | 0 | 45 | 5 | 1 | 1 | 72.00 % |
| San Juan Island | 24 | 2 | 0 | 29 | 5 | 2 | 5 | 85.71 % |
| Sedro Woolley | 102 | 2 | 0 | 103 | 4 | 2 | 1 | 61.86 % |
| Semiahmoo (White Rock) | 58 | 0 | 1 | 61 | 4 | -1 | 3 | 76.37 % |
| Skagit (Mount Vernon) | 72 | 0 | 0 | 63 | 5 | 0 | -9 | 68.00 % |
| Snohomish | 18 | 0 | 0 | 15 | 4 | 0 | -3 | 80.00 % |
| South Everett/Mukilteo | 61 | 1 | 1 | 65 | 4 | 0 | 4 | 84.00 % |
| South Whidbey Island | 73 | 0 | 9 | 67 | 5 | -9 | -6 | 58.91 % |
| Stanwood/Camano Island | 40 | 0 | 0 | 35 | 5 | 0 | -5 | 61.00 % |
| Surrey | 20 | 0 | 0 | 17 | 5 | 0 | -3 | 54.12 % |
| Surrey-Fraser Heights | 20 | 0 | 0 | 29 | 0 | 0 | 9 | 0.00 % |
| Surrey-Guildford | 26 | 0 | 0 | 27 | 0 | 0 | 1 | 0.00 % |
| Surrey-Newton | 0 | 3 | 0 | 25 | 4 | 3 | 25 | 66.75 % |
| Whatcom County North | 54 | 1 | 0 | 55 | 4 | 1 | 1 | 78.57 % |
| White Rock | 64 | 0 | 0 | 64 | 4 | 0 | 0 | 86.00 % |
| White Rock Millennium | 18 | 0 | 0 | 25 | 5 | 0 | 7 | 86.16 % |
| White Rock Peninsula | 17 | 0 | 0 | 17 | 5 | 0 | 0 | 87.01 % |
| White Rock-Peace Arch | 33 | 1 | 1 | 32 | 5 | 0 | -1 | 76.86 % |
| Totals | 2932 | 31 | 33 | 2931 | 232 | -2 | -1 | |
| Average attendance percentage | | | | | | | | 68.03 % |

Highlights for the Month of March, 2010

- Total number of members in District 5050 as of March 31, 2010, was 2,931 (versus 2,950 as of March 31, 2009).
- March, 2010: Inducted 31 new members and terminated 33 members.
- Average Attendance for the District for the month of March, 2010, was 68.03 % (versus average attendance of 70.18% for March, 2009)