

# Rotary District 5050 Peace Arch Journal



Volume 23 Issue 3

September, 2009

## Officers of Rotary International District 5050

### Governor

**Larry Jubie (Linda)**

*Everett, WA*

328 Alverson Blvd.  
Everett, WA 98201

Res 425-258-1215

Cell 425-327-1555

FAX 425-258-9618

E-mail:

lwjubie31@hotmail.com

### Governor Elect

**Wayne Wiebe (Arlene)**

*Langley, B.C.*

7734 209A Street  
Langley, B.C. V2Y 2E4

Res 604-534-2824

FAX 604-534-2824

E-mail:

wawiebe@gmail.com

### Governor Nominee

**Jane Helten**

*South Whidbey Island, WA*

4628 Rhodie Lane  
Freeland, WA 98249

Direct: 360-331-7306

Cell: 360-631-0752

Fax: 360-331-7328

E-mail:

janehelten@gmail.com

## Message from the District Governor

Greetings Fellow Rotarians

September is "New Generations Month". I wasn't sure exactly what that meant. I went on the Rotary International website and did a search and here is what I came up with.

Think about all of the different ways that your club can become involved with the next generation of Rotary - our youth. Does your club sponsor an Interact or Rotaract Club? Is your club involved in the Rotary Youth Exchange program? Does it nominate outstanding youth from your community to participate in Rotary Youth Leadership Awards (RYLA)? Has it conducted any service projects benefiting local youth?

Your club's involvement in youth programs not only can help attract younger prospective members who have families, but also can lead to increased satisfaction and retention among current members. As an added benefit, involving your community's youth in Rotary's programs and service projects teaches them about Rotary's extraordinary work and prepares them to become the Rotarians of tomorrow.

This year, the Rotary Zone 24 Institute is from September 14 - 20 in Edmonton, Alberta, Canada. DGE Wayne Wiebe, DGN Jane Helten and I will be in Edmonton participating in training seminars. For those of you not attending the Institute, we have another big event happening in our district. September 18, 2009, is the Charter Night for the Surrey - Fraser Heights Rotary Club. President Cathrine Levan is extending a special invitation to those of you that wish to attend this event. Information is available on our diistrict website, [www.District5050.org](http://www.District5050.org), or by contacting President Cathrine at [clevan@shaw.ca](mailto:clevan@shaw.ca).

"The Future of Rotary is in Your Hands"

Your Governor,



**DG Larry Jubie at Golfun**

## Index for some of the articles

2. White Rock / Abbotsford-Sumas
3. D5050 Membership Seminar Oct 3rd
4. Oktoberfest / Book Sale
5. DG's Visits / PHF Medallian / Crabs
6. Typhoon Hits Taiwam / World Polio Day
7. District Governor Goes to The Fair
8. Remembering PDG Jim Caldwell
9. Photos from D5050's Golfun 2009
10. D5050 Statistics for July, 2009
11. Statistical Highlights for July, 2009
12. Opportunity for Post RI Convention Cruise

## District Governor's Visit



Story on page 7



**R I D5050 Assistant Governors**

**Area "A"**

Carol Tichelman  
150 - 6001 Promontory Road  
Chilliwack, BC V2R 3E3  
Res: 604-824-9401  
Res: 604-792-8111  
Cell: 604-819-0363  
Fax: 604-792-8104  
[carol@tichelman.com](mailto:carol@tichelman.com)

**Area "B"**

Bill Dickson  
32510 Badger Ave.  
Mission, B.C. V2V 5S6  
Res: 604-820-1581  
E-Mail: [bill.dickson@sd75.mission.bc.ca](mailto:bill.dickson@sd75.mission.bc.ca)

**Area "C"**

Bert Monsma (Susan)  
6896 Sussex Cres  
Delta, BC, V4E 2P3  
Res 604-805-7045  
Bus 604-590-7238  
FAX 604-590-0902  
E-mail [monsma@dccnet.com](mailto:monsma@dccnet.com)

**Area "D"**

Darrell Burnham (Krista)  
18 Hett Creek Dr. Port  
Moody, BC V3H 4Z7  
Bus: 604 675-2324  
Res: 604 461-8752  
Cell: 778 389-1475  
Fax: 604 675-2312  
[darrellburnham@shaw.ca](mailto:darrellburnham@shaw.ca)

**Area "E"**

Christiana Flessner  
3325 Canterbury Dr.  
Surrey, B.C. V3S 0J4  
Bus 604-536-2022  
Res 604-536-8031  
E-Mail: [cflessner@wheelchairfoundation.ca](mailto:cflessner@wheelchairfoundation.ca)

**Area "F"**

Larry Pollett (Minnie)  
4595 Lost Creek Lane  
Bellingham, WA 98229  
Res 360-734-1583  
Cell: 360-739-5466  
E-Mail: [lpollett@comcast.net](mailto:lpollett@comcast.net)

**Area "G"**

Tom Barrett (Norma)  
64 Garry Oak Lane  
Friday Harbor, WA 98250  
Res: 360 378 5826 Bus: 360 378 4421  
Fax: 360 378 6140  
E-Mail: [ralbe@ahstores.com](mailto:ralbe@ahstores.com)

**Area "H"**

Brock Stiles (Katherine)  
8097 Avery Lane,  
Sedro-Woolley, WA 98284  
Bus: 360 855-0131 Res: 360 856-5814  
Cell: 360 770-3864  
E-Mail: [brock@stileslaw.com](mailto:brock@stileslaw.com)

**Area "I"**

Lee Harmon (Judy)  
635 N. Sunset Dr.  
Camano Island, WA 98292  
Res 360-387-1501  
E-Mail: [rlh@wavecable.com](mailto:rlh@wavecable.com)

**Area "J"**

Lyle Ryan  
8310 Rim Drive  
Everett, WA 98208-3556  
Bus: 425-514-0708 Hm: 425-385-2132  
E-Mail: [lryan@frontierbank.com](mailto:lryan@frontierbank.com)

**District Governor's Visit to White Rock on July 28 2009**

Photographs and Notations By Clifford Grant



DG Larry installed three club directors PCP Daphne Fortin & CP Frank Sequiera Erwin Wieler, Glenda Bartosh, Russ Clinton



(Lower left) PE Derek Lucas, P Frank Sequiera, DG Larry Jubie, Linda Jubie & AG Christiana Flessner. DG Larry is holding the rock the club presented to him to commemorate his official visit. This (heavy) rock is carved by White Rock Rotarian Ves Vukovic. The inscription reads: Governor Larry Jubie 2009 - 2010 District 5050 July 28, 2009 The Rotary Club of White Rock. The rock may be used as a door stop, a decoration in the garden, a welcome at the front door. (Lower right) Rotarians, spouses, Rotary Friends (mostly spouses of Rotarians, widows of Rotarians, interested Rotary supporters).

**The Rotary Club of Abbotsford-Sumas Installation**

In June, 2009, "King Alfred" (alias DGE Wayne Wiebe) installed the President Alan Asaph and the rest of his officers and directors. It was an occasion not to have been missed (even if they did display the previous year's R.I. banner).



## Administration District 5050



### Secretary *Langley Central*

**Dennis Ratcliff (Sharon)**

20269-41A Ave  
Langley, BC V3A 2ZB

Res: 604-534-8292

Bus: 604-534-8292

Fax: 604-534-8423

E-Mail: felid9@telus.net

### Treasurer *Marysville*

**Jodi Widmann (Lou)**

1031 State Ave., Suite 204  
Marysville, WA, 98270

Phone 360-657-3145

Fax 360-657-3149

E-mail: jodiw@northcountybank.com

### District Administrator *Everett*

**Linda Murray (Bill)**

4943 Ocean Avenue  
Everett, WA 98203-

Bus 425-348-3850 Res 425-347-6738

Cell 425-422-9141

FAX 425-353-8934

E-mail Linda@evergreensecurity.com

### Senior Assistant Governor

*Chilliwack*

**Ron Goldfinch (Marie)**

45948 Higginson Rd.  
Chilliwack, BC V2R 2A7

Res: 604 858-8451

Cell: 604 316-7549

Fax: 604 824-4003

E-mail: rgoldfinch@legacypacific.com

### Assistant Governors

See list on page 2

## District 5050 Events

[http://www.clubrunner.ca/dprg/dxhome/\\_home.aspx?did=5050](http://www.clubrunner.ca/dprg/dxhome/_home.aspx?did=5050)

**October 3, 2009**

Membership Seminar  
Bellingham, WA

**October 24, 2009**

Rotary Leadership Inst. - 1 & 2  
Mount Vernon, WA

**November 14, 2009**

Foundation Dinner  
Surrey, B.C.

**May 14-16, 2010**

District 5050 Conference  
Marysville, WA

**June 20-23, 2010**

Rotary International Convention



## Rotary District 5050 Membership Seminar Saturday, October 3, 2009 - With lunch Hampton Inn, Fox Hall

**3985 Bennett Dr., Bellingham, WA**

(Located just off I-5 and the Bellingham Airport)

Registration Time: 8-9 am / Training time: 9 am-2 pm

Cost: \$45 a person Rotaractors cost: \$25 a person

### Partial Program Agenda:

- Welcoming by District Governor **Larry Jubie**
- Introduction by District 5050 Membership Chair **Gale Acker:**  
Where are we (state of membership)?  
Where we came from in 2008-09 and where are we starting in 2009-10.
- **Scott Dudley** sharing the Membership Recruitment success by the Rotary Club of South Whidbey Island.

### Register online at the District 5050 web site:

[http://www.clubrunner.ca/dprg/DxHome/\\_home.aspx?did=5050](http://www.clubrunner.ca/dprg/DxHome/_home.aspx?did=5050)

**Membership Matters:** Exerpts from the RI Zones 24 & 32 Newsletter  
Reference: [www.rotaryzones24-32.org](http://www.rotaryzones24-32.org)

### “Each Rotarian: Reach One, Keep One”

The RI Board of Directors adopted the new membership slogan at its June meeting. The slogan is similar to the successful slogan for our Rotary Foundation, “*Every Rotarian, Every Year*”. It emphasizes the need to focus on both recruitment and retention in membership efforts.

### Rotary International’s Final Focus Group Findings—2008

In 2008-09, Rotary International commissioned some non-Rotarian professional organizations to assess the perceptions of Rotary within two specific demographic groups: Professional women 30+ years of age and Professional men 30 - 45 years of age. Focus groups were conducted in Sydney, Johannesburg, and Buenos Aires. The results were presented by R.I. Membership Development Division Manager Donna McDonald to the Regional R.I. Membership Coordinators Training Seminar in February 2009.

When asked by the facilitator about Rotary International, most respondents did recall hearing about Rotary International, Rotary fundraising events or local Rotary clubs. There was a general positive impression that Rotary did good work. When asked about Rotary clubs the following functions were mentioned: fundraising to purchase hospital equipment, community activities with youth, shelter boxes for Burma, scholarships and exchange programs, water well set ups—and they compete with Lions. "It's a male bonding thing where businesses are advanced...but personally I don't connect with them..."

Overall, there is a significant lack of knowledge on what Rotary actually does, what Rotary accomplishes within the community or internationally, or how one would become involved or engaged with Rotary’s efforts. Local media often show pictures of Rotarians handing over checks rather than doing actual action-oriented projects. Today, individuals want to volunteer; they are interested in action and accomplishments.

**It cannot be emphasized enough that one significant point that must be acknowledged is there continues to be a strong perception that women are not allowed or welcomed into Rotary.**

*The Peace Arch Journal*



The monthly newsletter for District 5050

Larry Jubie  
Governor

The monthly publication is a service to District club officers and members. It is intended as a source of news and opinion from throughout the district. The mission is to promote communication, understanding, fellowship, and fun beyond club meetings, in a manner complementary to shared efforts at placing *Service Above Self*.

Please send articles and news in MS Word docs, with or without pictures, attached to emails and make some kind of reference to Rotary in the subject line. Note that the editor is not a professional journalist, and he appreciates conservation of space in order to meet the sender's needs and the editor's time.

It is requested that articles be submitted by the 15th of the month prior to the month of publication.

Address any and all information to *Peace Arch Journal* editor:

**Bob Knight** *Snohomish*  
PO Box 612, Snohomish, WA  
98291-0612

Phone: 360-568-5629 E-mail: RDKPDK@aol.com

Visit District 5050's Web site at:

[http://www.clubrunner.ca/dprg/DxHome/\\_home.aspx?did=5050](http://www.clubrunner.ca/dprg/DxHome/_home.aspx?did=5050)

**OKTOBERFEST 2009**

Sponsored by:  
The Rotary Club of Port Coquitlam Centennial

**BUFFET DINNER**

DOOR PRIZES SILENT AUCTION

Dance the Night Away with S-BAHN  
the Best Oktoberfest Band in BC

**Saturday September 26th**  
**6PM till Midnight \$50.00 per Person**  
Proceeds to help us end homelessness, and feed hungry kids

**LOCATION**

The Port Coquitlam Recreation Centre  
2150 Wilson Ave., Port Coquitlam, B.C.



**FOR THE TICKETS**

For information about this event or our club

Visit [www.porcorotary.ca](http://www.porcorotary.ca)

or

Telephone 604-618-23252

Club President Bob Frew, [bobfrew1@shaw.ca](mailto:bobfrew1@shaw.ca)

**Chilliwack Rotary Club Book Sale**  
**18-24 October 2009**

In 1985 Rod Cooper decided that the Chilliwack Rotary Club should hold a Book Sale to raise money for local and international projects. Two dozen years later Chilliwack Rotary Club Book Sale has become a significant community event, with approximately 100,000 books available for customers – and in 2008 it was the largest single fund raiser for the Club. The scale of community support goes far beyond donating the books, and includes the generous support of an impressively large number of community minded businesses.

What kind of books are at this Book Sale? Just about any you might find at a reputable used book store are collected, and organized into non-fiction (by category), as well as a wide variety of fictions –



(l to r) Ken Chisholm, Ian Meissner and Jack Ashdown

bestseller pocket-books, mysteries, war, western and science fiction, children's books, hard cover and oversize novels, as well as a small number of better quality sold in a special books section. The average price is reasonably modest, around \$2.00, with many books available for a dollar. This year the Book Sale has adopted a slogan that reflects the event, as well as the practice of many supporters – "Buy, Read, Return". Many books donated throughout the year are ones that have been purchased and read at previous sales. The Book Sale is an outstanding example of a 'green' event, allowing books to be reused by the Community again and again. See you there at this year's Book Sale!

BUY! READ! RETURN!

**ANNUAL ROTARY BOOK SALE**  
ROTARY CLUB OF CHILLIWACK

18 - 25 OCTOBER at CHILLIWACK MALL



*Article and photograph by Sharon Blaker*

### Chilliwack Biker's Visit to Langley

Report by DGE Wayne Wiebe

On July 23rd four members of the Chilliwack Rotary Bikers Make-Up Gang arrived for a meeting of the Langley club, and presented a certificate commemorating this as their second official club visit. The first trip was to Hope. What started as a fun idea to do make-ups has turned into an enjoyable inter-club socializing and learning experience, according to Stan Nickel. He and his fellow riders hope to do one club visit every month, and the third one is already planned.



Posing with their bikes outside the Coast Hotel and Conference Centre in Langley (viewed left to right) are Bob Adams, Stan Nickel, Al Kincaid, and Brian Selby, along with Gary Brackenbury, President of the Langley club. Bob, Stan and Al are members of the Chilliwack Rotary Club, and Brian is a member of the Chilliwack/Fraser club.

### Paul Harris Fellow Medallion

Information from Bill Robson, D5050 Rotary Foundation Chair



The medallion is no longer shipped with PHF recognition. The cost is US\$15.00. Order the medallion by calling 847-866-4600 or online at the address at the bottom of this section.

The order for the medal **requires** a PHF eligibility code found on the order form which us received with all Paul Harris Fellow certificates.

The PHF certificate and pin are still sent to all PHF recipients.

The gold-finish medallion etched with Paul Harris's profile can be worn or displayed with pride in recognition of achieving Paul Harris Fellow status.

Please make sure you clubs are aware of this. Clubs will need a minimum of 2 weeks to get the certificate and pin and another 2 weeks to get the medal. That is if all the paper work is correct. The medal is only being shipped from Evanston, it is not shipped from the TRF Canada office. The pin and certificate are sent from Evanston for US clubs and from London, Ontario for Canadian clubs.

[http://shop.rotary.org/catalog/advanced\\_search\\_result.php?keywords=PHF+Medallion&x=7&y=12](http://shop.rotary.org/catalog/advanced_search_result.php?keywords=PHF+Medallion&x=7&y=12).

### District Governor Jubie's Official Club Visits

#### September, 2009

2	Port Moody	Wednesday	7:15 a.m.
	Coquitlam		12:15 p.m.
3	Semiahmoo (White Rock)	Thursday	7:00 a.m.
	North Delta		12:10 p.m.
4	Lake Stevens/Granite Falls	Friday	7:30 a.m.
8	Bellingham Bay	Tuesday	Noon
9	Cloverdale	Wednesday	7:15 a.m.
	Haney		6:30 p.m.
23	San Juan Island	Wednesday	8:00 a.m.
24	Abbotsford - Matsqui	Thursday	6:00 p.m.
29	Meadow Ridge	Tuesday	Noon
	Surrey		6:15 p.m.
30	Langley Sunrise	Wednesday	7:00 a.m.
	Surrey-Fraser Heights		6:45 p.m.

#### October, 2009

1	Surrey-Guildford	Thursday	7:15 a.m.
	Port Coquitlam Centennial		4:15 p.m.
2	Aldergrove	Friday	7:10 a.m.
6	Burlington Mid-Day	Tuesday	Noon
7	Everett-Port Gardner	Wednesday	7:15 a.m.
	Monroe		Noon
8	Bellingham Sunrise	Thursday	7:00 a.m.
14	Langley Central	Wednesday	Dinner

### The Rotary Club of Langley Sunrise, BC Crabfest!



All District 5050 Rotarians and their friends are invited.

Saturday October 3, 2009  
Coast Hotel & Convention Centre  
20393 Fraser Hwy, Langley

Delicious fresh west coast **crab** from the Queen Charlottes, along with hand carved baron of beef

Doors open at 6:00 pm

Tickets are only \$60/person and are available online at [www.rotarylangley.com/crabfest](http://www.rotarylangley.com/crabfest)

For other information or tickets call 604-530-2305.

Proceeds will support:

- Langley Lodge - (Not for profit Complex Care Home for seniors)
- Gateway of Hope project - (Salvation Army Homeless Shelter)
- Other Rotary projects

**Door prizes, live & silent auctions, 50/50 draws, etc.**



**Editor's Note:** DG Larry Jubie requested that the PAJ include the following article by RI Zone 10B Coordinator/PDG Ray C. Chang. District 5050 clubs that may want to participate with assistance are requested to contact PDG Ray Chang by email at [ray@wahlee.com](mailto:ray@wahlee.com)

### Disastrous Typhoon Hit Taiwan

During August 7th and 8th, typhoon Morakot invaded Taiwan. Simply within the two days, she brought a record-breaking 2,000mm (80 inches) of heavy rain to southern Taiwan (the amount equivalent to the region's averaged cumulative annual rainfall) and created serious landslide and floods. It had not only destroyed more than 70 bridges and numerous roads, but also created serious mudslides which submerged Hsiaolin village of Kaohsiung County overnight and brought heavy losses to local native villages. So far, we already know that at least 400 people were buried alive, many houses were flushed away or brought down by sudden floods or covered by mud and stones up to two-story high. Farms or even the whole village were buried in a widespread of mud and cannot be found. The whole situation is horrifying and it's the most serious flood in Taiwan in half a century. You may have already seen all these scenes through media like CNN.



An area in southern Taiwan affected by mudslides after Typhoon Morakot. Photo provided by RI News (18 August 2009) by courtesy of AP Photo/Pool

Within the week after the disaster, people from all over Taiwan have devoted themselves in the rescue effort providing food, drinking water, clothes, and groceries to those in need. However, most of the disaster areas were located in the mountains and were isolated by the broken bridges and roads, seriously hindering the rescue efforts. Despite being faced with this kind of tough obstacles, our government and people are still continuing the rescue work.

Members of Taiwan Rotary Club immediately made donations or volunteered to participate in the rescue work when the disaster happened. Our 7 Rotary District Governors in Taiwan also initiated a unified donation activity. RI President John Kenny also made a call to RI Director Jackson Hsieh to express his deep concern over the situation when he stopped over in Hong Kong during his flight and learned about the disaster. The Shelter Box in our Rotary Club sent three representatives from UK to Taiwan and brought with them 100 sets of shelter boxes which could provide temporary shelter for 1,000 people. Our Rotarians in Taiwan also plan to build assembly houses for disaster families, especially for students who must move to other places to study after their local school was destroyed. With the upcoming back-to-school in early September, there are so many children from the impacted families who cannot afford to pay for their tuition, uniforms, or schoolbags. These children are in desperate need of our help. The only way to prevent their poverty in the future is to provide them better education now. Therefore, helping the children in the disaster area to be educated is one of the goals of our Rotary Club.

We sincerely hope that your esteemed Zone could exert the spirit of "The Future of Rotary is in your Hands" and join us to "Lend a Hand."

Reference: Address to download from Rotary International article:

[http://www.rotary.org/en/MediaAndNews/News/Pages/090818\\_news\\_taiwantyphoon.aspx](http://www.rotary.org/en/MediaAndNews/News/Pages/090818_news_taiwantyphoon.aspx)

### Saturday, October 24, 2009 World Polio Day

District Governor Larry Jubie has requested that every Rotary club in District 5050 start planning now to have a program on Polio during the week of October 24, 2009. He will be traveling with a team to Ethiopia for seven days (October 17 to 24) to participate with an NID (national immunization day).



Photo of an old iron lung that toured D5050 in 2003.



**Take up the challenge!  
Help End Polio Now.**

Visit the Rotary store and you can order products to

assist in getting the message out about Polio. The following address will take you to a list of Polio related topics.

[http://shop.rotary.org/catalog/advanced\\_search\\_result.php?keywords=polio&x=10&y=12](http://shop.rotary.org/catalog/advanced_search_result.php?keywords=polio&x=10&y=12)

The promotional pop-up boxes costs \$3.00 each.

### District Governor Goes to The Fair

Article and photographs by PAJ Editor Bob Knight

I did not know what I was about to experience when I asked DG Larry if I could ride with him for his August 18, 2009, official visit to the Rotary Club of Mount Baker in Lynden, WA. As we headed north from Marysville he told me that their meeting had been relocated because there was a fair going on and their Rotary building (located in the front of the Northwest Washington Fairground) was being used as a fund raiser by Young Life. We parked at a church where we met Mt. Baker Rotarians and were taken by school bus to the fair.



DG Larry and Linda boarding the bus

Karen (not a Rotarian) passed out fair tickets

We enjoyed BBQ's hamburgers



AG Lee Harmon introduced DG Larry Jubie

Linda & Larry, CP Greg Ebe & AG Lee

Back side of Rotary Building

During the meeting we learned about the contributions by members of the Rotary Club of Mount Baker in giving a facelift to a Linden School District Track (reported on an August 15, 2009, article in the Bellingham Herald Newspaper).

### A Visit to the Whatcom County North on August 20, 2009

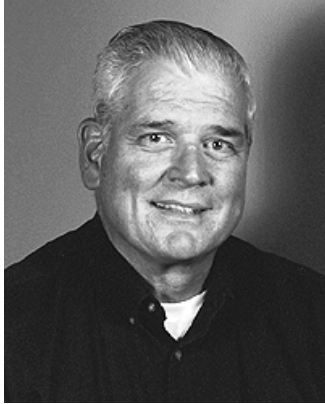
Article and photographs by Bob Knight

I had a hard time trying to find 3200 Northwest Ave., where I learned that three of the Rotary clubs in Bellingham meet. As a public service you will note that they meet behind North Side Restaurant and north of Albertsons.



The program was by a very enthusiastic Rosemary Vohs, Communications Dept., Western Washington University, on overcoming fears of public speaking.

PDG Mel Hollinger, CP Chuck Tull, AG Larry Pollett and Rosemary Vohs



**Past District Governor in Rotary International District 5050  
(2000-2001)**

**Jim Caldwell**

**June 23, 1928-July 1, 2009**

The following is courtesy of the Rotary Club of Bellingham (WA) from a report by Yvonne Cartwright in the July 13, 2009, edition of their newsletter, the Tattler. Additional notes by Bob Knight.

**The eulogy for Jim Caldwell was presented by Bob Morse**

Jim Caldwell was a giant of a man, and was husband to wife Anne, grandfather of five, and great grandfather to another five. Born and raised in Honolulu, Jim moved on to college at Stanford, where he received a degree in accounting.

Jim loved sports as a participant, a coach, and as a fan. He had an incredible memory of sports events, and stats. In 1950, when the San Francisco Giants arrived on the west coast, Willie Mays was one of the players and he became one of Jim's favorite sports heroes. Oddly enough several years later, in a restaurant where he and Anne were dining with **Larry Johansen** and his wife, Larry spotted Willie Mays at a nearby table. Jim calmly stood up and went over to the table, stating "you're Willie Mays". He then went on to tell the stunned baseball great that he had attended a particular game in which Willie's play had won the game. Jim also knew Willie's dinner companion, recognizing him as the commentator for the Giants. Having finished his objective, Jim turned around and went back to his table. He had said his piece.

Jim's business career included finance and accounting, and he moved to Bellingham to become the VP/Controller of a subsidiary of Del Monte. Eventually Jim was called back to company headquarters in San Francisco, but decided to stay in the town that he and Anne had made their home. Jim finished his career at Henefin Associates. He will always be remembered for the hard work he put into every job he ever held.

Jim carried this work ethic into the community as he served on many boards with full and active participation. He was elected to the City Council and it is believed he actually read the cumbersome reports provided to those politicians in order to fully discuss each issue with complete knowledge.

Jim lived up to the Rotarian standard of "never say no". He was President of our Club in 1980. He received the Community Service Award twice - in 1990 and 1997. In the year 2000, Jim served as District 5050 Governor. He was also a 5 time Paul Harris Fellow Award winner. Jim believed whole heartedly in the Four Way Test, and lived it by living a life that was full and rich. We will all miss him and his gentle way.

Some additional notes based on the District Directory for 2000-2001:

Jim Caldwell was born, the second of twins, in Honolulu in June 1928. He spoke of having vivid memories of the Japanese attack on Pearl Harbor on December 7, 1941. He also remembered Waikiki Beach when there were only three hotels - the Royal Hawaiian, Moana and Halekulani.



He was instrumental in starting two new Rotary clubs in the Bellingham area and served six district governors either as their governor's representative or as assistant district governor. Jim was honored with Paul Harris Fellowship awards, and he and Anne are benefactors of the Rotary Foundation. In 1990-91 and again in 1997-98 Jim was the recipient of his club's annual Club Service Award.

Jim married Anne Everett on January 17, 1959, and they recently celebrated their 50th wedding anniversary. Anne was born and raised in Oakland, California. She attended the University of Redlands and the University of California at Berkeley where she earned her degree in Decorative Arts.

**PDG Jim & Anne Caldwell**      Jim and Anne have five children: Marci, Julie, Ken, Bill and Bruce, and five grandchildren.





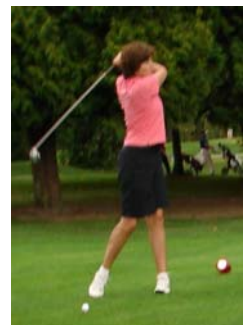
Marjean Penny & District Treasurer Jodi Widmann

### Rotary District 5050's Golfun 2009



Raising money for the Polio Challenge

At 1:00 P.M. on August 21, 2009, 107 golfers headed for an delightful afternoon at the Surrey Golf Course.



It takes practical skills and knowledge of golf: with careful approach, fearsome attack and intense follow through!



Russ Dewolfe, DGN Jane Helten Rick Brown and Lauren Pool



Andy Briscoe & Dave Sliman (1st & 2nd into putting hole)



Tim Villhauer, Rocky Richardson, Ken Richardson & Greg Thulin



Terry Jones, Patrick Hahn, Loma Rutherford & Jack Boyce



Annual Foundation Golf Tournament Trophy (l-r) Dave Sliman, Scott Simpson, DG Larry Jubie, Tim Geddes & Andy Briscoe.



District Rotarians and friends enjoyed the evening banquet while Golfun 2009 Chair & DGE Wayne Wiebe announced the winners.

**Rotary District 5050 Statistics**

Prepared by District Secretary Dennis Radcliff

**Monthly Attendance Report for July, 2009**

Club Name	Members as of June, 2009	New Members This Month	Terminations This Month	Total Members This Month	Number of Meetings This Month	Gain/Loss This Month	YTD Gain/Loss	Attendance Percentage
Abbotsford	70	0	0	70	4	0	0	65.00 %
Abbotsford- Matsqui	25	0	1	24	5	-1	-1	58.00 %
Abbotsford-Sumas	26	0	3	23	5	-3	-3	82.61 %
Aldergrove	29	0	0	29	5	0	0	65.00 %
Anacortes	66	2	1	67	5	1	1	69.34 %
Arlington	69	0	1	68	5	-1	-1	71.00 %
Bellingham	174	1	1	174	0	0	0	68.29 %
Bellingham Bay	122	0	3	119	4	-3	-3	65.57 %
Bellingham Sunrise	45	0	0	45	5	0	0	56.00 %
Burlington	70	4	3	72	4	1	2	57.39 %
Burlington Mid-Day	25	0	0	25	0	0	0	85.00 %
Chilliwack	195	5	8	192	5	-3	-3	82.20 %
Chilliwack Mt. Cheam	61	0	0	61	5	0	0	66.44 %
Chilliwack/Fraser	67	0	0	0	0	0	-67	0.00 %
Cloverdale	23	1	0	24	4	1	1	50.00 %
Coquitlam	46	0	0	42	4	0	-4	69.12 %
Coquitlam Sunrise	29	0	0	29	0	0	0	65.00 %
Everett	175	2	0	177	4	2	2	61.93 %
Everett-Port Gardner	45	0	0	45	5	0	0	72.00 %
Fidalgo Island	42	1	1	42	4	0	0	79.18 %
Haney	43	1	1	43	4	0	0	60.00 %
Hope	17	0	0	17	5	0	0	76.47 %
LaConner Lake	48	0	0	48	4	0	0	62.16 %
Stevens/Granite Fall	36	2	2	36	4	0	0	61.00 %
Langley	31	0	0	0	0	0	-31	0.00 %
Langley Central	76	0	2	74	4	-2	-2	56.76 %
Langley Sunrise	22	1	2	21	4	-1	-1	84.50 %
Marysville	67	2	1	68	5	1	1	70.00 %
Marysville Sunrise	19	1	0	18	5	1	-1	78.89 %
Meadow Ridge	48	0	0	48	48	0	0	56.25 %
Mission Middy	25	3	3	25	4	0	0	65.93 %
Mission Morning	31	1	0	32	4	1	1	81.25 %

Continued from page 10 **Membership & Attendance Report for JULY, 2009**

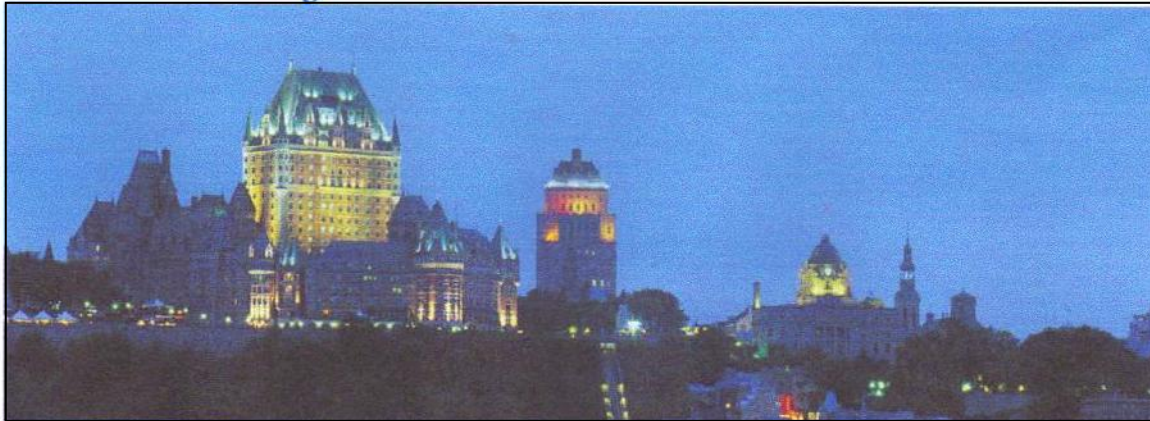
Monroe	26	0	3	23	4	-3	-3	100.00 %
Mount Baker Rotary	54	4	0	58	4	4	4	85.00 %
Mount Vernon	50	1	0	51	4	1	1	62.29 %
North Delta	45	0	0	45	5	0	0	46.82 %
North Whidbey Island Sunr	32	0	0	32	5	0	0	76.00 %
Oak Harbor	90	1	0	91	3	1	1	54.00 %
Port Coquitlam Centennial	28	1	7	22	5	-6	-6	89.00 %
Port Moody	44	0	4	40	5	-4	-4	74.15 %
San Juan Island	24	1	0	24	5	1	0	75.00 %
Sedro Woolley	102	0	2	99	5	-2	-3	51.97 %
Semiahmoo (White Rock)	58	1	0	59	5	1	1	56.00 %
Skagit (Mount Vernon)	72	0	4	68	5	-4	-4	67.00 %
Snohomish	18	0	1	17	4	-1	-1	92.00 %
South Everett/Mukilteo	61	0	0	61	5	0	0	65.00 %
South Whidbey Island	73	2	0	75	4	2	2	66.90 %
Stanwood/Camano Island	40	1	0	41	5	1	1	59.00 %
Surrey	20	0	2	17	4	-2	-3	0.00 %
Surrey-Fraser Heights	20	3	2	20	3	1	0	64.41 %
Surrey-Guildford	26	3	6	23	4	-3	-3	85.00 %
Whatcom County North	54	1	1	60	5	0	6	81.72 %
White Rock	64	0	0	64	4	0	0	75.00 %
White Rock Millennium	18	3	0	21	4	3	3	84.21 %
White Rock Peninsula	17	1	2	16	4	-1	-1	67.21 %
White Rock-Peace Arch	33	0	0	33	4	0	0	66.20 %
<b>Totals</b>	<b>2936</b>	<b>50</b>	<b>67</b>	<b>2818</b>	<b>269</b>	<b>-17</b>	<b>-118</b>	
<b>Average attendance percentage</b>								<b>67.31 %</b>

**Note:** Number of meetings field may not be correct for months prior to September 2004 when this field was added.

### **Highlights for the Month of July, 2009**

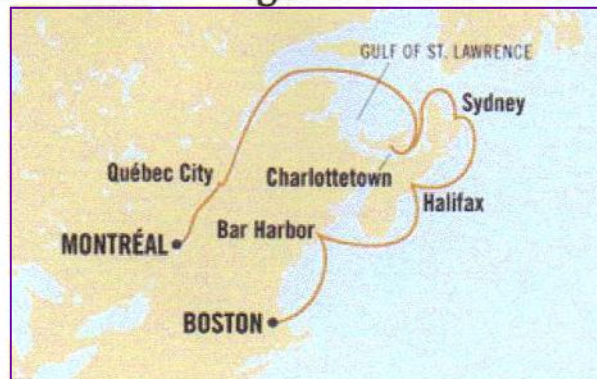
- Total number of members in District 5050 as of July 31, 2009 was 2,918 (versus 2,966 as of July 31, 2008).
- Between July 2008 & 2009: Inducted 50 new members and terminated 67 members.
- Average Attendance for the District for the month of July, 2009, was 67.31 % (versus average attendance of 69.74 for July, 2008).

## *Post Rotary International Convention Cruise*



*Depart from Montreal on June 26, 2010*

**7 Day Canada & New England aboard the Ms Maasdam**



Visit Quebec, scenic cruising on the St. Lawrence River, Charlottetown Prince Edward Island, Sydney Nova Scotia, Halifax Nova Scotia, Bar Harbor Maine and end in Boston Massachusetts.

With mile after mile of ruggedly beautiful coastline and waters whose legendary bounty gave rise to generations of seafarers, this is a truly remarkable part of the world. You can trace the path of America's independence, dine on Maine lobster at the source and sample the delights of French-flavored Montreal or Quebec City.

**Group rates start at US\$999 per person**

A deposit of \$175 per person will hold your reservation.

**For information contact PDG Kathy De Tuerk at 425-258-4455 or  
by email [Kzdt@aol.com](mailto:Kzdt@aol.com)**

**Travel with other District 5050 Rotarians. Deposit is due by December 15, 2009.**

Information on the Ms Massdam: <http://www.cruiseweb.com/HAL-CANADA.HTM>