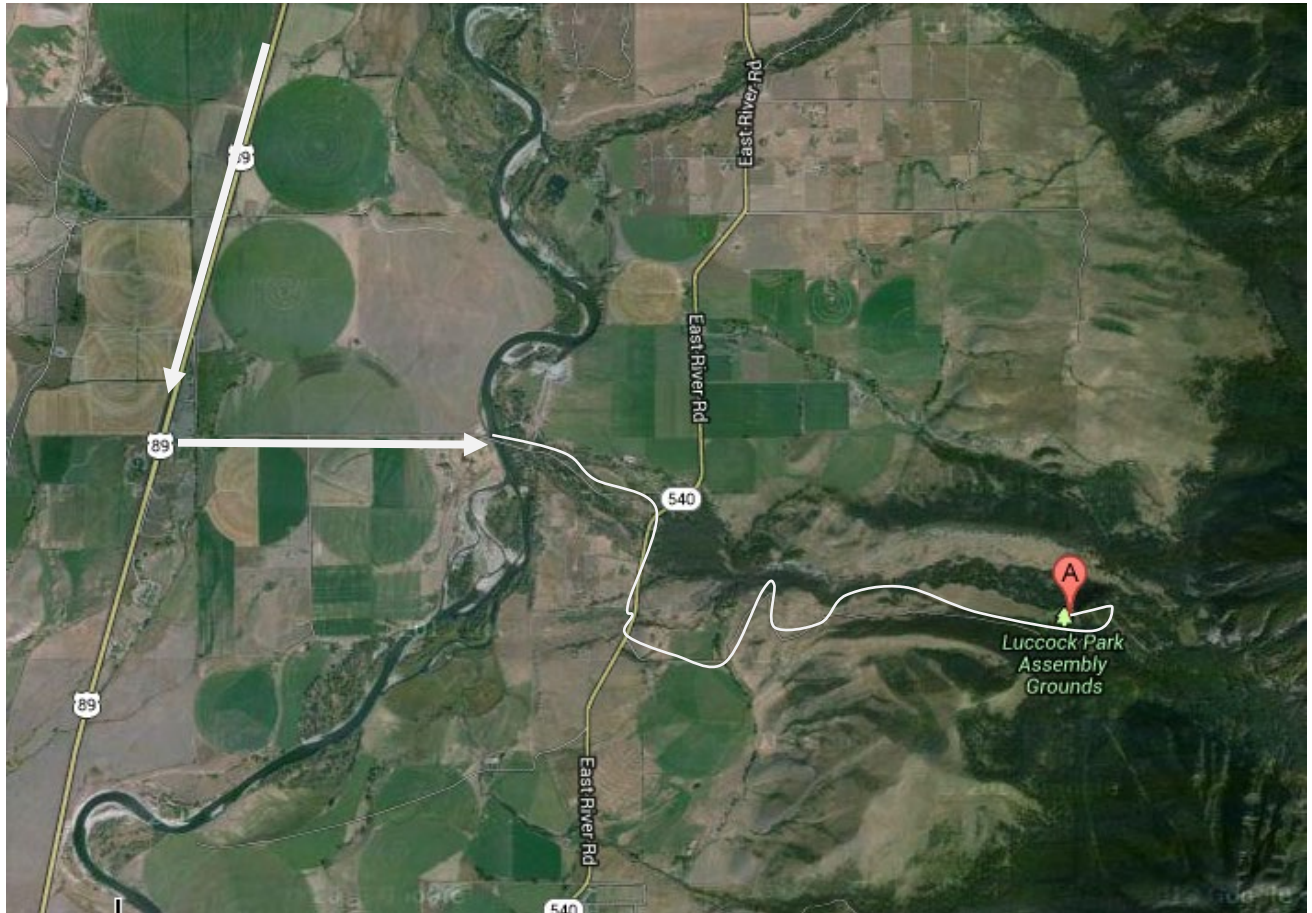


In Livingston, Montana, turn south on highway 89 and go about 5 miles. Turn left on East River Road. There is a Fishing Access sign; but, no left turn lane. Follow East River road (highway 540) through and past Pine Creek about ½ mile. Look for Luccock Camp sign. Turn left on to Luccock road. NOTE: the road to camp is paved, but only one lane with turnouts. Be very careful.



OR, after turning south on highway 89, go about 11 miles. Turn left at the KOA campground sign (there is a left turn lane). Go the Pine Creek (road dead ends into Hwy 540) and turn right on to East River Road (Hwy 540) and go about .7 miles. Turn left onto Luccock Park Road (Pine Creek Campground sign and Luccock Park signs are there). Camp is about 2.6 miles. Road is paved but narrow. Be alert for on-coming traffic.

Map updated in December 2019.