



**Welcome to
Foundation Hoop-La
Celebrating District 6040 MVP's**

November 4, 2023

Welcome

From
**District Governor
Randy Steinman**



Dear Friends and Fellow Rotarians,

Welcome to the Foundation Hoop-La!

Thank you for your support of this event and the Rotary Foundation. Your giving is helping to support projects in our communities and throughout the world.

Tonight, you will get to see firsthand the amazing work Rotarians are doing to “Create Hope in the World” with their service projects to promote peace, fight disease, provide clean water, support education and local economies, help mothers and children, and protect our environment.

I would like to encourage you to open your hearts and your minds and use their stories to create your own projects or to join them in their efforts. Finally, I’d also like to encourage you to have ***fun!***

This is a celebration with some of the most amazing people you have ever met.

Enjoy HOOP-La and thank you for your service.

Yours in Rotary Service,

Randy Steinman
2023-24 District Governor
Rotary District 6040

Tonight's Agenda

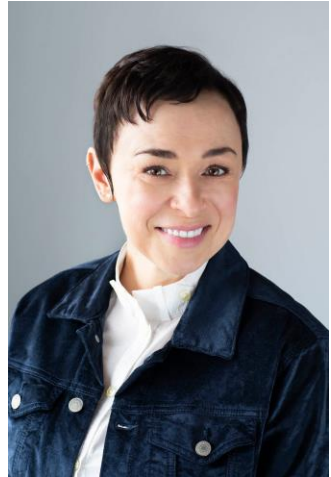
Cocktails and Games/Activities	6:00-7:00 pm
Buffet Dinner	7:00 pm
Program Begins	7:30 pm
Keynote Conversation	Monika Lozinska & Rich Linden
Silent Auction Closes	8:30 pm
Live Auction and Raffle & Game Results Announcement	9:45pm
Self-Pay Bars Closes	10:00pm

Tonight's Special Guest

Monika Lozinska

Rotary International
Staff Photographer

Monika Lozinska is a native of Krakow, Poland, and has been Rotary International Staff Photographer since 2005. At age 14, Monika received her first camera from her father, a photo hobbyist, who sparked her lifelong interest in photography. She holds a BFA from The Pennsylvania State University in fine art photography and storytelling and has been serving on the board of the American Society of Media Photographers-Chicago Midwest Chapter. Monika takes pride in connecting with her subjects and capturing genuine moments in people's lives, whether through Rotary, her professional freelance work, other personal projects. When not covering conventions, assemblies, and other events, Monika's favorite Rotary work is in producing portraits and multimedia pieces that help Rotarians tell the story of their inspiring projects. Monika photographs so she can share her subject's stories with others yet often finds her own story in theirs—the journey is mutual.



Foundation Hoop-La Rotary Clubs

Hall of Fame (\$5,000)

Kansas City #13
Kansas City Plaza (2X)

All Star (\$1,500)

Independence
Kirksville 1000 Hills

Champion (\$2,500)

Lawson
Lee's Summit
Lee's Summit Sunrise Sunset
Liberty
Richmond
St. Joseph East
Trenton
Waldo Brookside

Super Fan (\$500)

Kansas City South
Parkville

Raffle Ticket Sponsor

Bill Moran, Kansas City Plaza

Community Sponsors: Champions:



BlueScope
Properties Group

All Star:



Super Fan:



Donors & Members 2022-23

(As of June 30, 2023)

Paul Harris Society

Individuals who contribute \$1,000 or more to the Annual Fund, PolioPlus, or an approved Foundation Named after Rotary's founder, the Paul Harris Society recognizes Rotarians who commit to contribute \$1,000 or more each year to the Annual Fund, PolioPlus, or an approved Rotary Foundation grant. Cumulatively, District 6040 Paul Harris Society members contribute over \$89,000/year to The Rotary Foundation.

Jan Armstrong, Kansas City
Debbie Ann Atwood, Lee's Summit
Michael Baumgartner, Maryville
Duane Benton, Kansas City
Sandra Benton, Kansas City
Carl Bolte, Jr. Kansas City
Ruth Bowers, Kirksville
Jane Brown, Kansas City Plaza
Carl Chinnery, Lee's Summit
Susan Coffman, Lee's Summit
John Coleman, Lee's Summit
Ralph Cupelli, Kirksville
Jeff Deatherage, Kansas City Plaza
Peter Detweiler, Kirksville
Rex DeVilbiss, Lee's Summit
Ryan Dowell, St. Joseph East
Jon Ellis, Lee's Summit
Ronald Finke, Independence
Ralph Foiles, Kansas City Plaza
Daniel Gabbert, Lee's Summit
Allen Garner, Independence
John Gill, Richmond
Donald Gladhart, St. Joseph
Gregory Gordon, Kirksville
Twila Gregg, Blue Springs
Don Gregory, Gladstone
Fred Hahn, Independence
Dan Hall, Lee's Summit Downtown
Kenny Harris, Blue Springs
Reed Hastings, Liberty
Peter Ho, Kansas City
Marc Horner, Kansas City
Allen Jenks, Kansas City Plaza
Ray Klinginsmith, Kirksville
Patricia Knauss, Liberty
Margaret Langdon, Kansas City International
Kimberly LeSage, Raytown
Larry Lunsford, Kansas City Plaza
Julie McCoy, Chillicothe
Rolfe McCoy, Chillicothe

Erik McGuire, St. Joseph East
Bob Merrigan, Kansas City Plaza
Linda Mills, Kansas City
Leslie Mitkos, Higginsville
William Moran, Kansas City Plaza
Rosalie Newkirk, Lee's Summit Sunrise
Joel Pratt, Unionville
Dustin Prokish, Liberty
Gregory Prymak, Parkville
Terry Putney, Kansas City Plaza
Don Purkapile, Trenton
Jeffrey Romine, Kirksville
Marilyn Romine, Kirksville Thousand Hills
Dayton Runkle, Lee's Summit
Roger Samuel, Kansas City Plaza
Dan Shepherd, Huntsville
Melynn J. Sight, Kansas City Plaza
James Simon, Macon County
Rick Simon, KCI Airport
Louis Smither, Weston
Michele Stafford, Unionville
Randy Steinman, Kansas City Plaza
DeeAnn Stock, Raytown
Jodi Sundaram, Liberty
Rody Taylor, Lee's Summit
Paul Temme, Kansas City Plaza
Guylaine Thevenot, St. Joseph South Side
Martial Thevenot, St. Joseph South Side
Elizabeth Thomas, Kansas City Plaza
William Drue Thomas, Kansas City Plaza
Frederick Paul Tucker, Macon County
Elizabeth Usovicz, Kansas City Plaza
Cassy Venters, Kansas City Plaza
Tracy Vincent, Macon County
Jay Way, Cameron
Randy Weeda, Lee's Summit
Dan Wilford, Trenton
Thomas Woodward, Eastern Independence
Susan Wray, Eastern Independence
****=New Member**

District 6040 Major Donors

Individuals or couples who contribute a combined outright gift(s) to The Rotary Foundation at a cumulative level of at least \$10,000

Level 1 (\$10,000)

Frank H. Baldwin + & Helen Baldwin +,
Kirksville

Michael Baumgartner, Maryville**

Sandra Snyder Benton, Kansas City

William Duane Benton, Kansas City

Jack Briggs, Cameron

Ruth Bowers, Kirksville

Kirby O. Brooner, St. Joseph East

Jane Pansing Brown, Kansas City Plaza

Robert L. Brown & Donna J. Brown,
Higginville

Simon B. Buckner, Kansas City-Plaza

Richard E. Burnett + & Doris Burnett +,
Kansas City

Thomas D. Cairns, Jr. +, Independence

Samuel C. Chapman +, Liberty

Byron Constance, Independence

Bradley M Cox & Sandy Cox, Lee's Summit

David A. Cross, Lee's Summit

Robert W. Crouch, St. Joseph**

Ralph P. Cupelli & Suzanne L. Cupelli,
Kirksville

Jeff Deatherage & Lisa Deatherage,
Kansas City Plaza

Dick N. DeShon, St. Joseph+

Phyllis Dieckmann, Higginville

Edmond D. Dixon, Lawson

Ryan A. Dowell, St. Joseph East

Jon Ellis, Lee's Summit**

William C. Esry, Independence**

Gregory C. Finke, Independence

Ronald C. Finke and Karen R. Finke,
Independence

Daniel T Gabbert, Lee's Summit

B. Allen Garner & Beth Garner,
Independence

Mark Gerber +, Independence West

Thomas Earl Gibbens & Donna L. Gibbens,
Raytown

Ray Gill +, Richmond

Gregory Gordon, Kirksville**

Twila V. Gregg, Blue Springs

Donald W. Gregory, Gladstone

Dan W. Hall, Lee's Summit**

Kenneth E. Harris, Blue Springs

C. Phillip Hoffman, Trenton

Denise Holt, Kansas City-Plaza

Marc A. Horner & Barbara J. Horner,
Kansas City

James Ingle, St. Joseph

Jonathan McBride Kemper, Kansas City

John W Kimak & Nancy Kimak,

Independence

Patricia L. Knauss, Liberty**

Henry Leonard, Kansas City** +

Kim LeSage & Todd LeSage, Raytown

Edmund Roman Lipowicz, III, Lee's Summit

Rolf C. McCoy and Julie M. McCoy,

Chillicothe

William E. McGovney + and Mildred E.

McGovney+, Kansas City South

Ted Meyer, Blue Springs

Harold D. Middleton + and Peggy G.

Middleton +, Schuyler County

John B. Miller & Mary Ann Miller,
Kansas City

Linda Mills, Kansas City

James P. Mitchum, Kansas City-Plaza

Gary P Morgan, Waldo Brookside

William Morgan, Kansas City Plaza**

Walter L. Mulvania +, Rock Port

Morton Nelson, St. Joseph South Side

William M. Nofsinger + and Bonnie H.

Nofsinger, Kansas City

Michael G. Pedrick + and Betty Pedrick +,

Kansas City & Sand Springs, (OK)

Joel Pratt, Unionville **

Gregory Prymak, Parkville**

Don Purkapile, Trenton

Terrence E. Putney & Mary C. Putney,
Kansas City Plaza

Richard O. Retrum+ & Carol Ann Retrum,

Kansas City

Thomas Richards, Independence

Nelson D. Runkle, Lee's Summit

Roger Samuel, Kansas City Plaza

Ronald Searcy, Albany **

Donald J. Seifert, Kansas City

Lyle Shaver, Blue Springs

Melynn J Sight & Dan E Sight, Kansas City
Plaza and Overland Park, KS

John Richard (Rick) Simon & Mary L. Simon, Kansas City International
Brad Speaks, Independence
Robert L. Stanton + & Doris Ann Stanton, Rock Port
Randy Steinman, Kansas City Plaza
DeeAnn & Kenneth Stock, Raytown
Steve Lewis Sturm, Independence
Catherine M. Svetecic, Liberty
H. S. Symes, Jr. & Mabel A. Symes, St. Joseph East
Guylaine Thevenot, St. Joseph South Side**
Martial Thevenot, St. Joseph South Side
Donna Thomas, Macon County **
Luther H. Thompson, Rock Port +
Ron Trachsel, Kansas City
Frederick Tucker, Macon County **
William A. Turnage, Gladstone
Karen Van Sickle, St. Joseph South Side
Tracy Vincent, Macon County **
Dan J. Wilford, Trenton
Shirley I. Wurth & David W. Wurth, Raytown
Paul J. Zimmerman, Rock Port

Level 2 (\$25,000)

Gordon T. Beaham, III, Kansas City
Colin C. Campbell + & Bethane Regan-Campbell, Parkville & Smithville
Heywood H. Davis, Kansas City
Ronald Gaber & Elsie J Gaber, Kirksville & Kirksville-Thousand Hills
John Osborn Gooch + & Beth Hammond Gooch, Lee's Summit & Liberty**
Robert E. Hertzog & Betty L. Hertzog, Lee's Summit

Ray Klingensmith & Judith Klingensmith, Kirksville
Baltazara Go Lotuaco & Denys B. Collins, South Platte
Larry A. Lunsford & Jill Lunsford, Kansas City-Plaza
Erik McGuire, St Joseph East*
Leslie John Mitkos, Jr. & Yvonne M. Mitkos, Higginsville & Litchfield (IL)
Jeffery and Marilyn Romine, Kirksville & Kirksville 1000 Hills**
Constance Saxton, St Joseph **
DeLancey and Emily Smith, Kansas City **
James and Ann Waterman, Liberty **
John Way, Cameron **

Level 3 (\$50,000)

Carl E. Bolte, Jr., Kansas City
Gordon L Hadden & Constance J. Hadden+, Liberty
Michael L. Hobbs and Lucile Hobbs, Parkville & South Platte
John T. Schott, Sr. + and Lois A. Schott+, Parkville
Donald O. Smith + & Katherine H. Smith, Kansas City

Level 4 (\$100,000)

Janet E. Armstrong, Kansas City
Sally M. Bibb & Robert A. Bibb, Kansas City**
Don Kahan, Lee's Summit +
Leslie L. Galbraith +, Raytown
John R. Gill & Melanie A. Gill, Richmond
David T. B. Norton+ and Elizabeth A. Norton, Kansas City
+Deceased

**New Member in 2022-23

District 6040 Arch Klumph Society Members

Donors whose cumulative gifts total \$250,000 or more. Their photos are permanently displayed in the Arch C. Klumph Society Gallery at Rotary International headquarters in Evanston, Illinois.

Joanne and Gene Cable, Independence**
Carl L. Chinnery and Jean Chinnery,
Chair's Circle, Lee's Summit
Robert E. Dunshee + and Winifred C.
Dunshee+, Trustees Circle, Maryville
Frederick William Hahn, Jr. and Marjorie J.
Hahn, Trustees Circle, Independence
Edwin+ and Margareta Kimbrough
Edwin L. Kimbrough + and Margarete *
Kimbrough +, Chair's Circle, Huntsville
Goldie M. Daniel N. Shepherd and Janet
Kay Shepherd, Trustees Circle, Huntsville**

Jerry W. Venters and Cassy Dierking
Venters, Trustees Circle, Kansas City-Plaza
& Lander, WY.
Wilford and Jerry L. Wilford, Foundation
Circle, Chillicothe, MO & Highland Ranch,
CO

+ Deceased **Indicates New Member

District 6040 Bequest Society Members

Donors are individuals or couples who make a commitment to The Rotary Foundation in their estate plans at the level of at least \$10,000.

Bequest Society Level 1

Kirby K. Asplund, Lee's Summit
Francis E. Bales, Kansas City-Plaza
Eddie Batts, Parkville
Richard Erik Beyer, Kansas City
Jane Blackburn, Unionville
Steven V. Bleish, Parkville
Donald J. Breckon, Parkville
Martin Brooks and Brianna Brooks, Lee's
Summit Downtown
Robert G. Burns, Blue Springs
Phil Burress, Gladstone
Michael Cannady, Lee's Summit Downtown
Richard D. Conn, Gladstone
William A. Cosgrove, Jr. and Debbie
Cosgrove, Blue Springs
Ryan Dowell, St. Joseph East
Charles M. Foudree and Colleen Foudree,
Independence
Paige Brooks Fowler, Waldo Brookside
Daniel Todd Gabbert, Lee's Summit,
David Gale, Lee's Summit Sunrise
B. Allen Garner and Beth Garner,
Independence
Donald Gladhart, St. Joseph

Donald W. Gregory, Gladstone
Frank Grimshaw and Teresa L. Grimshaw,
Macon County

Sherri Hahn, Kansas City
Dan W. Hall, Lee's Summit Downtown
Kathleen C. Hogarty, Kansas City-Plaza
Allen Jenks, Kansas City-Plaza, MO
Stephen C. Johnston, Kansas City-Plaza,
MO
Trisha Nicole Kennedy, Blue Springs
Patricia Kurtzeman, Kirksville-Thousand
Hills
Bob Latz, Kansas City-Plaza
Kim LeSage and Todd M. LeSage,
Raytown
Jim Lloyd, Kansas City-Plaza
Kent D. Mayfield, Parkville
Barry S. McCullough and Anita McCullough,
Gladstone
Howard H. Mick, Kansas City
James Hammond Porter and Molly W.
Porter, Kansas City
Joel Pratt, Unionville
David P. Rainey, Kansas City International

Richard O. Retrum+ and Carol Ann Retrum,
Kansas City
Jeffrey M. Romine and Marilyn S. Romine,
Kirksville and Kirksville-Thousand Hills
Clifford Schuette, Gladstone
Larry Shelman, Lee's Summit
Dennis Smith, Lee's Summit
Richard W. Steele, Kirksville-Thousand Hills
H. S. Symes, Jr. and Mabel A. Symes, St.
Joseph East
Martial Thevenot, St. Joseph South Side
Cynthia J. Thompson and S.F. Bud
Thompson, Kirksville-Thousand Hills
Ron Trachsel, Kansas City, MO
Larry Vawter, Parkville
Jean Warren, St. Joseph East
Scott Weaver, Kansas City-Plaza
Chillicothe & Highlands Ranch, CO.
Rick Williams, Parkville
Susan Wray, Eastern Independence

Bequest Society Level 2

Ruth Bowers, Kirksville
Ralph Paul Cupelli and Suzanne L.
Cupelli+, Kirksville
Jeff Deatherage and Lisa Deatherage,
Kansas City-Plaza
Ronald C. Finke and Karen R. Finke,
Independence
John Osborn Gooch+ and Beth Hammond
Gooch, Lee's Summit & Liberty
Robert E. Hertzog and Betty L. Hertzog+,
Lee's Summit
Marc A. Horner and Barbara J. Horner,
Kansas City
John W Kimak and Nancy Kimak,
Independence
Terrance E. Putney and Mary C. Putney,
Kansas City-Plaza & Shawnee Mission (KS)
Roger Samuel, Kansas City-Plaza
Elizabeth Usovicz and Dean Mathewson,
Kansas City Plaza**

Bequest Society Level 3

Denise Holt, Kansas City-Plaza
Rolfe C. McCoy and Julie M. McCoy,
Chillicothe
John Rick Simon and Mary L. Simon,
Kansas City International
William Drue Thomas, Jr. and Liz Thomas,
Kansas City-Plaza

Bequest Society Level 4

Karyn Eppler, Kansas City-Plaza
Thomas Earl Gibbens and Donna L.
Gibbens, Raytown
John R. Gill and Melanie A. Gill, Richmond
Gordon L Hadden and Constance J.
Hadden+, Liberty
Frederick William Hahn, Jr. and Marjorie J.
Hahn, Independence
Ray Klinginsmith and Judith Klinginsmith +,
Kirksville
Larry A. Lunsford and Jill Lunsford, Kansas
City-Plaza
Thomas Wesley Van Dyke and Sharon E.
Van Dyke+, Kansas City

Bequest Society Level 5

Janet E. Armstrong, Kansas City

Legacy Society Level 1

Cassy Dierking Venters and Jerry W.
Venters, Kansas City-Plaza & Lander, WY.

Legacy Society Level 3

Daniel N. Shepherd and Janet Kay
Shepherd, Huntsville

+ Deceased

100% Paul Harris Fellow Clubs

Clubs in which all dues-paying members are Paul Harris Fellows. This is a one-time recognition.

Lee's Summit 2021-2022

Macon County 2022-2023

Lawson 2021-2022

Trenton 2020-2021

Chillicothe 2018-19

Kansas City-Plaza 2014-15

Kirksville Thousand Hills 2010-11

Lawson 2021-2023

Milan 2016-17

Parkville 1997-98

Richmond 2014-15

St. Joseph 2011-12

St. Joseph South Side 2016-17

Tarkio 2008-09

Star Clubs 2022-23

Congratulations to the following **Star Clubs** that each contributed an average of \$144 or more per member to the Annual Fund/SHARE of The Rotary Foundation.

Level 1 (\$144-199 per capita)

Chillicothe

Gladstone

Lee's Summit

Parkville

Level 3 (\$300-399 per capita)

Kansas City Plaza

St Joseph East

Level 2 (\$200-299 per capita)

Eastern Independence

Kirksville

Liberty

Raytown

Trenton

Weston

Highest Per Capita Giving Clubs

Kansas City Plaza - \$393.23

St Joseph East \$322.31

Weston \$285.89

End Polio Now 2022-23 Awards

In 2020-21, the Rotary District Goal for club Polio Giving was \$1500. The following clubs met club giving goals and per capita giving goals to Polio Plus that will help us achieve The Rotary Foundation's number one goal – The Eradication of Polio.

Level 1 - \$1500 per club

Bethany
Chillicothe
Eastern Independence
Huntsville
Independence
Kanss City
Kansas City Plaza
Kirksville
Lee's Summit
Liberty
Macon County
Odessa
Raytown
Smithville
St. Joseph East
St Joseph Southside
Waldo Brookside
Weston

Level 2 - \$50 per capita

Bethany
Eastern Independence
Kansas City Plaza
Kirksville
Odessa
Raytown
Weston

Level 3 - \$100 per capita

Huntsville
Macon County
Smithville

Highest Per Capita Giving Clubs

Macon County \$209.30
Huntsville \$168.67
Smithville \$110.00

TRF Giving Banner 2022-23

Clubs who had 100% participation in TRF Giving (any fund of The Rotary Foundation) and achieved \$100 or more in average TRF Giving.

East Independence Gladstone Princeton Raytown Weston

Every Rotarian Every Year Banner 2022-23

Clubs who had 100% participation in EREY and achieved US \$100 or more in Annual Fund Per Capita Giving

Gladstone Princeton Weston

Klinginsmith Cup

The Klinginsmith Cup was started in 2009-10 in honor of our Rotary International President, Ray Klinginsmith (Kirksville Rotary Club) who served as RI President in 2010-11. The award is presented to the club that meets two criteria that are important to President Ray:

1. Receiving the Presidential Citation for the Rotary year and
2. Making the highest per capita contribution to The Rotary Foundation Annual Fund/SHARE during the Rotary Year.

Both criteria must be met with the net result that the club receiving the trophy is not always the highest giving club.

2021-22	Waldo Brookside	\$314.04
2020-21	St. Joseph South Side	\$324.36
2019-20	Kansas City International	\$376.72
2018-19	Eastern Independence	\$475.00
2017-18	Kansas City Plaza	\$441.04
2016-17	Kansas City Plaza	\$999.53
2015-16	Kansas City International	\$244.76
2014-15	Kansas City Plaza	\$609.85
2013-14	Kansas City Plaza	\$355.76
2012-13	Kansas City Plaza	\$278.79
2011-12	Lee's Summit Sunrise	\$383.12
2010-11	Kirksville Thousand Hills	\$858.29
2009-10	Kansas City Plaza	\$411.26

Financial Information

D6040 Annual Fund/SHARE Per Capita Giving History

2022-2023	\$117.71
2021-2022	\$204.48
2020-2021	\$135.22
2019-2020	\$106.92
2018-2019	\$140.59
2017-2018	\$118.62
2016-2017	\$558.69
2015-2016	\$110.89
2014-2015	\$116.53
2013-2014	\$98.52
2012-2013	\$81.82
2011-2012	\$75.49
2010-2011	\$95.10
2009-2010	\$85.58

D6040 Five-Year Summary

Rotary Year	Number of Members	Annual Fund	Polio Plus	Other Restricted	Endowment Fund	Total
2022-23	2037	239,784	58,658	4,487	501,563	804,492
2021-22	2139	437,384	52,401	4,300	225,833	719,918
2020-21	2262	305,858	54,972	38,905	35,301	435,036
2019-20	2355	249,678.58	98,501	78,628.19	0	426,807.77
2018-19	2365	332,498.74	73,842.91	21,225.55	18,753.66	446,320.86

District 6040 Foundation Committee Chairs 2022-23

District Rotary Foundation Chair	Marc Horner
Annual Fund Chair	Jodi Sundaram
Endowment Fund Subcommittee Chair	Kenny Harris
Paul Harris Society Subcommittee Chair	Kenny Harris
Polio Eradication Subcommittee Chairs	Kent Shelman Lynn McClure
District Grant Chair	Beth Franklin
Global Grants Chair	Pat Knauss
Scholarship Subcommittee Chair	Brad Kleindl
Foundation Stewardship Committee Chair	Kenny Harris
Foundation Treasurer	Shelly Hulet

District 6040 Officers 2022-23

Randy Steinman District Governor	rsteinman3@comcast.net
Kent Shelman Immediate PDG	kentshelman86@gmail.com
Eric McGuire District Governor Elect	erik.mcguire@scouting.org
Jodi Sundaram District Governor Nominee	maximpact.missouri@gmail.com
Amy Chinnery Valmassei District Governor Nominee Designate	amykcv@gmail.com
Liz Thomas District Treasurer	elizabethaneufeld#gmail.com
Kandice Kos District Executive Secretary	rotary6040office@gmail.com

District 6040 Assistant Governors 2022-23

Area 1	Chad Higdon, Andrew County
Area 2	Justin Duncan, Maryville
Area 3	Annette Sweet, Kirksville
Area 4	Ron Kinzler, Unionville
Area 5	Ryan Dowell, St. Joseph East
Area 6	Kelly Deering, Chillicothe
Area 7	Brian Sevits, Moberly
Area 8	Jane Brown, Kansas City Plaza
Area 9	David Evans, Liberty
Area 10	Paige Fowler, Waldo Brookside
Area 11	Karyn Eppler, Kansas City Plaza
Area 12	Ilene Shehan, Independence
Area 13	Becky Treccariche, Richmond
Area 14	Bennie Eubanks, Independence

Rotary District 6040



Past District Governors

Burnett	Dick	PRID	5670	1967-68	Kansas City
Noble	George	PDG	6030	1967-68	
Klingensmith	Ray	PRIP	6050	1975-76	Kirksville
Whitsitt	Jim	PDG	6030	1978-79	Gallatin
Caplinger	Bob	PDG	5710	1986-87	Parkville
Symes	Hod	PDG	6030	1986-87	St. Joseph East
Dunshee	Bob	PDG	6030	1987-88	Maryville
Ashcroft	Bob	PDG	6030	1988-89	Gladstone
Meng	Ron	PDG	6030	1989-90	St. Joseph East
Jenks	Don	PDG	6030	1990-91	
Whitmer	Gene	PDG	6030	1991-92	Chillicothe
Hahn	Fred	PDG	6070	1992-93	Independence
Johnson	Ken	PDG	6030	1994-95	Princeton
Fitzgerald	Jim	PDG	6030	1995-96	St. Joseph East
Porter	Jim	PDG	6070	1995-96	Kansas City
Napoli	Dave	PDG	6030	1996-97	Parkville
Thompson	Luther	PDG	6030	1997-98	Rock Port
Russell	Jerry	PDG	6030	1998-99	St. Joseph
Eichor	Matt	PDG	6050	1998-99	Kirksville
Williams	Homer	PDG	6040	2000-01	Kirksville
Lunsford	Larry	PRID	6040	2001-02	Kansas City Plaza
Benton	Duane	PDG	6080	2002-03	Kansas City
Chinnery	Carl	PDG	6040	2002-03	Lee's Summit
Wilford	Jerry	PDG	6040	2003-04	Chillicothe
Miller	John	PDG	6040	2004-05	Kansas City
Venters	Jerry	PDG	6040	2005-06	Kansas City Plaza
Gooch	John	PDG	6040	2006-07	Lee's Summit
Bibb	Sally	PDG	6040	2007-08	Kansas City
Usovicz	Elizabeth	PDG	6040	2008-09	Kansas City Plaza
Gill	John	PDG	6040	2009-10	Richmond
Romine	Jeff	PDG	6040	2010-11	Kirksville
Hall	Dan	PDG	6040	2011-12	Lee's Summit Sunrise
Harris	Kenny	PDG	6040	2012-13	Blue Springs
Simon	Rick	PDG	6040	2013-14	Kansas City International
Venters	Cassy	PDG	6040	2014-15	Kansas City Plaza
Mitkos	Leslie	PDG	6490	2014-15	Higginsville
Cupelli	Ralph	PDG	6040	2015-16	Kirksville
LeSage	Kim	PDG	6040	2016-17	Raytown
Garner	Allen	PDG	6040	2017-18	Independence
McCoy	Julie	PDG	6040	2018-19	Chillicothe
Horner	Marc	PDG	6040	2019-20	Kansas City
Gladhart	Donald	PDG	6040	2020-21	St. Joseph
McCaughy	David	PDG	6040	2021-22	Kansas City
Shelman	Kent	PDG	6040	2022-23	Lee's Summit

Foundation Hoop-La 2023 Committee

Frances Reddis – Chair

Rich Linden

Melynn Sight

Denise Holt

Beth Franklin

Marc Horner

Kandi Kos

Jodi Sundaram

Michael Wunsch

Erik McGuire

Amy Chinnery-Valmassei

Bethany Ruhl

Lucy Betteridge

David McCaughey

Kent Shelman

Linda Blessing

Ann Wilkinson

Therese McGill

Valerie Anderson

Other Volunteers at the Event

Jane Brown

Kathy Hogarty

Karyn Eppler

Linda Wunsch

Pat Knauss

**Thank you for being part of District
6040 HOOP-LA 2023!**



District 6040

Website

www.rotary6040.org

FaceBook

<https://www.facebook.com/rotary6040/>