



ROTARY IN LITHUANIA



ABOUT LITHUANIA

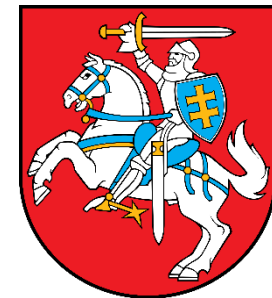
LITHUANIA IS A MEMBER OF:

-  **EU SINCE 2005**
-  **NATO SINCE 2004**
-  **EURO ZONE SINCE 2015**



ABOUT LITHUANIA

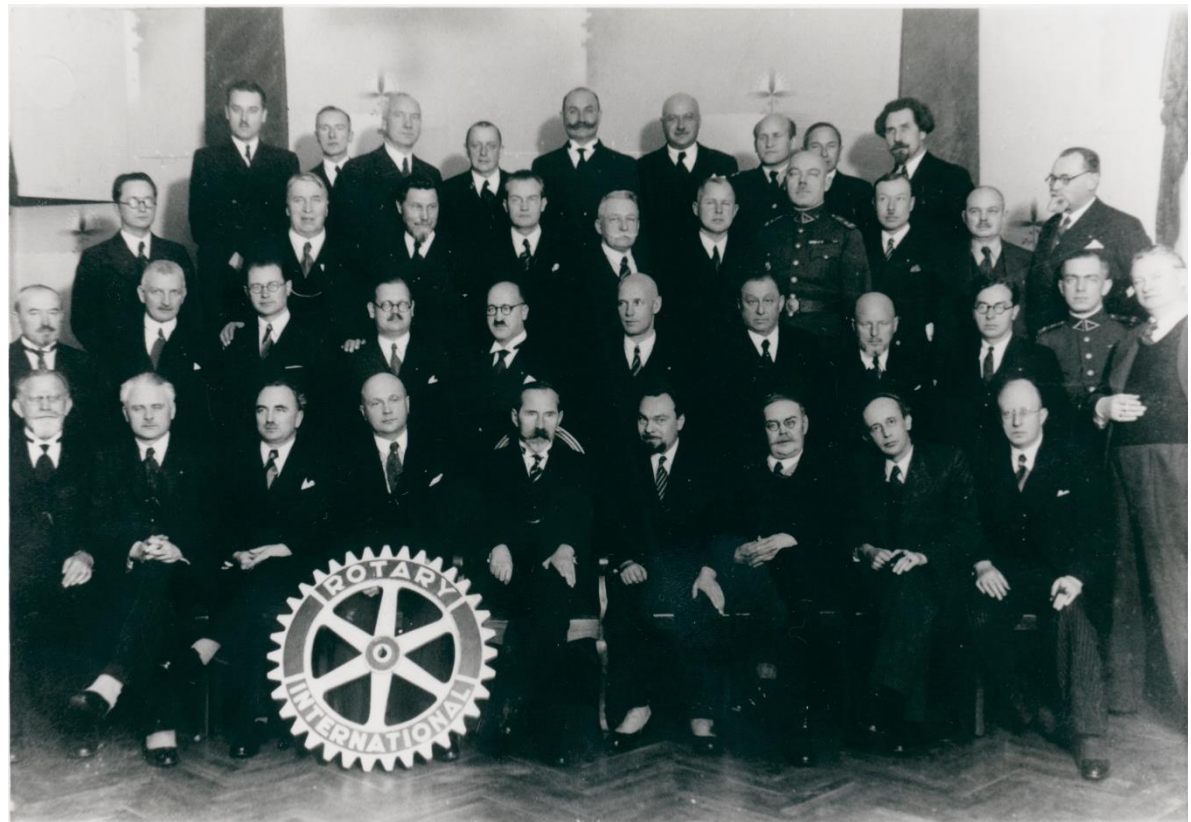
- ❁ **TERRITORY:** 65 286 KM2
- ❁ **POPULATION:** 3 MLN.
- ❁ **CAPITAL:** VILNIUS
- ❁ **STATE LANGUAGE:** LITHUANIAN
- ❁ **ETHNICAL BREAKDOWN:**
LITHUANIANS 84,2%, POLES 6,6%,
RUSSIANS 5,8%, BELLORUSSIANS 1,2%
- ❁ **RELIGION:** 80% CATHOLICS



ROTARY IN LITHUANIA

**FIRST ROTARY CLUB
WAS ESTABLISHED
IN 1934 IN KAUNAS**

- 🌀 1938 ŠIAULIAI RC
- 🌀 1939 KLAIPĖDA RC
- 🌀 1939 VILNIUS RC



ROTARY IN LITHUANIA

1940–1990 SOVIET UNION OCCUPATION PERIOD

- ⚙ ROTARY CLUBS WERE TERMINATED

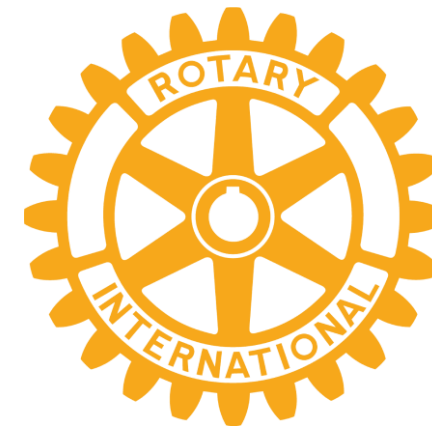
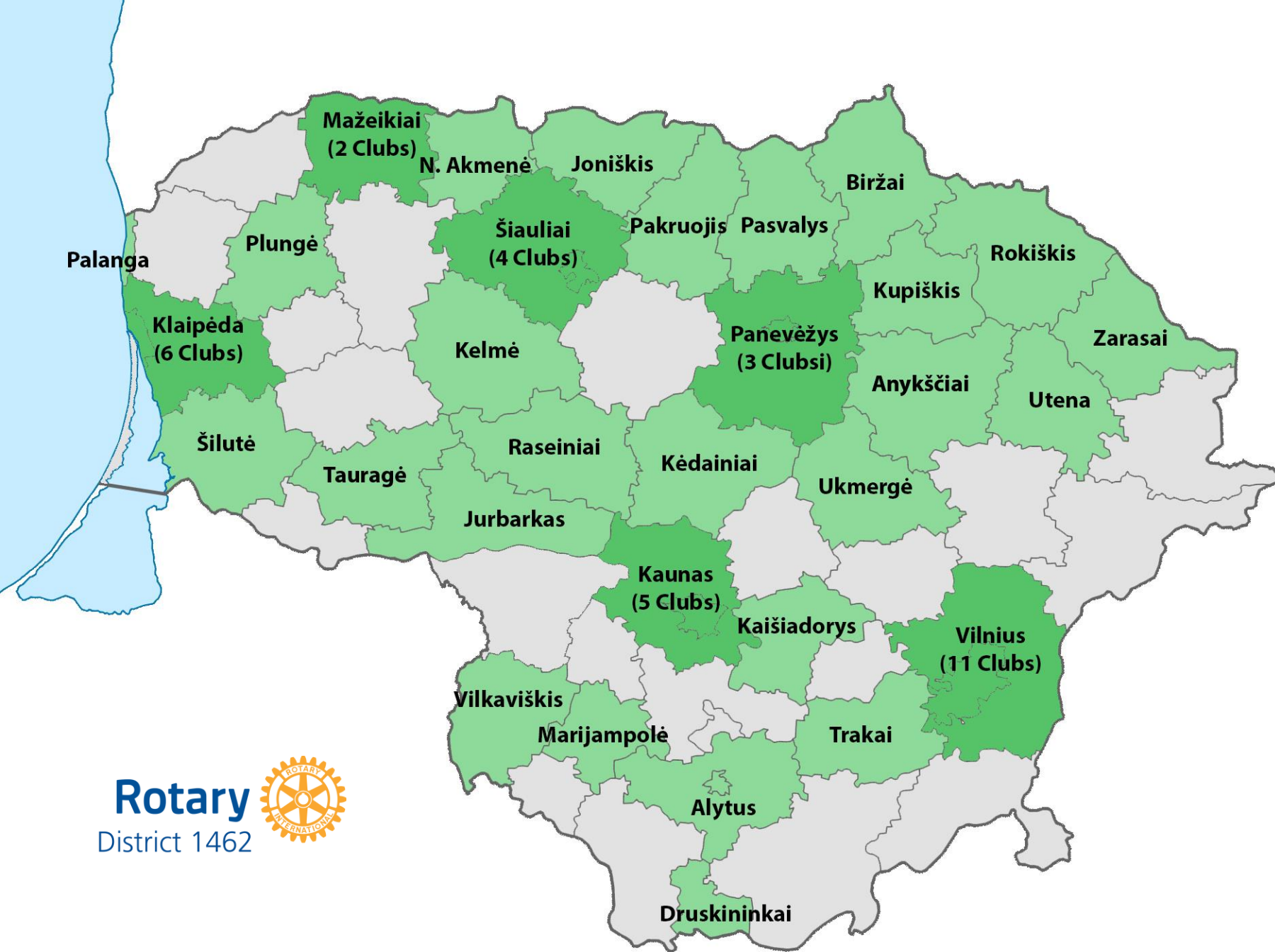
- ⚙ MEMBERS WERE PERSECUTED
MANY OF THEM EMIGRATED TO WESTERN EUROPE
OR WERE DEPORTED TO SIBERIA

ROTARY IN LITHUANIA

LITHUANIA RE-ESTABLISHED INDEPENDENCE IN 1990

- ⚙️ ROTARY MOVEMENT CONTINUE
(FIRST CLUB - VILNIUS RC, 1992)
- ⚙️ LITHUANIA WAS A PART OF
RI DISTRICT 1460 (WITH DENMARK)
- ⚙️ INDEPENDENT RI DISTRICT 1462
WAS ESTABLISHED ON JULY 1, 2014





1 DISTRICT
59 CLUBS
31 TOWNS
1777 MEMBERS

ROTARY IN THE BALTIC STATES



ESTONIA: 602 MEMBERS, 20 CLUBS, 17.94% FEMALE

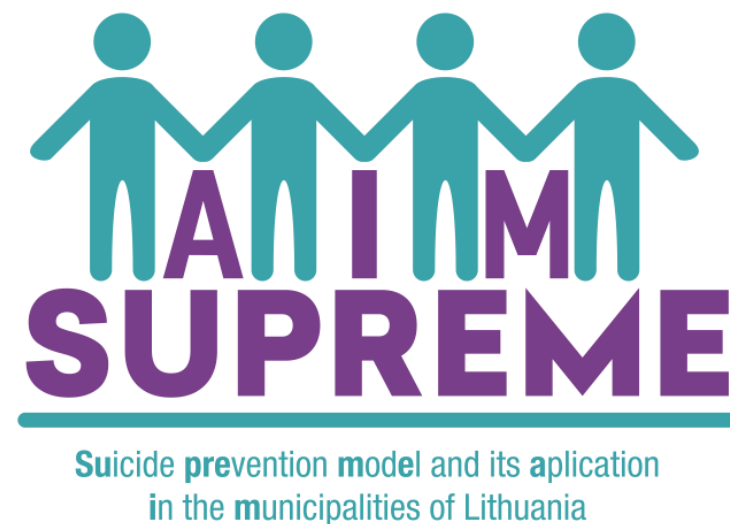
LATVIA: 364 MEMBERS, 20 CLUBS, 34.89% FEMALE

LITHUANIA: 1777 MEMBERS, 59 CLUBS, 16,12% FEMALE

ROTARY INTERNATIONAL: 1 212 347 MEMBERS, 35 741 CLUBS, 22,69% FEMALE

DISTRICT FOCUS - SUICIDE PREVENTION

- ⚙️ THE SUICIDE RATE IN LITHUANIA IS THE HIGHEST IN EUROPE
- ⚙️ SUICIDE PREVENTION – LONG-TERM DISTRICT PROGRAM SINCE 2014
- ⚙️ RI GLOBAL GRANT PROJECT'2018-20 IN 11 MUNICIPALITIES (budget - 91 700 USD)



EXCHANGE PROGRAMS

CURRENT PROGRAMS

- 🌀 LTEP: LONG TERM EXCHANGE
- 🌀 STEP: CAMPS ABROAD AND IN LITHUANIA
- 🌀 STEP: SHORT TERM FAMILY-TO-FAMILY EXCHANGE
- 🌀 RFE: ROTARY FIRENDSHIP EXCHANGE
- 🌀 FX: FRIENDSHIP EXCHANGE

ACTIVE MEMBERS OF EEMA AND OTHER YEO
AMBITION TO HOST EEMA CONFERENCE IN 2022

100 LTEP PARTICIPANTS IN 5 YEARS
SINCE INDEPENDENT DISTRICT

WWW.YOUTHEXCHANGE.LT



LITHUANIAN ROTARY IMPACT WORLDWIDE

🌀 FIRST NATIONAL ROTARY CLUB ABROAD IN THE WORLD

ROTARY CLUB OF CHICAGOLAND LITHUANIANS (CHICAGO)
WAS CHARTERED IN 2007, OFFICIAL LANGUAGE - LITHUANIAN

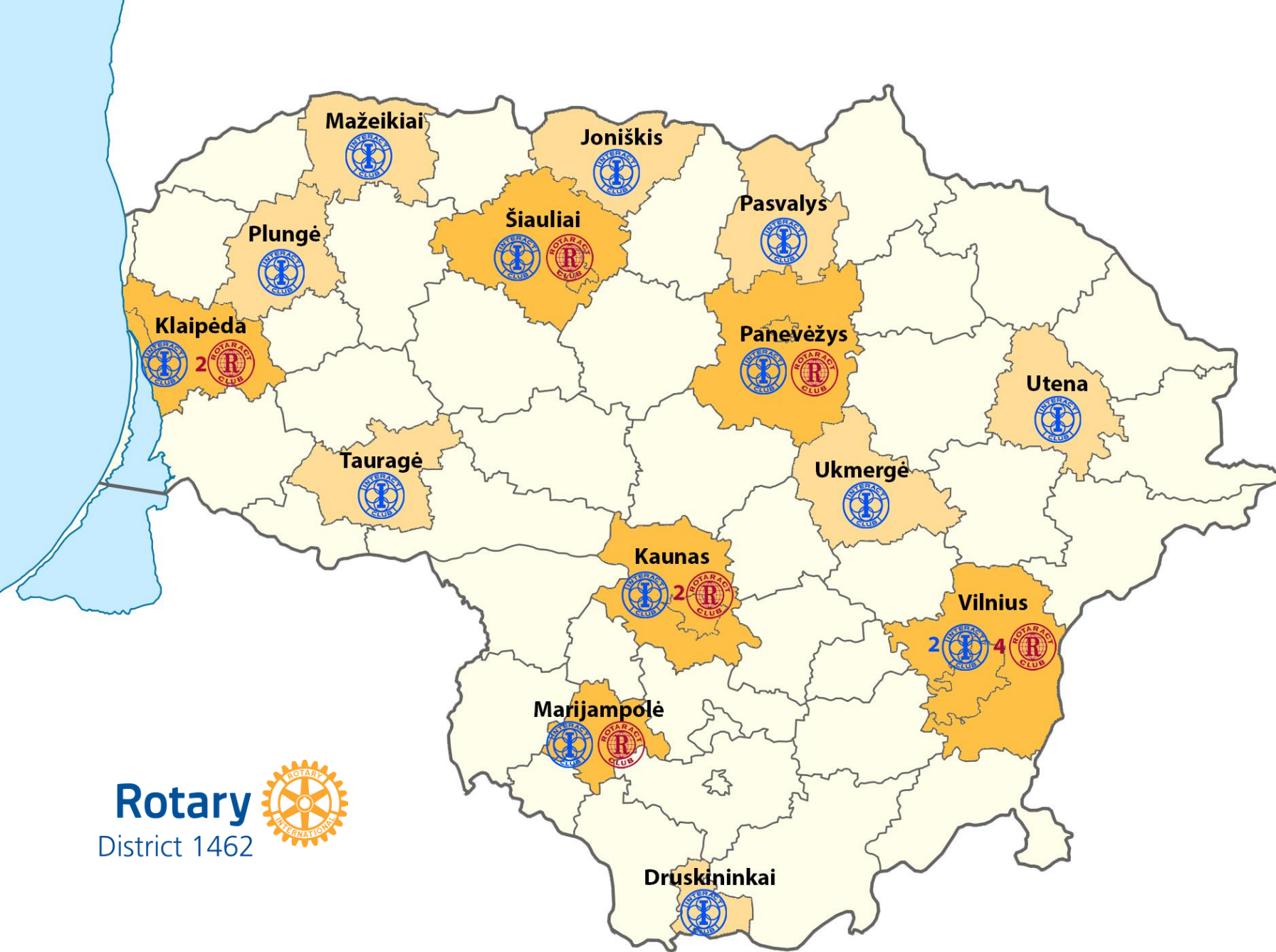


🌀 FIRST WOMEN ONLY-ROTARY CLUB IN THE WORLD

ROTARY CLUB OF ADITĖ (KLAIPĖDA) WAS CHARTERED IN 1996

🌀 INTER-COUNTRY COMMITTEES

WITH DENMARK, POLAND, BELARUS, UKRAINE, NORWAY



Rotary
District 1462



Rotaract



11 CLUBS

6 TOWNS

200+ MEMBERS

Interact



19 CLUBS

14 TOWNS

150+ MEMBERS

ROTARACT

- 11 CLUBS
- 50% MALES, 50% FEMALES
- 30 STRONG PROJECTS
- 50 000 EUR FUNDS ANNUALLY



KAI
SKAU-
DA







ROTARY INTERNATIONAL EVENTS HELD IN LITHUANIA



**ROTARY INTERNATIONAL INSTITUTE &
GOVERNOR-ELECT TRAINING SEMINAR**
12-16 SEPTEMBER, 2018

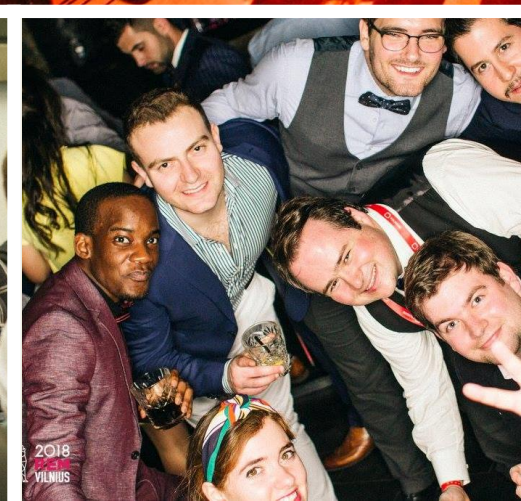
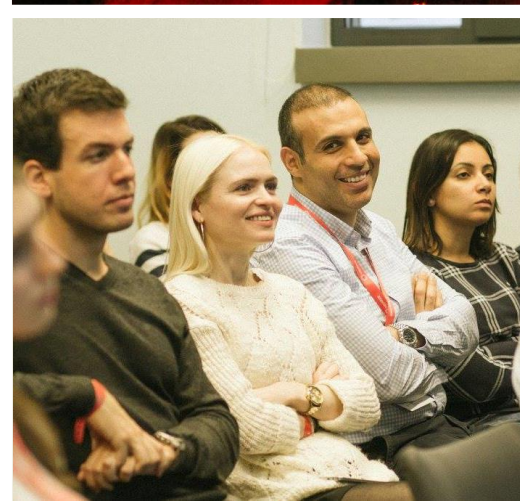
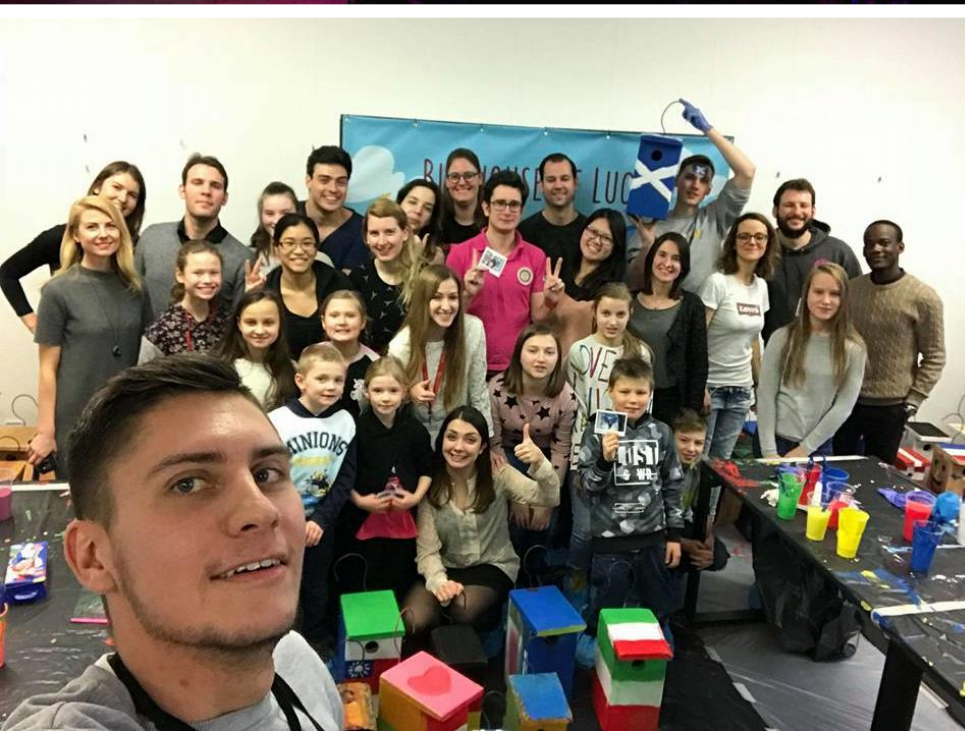
- ⚙ **5 DAYS**
- ⚙ **350 PARTICIPANTS**



**ROTARACT
EUROPE MEETING**
18-21 JANUARY, 2018

- ⚙ **4 DAYS**
- ⚙ **450 PARTICIPANTS**





ROTARIADA

**ANNUAL EVENT OF SPORTS, CULTURE, ACTIVE
LEISURE AND FRIENDSHIP FOR MEMBERS OF
ROTARY, ROTARACT, INTERACT
FROM LITHUANIA AND ABROAD**



AIM OF ROTARIADA



**TO SUPPORT THE DISABLED
PARALYMPIC LITHUANIAN
SPORTSMEN**



**TO DETERMINE THE
STRONGEST CLUBS AND
PERSONS IN SPORTS**





ROTARIADA 2002-2018



ROTARY FRIENDSHIP EXCHANGE

Lithuania - India



ROTARY FRIENDSHIP EXCHANGE

Lithuania - USA



ROTARY FRIENDSHIP EXCHANGE

Lithuania - Brasil



CONTACTS



WWW.ROTARY1462.ORG



@ ROTARYLITHUANIA



@ ROTARYLITHUANIA