



# ROTARIAN ACTION GROUPS

Rotarian Action Groups help Rotary clubs and districts plan and carry out community development and humanitarian service projects in their area of expertise. The groups are organized by Rotarians and Rotaractors who are proficient, and have a passion for service, in a particular field.

## HOW ROTARIAN ACTION GROUPS OPERATE

- Each group functions independently of Rotary International establishing its own rules, dues requirements, and administrative structure.
- Membership is open to Rotarians, their family members as well as participants and alumni of all Rotary and Foundation programs.
- Rotarian Action Groups must adopt Rotary International's standard bylaws and operate in accordance with Rotary policy.
- Rotarian Action Groups regularly collaborate with clubs and districts on service projects in their area of specialty.
- Rotarian Action Groups can help clubs and districts obtain funding or other assistance for their service projects.



## BENEFITS OF ROTARIAN ACTION GROUPS

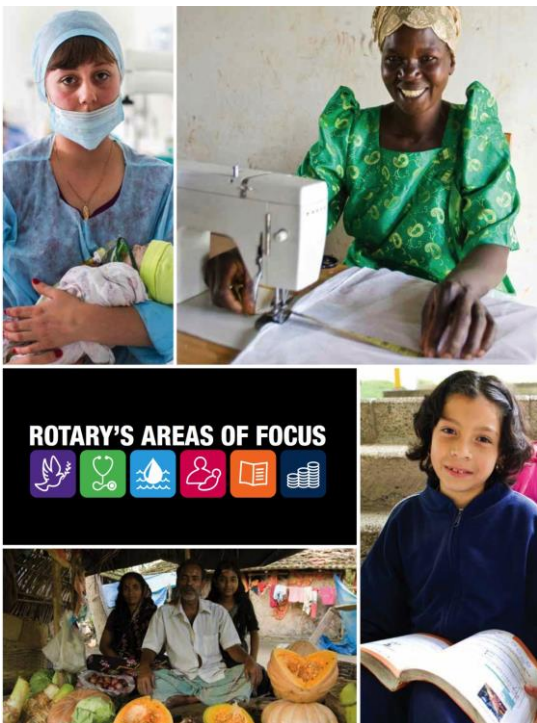
- By joining a Rotarian Action Group, you can engage in meaningful service activities outside your own club, district, or country.
- By partnering with a Rotarian Action Group, your club or district gains the support of experts for planning and implementing a project.



TAKE ACTION: [www.rotary.org/actiongroups](http://www.rotary.org/actiongroups)

## ROTARIAN ACTION GROUPS

Do you have expertise and a passion to serve in a particular area?  
Visit the website of the relevant Rotarian Action Group to learn more.



### ROTARY'S AREAS OF FOCUS



|   |  |
|---|--|
| <b>Addiction Prevention</b>                     | <a href="http://www.rag-ap.org">www.rag-ap.org</a>   |
| <b>AIDS and Family Health</b>                   | <a href="http://www.rfha.org">www.rfha.org</a>   |
| <b>Alzheimer's and Dementia</b>                 | <a href="http://adrag.org/">http://adrag.org/</a>  |
| <b>Blindness Prevention</b>                     | <a href="http://www.rag4bp.org">www.rag4bp.org</a>   |
| <b>Blood Donation</b>                           | <a href="http://www.ourblooddrive.org">www.ourblooddrive.org</a>                             |
| <b>Clubfoot</b>                                 | <a href="http://www.rag4clubfoot.org">www.rag4clubfoot.org</a>                               |
| <b>Diabetes</b>                                 | <a href="http://www.ragdiabetes.org">www.ragdiabetes.org</a>                                 |
| <b>Disaster Assistance</b>                      | <a href="http://www.dna-rag.com">www.dna-rag.com</a>   |
| <b>Domestic Violence Prevention</b>             | <a href="http://www.ragfamsafe.org">http://www.ragfamsafe.org</a>                            |
| <b>Endangered Species</b>                       | <a href="http://www.endangeredrag.org">www.endangeredrag.org</a>                             |
| <b>Environmental Sustainability</b>             | <a href="http://www.esrag.org">www.esrag.org</a>   |
| <b>Food Plant Solutions</b>                     | <a href="http://foodplantsolutions.org">http://foodplantsolutions.org</a>                    |
| <b>Health Education and Wellness</b>            | <a href="http://www.hewrag.org">www.hewrag.org</a>   |
| <b>Hearing</b>                                  | <a href="http://www.ifrahl.org">www.ifrahl.org</a>   |
| <b>Hepatitis</b>                                | <a href="https://ragforhepatitiseradication.org">https://ragforhepatitiseradication.org</a>  |
| <b>Literacy</b>                                 | <a href="http://www.litrag.org">www.litrag.org</a>   |
| <b>Malaria</b>                                  | <a href="http://www.remarag.org">www.remarag.org</a>   |
| <b>Mental Health</b>                            | <a href="http://ragonmentalhealth.org">http://ragonmentalhealth.org</a>                      |
| <b>Microfinance &amp; Community Development</b> | <a href="http://ragm.org">http://ragm.org</a>  |
| <b>Multiple Sclerosis</b>                       | <a href="http://www.rotary-rfmsa.org">www.rotary-rfmsa.org</a>                               |
| <b>Peace</b>                                    | <a href="http://www.rotarianactiongroupforpeace.org">www.rotarianactiongroupforpeace.org</a> |
| <b>Polio Survivors and Associates</b>           | <a href="http://www.rotarypoliosurvivors.com">www.rotarypoliosurvivors.com</a>               |
| <b>Population and Development</b>               | <a href="http://www.rifpd.org">www.rifpd.org</a>   |
| <b>Preconception Care</b>                       | <a href="http://www.raghphc.org">www.raghphc.org</a>   |
| <b>Slavery</b>                                  | <a href="http://www.racsrag.org">www.racsrag.org</a>   |
| <b>Water and Sanitation</b>                     | <a href="http://www.wasrag.org">www.wasrag.org</a>   |

## START A NEW ROTARIAN ACTION GROUP

If your service interest isn't represented by an existing Rotarian Action Group, contact Rotary staff at [actiongroups@rotary.org](mailto:actiongroups@rotary.org) to learn how you can start a new group. All groups are subject to approval by the Rotary International Board of Directors.

## EXAMPLES OF ROTARIAN ACTION GROUPS IN ACTION

- The Rotarian Action Group for Population & Development works with Rotary clubs in Germany, Austria, and Nigeria to reduce mortality rates among mothers and newborns at hospitals in rural Nigeria.
- Rotarians for Family Health & AIDS Prevention sponsors an annual event to provide preventive health care services, including HIV testing and counseling, to thousands of people in hundreds of sites across Africa.
- The Rotarian Action Group for Microfinance and Community Development connects Rotary clubs and districts with microfinance institutions to help poor people establish income-generating activities.

## RELATED RESOURCES

- *Rotary's Area of Focus*  
[www.rotary.org/myrotary/en/document/589](http://www.rotary.org/myrotary/en/document/589)
- Rotarian Action Groups Officer Directory  
[www.rotary.org/myrotary/en/document/714](http://www.rotary.org/myrotary/en/document/714)
- Rotarian Action Groups Annual Report  
[www.rotary.org/myrotary/en/document/713](http://www.rotary.org/myrotary/en/document/713)
- *Community Assessment Tools*  
[www.rotary.org/myrotary/en/document/578](http://www.rotary.org/myrotary/en/document/578)
- *Lifecycle of a Project*  
[www.rotary.org/myrotary/en/take-action/develop-projects/lifecycle-project](http://www.rotary.org/myrotary/en/take-action/develop-projects/lifecycle-project)

## FIND OUT MORE

Email: [actiongroups@rotary.org](mailto:actiongroups@rotary.org)