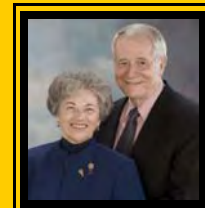




District 6380

September 2009



District 6380
Governor Judy
Garver and husband
Hal Parish

GOVERNOR MUSINGS for September

The first quarter of Rotary year 2009-10 is quickly drawing to a close. How fast the days go each year. When July 1 becomes reality every year, 33,000 club presidents take office, 532 district governors move into new roles, and Rotary International officers step into the new positions they have been selected for. Looking forward on that day it seems as if there is plenty of time to accomplish everything that has been in the planning stages for this Rotary year 2009-10. Then life happens, and here we are a quarter of the way through the year. We realize that it is important to make good use of each day and take some action steps in the plans we have in place.

I have been amazed at all the wonderful Rotary projects -- both local and global community projects -- that have been recently started or are continuing from work that was begun when other presidents and committee members took office on their July 1. District 6380 Rotarians are living examples of what the Rotary motto "Service Above Self" means. Our Rotarians are people with hearts that are full of compassion for those who do not have such great lives -- either because of lack of the basic necessities of life or because they are living in circumstances that prevent any kind of peaceful existence. Our Rotarians are putting their compassionate feelings into action and doing something to relieve the suffering of others in all kinds of ways.



Who are these Rotarians who are doing all these wonderful projects? They are people from every walk of life who care about others and who want to make a difference in the world. They have found Rotary to be the organization through which they can get good things to happen. They have found an organization through which individuals join together and make huge impacts.

Every issue of this District 6380 newsletter has articles describing club projects that are in place right now. This gives everyone in our district the opportunity to learn what projects clubs have embraced and to see what projects need assistance from others across the Rotary world.

The Youth Exchange students are here in the district going to school and being hosted by their first families. Look at the article in this issue from Bob Baker that asks us to spread the word about this program and to encourage students to make an application to go out this next academic year. The interviews will be held December 5.

Please continue on with all the Rotary projects you are involved in. These projects are making big differences in many people's lives. Rotarians are shining role models of how people can make a difference -- differences that positively impact the lives of countless millions of people.

THE FUTURE OF ROTARY -- AND THE WORLD -- IS IN YOUR HANDS.

Judy

"Just have fun and learn about Rotary!"

This is what DG Judy Garver said when asked about the theme for our 2010 district conference. With less than seven months to go to the conference at the beautiful Dearborn Inn in Dearborn, Michigan, your planning team is working hard behind the scenes, as usual, putting the final touches on everything. Details will follow as we get closer. The Web site will be available soon to allow early registration for those who like to get everything settled well in advance. The Web site will be available as a link on our district Web site. We will also have regular stories on the district Web site keeping you up to date with our plans to "Just have fun and learn about Rotary!" A reminder to put these dates on your 2010 calendar now!



**April 30 through May 2, 2010
for the district conference
in Dearborn, Michigan**

8/31/09 Meeting of the District Foundation Grants Committee

PRESENT telephonically were: Grants committee chair, PDG Terry Youlton; District Governor Judy Garver; District Governor-Elect, Janet McPeek; District Governor Nominee, Steve Youtz; and District Rotary Foundation chair, Don Chisholm.

IT WAS DETERMINED THAT:

WHEREAS:

1. The Rotary Foundation (hereafter, TRF) will have expended all of its funds allocated to Matching Grant Projects very early in this Rotary year, if it has not already done so.
2. Certain Matching Grant Projects planned by Rotary Clubs of District 6380 will not be funded by TRF because of the shortfall of TRF funds available for Matching Grants.
3. The allocation of District 6380's 2009-2010 District Designated Funds (hereafter, DDF) was predicated on receiving a carryover of \$19,000 from its previous year's DDF.
4. District 6380 had previously allocated \$32,000 of its DDF for Matching Grant Projects in the Rotary year 2009-2010.
5. The actual DDF carryover received for 2009-2010 by District 6380 was \$62,000.
6. Historically, many Matching Grant Project host districts and clubs have only contributed a token sum to Matching Grant Projects, whether or not that host district or club may have had the capacity to make a more significant financial contribution.

THEREFORE, District 6380 will commit an increased amount of its DDF to support Matching Grant Projects denied the anticipated Rotary Foundation funding in 2009-2010, by dividing the carryover DDF it recently received in excess of \$19,000, between the 2009-2010 and 2010-2011 Rotary years. Thus, approximately \$20,000 will be added to the \$32,000 of DDF (less those funds already expended), previously allocated by District 6380 for Matching Grants in the Rotary year 2009-2010 and the same will be done on the following basis:

1. All of the requirements established by TRF for Matching Grants remain in full force and effect; including, but not limited to the minimum project amount of \$10,000.
2. District 6380 DDF, in the Rotary year 2009-2010, will match at a fifty (50%) percent rate, all funds contributed by Rotary Clubs of District 6380 for Matching Grant Projects to a maximum of \$5,000 per project. (For every \$1 of money generated by clubs from District 6380 for a Matching Grant Project, there will be a match of 50 cents of DDF during 2009-2010, not to exceed \$5,000 per project.)
3. A Rotary club's application to the District Grants Committee for DDF to fund a Matching Grant Project which TRF is unable to fund, will include the requirement that the host district disclose and confirm the amount of DDF it currently has -- whether or not the host district chooses to make those funds available to the Matching Grant Project, and the host club must likewise disclose and confirm what funds it has available for the Matching Grant Project -- whether or not the host club chooses to make those funds available to the Matching Grant Project.

*Respectfully submitted,
Don Chisholm
DRFC, District 6380*

Medical Equipment Goes to The Amazon in Brazil

■ Rachel Chapa

Earlier communication:

From Dia fellow Rotarians,
B

om Dia fellow Rotarians,
An update on 3H Grant TH-60261 is finally able to be made since most of the dental equipment has arrived.

I had planned on waiting to report on the new dental clinics until photos could be obtained of the installed units, but it seems this will take a little while more.

Please visit this blog
http://coisasdeesperanca.blogspot.com/2009_08_01_archive.html to see photos of the arrival of the equipment at the beneficiary organization with our primary contact in Brazil. The remaining equipment to purchase are two vehicles to improve and expand rural health care programs; one is scheduled to come into a dealership this week.

Thank you again for your partnership and patience in the drawn out process. Please let me know if you have any questions.

P.S. Please notify me of any changes / additions in contacts for your club so they can be included in future updates.

All the best,
Rachel Chapa
Rotary Club Ann Arbor North
RCAAN (248) 318-3124

Later communication:

This particular grant is due to the hard work of many people, including Daniel Weiss; a previous member of RCAAN; and who has since moved out of the country to other nonprofit works. I was very fortunate to be able to step into his shoes and take over the administration and execution with the existing committee of these good works! This grant provides needed equipment for a region of Northern Brazil in the Amazon which because of lack of infrastructure could not support a healthy population.



This grant provides benefits to three hospitals and one large nonprofit organization / medical facility in and surrounding Santarem, Para - Brazil.

Updated status of this grant:

The three ultrasounds have been delivered. Four of the five x-rays have been delivered; the fifth is on its way. TRF just gave permission to deliver to a different hospital (the original one was not able to be completed in new construction that was cancelled.) A huge shipment of a majority of the seven new dental clinics just arrived last week and are being installed now.

Our 3H grant coordinator is still awaiting some information to bring our district current with the first grant reporting in January. Unfortunately there was a changing of grant coordinators in the midst of the grant and the new coordinator did a review and wants more information to bring us in compliance.

At the end we hope there will be some remaining funds to purchase yet still more equipment or fund another project that RCAAN supports now -- a nonprofit that supports more than 1,100 street children in the same area this 3H grant supports.

I am trying to track down the full name of the current DG in our partner district.

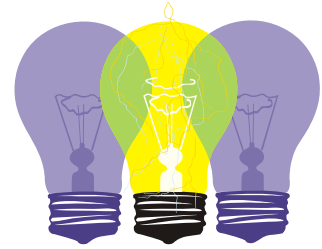
I hope to have this information soon.

<http://coisasdeesperanca.blogspot.com> is the blog to one of the major beneficiaries (Fundacao Esperanca.) They are receiving the dental equipment and two vehicles. If you have any questions please let me know. I would hope the rest of the funds could be spent by October so a November visit could be planned. It would be great if you could accompany me to see firsthand all of the locations (on the Amazon River) and hospitals that are benefitting thousands.

WHAT IS PR?

■ PR Chair Ginger Nickloy of the Lakes Area Club

Public relations is defined in the textbooks as "communication with the various publics, including customers, suppliers, stockholders, employees, the government, and the society in which it operates." Textbooks also put public relations in the study of "marketing," so purists and academicians will use public relations as part of the marketing plan.



It is important for Rotary to communicate with their members and the public in their communities, therefore, but should think about these communication processes as part of a plan to create or improve Rotary's image with those who can help reach objectives established by the club. Building a positive image generates membership interest and participation in events (projects and fund-raisers).

Certainly getting news media is a good way to reach the public, but It is also necessary to consider other communication or promotional strategies such as participating in community events, developing useful items for give-a-ways with the Rotary logo and club name (tote bags, can coolers, etc.), use of lawn signs and/or other signage, or other "tried and true" strategies. Every opportunity to establish a positive image should be considered, and brainstorming with members can generate new ideas.

Communication with members is essential for retention and to keep them involved in the club's activities. The Internet, of course, is the medium of choice and is easily accomplished. Some print communication needs to be considered such as a club brochure and/or a handout at meetings for reminders of events or programs. Some of these strategies for communication and promotion are free; others can be accomplished at minimal expense; and there are some that are expensive. Costs can often be minimized by getting sponsors and/or advertisers from members and friends. When a cost is involved it is necessary to consider the value of the strategy and if it will accomplish an objective established.

Advertising is a different communication strategy in the marketing plan because it is paid communication versus a news story, which is free. It is common to think that a news story is more "believable" than advertising for that very reason.

Due to the need to have a mixture of strategies (both paid and free), it is important to have a marketing plan and establish a budget for marketing and public relations strategies. The marketing plan also helps identify the targeted market for members and establishes goals and objectives in order to measure accomplishments.

Attach this tag line to all your personal email:

Help us end Polio: www.rotary.org/endpolio



Then, ask your Rotary club members to do the same and ask them to ask their friends and email contacts to link on and help us end polio.

This is informing and asking the general public to support our cause of polio eradication, give a very positive image of Rotary, and it will raise funds to support our Polio Challenge!

GSE Departs for Japan after Send-Off Party

Our outbound GSE team has been preparing to leave for District 2550 in Japan on September 30. Each team member has been learning some Japanese, and they have prepared their presentation in Japanese which they presented at the farewell party September 20. Team Leader Lori Sprague's home club Dexter hosted the gathering at Terry B's in Dexter. It was a great chance to say farewell to our team who has been working really hard to make this exchange a very wonderful experience for all.

Rotary Leadership Institute Training

Recently, several District 6380 Rotarians went through the orientation course and training for RLI. RLI is a course of education for club members to help them be prepared to take on leadership roles in the club. Leadership in a volunteer organization requires a special set of skills and knowledge about Rotary that has not been available for club members to learn before. Excellent training programs have been in existence for many years for district governors and other Rotary officers, but club member training has largely been job specific and not leadership driven which has resulted in clubs that too often find it hard to find people ready to assume positions of leadership in the club. This excellent training course was designed in 1992 and has been continually upgraded and improved since then. The faculty will have some further training sessions to attend before we will roll out the course in our district/division. I will keep you informed when we are ready to start taking registrations for Course 1.



PHOTOS WANTED

I would love to publish the photos in our district newsletter of every new member we induct this year in our clubs since July 1. Please be sure and take a picture of every new member and send it to me so we can publish it. I hope the newsletter grows to be about 20 pages each month! Please send a picture of anyone who has become a member this Rotary year.

Judy Garver
District 6380 Governor 2009-10

Facts on Literacy

■ *submitted by Mary Elizabeth Harper
Literacy Co-Chair*

According to researchers Hart and Risley findings in the U.S., professional families children hear an average of 2,153 words per hour, in working class families 1,251 words per hour, and in welfare families only 616 words per hour. The relationship of illiteracy and poverty is undeniable.

The International Reading Association culled the following literacy facts from lists assembled by ProLiteracy Worldwide, Alliance for Excellent Education, and AmericaScores.

From ProLiteracy Worldwide: Facts about Literacy,
www.proliteracy.org

Globally

- The per capita income in countries with a literacy rate less than 55 percent averages about \$600.
- Teaching mothers to read can lead to a decrease in infant mortality of up to 50 percent.
- 98 percent of all non-literates live in developing countries.
- 52 percent of all non-literates live in India and China.
- Africa as a continent has a literacy rate of less than 60 percent.
- In all developing countries, the percentage of children aged 6-11 not attending school is 15 percent. In the least developed countries, it is 45 percent.

In the U.S.

- According to the U.S. Census Bureau, workers 18 and over with a bachelor's degree earn an average of \$51,206 a year, while those with a high school diploma earn \$27,915; those without a high school diploma average \$18,734
- American business currently spends more than \$60 billion each year on employee training, much of that for remedial reading, writing, and mathematics.
- Annual health care costs in the U.S. are four times higher for individuals with low literacy skills than they are for individuals with high level literacy skills.
- Women in the U.S. who have little formal education are more likely than educated women to be in abusive relationships.
- One-half of all adults in U.S. federal and state correctional institutions cannot read or write at all; 85 percent of juvenile offenders have reading problems.

District Ambassadorial Scholar

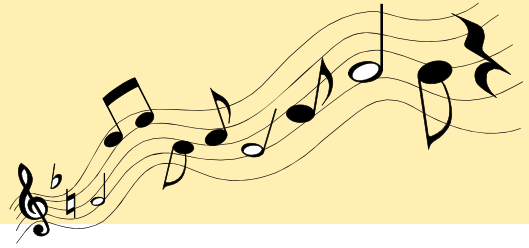
From: Katharina Obser

katharina.obser@gmail.com

<http://katsjoburg.blogspot.com/>

September 21, 2009

Subject: Running for the Khulanathi Music Project



Dear Family and Friends,

I hope everyone is doing well and (for those of you in the Northern Hemisphere) had a wonderful and relaxing summer. Here in South Africa, my friends and I are finally putting away the winter fleeces and scarves and enjoying our own longer and sunny days.

Along with anticipating summer, as many of you already know, I've been training for my very first marathon with two other Rotary Ambassadorial scholars, Lindsay and Chris, as well as Chris' wife, Mary. The November 1 Soweto Marathon is considered one of South Africa's friendliest marathons (though certainly not an easy one) as runners pass through the sights and community of one of the country's most famous former townships, and we're looking forward to this challenging race.

Knowing that we wanted to use the race as to give back to the community, we eventually learned about the Khulanathi Music Ensemble, a music school in Daveyton, a sprawling former township southeast of Jo'burg. The project was founded by Bennett Mamabolo, a musician who, along with a handful of other volunteer instructors, spends each Saturday teaching local township kids how to make music. Children begin playing the recorder and learning to read around age eight, and soon move on to other instruments and play in the Khulanathi Ensemble. With the support of a local Rotary club, they sit for exams through the London Royal College of Music and pass with high marks each year. In addition, the kids have played at the renowned Grahamstown Arts Festival and hope to expand their

performance tradition.

The program has very little financial support, and yet has sustained itself for over nine years through volunteer teaching and donated materials. After our own visits, we were so impressed with what we saw and knew we wanted to help the school grow. The project takes kids off the street and teaches them not only all the value music has to offer but invaluable self-esteem and life skills.

On a personal note, most of you know that music has been a part of my life since I began playing flute in middle school, continuing with band and Michigan Pops in college and now with the chance to perform with the Johannesburg Youth Chamber Winds. Being in these groups had a huge influence in learning the importance of practice and time management, but more importantly, many of my happiest memories and dearest friends come from my time in ensembles.

And so, we would like to ask you to support this project, and motivate us to go just a little faster in our race, with a donation to the Khulanathi Music Project. Your money will be used to empower the project by developing a much-needed administration, expand the library of music, support the addition and maintenance of instruments, and most importantly, enable the ensemble to grow beyond its current fifty some students into other parts of the community. Additionally, with substantial funding, the project can begin to approach even bigger sponsors for support. We know these are difficult economic times to make such a request, but we'd like

you to consider the huge difference you could make in these children's lives.

We've set up a Web site, www.khulanathi.wordpress.com where you can find more information about the project, about the marathon, about ourselves and our ongoing training / races, and about how to contribute. You'll find videos of Bennett and another instructor on their visions for the project, as well as excerpts of the performances we saw when we visited. For South Africans, there is information on where to make an electronic transfer whereas for international donations we've set up a PayPal site.

We would be so grateful for any contribution you can make. And if you have any questions, please don't hesitate to email me directly or email all of us at joburgrotaryscholars09@gmail.com

Thank you in advance. We'll continue to keep you updated on the blog about our fundraising and running progress and hope to hear from you soon.

*With many thanks,
Kat*

*Katharina Obser
Rotary Ambassadorial Scholar
2008-2009, Districts 6380/9300
Research Assistant, Forced Migration
Studies Programme, Wits University*

The Rotary Ambassadorial Scholars 2009

of Johannesburg, South Africa

invite

YOU

to support
them in
the running of the



Soweto

MARATHON

to benefit the

KHULANATHI MUSIC PROJECT

The Khulanathi Music Project aims to create self esteem, self expression and confidence in young people through music. This initiative was started by Bennet Mamabolo in 1999 in Daveyton, South Africa. Taught by voluntary instructors and using donated instruments, children start at the age of 8, learning the recorder and to read music. Before long, they are playing in the Ensemble.

The Ensemble plays jazz, big band and popular music at public venues and, in addition to continuing to perform at the Grahamstown National Arts Festival, the Ensemble has international ambitions.

Due to lack of funding the project has been very limited in scope and rides on the generosity of its teachers. We hope to assist the program to expand and empower more children through music. To hear the band and find out what you can do to help these young musicians' dreams come true



VISIT → khulanathi.wordpress.com
or e-mail → joburgrotaryscholars09@gmail.com

Rotary Youth Exchange Update

■ Bob Baker

Rotary clubs should be actively seeking outbound candidates for the academic year program 2010-11. Clubs are encouraged to identify qualified high school students who will be age 16 to 18 ½ in August of 2010, and assist them in preparing their applications. Clubs should review and endorse the applications prior to sending them to the outbound Youth Exchange chair, PDG Bob Baker, of the Mount Clemens Rotary Club. Applications are available online at www.ohioerie.org or at www.Rotary.org

The deadline for submission of completed applications is October 31 for the 2010-11 academic year. District selection interviews will be held December 5 in Mount Clemens, Michigan. Any Rotarians interested in participating in the interview process should contact Bob Baker for further details on the interviews.

Applications for the Summer Term Exchange Program (STEP) for the summer of 2010 are likewise available online. These applications must be completed by the candidates, and the Rotary Club must endorse the application after an interview with the students and their parents.

The District Youth Exchange Committee can provide a suggested outline for the interview process. These endorsed applications are due to the District STEP chair, Norm Raymond of the Ferndale Rotary Club or Dianna Gray of the Blenheim Rotary Club, by January 15, 2010.

It's not too early to be preparing for the 2010-11 exchange year. Host families should be identified and interviewed and have background checks completed, so that the guarantee forms that the inbound students need to get their student visas can be completed as soon as their applications begin arriving in late winter.

Due to new government regulations, student visas are much more difficult to obtain in the U.S., and inbound applications must be completed and returned to the students' home countries considerably earlier than in prior years. If this is not done promptly, the inbound student may not get their visa in time, and the exchange of our outbound students could then be put in jeopardy.

Youth Exchange Committee members are available to help with any questions you may have about the program, and can also present a program to your Rotary club or any school or youth group about this fantastic opportunity for the young people of our communities.



New Rotaract Club Celebrates the Signing of Its Application for Membership

Our newest Rotaract Club, Metro Detroit Rotaract Club, prepared their application to become chartered with Rotary International. Several Rotarians were there to celebrate with the charter members and sign the application too. This club has been meeting for quite some time, and has now gotten sufficient members to be chartered.

They have not yet officially chartered and they already have done the following:

1. They have had three fund-raisers.
2. They have sent more than \$1,000 to Nepal to supply water filters to a village.
3. They have gathered 1,800 hats for the homeless along with toiletries that they will be delivering with the Salvation Army as they deliver meals to homeless people.



Is this group dedicated to service, or what?

Rotaract clubs hold meetings in a very similar format to Rotary clubs. They will need a club banner and other club meeting items. If your club would like to donate start-up money or some meeting supplies, please let Troy Club president Eileen Heasley know.

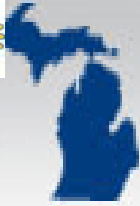
Photo above: The signing ceremony for the new Metro Detroit Rotaract Club took place at a celebration on August 30 at the group's meeting place in Southfield. There were 15 members on the application for charter.



RYLA 2010 Friday, May 14 to Sunday, May 16 at the Ridgetown Campus, University of Guelph, Ridgetown, Ontario. Rotary Youth Leadership Awards: A three-day, fun-filled weekend of leadership training, skill building, great guest speakers, great food and personal growth. Past RYLarians have become Rotaract members, Rotarians, gone on Rotary Youth Exchanges and become great business and civic leaders. Sponsor at least two students from your area schools for RYLA 2010. If your club does not plan to send local students, sponsor students nominated by other clubs. The 2009 cost was \$235 per student, including bus fee. Five clubs did this for RYLA 2009.



A Rotary club event



MICHIGAN'S DEFINING MOMENT

TAKE ACTION TODAY

The **Bloomfield Hills Rotary** invites you to a community conversation Monday evening Oct. 5 from 7 to 9 p.m. at the new Bloomfield Township Senior Service Center, 48315 Andover Road, Bloomfield Hills MI 48304. Please be our guest for an evening of conversation and civil leadership in Michigan's Defining Moment to help define an agenda for Michigan that reflects your values and priorities. The conversation will be led and facilitated by representatives from **The Center for Michigan** and they will compile the results of this conversation with hundreds of other conversations around the state to define a common ground agenda for presentation to leadership within our state. Please RSVP to Shane Cotner (248) 646-6595.

The Red Cross Rotary Club Challenge Blood Drive in honor of former Rotarian Doris Longfellow from **Brighton Rotary** took place September 21. The drive was started by longtime community supporter Doris Longfellow before she died in March after battling cancer. The drive was a competition between area Rotary clubs to attract donors. Brighton Rotary, Livingston Sunrise, Hartland and Lyon Area were all participants in the challenge.

The official results confirmed the following donor count from each club.

Brighton Rotary: 35
Livingston Sunrise: 12
Hartland: 8
Lyon Area: 1

The challenge champions were the Rotary Club of Brighton. The Rotary Club of Brighton will retain the Rotary Club Challenge cup!

CONGRATULATIONS BRIGHTON ROTARY.
66 units of blood were donated. DORIS WOULD BE PROUD

Saline Rotary Club

Saline Rotary welcomed Ginger Winter their newest member at their weekly meeting on July 2. Winter is an executive with the Mary Kay Foundation and a resident of Saline.

In the photo, (l-r) David Blough (membership chair) leads Winter's induction ceremony. Becky Pazkowski (club president) presides with Ginger Winter and her sponsor Rob Borer.

Pazkowski began her presidential year, as well, and was handed the gavel by outgoing president David Blough.

The club was chartered in 1929. The membership of 35 is made up of business and professional leaders who volunteer in the community and promote world understanding and peace. Rotary's 31,000 clubs in more than 165 countries and regions encourage high ethical standards and carry out humanitarian projects to address such issues as poverty, health, hunger, education, and the environment. Saline Rotary meets weekly at noon on Thursdays at Travis Pointe Country Club. For membership information, please contact David Blough by email at Dblough@ubat.com



Jan Loch, the newest member of the **Sterling Heights Rotary Club** was inducted and pinned by PDG Stan Sherman.



The Rotary Club of Detroit

Detroit Athletic Club, Box 6 241 Madison Avenue Detroit, MI 48226 USA

August 12, 2009

Dear Fellow Rotarians, Club Presidents, and Present, Past and Future District Governors:

The Detroit Rotary Club is pleased to remind you that preparations continue for our Centennial year starting July 2010. Since we are part of an international district, we have learned that this coincides with Rotary's beginning in Canada in 1910!!! Your participation and assistance is vital to a successful celebration. The mission of this Centennial year is to honor the past 100 years of devoted Rotary service, to assist with the eradication of polio forever, to provide other contributions to select Rotary charities, and to provide a significant gift for future years to the City of Detroit where we serve.

A gala celebration is planned to kick off Centennial events on Saturday, July 24, 2010, at the Motor City Hotel. As the "predecessor club" of Districts 6400 and 6380, we are asking for participation from all our daughter clubs by purchasing a table at the Gala and/or an ad in the event program booklet. Our Club website at www.detroitrotary.org affords you the ability to contribute with a table purchase, a sponsorship, a program advertisement, or other gift to support Rotary charities for this well-focused event. The website also offers a video spot that highlights the centennial Detroit Rotary Club and its history.

We have invited to our gala all Rotarians in the area, the Club Presidents, and District and state-wide Rotary officials, who will have the unique occasion of celebrating with next year's Rotary International President, Ray Klingensmith, who has accepted our invitation to attend on July 24, 2010. We will also be asking the Club Presidents of Districts 6400 and 6380 to join us at special weekly Detroit Rotary meetings for us to honor the guest club, which is part of our progeny. Many Detroit Rotarians have volunteered to visit clubs in these Districts to engender enthusiasm, explain more about our celebration and enlist support.

We know that we can count on you to purchase a table, to sponsor and/or place an advertisement in our Centennial publication, all for the causes of Rotary. Thank you in advance for your generous support to make Detroit Rotary's Centennial a great success.

Sincerely,

A handwritten signature in cursive script, appearing to read "Larry E. Powe".

Larry E. Powe,
President, Detroit Rotary Club
The 16th Club in Rotary International

A handwritten signature in cursive script, appearing to read "Joseph J. Berke".

Joseph J. Berke, M.D., Ph.D.
Chair
Centennial Committee

P.S. Join the party! Join the fun! Please visit our website at www.detroitrotary.org for updates.

Club No. 16, Chartered 1910

(313) 438-2355

www.detroitrotary.org

The first **Chatham Rotary Sunrise** Ribfest was a resounding success. From great weather to terrific local and world-class entertainment to a perfect venue in Tecumseh Park, to tremendous crowds and, of course, the outstanding ribs, Ribfest 2009 had absolutely something for everyone. Final estimates placed overall attendance approaching 18,000 people with many visitors telling us that came to the event on consecutive days. This new venture of Chatham's youngest Rotary club has something for everyone from a hugely popular kid's zone, a wide variety of on-stage entertainment featuring Canadian icon David Wilcox on Saturday evening, a kid's fishing derby, and a variety of vendors including six world-class ribbers. Many attendees commented that this was the best event ever in Chatham and urged us to make sure we do it again in 2010.



President Blake Vince inducted two new members into Chatham Sunrise on July 3: Ashley While (Center) and Nicole Gignac (right).



Commented club past president and spokesperson for the 2009 organizing committee Jim Nash: "We relied on the talents of members and many volunteers to put on an event that was a fantastic community experience. All weekend, you could feel the excitement in the air."

When asked if the club would be considering a follow-up event for 2010, Jim said that it was a definite go and that the dates for 2010 had just been confirmed. We are already gearing up for July 9, 10 and 11, 2010. We are talking to the vendors, sponsors, organizing numerous committees, and urge anyone who wishes to become involved to visit the club Web site at www.rotarysunrise.com for more information. The club has put together a photo collage of the entire event and it can be accessed by following this link www.rotarysunrise.com/ribfest2009acknowledgement.shtml

Ridgetown Rotary barn dance will help end polio

Well in excess of \$2,000 was raised for this first-time event put on by Ridgetown Rotary led by Rotarian Archie Dempster and Rotarian Paul Brown. Many thanks to their involvement and the support of the Ridgetown Rotary Club and Ridgetown and surrounding community.

From Archie Dempster: The President of Ridgetown Rotary Ron Bolohan asked me to head up a committee to raise \$2k for the polio campaign, as our allotment, as requested by Rotary International for the year. Rotarian Paul Brown stepped up immediately and offered to co-chair. I would estimate 150, or more, in attendance. As far as venue, Neil Rose offered his barn, gratis. His father Don, was a longtime R'tn Rotarian and his mother Barb, who was in attendance, always gives us great support. Neil works for Pioneer Seed Corn. They donated the portable toilets. The ladies of the Anglican church organised the food end of the evening. Ben and Carla VanHeeswyk, who own the local bakery, called Pinnel's, donated quite a bit of the food.



Photos and news found on Chatham Kent Times Web site

<http://www.cktimes.ca/whatsnews.html>

cktimes' reader Dennis Tatchell supplied the photos of the bands that played: Southwest Blues Review and Chatham-Kent Mountaineers; cktimes' editor John Gardiner attended, played bass and reports a highly successful evening: great work, Archie and his folks



Milan Rotary Club celebrates its diamond anniversary in style on Saturday, November 7 at Father Joe Center, 420 North Street, Milan, Michigan. The festivities begin with cocktails at 5:30 p.m. Dinner will be served at seven, with dancing to follow. The highlight of the evening will be the silent and live auctions of fine donated items, with all benefits supporting worthwhile projects in Milan and Rotary International. To contribute an auction item, please contact Tom Preston at (734) 439-2462. To view some of the art auction items collected to date, go to www.milanrotary.org/auction.php Tickets for the 75th Diamond Anniversary Celebration are \$35 per person. Corporate tables are available for \$325, which includes tickets for eight as well as a prominent mention in the printed program. To purchase tickets, please contact Hazel Proctor at (734) 439-8031 or Eduardo Enriquez at (734) 439-8410. All 6380 District Rotarians are invited to join us.



The Milan Rotary Club inducted Ben Swayze (dark shirt) as a new member in August. Ben is the Milan City Administrator and will be a strong member of the club. Far left is Tom Preston, and far right is Vern Campbell, who sponsored him. Vern presented him with The Four-Way Test and a medal; Tom gave him a Service Above Self ribbon and Rotary decal. President Hazel Proctor gave him his certificate of membership and Rotary pin.



In Memoriam



Lisa Halleran, wife of Clarkston Rotarian John Halleran, passed away. We send out condolences to John and his family. Lisa was a wonderful wife, mother, grandmother and educator. She is missed by all who knew her.



Carol Plafchan wife of Pontiac Rotarian Ted Plafchan, has lost her long battle with cancer. She will be greatly missed by all who knew and loved her. Our heartfelt condolences to Ted and his family.



Assistant Governor and Royal Oak Rotarian Jeanne Towar, lost her son Scott Bevard. Scott's very sudden passing has stunned and saddened his children, family members, and large circle of church and work friends. We send our deep felt sympathy to Jeanne and all who knew and loved Scott.



Kenneth DeLaet has passed away. Kenny was the beloved son of Blenheim Rotarian Dianna Gray and son-in-law of Chatham Sunrise Rotarian Steve Sadler. He was the loving husband of Candice and father to Mya. Our condolences and sympathy go to everyone who knew and loved this very special person.

District 6380 Status as of August 31, 2009

Rotary			YTD	2008-09	2009-10	2009-10	2009-10	2009-10	Annual Giving Per Capita Rank	Annual Giving Per Capita
International District 6380 Statistics	Membership as of Jun-09	Membership Reported to District 31-Aug-09	net gain or loss	Foundation Annual Giving (actual)	Foundation Annual Giving (Club Pledge)	Foundation Annual Giving 31-Aug-09	Foundation Restricted Giving 31-Aug-09	Foundation Permanent Fund 31-Aug-09		
Club	SAR									
Anchor Bay	23	17	-6	\$ -	\$ 2,300					\$ -
Ann Arbor	309	315	6	\$ 25,077	\$ 35,880	\$ 4,056	\$ 1,752			\$ 13.13
Ann Arbor Sunrise	11	8	-3	\$ 995	\$ 1,100					\$ -
Ann Arbor North	32	33	1	\$ 4,000	\$ 3,000					\$ -
Auburn Hills	16	10	-6		\$ 1,200					\$ -
Berkley	29	25	-4	\$ 100	\$ 2,500					\$ -
Birmingham	83	77	-6	\$ 425	\$ 8,600					\$ -
Blenheim	25	25	0	\$ 3,074	\$ 3,450					\$ -
Bloomfield Hills	30	31	1	\$ 15,300	\$ 3,105	\$ 200				\$ 6.67
Brighton	67	64	-3	\$ 5,440	\$ 6,900					\$ -
Chatham	67	64	-3	\$ 5,892	\$ 8,875	\$ 100	\$ 204			\$ 1.49
Chatham Sunrise	38	40	2	\$ 5,289	\$ 3,800	\$ 1,000				\$ 26.32
Chelsea	30	29	-1		\$ 2,700					\$ -
Clarkston	28	29	1	\$ 7,541	\$ 4,500	\$ 2,728	\$ 50			\$ 97.43
Clawson	18	18	0	\$ 2,275	\$ 1,000					\$ -
Clinton Township Sunrise	11	11	0	\$ 1,050	\$ 1,200					\$ -
Davisburg	16	16	0	\$ 605	\$ 2,300					\$ -
Dexter	32	33	1		\$ 3,828		\$ 30			\$ -
Dresden	22	21	-1	\$ 2,613	\$ 1,000					\$ -
Eastpointe	17	17	0	\$ 2,000	\$ -					\$ -
Farmington	24	23	-1	\$ 3,100	\$ 3,900	\$ 100				\$ 4.17
Ferndale	19	19	0		\$ 1,900	\$ 150		\$ 125		\$ 7.89
Fowlerville	22	23	1		\$ 2,500					\$ -
Hartland	20	18	-2		\$ 1,000	\$ 1,000				\$ 100.00
Howell	43	44	1	\$ -	\$ 2,000	\$ -				\$ -
Lake Orion	31	27	-4	\$ 2,700	\$ 1,700					\$ -
Lakes Area	19	19	0	\$ 2,932	\$ 2,300					\$ -
Livingston Sunrise	54	53	-1	\$ 6,500	\$ 5,800	\$ 5,400				\$ 100.00
Lyon Area	18	16	-2	\$ -	\$ 720	\$ -				\$ -
Milan	20	20	0	\$ 300	\$ 2,200					\$ -
Milford	32	32	0	\$ 2,000						\$ -
Mt. Clemens	81	83	2	\$ 13,812	\$ 8,400		\$ 695			\$ -
Novi	40	37	-3	\$ 111	\$ 5,740	\$ 5,000				\$ 125.00
Ortonville	11	11	0	\$ -		\$ -				\$ -
Oxford	38	38	0	\$ 3,590	\$ 4,000					\$ -
Pontiac	27	26	-1	\$ 2,375	\$ 2,000					\$ -
Richmond	34	32	-2	\$ 2,000	\$ 3,400					\$ -
Ridgetown	34	32	-2	\$ 3,500	\$ 3,795					\$ -
Rochester	93	95	2	\$ 16,880	\$ 21,150					\$ -
Romeo	10	10	0	\$ 400	\$ 1,000					\$ -
Royal Oak	42	40	-2	\$ 6,662	\$ 8,164					\$ -
Saline	32	34	2	\$ 2,710	\$ 2,000	\$ 200				\$ 6.25
Southfield	15	14	-1	\$ 200	\$ 1,500	\$ 50				\$ 3.33
Sterling Heights	28	25	-3	\$ 4,250	\$ 2,000	\$ 200				\$ 7.14
Thamesville	7	8	1		\$ 900					\$ -
Tilbury	21	20	-1	\$ 3,731	\$ 2,500					\$ -
Troy	34	35	1	\$ 1,550	\$ 1,700	\$ 200				\$ 5.88
Utica-Shelby	13	12	-1	\$ 1,800	\$ 1,596	\$ 200				\$ 15.38
Wallaceburg	11	10	-1	\$ 1,000						\$ -
Warren	27	27	0	\$ 2,025	\$ 2,700					\$ -
Waterford	23	23	0	\$ 6,200	\$ 3,600	\$ 100				\$ 4.35
West Bloomfield	22	22	0	\$ 1,039	\$ 2,100					\$ -
Ypsilanti	21	19	-2	1550	\$ 3,565					\$ -
District 6380										
District Total	1870	1830	-40	\$ 174,593	\$ 203,068	\$ 20,684	\$ 2,731	\$ 125		
			Per Capita ->	\$ 91.75		\$ 11.06				