



# **The Rotary Community Hub**

**Since 2010, our 40-member club has invested over \$600,000 dollars into local organizations, community programs and civic improvement projects, and contributed \$44,000 to national and international initiatives. We have too many volunteer hours to count, and that's in just the last seven years.**

**In 2017 we set our plans to develop the Rotary Community Hub. Our Legacy Project. The vision for this project was cast almost ten years ago – to build a Rotary landmark, to establish a social enterprise for revenue generation and an investment source for community capacity building.**

**We are renovating a 7,000-square foot, century-old building to be a connection place, with more than a dozen organizations and programs, meeting rooms and an outdoor green space for gatherings. A place to go to get help, or to give help.**

**The Hub will be designed as a welcoming community space, a safe place, a no wrong door for all people. A place where community collaboration will flourish.**

**Our Legacy Project is about life and living. It's about learning from the past, living in the present, and building for the future.**

# The Original Vision

## **1. Construct a Rotary landmark**

- Brand awareness
- Meeting space

## **2. Establish a permanent fundraising source**

- Earn revenue from leasing office space to a core group of NGOs, short term/ad hoc office rentals, and community meeting rooms

## **3. Support community capacity building**

- More services can be offered and existing services can expand



The Hub model was evolved from the Community Resource Centre established by Community Connection in 2002. At its peak, the Community Resource grew to 9,500 square feet shared by 20 organizations and programs, and comprised some back office shared services.

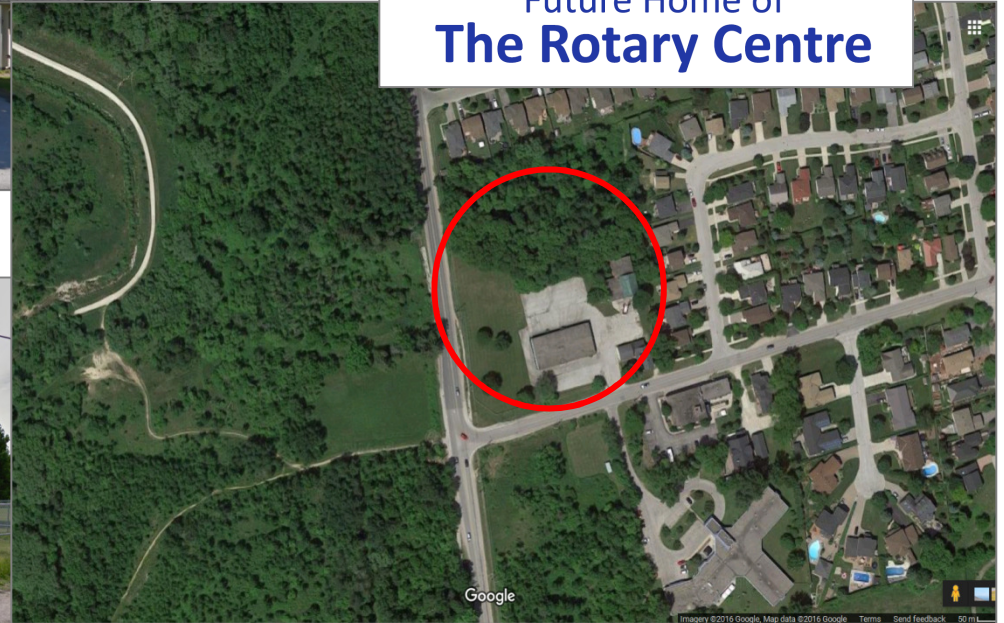




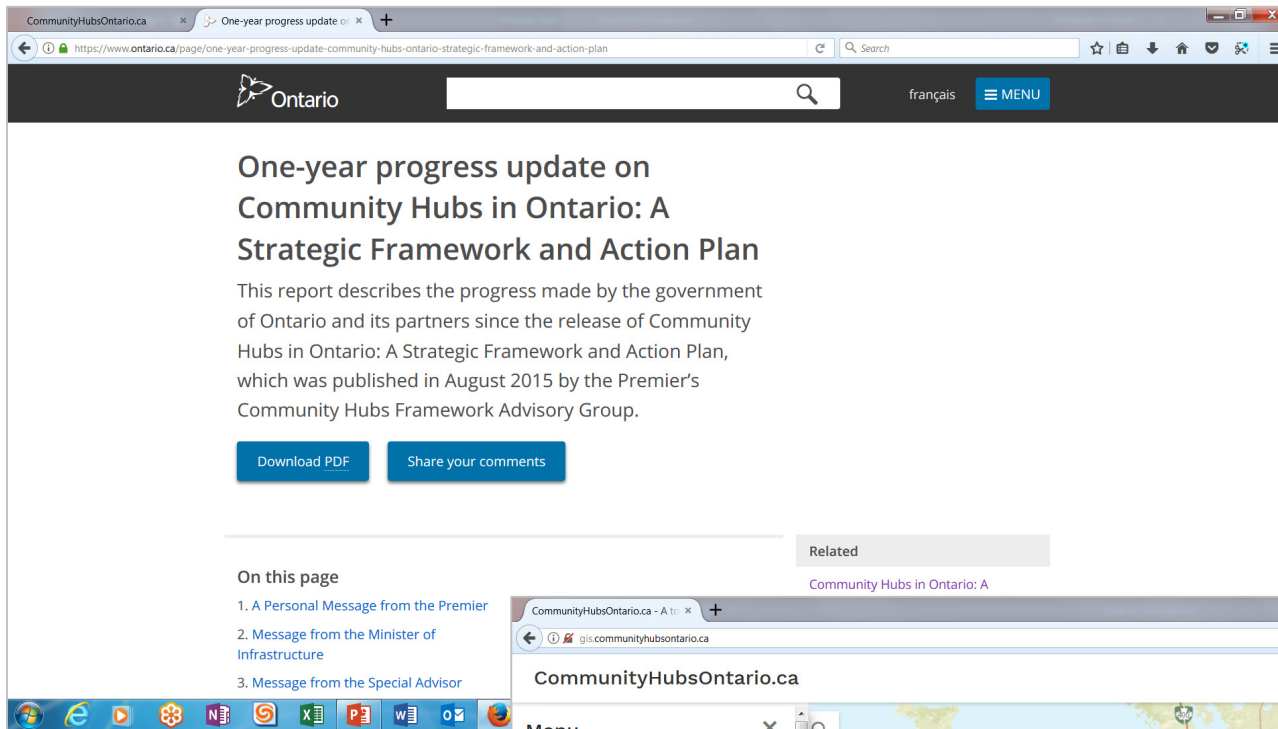
**Saunders Building**  
199 Campbell Street



Future Home of  
**The Rotary Centre**

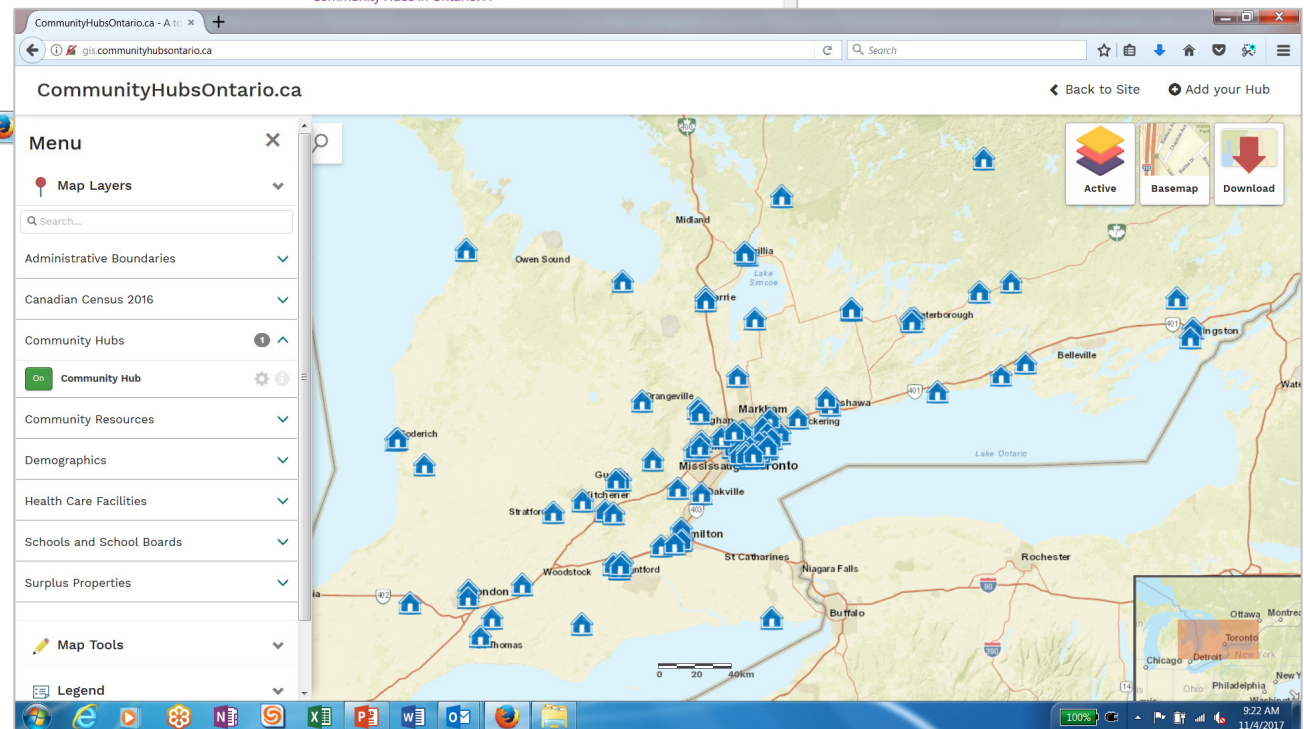


In February 2017, Community Connection moved half its operations into 199 Campbell Street to provide cash flow into the project. In July 2017 the Rotary Club of Collingwood moved its meetings into the location, and by 2018, there were 13 organizations and groups utilizing the shared space.



Meanwhile, the Provincial Community Hubs Framework and Action Plan were being developed.

Across Ontario, hubs are connected through an online space.



## Collingwood has several hubs...

### Youth & Technology Centre

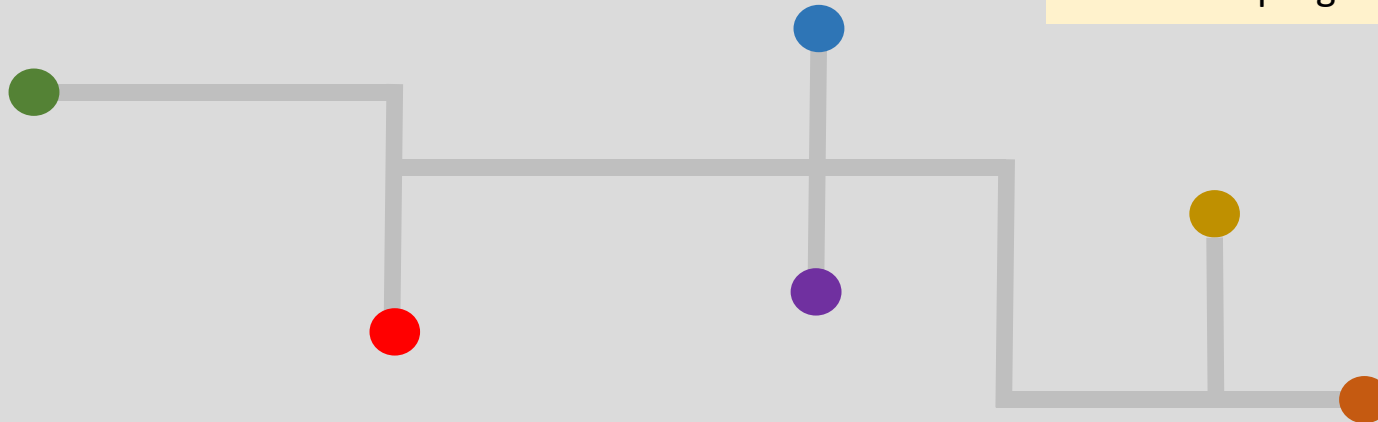
- 76 First Street
- Youth 12-18
- Social & emotional skill-building

### Leisure Time Club

- 100 Minnesota Street
- Seniors 50+
- Social & recreational activities

### Community Resource Centre

- 275 First Street
- All ages
- Common roof of community & social service programs



### Early Years & Family Centre

- 250 Peel Street
- Children 0-6 & families
- Social, skill-building, resources

### Family Y

- 100 Hume Street
- All ages
- Recreation & fitness

### CGMH & Family Health Team

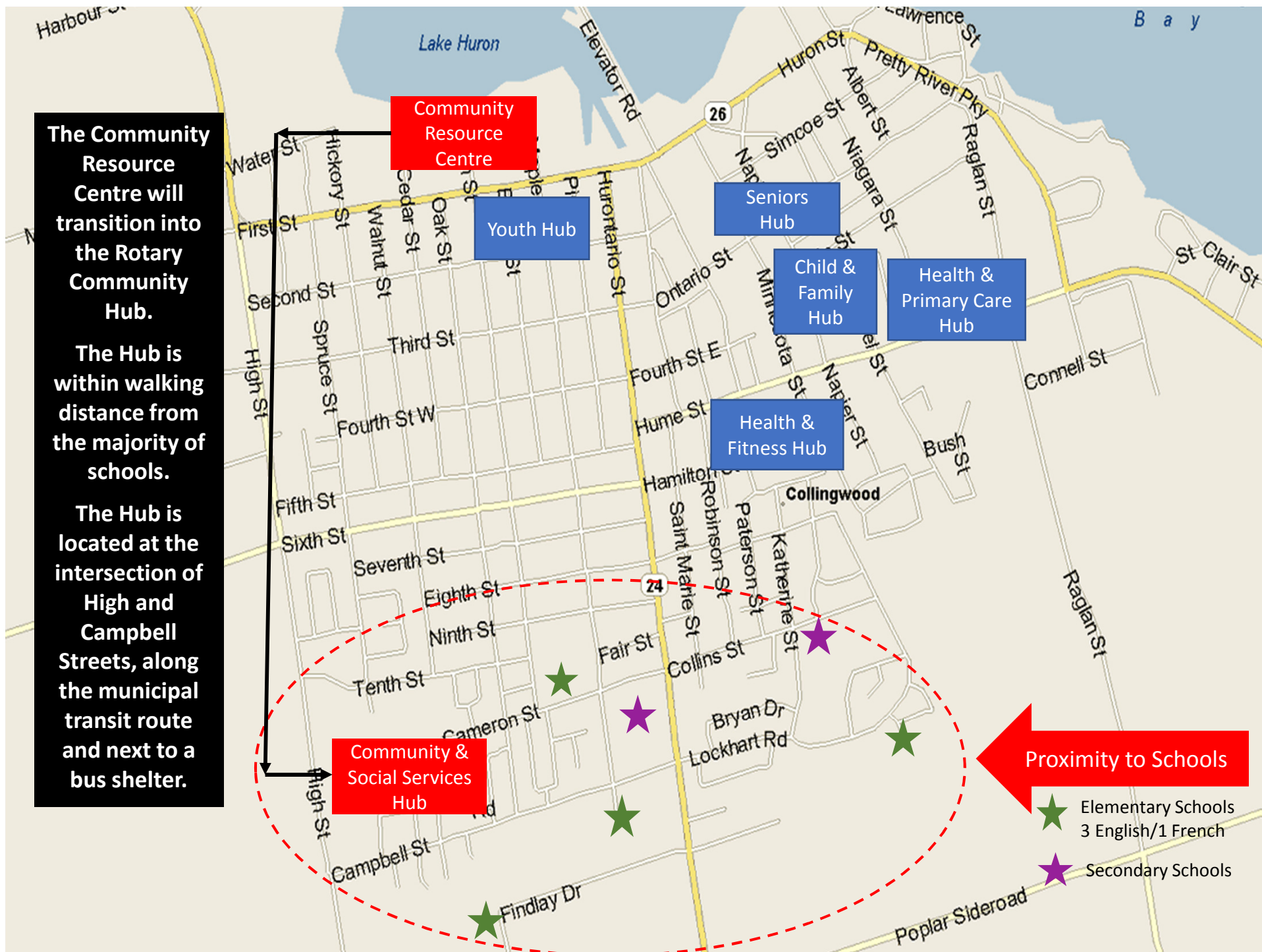
- 186 Erie + 459 Hume Streets
- All ages
- Primary health care



**The Community Resource Centre will transition into the Rotary Community Hub.**

**The Hub is within walking distance from the majority of schools.**

**The Hub is located at the intersection of High and Campbell Streets, along the municipal transit route and next to a bus shelter.**



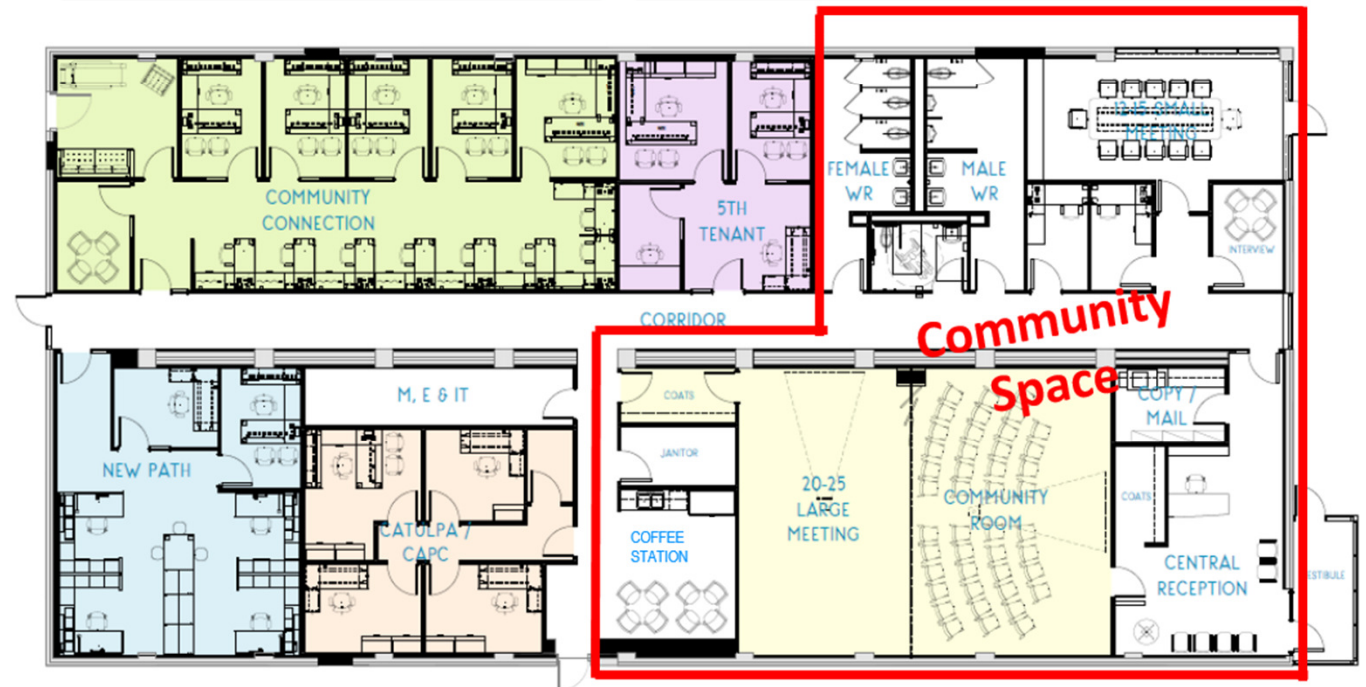


Current floor plan →



**DRAFT**

Future floor plan →



DESIGN STUDY - PREFERRED OPTION

sightline  
DESIGN STUDIO

DAYMARK  
DESIGN INCORPORATED

# Hub Tenants & Services

## **Community Connection/Volunteer Connection/211 Ontario – 14 employees**

- Clientele - general public
- Regional call centre, navigation for community, social, health, government services
- Volunteer centre, group meetings, workshops
- Walk-in service navigation for residents accessing community services

=

## **New Path – 7 employees**

- Clientele - children, youth and adults with mental health challenges
- Children's mental health centre – Collingwood satellite office
- Partner abuse program for women

## **Catulpa Community Services – 2 employees**

- Clientele - families with school aged children with developmental disability
- Developmental Services agency – Collingwood satellite office

## **Community Action Program for Children – 2 employees**

- Clientele – vulnerable families with children to age 6
- Collingwood satellite office

# Hub Tenants & Services

## **Brain Injury Services of Simcoe Muskoka – 2 days/week – 2 employees**

- Clientele – adults with acquired brain injury
- Adult day programs (group) Mondays and Wednesdays

## **Catholic Family Services Counselling by appointment – 2 days/week – 1 employee**

- Clientele – general public

## **Catholic Family Services Walk-in Counselling clinic – 1 day/week – 1 employee**

- Clientele – general public

## **Community Legal Clinic by appointment – 1 day/bi-weekly – 1 employee**

- Clientele – general public

## **Home for Life – 5 days/wk – 1 employee**

- Clientele – patients referred from primary care & individuals you need help to stay in their home as long as possible



# Current Groups & Networks

- Rotary Club of Collingwood
- Seniors Computer Club
- Seniors Learning Café
- Alcoholics Anonymous
- Volunteer Coordinators Network
- Non Profit Network
- Food Insecurity Task Group

# Our Legacy Project



Contact us at [www.RotaryCollingwood.org](http://www.RotaryCollingwood.org)