



# NEWSLETTER

## DECEMBER IS FAMILY MONTH

*By DG Rick Manganello*



### Why is “Family” a focus of Rotary?

- Enjoyment
- Retention
- Recruitment
- Foundation support

### Who is our Rotary Family?

- Fellow Club Members
- Spouses, Children, Parents
- Spouses of Deceased Rotarians
- Youth Exchange Students & families
- Interactors/Rotaractors/RYLarians
- GSE team members/Ambassadorial scholars/Peace Fellows

### How do we involve our own families in Rotary?

- At special family oriented social events
- At club meetings for special programs
- Assistance at fund raisers
- In community service projects
- Hosting Youth Exchange and GSE teams

### How do we care for fellow Rotarians like family?

- Remember birthdays and anniversaries
- Assist when they are sick, lonely, or having difficulties
- Share their grief during and after a death in the family

- Celebrate at Births, Weddings, and Graduations

### How can we care for spouses of deceased Rotarians?

- Invite them to join Rotary
- Invite them to special club events
- Send them “The Rotarian” magazine
- Send them club newsletters
- Call on them regularly
- Celebrate their birthdays

### How can Youth Exchange students become family members?

- Involve other club members to invite them to join them for family functions
- Communicate with the student’s family back home
- Lifetime contact after the student has returned home
- Invite RYLA, Interact and Rotaract students to join our Rotary family?
  - By Participation in:
    - Projects, Fundraisers, Club and District Social events
    - Christmas parties, change-overs
    - District Conferences, Assemblies
- Have them attend other Interact, Rotaract, and RYLA activities

### How do we keep Foundation Alumni involved in the family?

- Invite them to join Rotary
- Invite them to speak at meetings
- Ask them to participate in club projects
- Communicate regularly when abroad
- Welcome them upon their return
- Inform them



---

## FAMILY MATTERS BY DAVID LIDDIATT, RI DIRECTOR 2009-11

From Director David's digest in **rotary**today [www.ribi.org](http://www.ribi.org)

As the first decade of the 21st Century comes to a close, families come together to celebrate Christmas and enjoy the sense of happiness and wellbeing which only families know and which only families can generate. It is a time for messages of goodwill and peace, of hope and world understanding, as time for presents and gifts, of carols and concerts and yes, turkey and pudding.

There is no bigger family than the family of Rotary, bringing, as it does every day of every month of every year, another dimension and significance to the life we share.

### *In the Family of Rotary*

F

#### ***Is for Friendship.***

The foundation upon which Rotary service is built, and is, inevitably, the motivation which drove you when you joined your club and committed yourself to share a life of service.

A

#### ***Is for Action.***

Locally, nationally or internationally. In your club, your district, in RIBI or throughout the world. Ours is a family of active service not lip service.

M

#### ***Is for Membership.***

The family of Rotary extends through your club, district, RIBI and RI itself. The 1.2 million members worldwide are only the beginning. 170,00 Rotaractors and 250,000 Interactors are examples of the extended family along with all those who have participated in The Rotary Foundation educational programs, scholars and GSE team members who, by their actions, have united and strengthened the bonds between cultures, religions and ethnic groups.

I

#### ***Is for Integration not Isolation.***

The family of Rotary should be an integrated part of our program of service and development, not a segregated identity based on yet another easy title.

L

#### ***Is for Love.***

The translators would have us believe that St Paul's letter to the Corinthians spoke of love and charity as one and the same. As we all know, charity begins at home but then expands throughout the world. Throughout the Rotary foundation, the family of Rotary knows no bounds, embracing the blind, the deaf, the thirsty, the crippled, the disadvantaged.

Y

#### ***Is for Youth, not for Yesterday.***

We can be proud of our family history and our achievements, many of them truly inspirational, but don't live in the past. We have created the fifth avenue of service, New Generations. We need to make it happen.



---

## THE 2011 ROTARIAN MAGAZINE PHOTO CONTEST IS NOW OPEN

By DG Richard Manganello

Do you have a great shot from a fundraiser, international project, the RI Convention, or a local club event?

The Rotarian's 2011 photo contest is now underway. Enter up to three photos that illustrate the spirit of Rotary. The best photos will appear in the June 2011 issue of the magazine. The contest runs through March 31, 2011.

Please visit the following link on the Rotary website for more information.

[http://www.rotary.org/en/MediaAndNews/News/Pages/071119\\_news\\_photocontestpromo.aspx](http://www.rotary.org/en/MediaAndNews/News/Pages/071119_news_photocontestpromo.aspx)



---

## THE FAMILY OF ROTARY

By Carl-Wilhelm Stenhammar, Chair, Rotary Foundation Trustees

December is Family Month. To many Rotarians, the family of Rotary means spouses, brothers, sisters, parents and children. Their work for Rotary is very much appreciated. However, to me, as long as we do not have a rotary family membership, relatives are not the family of Rotary.

The Rotary Foundation is a huge part of the family of Rotary. All of the money raised is channelled through The Rotary Foundation. There are large sums of money coming every year to the Annual Programs Fund, the Permanent Fund, the Rotary Peace Centers Major Gifts Initiative, and Rotary's US\$200 Million Challenge.

Even though money raising efforts for these funds are

separate, they are all linked together. Annual giving is the core of our business. The Permanent Fund is geared toward those Rotarians who can afford to give large sums and as a support to the Annual Programs Fund. The Rotary Peace Centers Major Gifts Initiative was also launched to approach those Rotarians who can give more. Thus, it is apparent how these three fundraising events depend on one another. In addition, we

have Rotary's US\$200 million Challenge, which affects the annual giving, thus also the two other fundraising programs.

It is important that, when we give money, we must donate to all of the above initiatives. By remembering this, we can continue Building Communities, Bridging Continents through Service Above Self.





## JANUARY IS ROTARY AWARENESS MONTH

From Rotary International News - 3 January 2011

Awareness is an important part of The Rotary Foundation's work. It is important that members are aware of The Rotary Foundation Goals 2010-11: polio eradication; the Future Vision Plan; Every Rotarian, Every Year; and the Permanent Fund, says Foundation Trustee Chair Carl-Wilhelm Stenhammar.

We must also be aware of the Rotary Centers Major Gifts Initiative in support of our Rotary Centers for International Studies in peace and conflict resolution and our USD 200 Million Challenge.

It is important to know that we are 1.2 million Rotarians in approximately 200 countries or geographical regions. Also that we are divided in geographical zones, each of which has one or more regional Rotary Foundation coordinators, assistant regional Rotary Foundation coordinators, and Rotary Foundation alumni coordinators.

Furthermore, that The Rotary Foundation finances are totally separate from those of Rotary International and that The Rotary Foundation has its own board of 15 Trustees, headed by a trustee chair. And there are seven regional offices in Argentina, Australia, Brazil, India, Japan, Korea, and Switzerland. Together with the headquarters in the United States, they are available to serve not only Rotary International but also The Rotary Foundation.

Another part of The Rotary Foundation awareness is the sharing of information outside our organization. We are a group of leaders with a superb network. It is time for us to let the world know about all good things that we have accomplished over so many years. Rotarians have the opportunity to create – and must create – awareness regarding world problems and how they can be solved by Building Communities – Bridging Continents through Service Above Self.

### Club Events

Jan 01, 2011

#### **Killington-Pico Rotary Annual Ice-Out Contest**

WIN UP TO \$20,000

To Enter: [www.KillingtonPicoRotary.org](http://www.KillingtonPicoRotary.org)

Feb 05, 2011

#### **Winter Carnival - Movie & Sundae Night**

Rotary Club Room, Town Hall, Charlestown, NH

Feb 06, 2011 8:30 am - 12:30 pm

Rotary Club of Hollis-Brookline

#### **The Big Game Family Brunch on Super Bowl Sunday**

Alpine Grove Banquet Facility

Route 111A, Hollis, NH

Tickets: [www.HBRotary.org](http://www.HBRotary.org)

#### **Feb 12 - 13, 2011 - 32<sup>nd</sup> Meredith Rotary Fishing Derby**

Details: [www.MeredithRotary.org](http://www.MeredithRotary.org)

Feb 15, 2011 6:30 - 9:30 PM

#### **Rotary Club of Nashua West 40<sup>th</sup> Anniversary Celebration**

Crowne Plaza Hotel, Nashua, NH

<http://www.clubrunner.ca/CPrg/Home/homeD.asp?cid=2946>

Contents	Page	Contents	Page
December is Family Month	1	RI Board Reinforces Strategic Priorities, Goals	6
Family Matters	2	Piano Man	7
The 2011 Rotarian Magazine Photo Contest	3	Your Passport to the World of Rotary	8
The Family of Rotary	3	Support the Paul Harris Memorial Garden	10
January is Rotary Awareness Month	4		
The RI President's Monthly Message	5		



## THE RI PRESIDENT'S MONTHLY MESSAGE

### Test time!

We are at the halfway point in this Rotary year, and now is the time to test the strengths and weaknesses of our clubs. Perhaps a strange idea for some Rotarians, but how else will we learn how the activities and programs of our respective clubs match up to those of other clubs in our districts – and around the world? Therefore, I encourage all Rotarians – not only the club officers – to become involved in evaluating their clubs during the month of January.

The [Presidential Citation program](#) for 2010-11 has been designed as a score sheet for all the Avenues of Service. It also is a checklist for many of the activities and programs conducted by most clubs. Club presidents are required to complete the score sheets and submit them to their district governors by 31 March 2011 for their clubs to be eligible for the Presidential Citation awards. The scores should be shared with all club members either as written reports or as presentations at club meetings.

Starting work on the Presidential Citation test in January will provide an opportunity to correct any discovered deficiencies in club activities before the submission deadline of 31 March. It also will cause the club leaders to notice that a new Presidential Citation with Distinction award is available this year for clubs with a good balance of activities in all Avenues of Service.

This year I am recommending that all clubs review their practices and procedures to see if they are truly best practices or merely traditional practices. Annual evaluations of our clubs are certainly best practices, and more Rotarians than usual need to be involved in the evaluations for their clubs. The Presidential Citation score sheets are a good place to start the process. How else will we know if our clubs really are becoming Bigger, Better, and Bolder?

RI President  
Ray Klinginsmith



### Calendar

Feb 10, 2011

Pre-PETS

United Church Bellows Falls, VT

Feb 15, 2011

Pre-PETS

Little Red Schoolhouse, Wallingford, VT

Feb 17, 2011

Pre-PETS

Old Town Hall, Bow, NH

Feb 22, 2011

Pre-PETS

John O'Leary Center, Merrimack, NH

Mar 10, 2011 - Mar 12, 2011

PETS

Apr 04 - May 04, 2011

GSE Team to Turkey

Apr 09, 2011

District Assembly / Interact Conference

May 21, 2011 - May 25, 2011

2011 Rotary International Convention,  
New Orleans

Jun 03, 2011 - Jun 05, 2011

District Conference - Mystic, CT

Jun 27, 2010

Changing of the Gavel  
Little Red Schoolhouse



---

## RI BOARD REINFORCES STRATEGIC PRIORITIES, GOALS

BY ARNOLD R. GRAHL ROTARY INTERNATIONAL NEWS -- 30 NOVEMBER 2010

At its November meeting, the RI Board approved a number of recommendations and actions to reinforce the priorities and goals of the [RI Strategic Plan](#).

The changes, which include endorsing the concept of flexible attendance and meeting requirements and allocating US\$4 million for Public Relations Grants, are designed to keep Rotary vibrant and attractive to current members and prospective members from younger generations.

"By focusing on strategic issues throughout the week, the Board was able to reach consensus on several strategic decisions, which constitute progressive moves by the RI Board," says RI President Ray Klinginsmith.

Among other actions, the Board

- Agreed to the concept of amending RI policy on meeting attendance, meeting options, and member termination in order to support and strengthen clubs by allowing them more flexibility. The changes will require revisions to the RI Constitution and the Standard Rotary Club Constitution in the form of legislation submitted to the 2013 Council on Legislation.
- Agreed to fund US\$4 million in PR grants annually, starting in 2011-12 for at least three years, to advance the strategic priority of enhancing public image and awareness.
- Supported the creation of an annual Rotary Citation beginning in 2012-13 that would replace future Presidential Citations. The new citation would be based on clubs achieving predetermined goals that are aligned with the clubs' and RI's strategic direction.
- Agreed to transform RI programs to a "resource and support" model to help clubs and districts in their service efforts and advance the strategic priority of focusing and increasing humanitarian service.
- Agreed to replace the vision statement in the RI Strategic Plan with a core essence statement, which uses more contemporary language and better expresses what Rotary is and does.
- Agreed to conduct four new pilot programs -- associate member, corporate member, satellite clubs, and innovative and flexible Rotary clubs -- to promote membership diversity and improve recruitment, beginning 1 July. Two hundred clubs will be accepted for each three-year pilot.
- Encouraged districts with more than 100 clubs and over 4,000 members to split into two or three new districts as early as 1 July 2012.

The Strategic Planning Committee suggested many of the changes to help move the organization toward an emphasis on active and engaged membership.

"Rotary must change its culture from one of attendance to one of engagement," says RI Director Stuart B. Heal, chair of the Strategic Planning Committee. "It is our belief that in the next decade this must become our culture as we become more innovative and continue serving around the world."

Says Klinginsmith: "It was a historic week for Rotary."





## PIANO MAN *By Karen Keegan*



He says it's the word puzzles, but I'm pretty sure 80 years of tickling and pounding the ivories at least once or twice a week might have something to do with Rollie Breault's apparent inability to age past 70.

Well, yes, but plenty of nonagenarians "carry on" these days. What separates the few like Breault from the pack, though, is a rare blend of stamina, agility and proficiency that may come from doing a lot of puzzles, but more likely, from a lifetime of sitting down and making people smile the minute his fingers hit the ivories. "Ah, we'll miss him, we'll miss his smile," said Jack Colon, the day chef at Nashua "Everyone's amazed I'm still carrying on," the affable Breault said recently while preparing for an event many thought would never come: his final Nashua Rotary Club meeting at the piano.

Country Club, the Rotary's longtime meeting place. "Not just because of his music, but because he's just a really nice guy."

Read the rest and watch the video at [NashuaTelegraph.com](http://NashuaTelegraph.com).

Staff photos by Don Himself





---

## YOUR PASSPORT TO THE WORLD OF ROTARY

*By DG Rick Manganello*



**Mystic Marriott Hotel and Spa**

I first began to really understand Rotary when Janet and I went to our first District Conference – “The Hiatus in Hyannis.” It was the masterpiece of District Governor 2000-2001 Jean-Louis Nicknair. This Hyannis Conference was the first time I became immersed in the many wonderful community and international projects that our sixty wonderful clubs are involved in. The energy, creativity and selflessness of Rotarians were everywhere. Four years earlier I had joined a wonderful Rotary Club in search of business colleagues who could help me find my way in our area. That had worked very, very well. In Hyannis, however, I learned how very much more there was to Rotary. It was a transformational experience which has enriched

my life. Two years later I became Club President, and I’ve continued to be engaged in Rotary’s spectacular service opportunities ever since. Janet and I have been to eight District Conferences since. We try hard never to miss one.

June 3 – 5 at the Mystic Marriott Hotel in Groton Connecticut, you will have the chance to similarly enrich your Rotary experience. Whether you are a first time conference attendee or an experienced one, it will be a chance to celebrate what Rotary has meant in your life and what more it can mean in your future. It will consist of three plenary sessions celebrating the service successes of the sixty superlative Clubs in District 7870. It will also feature fun filled dinner events on

Friday and Saturday evenings. Picture in your mind’s eye the best speakers you’ve heard and the finest Rotarians you have met. In Mystic you will spend three wonderful days mixing with 300 of the best of them.

In addition to this stellar conference, the Mystic area is filled with exciting things to see and do. On Saturday June third you will have the afternoon off to savor what the area has to offer. The Mystic Seaport is one of the finest open air museums in the world with special emphasis on the New England Whaling Industry and the era of slave ships. In addition, there is the Mystic Aquarium, the Groton Submarine base and much, much more.





---

## YOUR PASSPORT TO THE WORLD OF ROTARY (CONT.)

By DG Rick Manganello



For comprehensive information about the Mystic area, check out [www.Mystic.org](http://www.Mystic.org). For information about the Mystic Seaport, go to [www.mysticseaport.org](http://www.mysticseaport.org). For the venue Hotel its [www.MysticMarriott.com](http://www.MysticMarriott.com) which includes a link to the onsite, full-service Elizabeth Arden Red Door Spa. Mystic is such a vacation Mecca, you'll certainly want to

stay longer for fun. The discounted hotel rate of \$162.40 (including all taxes) is available to you individually for three days before and three days after the conference.

The conference rates will be \$690 for a couple or \$525 for a single. This includes two nights lodging at the Mystic Marriott, Friday Dinner, Saturday Breakfast and Dinner, and Sunday Brunch as well as refreshment breaks during the conference. Saturday lunch is on your own while you enjoy the area.

For golf aficionados, there will be a friendly golf tournament with other Rotarians. Awards and prizes will be presented at the conference. Cost for the tournament will be \$100 per player including lunch.





## Support the Paul Harris Memorial Garden at "The Little Red School House"

By DG Rick Manganello



The District 7870 Foundation has plans to build a memorial garden on the grounds of the "Little Red School House" in Wallingford, Vt., the boyhood home of Paul Harris. A brochure explaining the garden may be found in the left hand column of the District 7870 website Home Page. Please consider donating a "brick" in memory of a family member or friend possibly as a holiday gift.

### Organization and History

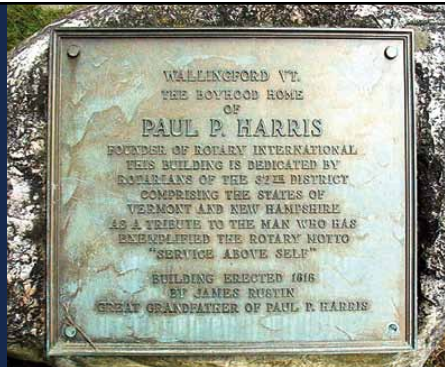
In 1818 the great-grandfather of Paul Harris, Founder of Rotary International, built "The Old Chapel Building." In 1928 District 37 bought this historic building. In 1933 it was dedicated as "The Little Red Schoolhouse." Paul Harris returned to Wallingford for the dedication ceremony.

The cherished "Little Red Schoolhouse" was built in the town where Paul Harris grew up and learned some of the most important values of his lifetime. Those values now form the basis of the worldwide service organization he established.

Today, the Schoolhouse acts as a historic site that stores and displays Paul Harris memorabilia and is the meeting place of the Wallingford Memorial Rotary Club.

The building also provides space for a tuition-free preschool for local children with a focus on social and academic growth, giving them the skills necessary to begin Kindergarten and prepare them for private and public schools.

The Wallingford Rotary club meets regularly at the Little Red Schoolhouse



### Rotary International

With more than 1.2 million members including professional, business and community leaders around the world, Rotary International is a humanitarian service organization. Dedicated to high ethical standards, Rotary International strives to encourage goodwill and peace in the world.

Today, there are over 33,500 Rotary clubs in over 200 countries. With the motto "Service Above Self", Rotary's main goal is to help build goodwill in the community, the workplace, and throughout the world.

ROTARY DISTRICT 7870 FOUNDATION



### The Little Red Schoolhouse

in Wallingford, Vermont USA

The Boyhood Home of Paul P. Harris  
Founder of Rotary International

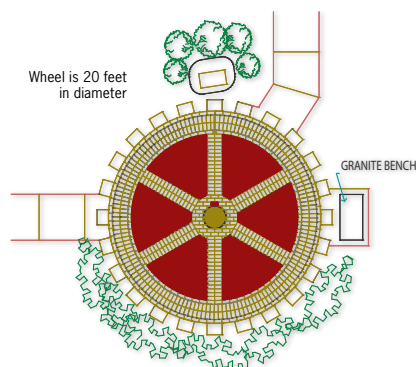


## Understanding Why The Schoolhouse Is Important To Rotarians



The Little Red Schoolhouse has been supported by local Rotarians for over 80 years. Escalating maintenance costs demand a larger commitment to maintaining and preserving the facility.

The Rotary District 7870 Foundation has taken ownership of the Little Red Schoolhouse and, with onsite assistance from the Wallingford Rotary Club, will protect and maintain the Schoolhouse.



## Paul Harris Memorial Garden

This diagram depicts the lay-out of the Memorial Garden being constructed on the grounds of the Schoolhouse with the Rotary Wheel as the centerpiece. You may purchase engraved bricks, engraved pavers, or a Vermont granite bench — a wonderful way to permanently honor a prominent Rotarian in your club, a past president or governor, or a loved one.

### How You Can Help

Please help us by supporting this historical property, through your financial contribution. You may make a tax-deductible donation or purchase a brick or other item for the Paul Harris Memorial Garden. The Rotary District 7870 Foundation is a non-profit, tax-exempt IRS 501(c)(3) charitable organization.



☒ **Yes** I want to support the Little Red Schoolhouse in Wallingford, Vermont.

Enclosed is a gift of: ☐ \$25 USD ☐ \$35 USD ☐ \$50 USD ☐ \$100 USD ☐ \$150 USD ☐ Other: \_\_\_\_\_

#### Paul Harris Memorial Garden Rotary Wheel Prices

- ☐ Bronze Rotary Wheel in center with recognition plaque ..... \$10,000
- ☐ Vermont Granite Bench with recognition plaque ..... \$3,500
- ☐ Engraved Concrete Pavers — gear teeth 12" x 16" ..... \$1,500
- ☐ Engraved Concrete Pavers — spokes 4" x 8" (3 lines, 18 characters each) ..... \$300
- ☐ Engraved Red Bricks — between spokes 4" x 8" (3 lines, 18 characters each) ..... \$200

Please make your selection above and indicate the inscription that you wish engraved. There is a maximum of three lines, 18 characters on each line on the pavers and bricks.

Line 1: \_\_\_\_\_  
Line 2: \_\_\_\_\_  
Line 3: \_\_\_\_\_

Make checks payable to: **Rotary District 7870 Foundation**

Mail to:  
**Rotary District 7870 Foundation**  
**Alan Kanegsberg, Treasurer**  
**9 Old Coach Road, Bow, NH 03304 USA**

Name \_\_\_\_\_  
(As you wish it to appear in a donor list)

Address \_\_\_\_\_

State \_\_\_\_\_ Postal Code \_\_\_\_\_ Country \_\_\_\_\_

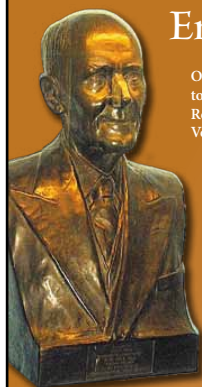
Phone \_\_\_\_\_

Email \_\_\_\_\_

To make a secure on-line credit card contribution  
log on to [www.rotary7870.org](http://www.rotary7870.org)  
MasterCard, Visa, and American Express cards are honored.

*Thank you for your generous gift!*

## Endowment



Our goal is to build an endowment to protect and preserve the Little Red Schoolhouse in Wallingford, Vermont where Rotarians and friends of Rotary from around the world come to visit. We believe that this historic building in the town where Paul Harris gained the values that created Rotary International, is one of the most important historic Rotary landmarks.

This is why we need your help.

