

**Newsletter**  
**NOVEMBER 2014**

## GOVERNOR'S MESSAGE

*By Val Callahan*

Rotary founder **Paul Harris** began with only three colleagues in 1905. They rotated offices, hence the name "Rotary." Their first outreach was to build clean "comfort stations" for Chicago. One could never have imagined 109 years ago that Rotary would become the largest service organization in the entire world – with 1.2 million members in 200 countries and territories, and with more than 33,000 clubs worldwide.



Rotary International's current leader, **CK Huang**, from Taiwan has established the theme for this year as "Light Up Rotary." It is based on the saying by Confucius, "It is better to light one candle than to sit and curse the darkness."

Today, Rotary focuses on six areas of service: peace and conflict resolution; disease prevention and treatment; water sanitation and hygiene; maternal and child health; basic education and literacy; and, economic and community development.

One hundred and nine years after Paul Harris founded this organization, we are still building clean bathrooms. While that may not be very glamorous, it is quite needed. Research indicates that diseases migrate through contaminated water. That falls within the focus on disease prevention and treatment.

Our signature focus and worldwide project is to eradicate polio. No other service organization has ever embarked on such an audacious goal. If you think that attaining our goal will be easy, inexpensive, or safe, think again. We've worked on this for more than 25 years. We may reach this goal by 2018. And no, this goal is not easy, or inexpensive. Sometimes, it's not even safe. From day one, eradication of this disease has been challenging and costly.

Tragically, some of the workers who were dispensing IPV – inactivated polio vaccine – were murdered in Pakistan and Nigeria. It's a credit to every Rotarian in the world that we do not give up this fight to end polio. We are going to continue to raise the millions of dollars that it will take to eliminate polio myelitis from the face of the Earth. We are going to continue to send volunteers to remote areas of the world, to inoculate children and give them a little pinky, which proves they've been vaccinated.

In addition to District 7910's continuing polio-eradication efforts, we are going to have four global and

26 district projects this year. One of our global projects involves working with a school in Haiti. Another one involves working with a girls' school in Calcutta, India. So far, we've attained an average donation of \$121 per D7910 member to The Rotary Foundation. During this year, we hope to surpass that, and reach at least \$125 per member in order to fund all of the projects we have in queue. As a result, we're looking for an average of \$4 more per member to achieve our annual goal. Many of us, including me, spend more on tolls in any given week. Please know that every bit of your contribution goes a long way.

At the local level, we have some outstanding and inspiring guest speakers. Our Foundation Committee chair is **Roy Balfour** (shown, right), of the Rotary Club of Shrewsbury. That committee is the engine driving the critical work we do, and Roy helps to fuel that engine.

**Ralph Hammond** (shown, left), of the Bedford club, is our Foundation Grants Committee chair. He is an enthusiastic speaker who brings great passion and dedication to D7910. (See his article, "2014-'15 Grant Status Report," on page 9).



This year, our Membership Committee chair is Dr. **Satya Mitra**, immediate past president of the Worcester club. (He's shown, right, posing with **Deepa Willingham**, past governor of D5240). I have worked alongside Satya, whose energy is infectious. Before he set to work heading membership, the Worcester club was a 49-person group. Once he set his sights on the goal, he enrolled 83 new members over the course of just one year. Worcester is now 132-people strong. That means he is responsible for having recruited 63 percent of the entire Rotary Club of Worcester. Talk about lighting candles! I hope he serves as inspiration for each one of you to consider how much you can contribute to your own club. Please consider inviting Satya a keynote speaker – he's phenomenal!



Last year, our district had 1,518 members with a net gain of 43. This year, we have 1,604 members with a net gain of 86. These steady gains prove that our public-image work and our membership efforts are paying off.

We have so many goals. We're working with teams to improve the district's website and develop its public image. We'll be working with **Rotary Youth Leadership Awards (RYLA)**, and we'll be working to make weaker clubs stronger. We're going to be working with **Stop Hunger Now**. We'll work with **Gift of Life New England**, which helps children from under-developed countries to get life-saving cardiac care. We'll be working with **Days for Girls**, so that girls in underdeveloped countries can go to school every day of the month. And, we'll be working with **Group Study Exchange (GSE)**, from Venice, Italy.

Let's work together to continue to light candles, instead of cursing the darkness. Together, all of us can light up Rotary.

### Foundation Forum Shows Power of Rotary

Thank you to the more than 90 Rotarians throughout District 7910 who attended our **2014 Foundation Forum** on November 5 at the Beechwood Hotel in Worcester. The power of Rotary truly shines when clubs work together on a common cause. The Rotary Foundation (TRF) is the financial engine to help you succeed.



During this year's Foundation Forum, panelists from across the district shared how they used TRF for their projects. Attendees also got to share their own projects and experiences, and learn how they can support and tap into TRF for greater success.

Thank you one and all for making this year's Foundation Forum a huge success!

[Click here](#) or on image for photos of the Foundation Forum, taken by **Skip Doyle** of the Rotary Club of Northborough.

### **Pat Doyle to be Officially Announced as '16-'17 DG on December 7**

**Pat Doyle** (shown, right, with her husband, **Skip Doyle**) will be officially announced as **2016-'17 District Governor** during the [District Holiday Party](#) on Sunday, December 7 at Tower Hill Botanic Garden in Boylston. She is a graduate of both Albertus Magnus College in New Haven and Clark University in Worcester. She taught for more than 30 years, and retired as social-studies curriculum coordinator at Marlborough High School. Skip attended the College of the Holy Cross in Worcester, and is the retired owner of Francis Doyle Photography.



About 18 years ago, while teaching at Marlborough High, Pat, a non-Rotarian at the time, was approached by members of the Rotary Club of Marlborough to become the advisor for an Interact Club they were planning to start. They asked her to join the District RYLA program. Knowing Skip was a Rotarian, they were sure these were safe moves.

Pat continued in these positions until her retirement from teaching some six years later. Then, she joined Skip as a member of the Rotary Club of Northborough, and that same year was asked by the then-district governor to head the District's Eastern States Student Exchange (ESSEX) program.

Pat and Skip became a Rotary team at that time. On the club level, they have served as president (Skip, for three terms), foundation chair, youth chair, and bulletin editor. Both are multiple Paul Harris Fellows. On the district level, they have served as district trustees, assistant governors (Skip, for seven years and Pat, for four years). They continue as chairs of RYLA and ESSEX as well as being involved with the Bandy Hefler program and GSE.

Pat and Skip have been married for 51 years. They have a son, Ted Doyle (who lives with his wife, Rose Doyle, in Davenport, Florida) a son, Andrew Doyle (who lives in Shrewsbury), a daughter Gina Cranford (who lives and her husband, Scott Cranford, in Berlin), and two grandsons, Joshua and Will.

### **Wellesley Club Seeks Temporary Housing for Student from Albania**

The **Rotary Club of Wellesley** has received a request to house in the area a **foreign student from Albania**, who is waiting for her work visa to get approved. For now, she is living with a family in

Longmeadow and tutoring their children in mathematics. She would like to live closer to the Boston area and is looking to live *temporarily* with a family. She graduated with a math degree from Amherst College and has a master's in education from University of Pennsylvania. She is an international math Olympian and, as a very good instructor, is willing to tutor children in math and other subjects.

If you or know of someone who is interested, please contact **Tory DeFazio**, of the Wellesley club, for the student's resume, at [Tory@WindsorPressOnline.com](mailto:Tory@WindsorPressOnline.com).

### Correction

In the October newsletter, we misidentified Past District Governor and Worcester Rotarian **Ed Hall** (shown, left) in a photo of him posing with fellow Worcester Rotarians **Roger Frost** (shown, right) and **Val Callahan** (shown, center) during a recent luncheon meeting of the Rotary Club of Worcester.



Happy Thanksgiving to you and your entire family!

You may contact me at [Valentine.Callahan@gmail.com](mailto:Valentine.Callahan@gmail.com).

## Coming This January: New, Simple Rotary Invoice

**By John Hewko**



As you may have heard, clubs will receive a new, simple invoice from Rotary this January. The balance owed will reflect the membership data in Rotary's database on January 1, and clubs will no longer be able to adjust the balance after receiving the invoice. That's why it's crucial that your club officers report membership changes as they occur, so that they are billed correctly.

### Get Your Clubs Ready

Make sure all club officers have [Rotary.org accounts](https://www.rotary.org). If they don't, help them create accounts. This may involve reaching out to clubs that don't have their officers reported, helping them set up an e-mail account, and guiding them with registration for My Rotary. Let clubs know they can also contact their regional offices for support.

Show the club officers where and how to [update their member lists](#), pay club invoices, and add officers online.

- [How to add a member](#)
- [How to edit member information](#)
- [How to remove a member](#)
- [How to pay your invoice](#)
- [How to view your invoice](#)
- [How to add an officer](#)

If clubs report membership changes using a local database or software provider, have them make sure it is an [integrated vendor](#). In addition, verify their information is submitted to Rotary through the software provider.



Make sure each club has designated someone to update membership lists every 30 days or as changes occur. The club secretary is officially responsible for this. Send club officers links to their updated manuals, which include an [insert](#) about the club-invoice changes.

- [Club President's Manual](#)
- [Club Secretary's Manual](#)
- [Club Treasurer's Manual](#)

Direct club officers to [www.Rotary.org/clubinvoice](http://www.Rotary.org/clubinvoice) for more information.

Encourage club officers to save a tree and opt to receive [paperless](#) invoices.

## Offline Options

We recognize that not all Rotarians are able to report membership changes online. They can also complete the [Member Data Form](#), and do one of the following:

- E-mail it to [Data@Rotary.org](mailto:Data@Rotary.org)
- Fax it to 1-847-556-2207
- Mail it to their local Rotary office or fiscal agent

Rotary staff members worldwide are working hard to develop tools that make being a Rotarian easier. We hope you find this new process beneficial and efficient.

Thanks for your help in getting your district's clubs ready for the new club invoice.



*John Hewko, general secretary of Rotary International, may be reached at [www.Rotary.org/myrotary/en/contact](http://www.Rotary.org/myrotary/en/contact).*

## Give The Gift Of Rotary

[Click here](#) to give now, online.



**GIVE THE GIFT OF ROTARY AROUND THE WORLD**

**TAKE ACTION:**  
[www.rotary.org/givethegift](http://www.rotary.org/givethegift)

Every year, hundreds of thousands of people benefit from projects funded by The Rotary Foundation.

Although Rotary gives back in countless ways, we focus our service efforts in six areas: promoting peace, fighting disease, providing clean water, saving mothers and children, supporting education, and growing local communities.

A gift of any size allows us to create positive, lasting change.

\* Your gift will support projects like those shown here, though not directly purchasing the items listed.

☒ **I want to change lives through Rotary**

The gifts in this catalog show how even a small donation to Rotary can lead to life-changing projects in our six areas of focus. A monthly gift of any amount allows Rotary to do more for those in need.

Give online now at: [www.rotary.org/givethegift](http://www.rotary.org/givethegift)

**Gift amount:**  
☐ \$10 ☐ \$25 ☐ \$50 ☐ \$100 ☐ \$250 ☐ \$500 ☐ Make this a monthly gift ☐ Other \$ \_\_\_\_\_

**Please direct my gift to address one:**  
☐ Where the need is greatest (eligible for \$4,000)  
☐ Endicott Polio  
☐ Promoting peace  
☐ Fighting disease  
☐ Providing clean water  
☐ Saving mothers and children  
☐ Supporting education  
☐ Growing local economies

Member ID \_\_\_\_\_ Club name \_\_\_\_\_  
Name \_\_\_\_\_  
Address \_\_\_\_\_  
City \_\_\_\_\_ State \_\_\_\_\_ Zip \_\_\_\_\_  
☐ Visa ☐ MasterCard ☐ American Express ☐ Discover  
Card number \_\_\_\_\_  
Expiration date MM/YY \_\_\_\_\_ CV# \_\_\_\_\_  
Signature \_\_\_\_\_  
☐ Check enclosed, payable to The Rotary Foundation  
☐ Please contact me about creating a legacy with Rotary.  
Mail to: The Rotary Foundation, 14280 Collection Center Drive, Chicago, IL 60603-0182  
FORM 000003

**\$10 MOSQUITO BED NET**  
In countries like Uganda, where malaria is a major health concern, bed nets offer a safe, peaceful night's rest.

**\$25 SCHOOL UNIFORM**  
For students everywhere, succeeding in school starts with dressing the part. The gift of a school uniform can open the doors to education for one child.

**\$50 WATER FILTER**  
In rural Guatemala, deadly waterborne diseases are common. Personal water filters can create access to this basic need.

**\$85 BOX OF PURPLE MARKERS**  
After children receive the polio vaccine, their pinky fingers are marked. This is an effective way to show they have been immunized.

**\$100 FOLDING WALKER**  
Walkers and wheelchairs offer long-term health improvement, access to education, and improved economic security.

**\$100 SEWING MACHINE**  
Within Rotary microfinance training, sewing machines are used to show entrepreneurs how to turn sewing skills into a business.

**\$250 CERAMIC WASHBASIN**  
Ceramic washbasins give mothers living in domestic violence shelters the means to bathe and care for their babies and families.

**\$500 COW**  
Besides providing dairy products, cows produce calves that farmers in Cambodia can sell to support their families.

# Visioning Overview

**By Skip Doyle**



A club visioning session provides a vision for the future and the beginnings of a written plan that promotes consensus, consistency, and continuity. This statement of goals and initiatives provides a road map that's easy for leaders and club members to understand. It serves as a foundational piece for any club that wants to grow and become more effective.

Club visioning defines and celebrates the unique culture of each club through a four-hour facilitated delivery of eight sequenced exercises supporting the Rotary motto of "Service Above Self." Visioning allows the club members to dream about what their club could become. From this dream comes a new sense of identity and a renewed commitment to make a club better than it is today.

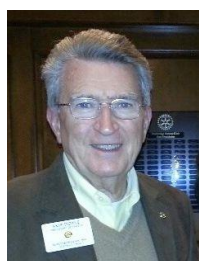
How does your club interpret "Service Above Self"? Without a conscious awareness of that unique interpretation, clubs have a tendency to lose focus. To a club that has not defined who they are, what they stand for and what they intend to do, anything and everything is an opportunity. All it takes is the strongest personality, the one who will give the most time, or the one who is the most influential for the club, to run the risk of following personal agendas, short-term gratifications and individual legacies. The premise here is that clubs are made up of many talented personalities, all of whom are supporting one cause: "Service Above Self." How can we get back to a team that is all pulling in the same direction - without waiting for crises management to occur, to get the team to start pulling?

The simple act of writing down long-term goals (strategic initiatives) in a group setting builds camaraderie and fosters agreement on a vision. The challenge to the visioning process is how to gather so many ideas (the dreams) and opportunities for the future from a group of 15 to 30 people, and condense them to the most important goals determined by that club (consensus), all within a very limited time frame. This is where an outside, neutral team of trained Rotary facilitators can make the difference. Self-facilitating any process brings limited success as all facilitators are too close to the process. A neutral team of Rotarians understands both the big picture of how Rotary works in the world today as well as how a facilitator should remain neutral. This skill set is the best service we can offer to the visioning process.

The opportunity to serve our clubs with vision facilitation and Rotary "clarity" through modest training within our club visioning process has created a "fellowship" of Rotarians delivering planning and club assistance within each district. Together, we focus on building strong clubs.

Click on each link, below, to download that document in Word format:

- [Request For Club Vision Facilitation Services](#)
- [Visioning Coordinator Guide](#)
- [Testimonial for Visioning by John Sbrogna, 2014-'15 President of the Rotary Club of Montachusett Area](#)
- [Testimonial for Visioning by Mary Heafy, 2014-'15 President of the Rotary Club of Fitchburg](#)



*Skip Doyle, immediate past president of the Rotary Club of Northborough, may be reached at [PDoyle2@Verizon.net](mailto:PDoyle2@Verizon.net).*

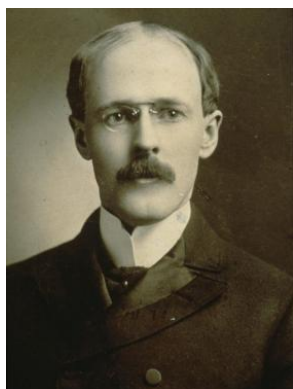
# Principles Rotarians Seek To Profess

By David Frazier

As Rotarians, it is taboo to solicit other club members for business or personal reasons. Meetings could easily turn into a free-for-all if solicitation were fostered. This doesn't mean that we can't do business with club members. Business among Rotarians is quite common. People do business with people they know and trust. A Rotarian can ask another for another Rotarian's product or service, but we can't ask for business. The lines on this can be confusing.

The following is an excerpt from the Rotary International website that covers some of the principles Rotarians seek to profess. The update for new members and tenured members alike can never be offered too frequently.

## Philosophy



The vision of Rotary founder **Paul Harris** (shown, right) was of a club that would kindle friendship among members of the Chicago business community. He wanted to find in the large city the sort of friendly spirit and helpfulness that he had known in the small towns where he had grown up - the spirit to reach out in service to others less fortunate. Through the subsequent spread of the Rotary movement, the spirit of friendship and service evolved quite naturally into a focus on helping to build goodwill and peace in the world.

It was also Harris's thought that the first club should represent a cross-section of the business and professional life of the community. From this idea, developed Rotary's Classification Principle Admission to Rotary club membership is by invitation, and accepting the invitation represents a personal commitment of the Rotarian to exemplify high ethical standards in one's own vocation or occupation.

The mission of Rotary International, the entity representing the global association of all Rotary clubs, is to assist Rotarians and Rotary clubs to accomplish the Object of Rotary. Rotary International emphasizes service activities by individuals and groups that enhance the quality of life and human dignity, encourage high ethical standards and create greater understanding among all people to advance the search for peace in the world.

## The Object of Rotary

The Object of Rotary can be considered the foundation stone on which the Rotary house is built. This brief statement, 106 words in its current form, is a key element of the Rotary International Constitution.

It states the essential purpose of the organization - "to encourage and foster the ideal of service as a basis of worthy enterprise" - and lists four areas by which this "ideal of service" can be fostered. They are: development of acquaintance as an opportunity for service; promotion of high ethical standards in business and professions; service in one's personal, business and community life; and advancement of international understanding, goodwill and peace.

## The Four-Way Test

One of the most widely printed and quoted statements of business ethics in the world is the Rotary Four-Way Test. It was created by Rotarian **Herbert J. Taylor** (shown, on next page) in 1932, when he was asked to take charge of a company that was facing bankruptcy.

Taylor looked for a way to save the struggling company, which was mired in depression-caused financial difficulties. He drew up a 24-word code of ethics for all employees to follow in their business and professional lives. The Four-Way Test became the guide for sales, production, advertising and all

relations with dealers and customers, and the survival of the company is credited to this simple philosophy.

Taylor became president of Rotary International in 1954-'55. The Four-Way Test, adopted by Rotary in 1943, has been translated into more than 100 languages and published in thousands of ways.

Here is the Four-Way Test.

Of the things we think, say or do:

1. Is it the truth?
2. Is it fair to all concerned?
3. Will it build goodwill and better friendships?  
Will it be beneficial to all concerned?



*David Frazier is the president of the Rotary Club of Worcester, may be reached at [DFrazier@WorcesterAdvisors.com](mailto:DFrazier@WorcesterAdvisors.com).*

## **D7910 Starts Local Rotarian Wine Appreciation Fellowship**

***By Carl Gomes and Steven Jones-D'Agostino***



District 7910 has started a local chapter of the Rotarian Wine Appreciation Fellowship. The purpose is provide D7910 Rotary members opportunities for fellowship and to learn about and enjoy the wonderful, diverse world of wine. Most of all, we intend on having many interesting, fun-filled local events.

### **Benefits:**

- Invitations to all District 7910 Rotarian Wine Appreciation Fellowship events
- Monthly RWAF newsletter

### **Cost:**

Here are the Membership choices and costs:

- Lifetime Membership includes spouse/significant other, 1 corkscrew, 1 Lifetime Member corkscrew pin: \$100
- Extra Lifetime Member corkscrew pin: \$10
- Annual Membership: \$25

### **Membership incentives:**

The first 10 Lifetime Members, only, will have their membership fee matched and a \$200 donation will be made in their names to [The Rotary Foundation](http://TheRotaryFoundation.org) for Rotary's [PolioPlus](http://PolioPlus.org) program.



## How to join:

- Complete the online Rotary Wine Membership application form at [www.RotaryWine.net](http://www.RotaryWine.net), and pay online with either PayPal or a credit card. (PayPal fees are included in the Rotary Wine Membership fee.)
- Mail your completed application form and payment by check to: 2405 Summit View Dr., Bedford, Texas 76021.

## Committees:

We will need a team of volunteers to help establish our D7910 chapter of the Rotarian Wine Appreciation Fellowship. Please select the committee(s), below, you would be willing to serve on, and e-mail your selection to **Carl Gomes** of the Rotary Club of Worcester at [CarlCGomes56@icloud.com](mailto:CarlCGomes56@icloud.com).

- Administrative
- Event Planning
- Fundraising
- Publicity

## For more information:

Visit [www.RotaryWine.net](http://www.RotaryWine.net), or contact:

**Carl Gomes**  
Rotary Club of Worcester  
[CarlCGomes56@icloud.com](mailto:CarlCGomes56@icloud.com)  
508-450-3374

**Steve Jones-D'Agostino**  
Rotary Club of Worcester  
[SRDagostino@icloud.com](mailto:SRDagostino@icloud.com)  
508-930-8675

# 2014-'15 Grant Status Report

*By Ralph Hammond*

# 2014-2015 Grant Status Report

## District Grants

FY 15 with D51 V01

Start Date: Ending 1 January 2015

Start Date: Ending 31 June 2015

FY 14 with D51

Date: 22-Nov-2014

Project Name	District	Club	Amount	Start Date	End Date	FY 14 with D51	FY 15 with D51	FY 16 with D51	FY 17 with D51	FY 18 with D51	FY 19 with D51	FY 20 with D51	FY 21 with D51	FY 22 with D51	FY 23 with D51	FY 24 with D51	FY 25 with D51	FY 26 with D51	FY 27 with D51	FY 28 with D51	FY 29 with D51	FY 30 with D51	FY 31 with D51	FY 32 with D51	FY 33 with D51	FY 34 with D51	FY 35 with D51	FY 36 with D51	FY 37 with D51	FY 38 with D51	FY 39 with D51	FY 40 with D51	FY 41 with D51	FY 42 with D51	FY 43 with D51	FY 44 with D51	FY 45 with D51	FY 46 with D51	FY 47 with D51	FY 48 with D51	FY 49 with D51	FY 50 with D51	FY 51 with D51	FY 52 with D51	FY 53 with D51	FY 54 with D51	FY 55 with D51	FY 56 with D51	FY 57 with D51	FY 58 with D51	FY 59 with D51	FY 60 with D51	FY 61 with D51	FY 62 with D51	FY 63 with D51	FY 64 with D51	FY 65 with D51	FY 66 with D51	FY 67 with D51	FY 68 with D51	FY 69 with D51	FY 70 with D51	FY 71 with D51	FY 72 with D51	FY 73 with D51	FY 74 with D51	FY 75 with D51	FY 76 with D51	FY 77 with D51	FY 78 with D51	FY 79 with D51	FY 80 with D51	FY 81 with D51	FY 82 with D51	FY 83 with D51	FY 84 with D51	FY 85 with D51	FY 86 with D51	FY 87 with D51	FY 88 with D51	FY 89 with D51	FY 90 with D51	FY 91 with D51	FY 92 with D51	FY 93 with D51	FY 94 with D51	FY 95 with D51	FY 96 with D51	FY 97 with D51	FY 98 with D51	FY 99 with D51	FY 100 with D51	FY 101 with D51	FY 102 with D51	FY 103 with D51	FY 104 with D51	FY 105 with D51	FY 106 with D51	FY 107 with D51	FY 108 with D51	FY 109 with D51	FY 110 with D51	FY 111 with D51	FY 112 with D51	FY 113 with D51	FY 114 with D51	FY 115 with D51	FY 116 with D51	FY 117 with D51	FY 118 with D51	FY 119 with D51	FY 120 with D51	FY 121 with D51	FY 122 with D51	FY 123 with D51	FY 124 with D51	FY 125 with D51	FY 126 with D51	FY 127 with D51	FY 128 with D51	FY 129 with D51	FY 130 with D51	FY 131 with D51	FY 132 with D51	FY 133 with D51	FY 134 with D51	FY 135 with D51	FY 136 with D51	FY 137 with D51	FY 138 with D51	FY 139 with D51	FY 140 with D51	FY 141 with D51	FY 142 with D51	FY 143 with D51	FY 144 with D51	FY 145 with D51	FY 146 with D51	FY 147 with D51	FY 148 with D51	FY 149 with D51	FY 150 with D51	FY 151 with D51	FY 152 with D51	FY 153 with D51	FY 154 with D51	FY 155 with D51	FY 156 with D51	FY 157 with D51	FY 158 with D51	FY 159 with D51	FY 160 with D51	FY 161 with D51	FY 162 with D51	FY 163 with D51	FY 164 with D51	FY 165 with D51	FY 166 with D51	FY 167 with D51	FY 168 with D51	FY 169 with D51	FY 170 with D51	FY 171 with D51	FY 172 with D51	FY 173 with D51	FY 174 with D51	FY 175 with D51	FY 176 with D51	FY 177 with D51	FY 178 with D51	FY 179 with D51	FY 180 with D51	FY 181 with D51	FY 182 with D51	FY 183 with D51	FY 184 with D51	FY 185 with D51	FY 186 with D51	FY 187 with D51	FY 188 with D51	FY 189 with D51	FY 190 with D51	FY 191 with D51	FY 192 with D51	FY 193 with D51	FY 194 with D51	FY 195 with D51	FY 196 with D51	FY 197 with D51	FY 198 with D51	FY 199 with D51	FY 200 with D51	FY 201 with D51	FY 202 with D51	FY 203 with D51	FY 204 with D51	FY 205 with D51	FY 206 with D51	FY 207 with D51	FY 208 with D51	FY 209 with D51	FY 210 with D51	FY 211 with D51	FY 212 with D51	FY 213 with D51	FY 214 with D51	FY 215 with D51	FY 216 with D51	FY 217 with D51	FY 218 with D51	FY 219 with D51	FY 220 with D51	FY 221 with D51	FY 222 with D51	FY 223 with D51	FY 224 with D51	FY 225 with D51	FY 226 with D51	FY 227 with D51	FY 228 with D51	FY 229 with D51	FY 230 with D51	FY 231 with D51	FY 232 with D51	FY 233 with D51	FY 234 with D51	FY 235 with D51	FY 236 with D51	FY 237 with D51	FY 238 with D51	FY 239 with D51	FY 240 with D51	FY 241 with D51	FY 242 with D51	FY 243 with D51	FY 244 with D51	FY 245 with D51	FY 246 with D51	FY 247 with D51	FY 248 with D51	FY 249 with D51	FY 250 with D51	FY 251 with D51	FY 252 with D51	FY 253 with D51	FY 254 with D51	FY 255 with D51	FY 256 with D51	FY 257 with D51	FY 258 with D51	FY 259 with D51	FY 260 with D51	FY 261 with D51	FY 262 with D51	FY 263 with D51	FY 264 with D51	FY 265 with D51	FY 266 with D51	FY 267 with D51	FY 268 with D51	FY 269 with D51	FY 270 with D51	FY 271 with D51	FY 272 with D51	FY 273 with D51	FY 274 with D51	FY 275 with D51	FY 276 with D51	FY 277 with D51	FY 278 with D51	FY 279 with D51	FY 280 with D51	FY 281 with D51	FY 282 with D51	FY 283 with D51	FY 284 with D51	FY 285 with D51	FY 286 with D51	FY 287 with D51	FY 288 with D51	FY 289 with D51	FY 290 with D51	FY 291 with D51	FY 292 with D51	FY 293 with D51	FY 294 with D51	FY 295 with D51	FY 296 with D51	FY 297 with D51	FY 298 with D51	FY 299 with D51	FY 300 with D51	FY 301 with D51	FY 302 with D51	FY 303 with D51	FY 304 with D51	FY 305 with D51	FY 306 with D51	FY 307 with D51	FY 308 with D51	FY 309 with D51	FY 310 with D51	FY 311 with D51	FY 312 with D51	FY 313 with D51	FY 314 with D51	FY 315 with D51	FY 316 with D51	FY 317 with D51	FY 318 with D51	FY 319 with D51	FY 320 with D51	FY 321 with D51	FY 322 with D51	FY 323 with D51	FY 324 with D51	FY 325 with D51	FY 326 with D51	FY 327 with D51	FY 328 with D51	FY 329 with D51	FY 330 with D51	FY 331 with D51	FY 332 with D51	FY 333 with D51	FY 334 with D51	FY 335 with D51	FY 336 with D51	FY 337 with D51	FY 338 with D51	FY 339 with D51	FY 340 with D51	FY 341 with D51	FY 342 with D51	FY 343 with D51	FY 344 with D51	FY 345 with D51	FY 346 with D51	FY 347 with D51	FY 348 with D51	FY 349 with D51	FY 350 with D51	FY 351 with D51	FY 352 with D51	FY 353 with D51	FY 354 with D51	FY 355 with D51	FY 356 with D51	FY 357 with D51	FY 358 with D51	FY 359 with D51	FY 360 with D51	FY 361 with D51	FY 362 with D51	FY 363 with D51	FY 364 with D51	FY 365 with D51	FY 366 with D51	FY 367 with D51	FY 368 with D51	FY 369 with D51	FY 370 with D51	FY 371 with D51	FY 372 with D51	FY 373 with D51	FY 374 with D51	FY 375 with D51	FY 376 with D51	FY 377 with D51	FY 378 with D51	FY 379 with D51	FY 380 with D51	FY 381 with D51	FY 382 with D51	FY 383 with D51	FY 384 with D51	FY 385 with D51	FY 386 with D51	FY 387 with D51	FY 388 with D51	FY 389 with D51	FY 390 with D51	FY 391 with D51	FY 392 with D51	FY 393 with D51	FY 394 with D51	FY 395 with D51	FY 396 with D51	FY 397 with D51	FY 398 with D51	FY 399 with D51	FY 400 with D51	FY 401 with D51	FY 402 with D51	FY 403 with D51	FY 404 with D51	FY 405 with D51	FY 406 with D51	FY 407 with D51	FY 408 with D51	FY 409 with D51	FY 410 with D51	FY 411 with D51	FY 412 with D51	FY 413 with D51	FY 414 with D51	FY 415 with D51	FY 416 with D51	FY 417 with D51	FY 418 with D51	FY 419 with D51	FY 420 with D51	FY 421 with D51	FY 422 with D51	FY 423 with D51	FY 424 with D51	FY 425 with D51	FY 426 with D51	FY 427 with D51	FY 428 with D51	FY 429 with D51	FY 430 with D51	FY 431 with D51	FY 432 with D51	FY 433 with D51	FY 434 with D51	FY 435 with D51	FY 436 with D51	FY 437 with D51	FY 438 with D51	FY 439 with D51	FY 440 with D51	FY 441 with D51	FY 442 with D51	FY 443 with D51	FY 444 with D51	FY 445 with D51	FY 446 with D51	FY 447 with D51	FY 448 with D51	FY 449 with D51	FY 450 with D51	FY 451 with D51	FY 452 with D51	FY 453 with D51	FY 454 with D51	FY 455 with D51	FY 456 with D51	FY 457 with D51	FY 458 with D51	FY 459 with D51	FY 460 with D51	FY 461 with D51	FY 462 with D51	FY 463 with D51	FY 464 with D51	FY 465 with D51	FY 466 with D51	FY 467 with D51	FY 468 with D51	FY 469 with D51	FY 470 with D51	FY 471 with D51	FY 472 with D51	FY 473 with D51	FY 474 with D51	FY 475 with D51	FY 476 with D51	FY 477 with D51	FY 478 with D51	FY 479 with D51	FY 480 with D51	FY 481 with D51	FY 482 with D51	FY 483 with D51	FY 484 with D51	FY 485 with D51	FY 486 with D51	FY 487 with D51	FY 488 with D51	FY 489 with D51	FY 490 with D51	FY 491 with D51	FY 492 with D51	FY 493 with D51	FY 494 with D51	FY 495 with D51	FY 496 with D51	FY 497 with D51	FY 498 with D51	FY 499 with D51	FY 500 with D51	FY 501 with D51	FY 502 with D51	FY 503 with D51	FY 504 with D51	FY 505 with D51	FY 506 with D51	FY 507 with D51	FY 508 with D51	FY 509 with D51	FY 510 with D51	FY 511 with D51	FY 512 with D51	FY 513 with D51	FY 514 with D51	FY 515 with D51	FY 516 with D51	FY 517 with D51	FY 518 with D51	FY 519 with D51	FY 520 with D51	FY 521 with D51	FY 522 with D51	FY 523 with D51	FY 524 with D51	FY 525 with D51	FY 526 with D51	FY 527 with D51	FY 528 with D51	FY 529 with D51	FY 530 with D51	FY 531 with D51	FY 532 with D51	FY 533 with D51	FY 534 with D51	FY 535 with D51	FY 536 with D51	FY 537 with D51	FY 538 with D51	FY 539 with D51	FY 540 with D51	FY 541 with D51	FY 542 with D51	FY 543 with D51	FY 544 with D51	FY 545 with D51	FY 546 with D51	FY 547 with D51	FY 548 with D51	FY 549 with D51	FY 550 with D51	FY 551 with D51	FY 552 with D51	FY 553 with D51	FY 554 with D51	FY 555 with D51	FY 556 with D51	FY 557 with D51	FY 558 with D51	FY 559 with D51	FY 560 with D51	FY 561 with D51	FY 562 with D51	FY 563 with D51	FY 564 with D51	FY 565 with D51	FY 566 with D51	FY 567 with D51	FY 568 with D51	FY 569 with D51	FY 570 with D51	FY 571 with D51	FY 572 with D51	FY 573 with D51	FY 574 with D51	FY 575 with D51	FY 576 with D51	FY 577 with D51	FY 578 with D51	FY 579 with D51	FY 580 with D51	FY 581 with D51	FY 582 with D51	FY 583 with D51	FY 584 with D51	FY 585 with D51	FY 586 with D51	FY 587 with D51	FY 588 with D51	FY 589 with D51	FY 590 with D51	FY 591 with D51	FY 592 with D51	FY 593 with D51	FY 594 with D51	FY 595 with D51	FY 596 with D51	FY 597 with D51	FY 598 with D51	FY 599 with D51	FY 600 with D51	FY 601 with D51	FY 602 with D51	FY 603 with D51	FY 604 with D51	FY 605 with D51	FY 606 with D51	FY 607 with D51	FY 608 with D51	FY 609 with D51	FY 610 with D51	FY 611 with D51	FY 612 with D51	FY 613 with D51	FY 614 with D51	FY 615 with D51	FY 616 with D51	FY 617 with D51	FY 618 with D51	FY 619 with D51	FY 620 with D51	FY 621 with D51	FY 622 with D51	FY 623 with D51	FY 624 with D51	FY 625 with D51	FY 626 with D51	FY 627 with D51	FY 628 with D51	FY 629 with D51	FY 630 with D51	FY 631 with D51	FY 632 with D51	FY 633 with D51	FY 634 with D51	FY 635 with D51	FY 636 with D51	FY 637 with D51	FY 638 with D51	FY 639 with D51	FY 640 with D51	FY 641 with D51	FY 642 with D51	FY 643 with D51	FY 644 with D51	FY 645 with D51	FY 646 with D51	FY 647 with D51	FY 648 with D51	FY 649 with D51	FY 650 with D51	FY 651 with D51	FY 652 with D51	FY 653 with D51	FY 654 with D51	FY 655 with D51	FY 656 with D51	FY 657 with D51	FY 658 with D51	FY 659 with D51	FY 660 with D51	FY 661 with D51	FY 662 with D51	FY 663 with D51	FY 664 with D51	FY 665 with D51	FY 666 with D51	FY 667 with D51	FY 668 with D51	FY 669 with D51	FY 670 with D51	FY 671 with D51	FY 672 with D51	FY 673 with D51	FY 674 with D51	FY 675 with D51	FY 676 with D51	FY 677 with D51	FY 678 with D51	FY 679 with D51	FY 680 with D51	FY 681 with D51	FY 682 with D51	FY 683 with D51	FY 684 with D51	FY 685 with D51	FY 686 with D51	FY 687 with D51	FY 688 with D51	FY 689 with D51	FY 690 with D51	FY 691 with D51	FY 692 with D51	FY 693 with D51	FY 694 with D51	FY 695 with D51	FY 696 with D51	FY 697 with D51	FY 698 with D51	FY 699 with D51	FY 700 with D51	FY 701 with D51	FY 702 with D51	FY 703 with D51	FY 704 with D51	FY 705 with D51	FY 706 with D51	FY 707 with D51	FY 708 with D51	FY 709 with D51	FY 710 with D51	FY 711 with D51	FY 712 with D51	FY 713 with D51	FY 714 with D51	FY 715 with D51	FY 716 with D51	FY 717 with D51	FY 718 with D51	FY 719 with D51	FY 720 with D51	FY 721 with D51	FY 722 with D51	FY 723 with D51	FY 724 with D51	FY 725 with D51	FY 726 with D51	FY 727 with D51	FY 728 with D51	FY 729 with D51	FY 730 with D51	FY 731 with D51	FY 732 with D51	FY 733 with D51	FY 734 with D51	FY 735 with D51	FY 736 with D51	FY 737 with D51	FY 738 with D51	FY 739 with D51	FY 740 with D51	FY 741 with D51	FY 742 with D51	FY 743 with D51	FY 744 with D51	FY 745 with D51	FY 746 with D51	FY 747 with D51	FY 748 with D51	FY 749 with D51	FY 750 with D51	FY 751 with D51	FY 752 with D51	FY 753 with D51	FY 754 with D51	FY 755 with D51	FY 756 with D51	FY 757 with D51	FY 758 with D51	FY 759 with D51	FY 760 with D51	FY 761 with D51	FY 762 with D51	FY 763 with D51	FY 764 with D51	FY 765 with D51	FY 766 with D51	FY 767 with D51	FY 768 with D51	FY 769 with D51	FY 770 with D51	FY 771 with D51	FY 772 with D51	FY 773 with D51	FY 774 with D51	FY 775 with D51	FY 776 with D51	FY 777 with D51	FY 778 with D51	FY 779 with D51	FY 780 with D51	FY 781 with D51	FY 782 with D51	FY 783 with D51	FY 784 with D51	FY 785 with D51	FY 786 with D51	FY 787 with D51	FY 788 with D51	FY 789 with D51	FY 790 with D51	FY 791 with D51	FY 792 with D51	FY 793 with D51	FY 794 with D51	FY 795 with D51	FY 796 with D51	FY 797 with D51	FY 798 with D51	FY 799 with D51	FY 800 with D51	FY 801 with D51	FY 802 with D51	FY 803 with D51	FY 804 with D51	FY 805 with D51	FY 806 with D51	FY 807 with D51	FY 808 with D51	FY 809 with D51	FY 810 with D51	FY 811 with D51	FY 812 with D51	FY 813 with D51	FY 814 with D51	FY 815 with D51	FY 816 with D51	FY 817 with D51	FY 818 with D51	FY 819 with D51	FY 820 with D51	FY 821 with D51	FY 822 with D51	FY 823 with D51	FY 824 with D51	FY 825 with D51	FY 826 with D51	FY 827 with D51	FY 828 with D51	FY 829 with D51	FY 830 with D51	FY 831 with D51	FY 832 with D51	FY 833 with D51	FY 834 with D51	FY 835 with D51	FY 836 with D51	FY 837 with D51	FY 838 with D51	FY 839 with D51	FY 840 with D51	FY 841 with D51	FY 842 with D51	FY 843 with D51	FY 844 with D51	FY 845 with D51	FY 846 with D51	FY 847 with D51	FY 848 with D51	FY 849 with D51	FY 850 with D51	FY 851 with D51	FY 852 with D51	FY 853 with D51	FY 854 with D51	FY 855 with D51	FY 856 with D51	FY 857 with D51	FY 858 with D51	FY 859 with D51	FY 860 with D51	FY 861 with D51	FY 862 with D51	FY 863 with D51	FY 864 with D51	FY 865 with D51	FY 866 with D51	FY 867 with D51	FY 868 with D51	FY 869 with D51	FY 870 with D51	FY 871 with D51	FY 872 with D51	FY 873 with D51	FY 874 with D51	FY 875 with D51	FY
--------------	----------	------	--------	------------	----------	----------------	----------------	----------------	----------------	----------------	----------------	----------------	----------------	----------------	----------------	----------------	----------------	----------------	----------------	----------------	----------------	----------------	----------------	----------------	----------------	----------------	----------------	----------------	----------------	----------------	----------------	----------------	----------------	----------------	----------------	----------------	----------------	----------------	----------------	----------------	----------------	----------------	----------------	----------------	----------------	----------------	----------------	----------------	----------------	----------------	----------------	----------------	----------------	----------------	----------------	----------------	----------------	----------------	----------------	----------------	----------------	----------------	----------------	----------------	----------------	----------------	----------------	----------------	----------------	----------------	----------------	----------------	----------------	----------------	----------------	----------------	----------------	----------------	----------------	----------------	----------------	----------------	----------------	----------------	----------------	----------------	----------------	----------------	----------------	----------------	----------------	-----------------	-----------------	-----------------	-----------------	-----------------	-----------------	-----------------	-----------------	-----------------	-----------------	-----------------	-----------------	-----------------	-----------------	-----------------	-----------------	-----------------	-----------------	-----------------	-----------------	-----------------	-----------------	-----------------	-----------------	-----------------	-----------------	-----------------	-----------------	-----------------	-----------------	-----------------	-----------------	-----------------	-----------------	-----------------	-----------------	-----------------	-----------------	-----------------	-----------------	-----------------	-----------------	-----------------	-----------------	-----------------	-----------------	-----------------	-----------------	-----------------	-----------------	-----------------	-----------------	-----------------	-----------------	-----------------	-----------------	-----------------	-----------------	-----------------	-----------------	-----------------	-----------------	-----------------	-----------------	-----------------	-----------------	-----------------	-----------------	-----------------	-----------------	-----------------	-----------------	-----------------	-----------------	-----------------	-----------------	-----------------	-----------------	-----------------	-----------------	-----------------	-----------------	-----------------	-----------------	-----------------	-----------------	-----------------	-----------------	-----------------	-----------------	-----------------	-----------------	-----------------	-----------------	-----------------	-----------------	-----------------	-----------------	-----------------	-----------------	-----------------	-----------------	-----------------	-----------------	-----------------	-----------------	-----------------	-----------------	-----------------	-----------------	-----------------	-----------------	-----------------	-----------------	-----------------	-----------------	-----------------	-----------------	-----------------	-----------------	-----------------	-----------------	-----------------	-----------------	-----------------	-----------------	-----------------	-----------------	-----------------	-----------------	-----------------	-----------------	-----------------	-----------------	-----------------	-----------------	-----------------	-----------------	-----------------	-----------------	-----------------	-----------------	-----------------	-----------------	-----------------	-----------------	-----------------	-----------------	-----------------	-----------------	-----------------	-----------------	-----------------	-----------------	-----------------	-----------------	-----------------	-----------------	-----------------	-----------------	-----------------	-----------------	-----------------	-----------------	-----------------	-----------------	-----------------	-----------------	-----------------	-----------------	-----------------	-----------------	-----------------	-----------------	-----------------	-----------------	-----------------	-----------------	-----------------	-----------------	-----------------	-----------------	-----------------	-----------------	-----------------	-----------------	-----------------	-----------------	-----------------	-----------------	-----------------	-----------------	-----------------	-----------------	-----------------	-----------------	-----------------	-----------------	-----------------	-----------------	-----------------	-----------------	-----------------	-----------------	-----------------	-----------------	-----------------	-----------------	-----------------	-----------------	-----------------	-----------------	-----------------	-----------------	-----------------	-----------------	-----------------	-----------------	-----------------	-----------------	-----------------	-----------------	-----------------	-----------------	-----------------	-----------------	-----------------	-----------------	-----------------	-----------------	-----------------	-----------------	-----------------	-----------------	-----------------	-----------------	-----------------	-----------------	-----------------	-----------------	-----------------	-----------------	-----------------	-----------------	-----------------	-----------------	-----------------	-----------------	-----------------	-----------------	-----------------	-----------------	-----------------	-----------------	-----------------	-----------------	-----------------	-----------------	-----------------	-----------------	-----------------	-----------------	-----------------	-----------------	-----------------	-----------------	-----------------	-----------------	-----------------	-----------------	-----------------	-----------------	-----------------	-----------------	-----------------	-----------------	-----------------	-----------------	-----------------	-----------------	-----------------	-----------------	-----------------	-----------------	-----------------	-----------------	-----------------	-----------------	-----------------	-----------------	-----------------	-----------------	-----------------	-----------------	-----------------	-----------------	-----------------	-----------------	-----------------	-----------------	-----------------	-----------------	-----------------	-----------------	-----------------	-----------------	-----------------	-----------------	-----------------	-----------------	-----------------	-----------------	-----------------	-----------------	-----------------	-----------------	-----------------	-----------------	-----------------	-----------------	-----------------	-----------------	-----------------	-----------------	-----------------	-----------------	-----------------	-----------------	-----------------	-----------------	-----------------	-----------------	-----------------	-----------------	-----------------	-----------------	-----------------	-----------------	-----------------	-----------------	-----------------	-----------------	-----------------	-----------------	-----------------	-----------------	-----------------	-----------------	-----------------	-----------------	-----------------	-----------------	-----------------	-----------------	-----------------	-----------------	-----------------	-----------------	-----------------	-----------------	-----------------	-----------------	-----------------	-----------------	-----------------	-----------------	-----------------	-----------------	-----------------	-----------------	-----------------	-----------------	-----------------	-----------------	-----------------	-----------------	-----------------	-----------------	-----------------	-----------------	-----------------	-----------------	-----------------	-----------------	-----------------	-----------------	-----------------	-----------------	-----------------	-----------------	-----------------	-----------------	-----------------	-----------------	-----------------	-----------------	-----------------	-----------------	-----------------	-----------------	-----------------	-----------------	-----------------	-----------------	-----------------	-----------------	-----------------	-----------------	-----------------	-----------------	-----------------	-----------------	-----------------	-----------------	-----------------	-----------------	-----------------	-----------------	-----------------	-----------------	-----------------	-----------------	-----------------	-----------------	-----------------	-----------------	-----------------	-----------------	-----------------	-----------------	-----------------	-----------------	-----------------	-----------------	-----------------	-----------------	-----------------	-----------------	-----------------	-----------------	-----------------	-----------------	-----------------	-----------------	-----------------	-----------------	-----------------	-----------------	-----------------	-----------------	-----------------	-----------------	-----------------	-----------------	-----------------	-----------------	-----------------	-----------------	-----------------	-----------------	-----------------	-----------------	-----------------	-----------------	-----------------	-----------------	-----------------	-----------------	-----------------	-----------------	-----------------	-----------------	-----------------	-----------------	-----------------	-----------------	-----------------	-----------------	-----------------	-----------------	-----------------	-----------------	-----------------	-----------------	-----------------	-----------------	-----------------	-----------------	-----------------	-----------------	-----------------	-----------------	-----------------	-----------------	-----------------	-----------------	-----------------	-----------------	-----------------	-----------------	-----------------	-----------------	-----------------	-----------------	-----------------	-----------------	-----------------	-----------------	-----------------	-----------------	-----------------	-----------------	-----------------	-----------------	-----------------	-----------------	-----------------	-----------------	-----------------	-----------------	-----------------	-----------------	-----------------	-----------------	-----------------	-----------------	-----------------	-----------------	-----------------	-----------------	-----------------	-----------------	-----------------	-----------------	-----------------	-----------------	-----------------	-----------------	-----------------	-----------------	-----------------	-----------------	-----------------	-----------------	-----------------	-----------------	-----------------	-----------------	-----------------	-----------------	-----------------	-----------------	-----------------	-----------------	-----------------	-----------------	-----------------	-----------------	-----------------	-----------------	-----------------	-----------------	-----------------	-----------------	-----------------	-----------------	-----------------	-----------------	-----------------	-----------------	-----------------	-----------------	-----------------	-----------------	-----------------	-----------------	-----------------	-----------------	-----------------	-----------------	-----------------	-----------------	-----------------	-----------------	-----------------	-----------------	-----------------	-----------------	-----------------	-----------------	-----------------	-----------------	-----------------	-----------------	-----------------	-----------------	-----------------	-----------------	-----------------	-----------------	-----------------	-----------------	-----------------	-----------------	-----------------	-----------------	-----------------	-----------------	-----------------	-----------------	-----------------	-----------------	-----------------	-----------------	-----------------	-----------------	-----------------	-----------------	-----------------	-----------------	-----------------	-----------------	-----------------	-----------------	-----------------	-----------------	-----------------	-----------------	-----------------	-----------------	-----------------	-----------------	-----------------	-----------------	-----------------	-----------------	-----------------	-----------------	-----------------	-----------------	-----------------	-----------------	-----------------	-----------------	-----------------	-----------------	-----------------	-----------------	-----------------	-----------------	-----------------	-----------------	-----------------	-----------------	-----------------	-----------------	-----------------	-----------------	-----------------	-----------------	-----------------	-----------------	-----------------	-----------------	-----------------	-----------------	-----------------	-----------------	-----------------	-----------------	-----------------	-----------------	-----------------	-----------------	-----------------	-----------------	-----------------	-----------------	-----------------	-----------------	-----------------	-----------------	-----------------	-----------------	-----------------	-----------------	-----------------	-----------------	-----------------	-----------------	-----------------	-----------------	-----------------	-----------------	-----------------	-----------------	-----------------	-----------------	-----------------	-----------------	-----------------	-----------------	-----------------	-----------------	-----------------	-----------------	-----------------	-----------------	-----------------	-----------------	-----------------	-----------------	-----------------	-----------------	-----------------	-----------------	-----------------	-----------------	-----------------	-----------------	-----------------	-----------------	-----------------	-----------------	-----------------	-----------------	-----------------	-----------------	-----------------	-----------------	-----------------	-----------------	-----------------	-----------------	-----------------	-----------------	-----------------	-----------------	-----------------	-----------------	-----------------	-----------------	-----------------	-----------------	-----------------	-----------------	-----------------	-----------------	-----------------	-----------------	-----------------	-----------------	-----------------	-----------------	-----------------	-----------------	-----------------	-----------------	-----------------	-----------------	-----------------	-----------------	-----------------	-----------------	-----------------	-----------------	-----------------	-----------------	-----------------	-----------------	-----------------	-----------------	-----------------	-----------------	-----------------	-----------------	----

Your contribution to the Annual Fund of The Rotary Foundation is part of what makes possible both the grant program and the ability to multiply your contribution to a project by either 2.0 or 3.5. Clubs need the help of other clubs. Since 1997, District 7910 has processed more than 600 projects, bringing in more than \$6 million to project sites in the U.S. and 58 other countries.

[Click here](#) or on image to download the full 2014-'15 Grant Status Report as of November 25, in PDF format.

Here is the status of District Grants, shown in alphabetical order by project name. Partner-clubs help is wanted. For every \$1.00 contributed, \$2.00 will go to the local project.

- **Project:** Acton Community Supper/Food Pantry, and Loaves and Fishes Food Pantry. **Clubs:** Acton-Boxborough, and Littleton. **Contact:** Joe Baden hoff, [JBaden hoff@hotmail.com](mailto:JBaden hoff@hotmail.com).
- **Project:** Develop support for local food pantries in our district. **Clubs:** Acton-Boxborough, Bedford, Fitchburg, Littleton, Sturbridge, and Wachusett. Other clubs are welcomed. Projects like this make us all proud. **Contact:** Corinne Braciska, [CCBraciska@gmail.com](mailto:CCBraciska@gmail.com).
- **Project:** Lowell Addiction Recovery Program. **Club:** Tyngsboro-Dunstable. **Contact:** Bill Garr, [BGarr@LowellHouseInc.org](mailto:BGarr@LowellHouseInc.org).
- **Project:** RFK Ropes Challenge Course. **Club:** Nashoba Valley. **Contact:** Richard Simon, [RLSimon@comcast.net](mailto:RLSimon@comcast.net).

Here is the status of Global Grants, shown in alphabetical order by project name. Partner-clubs help is wanted. For every \$1.00 contributed, \$3.50 will go to the project site.

- **Project:** Middle-school peer-leadership and wellness project in Puerto Rico. **Club:** Wellesley. **Contact:** Bob Anthony, [BobAnthony@AdolescentWellness.org](mailto:BobAnthony@AdolescentWellness.org). **Goal:** \$10,000. **Needed:** \$3,500.
- **Project:** Mobile blood-collection facility for a hospital in Pune, India. **Clubs:** Wachusett, with Fitchburg, Framingham, Shrewsbury, and Uxbridge. **Contact:** Sandy Mahoney, [SandraBMahoney@gmail.com](mailto:SandraBMahoney@gmail.com). **Goal:** \$5,800. **Needed:** \$0.
- **Project:** School and community well in Leogane, Haiti. **Club:** Worcester. **Contact:** Carl Gomes, [CarlCGomes56@icloud.com](mailto:CarlCGomes56@icloud.com). **Goal:** \$10,000. **Needed:** \$10,000.
- **Project:** Schools for girls in Afghanistan. **Club:** Fitchburg. **Contact:** Karen Fusco, [Karen.Fusco@verizon.net](mailto:Karen.Fusco@verizon.net). **Goal:** \$10,000. **Needed:** \$10,000.
- **Project:** WPI Chapter of Engineers Without Borders USA's water-harvesting project in Guatemala. **Clubs:** Nashoba Valley, with WPI Rotaract, Acton-Boxboro, Bedford, Littleton, and Shrewsbury. **Contact:** Richard Simon, [RLSimon@comcast.net](mailto:RLSimon@comcast.net). **Goal:** \$10,000. **Needed:** \$4,000.

The more partnering, the better. Please keep us all posted as we watch the partnerships grow.



*Ralph Hammond, chair of the District Grant Subcommittee and executive secretary of the Rotary Club of Bedford, may be reached at [Ralph.Hammond@verizon.net](mailto:Ralph.Hammond@verizon.net) or 781-275-2373.*

## D7910 Delegation Attends Rotary Day At The UN

*By Ed Babinsky and Laura Spear, with photos by Richard Simon*



[Click here](#) or on image, to view photos of the D7910 delegation on Rotary Day at the UN. Shown, left to right, are: **Karen Fusco, Satya Mitra, Richard Simon, Indira Desai, Bob Johnson, Rich Garcia, Jackie Wilson** (Natascha Finnerty's sister), **Carol Toomey, Fatima Serra, Natascha Finnerty, Jim Stone, Chris Spear, Mary Garcia, Laura Spear, Teresa Iapalucci, Rich Dietz, and Jim Fusco.**

More than 20 Rotarians and a sizable number of Interact students from District 7910 attended Rotary Day on November 1 at the United Nations. They had the chance to meet folks from all over America and the world who are working to better our world.

The meeting rooms were amazingly comfortable, and the break-out sessions were very informative. It was heartening to hear that work continues in Haiti in order to help small businesses grow and rebuild the Haitian economy. But it was also daunting to hear that 65 million people are in slavery around the world (more than at any other time, including the days of the Slave Trade in the 1800s). And, that by 2050, one out of two people will be without fresh water.

What was truly wonderful was the camaraderie of folks working on major problems around the world.

*Ed Babinsky is a member of the Rotary Club of*

## Save The Date: New Generation Meeting On December 12

**SAVE THE DATE**  
**New Generation Meeting**  
Friday, December 12, 2014 at 6:30pm  
Dinner and Hospitality Suites  
Saturday, December 13, 2014 9am to 4pm  
at The Boxborough Holiday Inn, Exit 28, Rte 495, Boxborough, MA  
Cost is \$35 which includes a box lunch.  
Special Hotel Rate Friday night: \$99 per room

*Ideas for Agenda are welcome.  
Please email [carolrotary@gmail.com](mailto:carolrotary@gmail.com)  
with any suggestions or ideas.*

*Celebrate the "Future of Rotary" as we share best practices, past successes, and creative ideas for the future.*

Breakout sessions and facilitated sessions for:

**All Rotarians interested are invited.**

For more information, contact Carol Toomey at:  
[carolrotary@gmail.com](mailto:carolrotary@gmail.com)

*If you are interested in the planning of this meeting contact Carol*

[Click here](#) or on image to view and/or download the full-sized version of the flyer (shown, left), in PDF format.

[Click here](#) to view and/or download the agenda, in Word format.

[Click here](#) to register.

For more information, contact **Carol Toomey** at [CarolRotary@gmail.com](mailto:CarolRotary@gmail.com).

## Rotary Framingham Holding 'Click & Bid 2014 Online Auction'

The **online bidding**, which opened on November 18, will end on December 11 at 10 p.m. Bid online [www.BiddingForGood.com/framinghamrotary](http://www.BiddingForGood.com/framinghamrotary) for hundreds of items, including sporting-event tickets, jewelry, restaurant and retail store gift cards, home goods, and much, much more!

**Watch live** on Access Framingham TV (Verizon, Channel 4; Comcast, Channel 9; and RCN, Channel 3) on Dec. 10 and 11 at 7:30 p.m.

All proceeds will go to benefit the Rotary Club of Framingham's community-service efforts. For **more information**, visit [www.FraminghamRotary.org](http://www.FraminghamRotary.org).

[Click here](#) or on image to **view and/or download** the flyer (shown, right), in PDF format.

**FRAMINGHAM ROTARY**

**Click & Bid**  
**2014 Online AUCTION**

@ [www.biddingforgood.com/framinghamrotary](http://www.biddingforgood.com/framinghamrotary)

**OPEN for BIDDING**  
Nov. 18th @ 8 am

**Bidding ENDS**  
Dec. 11th at 10 pm

**Watch us LIVE on**  
**ACCESS FRAMINGHAM:**  
Verizon CH. 43, Comcast  
CH. 9, OR RCN CH. 3  
Dec. 10th & 11th at 7:30 pm  
Preview nite Nov. 17th

**BID ONLINE** for 100's  
of items including  
sporting event tickets,  
jewelry, restaurant &  
retail store gift cards,  
home goods, & much,  
much more!

All proceeds benefit Framingham Rotary's community service efforts. For more info, [www.framinghamrotary.org](http://www.framinghamrotary.org) or visit us on Facebook @ Framingham Rotary.



## D7910 Clubs Celebrate Our Vets

### Rotary Groton-Pepperell Visits Veteran's Home at Devens on Veterans Day

Shown, left to right, are: an unidentified Veterans Home caretaker; **Derek Ten Broeck**; **Neptali Rondina**; **Bob France**; **Cindy Thomas**; an unidentified veteran from the home; and, in the tuxedo, **James Reedy**.

Mr. Reedy represented the 14<sup>th</sup> Masonic District of Massachusetts, from which he dropped off donated items



### Rotary Nashoba Valley Helps Serve Veterans Day Breakfast



The Rotary Club of Nashoba Valley and the Stow Council on Aging co-sponsored a hearty breakfast for about 140 people, including more than 100 veterans, on Veterans Day. [Click here](#) or on image for photos of the event.

The keynote speaker, **Mrs. Reidy**, is a 103-year-old veteran who spoke about her career in the WAACs from 1942 through 1946. She also remembers the original Armistice Day: November 11, 1918! She's shown posing with District Governor **Val Callahan**.

### Rotary Acton-Boxborough Holds Veterans Day Reception

The Rotary Club of Acton-Boxborough and National Honor Society students from Acton-Boxborough Regional High School ABRHS served breakfast for 300 veterans in Acton and Boxborough. [Click here](#) or on image for photos of the event.





# Rotary Wellesley Expands Wellness Project To Puerto Rico

*By Robert Anthony*



*Shown, left to right, are these Rotary Interact mentors: **David Michael**; **Nathan Chiu**, president; **Teddy Sevilla**, vice president; **Harman Bharj**, director; **Joey Kinyanjui**, director; **Thomas Capozzi**, director; and **Nicole Frontero**, secretary.*

Thank you so much to District Governor **Val Callahan** for authorizing the application to expand the Rotary Club of Wellesley's Wellness Project beyond Wellesley, and with Rotarians in Puerto Rico. Even before The Rotary Foundation decides whether to accept our application, which we submitted on October 23, the Rotary Club of Wellesley has learned a great deal from working with the Rotarians in Puerto Rico.

One example is how they helped make this application vibrant and practical by wholly engaging four school communities in the planning. A simpler example is that they demonstrated the importance of sponsoring an Interact group.

As a result of sponsoring our first Interact club, we are enjoying the following: a cascade of new relationships; the meeting space offered by Wellesley High School; teens from neighboring Interact and Rotary clubs asking to participate in our project; and, our long-standing Rotaract group at Babson College reaching out to help the Interact teens succeed

The two neighboring Rotary clubs seeking to take part are Wayland and Weston as well as the Interact club they support. A Rotary member engaged with Scouting has suggested scheduling the local Interact mentors to present at their pack meeting. Another member has suggested their international Interact project be used to help the Wellness Project Interact teens in Puerto Rico succeed. To date, officers from those two local Interact clubs have met to discuss the idea!

This will be great fun going forward!



*Robert Anthony, who chairs Rotary Wellesley's Community Services Committee, may be reached at [BobAnthony@AdolescentWellness.org](mailto:BobAnthony@AdolescentWellness.org).*

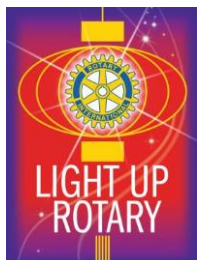
## Speakers Who Have Presented At D7910 Rotary Clubs



- **Speaker:** Dan Shaughnessy
- **Subject:** Being a Sportswriter for *The Boston Globe*
- **Rotary Club Presentations:** Newton, November 2
- **Contact:** [AEI Speakers Bureau](#), 800-447-7325

[Click here](#) for the **D7910 Speakers Bureau**, for more speakers who have presented at Rotary Clubs in our district.

## Save The Dates



- **Dec. 7:** [D7910 Holiday Party](#), 11 a.m. to 3 p.m., Tower Hill Botanic Garden, Boylston
- **Dec. 12 & 13:** [RYLA New Generations Meeting](#), Holiday Inn, Boxborough
- **Jan. 14:** Social Media Seminar, Doubletree Hotel, Leominster (for more information, contact **Laura Spear** at [Laura@Spear.net](mailto:Laura@Spear.net))
- **Jan. 22:** [Rotary Forum – The Power of Change: Improving the Lives of Women](#), 7 to 8 p.m., Fenn School, Concord

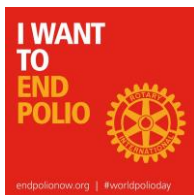
## For More Information



Questions? Have something you want to share? Contact Governor **Val Callahan** at [Valentine.Callahan@gmail.com](mailto:Valentine.Callahan@gmail.com). To learn more about **District 7910**, visit our [website](#), and join us online at [Facebook](#), [Google+](#), [LinkedIn](#) and [Twitter](#). To learn more about **Rotary International**, [click here](#).



Visit District 7910's brand new [YouTube page](#).



Learn how Rotary International got 119,350 supporters from 173 countries to join in the fight to [End Polio Now](#) by making the world's largest commercial.



[Click here](#) for past issues of *District 7910 Newsletter*.