

**From:** South Pacific Philippines Office  
**Date sent:** 07/27/2017 12:07:08 am  
**Subject:** Regional Office Communication

[Print This](#)

Having trouble viewing this email? [View online](#)



South Pacific & Philippines Office

## RI-Resource Extra

Rotary International South Pacific & Philippines Office



**ROTARY:  
MAKING A  
DIFFERENCE**

Welcome to the new Rotary year. We trust your first month has been enjoyable and the club is vibrant and looking forward to the year ahead.

In May, club Presidents were given the opportunity to participate in a survey providing feedback on their awareness of the services and support we offer from the office here in Australia. We learnt a great deal and would like to thank those who took part. The feedback has been invaluable and will definitely help us in our ability to serve you better.

As part of the review, we are seeking feedback into the validity and need of providing a monthly newsletter to club Presidents. If you have any suggestions or comments on this plan, please share them with us at [risppo@rotary.org](mailto:risppo@rotary.org)

### Resources

[Australia, NZ and Pacific Island Club Invoice FAQs](#)

[Philippine Clubs Payment Guidelines](#)

### Your Regional Office

This office is comprised of 12 full time staff, working to support clubs and districts in every facet of operation. Please feel free to contact us for support with

- Finance and club dues
- Foundation giving and PHF processing
- Membership support
- Club logos and licencing
- Satellite/Interact/Rotaract chartering
- Grievance issues
- Publications
- Anything else you feel you need support with.

Finance Supervisor  
Grace Ramirez

[grace.ramirez@rotary.org](mailto:grace.ramirez@rotary.org)

The Rotary Foundation  
Supervisor

Bruce Allen

[bruce.allen@rotary.org](mailto:bruce.allen@rotary.org)

Club & District Support  
Supervisor

Andrew Best

[andrew.best@rotary.org](mailto:andrew.best@rotary.org)

Office reception

[risppo@rotary.org](mailto:risppo@rotary.org)

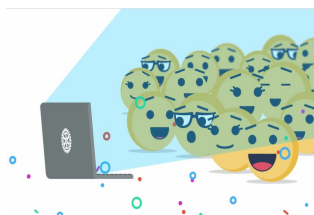
Tel +61 2 8894 9800



Our very own RI President Ian Riseley and partner Juliet, have asked all clubs to assist their goal of planting one tree for every Rotarian - 1.2 million before Earth Day on April 22, 2018. See the brochure [here](#) for further details. Can this be your club's way to show the world you're Making a Difference??

### The Improved Rotary Club Central

With the new Rotary year comes the all new Rotary Club Central. The refreshed RCC is the perfect way to set club goals, motivate members and record achievements. President Ian has asked all clubs to record their service hours and contributions to allow RI to have a stronger understanding of how much we are making a difference at club, district and global level. Watch the video [here](#) and [login](#) today.



Club Invoice for July 2017

PO Box 1415 Parramatta  
2124

An electronic copy of the invoice has now been emailed to the incumbent club officers. To convert the USD amounts to local currency, please refer to the exchange rate table below. These rates are for August only. Succeeding months' exchange rates will be published when they become available.

August RI Exchange  
Rate  
Local Currency to  
USD1.00

AUD	1.26
NZD	1.34
PHP	51.00

If you require further assistance, please contact the following finance representatives:

Australia, NZ and Pacific Island clubs - Sally Furto at [Sally.Furto@rotary.org](mailto:Sally.Furto@rotary.org) (+61288949832)

Philippine Clubs - Rosalyn Ong at [Rosalyn.Ong@rotary.org](mailto:Rosalyn.Ong@rotary.org) (+61288949831 or +61478939555)

November 8th Movie Night for Polio

### NEWS FLASH !!!!!!!

November is Polio month and we have secured the opening night screening of the remake of [Murder on the Orient Express](#) as an opportunity for clubs to raise funds. This night can be recognised as an event for World Polio Day, (October 24th) that can be registered [here](#). Please stay tuned for more information closer to November.

