

Areas of Focus Vision Statements and Goals

Areas of Focus Update

The Trustees of The Rotary Foundation (TRF) have identified six areas of focus for the new grant structure. These areas reflect critical humanitarian issues and needs that Rotarians are addressing worldwide. They will align Rotary with other international development efforts and strategically further the Foundation's mission.

Statements of purpose and goals

Each area of focus begins with a statement of purpose, followed by a list of specific goals. The Foundation will use the goals to establish

- Projects and activities for packaged global grants
- Possible strategic partners for packaged global grants
- Evaluation criteria for club- and district-developed global grants
- A system for measuring outcome for all global grants

1. Peace and conflict prevention/resolution

The Rotary Foundation promotes the practice of peace and conflict prevention/resolution by

- Strengthening local peace efforts
- Training local leaders to prevent and mediate conflict
- Supporting long-term peace building in areas affected by conflict
- Assisting vulnerable populations affected by conflict, particularly children and youth
- Supporting studies related to peace and conflict resolution

2. Disease prevention and treatment

The Rotary Foundation reduces the causes and effects of disease by

- Improving the capacity of local health care professionals
- Combating the spread of HIV/AIDS, malaria, and other major diseases
- Enhancing the health infrastructure of local communities
- Educating and mobilizing communities to help prevent the spread of major diseases
- Supporting studies related to disease prevention and treatment

3. Water and sanitation

The Rotary Foundation ensures that people have sustainable access to water and sanitation by

- Increasing equitable community access to safe drinking water and basic sanitation
- Strengthening the ability of communities to develop and maintain sustainable water and sanitation systems
- Educating communities about safe water, sanitation, and hygiene
- Supporting studies related to water and sanitation

4. Maternal and child health

The Rotary Foundation improves the lives of mothers and their children by

- Reducing the mortality rate for children under the age of five
- Reducing the maternal mortality rate
- Improving access to essential medical services and trained health care providers for mothers and their children
- Supporting studies related to maternal and child health

5. Basic education and literacy

The Rotary Foundation promotes education and literacy for all by

- Ensuring that children have access to quality basic education
- Reducing gender disparity in education
- Increasing adult literacy
- Strengthening the capacity of communities to support basic education and literacy
- Supporting studies related to basic education and literacy

6. Economic and community development

The Rotary Foundation invests in people to create measurable and enduring economic improvement in their lives and communities by

- Strengthening the development of local entrepreneurs and community leaders, particularly women, in impoverished communities
- Developing opportunities for decent and productive work, particularly for youth
- Building the capacity of local organizations and community networks to support economic development
- Supporting studies related to economic and community development

Global Grants Information Sheet

Global grants, both club- and district-developed and packaged, must support activities and the goals of one or more of the six areas of focus:

- Peace and conflict prevention/resolution
- Disease prevention and treatment
- Water and sanitation
- Maternal and child health
- Basic education and literacy
- Economic and community development

For club- and district-proposed projects, global grants offer a minimum World Fund award of US\$15,000 for a minimum project budget of \$30,000. The World Fund award is based on a 100 percent match of District Designated Fund (DDF) allocations or a 50 percent match of cash contributions. Global grants must be sponsored by two clubs/districts: a host partner in the country where the activity takes place and an international partner outside the country. Both the host and international partner must be members of the Future Vision pilot.

Before submitting a global grant application, Rotarian sponsors will be required to submit a proposal to The Rotary Foundation describing their anticipated activities and outcomes.

Global grants may support a variety of activities but must adhere to the eligibility requirements set forth in The Rotary Foundation Grant Terms and Conditions. Global grants will not be approved to reimburse clubs or districts for projects already completed or in progress.

Humanitarian Projects

Global grants may support humanitarian projects providing sustainable, measurable outcomes in the benefiting community. A project is sustainable if it ensures successful project outcomes that can be maintained on a long-term basis to serve the ongoing needs of a community once the grant funds have been expended. A project is measurable if the grant outcome lends itself to data collection and analysis in order to demonstrate quantifiable results and impact within a community. Sponsors should conduct a community needs assessment at the beginning of the planning stage to identify the benefiting communities assets and their most pressing needs and develop a project that addresses those needs.

Scholars

Global grants may support scholars seeking a scholarship for graduate-level study whose area of study and professional goals further one of the six areas of focus. Global grants may fund a scholar for a term of one year to four years, covering tuition, room and board, etc., for the duration of the grant. At the time of application, the scholar must provide a letter of acceptance to his/her chosen university located in an international pilot district and the host partner must also be identified.

Vocational Training

Global grants may be used to fund local vocational trainings in an effort to support the capacity building of a benefiting community. This type of training may be most beneficial in conjunction with a humanitarian project to help ensure its sustainability. Global grants may also support vocational training teams, groups of professionals traveling abroad to either learn about their profession or teach local professionals about a particular field. A vocational training team may be multivocational but must share a common purpose in support of an area of focus. Each team must consist of a minimum of one Rotarian team leader and three non-Rotarian team members with no maximum limit of participants. There are no age restrictions on participants or time restrictions on length of stays abroad.

For packaged global grants, there will be a limited number available at the start of the pilot.

The Rotary Foundation's Principles of Sustainability for Global Grants

The Rotary Foundation strongly encourages Rotarians to apply the following principles of sustainability to all projects and activities:

1. Global grants incorporate activities and safeguards that ensure the continuity of project impact after TRF funding is fully expended.
2. Global grants work toward multiple levels of sustainability: economic, cultural, social, and resource.
3. Global grants make optimal use of local resources, regional input and indigenous knowledge as much as possible.
4. Global grants respect the natural resource base and avoid deterioration or destruction of the local environment.
5. Global grants attempt to reach the greatest number of beneficiaries as appropriate.
6. Global grants prepare scholars and individuals to contribute to new and innovative methods in professional fields reflected within a Foundation area of focus.
7. Global grants prepare participants to increase impact and improve effectiveness in the communities and vocations in which they work.
8. Global grants utilize the input and skills of grassroots individuals and groups, such as Rotary Community Corps, to ensure continuation of projects and activities.

Developing Eligible Projects and Activities within the Areas of Focus

Rotary Foundation Global Grants will fund activities that meet the goals of one or more of the areas of focus. The goals offer numerous opportunities for a wide variety of projects and activities. The Rotary Foundation will not require Rotarians to adhere to a specific list of eligibility dos and don'ts, but will instead rely on the ingenuity and creativity of Rotarians in developing appropriate responses to the goals of each area.

The following general guidelines can assist Rotarians in proposing projects and activities that the Foundation will consider eligible for global grant support:

- Choose an area(s) of focus and the specific goal(s) that your project or activity will target.
- Determine how your project or activity will have sustainable impact in the chosen area(s) of focus. Refer to TRF Principles of Sustainability.
- Ensure that all proposed projects and activities adhere to the grant terms and conditions.
- Find a cooperating partner if appropriate and helpful to meeting the goals of the chosen project or activity.
- For humanitarian projects and vocational training teams, ensure there is community support for your project via a strong community assessment process at the beginning of the planning process.
- For scholarships, ensure that candidates are aware of the areas of focus and are clear on how they will pursue their studies and future professional endeavors with the areas and goals in mind.
- For a vocational training team, ensure that team members are aware of the areas of focus and are clear on how they will apply their professional development experience with the areas and goals in mind.
- Communicate with staff about eligibility-related questions at any point in the process. Staff will help clubs and districts to develop projects and activities that meet the goals of the areas of focus and have sustainable impact in the communities where they will be implemented.

The Rotary Foundation will provide more resources and tools for project and activity development to pilot clubs and districts in the coming months. We encourage you to refer to the pilot terms and conditions for more information about project and activity criteria.

In the meantime, if there are any initial questions about the areas of focus, the goals, or eligibility, please contact pilot staff.

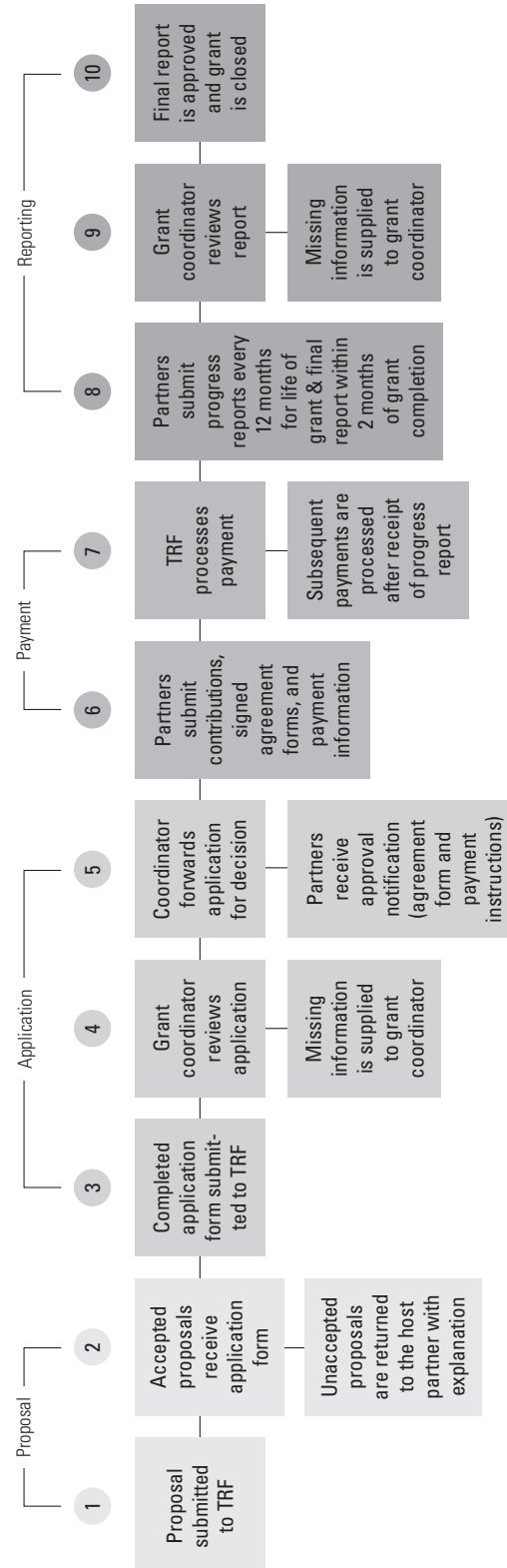
Unsustainable Project	Revision to Make a Sustainable Project	Area of Focus
Feeding program for a school or orphanage (for example, providing a daily glass of milk or hot meal)	Instead of donating food, partner with a cooperating organization to provide cows, goats, chickens, etc. Include a training component that teaches beneficiaries animal husbandry skills as well as how to produce other dairy products. The children still receive the nutrition, and enough animals are provided so that excess dairy products can be sold to bring income to the institution. Providing both male and female animals could make the project sustainable for generations.	Economic and community development
Surgical missions/ one-time purchase of medical equipment	Rather than solely providing funds for individual medical care for a specific number of people or a single delivery of one piece of diagnostic equipment, send a vocational training team to provide training for local medical staff on how to diagnose tuberculosis more accurately and provide more effective follow-up treatment. By upgrading equipment and training local professionals, hospitals and medical facilities will increase their capacity to provide sustainable care to communities facing the effects of TB.	Disease prevention and treatment
Digging a water well / providing slow-sand water filters	In addition to developing a clean water source, a grant should provide training on maintenance, repair, water conservation, and hygiene. Develop a community board and a fund that beneficiaries will regularly support through a nominal fee. The board will oversee the fund and use the money for maintenance and repair of the wells.	Water and sanitation
Building toilet blocks	In addition to toilet blocks, provide training on cleaning, maintenance, repair, and hygiene.	Water and sanitation
Distributing insecticide-treated mosquito nets	Pair the distribution of nets with training on effective use and care of the nets. Provide training on malaria awareness and prevention, and potentially include general health and hygiene training as well.	Disease prevention and treatment
Providing a container of books to a school	In addition to books, send a vocational training team or hire local educators to train additional teachers and expand skills of the current staff. Conduct a needs assessment to determine whether more female teachers are needed to expand access to education for girls. Also consider how to enhance services offered by the school, perhaps by expanding a food program, or providing additional health services/ clinic at school, after-school activities (equipment, facilities), or adult-education programs.	Basic education and literacy

Unsustainable Project	Revision to Make a Sustainable Project	Area of Focus
Furnishing a vocational training center with sewing machines	<p>Include a vocational training team to train the center's teachers and trainers on new techniques and opportunities for their students. Teach the students at the center business practices and how to develop a business plan to succeed in their new vocation.</p> <p>When providing equipment, consider the accessories. For example, in addition to sewing machines, provide other necessary materials (fabric, thread, needles, scissors, etc.) so the beneficiaries can make clothing and other items.</p>	Economic and community development
Providing antituberculosis or deworming medication	<p>Two clubs could partner to provide a health clinic with equipment, supplies, and training on the latest procedures and medical techniques. Supplying antituberculosis medication could be part of this larger project.</p> <p>Provide deworming medication to schoolchildren in addition to new shoes for the patients and family lessons in basic health and hygiene to help prevent reinfestation.</p>	Disease prevention and treatment

Global Grants Business Cycle


Future Vision Plan Global Grants Business Cycle

Only qualified clubs and districts can submit proposals.



Rotary Foundation Grants Member Access Application

All Rotary Foundation grant applications for pilot districts will be submitted and processed using Member Access. When pilot district governors and district Rotary Foundation committee chairs log into Member Access, they will see a Future Vision Pilot Site tab on the left side of the screen. Click Future Vision Pilot Site to get to the main page. On this page you will be able to submit grant proposals, submit grant applications, check the status of the district's grants, and submit reports.



The image shows a screenshot of the Rotary International Member Access website. The top navigation bar includes the Rotary International logo and links for "My Profile", "Change Password", and "Logout". The left sidebar contains a "Rotary Business Online" section with various links such as "View Membership Data", "Contribute to The Rotary Foundation", "View your Contribution History", "Search Club and District Data", "Manage E-mail Subscriptions", "Fund Development Club Goal Report Form", "View Club Recognition Summaries (CRS)", "View MCR, SHARE & Polio Reports", "View Incoming Officers", "Review Club Data", "View EREY Eligibility Report", "Review Membership Trends", "Register for Meetings", "Humanitarian Grants District Support Forum", "Group Study Exchange Resource Forum", "Future Vision Pilot Districts", "2010-11 District Governor's Forum", and "Future Vision Pilot Site". A large arrow points from the "Future Vision Pilot Site" link in the sidebar to the main content area.

The main content area displays a greeting: "Hello It is 8:11:29 AM USA Central Standard Time on 16-Oct-2009." Below this, there are three bullet points: "Complete the online qualification process so that your district is eligible to receive grants", "Apply online for global and district grant funds", and "Track the status of grant applications and grant activities". A large arrow points from these bullet points to the "Future Vision Pilot Site" page.

The "Future Vision Pilot Site" page has a header with the Rotary International logo and the text "THE ROTARY FOUNDATION". The main content area includes a "Welcome to The Rotary Foundation Future Vision Pilot Site" section, a "District Grant Request" form, and a "Global Grant Proposals" section. The "District Grant Request" form has fields for "Implementation Year" (set to 2010-2011) and "Status" (set to Draft). The "Global Grant Proposals" section shows a table with columns for "2009", "2010", "2011", and "View All". The table contains data for "Approved Proposals" (12,000), "Pending Proposals" (20,000), and "Rejected Proposals" (3,000). There is an "Add New" button below the table.

A "Resource Links" section on the right side of the page lists: "Future Vision Plan Staff Contacts", "List of Future Vision Pilot Districts", and "Terms and Conditions".

Note: This application is currently in development and screens may look different when it is available for use.

Group Discussion: Sustainability

When planning a global grant, it is important to ensure that the project is sustainable. Read one of the three global grant examples on pages 21-23. With your fellow district leader, for the next 15 minutes, discuss the factors that make the grant sustainable and determine which area(s) of focus would apply. If time permits, read and discuss the other examples. Refer to The Rotary Foundation's Principles of Sustainability and Developing Eligible Projects and Activities within the Areas of Focus on pages 14-17 to assist you with this activity.

Example 1

Rotarians from a club in district A seek to alleviate poverty in a neighboring community. In cooperation with Rotarians from a club in district B, they undertake a community needs assessment and determine that an effective approach to target economic development would be the support of a local women's cooperative. The two clubs apply for a global grant in order to fund:

- The purchase of a mechanized loom and raw materials to allow the cooperative to increase production of textiles for sale in local market
- A literacy program for members of the cooperative
- A professional training seminar for the members of the cooperative, led in part by members of the host Rotary club, in order to provide guidance on the development of a business plan and the importance of accurate financial accounting

What makes the grant sustainable?

Which area(s) of focus does the grant support?

See appendix E to check your responses.

Example 2

Rotarians in club F have identified a local, rural elementary school with poor facilities and a shortage of educational resources. Together with international partners in club G, they conduct a community needs assessment and determine that the school also lacks adequate access to drinking water and is unable to furnish the students with daily lunches. The two clubs apply for a global grant in order to fund:

- A well that will provide clean water to the school and surrounding community
- Training for a local committee to help oversee the maintenance of this water supply, including tools for repairs
- Kitchen equipment and food to provide lunch for each student
- School supplies (books, new desks, etc.) for every classroom
- Professional instruction on curriculum design for school's teaching staff, provided by area education consultant/professor

What makes the grant sustainable?

Which area(s) of focus does the grant support?

See appendix E to check your responses.

Example 3

A team of Rotarians from district X conducts a community needs assessment in a rural village in district Y and determines that the local clinic lacks adequate medical equipment and that the child mortality rate in the village is exceptionally high. Districts X and Y decide to partner on a global grant project in order to fund:

- A generator, updated medical equipment (including incubators), and supplies for the clinic
- A vocational training team of medical professionals (specializing in obstetrics) from district X to provide medical training to local health workers and midwives in district Y on proper prenatal care, birthing techniques, and maintenance for the equipment provided
- An awareness campaign, led by the newly trained health workers and midwives, to inform local expectant mothers of best practices during pregnancy and for newborn care

What makes the grant sustainable?

Which area(s) of focus does the grant support?

See appendix E to check your responses.

District Grants Information Sheet

Districts can request up to 50 percent of their District Designated Fund (DDF) in one annual block grant to support activities consistent with the mission of the Foundation. The district will determine how grant funds will be disbursed for district- or club-sponsored activities. The district also manages the use of these funds, with minimal involvement from the Foundation. Rotarians are not required to use funds for one of the areas of focus, nor are the sponsors of these projects required to partner with another club or district, but they are encouraged to do so. District grants may be used within pilot or nonpilot districts. Districts are encouraged to distribute these funds for relatively short-term activities lasting less than one year. Although a district must be qualified to be eligible to apply for a district grant, individual clubs do not have to be qualified in order to receive funds.

The two-year business cycle for district grants includes a planning year, during which the district can first submit a district grant application, and an implementation year, in which the funds will be paid out and applied to projects. Clubs wishing to apply to their districts for district grant funds should be encouraged to do so during the *planning year* to ensure their projects can be initiated during the *implementation year*. District grants funds cannot be used to reimburse clubs or districts for projects already completed or in progress. The three-person district grant committee (composed of the district governor of the implementation year, the district Rotary Foundation committee chair, and the district grants subcommittee chair) should develop a process for overseeing the distribution of these grant funds and reporting on them to The Rotary Foundation. A district may only have one paid district grant at a time. Grant funds for subsequent years will not be paid until all open grants are closed.

District grant funds can support a variety of activities, provided they meet the eligibility requirements set forth in The Rotary Foundation Grant Terms and Conditions.

Service Projects

District grant funds can be used to support local or international projects, volunteer service travel, or disaster recovery.

Scholarships

District grant funds offer great flexibility for scholarships. Districts may wish to develop their own standards for scholars funded by district grants.

There are no restrictions on the level (university, or graduate), length, or area of study. Scholarships can be awarded in any amount. There is no international requirement for scholars, so students attending local universities can be supported.

Vocational Training

District grant funds can support vocational training opportunities. Grant funds may be used to support local vocational training needs or to fund vocational training teams to travel abroad to either teach or receive training. Districts have great flexibility in determining eligible participants, but may wish to develop their own standards when establishing teams.

Participant eligibility requirements are to be determined by the district. There are no partnership or international requirements for vocational training opportunities. There are no restrictions on the vocational training team size or the duration of the training.

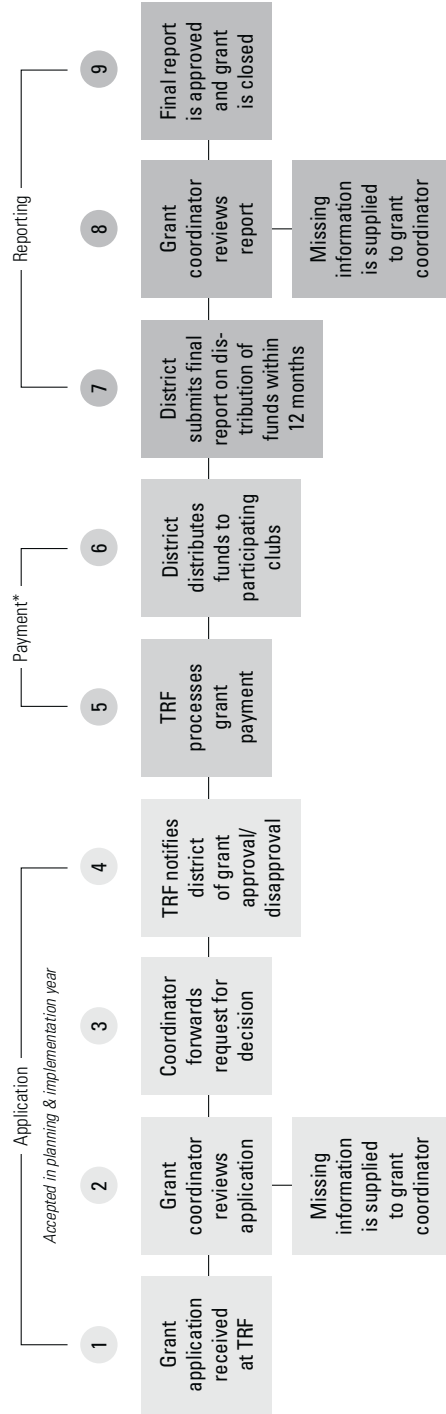
Funding

District grants are funded solely by DDF generated from a district's Annual Programs Fund giving from three years prior, including Permanent Fund *SHARE* earnings. Districts can request up to 50 percent of their DDF each year. Any unused district grant funds are returned to the Foundation and credited back to the district's DDF balance. DDF will continue to rollover to a district's balance for the following year. Rollover DDF will not be used in the calculation of the district grant amount.

District Grants Business Cycle

Future Vision Plan District Grants Business Cycle

Only qualified districts can submit applications.



* Payment information is due by 15 May of implementation year. Districts are allowed only one open district grant at a time.
Past district grants must be closed before a subsequent grant is paid.

Breakout Session Activity: Rotary Foundation Grants

For the next hour, you will be working on several activities on pages 28-38. Approximate time allotments are noted in parentheses.

Part 1: Needs Assessment (30 minutes)

Choose one of the four needs assessment scenarios below and describe the type of project your district would propose. Once you have a project idea based on the needs assessment, use the decision trees related to either vocational training teams, scholarships, or humanitarian projects on pages 32-34, to determine whether the project is a district grant or a global grant.

Scenario 1

Rotarian sponsors have identified a rural community in an area recently beset by regional violence. As a result of this conflict, the country's national health care infrastructure has been badly damaged, leaving many individuals without access to medical attention or equipment. The community has one health care clinic, but it is lacking in trained staff and basic medical supplies and modern equipment. Access to electricity at the clinic is sporadic, making it difficult to safely perform lengthy operations. The local government has begun construction on another health clinic nearby, although it too is lacking equipment and trained nursing staff.

Describe the type of project your district would propose in the space below.

Would this be a district or global grant?

Scenario 2

A Rotary club would like to award a one-year scholarship to a visiting student from a low-income country in a nonpilot district. This student has already secured a financial assistance package from the school but is unable to pay for housing or academic materials. The student, who is in her second year of college, has calculated housing and related materials at approximately \$12,000 for the year. This club has a low giving history and has never sponsored a Rotary Foundation grant. In the past, they have supported similar projects through club-sponsored fundraisers.

Describe the type of project your district would propose in the space below.

Would this be a district or global grant?

Scenario 3

Rotarian sponsors have identified a rural community that has difficulty storing water. Due to their inability to effectively store water, this community is not able to derive a regular, year-round income from agriculture, and many adults and children are suffering from malnutrition. The community needs a more sophisticated water infrastructure that will raise the groundwater level and prevent water runoff. An opportunity to offer instruction in soil preparation and drainage, as well as assistance in creating a viable business model, would enable the community to profit from the land, reduce infant mortality, and improve nutrition.

Describe the type of project your district would propose in the space below.

Would this be a district or global grant?

Scenario 4

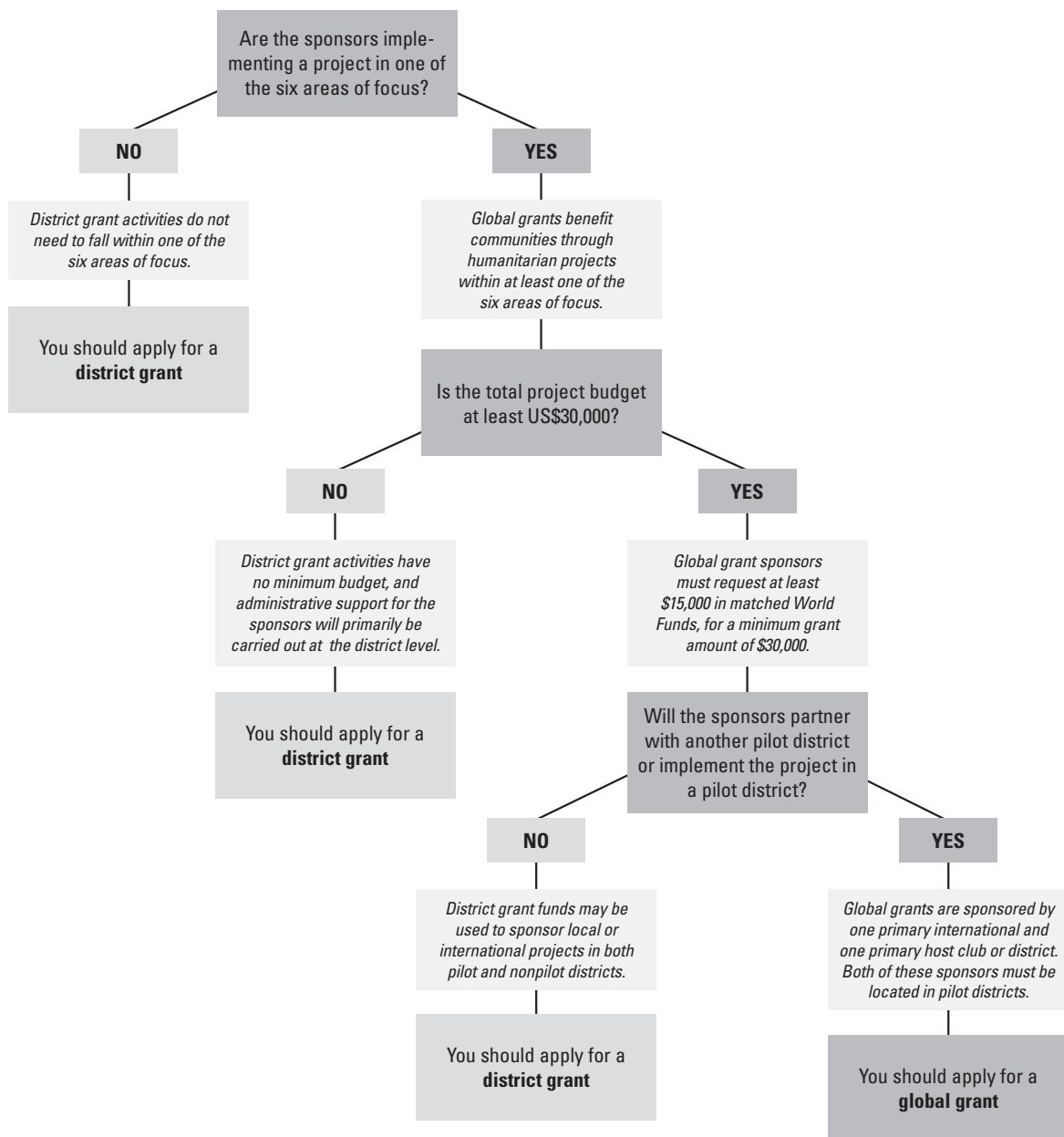
Rotarians have identified a high increase of HIV/AIDS cases in their community. As rates of HIV/AIDS continue to rise in the community, the availability of counseling and prevention resources becomes increasingly urgent. Moreover, because this community is located in a rural region of the country, people are often forced to travel long distances to receive medical attention, and health awareness information is typically scarce. A group of health and social workers in the community is in need of training to provide effective treatment and counseling services to patients with HIV/AIDS and their families. This community is also in need of either an expanded or mobile health clinic to administer to this rural population.

Describe the type of project your district would propose in the space below.

Would this be a district or global grant?

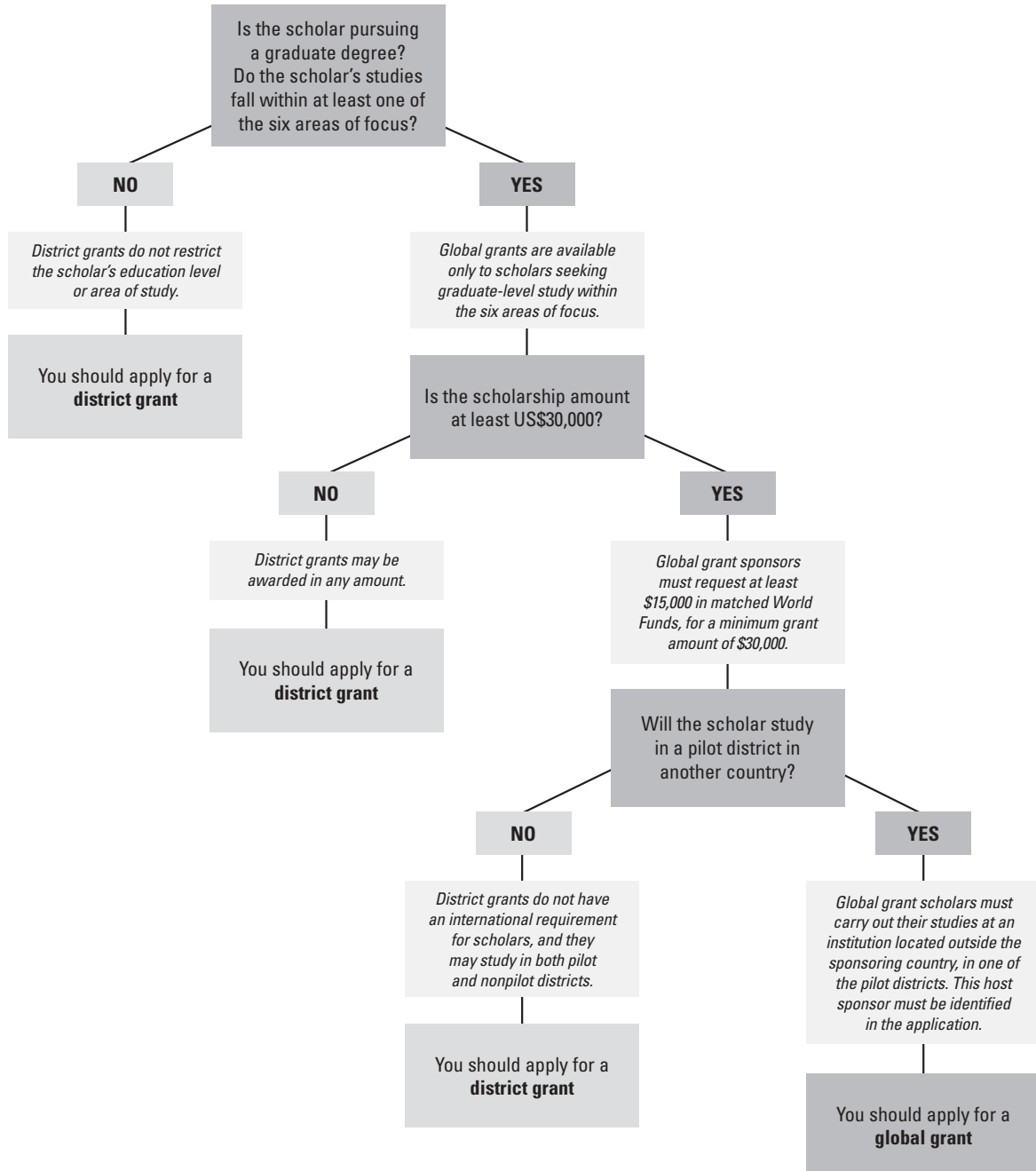
Determining a Grant Type for a Humanitarian/Service Project

A district/club is interested in a **humanitarian/service project** during the Future Vision pilot. The following questions can help Rotarian sponsors determine whether to apply for a global grant or district grant from The Rotary Foundation.



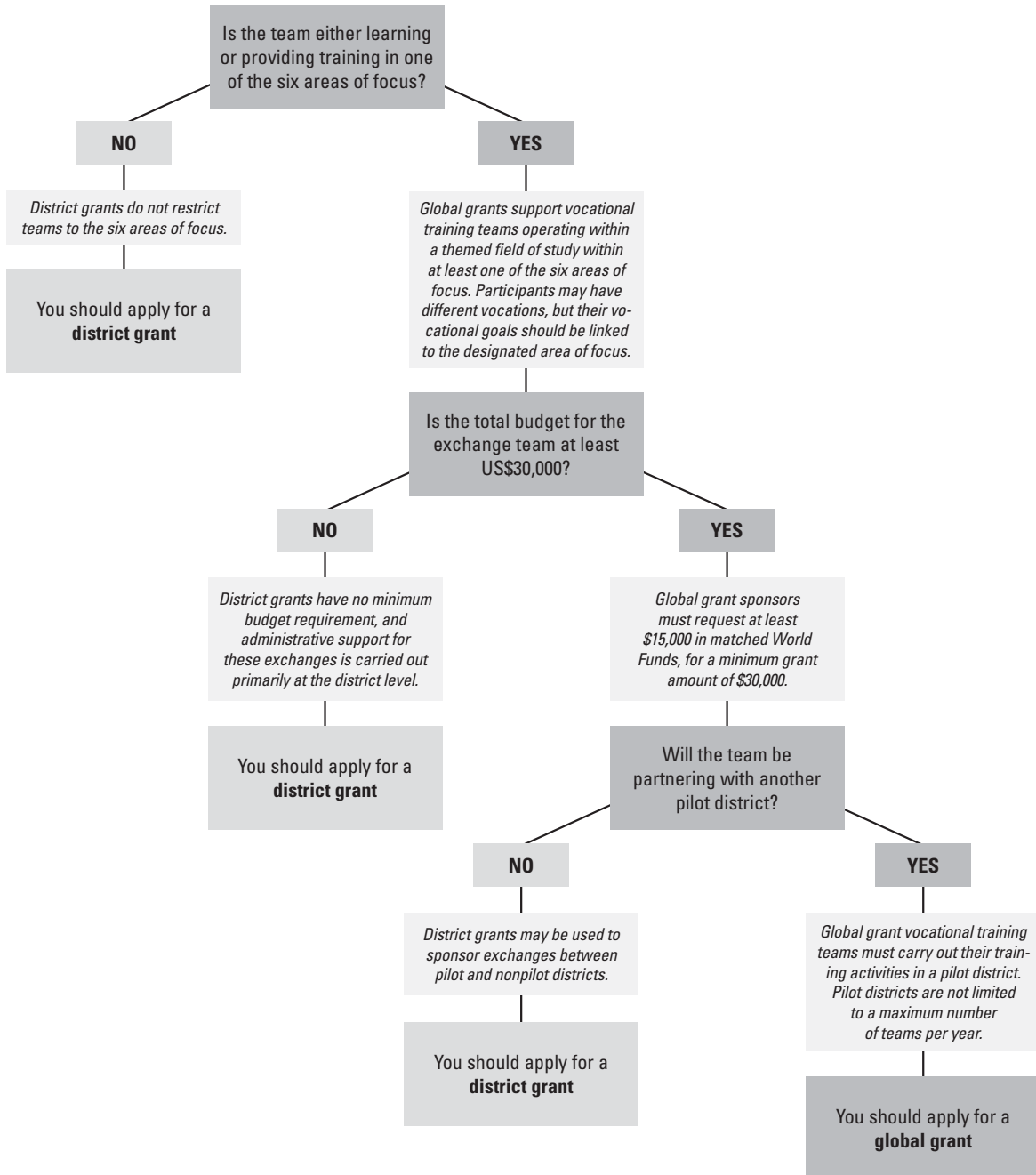
Determining a Grant Type for a Scholarship

A district/club wants to support the studies of a worthy scholar by awarding a **scholarship**. The following questions can help Rotarian sponsors determine whether to apply for a global grant or district grant.



Determining a Grant Type for a Vocational Training Team

A district/club is interested in sending a **vocational team** of both Rotarians and non-Rotarians to another country. The following questions can help Rotarian sponsors determine whether to apply for a global grant or district grant.



Breakout Session Activity: Rotary Foundation Grants

Part 2: Global Grant Proposal (30 minutes)

Read the following proposal for global grant funding. This proposal was sent back to the district because it does not meet the criteria for a global grant. Working with your fellow district leader, determine what needs to be changed to make this an acceptable global grant proposal. Make your changes directly on the proposal.

Questions to consider:

Does the project meet one or more goals of the areas of focus?

Is the project sustainable? If not, what would make it sustainable?

Does the budget meet the requirements for global grants?

Global Grants Proposal

Before you begin, please read the **Terms and Conditions**.

1. The host partner is a:

☒ Club

☐ District

Primary Host Contact Information:

Last Name:	<input type="text" value="Smith"/>	First Name:	<input type="text" value="John"/>
E-mail Address:	<input type="text" value="johnsmith@email.com"/>		
Phone:	<input type="text" value="+00-999-999-9999"/>		
District:	<input type="text" value="1000"/>	Club:	<input type="text" value="South Pole"/>

2. The international partner is a:

☐ Club

☒ District

Primary International Contact Information:

Last Name:	<input type="text" value="Jones"/>	First Name:	<input type="text" value="Jane"/>
E-mail Address:	<input type="text" value="janejones@email.com"/>		
Phone:	<input type="text" value="+00-888-888-8888"/>		
District:	<input type="text" value="1100"/>	Club:	<input type="text" value="North Pole"/>

3. Please describe the benefiting community including its location, using any relevant geographic and demographic information.

4. What community needs have been identified?

Insufficient health care

5. How are these needs currently being addressed with local resources and/or government agencies, NGOs, etc.?

They are not being addressed.

6. Briefly summarize the proposed activity in 250 words or less, including the need it will address, the intended beneficiary(ies), and the potential benefits to the community.

The South Pole Medical Clinic serves over 7,500 people a year. The clinic is using equipment that is more than 25 years old. The Rotary Club of North Pole would like to purchase used (but still serviceable) medical equipment that would be an upgrade to the facility's current equipment.

7. Please list any cooperating organization(s) or university(ies) involved in the proposed activity(ies).

N/A

8. Describe how the benefiting community will be involved in the activity(ies). Provide specific examples.

The staff of the clinic will be using the equipment and providing medical care.

9. Has the benefiting community confirmed that it would like the activity(ies) to take place?

Yes

10. With which area(s) of focus is the proposed activity aligned?

Check the box(es) that apply.

- ☐ Peace and conflict prevention/resolution
- ☒ Disease prevention and treatment
- ☐ Water and sanitation
- ☐ Maternal and child health
- ☐ Basic education and literacy
- ☐ Economic and community development

11. Please describe how the activity(ies) will address the goal(s) of the area(s) of focus.

This project aligns with disease prevention and treatment. We will be providing equipment so that the clinic can provide better care to more people.

12. What will be the immediate and long-term outcomes of the activity(ies)?

Better care and more services available at the clinic. Community health improves.

13. Explain how all involved parties will act to ensure the sustainability of the activity(ies).

The staff will provide required maintenance of the equipment to keep it in working order.

14. Proposed Start Date:

09/01/2010

15. Proposed Completion Date:

10/1/2010

16. Proposed Budget (in US\$):

Medical supplies	16,500
Training materials	1,000

17. Proposed Financing

DDF Amount in US\$	5,000
Rotarian Cash Amount in US\$	5,000
Additional Outside Funding in US\$	
Requested TRF Match in US\$	7,500
Total Financing in US\$	17,500

See appendix E to check your responses.