

REFRAMING DISABILITY

CHALLENGING WHAT WE THINK WE KNOW

Amanda Kraus, Ph. D.

for Rotary District 5500 Conference of Clubs

October 6, 2023

AGENDA

- Reflect on how we have been socialized to understand disability
- Review prevalent models/framing
- Consider how to reframe disability and why that's important



**DISABLED PEOPLE
SHARE A HISTORY
OF OPPRESSION**

FRAMING DISABILITY

Individual

Due to a physiological difference individual is disabled.

The individual is the problem.

Disabled by impairment.

Disability = medical, tragedy, liability.

Access = cure, charity, accommodation.

FRAMING DISABILITY

Systemic

The environment disables people with impairments by design.

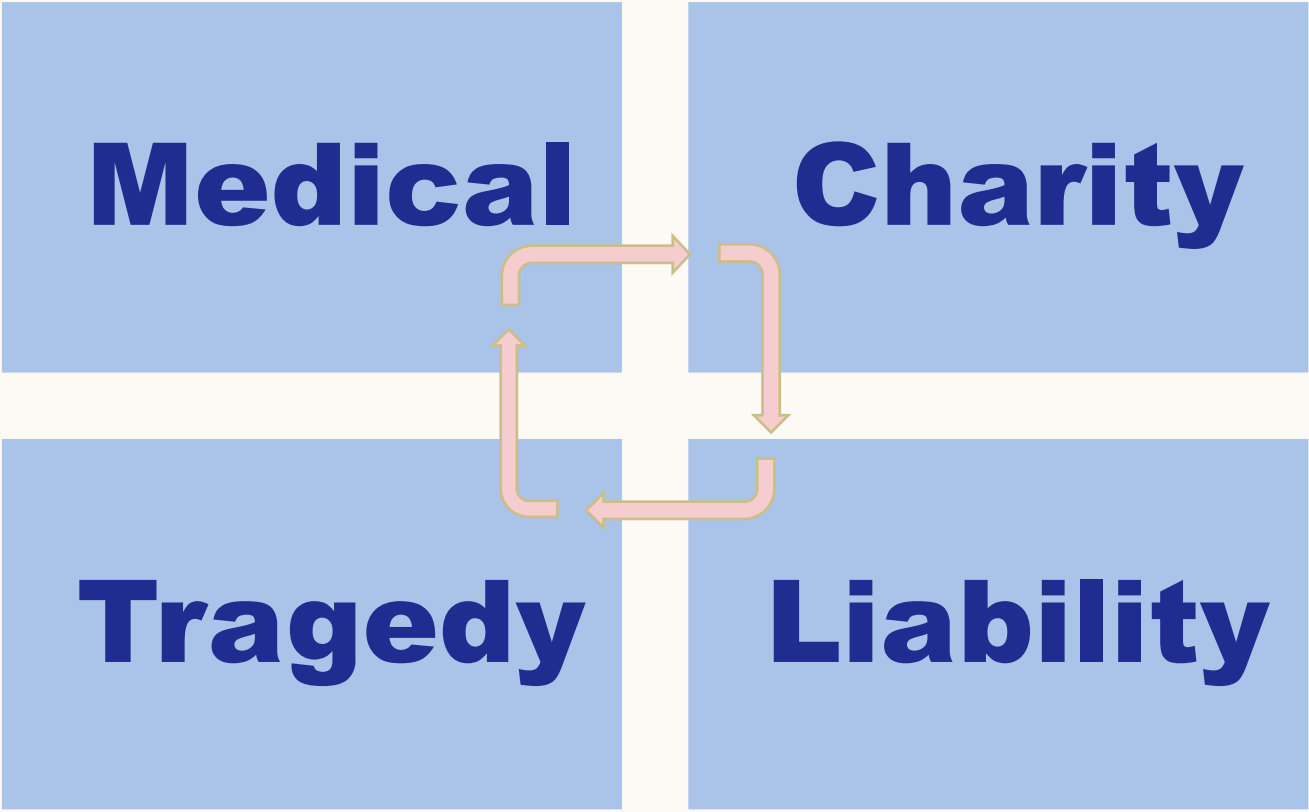
The environment is the problem.

Disabled by design.

Disability = sociopolitical

Access = systemic.

PREVALENT MODELS





DISABLEISM

- Set of assumptions (conscious or unconscious) and practice that promote differential or unequal treatment of people because of actual or presumed disabilities.
- Negatively constructs disability

ABLEISM

- Values able-bodiedness
- Able-bodiedness/mindedness compulsory
- System, belief-structure that advantages non-disabled people.

Stories of Science, Care & Wellness

A Baby Hears His Parents' Voices for the First Time

Eleven-month-old Julian Epstein experiences the gift of sound.

Julian "Ace" Epstein was born deaf.

Today, he will hear for the first time.



Someone I love
needs a cure.



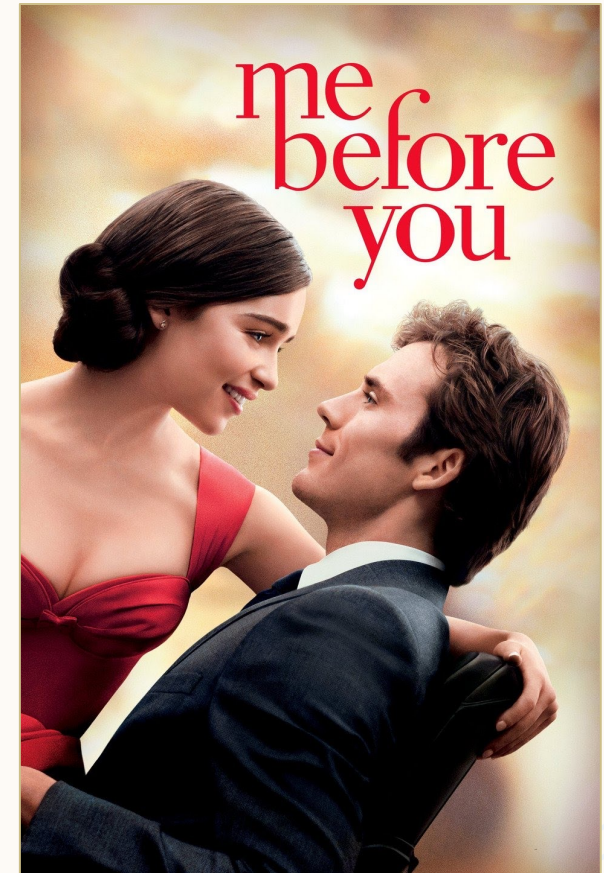
Support
AUTISM
Research

don't worry.
My disability
isn't contagious...



But my smile is!!









REFRAMING IN ACTION

Person-first

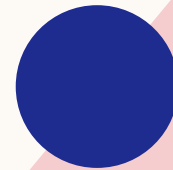
- I am a person with a disability.
- Distances person from disability.
- I am separate from what you think disability is.

Identity-first

- I am a disabled person.
- Reflects social model – disabled by environments, attitudes, barriers...
- Consistent with disability studies and many disabled leaders, including AHEAD

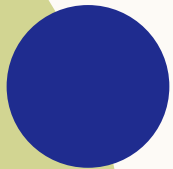
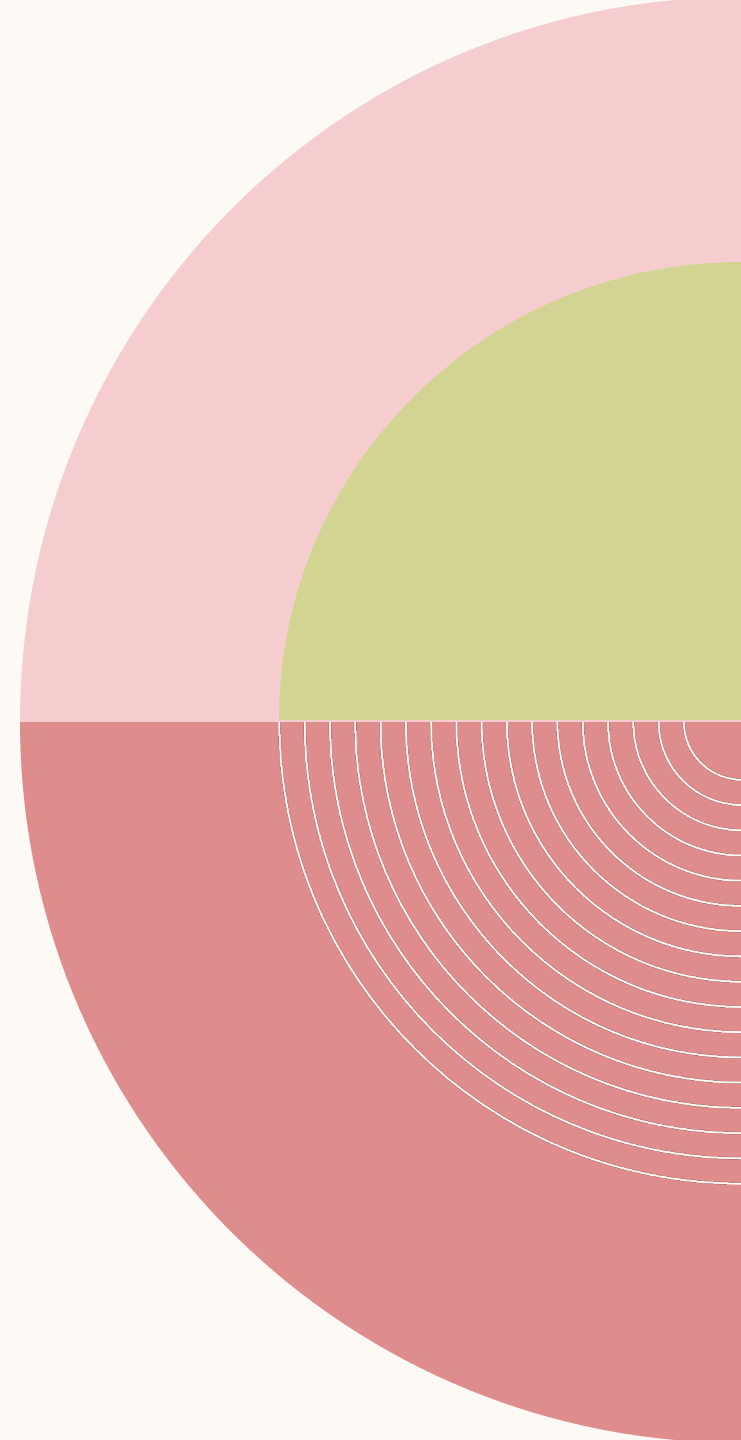
UNIVERSAL DESIGN

Design of products and environments to be usable by all people, to the greatest extent possible, without the need for adaptation or specialized design. Ron Mace, Center for UD



REFRAMING IN ACTION

- Respect disabled people's choices in language, helping, etc.
- Consider disability on par with other identities/experiences (if you would/would not for other groups).
- Consume media critically.
- Design with flexibility and inclusion in mind,(deadlines, captions, options, digital content), anticipate difference





RESOURCES

[Planning accessible events](#)

[IT Accessibility](#)

drc.arizona.edu



THANK YOU

Amanda Kraus, Ph. D.
akraus@arizona.edu