



www.Rotary5790.org

Volume 72, Issue #5— November 2009



Rotary District 5790 Newsletter

DG John—Monthly Update

Click the link below to go to that page

District Governor Letter	1
Foundation Thoughts by Dan Morales	2 & 3
Annual Giving by Bill Harnage	4
Planned Giving—by Chuck Kurtzman	5 & 6
Youth Exchange—by Daniel Kano	7
Azle Rotary Club	8
Fort Worth East Rotary	9 &
Hurst Euless Bedford Rotary	11 & 12
Mid Cities Pacesetters	12
September 2009 Attendance	13 & 14
Train Trip to Montreal	15
Polio Dinner in Abilene Recap	16
Photos from Around the District	17 & 18
Upcoming Club Events	19
Clubs—In the News	20
Club Meeting Changes	20
Concert to End Polio	21
Upcoming in December	21

Hello Rotarians of District 5790,



2009-2010 DG
John and his wife
Claire

During the month of October I continued to have great club visits as district governor. Each one of our clubs is doing fantastic projects in the local communities. Many of the club projects being done are totally unique. And the efforts are having a great impact in their local communities.

Thank you to everyone who participated in the "World Polio Day" projects. As individual clubs and Rotary District 5790 we have been totally successful. Working together we earned over \$64,000 for Polio Plus, which equates to \$1,000 per club toward Rotary International's goal of \$2,000 per club.

A very special thanks and commendation to the committee of seven Rotary Clubs of Abilene, Abilene Southwest, Abilene Wednesday, Coleman, Stamford, Hamlin, and Haskell. Under the leadership and direction of Bob Hunter and Jim Aneff, their committee put together a "World Polio Day" Dinner at Abilene Christian University. The dinner was attended by over 375 people who donated a net of over \$50,000 to our Polio Plus Campaign. WOW!

For "World Polio Day" many other clubs did many projects: The two Mansfield Clubs had a raffle for a hunting gun which earned \$4,400. Great Southwest Club hosted a pancake breakfast. The Arlington Sunrise Club conducted a Blood Drive. The Fort Worth East Club had a special club walk from their meeting place to the Fort Worth Transportation Center. And the Burleson and Cleburne Clubs got together and had a 15.5-mile walk-run-ride from the Johnson County Courthouse to the Burleson Chamber of Commerce Building.

November is Foundation Month, and, in support of the Rotary Foundation, our efforts will again be directed to meeting our District's Every Rotarian Every Year (EREY) goal of \$100 per Rotarian.

On behalf of the future polio victims who will never be, a special thanks to everyone.

Happy Thanksgiving,

John



Dan Morales is District Foundation Chair. His is PDG 2006-2007.

He can be reached by e-mail at:

workoutdan@aol.com



Rotary District 5790 Newsletter

Page 2



ROTARY FOUNDATION THOUGHTS



It all started with me cleaning my room and closets in October. Since my years as District Secretary and District Governor, I have accumulated countless notebooks, binders, and CD's (no not money). During these years, in my haste to get the job done, I forgot to label something or categorize it. I am just now finding out that some of this information is quite useful. Upon reviewing a CD, I came across a few good points on our Rotary Foundation, and I would like to share them with you.

Educating Rotarians about the work of The Rotary Foundation is one of the most effective tools in gaining and broadening support of our Annual Programs Fund and the programs of the Foundation. The Programs of the Rotary Foundation are dynamic and are ever changing. Exposing our Rotarians to this area of Rotary can open doors and bring excitement to clubs.

The Foundation is the primary way in which we are involved in the Fourth Avenue of Service: International Service.

PolioPlus



Rotary International

The Rotary Foundation was started with a gift of \$26.50 from the Rotary Club of Kansas City in 1917 — the leftover profit from the international convention that year. Earlier that same year, Rotary's sixth president, Arch C. Klumph, suggested the creation of just such a fund. The very first grant made by The Rotary Foundation was to the International Society for Crippled Children. The idea of international service has grown. Just in the last 25 years, Rotary and Rotarians have contributed over US\$800 million to the polio eradication effort.

In the words of professional volunteer, Charlotte Lunsford: "We won't always know whose lives we touched and made better for our having cared, because actions can sometimes have unforeseen ramifications. What's important is that you do care and act."

Group Study Exchange (GSE) was founded as an educational program of the Foundation in 1965. In fact, 2009-2010 will mark the 44th Anniversary of GSE! As a result of this popular program, thousands of young professionals from more than 100 countries around the world have received vocational training, experienced another culture, and benefited from Rotarian hospitality around the world.

This is the Rotary approach to creating an internationally minded workforce and building cross-cultural friendships. Our district recently hosted a GSE team from Mexico and sent a team to Mexico. Because of GSE, we meet new people and forge relationships. We learn to work together.

Then we develop programs in our community and across the globe.

**EVERY
ROTARIAN
EVERY
YEAR**

We make our annual contributions to The Rotary Foundation knowing that 50 percent of that gift will come right back to our district in three years to be used for humanitarian and educational programs chosen by us. This includes Ambassadorial

(Continued on page 3)



FOUNDATION THOUGHTS, Con't

(Continued from page 2)

Scholars, Matching Grants, and District Simplified Grants that may be used for projects in our local community. The other 50 percent also benefits our district indirectly, because it is used to fund a variety of programs in which we can participate.

The Rotary Foundation is our Foundation. It is critical that we take ownership of it and do what we can to change and save lives, in our community and across the globe.



Fairly new is the Rotary World Peace Fellowships. Rotarians have always wanted to do more than just talk about world peace. In 2002, The Rotary Foundation established seven Rotary Centers for International Studies in peace and conflict resolution around the globe. Our Foundation contributions support the best and brightest scholars from a variety of nations as they develop skills and attitudes to prepare them for leadership positions in our increasingly complex world. A recent Rotary World Peace Fellow graduate from Duke University, Bautista Logioco, sponsored by the Rotary Club of La Plata Tribunales, Buenos Aires, Argentina (District 4910), after his experience, began full-time work at the Organization of American States (OAS) in Washington, D.C., as a program officer in the Special Area for the Promotion of Dialogue and Conflict Resolution.

We should remember International Service is an important part of what makes us proud to be Rotarians. The Every Rotarian Every Year effort is an ongoing reminder for all of us to give generously to the Foundation.



And finally let's talk about securing the future with the Permanent Fund.

One of the many ways to support The Rotary Foundation is by including it in your estate plans. Many other Rotarians have, enabling our Permanent Fund to grow and providing long-term stability for Foundation programs. Arch C. Klumph, who conceived the idea of our Foundation in 1917, said it best: "We should look at the Foundation as being not something of today or tomorrow, but think of it in terms of the years and generations to come. Rotary is a movement for the centuries."

Our investment in time, talent, and financial resources is an investment in making the world a safer and healthier place for our children and our grandchildren.

After reviewing this information, I realized I need to organize my files more often.



ANNUAL GIVING



PDG Bill Harnagel

District Annual Giving
Chair

817-422-6335

bharnagel@gmail.com

I have always believed that Annual Giving is the life blood of the Rotary Foundation (TRF). It is the source of funding for the many programs that Rotarians know about and, in many cases, are directly involved with – Matching Grants, District Simplified Grants, Group Study Exchange (GSE), Ambassadorial Scholars – and the list goes on. BUT, none of these events happen without funding provided by the Annual Fund. And what is the source of this funding? - Rotarians (but you knew that).

Let's trace the path of this funding. When you contribute to your Paul Harris Fellow (PHF) you are contributing to the Annual Fund. You can send in your contribution through your club or you can make your contribution on line at the RI web site (do you know how to do that?). When you contribute, you provide your name, your club and district information. You get credit towards your PHF, the club gets credit for your having contributed, and the district gets credit for your contribution. This is very important as at the end of the Rotary Year, TRF credits the district for the total of contributions and then invests those dollars for three years. They use the dividends and interest from this investment to pay the overhead at RI headquarters. At the end of the three years, the district dollars contributed turn into Annual Fund dollars and go to the support of Rotary projects. That is why RI can proudly state that **every dollar** that Rotarians contribute to their PHF, and the Annual Fund, go to support Rotary projects. There are few, if any, other charitable organizations that can make that statement.

Now, do you know that your club can be recognized by TRF for your Annual Fund contributions? If **every member** of your club contributes \$100 to the Annual Fund during the Rotary Year, your club is designated as a Sustaining Member Club and will receive a banner to display. This is probably the most prestigious Annual Giving award that TRF has. If all members of your club contribute to the Annual Fund (not necessarily \$100) and the per capita giving is \$100 or more, your club is designated as an EREY Club and will receive a banner. TRF also recognizes the top three clubs for per capita giving in each Rotary district with banners. Locally, DG John Miller as initiated the district STAR program whereby a star will be awarded to each club that has a per capita annual giving of at least \$100. If the club's per capita giving is \$200 or more, the club receives two stars and so it goes as the club's per capita giving increases. How many STARS would you like to see your club receive?

There is much more that can be discussed about Annual Giving. It is important for Rotarians to understand how giving works so that when there are questions about why giving is so vital to Rotary's mission, you can provide the answer. Please contact me if you have questions.



PLANNED GIVING



Chuck Kurtzman is Chair—Permanent Fund for District 5790, and Major Gifts Advisor. He is PDG 2003-2004.

For more information on how you can include the Rotary Foundation in your estate planning contact Chuck at:

c.kurtzman@ourblooddrive.org

Or 817-870-9884

The Rotary Foundation offers many ways for you to help further its mission. Here are some of the available planned giving options:

Life income agreements

Have you ever thought about making a contribution to The Rotary Foundation during your lifetime but were concerned about outliving your resources, meeting family obligations, or preparing for retirement? With careful planning, it's possible to enjoy the advantages of a life income gift and turn appreciated assets into an income for yourself or others. Life income agreements are one way to make a significant charitable contribution during your lifetime while furthering your financial plans and security.

Benefits

- Annual payments for you or another beneficiary
 - Immediate federal income tax deduction
 - Potential estate tax savings
 - Increased income from low-yield assets
 - Avoidance or reduction of capital gains taxes on gifts of appreciated assets
 - Opportunity to be recognized as a Major Donor to The Rotary Foundation
- Satisfaction in knowing that your contribution will make a difference in many lives

Types of life income agreements

Charitable gift annuities

In exchange for your gift of cash or marketable securities to the Foundation, you (and another beneficiary or a survivor) receive guaranteed fixed payments for life. Under the terms of a charitable gift annuity agreement, you make a gift of cash or publicly traded securities and, in return, collect regular payments for life that never change in size or frequency, regardless of changes in the economy. Payments to you (and another beneficiary, if you wish) are backed by the Foundation's available assets. The number of annuitants and their ages determine the payout rate. The Rotary Foundation's Permanent Fund receives the charitable portion of the gift upon the death of the last annuitant. Donors interested in the stability of fixed payments tend to favor this type of life income agreement.

Charitable remainder trusts

A charitable remainder trust is a trust into which you irrevocably place assets in exchange for an income, either for life or a certain number of years. These trusts allow you to reduce capital gains taxes on gifts of appreciated property and are a great strategy for incorporating charity into your estate plans.



PLANNED GIVING, Con't

*Be sure to include
The Rotary Founda-
tion in your Es-
tate Planning.*

*It is one of the
best well run
charitable organi-
zations in the
world.*

A charitable remainder trust can be funded with cash, real estate, publicly traded stock, closely held stock, bonds (including tax-exempt bonds), and certain other assets. You'll receive income at a rate agreed upon by you and the Foundation, with a minimum of 5 percent of the initial trust principal. There are two types of charitable remainder trusts:

- Unitrust – Income fluctuates annually with the trust's fair market value
- Annuity trust – Income payments are fixed and determined when the gift is made

Charitable bequests

Each year, thousands of Rotarians and friends designate a portion of their assets in their estate plans to benefit the Foundation. Bequests made through wills or living trusts play an important role in securing the future of Foundation programs by building the Permanent Fund. These commitments also enable individuals to make gifts that may not have been possible during their lifetimes.

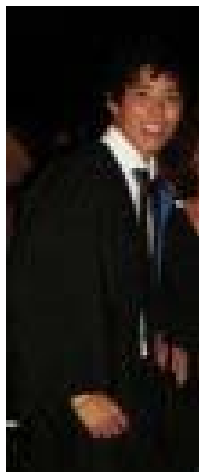
Life insurance

By making a gift of life insurance to The Rotary Foundation, you help secure the future of Foundation programs. Canadian or U.S. donors who irrevocably assign ownership and beneficial interest to the Foundation in a policy may also qualify for a charitable tax deductions.

To discuss potential gifts to the Rotary Foundation contact:

Chuck Kurtzman,
District 5790 Major Gifts Advisor,
817.870.9884

c.kurtzman@ourblooddrive.org



Daniel Kano was an Youth Exchange Student hosted by Arlington North Rotary in 2002-2003. He is from Sao Paulo Brazil.



DANIEL KANO—EXCHANGE STUDENT

It is time to share my reflections on this experience—7 years later. I am 25 years old now (was 18 when did the exchange), and yes, time flies away...

After my one year abroad living in the great city of Arlington (and I mean that!), I got back to Brazil, joined the Sao Paulo University and got a BA in Business Administration. Meanwhile, I started working in an agribusiness company called Syngenta. I am still working for this company. We are mainly a chemical company created by the merger of Novartis Agro division and ICI Zeneca. We sell Crop Protection products such as herbicides, insecticides, fungicides, and also seeds & traits like Corn, Soybean, Flowers, Watermelon, among others. I know that we have a production plant in Houston, and NAFTA headquarters are located in Greensboro NC, and Minnetonka MN. I worked in the Sao Paulo office for about 2.5 years, then I got transferred to the Panama Hub office of the group.

I have been living and working in Panama for about 15 months. I am also taking a Masters in Corporate Finance in a local university. It is a nice country to live in.

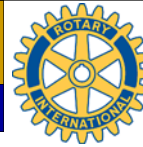
Enough about my career, since the topic was supposed to be the Rotary Youth Exchange Program, and how does it affected me. Honestly, I can say that such program is not for every teenager out there, and neither (in my opinion) it is supposed to be. I say that because it is not easy to leave behind your family, your friends, girlfriend, and pets. It is not easy to go alone to a place you have never been before and live there for a while; it is not easy to make new friends again; it is not easy to understand cultural differences. But, as they say "no pain, no gain". It is amazing how the human being works. Whenever out of their comfort zone, when facing difficulties, that is the moment when someone learns the most and grow from it.

I include myself on the group of ex-exchange students whom got depressed for a while. However, the turnaround was amazing. What I have managed to learn in that 02-03 year is priceless. I guess I have learned more in that year than in any other years of my life. This is why such program is not built for everyone. The curiosity to discover "what's out there?" needs to be bigger than the scary moments of loneliness. All can be reduced in one phrase: THE JUICE WAS WORTH THE SQUEEZE!

I had my ups and downs during that year, but after I got back to Brazil, after analyzing it in my mind over and over, my conclusion is that the Rotary Exchange Program brought me, so far, the best year of my life. It opened so many doors for my future... I became more independent, confident.

The Rotary Club support also plays a key role in the picture. I mean, it is ok to face challenging problems, but if you face something too big... well, you will not be able to handle it and you are not going to enjoy anything from it. And that is why the Rotary support is so important. This is the difference between the exchange program provided by you guys and one from a tourism agency. Generally, the agency focuses on the profitable side of the story, so they do not care in supporting you that much.

I would not be here in Panama, again away from my home country, my friends and family, if I had not had the exchange student experience. Now I have the chance to know more about a different culture, travel to different places, and learn another language. I honestly do not see myself getting back to Brazil, at least in the short term. When my contract here expires, I am looking possibly to live Europe.



AZLE ROTARY CLUB

Service above Self.... Azle Rotary has been working very hard to support our community in various ways.

We have supported our students in our community by helping them attain several academic goals. This year we have given out two, \$1,000 scholarships to Azle High School students. We were blessed to have one \$500 scholarship given out by the Bill Spearman Memorial. Azle Rotary also awarded two scholarships for students to attend a technology camp. Our club had many members working hard to sell raffle tickets to support our Dictionary Drive. This was a huge success and we were able to pass out over 300 dictionaries. Every third grade student enrolled in our school district was provided a dictionary.

In the sports arena, Azle Rotary sponsored an Azle Little League Baseball Team. This team was provided baseball attire for their spring season. Azle Rotary was active again in the spring by sponsoring a car show. We had a great turn out and money made from this event went to our high school scholarships.

In May our club worked with Habitat for Humanity and helped with building a home for a local family. This event was an amazing project and touched our club in so many ways. We are looking forward to helping out again with supporting this program.

In June the club also participated and helped in promoting the grand opening of our new Azle Memorial Library. Members from our club cooked and passed out free sausage on a stick during a fun filled day at this grand opening.

This month our club also met the need for many of our local families in need of help with food. We were able to provide the cost of a new freezer to support the Castle Hills Mission House. This mission house can feed up to 175 families when in operation. The freezer is a must to help keep food fresh until families can pick up their food.



Alisa Johnson is President, Azle Rotary Club for 2009-2010.

She can be reached at

ajohnson@azleisd.net



One of our clubs greatest prides is our Interact Club at the Azle High School. We currently have eighteen students that have a high level of enthusiasm and passion for helping others. On October 19, these students worked on decorating boxes and organizing food items that they had donated for their food drive that will take place on Nov. 19th. Working with Azle

ISD social worker, the Interact Club has adopted ten families to provide a Thanksgiving Meals. The rotary club will also support this program by donating the meats to make this meal a true blessing and feast for these families.



Our club's next event will be October 31st. Azle Rotary will sponsor a blood drive hosted by Cater Blood Care starting at 9:00am and ending at 3:00pm. The location for this will be held at the Azle Brookshire's.



FORT WORTH EAST ROTARY

How would one describe the perfect Rotary Club? I believe one would look for a Club that has a high esprit, strong camaraderie, the desire to serve, and willingness to participate. The Rotary Club of Fort Worth East meets all these criteria. So does it qualify as a "perfect" Rotary Club? Well, darn near! For a small Club of 35-40 members, just look at all we accomplish.

Each year in the Fall the Club participates in the Cowtown Brush-Up project sponsored by the City of Fort Worth. On a designated weekend members of the Club paint the home of a resident who is unable to do so alone.

An ongoing project for many years is the weekly Meals on Wheels delivery by many of our Rotarians. Subscriptions to the *Rotarian Magazine* have been provided to Baylor All Saints and Harris Methodist Hospitals to spread the word about all the great things Rotarians do all over the world.



President-elect Alyson Farmer, left, and David Hinshaw, right, help with the Cowtown Brush Up project in October 2008

For Thanksgiving, Bob Whitt organizes members who prepare and serve Thanksgiving dinner for those who otherwise would have no way to celebrate this holiday.

Annually, Club members donate funds for a Roto-Santa project to provide toys for needy children. This endeavor is organized by Past President Ronnie McGlothlin. Elaine Ryan arranged for our members to attend the Rangers Ball Game in September to raise funds for Polio Plus.



FW East Rotary and others (including some spouses and Rotoractors) walked from East FW to Downtown.

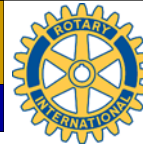
On Oct. 24 we walked four miles on a major thoroughfare from our Club meeting place to downtown Fort Worth to bring attention to the campaign to **End Polio Now**.



The marchers for End Polio Now end their march with pizza and soft drinks at the Intermodal Transportation Center in downtown Fort Worth. DG John Miller and PDG Chuck Kurtzman and wife Ellen met us there.

Past President Paula Vastine-Norman arranges for our Club's participation in the District Blood Drive Challenge established by PDG Chuck Kurtzman.

David Hinshaw monthly arranges a fellowship dinner in a local restaurant where Club members meet just to share each others' company.



FORT WORTH EAST, Con't

One of our notable Rotarians, charter member PDG Arvil Lewis, was honored by our Club with a Rotary watch to acknowledge his service and near perfect attendance for more than 50 years. On December 7 we will host former members of our Club with an Alumni meeting to honor them for their past service to our Club and remember those who have passed on.

We are known in our local community for the work we have done using District Simplified Grant funds. On one of our very busy streets on the City's bus line the Rotary Club of Fort Worth East constructed an outdoor waiting area to help keep riders out of the weather. For the past two years we have used District Simplified Grant funds to send students of Cassata High School on field trips. Cassata High School serves students who might otherwise not graduate and often do not have such opportunities.

We are also very active in the international arena. For a number of years various members have utilized Rotary's Friendship Exchange Program to visit Brazil, Indonesia, India, Mexico, and Nigeria. The Rotary Club of Fort Worth East has participated in Matching Grant Programs with India and Mexico.

RYLA is also on our agenda. The Rotary Club of Fort Worth East provides an ice cream social for the students and staff who participate in RYLA. Past president Gerald Daniel has been instrumental in promoting the Four Way Test Speech Contest and is currently working to form an Interact Club with one of the local high schools. John Wright is the sponsoring member for the UTA Rotaract Club.

The funds for most of these projects come from our single fund raiser, FUNNEL CAKES. We could easily be labeled the "Funnel Cake" Kings of the District. One Rotarian, Bob Whitt, chairs this project, but many of our members and Rotaractors help to make it successful. Bob was recently named by DG John Miller the Rotary Builder of our Club. It makes for a long, tedious day, but is fun and builds lasting unity and team spirit.

Well, it is easy to see that the Rotary Club of Fort Worth East truly is near perfect. We meet all the criteria mentioned above and all serve in a spirit of giving and friendship.

For a small club we have a lot on the ball – thanks to many dedicated Rotarians.



DG John Miller presents the Builder Award to Bob Whitt during his visit to our Club in August.

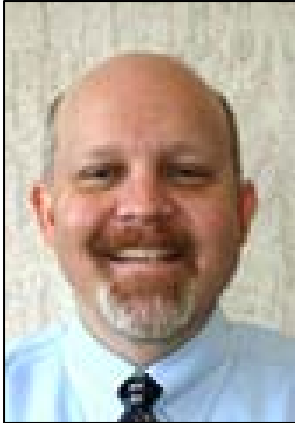


Pictured are the hemodialysis machines, purchased with Matching Grant funds from the Fort Worth East and the Arlington Sunrise Rotary Clubs for Calcutta, India.



HURST EULESS BEDFORD ROTARY

The HEB Rotary Club continues to be a strong active club committed to Rotary and all Avenues of Service. Club President Dale Harwell has embraced this year's Rotary Theme "The Future of Rotary is in your Hands" and has challenged each member to seek new ways to be active in our club and to help shape the future of Rotary.



Dale Harwell is President, H-E-B Rotary Club.

He can be reached by e-mail at:

dhawell@ci.hurst.tx.us



Focusing on future, our club sponsored two students to the RYLA camp this summer. Our RYLA Students Bonnie Brown and Lauren Apgar provided an overview of their experiences at a club meeting. Facilitated by District Governor Elect Paul Lucas, the students shared their experiences at camp from "Dorky" Contra dancing to developing new friendships and participating in leadership development classes.



On a new twist, President Harwell and Vocational Service Chair Georgia Kidwell initiated Public Works Director Appreciation Day. Our club recognized the Public Works Directors in Hurst, Euless and Bedford for the enormous and sometimes forgotten contributions they make to our communities. Delivered with appreciation



and a sense of humor, the Directors provided the club with an overview of the many activities being undertaken in our communities.

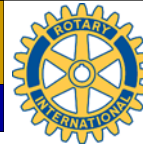


Through a local District Simplified Grant project, we continue to support The Clubhouse for Special Needs, a non-profit organization whose mission is to provide a safe environment of fun and fellowship for mentally/physically challenged teenagers and young adults. This year, through a \$2,000 matching grant, The Clubhouse purchased a wheel chair ramp allowing participation in field trips for those teenagers who had not been able to participate due to lack of accessibility. Director Darlene Hollingsworth thanked our club and provided pictures taken at the first outing utilizing the ramp. She stated that when Kaylee was able to join the others on their outing, "You have never seen a smile as big!"

The club had exciting news on the International Service level when we learned that our International Service Chair Dr. Ellen "Aileen" Curtin, was selected as an alternate group leader for the Group Study Exchange team trip to India. Thankfully, Aileen already has her passport and is ready to go "if called."



Peanuts, Cracker Jacks and Red T-Shirts seemed to be the theme when our club members participated in the End Polio Now event at a Texas Ranger Baseball game. To continue our support of the Polio Plus Program, we plan to hold a silent auction at our annual Christmas Dinner. Funds from the auction will go to support Polio Plus. Other upcoming club events include our Special Olympics award luncheon, 4 Way Speech Contest, and the always popular Top 10 Banquet recognizing the top ten graduates from our area high schools.



HURST EULESS BEDFORD ROTARY, Con't

Fun for the whole community, last year's golf tournament was another huge success! The annual golf tournament supports our efforts to give back to both our local and international communities. This year's tournament will be at Texas Star in Euless, Texas, on June 11, 2010. Go ahead and mark your calendar and plan to participate for some great fun while contributing to HEB Rotary Club's ability to give back to the community.



HEB Rotary Club President Dale Harwell and all our members welcome you to visit our weekly, Tuesday meetings or any of our other fun events. Visit our website at www.hebrotary.org to learn more about HEB Rotary Club.

MID CITIES PACESETTERS ROTARY



Will Griffin is President, Mid Cities Pacesetters Rotary during 2009-2010.

He can be reached by e-mail at:

wgriffin@wilgriffin.com



From left to right – Rotarians Geoff Graham, Club President Wil Griffin, Reggie Parr, Tournament Chairman Rick Doggett

Under the outstanding leadership of tournament chairman and club member, Rick Doggett, the Mid-Cities Pacesetters Rotary Club recently held its 8th Annual Rotary Golf Classic at the Texas Star Golf Club in Euless, TX.

The all-hands event attracted over 80 golfers (and would-be golfers) and raised over \$10,000 that will be used to support the club's charitable giving during the 2010-2011 year under the direction of President-Elect Joe Wilkinson.

Club President, Wil Griffin said of the event, " At the beginning of the year, I expressed my concerns to our Board members that participation and revenues might be down for this year. The Board decided to re-double our efforts and make this one of the best tournaments / fundraisers ever.

Thanks to Rick Doggett, Joel Hueske, Brandy Lane and all the members of their team and hard working members of our Club who assisted, it worked! ."

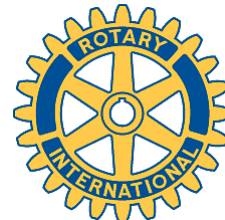


Three of the recipients of the clubs financial support made presentations at the club meeting on Friday, October 16.

Representatives from Hugworks, Care Corps and CASA shared updates and thanks to the club during

its final meeting at its location at Luby's Cafeteria in Bedford.

Mid Cities Pacesetters Rotary Club has changed to Texas Star Golf Course and Conference Center in Euless, due to the closing of Luby's Cafeteria. The meetings will begin promptly at 7 am.

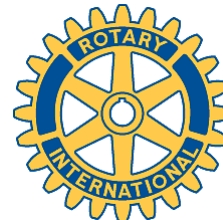


Club Attendance is to be submitted to the District Secretary within 15 days after the last meeting of the calendar month. Club Secretaries should submit their attendance to District Secretary Richard Sherman at the following e-mail address: rsherman5790@sbcglobal.net or it can be done online through Club Runner.



Rotary District 5790 Newsletter

Page 14



SEPTEMBER 2009 CLUB ATTENDANCE, Con't

Rotary Club	Members	%	Mtgs	Members	Add/Loss
	9/1/2009			9/30/2009	
Gainesville - W	61	45.00%	4	61	-
Graham - F					-
Granbury - TH	52	62.00%	4	53	1
Grapevine - W	89	77.50%	5	89	-
Great SW Arlington - W	45	67.00%	5	44	(1)
Hamlin - W	20	85.00%	5	22	2
Haskell - TH	25	47.00%	4	25	-
HEB - T	64	85.00%	5	64	-
Highland Village	34	83.00%	4	29	(5)
low a Park - W	16	82.00%	5	17	1
Keller - T	43	66.86%	4	43	-
Kennedale	30	54.00%	5	30	-
Lake Ray Roberts - T	14	77.00%	5	14	-
Lewisville Morning - TH	28	91.26%	4	29	1
Lewisville Noon - W	61	73.67%	5	61	-
Mansfield - T					-
Mansfield Sunrise - TH	20	86.25%	4	20	-
Metroport - F	33	73.00%	4	33	-
Mid-Cities Pacesetters - F	51	69.00%	4	51	-
Mineral Wells - W	41	71.50%	4	41	-
Nocona - T					-
Sanger - T	11	36.00%	4	11	-
Southlake - T	17	82.00%	4	15	(2)
Stamford - T	36	68.00%	5	36	-
Stephenville - TH	28	69.45%	4	27	(1)
The Colony - T					-
Vernon - T	44	60.47%	5	43	(1)
Weatherford - T	113	70.57%	5	114	1
Western Fort Worth - T	74	81.25%	4	73	(1)
Wichita Falls North - F	35	81.25%	4	36	1
Wichita Falls - TH	91	59.00%	4	90	(1)
Wichita Falls Southw est - M	24	81.00%	3	24	-

Club Attendance is to be submitted to the District Secretary within 15 days after the last meeting of the calendar month. Club Secretaries should submit their attendance to District Secretary Richard Sherman at the following e-mail address: rsherman5790@sbcglobal.net or it can be done online through Club Runner



TRAIN TRIP TO MONTREAL—2010 INTERNATIONAL CONVENTION



It's not too early to start thinking about the International Convention!

The 2010 Convention will be in Montreal Canada in June.



Pre - RI Convention 2010 Train Trip
Montreal, Canada
June 14, 2010 - June 19, 2010

Travel Times

Leave Ft. Worth -	June 14, 2010, 2:20 PM	Arrive Chicago -	June 15, 2010, 1:52 PM
Leave Chicago -	June 16, 2010, 9:00 PM	Arrive NY City -	June 17, 2010, 6:25 PM
Leave New York City -	June 19, 2010, 8:50 AM	Arrive Montreal -	June 19, 2010, 7:10 PM

*** NY to Montreal is strictly Coach since it's a day trip***

Description of Accommodations on Train

Coach - Just seats, Food NOT included but available

Standard Sleeper - Sleeps 2, Food included, Bathroom & Shower in Hall

Deluxe Sleeper - Sleeps 2, Food included, Bathroom & Shower in Room

Coach (Rail Fee) - Everyone pays this but IT IS included in prices listed below

Regular - \$204.80 per person

Seniors - \$174.08 per person

The rates below for Standard & Deluxe rooms are based on 2 people in room

Standard Sleeper - Due to space available, this is 1st come, 1st choice (Only 10 available)

\$450.85 per person, Seniors \$420.13 per person

Deluxe Sleeper - Due to space available, this is 1st come, 1st choice (Only 4 available)

\$787.93 per person, Seniors \$757.21 per person

Deluxe Sleeper - Only to Chicago, it would be Coach or Standard (if available) to N.Y.

Deluxe/Standard - \$657.80 per person, Seniors \$627.08 per person

Deluxe/Coach - \$473.30 per person, Seniors \$442.58 per person

This is due to there only being 4 available from Chicago to NY but 5 available from Ft. Worth to Chicago

Be sure you have a Passport & Birth Certificate available upon request.

Hotel in Chicago will be the Hilton (Monroe Street) - 6 blocks from station

\$275.00 (includes taxes)

Hotel in Chicago will be the Hilton Garden Inn (Times Square) - 2 nights

King - \$243.33 (includes taxes) x 2 = \$486.66

2 Queen - \$277.76 (Includes taxes) x 2 = \$555.52

Transfer to/from hotel/station - \$40 per person (round trip)

Travel Agent Fee - \$50 per person

Low end Cost - \$675.63 per person (this is with sharing a room in Chicago & NY) = \$1351.26 + Meals

High end Cost - \$1,293.19 per person (this is with sharing a room on train & in Chicago/NY) = \$2586.38

Final payment due by April 23rd

Due to limited availability for some rooms, please don't wait to let us know if you're interested

Troy Secord - 940-767-7478 (w), 940-569-2312 (H), or tsecord@secordlebow.com



WORLD POLIO DAY DINNER— ABILENE—OCTOBER 22TH

Over 350 Rotarians and Spouses came together for a Special Dinner with Incoming Rotary International President Ray Klinginsmith at Abilene Christian University. The 7 local Abilene Rotary Clubs raised over \$50,000 in support of the End Polio Grant Match Campaign. The entire cost of the dinner was underwritten, allowing attendees \$50 contribution to go totally towards Polio eradication.

The evening included entertainment and Paul Harris Awards.

Members travelled from the D/FW area as well as Wichita Falls along with other clubs in the District.





PHOTOS FROM AROUND DISTRICT 5790

Arlington Sunrise—NEW MEMBERS
FOR OCTOBER



The diversity of the Arlington Sunrise Club has been enhanced with the addition of new members Sushil Gautam and Steevy Cocauthrey, shown pictured here with President Danny Steffer. Sushil is originally from Nepal and Steevy from Ivory Coast. Both new Rotarians are members of the Arlington business community and joined Rotary to give "service above self."

LEWISVILLE MORNING—HELPING
TO GET RID OF HAZARDOUS
WASTE



One of Lewisville Morning Rotary's projects is the monthly duty to get rid of Household Hazardous Waste. Attached is a picture of our group for October.

ARLINGTON SOUTH—MEDIAN
CLEAN UP



The Arlington South Rotary Club and over 60 Seguin students and club sponsors participated in the Rotary Club Park Clean Up. The students did a great job and worked hard. The City of Arlington was impressed with all the hard work and what the students were able to accomplish. We cleaned up and weeded an area on Center Street near I-30. After a lot of hard work by everyone the Rotarians cooked lunch for all the students.

Have something to let the Rotarians of District 5790 know about? Please submit your pictures and articles to the District 5790 Newsletter Editor. E-mail them to chuck@signsnowarlington.com

Pictures do not need to be high resolution. Please attach them to your e-mail — and don't embed them.



PHOTOS FROM AROUND THE DISTRICT, Con't

ARLINGTON ROTARY CLUBS HELP
WITH BLOOD DONATIONS



Various members of 3 of the Arlington Clubs participated in a Blood Drive to participate in World Polio Day.

Pictured left is Arlington Club President, Jim Fulgham and to the right is Carolyn Murphy, President of Arlington Sunset Club.

Below are Carolyn Murphy, President of the Sunset Club. and Steve Dixon with the Sunrise club



ABILENE SOUTHWEST ROTARY CLUB ROTARIANS AND ROTARY EXCHANGE STUDENTS WALKED AT RED BUD PARK IN ABILENE ON OCTOBER 24TH



They joined in with the other 33,000+ Rotary clubs, walking around the world to create awareness that the scourge of Polio is still a dreaded disease, which needs to be eliminated from the earth. The three Rotary Clubs of Abilene, and the surrounding area clubs, held a World Polio Day Fund Raising Dinner on October 22, at the Hunter Welcome Center of Abilene Christian University, to raise funds to assist Rotary International and the Rotary Foundation's effort to End Polio Now! The featured speaker for the event was Rotary International's President-Elect Ray Klinginsmith, who told us that there are only four countries left in the world where Polio is a threat and immunizations are needed; Pakistan, Afghanistan, India and Nigeria.

Pictured: Front (reclining) Alina Toktomamatova of Kyrkyzstan; Second Row (L-R) PDG Dave Mason, Coline Briatte of France, Rosa Buigues of Spain, Biatrice Keiler of Brazil and Will Speight; Third Row (L-R) Downing Bolls, Lexi Everett, Anna Hilscher of Germany, Club President Stephanie Kraly and Vonda Mason; Back Row (L-R) PDG Jim Aneff, Terry Kraly and Justin Schwertner.



UPCOMING CLUB EVENTS

GREAT SOUTHWEST VETERAN'S DAY - COMMEMORATION CEREMONY

Great Southwest Rotary is hosting a Commemoration Ceremony at Veteran's Park in Arlington.

The program begins at 11 am, and includes a speaker, Colonel Mark Toal, USMC, along with recognition of Purple Heart Recipients. Remarks will be made by Arlington Mayor Robert Cluck. Music will be by the Cowtown Music Club.

The Veterans Park Memorial is a service project of Great Southwest Rotary.

Please join your fellow Rotarians in honoring those who have served our country.

ARLINGTON WEST GOLF TOURNAMENT NOVEMBER 16TH

Arlington West Rotary's golf tournament has been rescheduled for November 16th due to rain. It will be held at Shady Valley Golf Club in Arlington. Sign-up and registration starts at 11:30, The tournament begins at 12:30 with a shot gun start. \$125 per entrant. Prizes for the top 3 low scoring foursomes, closest-to-the-pin, long drive, a putting contests and a drawing for door prizes. Mul-ligan's may be purchased, limited to 5 per golfer.

Includes box lunch with a BBQ dinner by Spring Creek BBQ. Chair person for the tournament is Pete Pietrowski. His e-mail address is petepio@tx.rr.com. Pete can furnish any information for golfers or sponsors who want to participate in our project.

LET US KNOW WHAT IS GOING ON WITH YOUR CLUB!

Send us articles, photos, anything that shows the great things your club is doing.

If you have a fundraiser that you feel other clubs would have interest in, please feel free to share them with us. We will do our best to include them into the newsletter on a timely basis.

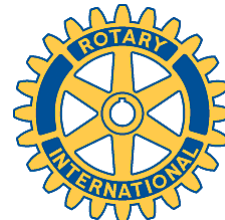
Please send any article you write in an editable format—Microsoft word, etc. Feel free to send pictures—they do not have to be high resolution. PDF Files are acceptable, but the editor reserves the right to re-format to fit the newsletter.

E-mail these to chuck@signsnowarlington.com



Rotary District 5790 Newsletter

Page 20



ROTARY CLUBS IN THE NEWS



Has your club had recent press coverage? Let us know.

E-mail Sarah Maben at

mabens@charter.net

Here is the Publicity that Clubs in District 5790 have had this past month.. Click on the link below to see the article.

The Mineral Wells Index ran a story on Oct. 19 about eradicating polio and World Polio Day.

http://www.mineralwellsindex.com/archivesearch/local_story_292095532.html

The Cleburne Times Review published an article Oct. 8 promoting the club's polio walk.

http://www.cleburnetimesreview.com/archivesearch/local_story_281124044.html

The Hood County News (Granbury) ran an article about polio and Rotary's efforts on Oct. 14.

www.hcnews.com

The Weatherford club landed a front page story about a polio survivor and Rotary on Oct. 21.

<http://www.weatherfordtelegram.net/news/story/6041.html>

CLUB MEETING CHANGES...

MID CITIES PACE SETTERS

Texas Star Golf Course and Conference Center
Raven's Grill
1400 Texas Star Parkway
Euless, TX 76040

Meeting time is now at 7 am on Friday Mornings.

KENNEDALE ROTARY CLUB

Tierra Verde Golf Course
Ventana Grille
7005 Golf Club Drive
Arlington, TX 76001-2815

Meeting time is Noon on Tuesdays.

If your club changes times or meeting locations, please let the district membership know.

Please send these changes to Richard Sherman, District Secretary: rsherman5790@sbcglobal.net

District Webmaster, Don Proctor: Don@donproctor.com

And Newsletter Editor, Chuck Chambers: chuck@signsnowarlington.com



ROTARY5790.ORG

The District 5790 Newsletter is edited monthly by Chuck Chambers, Arlington North Rotary.

*Chuck Chambers
900 E. Copeland Rd.,
Suite 130
Arlington, TX 76011*

*817-265-7446 (Office)
817-721-0546 (Cell)*

chuck@signsnowarlington.com

To submit articles please send them to the editor at the e-mail address above. Submissions are requested by the 20th of the month. Please send them in an editable format. Please include pictures!

Comments and suggestions welcome.



Rotary District 5790 Newsletter

Page 21



CONCERT TO END POLIO

Violin Virtuoso Itzhak Perlman will play a benefit concert with the New York Philharmonic on Wednesday, December 2nd at 7:30 pm. The concert will be held in Avery Fisher Hall, Lincoln Center for the Performing Arts in New York City.

A block of tickets has been reserved for Rotarians until November 1. To order tickets for the concert and post concert reception with Itzhak Perlman, call the Philharmonic Box Office at 212-875-5656 and mention that you are Rotarian.

All proceeds will go to Rotary's \$200 Million Challenge.

More information is available at www.rotary.org/endpolioconcert

Watch for an interview with Itzhak Perlman in the November issue of *The Rotarian*.

Itzhak Perlman was stricken with Polio at the age of four, and overcame great physical challenges to become one of the world's most celebrated musicians.

Southwest Airlines flies into LaGuardia, as does American Airlines. Book early to get the best price.

Manhattan hotels can be expensive, but hotels in New Jersey are much more reasonable.

COMING IN THE NEWSLETTER IN DECEMBER

December is "Family Month" for Rotary.

You'll find articles about District Simplified Grants, Matching Grants, the District Conference, Wheel-chairs and the International Convention.

Arlington Sunrise, Bowie, Colleyville, Denton South and Sanger will let us know what is going on with their clubs.

You will also find recaps of what has gone on in the district, and upcoming club events.