

District 6630

ROTARY INTERNATIONAL

Short Term Exchange Program (STEP) SUMMER FAMILY-TO-FAMILY EXCHANGE 2020

What is STEP?

The Short Term Exchange Program (STEP) is a summer exchange between families. Your Outbound student lives with a foreign (Inbound) student's family for approximately one month and then both students return to USA or Canada where the Inbound student lives with your family for another month. STEP allows students to experience another culture, country, and language. It offers a fun learning opportunity while building lifelong friendships and broadening their horizons by increasing awareness, knowledge, and confidence.

Rotary International has sponsored youth foreign exchange programs for more than 50 years with the goal of building international goodwill and understanding. Exchanges generally occur from June through August. Some southern hemisphere countries have split-season exchanges with American students traveling in July-August and your foreign brother/sister visiting in December-February.

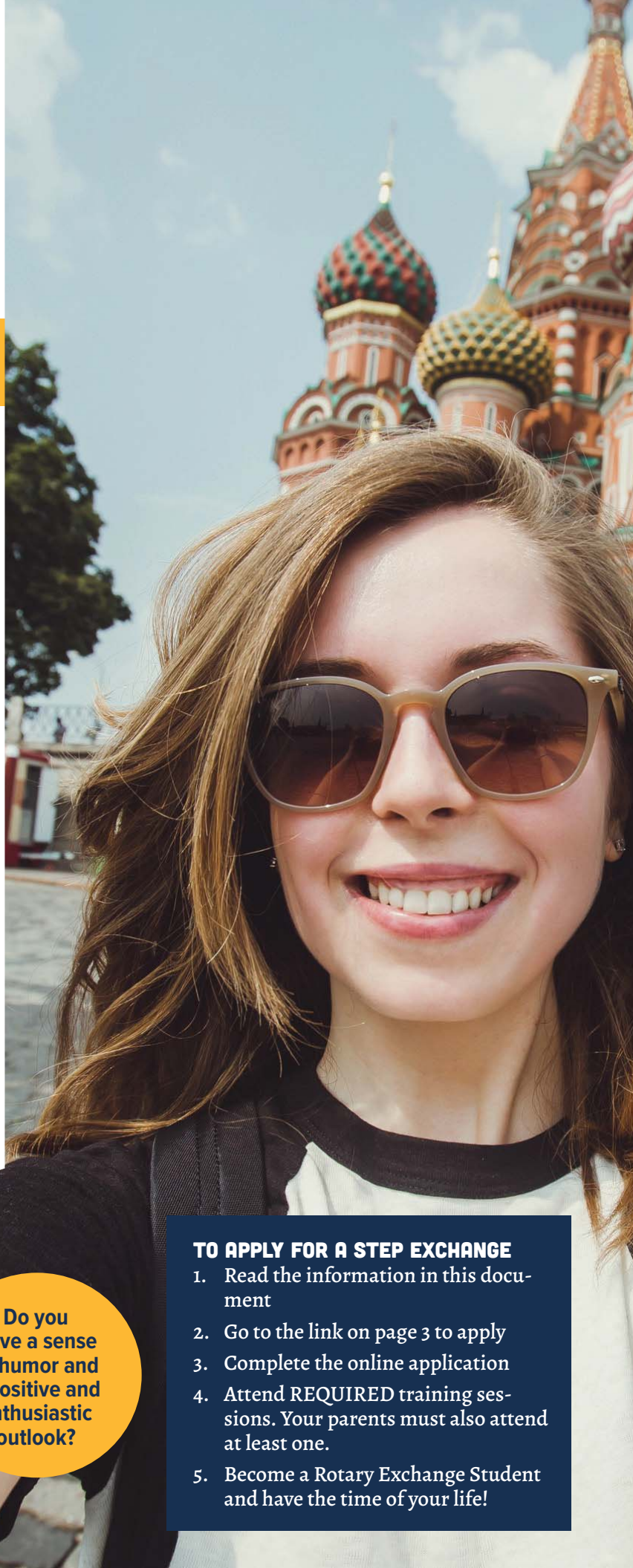
Would you be comfortable traveling away from home for 4 weeks or more?

Do you make friends easily with both adults and people your age?

Do you have a sense of humor and a positive and enthusiastic outlook?

TO APPLY FOR A STEP EXCHANGE

1. Read the information in this document
2. Go to the link on page 3 to apply
3. Complete the online application
4. Attend REQUIRED training sessions. Your parents must also attend at least one.
5. Become a Rotary Exchange Student and have the time of your life!



Requirements and Process:

Students are interviewed by their local Rotary Club/District and participate in district-wide orientations and training. Your family becomes a Host Family while your match is in the United States.

1. For Ages 15-18 years.
2. You and your parents agree to host a student for approximately four weeks during the summer (or December-February if going to southern hemisphere country). Your family is expected to arrange activities for the visiting student. Hosting costs are your responsibility.
3. Apply online (add link) with application fee of \$450.00. Make checks payable to Rotary District 6630. Be thorough, as your potential matches will see most of this information and use it to decide if you are a good match for them. Contact your District Rotary STEP Chairperson with questions.
4. Students and parents participate in interview with District Rotary club representative. Background checks are conducted on all household members age 18 and over.

After acceptance into the program, the match process begins. It may take a few months. Matches are made between February and May in the year of travel.

5. Student and parent must attend at least one orientation meeting.
6. Obtain passport
7. Make travel arrangements for your Outbound Student. We recommend the O-E appointed travel agency, Its Your World Travel - (206) 242-1969, <http://www.iywt.com/>. Rotary can assist, but cannot be responsible for any travel problems. Submit your travel itinerary to your Rotary representative.
8. Sign up for travel/medical insurance through Rotary: <https://secure.visit-aci.com/insurance/oerye/>



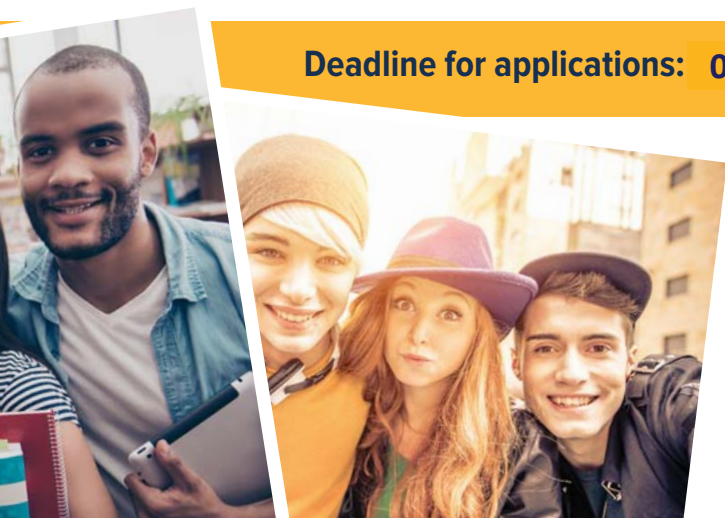
ePosts (Some local rotary clubs may offer financial assistance)

- ☐ **Application Fee - \$450.00**
- ☐ **Cost of obtaining a passport (see local post office). Passport must be valid for at least 6 months after your return home.**
- ☐ **Rotary travel/medical insurance. Cost is less than \$5 per day.**
- ☐ **Round trip airfare**
- ☐ **Spending money**
- ☐ **Hosting costs for when match is with your family for 4 weeks**

Rules and Considerations

1. Students need to accept the advice and supervision of the Rotary club counselor and of your host parents abroad.
2. Students must accept cultural differences in your host country without vocal criticism.
3. Students are not permitted to operate a motor vehicle or motorized boat while in another country.
4. Students may not drink alcohol during the exchange. In many host homes, wine and light beers are served with meals. This is permissible provided your parents approve.
5. The use of illegal drugs, including “pot” is strictly prohibited. Use of prescription medications not prescribed to the student is cause to terminate the exchange as well.
6. Host families should take your foreign exchange brother or sister to a Rotary meeting shortly after they arrive. Students should ask to be taken to a Rotary meeting while being hosted abroad.
7. Independent travel by students is not permitted while abroad. Students may travel with the host family with Rotary’s prior approval.
8. Host families should arrange for day-time and evening activities for your exchange brother or sister. Inactivity can lead to boredom and homesickness.
9. Host students may not take a summer job or participate in school activities that interfere with hosting responsibilities.

Deadline for applications: 02/01/2020 APPLY HERE: <https://yehub.net/OER-stapp>



Rotary



**rotary
youth
exchange**



**Short Term Exchange Program (STEP)
SUMMER FAMILY-TO-FAMILY EXCHANGE 2020**



Are you a good candidate for the STEP Program? Ask yourself these questions and if they are Yes, you have a good chance of having a successful exchange.

- ☐ **Do you have an interest in things international, through language classes, social media, friends abroad cultural studies, foreign travel, and/or hosting inbound students?**
- ☐ **Do your parents support your decision to participate in an exchange?**
- ☐ **Are you polite, pleasant and confident?**
- ☐ **Are you flexible to adapt to new and changing environments?**
- ☐ **Are you able to participate in some monthly Rotary meetings held for exchange students? (usually on Saturdays)**
- ☐ **Do you have an overall grade point average of 3.0 or above? This is not mandatory, but a good sign of dedication and discipline.**
- ☐ **Do you have the ability to make presentations to sponsoring Rotary Clubs here and abroad?**
- ☐ **Can you make a firm commitment to the STEP program with minimal time and work conflicts? (Your schedule should not interfere with hosting your brother or sister from another country.)**

Rotary



**rotary
youth
exchange**



APPLY ONLINE TODAY!

<https://yehub.net/OER-stapp>

Questions - Contact your District STEP Chair:

Robert Huge, 15690 S. Boone Road
Columbia Station, OH 44028
Phone-440-236-9055
robertcolehuge@gmail.com

Or Contact the O-E Multi-District STEP Chair:

John Koetz, 29 Frederick Street
Columbus, OH 43206
614-519-1836 John@wedavis.com