

# TTL: THROUGH THE LENS

Vol 1 Issue 2

Oct 2012 © Eric Wethington

## Special points of interest:

- Photographic word of the month
- Product spotlight
- Monthly project

## Inside this issue:

Aperture 2  
Wide open

Aperture 2  
Closed down

Photographic Product: 3  
Camera Bags

Monthly Project 3  
Blast of Color

NE Ohio Camera Club Listing 4

## Volume 2 is Here!

Hi! This is Eric Wethington again... Hopefully you found the first newsletter on photography educational and informational

I have been busy this past month using my camera... have you? I have had fun shooting in the studio with some fun models doing strange themed photo shoots with people dressed as barbarians, pixies, and vampires. I have also gone out to Whipps Ledges near Hinckley and got some wonderful portraits out there.

As posted last issue, I have 2 images in the Cuyahoga Community College Literary Journal "Breakwall" (Spring 2012). Which the opening of the show is on Wed Oct 17th at Tri-C Metro Campus from 4-6pm.

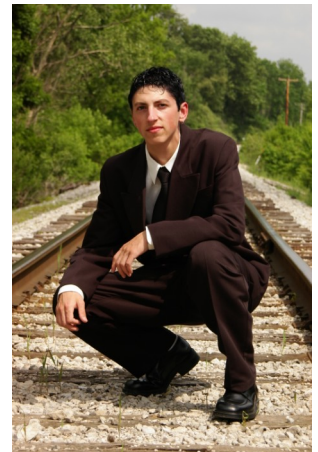
I am currently taking 3 classes at Tri-C towards my degree including Editorial Photography. An interesting class on how to take portraits of people in their work environment. Hope you enjoy this months newsletter and try out the photo assignment!



Model: Erin at Whipps Ledges

You can see more of my work at  
[www.facebook.com/wethington.photography](http://www.facebook.com/wethington.photography).

Email at either  
[eric@doddcamera.com](mailto:eric@doddcamera.com) or  
[PenK20d@gmail.com](mailto:PenK20d@gmail.com)



Model:  
Ben on the RR tracks

## Camera/Photographic Clubs

At the end of this edition of TTL: Through the Lens is a listing a a majority of camera clubs in the NE Ohio area. I think I have them all, but I may have missed one or two.

If you get serious in to photography or at least want to know more then just snap shooting, Look into attending one of their

meetings. Some are more geared towards landscape images while others are large enough to hold any ones attention no matter what they shoot.

I have been a member of Medina County Photographers of the Park and am a current member of the Cleveland Photographic Society.

I have done several presentations for a few other of the clubs in regards to camera gear. I hope you can find one near you

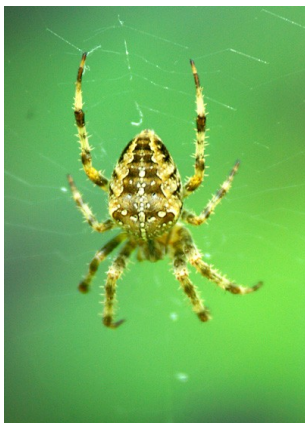
Hope you enjoy the new images in this news letter.

Eric Wethington.



A flower with a shallow depth of field (wide open aperture) stands out from its background

Shallow depth  
or deep depth?  
Take the same  
picture of a  
subject and see  
what you like!



A VERY shallow depth of field (f2.8) on a macro shot helps create drama for this spider shot.

## The Word is: Aperture (Wide open)

Photographic Word of the Month - APERTURE

Aperture (aka f-stop, f-number, Av) basically is how open the lens iris is. If you take your lens off your camera and look through it, you will see all the way through the lens. Some lenses will show you a big hole and some have a small hole. Some lenses (Pentax, Nikon, Sony) have a little arm on the back of the lens you can move to open or close the iris to see how it works. Canon lenses are done electronically.

The Aperture is rated in numbers and the smaller the number, the larger the hole is through the lens. Now what does that do? It lets in more light. The more light coming in the lens the faster your SHUTTER SPEED (remember this from last month?) can get.

How does that affect your image? Well, a smaller f-number (like 1.4, 1.8, 2.8 and 4) created a shallow depth of field (A what???). Ok, take a picture of someone outside your house with a tree about 20 feet behind them. Pick a wide open aper-

ture (Low number) and shoot. As you can see the tree is pretty blurry if you focused on the person. It causes a separation between your subject and its surroundings allowing them to stand out.

It's a nice way to shoot flowers, butterflies, or any other type of image where you want something to stand out from the background.

## The word is: Aperture (closed down)

Now let's "stop it down" or use a high f-number (like 11, 16, 22). Because the larger number is a smaller hole through the lens it is best to make sure you have plenty of light or have a sturdy tripod (Remember that from last issue?). As you use a larger number 2 major things happen. The first thing is your SHUTTER SPEED slows down (less light coming in the lens, it takes longer for things to happen!). The second thing is your focus now includes a lot

of the background. This is extremely useful for getting large groups or large areas of interest. An example is one of our families "Tent Cities".

Coming from a large family with lots of cousins, whenever we had a family gathering during the summer a lot of use would pitch tents in the front/back lawn to ease the traffic inside the

house. I wanted to show all the tents in a large area and wanted them all in focus.



## The word is: Aperture (final notes)

It's fun to play with the aperture especially to draw out drama in a scene. Low f-numbers create separation between subject and background (Like the creepy spider to the left!) but also adds drama to a landscape shot (My daughter Allie on a frozen Lake Erie shoreline). The control is up to you but remember that SHUTTER SPEED and APERTURE work close together to achieve the shot you see in your head.

Some lenses can't go down to small of an f-number, and that's OK. For example most 18-55 kit lenses are f4-5.6 which means at the 18mm it can open up to f4, but at 55mm it can only open up to f5.6. The lens needs a little more light (or time) to get the shot at the longer range of the zoom. You can stop it down to f11,

16, or 22 from there. Be aware of what it does to your picture when you change the aperture.



## Photographic product of the month – CAMERA BAG(s)

Photographic Product of the month - CAMERA BAG(s)

Camera bag (or bags) - the bag that carries your equipment from place to place or the bag where you store your equipment between shoots.

Most people think “Oh, camera bag.... I have a camera and one lens. I’ll just get a small bag to fit those”. Which can work... for awhile! If you never, ever plan on getting another piece of equipment then the small bag idea works (works great with the pocket cameras!) But with an DSLR, or mirrorless type cameras it may not be the best

solution. What happens when you get a small flash for your birthday, or the zoom lens for the holidays? Your small bag no longer fits and now your out looking at bags again.

There is now perfect bag, just the perfect bag for the moment. I have gone from a very large Domke J1 bag to a small Tamrac satchel type bag, because my gear changes (switched from Nikon 35mm film system to a Pentax DSLR). My gear was about 30% smaller so my big bag was now WAY too big. A nice way to pick out a bag is

to think 2-3 years down the road and ask yourself “Am I gonna get a flash? Or a Macro lens, maybe some special effects filters?” If the answer is even maybe, then get a bag that is slightly larger then what your current gear is (maybe have 1-2 empty areas to grow into.

Some good bags to look at would be by Tamrac, Think Tank, Lowepro, Domke, Click, or Promaster. There are lots of bag companies out there but these are some of the ones I have used in the past or are currently using.



Another example of a large aperture (f11).

## Shallow or Deep? Do I want the background? Its your choice!



Questions?

Comments?

Email me at

[Eric@doddcamera.com](mailto:Eric@doddcamera.com)

Or

[Penk20d@gmail.com](mailto:Penk20d@gmail.com)

## Monthly project: “Blast of Color”

Monthly project - "Blast of color"

Color is moody, exciting, and dangerous. Color draws emotions and expects some response.

Find an image where a single color is dominant. How do you feel when you see the shot? We see lots of colors around us during the day and night... find something that is a single color and shoot it so that the color is the domi-

nate this in the image not the subject that you shot.

Maybe the red stop sign? Shoot it to fill the shot...

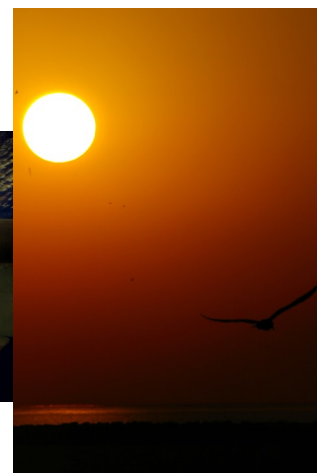
The green leaves on the tree?

The purple grapes, or the red strawberries?

The deep blue sky (Ok maybe a few clouds can be in there...)



The Blue of the water ads mood and a sense of unaware danger. Taken at Greater Cleveland Aquarium.



Lake gull on Lake Erie. A blast of Orange color

# TTL: Through the Lens

List of NE Ohio photo clubs... why not join one in your area?

## ***Akron Camera Club***

Cuyahoga Valley Art Center

2131 Front Street

Cuyahoga Falls, OH

330-929-0618

<http://www.acorn.net/acc/info.html>

## ***Apple Computer Camera Club - NEOAC***

Gypsy Beans

6425 Detroit Avenue

Cleveland, OH

## ***Chagrin Valley Camera Club***

Beachwood Library

25501 Shaker Boulevard

Beachwood, Ohio 44122-2398

<http://chagrinvalleycameraclub.com/about.htm>

## ***Cleveland Botanical Gardens***

Photographic Club

11030 East Boulevard

Cleveland, OH - 44106

216-271-1600

## ***Cleveland Metroparks Southwest Camera Club***

Rocky River Nature Center

24000 Valley Parkway

Rocky River Reservation

North Olmsted, OH - 44070

440-734-6660

<http://southwestcameraclub.blogspot.com/>

## ***Cleveland Photographic Society***

9543 Broadview Road

Broadview Heights, OH 44147-2300

(440) 838-4510

[www.clevelandphoto.org](http://www.clevelandphoto.org)

## ***Cuyahoga Valley Metro Park Summit County***

Metro Parks Photo Club

Meet at Happy Days Center

15610 Vaughn Road

Brecksville, OH - 44141

800-445-9667

<http://www.dayinthevalley.com/>

## ***Lakewood Photographic Society***

Senior Center

16024 Madison Avenue

Lakewood, OH - 44107

216-521-1288

<http://www.lakewoodphotographicsociety.org/>

## ***Medina County Photo Club***

## ***Photographers of the Parks***

Wolf Creek Environmental Center

Sharon Center, OH

330-239-4814

[www.medinacountyparks.com](http://www.medinacountyparks.com)

## ***North Chagrin Metro Park***

## ***Photography Club East***

North Chagrin Nature

Sunset Lane

Mayfield Village OH 44124

440-473-3370

## ***Senior Camera Club***

Middleburg Heights Community Church

Middleburg Heights

## ***Nature Center Photographic Club***

Shaker Heights Nature Center

2600 South Park Boulevard

Shaker Heights, OH - 44120

216-321-5935

## ***Sketch Crawl and Photography***

1st Saturday of month at 10:00 AM - various sites

Noreen Molek - Co-ordinator

[noreenmolek@gmail.com](mailto:noreenmolek@gmail.com)

## ***Western Reserve Photographic Society***

Penitentiary Glen Nature Center

Kirtland, OH

8800 Euclid - Chardon Road <http://www.wrpsphoto.org>

## ***Wooster Camera Club***

<https://sites.google.com/a/woostercameraclub.com/www/>



Key Bank building at sunset. Taken from Terminal Tower