



# Rotary International Zones 24-32

*Beyond Borders*



• Bermuda • Canada • France • Russia • United States



## Bryn Styles

RI Director 2012—2014  
Rotary Club of  
Barrie-Huron, Ontario  
Bryn.styles@gmail.com

**Zone 24:** Canada, Alaska,  
Russia (east of the Urals),  
St. Pierre and Miquelon

**Zone 32:** Bermuda,  
Northeastern United States

Julia Phelps, Director-elect  
jphelps7930@comcast.net

[www.rotaryzones24-32.org](http://www.rotaryzones24-32.org)

Facebook: Rotary Zones 24 and 32

Blog: <http://greatideastoshare.com>



November  
2013

## *A Message from our Director ...*

Within the Rotary calendar, November is Foundation month. It is a time for us to focus on our Foundation and its programs. This year has seen a major change to our Foundation as we move to incorporate the new model for grants and programs (I refuse to call it Future Vision Plan anymore!). The success of the new model is dependent on all of us to make it work. Districts and clubs now have more funds available to use locally and the projects we do internationally should be larger and more sustainable. As with anything new, there will be growing pains. I urge all of you to become advocates for the new plan and to work through the new processes.

Because of our Foundation and its programs, Rotary is now recognized as a world leader in the humanitarian field. But to carry on the work that the Foundation does, we need your support. There are so many ways to support our Foundation financially – Annual Fund, PolioPlus, Endowment Fund. We can give through automatic payments, insurance policies, stocks, bonds and any other creative way. I would urge all of you to Lead By Example and become regular contributors to our Foundation and then share your decision with others.

I am currently in Evanston where in the last week we have had three separate Arch Klumph Society Days – one for donors in the US, one for Taiwan and one for Nigeria. In total over 15 Rotarians have become members of the Arch Klumph Society. Not all of us have the resources to become members of the AKS but we can all support our Foundation to some extent.

I have had the pleasure of chairing the Service Above Self Award committee and reading over 400 nominations for Rotary's highest honor. When you read about the work that these Rotarians are doing and how they are using our Foundation to make the world a better place, it is inspiring. I thank each and every one of YOU for all of the work you are doing through Rotary to make the world a better place. You do make a difference to someone's life. THANK YOU!

*Bryn*

## *In this issue ...*



**Page 2:** How to create a satellite club  
**Page 3:** A seminar — with a youthful twist  
**Page 4:** Update on Irene recovery grant  
**Page 5:** Some needs don't go away  
**Page 6:** Paul Harris' Little Red Schoolhouse  
**Page 7:** Zone Institute 2014 in Toronto  
**Page 8:** Rotarians remembered

## What Exactly Is A Satellite Club?



Rotary describes a satellite club as *an alternate meeting time and place of the host club. The satellite club is not an official independent Rotary club. It gives the opportunity for a club to conduct multiple club meetings during a week, each taking place at a different location, on a different day, and/or at a different time.* Satellite clubs can be created for a number of purposes, including:

- ◆ To support chartering of a new club
- ◆ To accommodate small populations in a rural area or community
- ◆ To offer flexibility in a large metropolitan region by allowing a club to provide several meeting times and locations
- ◆ To provide an opportunity for small, weak and struggling clubs to become connected to larger, active and vibrant clubs for ongoing mentoring, support and assistance
- ◆ To address the needs of different demographic groups such as young people where the established Rotary club doesn't fit their requirements or isn't attractive to them for various reasons

There is tremendous flexibility to develop a satellite club to address specific community or club needs. Guidelines for satellite clubs from the 2013 COL decision can be found in the updated standard club constitution <http://www.rotary.org/myrotary/en/document/632>.

Ideally, a satellite would become a full-fledged Rotary club at some point in the future; as with all new clubs, that is based on feasibility of location and other community factors.

## Membership Matters



### How Do We Create a Satellite Club?

By Gayle Knepper

The potential of satellite clubs intrigued many Rotarians as soon as the concept was announced by Rotary in the membership pilot program about two years ago. Thinking about the feedback from numerous Rotary surveys and focus groups that repeatedly showed prospective members and younger Rotarians need flexibility in their membership, those resourceful minds had questions such as, *How can I make this work for my district or club? Can I use it to attract those individuals in my community who would be ideal Rotary members, but don't fit into an existing club? How can we adapt this idea as a way to involve younger members?*

The practical minds also asked these important questions: *How many members does a satellite club need? Is it part of the host club or a stand-alone? If part of the host, does it become a "real" club at some time? What dues are paid by members? And, Does my club need to be part of the pilot to start a satellite club?*



There is great news about satellite clubs. In addition to being a highly flexible, adaptable way to attract and retain members and launch potential new clubs, satellites were approved by the 2013 Council on Legislation (COL) so that all clubs in the Rotary world can now start satellites. The specific responses to many other questions about satellites can best be answered by looking at the individual situation and deciding what best fits the needs.

There are a number of resources to help your district or club launch a satellite. As this is a new structure for Rotary, you may find that some of the most useful information is learning what other districts and

clubs have already put into place. A conversation with the Rotary Coordinator in your region about the specific needs in your area will provide options for structure and real-life examples of what has worked well for others. In addition, resources and examples for satellite clubs have been collected and added to the Zones 24/32 blog site <http://greatideastoshare.com/membership/>

There is also a new Rotary discussion group recently formed for satellite clubs: <https://www.rotary.org/myrotary/en/exchange-ideas/groups/satellite-clubs>

A satellite club is an outstanding way to increase the vibrancy and the vitality of a Rotary club. It can attract a diverse group of new members and retains valued long-time members by providing additional flexibility to their Rotary membership. Discuss this opportunity with the clubs in your district and make a call to your Rotary Coordinator for ideas.

## First E-Alumni Association Chartered

The Rotary Alumni Association of Greater New England (RAAGNE) builds on 15 years of Rotary scholar and GSE Team orientations that have taken place in the Boston area at Northeast LINK. Our Districts rapidly lose contact with people who have benefited from Rotary scholarships and grants. RAAGNE addresses this issue by operating in a similar fashion as a Rotary e-club, almost exclusively via Internet.

The association was chartered in August and celebrated in September with Trustee Mike McGovern officiating at the Northeast LINK dinner in Boxborough, MA (see photo).

The purpose of RAAGNE is to re-engage Rotary Foundation alumni with Rotary projects, taking as an example a Matching Grant to supply surgical instruments to a hospital in Kosovo, which could not have been successful without two Ambassadorial Scholar alumni playing major roles, nor the participation of seven Rotary clubs in four countries.

Conversely, members may create their own humanitarian projects, and then look for support from Rotary and elsewhere.

A secondary goal is to assist members as they develop their careers, by networking.

Full membership is available to Rotary Peace Fellows, Ambassadorial Scholars, Global and District Grant Scholars, GSE/VT team leaders and members, current and past leaders of Matching Grants, and Rotary Youth Exchange participants. Supporting membership is offered to Rotarians and Rotaracters.

RAAGNE is led by President Christopher Uschnig ([christopher\\_uschnig@hms.harvard.edu](mailto:christopher_uschnig@hms.harvard.edu)) from Austria and supported by Klaus Hachfeld ([klausdh@charter.net](mailto:klausdh@charter.net)) of District 7910.

More information is available online: [www.raagne.byethost10.com](http://www.raagne.byethost10.com). RAAGNE is also on Facebook: [www.facebook.com/groups/rotary.newengland](http://www.facebook.com/groups/rotary.newengland) and on LinkedIn.

## Membership Matters



### A Success Seminar — With a Youthful Twist

By Alan Hurst

In September, Zone 32 held a Success Seminar with a twist. The twist was a panel of four 20-something Rotary program alums who talked about roadblocks to joining Rotary. To provide some context, the four panelists had Rotary resumes which included: a current and a past Rotaract President, a RYLarian, two Advanced RYLarians (19 to 29-year-old version) and two former exchange students, one from Italy and one to Chile.

Some of the comments they made we have heard before and some were revelations. Carrie Erhard, a 2003-04 Rotary exchange student to Chile, commented that she had been embraced by the family of Rotary, had been asked to be a ROTEX and help with exchange orientations, but despite a number of years in the teaching profession and being well grounded had never been asked to a Rotary meeting.

Beth Richards, a 21-year-old member of a Rotary e-club, let us know that we need to engage and empower younger members. They not only want to participate in Rotary projects, but they want to lead them.

Kristina Kiraly, Quinnipiac University Rotaract president, followed that up by pointing out that there are leadership commonalities between Rotary, Rotaract and other Rotary programs. We have

equipped this generations with skills to lead, now we need to let them do just that. Don't assume young people just want to be another committee member, she advised.

Enrico Ferro, a former exchange student from Italy to upstate New York and a past President of Yale Rotaract, opened our eyes when he discussed how some Rotarians provide passive invitations to events while others provide active invitations. Close your eyes and think about that one for a minute. It's much like the comment we have all heard before at our meetings: *If you are interested in participating see me (put your name on the sign-up sheet) after the meeting* — just how inviting is that?.

We discovered that the younger generation is more interested in service while many of us older, check that, more experienced Rotarians enjoy the fellowship of Rotary. I think members of the newer generations achieve their fellowship through service.

Enrico also commented that sometimes when he attends a meeting he is afraid to start a conversation because he doesn't know what to talk about. Director-elect Julia Phelps piped up that sometimes more experienced Rotarians are afraid to start a conversation for the same reason.

The final comment was precious. I was getting ready to bring senior leadership to the front of the room for Q & A when Beth commented that she had been very fortunate to attend a number of District events (Conferences, Assemblies, etc.) and she wondered why it was always the same people up front. Good point, Beth. If we want to engage more Rotarians let's give some newer members opportunities up front, just like this panel!





## How a Matching Grant Came to Vermont

Within a month of the storm, Governors Marilyn Bedell (District 7850, Northern Vermont, Northern New Hampshire and several of the Eastern Townships in Quebec) and Jan McElroy (District 7870, Southern Vermont and South New Hampshire) partnered to apply for a Rotary Foundation Matching Grant.

The Rotary Club of Sherbrooke in Quebec, which is in District 7850, agreed to serve as the International Partner for the grant.

Funds for the Matching Grant were solicited from all the districts in Zones 24 and 32 and other districts that had personal or Group Study



Exchange connections with Vermont. Thirteen districts pledged District Designated Funds (DDF) – nine from the USA; one from Taiwan; two from Canada (7820 and 5060); and one from South Africa. We received additional pledges from 115 clubs – 109 from the USA; five clubs from Canada; and the Ludlow Club in England.

This generous outpouring of support and partnership allowed us to raise a total of \$238,384 in pledges that The Rotary Foundation matched with \$174,066, which gave us a total of \$412,450. The check arrived close to the first anniversary of the storm in August 2012. At this point we started a variety of projects as outlined in the grant application.

## Foundation Facts



## Update: Tropical Storm Irene Recovery Grant

By Marilyn Bedell and Jan McElroy

It's hard to believe, but we are now two years out from the destruction caused by flooding from Tropical Storm Irene in Vermont,. As many of you will remember, this storm came rolling in to New England during the Zone 24/32 Institute in Boston on August 29, 2011.

We are sure our fellow Rotarians who experienced flooding in the vicinity of Calgary and those in New York and New Jersey who were in the path of Hurricane Sandy are learning, as we did, that storm recovery is a slow, tedious process.

In early September, 2013, Marilyn Bedell had the privilege of going out with Photographer Jon Gilbert Fox, a member of the Rotary Club of Hanover, NH, and a case manager, Tyler Maas, to chronicle some of the projects done with funding from our grant. Many of us think of putting water wells and septic systems in third world countries, but on this journey Marilyn and Jon were reminded that finding safe water and providing proper sanitation can be a major problem for citizens here in the United States too. Marilyn is in the process of pulling the pictures from this trip together with stories of recovery, with the hope of submitting a manuscript to *the Rotarian* magazine to help celebrate many positive outcomes from our grant funding.



We successfully completed our second interim report to The Rotary Foundation and received our final payment of \$103,074 from The Rotary Foundation at the end of August. It is our hope that over the next year we will have distributed all the funds to those who still have major needs in Vermont. On our trip, case manager, Maas shared that he just identified an elderly gentleman who does not have potable water at his home since the storm hit. The man was too

proud to come forward to tell anyone he needed a new well. Maas is now working to find a way to get a new well installed on his property with the help of our grant.

In June 2013 we had a second visit from a representative of the Foundation. The Cadre member spent three days with us visiting some of the damaged sites and learning from flood victims how they benefited from the Rotary funding. Since he was especially interested in our administrative relationship with our lead Cooperating Organization, South Eastern Vermont Community Action (SEVCA), he visited with their staff and that of two other Community Action Agencies that are part of their network. This was very helpful for him to better understand why we needed to have some of our funds for screening and case management. He also could examine the very detailed financial management system in place to track all expenditures from the Rotary funds. It was a very helpful visit for us as well, as he provided a number of suggestions that will guide our actions as we distribute the remaining funds.

To those of you in the United States, Canada and beyond in Taiwan, South Africa, and England who so generously supported our effort to launch this "second wave of assistance" to Vermonters, Jan McElroy, Rotarian June Howe of the Rotary Club of Brattleboro, Vermont and Marilyn Bedell say a very big, heartfelt "thank you."

## Rotary Coordinators

Paul Beaulieu, Zone 24 East  
beaulieupaul1@gmail.com

Gayle Knepper, Zone 24 West  
rotary5010@ak.net  
Alan Hurst, Zone 32  
alanhinct@aol.com

## Regional Rotary Foundation Coordinators

Dennis Dinsmore, Zone 24 East  
dennis@dinsmoregroup.com  
Bernie L. Carriere, Zone 24 West  
Bernie.carriere@shaw.ca  
Toni M. McAndrew, Zone 32  
tonim@epix.net

## Rotary Public Image Coordinators

Peggy Hebden, Zone 24 East  
Peggy.hebden@gmail.com  
Penny Offer, Zone 24 West  
pennyoffer@live.ca  
David I. Clifton, Jr, Zone 32  
diclifton@comcast.net

## End Polio Now Coordinators

William Patchett, Zone 24 East  
patch@eagle.ca  
Bruce Christensen, Zone 24 West  
pdg5370@telus.net  
Bernadette Jennings, Zone 32  
bnbjennings@comcast.net

## Zone Webmaster

Hans Granholm  
hgrdane@telusplanet.net

## Zone Newsletter Editor

Marty Peak Helman  
martyrotary@gmail.com

## Zone Directory Editor

B.J. Metz  
bjmetz@metzcompany.com

## Zone Facebook and Blogsite

### Administrator

Kevin Hilgers  
wave@telus.net

## Foundation Facts



## Some Needs Never Go Away

By Michael McGovern

Some needs never go away. Recently I was asked to review a Rotary Foundation major grant for toilet blocks in India. The toilet construction was for several schools that previously had no toilets. The application indicated that young women had to quit school because of the lack of facilities. As they grow into their teens, less modest opportunities are no longer available.



Today, I heard UN Secretary General Ban Ki Moon talk about the problems with sanitation around the world. He said that over 1 billion people do not have even the most basic toilets. His speech was followed by an address by Dr. Margaret Chan, the director general of the World Health Organization, who said that open defecation is one of the major causes of preventable diseases around the world.

Later, I spoke with Dr. Uschi Eid, vice chair of the UN's Advisory Board on Water and Sanitation. She emphasized that the UN is focusing on this serious issue as open defecation is the enemy of clean water in so many places. I asked her the countries a group like Rotary might focus upon. She responded that some of the worst problems are in remote areas in India.

The Rotary Foundation project created by Rotarians in India that I reviewed shows the relevance of what we do in our water and sanitation area of focus. We provide young women with dignity, we permit them to get an education, and the community experiences less illness when men and women have the most basic facilities.

Dr. Eid said the greatest needs are in schools and in public markets in both rural and urban areas. I was immediately reminded of the very first Rotary service project, the construction of a public comfort station (restrooms) on a street in Chicago in 1908. At the time, community needs were assessed, a dialogue ensued and a partnership built the comfort station.

Ron Denham of the Water and Sanitation Rotarian Action Group has also discussed the growing trend in Rotary projects addressing the "s" in WASRAG. Without adequate sanitation facilities including hand washing, attempts to clean water are made all the more difficult.

The leaders of the world are now calling for renewed action on a priority that Rotarians have acted on since 1908. Some needs never go away, but the Foundation's Global Grants give us new opportunities to work with Rotary leaders in communities around the world to do good.

# Calendar of Events

**October-November** — Fall semester, Rotary Leadership Institute. For dates and locations and to register, go to [www.rotaryleadershipinstitute.org](http://www.rotaryleadershipinstitute.org)

**Saturday, November 2** — Rotary/UN Day, UN Headquarters, NYC. Register: [www.riunday.org](http://www.riunday.org)

**Nov 4-14** — Polio immunization trip to Nigeria. FMI and to find out more about participating: Ann Lee Hussey [annlee001@yahoo.com](mailto:annlee001@yahoo.com)

**Saturday, December 14** — Zone 32 New Generation Assembly, Boxborough, MA. Hone your ability to lead New Generation programs at the Club and District level. FMI: Carol Toomey, [carolrota-ry@gmail.com](mailto:carolrota-ry@gmail.com), learn more on p. 7.

**January 12-18** — International Assembly, Hyatt, San Diego, CA

**February 14-16** — Pacific Northwest PETS, SEATAC Doubletree, Seattle, WA. FMI: [www.pnwrotarypets.org](http://www.pnwrotarypets.org)

**February 27 - March 1** — Mid-Atlantic PETS, Radisson Valley Forge, King of Prussia, PA. FMI: [www.midatlanticpets.org](http://www.midatlanticpets.org)

**March 6-8** — Northeast PETS, Sheraton Hotel and Convention Center, Framingham, MA. FMI: [www.rotarynepets.org](http://www.rotarynepets.org)

**Friday, March 15** — Success Seminar at Holiday Inn, Swedesboro, NJ. FMI: Alan Hurst, [alanhinct@aol.com](mailto:alanhinct@aol.com)

**March - April** — Spring semester, Rotary Leadership Institute. For dates and locations and to register, go to [www.rotaryleadershipinstitute.org](http://www.rotaryleadershipinstitute.org)

**March 21-22** — Mid-Northeast PETS, Hanover Marriott, Whippany, NJ. FMI: [www.midnortheastpets.org](http://www.midnortheastpets.org)

**June 1-4** — 2013 Rotary International Convention, Sydney, Australia. FMI and to register: [www.riconvention.org](http://www.riconvention.org)

**October 13-19** — 2014 Rotary Institute and Pre-Institute Training, Fairmont Royal York Hotel, Toronto, ON. FMI: [John Stairs, john.stairs@rbc.com](mailto:John.Stairs@rbc.com)

## Public Image



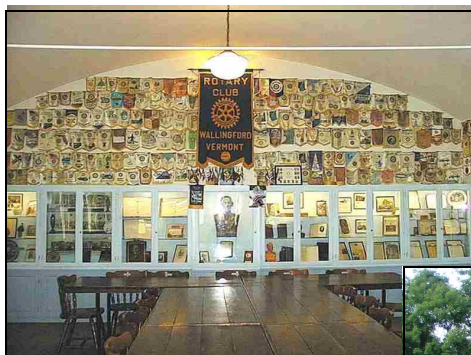
## The Little Red Schoolhouse

By Tony Gilmore

The Little Red Schoolhouse, the one-room school in Wallingford, VT, where Paul Harris grew up, is an icon for all Rotarians!

The schoolhouse was built by Paul Harris's grandfather in 1818, and Paul himself attended here for a few years. Since he was later to found Rotary in large part to recreate the "small town" atmosphere and fellowship he had known growing up, and since his time in Wallingford and this school had a great deal to do with his upbringing, the schoolhouse and his experiences in Wallingford are probably more critical to the essence of Rotary than many of us realize.

Today, the schoolhouse houses a marvelous display of Rotary and Paul Harris memorabilia. The building is used for special events, community meetings, and, yes, it's where the Wallingford Rotary Club has met for more than 80 years. In fact, until recently the club owned the building — but in the past few years it became clear that escalating maintenance costs had become just too large for the local



club to manage, and that's when the District (7870 — southern New Hampshire and southern Vermont) stepped in.

The club and District came to an agreement in which the District took ownership of the building and established a non-profit foundation for its maintenance. The District decided to create a memorial garden on the front lawn of the Little Red Schoolhouse, and Rotarians have been asked to help build an endowment fund of \$250,000, sufficient to preserve this unique piece of Rotary history.

This memorial garden consists of a brick-and-paver Rotary wheel, 20 feet in diameter, and with a bronze center, plus a granite bench and two granite monuments honoring past Rotarians.

Donations will go toward naming the bricks and granite in the garden. Pavers are available (and quite popular!) at \$300 apiece, and can be named in honor of a Rotarian of the donor's choice. Larger donations may be made to name the bronze center wheel (\$10,000), the Vermont granite bench (\$3500) and the 24 gear teeth (\$1500 apiece). Donations as small as \$25 are appreciated and accepted. For more information, and to purchase a paver or more, go to: [www.rotary7870.org](http://www.rotary7870.org).

Once the financial goal is met, it will insure that The Little Red Schoolhouse will be maintained in perpetuity for all Rotarians as a lasting tribute to Paul Harris and the organization he created.



Save the  
Date!



## Zone 32 New Gen Event

The secret to this annual event's success? The tracks are run by those who are participants! Join RYLarians, Rotaractors, Interactors, and Youth Exchangers from ESSEX to share information about Rotary's new generation programs. Participants can be new Rotarians who want to learn as well as experienced District level chairs.

Save the date: Saturday, Dec. 14 at the Boxborough Holiday Inn, Massachusetts. Cost is \$25 for registration (including lunch) and rooms are available at the hotel at the discounted rate of \$99. For more information or to help with the planning, email Carol Toomey: [carolrotary@aol.com](mailto:carolrotary@aol.com).

## Webinar to Help Plan a Service Project



Rotary is presenting a five-part webinar series to highlight strategies, best practices, and Rotary resources that can help clubs and districts carry out sustainable service projects.

This month, the webinars will highlight planning and organizing. Participants will:

- ◆ Learn how to conduct a community needs assessment, and how to select a service project.
- ◆ Evaluate how the service project ties into your club or district's goals
- ◆ Learn the importance of building measurement, evaluation, and sustainability into your project.

Space is limited to 500 attendees, so go to [www.rotary.org](http://www.rotary.org) and register today. All times are listed in Chicago (Central) time.

English: Nov. 19: 10:00-11:00 a.m. and 6:00-7:00 p.m.

French: Dec. 12: 9:00-10:00 a.m.

## Zone Institute 2014



By Julia Phelps

The 2014 Zone Pre-Institute and Institute will be held in Toronto, Ontario, next October 13-19 at the Fairmont Royal York Hotel. PDG John Stairs, Institute General Chair, and I have already begun working on the logistics and program for the week. You'll be hearing more about the program and activities each month in this newsletter.

Those of you who attended the 2013 Institute had the opportunity to sign-up for the 2014 Institute at discounted rates. Our goal was to have 100 registrations completed by the end of the weekend. The registration site was up and running thanks to Rotarian Sandhya Maini, who helped 101 registrations get processed (over 160 registrants). Coupling the technology "know how" of Sandhya with the "dramatic efforts" of PDGs Allen Smith (and his crafty scissors), Ian Ferguson, Carol-Ann Jeronimo, Ernie Luise, Bernadette Jennings, RID Bryn and RIP Ron, we had a great beginning. The rate goes up on Saturday, Nov. 2 – so save a few dollars and sign up *today*.



Part of the incentive to register early was a chance to win three free nights at the Fairmont Royal York Hotel. As you can see in this picture, PDG Marty Helman, D7780, has been praying for this chance to win and guess what – *prayer worked!* Marty and Frank are the WINNERS of the three free nights. Congratulations, Marty!

For everyone else -- you're in luck too! We've been able to arrange a very favorable rate of \$185 CAD a night at the Royal York. You can reserve your room for the Pre-Institute and the Institute by going on the Zone 24-32 website: [www.rotaryzones24-32.org](http://www.rotaryzones24-32.org). Once there look for the Toronto skyline (see photo above). Click on the skyline picture and go to hotel venue to register ([www.clubrunner.ca/Portal/SitePages/SitePage.aspx?accountid=50077&pid=93172](http://www.clubrunner.ca/Portal/SitePages/SitePage.aspx?accountid=50077&pid=93172)).

This reduced rate is also good for three nights before and three nights after the Institute, if you want to explore Toronto at greater length.

PDG John and his wife Carol, and Steve and I are looking forward to seeing all of you next fall in Toronto as we **Reflect on Rotary**.

Julia

## Rotary International Support Team

### Club and District Support

Christopher Brown, Senior coordinator  
Chris.brown@rotary.org  
847-866-3271

Victoria Schiffman, Coordinator  
Victoria.schiffman@rotary.org  
847-866-3354

John Hannes, Senior Coordinator  
John.Hannes@rotary.org  
847-866-3275

Kyle Kubler, Coordinator  
Kyle.kubler@rotary.org  
847-866-3462

Susan Schmidt, Coordinator  
Susan.schmidt@rotary.org  
847-866-3269

### Rotary Foundation

#### Major Gifts Officer: Zone 24

Carolyn Ferguson  
Carolyn.ferguson@rotary.org  
905-304-6831

#### Major Gifts Officer: Zone 32

Jenna (Steiner) Archuleta  
Jenna.archuleta@rotary.org  
847-424-5251

#### Annual Giving Officer

Rachel Greenhoe  
Rachel.greenhoe@rotary.org  
847-866-3415

### Rotary International

One Rotary Center  
1560 Sherman Avenue  
Evanston, IL 60201  
847-866-3021

### Rotary Contact Center

Contact.center@rotary.org  
866-976-8279  
866-9ROTARY

www.rotary.org

*In Memoriam*



## Rotarians Remembered

The following Rotarians were remembered at the Zone Institute memorial service in September. Their leadership will be missed, and their contributions not forgotten.

John G. McD Brown, DG 1991-92, D-7820, RC Wolfville, NS

William B.P. Cadwallader, Past RI Director. DG 1990-92, D-7170, RC Homer, NY

Michael Cavallaro, DG 1992-93. D-7250, RC Glenhead, NY

Raymond J. Chelte DG 1994-95, D-7890, RC Chicopee, MA

Marcel A. Corbat, Past RI Vice President, DG 1964-65, D-7980 RC Stamford, CT

Richard F. Cordell, DG 1984-85, D-6330, RC Flint, MI

Coos J. L. De Vries, DG 1989-90, D-7040, RC Westmount and Montreal-Lakeshore, PQ

Paul Anthony Falcigno, DG 1987-88, D-7980 RC Hamden, CT

Daniel H. Fricke, DG 1991-92, D-7260, RC Riverhead, NY

Larry Jorgensen, DG 2004-05, D-7250, RC Farmingdale Breakfast

John S. Kassees, DG 1978-79, D-7390, RC Lancaster-Northeast, PA

Jeffrey Keahon, DG 2008-09, D-7210, RC Pearl River, NY

W. L. (Leland) Lawrence, DG 1988-89, D-7870, RC Springfield, VT

Arthur J. Lothead, DG 1987-88, D-6330, RC Forest, ON

Alonzo (Al) Malouin, Past RI Director, DG 1973-74, D-7850, RC Drummondville, PQ

Leo R. Martell, Jr., DG 1990-91, D-7930, RC Cambridge, MA

George Mitola, DG 2007-08, D-7470, RC West Orange, NJ

Marcel Morissette, DG 1984-85, D-7090, RC St. Georges, PQ

Alan D. Nemlich, DG 1981-82, D-7230, RC Elmsford, NY

Daniel William O'Connor, DG 1987-1988, D-7040, RC Canton, NY

Dave Patterson, DG 2007-08, D-7040, RC Palgrave, ON.

Louis Piconi, Past RI Vice President and Past Trustee of TRF. DG 1984-85, D-7300, RC Bethel-St. Clair, PA

Donald H. Prowse, DG 1996-97, D-6330, RC Grand Bend, ON

Jerome Sadofsky, DG 1989-90, D-7260, RC Patchogue, NY

William R. Skinner, 1998-99, D-7780, RC Durham-Great Bay and Ft. Myers South

Harold W. Spaeth, 1979-80, D-7490, RC Cresskill-Demarest, NJ

Janice Teetsel, DG 2008-09, D-7470, RC South Orange, NJ

Harvey N. Weinberg, 1983-84, D-7490, RC Oakland-Franklin Lakes, NJ

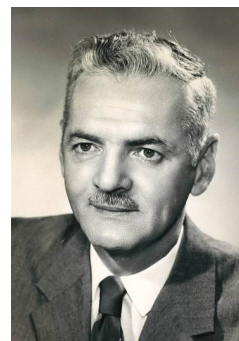
Carl A. Wold, Jr., DG 1991-92, D-7930, RC Lynnfield, MA



Bill Cadwallader



Marcel Corbat



Al Malouin



Lou Piconi