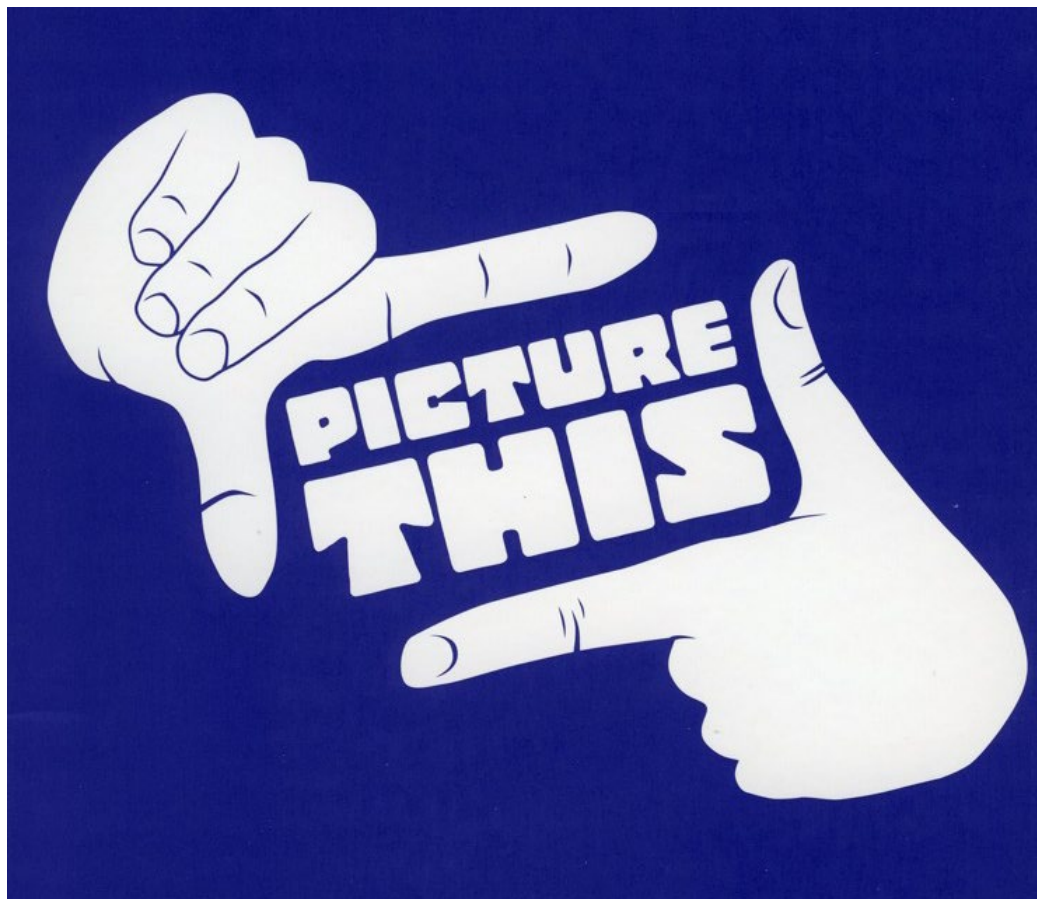


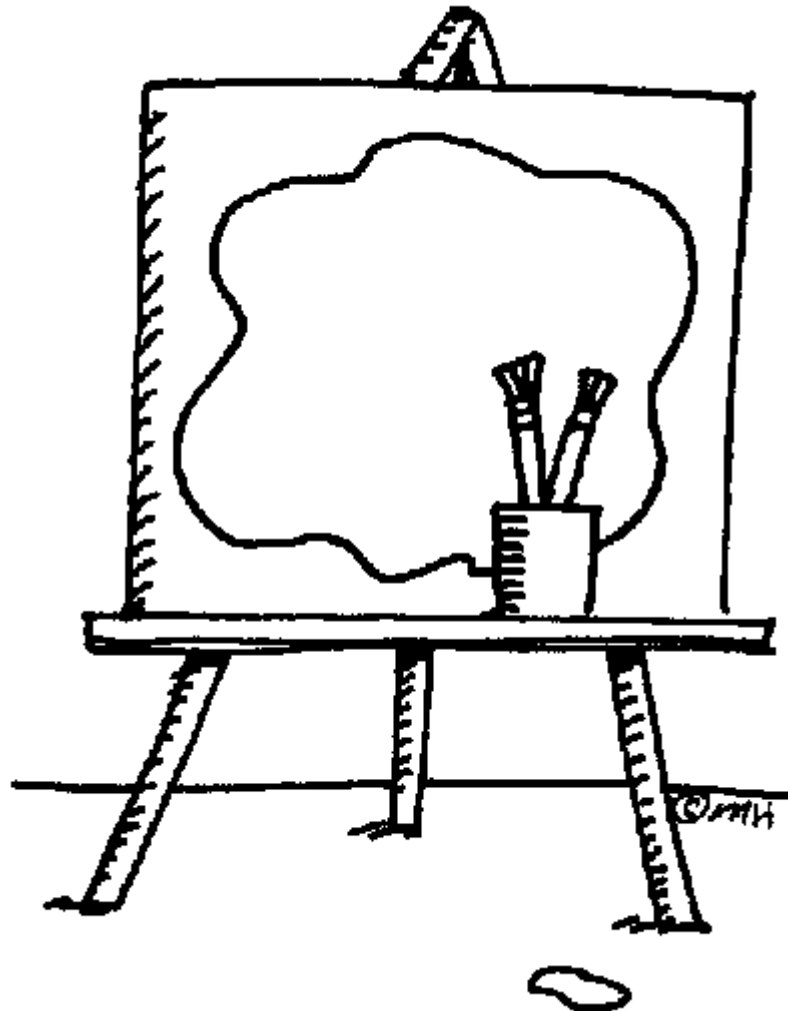
# COMMUNICATIONS

Jade Catherall

District Communications Director 2019-20









# EFFECTIVE COMMUNICATION

- How will you collaborate and communicate
  - With DGE Kalma and your AG
  - With Club Board/Executives
  - Club, Rotarians, Partners and Friends of Rotary?



## THE DISTRICT WEBSITE

- ❖ Your information source
- ❖ District's communication resource
- ❖ **[www.RotaryDistrict9685.org.au](http://www.RotaryDistrict9685.org.au)**

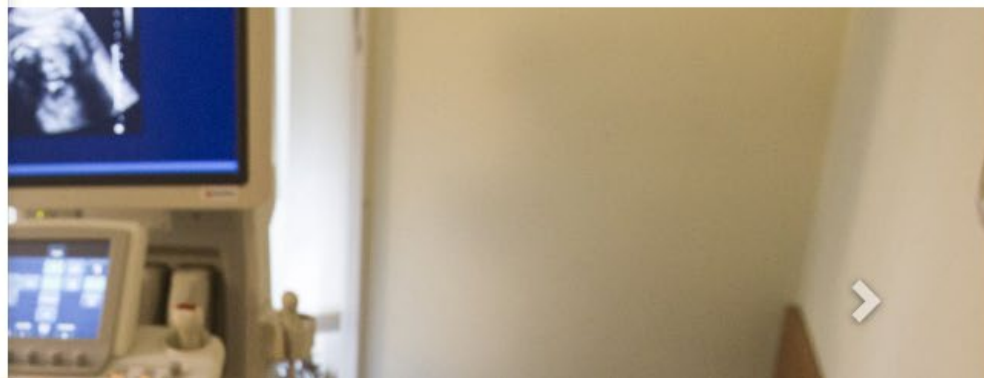


[Home ▾](#)[District ▾](#)[Club Services ▾](#)[Donate](#)[Volunteer ▾](#)[Events ▾](#)[Clubs ▾](#)[About District ▾](#)[Contact ▾](#)

- Leadership ▾
- Future Leaders ▾
- Past Governors
- Our District
- District Team
- District Awards
- Book the District Office
- District Conference
- District Conference Website
- District Training ▾
- District Directory
- 2017/18 DG Club Visits
- District Changeover
- District Zones
- International Convention
- Disaster Relief
- Statutory ▾
- Club & District History
- Club Visioning
- Our people
- Communications & club Websites ▾
- Alumni Association

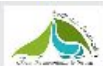
# Rota

# District 9685



**Rotary**  
District 9685



[Home ▾](#)[District ▾](#)[Club Services ▾](#)[Donate](#)[Volunteer ▾](#)[Events ▾](#)[Clubs ▾](#)[About District ▾](#)[Contact ▾](#)[Search](#)[President ▾](#)[Secretary ▾](#)[President Elect ▾](#)[Treasurer ▾](#)[Administration ▾](#)[Membership ▾](#)[Foundation ▾](#)[Public Relations ▾](#)[Projects ▾](#)[Community ▾](#)[Vocational ▾](#)[International ▾](#)[Youth ▾](#)

# Rotary

# District 9685







[Home](#) ▾ [District](#) ▾ [Club Services](#) ▾ [Donate](#) [Volunteer](#) ▾ [Events](#) ▾ [Clubs](#) ▾ [About District](#) ▾

[Contact](#) ▾ [Search this site](#)

District Calendar & Events



[Member Login](#)

- [Presidents' Meeting](#) ▾
- [RLI](#)
- [Events Calendar](#)
- [Book the District Office](#)
- [PETS](#)
- [District Assembly](#)
- [District Conference](#)

# Rotary



# District 9685

**Rotary**  
District 9685



## KEEP UP TO DATE

- ❖ eNews
- ❖ Stories or Articles
- ❖ District Directory
- ❖ Forthcoming Events
  - ❖ District
  - ❖ Club
- ❖ Quick Links
- ❖ Avenues of Service Information

**KEEP UP TO DATE AND  
KEEP THE DISTRICT UP TO DATE**



## CLUB AND MEMBER DATA

- ❖ Accurate Data for clubs & their members is vital
- ❖ All changes MUST first be made on the District site
- ❖ Any changes at RI do not sync back
  - ❖ Ex members continue to get emails from District
  - ❖ New members do not get eNews & communications
- ❖ Reinforce that message to clubs





Member Login

[Home](#) ▾ [District](#) ▾ [Club Services](#) ▾ [Donate](#) [Volunteer](#) ▾ [Events](#) ▾ [Clubs](#) ▾ [About District](#) ▾  
[Contact](#) ▾ [Search this site](#)

# Rotary



# District 9685

Rotary  
District 9685



**Admin**

For Clubs

Grants

For Members

Membership

Organization

Communication

Website

Documents

Reports

Attendance

Events

Help

Launchpad | Administration |

## Home Page Editing

Home Page Stories

Story Management

Edit Home Page Links

Download Files

[Site Pages Management](#)

Photo Albums Management

[Documents Download](#)

Website Sponsoring Area

Website Sponsoring Guide

Website Designer 3.0

Edit Meta Tags **NEW!**

Edit Favicon Logo

Image Library

[Google Analytics](#) **NEW!**

## Communication Services

Email Message Services

Email All Members

District Organization Chart

[Committee Management](#)

Members Email Status report

Email Traffic Report

District eBulletin 3.0

Archived Bulletins **NEW!**

## Events

[Event Calendar](#)

**Edit Events (Version 1)**

[Event Planner \(Version 2\)](#) | [Old Version](#)

MyEventRunner (new window)

## District, Clubs & Membership

District Dashboard

Club & Membership Detail

Member Detail

Request Member Updates

Member Access Rights

Clubs Attendance Management

Edit Executives and Directors

Download Member Data

Member Data Changes

RI Reporting

Reports

Member Designations

[District eDirectory Builder 2.0](#)

## For Members

[Edit My Profile](#)

[Change My Password](#)

**[District Directories \(Old Version\)](#)**

[District Directories \(New Version\)](#)

[Search Member eDirectory](#)

[My Committees](#)

## For Club Executives

Active Members List

Other Users List

Inactive Member List

[Club Information Page](#)

Define Club Executives

Club Attendance Report

Define Club Attendance Manager

Switch on Data Integration with RI (Automatic) **NEW!**

Report Data Changes to RI (Manual Emails)

Missing RI Member ID Report

RI Updates Archive

RI Member Synchronization



# EDIT YOUR PERSONAL PROFILE

## For Members

[Edit My Profile](#)

[Change My Password](#)

[District Directories](#)

[Search Member eDirectory](#)

[My Committees](#)

# Welcome, Jade!



## My Profile

Update your personal information, change your password, and other preferences.



## My Club's Info

For club executives, update your member data, attendance, officers, and meeting information.



## Calendar

View and register for upcoming events, and create new district events.



## Website

Design the layout, theme, and content of the district website.



## Communication

Send emails, bulletins, and other notices to all members and groups within the district.



## Reports

View, download, or print the district directory or export member data.



## Membership

View and modify all club and membership data in the district.



## Organization

View and modify all club and district executives, directors, and committees.



## Attendance

Update club attendance, send reminders, and access attendance reports.

- ❖ Reports > eDirectory Reports
- ❖ Organisation > District Committees
- ❖ Membership > Member Search
- ❖ Events 2 > Event Planner
- ❖ Home Page > Club Directory > Ryde
  - ❖ Hover over a name
  - ❖ Click the name to send an email via your email client
  - ❖ Logged on AGs see more about their clubs



## E-NEWS & EMAIL COMMUNICATION

### ❖ E-News is the primary newsletter in the District

#### ❖ DG's Newsletter, Bulletin Editor's News

- Email news & events to

[editorial@rotarydistrict9685.org.au](mailto:editorial@rotarydistrict9685.org.au)

### ❖ Our Email Service provides targeted internal communication

- Email your final draft material to

[Email.service@rotarydistrict9685.org.au](mailto:Email.service@rotarydistrict9685.org.au)

for distribution – will be distributed within 48 hours.

### ❖ E-News or Email?

❖ Is it informative or more urgent? For all Rotarians or specific?

### ❖ Professional emails

- Use **'bcc'** for a group/committee email
- Include **'Rotary'** in the subject line
- Don't forward emails –**start a new email**
- **Professional & personalised** communications
- Check spelling
- **Review content:** What, When, Where, Why, How, Action!

### ❖ **Communication Protocol** on website under [Communications > District Communications Protocol](#)



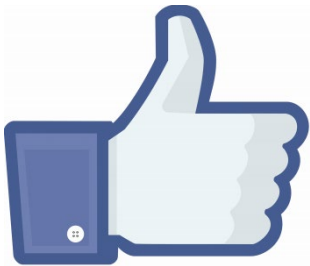
## DISTRICT WEBSITE, SOCIAL MEDIA & BLOGS

- ❖ [rotarydistrict9685.org.au](http://rotarydistrict9685.org.au)
- ❖ [facebook.com/RotaryDistrict9685](https://facebook.com/RotaryDistrict9685)
- ❖ [Twitter.com/RotaryD9685](https://Twitter.com/RotaryD9685)
- ❖ [flickr.com/RotaryDistrict9685](https://flickr.com/RotaryDistrict9685)
- ❖ Blog sites (Wordpress):
  - ❖ Forum
  - ❖ Club News & Events
  - ❖ Club Histories
  - ❖ Speaker Bank



# FACEBOOK

- ❖ facebook.com/RotaryDistrict9685
- ❖ Communicate within the District and beyond
- ❖ Share the power of Rotary
- ❖ Publishes to Twitter
- ❖ Publish their Club Pages and 'post' to District Facebook, to promote and communicate Club activities etc



# ZOOM

- ❖ Video Conferencing
- ❖ Online Meetings
- ❖ Convenient Access from Home/Office
- ❖ Screen Sharing
- ❖ Better time utilisation



## COMMUNICATIONS CONTACTS

### **Email News or Event for the website & eNews**

[editorial@rotarydistrict9685.org.au](mailto:editorial@rotarydistrict9685.org.au)

Please include short text,  
extended text, image, and pdf

### **Request to email Club Executives**

[email.service@rotarydistrict9685.org.au](mailto:email.service@rotarydistrict9685.org.au)

Include subject heading, full text,  
and attachments as pdf and/or image

### **Corrections to website content**

[communications@rotarydistrict9685.org.au](mailto:communications@rotarydistrict9685.org.au)

Please include URL page, clear advice on changes  
for minor corrections, & full text for major corrections

