

ROTARY YOUTH EXCHANGE

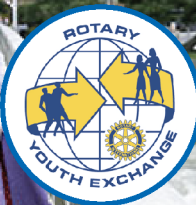
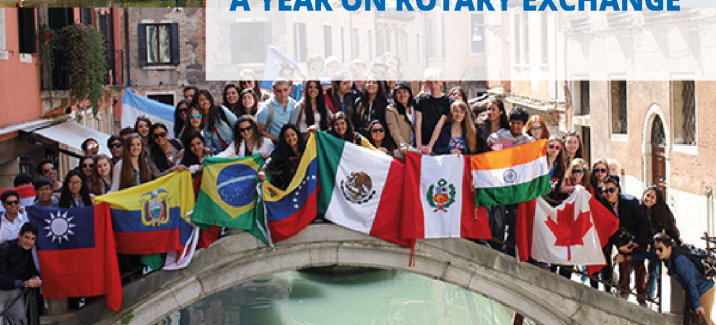
ROTARY YOUTH EXCHANGE

APPLY NOW



THE OPPORTUNITY OF A LIFETIME

- FOR YOUNG AUSTRALIANS CURRENTLY IN YEAR 9, 10 or 11
- LEARN A LANGUAGE
- MAKE LIFE-LONG FRIENDSHIPS
- DISCOVER A DIFFERENT CULTURE
- EXPAND YOUR HORIZONS WITH A YEAR ON ROTARY EXCHANGE



This year, more than 8,000 young people will have the opportunity of a lifetime – a chance to live in another country and see the world from a new perspective through Rotary Youth Exchange

YOU COULD BE ONE OF THEM!

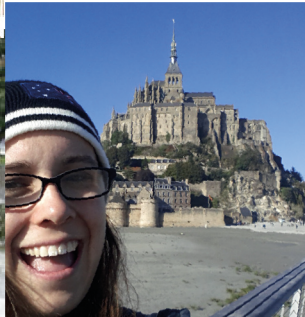
As a Rotary Youth Exchange Student, you'll spend a year living with host families and attending school in a country other than your own. You will learn a new way of living, maybe even a new language, and a great deal about yourself.



As you are learning, you will also be teaching your host community about your country, your culture and your ideas. You'll be a young ambassador, helping to bring the world closer together, seeing amazing places and making some great friends along the way.

If you are ready for the challenge and the rewards of living in another country as an exchange student, then you're ready to discover new worlds through the Rotary Youth Exchange program.

www.rotaryyouthexchange.net.au
secretary@ryep.org



For students who live in Greater Sydney, to Wyong in the north and Lithgow in the West.

Visit the website for a preliminary application form, or contact Rotary District 9685 via email.

www.rotaryyouthexchange.net.au
secretary@ryep.org



Rotary is a worldwide organisation of more than 1.2 million business, professional, and community leaders. Members of Rotary Clubs (known as Rotarians) provide humanitarian service, encourage high ethical standards in all vocations, and help build goodwill and peace in the world.

There are over 340,000 Rotary clubs in more than 200 countries and geographical areas. Clubs are non-political, non-religious, and open to all cultures, races, and creeds.

As signified by the motto "Service above Self", Rotary's main objective is service - in the community, in the workplace, and throughout the world.



www.rotaryyouthexchange.net.au



For more information about Rotary
visit www.rotary.org

WHAT IS ROTARY YOUTH EXCHANGE?

The Rotary Youth Exchange Program (RYEP) is arranged by Rotary Clubs for young people to experience a year of education overseas, with a wide choice of countries. Youth Exchange provides many opportunities, both during and after the exchange is completed.

Rotary Youth Exchange is recognised as the best student exchange program by schools, parents, and students around the world on safety, cost & benefit. Students stay with host families who are arranged by the hosting Rotary Club. Host families may or may not be Rotarians, but are always Rotary approved.

WHO CAN APPLY?

Any student currently in Years 9, 10 or 11 at school. Relatives of Rotary members gain no preference in selection.

Applicants should be making sound progress at school and have a general interest in people and places. They should possess a good general knowledge of Australia - its political system, socio-economic policies and involvement in international affairs. Applicants must have displayed high standards of personal conduct.

They must have an outgoing personality and be interested in cultural or outdoor pursuits. Rotary is looking for young people who can act as personal ambassadors.

WHAT DOES EXCHANGE COST?

Actual cost will vary depending on the country of exchange and the student's personal budget.

SCHOOLING CONSIDERATIONS

There may be credits available for subjects studied and it may be possible for current Year 9 students to replace Year 10 with their year away; however, this needs to be checked with each school before departure. Also, the breaking of the HSC years needs to be discussed with each school.

The real bonuses are a wealth of experience, maturity and conversational foreign language ability.

HOW ARE STUDENTS SELECTED?

Usually students are nominated to the District by Rotary clubs on the basis of the preliminary application and a personal interview with the applicant and their parents.

Students who do not have existing contact with a Rotary club may also apply direct to the District, who will assist the student to connect with a sponsor club. The District committee then holds a second round of interviews to assess all the applicants before arranging exchanges with overseas clubs.

Applicants have the opportunity to nominate preferences for countries of exchange. There are limited places in each country, so applicants must be prepared to accept an exchange in any available host country.

ROTARY PREPARES YOU

Rotary Clubs have an important role in the exchange program. The sponsor Club (in Australia) provides one of their members to act as a counsellor. The counsellor's role is to maintain close contact with the student until the exchange year begins, and with the student and their family during the exchange year. This keeps everyone informed of the process of the exchange.

The District committee also provides training days for a wide range of personal development and other areas, such as public speaking and cultural expectations. This is to prepare the student as much as possible for the exchange. Parents of students are also required to be involved in these training sessions.

STUDENT OBLIGATIONS

Students are required to adhere to the rules of the program, as applied in the country of exchange and the host Rotary Club. These relate to personal behaviour and the expectations of being an ambassador for their country, their family, themselves, and Rotary.

QUERIES

Visit the website or contact Rotary District 9685 via email

www.rotaryyouthexchange.net.au
secretary@ryep.org

Host Rotary Club/District Provides:

1. Board and lodging with host families.
2. A monthly allowance of approx. \$US120.
3. A Host Club & District Counsellor to support the student through their exchange year.
4. Orientation sessions and some group activities.

Student & Family Provide:

1. BV Base cost payable to Rotary of approx. \$8,000 (in 3-4 instalments due from May to November prior to the exchange year). This covers return airfare and visa, as arranged by Rotary, to the country of exchange, insurance, costs associated with administration of the program and the student's preparation for the exchange.
2. Additional day to day living and entertainment expenses, including mobile phone/data costs, clothing, footwear etc.
3. A small emergency fund (repayable at the end of exchange, if unused).
4. Cost of any compulsory language camps in the host country.
5. Other discretionary costs for any organised tours and trips etc.

