

DISTRICT 5170

TRF NEWS TODAY

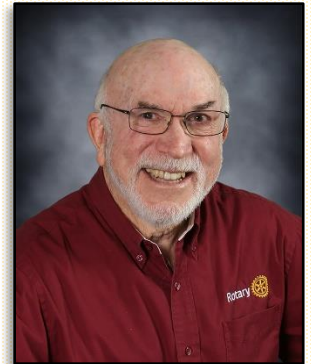
APRIL 2023



CURRENT NEWS OF DISTRICT 5170 AND THE ROTARY FOUNDATION

FROM THE DISTRICT TRF CHAIR

BY PDG ORRIN MAHONEY



We are making progress again this year, following a record year in 2021-22. Congratulations again to the Rotary Club members of District 5170. We are close to our goal, which was higher than last year, and we have learned that one large club has had trouble getting their funds to TRF, so there is more money there than we are showing.

	Number of Members	Annual Fund					
		Goal	% Goals Received	Total	Per Capita	Goal Achieved	Non-Giving Clubs
2022-23	3,786	\$841,450	90.3%	\$779,540	\$205.90	92.6%	3
2021-22	3,893	\$782,450	100.0%	\$1,186,928	\$304.89	151.7%	0
2020-21	3,993	\$646,450	95.1%	\$932,546	\$233.55	144.3%	2
2019-20	3,733	\$735,200	98.2%	\$832,073	\$222.90	113.2%	2
2018-19	3,713	\$775,200	100.0%	\$745,233	\$200.71	96.1%	1

EVERY
ROTARIAN
EVERY
YEAR

Although the total annual fund donation is critical, we also have an increased focus on EREY this year. While still early, we have 7 clubs so far that have achieved EREY status, with many more very close. These are shown in the Monthly Contribution Report posted later in the Newsletter.

Continues on Next Page

Additionally, we are ready to hold the first of our TRF drawings at DG Savita's District Conference on April 29. This is a change in venue from our earlier plan. A reminder of the drawing elements appears to the right.

Be there to see if your club has won.

Finally, The Rotary Foundation has restarted specific Disaster Response Funds. The graphic below shows that once again you can donate to the Ukraine, but also Pakistan and Turkey/Syria. To learn more or to donate, just click [HERE](#).

TRF 2021-22 Drawings

Overall Annual Fund

- 1 point for every \$100 contribution to the Annual Fund (and polio)
- Prize is \$5,000 in DDF. Worth \$9,000 if used in a Global Grant

EREY Drawing

- Each Club has an equal chance if they achieve EREY status.
- Prize is \$2500 in DDF. Worth \$4,500 if used in a Global Grant

For Overall Annual fund, contributions as of Mar 1, 2022

For EREY, contributions as of July 1, 2022

Choose what you would like to support

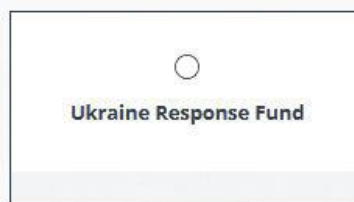
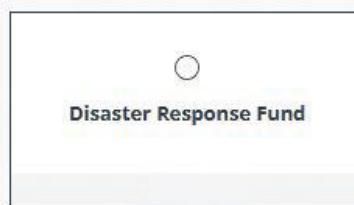
Featured Causes

Areas of Focus

Endowment

Global Grants

Contributions to these featured causes are eligible for Paul Harris Fellow recognition.



Please visit <https://my.rotary.org/en/donate> to learn more about each of these featured causes.

(There are some new tax laws)

Some Practical Advice from our RI Major Gifts Officer

By Tabatha Sparks, RI Major Gifts Officer for Zones 26 and 27



A new year has brought more than just resolutions, as new laws related to charitable giving add to the ways that market changes and inflation may impact your 2023 plans. Smart Rotarians like you are learning how to increase the impact of their giving with well-timed gifts made directly from their retirement accounts ([learn more about the new changes here](#)). Join fellow Rotarians who support The Rotary Foundation with a tax-wise gift from their IRA each year.

- Donors **over 70 ½ can still make a Qualified Charitable Distribution (QCD)** directly from their **IRA** to The Rotary Foundation
- Find our [simple-to-use instructions](#) or use your IRA Administrator's form to initiate the transfer
- **You may be able to reduce income taxes** by taking advantage of this gift type, even if you don't itemize
- Make a gift for Paul Harris Society, to fulfill or create a major gift pledge, to become a Major Donor or Arch Klumph Society member, or reach the next level of giving, all while supporting the causes you care most about
- Establish a fund in Rotary's Endowment that provides support in your name year after year
- **Designate The Rotary Foundation as a beneficiary of an IRA** - Lessen the tax burden for your heirs and secure your Rotary Legacy with your IRA or other qualified retirement plan.
- **Feel good about making the world a better place with Rotary**

Whether you're considering a gift before June 30th to help your club and District finish the Rotary year strong or planning your gift for later in the calendar year, gifts from your IRA could be a tax-wise option.



Tina's Polio Update

By Tina Orsi-Hartigan, PolioPlus Chair



*"Together,
We End Polio"*
District 5170
PolioPlus Drive
Spring, 2023

Rotary International created "PolioPlus" in 1985 and led the Global Polio Eradication Initiative (GPEI) in 1988. Since then, Rotary

International has contributed over \$2.6 billion, countless volunteers and volunteer hours and has protected over 2.5 billion children in 122 countries. However, funds are still needed to reach the goal of a polio free world.

Why are the funds needed? We must continue to immunize more than 400 million children every year even in the most difficult to reach areas of the world. We must stay vigilant and improve the disease surveillance systems to detect any polio virus in a person or in the environment. We must improve public health resources and hire health workers to go door to door to find every at-risk child.

Together, what can we do? We can celebrate what Rotary International and its partners have accomplished. We must understand the need to eliminate polio from the face of the earth and understand the risks if we do not. We must share this knowledge with our friends, families, social groups and organizations.

Lastly, we ask that you contribute to the PolioPlus campaign. Your gift will improve lives, improve child health and invest in the future.

Please take action to make history by eradicating this disease from the world. Together, We End Polio!

Donate now at endpolio.org



Around the Clubs

HELPING MAKE EDUCATION POSSIBLE IN RURAL HONDURAS
By Jennifer Reed, Immediate Past President Rotary Club of San Leandro



Since joining the Rotary Club of San Leandro in early 2015, I've enjoyed many of the beautiful things Rotary offers, including increased engagement in the San Leandro community, participating in service projects with my club and other District 5170 clubs, making wonderful new friends, or traveling internationally through Rotary service projects. When I joined Rotary, I had no idea how important it would become and how rewarding my Rotary experiences would be.

One of the International Projects that my club supports is Educate2Envision (E2E) in Honduras. Katia Gomez, a fellow San Leandro Rotarian and past (2011-12) Rotary District Scholar, founded E2E to address the numerous obstacles facing rural youth in Honduras who desire to study beyond 6th grade. For these youth, growing up in a remote rural community meant that the nearest secondary school would be, on average, 4 hours of walking with transportation costs beyond their families' means. In founding E2E, Katia set out to nurture the human capital of rural youth leaders and equip them with the tools they needed to fight against poverty through education, community service, and entrepreneurship.



The Rotary Club of San Leandro supports E2E financially through grants and service projects in Honduras. COVID meant we needed to look at different ways to achieve our goals and continue the great work Rotary is known for. Last year, starting during my year as Club President, I was involved uniquely with E2E by teaching English as a Second Language (ESL) to young women enrolled in E2E's youth leadership programming. For the year, I worked with five young women. Classes took place

over Zoom and involved basic English conversation through games, worksheets, and practice exercises. For me, this was an enriching way to learn more about the critical programs our club supports and to use my past ESL teaching experience. From 1988-93 I lived in Mexico as a Teacher and Spanish Language Translator. It was so much fun to use these skills through Rotary, and working with these young women was truly inspiring! They



Continues on Next Page

have since graduated from the program (pictured here with their diplomas) and are on to pursue new goals. Suamy is applying to an all-girls bilingual leadership school, Genesis is applying to a university for nursing, and Enna is still undecided but is leaning toward nursing. I have no doubt they will go on to do beautiful things in their community and maybe even become Rotarians.



A little more about Katia and her work in Honduras:

From 2009-2011, Katia served as a District Chair for CARE USA, speaking to politicians in Washington DC and locally about the importance of empowering women and girls to conquer global poverty. After winning the VH1 Do Something Award Newsweek named her as one of the “Top 25 Women Under 25 in the World to Watch.” Katia earned her Master of Public Health from Boston University and her B.A. in International Studies from the University

California, San Diego. In 2015, she was awarded a social entrepreneurship fellowship by Ashoka. During Spring Break of 2009, she made her first trip to Honduras with a college volunteer group to work on water and sanitation; so began E2E. To learn more about E2E and read Katia’s inspiring story, visit <https://www.educate2envision.org>



THE MISSION OF THE ROTARY FOUNDATION OF ROTARY INTERNATIONAL IS TO ENABLE ROTARIANS TO ADVANCE WORLD UNDERSTANDING, GOODWILL, AND PEACE THROUGH THE IMPROVEMENT OF HEALTH, THE SUPPORT OF EDUCATION, AND THE ALLEVIATION OF POVERTY.



TRIPLE CROWN DONOR REPORT

By Phillip Dean, Triple Crown Donor Chair



Within Rotary District 5170, Triple Crown Donor is a special designation for those Rotarians who meet three criteria for giving to The Rotary Foundation:

1. Make The Rotary Foundation a beneficiary of \$10,000 or more in your Estate Plan, thereby becoming a member of the Bequest Society. A pledge of \$1,000,000 or more puts the member in the Legacy Society.
2. Donate at least \$10,000 to The Rotary Foundation over any period of time, thereby becoming a Major Donor. Another level of giving is \$250,000 or more, putting the member in the Arch Klumph Society
3. Give a minimum of \$1,000 cash to The Rotary Foundation during the current Rotary Year.

The number of Rotarians in each of these categories of giving changes continuously during the year. As of 27 March 2023, the numbers are as follows:

- Bequest Society (minimum \$10,000): 66 members
- Legacy Society (minimum of \$1,000,000): 5 members
- Major Donor (minimum of \$10,000): 312 members
- Arch Klumph Society (minimum of \$250,000): 8 members

As of 27 March 2023 there were 36 Triple Crown Donors in the District.

Many Rotarians use Rotary Direct to make their donations to The Rotary Foundations. These are payments where the funds are taken automatically from the Rotarian's assets. The payments may be made monthly, quarterly or annually. If a Rotarian has met the first two criteria and the total of the payments will reach \$1,000 on 30 June, the Rotarian will meet the third criterion and is included as a Triple Crown Donor for the year.

A total of 163 Rotarians are using Rotary Direct this year and 59 of them will have donated \$1,000 or more by 30 June. Of these 59 Rotarians, eight have already met criteria one and two and thus will become Triple Crown Donors. That makes a total so far this year of 44 Triple Crown Donors. Last year the District had 49. I expect there will be a few more by 30 June.

Phillip Dean
Triple Crown Donor Chair

Rotary District 5170 Disaster Response Grant Guidelines

By Cecelia Babkirk, Stewardship Chair for District 5170



Rotary International and The Rotary Foundation created a special program to address Disaster Relief in order to provide immediate funding to meet urgent needs using grants that are outside the usual District and Global Grant programs. There has been little need to access those funds until the recent natural disasters which have affected areas in District 5170. There have been a number of questions about how to access the funds.

In general, following are the parameters established by The Rotary Foundation to access Disaster Response Grants:

1. **Disaster Response Grants (DRGs) can only be issued to a district, NOT an individual club.**
2. Each district has discretion in how to manage the DRGs it applies for.
3. **Each district is allowed only ONE open DRG at a time.**
4. The maximum DRG is \$25,000.
5. Unlike Global Grants, a Community Assessment and sustainability are not required.
6. The goal is to meet short term, urgent needs and to spend the money immediately.
7. **DDF and cash matching are NOT required.**
8. The grants are approved by a specially designated staff in Evanston, after authorization by the District Rotary Foundation Committee Chair and District Governor.

More specifics about the program will be available on the Rotarydistrict5170.org web site by May 1, 2023.

What does this mean in practice? Can our district apply now for a DRG? How will the district determine which project can go in which order?

Here is some information and guidelines:

1. As a district, we encourage individual clubs to put forward projects for consideration.
2. Projects will be considered first-come, first-served, in the order received.
3. Because we can have only one open grant at a time, we require that each project/grant request be \$25,000, no more and no less.

Continues on Next Page

4. We **require** that the requestors organize the project in such a way that the funds will be expended within two weeks of receipt at the district and that documentation and bank statements showing the expenditures are provided within 30 days of funding.
5. Any project presented that does not meet these criteria will be placed on a waitlist until the criteria are met.
6. More details and guidelines to come by May 1st.

And finally, the current status as of 8 April is that D5170 currently has an open Disaster Response Grant, providing aid in Ukraine. The Ukraine DRGs are treated differently than the others in that it is a “multi-district” grant, in which D5170 is the lead district. Before any new DRGs can be approved for our district, this multi-district grant must be reported and closed by all of the participating districts.

Rest assured that first and foremost, any disaster in D5170 will have priority over DRG applications for relief outside the district, once D5170 is able to apply. The Ukraine DRG was approved and paid by TRF prior to the weather-related disasters that occurred in D5170. We have to follow the rules and close the Ukraine DRG before we can have a DRG for the disasters in D5170.

That said, we developed a process to get DRGs approved, funded and closed within 30 days, provided everyone does their part.

If you have any questions, don't hesitate to contact us:

Jon Winston, District Grants Subcommittee Chair
Cecelia Babkirk, Stewardship Chair
Sangita Seshadri, Global Grants Reviewer
Padma Chari, Global Grants Reviewer
Karen Berner, Global Grants Reviewer

jon@winstonhome.com
rotariancecelia@gmail.com
sangitaseshadri@gmail.com
padma.lotus.chari@gmail.com
karen.berner@gmail.com

Please note: A final version of these guidelines and other documentation will be available on the district web site by May 1, 2023. There may be changes or additions.

**WE FUND SUSTAINABLE
PROJECTS**

\$333 million awarded for
global service initiatives in
2020-21



WE TRANSFORM COMMUNITIES

Approximately 47 million
volunteer hours each year




INDEPENDENCE THROUGH HYGIENE EMPOWERING GIRLS



By Dr. Geeta Kadambi, Rotary Club of Fremont Bridge
and Brenda Swiney, Rotary Club of San Jose

High School is the time for the transformations in the mental and physical make-up of young boys and girls. But, in the rural parts of Africa, Nepal, and India, it is also the end of school-going days for adolescent girls. No socializing with others, no possibility of getting an education, no job prospects, no hope for a productive or secure life.

<p>Independence through Hygiene Project #empowering girls</p> <p>Target: 17000 girls and more</p> <p>Till date: Four countries- approx. 2285 kits distributed</p>	 <p>A PERIOD SHOULD NOT BE A FULL STOP</p> <p>LOWEST Cost World Project uplifting an entire Generation</p> <p>Employing women- Educating girls- Training health and hygiene. #empowering girls</p> <p><i>DG Savita Vaidhyanathan</i></p>
---	--

In tribal and rural areas worldwide, girls miss school during their menstrual cycle: that results in school absenteeism (40%), missed exams (12%), poor academic performance (14%), and school life (65%). This is due to the unaffordability of hygienic pads, no changing station (81% don't change in school leading to reproductive tract

infections). Further, the girls cannot participate in sports, or any form physical activity which leads to lack of wholesome educational experience.

How can a biological phenomenon like a period become a full-stop to a girl's education?


District Governor ("DG") Savita Vaidhyanathan had a big dream for her District Governor's project for the year 2022-2023. She could not accept that a natural biological phenomenon of a menstrual cycle would cause girls to miss school for five days a month and eventually make them drop out of school. DG Savita started a small but significant campaign "Independence through Hygiene" so "A period will not be a full stop!" and encouraged our clubs to donate to her Independence through Hygiene project!

When we embarked on this journey nine months ago, little did we know where the path would lead. What originally started as a cash project for buying equipment to manufacture sanitary pads turned into a cash, DDF, and two Global Grants project with a far greater impact

Continues on Next Page

than we could have ever imagined. To date, we have raised \$45,000 in cash donations, and collected \$35,000 in DDF, bringing us to 80% of our \$100,000 goal. This does not include the multiplier impact of the Global Grant match.

Along the way (we originally planned \$12 per kit), we found a great partner, The Global Uplift Group (TGUP) who helped us expand our reach at \$6.00 per kit through their "Save-A-Girl" program. Our funds will help establish sewing centers, train seamstresses, and streamline



Rotary District 5170

Sewing centers in many countries
Women employed to sew kits

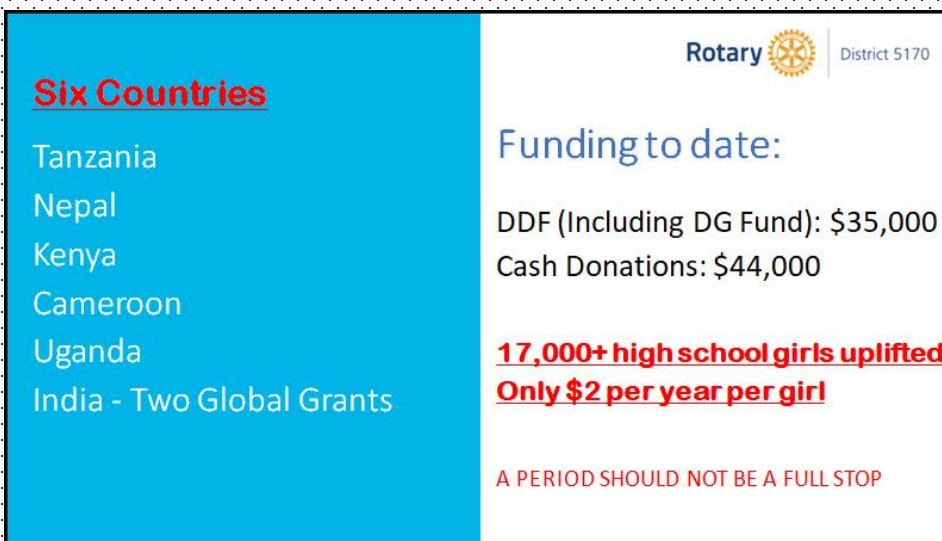
\$6 per kit (per girl) +
paid employment for women =
high return humanitarian project

Embodies Rotary Areas of Focus!!

A PERIOD SHOULD NOT BE A FULL STOP

distribution. At the time of printing, we have distributed approximately 2,800 kits to girls in Nepal, Kenya, Cameroon, and Tanzania. We hope to distribute 17,000 kits and transform the lives of girls world over.

Our request for every Rotarian is to donate \$2 to the project. This amount helps a girl stay in school for a year. This the **LOWEST** cost world project that can uplift an entire generation and transform the lives of girls everywhere.



Six Countries

- Tanzania
- Nepal
- Kenya
- Cameroon
- Uganda
- India - Two Global Grants

Rotary District 5170

Funding to date:

DDF (Including DG Fund): \$35,000
Cash Donations: \$44,000

17,000+ high school girls uplifted
Only \$2 per year per girl

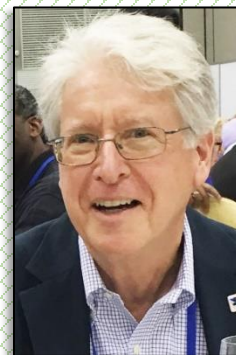
A PERIOD SHOULD NOT BE A FULL STOP

Finally, one of the best things is that this project addresses six Areas of Focus: Disease Prevention and Treatment, Water and Sanitation, Maternal and Child Health – by providing girls with a more sanitary way to manage their periods; Basic Education and Literacy – by educating communities about health and hygiene around the menstrual

process; Economic and Community Development – by giving women in the community a skill and the opportunity to earn wages; and Environment – by providing reusable sanitary kits to girls (expected life to be three years!)

The Major Donor's Journey Continues

By Pat McMenemy, District 5170 Major Donor Chair



As we celebrate the 155th anniversary of our founder's birth on April 19th, many Rotarians commemorate Paul Harris with a gift to The Rotary Foundation.

Rotarians believe we have a shared responsibility to address our world's most persistent issues.

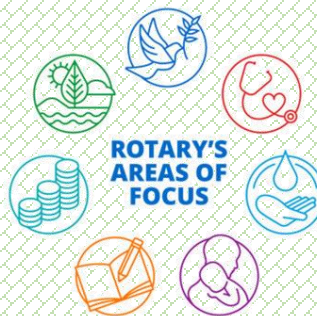
A Headline on the cover of the April 2023 issue of ROTARY is titled: *"POLIO'S FRONT LINE: Meet the Women Working to end the Disease in Pakistan."* Page 34 includes an article: "Bigger than polio, Pakistan's female vaccinators are doing more than helping end a disease..." Five women working to end polio are featured in the article.

"Women working with women on the front line is going to be what gets us across the finish line," says Rotary President Jennifer Jones, who met last year with polio workers in Pakistan.

The Rotary Foundation's areas of focus create global priorities, and harness our collective strength to improve health and livelihood in communities near and far.

Major Donors are often inspired to champion one or more of Rotary's areas of focus:

- * Peace and conflict prevention/resolution
- * Disease prevention and treatment
- * Water and sanitation
- * Maternal and child health
- * Basic education and literacy
- * Economic and community development
- * Environment



Rotarians design achievable, sustainable projects and share the plans with knowledgeable partners, community leaders, and experts to draw on their experience. We craft projects within organizational guidelines to ensure we are improving lives in the most lasting, effective and meaningful ways.

Whether you are about to make your first donation as a Rotarian or you are already a Major Donor of The Rotary Foundation, please take a few moments to reflect upon your 2023-2024 giving goals to The Rotary Foundation of RI.

Continues on Next Page

The people who make Rotary so effective, through their generosity and passion for positive change, come from all over the world and all walks of life. Even so, they share a powerful common trait: they're compelled by a desire to share their good fortune with others, simply because they can make a positive impact for someone whose life has not been easy.

"In Rotary, we indeed measure our value not by what we have, but by what we have given, by the good we have done in the world, and by our capacity to do even more."

R. Ravindran 2015-16 President, Rotary International, and
Ray Klinginsmith 2015-16 Trustee Chair, The Rotary Foundation

For more information, please contact: Pat McMenemy, 2022-2023 D5170 TRF Committee,
Phone/Text: 925-980-6881. Email: pjmcmenemy@mac.com



The Rotary Foundation transforms your gifts into service projects that change lives both close to home and around the world.

Since it was founded more than 100 years ago, the Foundation has spent more than \$4 billion on life-changing, sustainable projects.

With your help, we can make lives better in your community and around the world.

Ian H.S. Riseley

Trustee Chair 2022-23

RI Trustee Chair's Message



April 2023

In a letter to his brother Theo in 1874, Vincent Van Gogh wrote: "If you truly love nature, you will find beauty everywhere."

You can see Van Gogh's love of the natural world in his paintings: luminous sunflowers, gnarled olive trees, and the starry night sky over a Provençal village. When you see nature through Van Gogh's eyes or through your own, such as during a trip to the park or a beach, you can't help but stop to appreciate it. And when you love nature, you also want to take care of it.

April is Environmental Month for Rotary, and Earth Day is the 22nd. Marking the occasion with local projects such as roadside cleanups is fantastic and makes a difference. Consider also thinking big about protecting the environment — one of Rotary's seven areas of focus — by partnering with other clubs and districts on a larger-scale project funded through The Rotary Foundation.

The more our clubs work together on larger projects, the more we accomplish. Supported by a Foundation global grant, Rotary clubs in Pennsylvania and Brazil teamed up to provide plastic-processing equipment for a waste pickers cooperative in the city of Rio Claro. The workers, who recover recyclables from trash, increased their income by 50 percent and expanded the cooperative, while contributing to a cleaner environment.

Acting big is also one of the main ideas behind the Foundation's Programs of Scale. With each \$2 million grant distributed over a program's three- to five-year duration, the work done on the ground scales up to fulfill the potential for long-term sustainable change. The 2021-22 Programs of Scale recipient, Together for Healthy Families in Nigeria, is hard at work right now on solutions aimed at reducing the country's maternal and neonatal mortality rates.

Programs of Scale grants are among the most exciting developments of Rotary and its Foundation in recent years. They will have a big impact on the world. Remember that Programs of Scale grants take nothing away from your Foundation grant projects; the money invested is a relatively small portion of the Foundation's total. In addition, The Rotary Foundation designed Programs of Scale to foster greater partnerships, which can include co-funding the initiative.

So, think big this month — about the environment and about global grants and Programs of Scale — and you will see that, when it comes to the good we can do through our Foundation, the "starry night" sky's the limit.

Monthly Contribution Report

(As of March 27, 2023)

Club Name	Members	EREY	%EREY	Annual Fund Goal	Annual Fund YTD	AF Per Capita	Other YTD	Endow YTD	-- Total --
Alameda	58	41	71%	\$10,000.00	\$10,185.00	\$175.60	\$2,800.00	\$0.00	\$12,985.00
Almaden Valley	22	3	14%	\$0.00	\$2,900.00	\$131.82	\$100.00	\$0.00	\$3,000.00
Campbell	20	3	15%	\$3,000.00	\$1,738.00	\$86.90	\$250.00	\$0.00	\$1,988.00
Capitola-Aptos	45	38	84%	\$10,000.00	\$10,350.00	\$230.00	\$50,250.00	\$0.00	\$60,600.00
Castro Valley	56	20	36%	\$10,000.00	\$13,260.00	\$236.79	\$9,050.00	\$0.00	\$22,310.00
Cupertino	203	171	84%	\$60,000.00	\$67,691.00	\$333.45	\$5,840.00	\$200.00	\$73,731.00
Dublin	43	20	47%	\$13,000.00	\$10,903.00	\$253.56	\$3,350.00	\$0.00	\$14,253.00
East Palo Alto Bayshore	21	1	5%	\$1,000.00	\$1,000.00	\$47.62	\$0.00	\$0.00	\$1,000.00
E-Club of Silicon Valley	46	13	28%	\$10,000.00	\$7,919.31	\$172.16	\$1,375.00	\$0.00	\$9,294.31
E-Club of Silicon Valley Health & Wellness	68	0	0%	\$1,000.00	\$100.00	\$1.47	\$12,145.00	\$0.00	\$12,245.00
E-Club Silicon Valley Smart Village	47	1	2%	\$1,000.00	\$100.00	\$2.13	\$0.00	\$0.00	\$100.00
Evergreen Valley, San Jose	18	1	6%	\$500.00	\$200.00	\$11.11	\$0.00	\$0.00	\$200.00
Freedom	25	5	20%	\$0.00	\$1,450.00	\$58.00	\$250.00	\$0.00	\$1,700.00
Fremont	33	11	33%	\$13,000.00	\$11,950.00	\$362.12	\$1,550.00	\$0.00	\$13,500.00
Fremont Bridge	18	16	89%	\$2,000.00	\$2,488.00	\$138.22	\$0.00	\$0.00	\$2,488.00
Fremont Morning	19	9	47%	\$8,000.00	\$3,200.00	\$168.42	\$325.00	\$12,527.06	\$16,052.06
Fremont-Union City-Newark Sunset	19	19	100%	\$2,250.00	\$1,300.00	\$68.42	\$50.00	\$0.00	\$1,350.00
Gilroy	99	36	36%	\$23,000.00	\$16,975.00	\$171.46	\$3,250.00	\$50.00	\$20,275.00
Gilroy After Hours	60	30	50%	\$1,500.00	\$1,640.00	\$27.33	\$0.00	\$0.00	\$1,640.00
Gilroy Sunrise	14	5	36%	\$2,500.00	\$2,025.00	\$144.64	\$0.00	\$0.00	\$2,025.00
Hayward	51	4	8%	\$5,000.00	\$3,315.00	\$65.00	\$50.00	\$0.00	\$3,365.00
Hollister	58	15	26%	\$0.00	\$4,125.00	\$71.12	\$100.00	\$0.00	\$4,225.00
Livermore	96	45	47%	\$66,000.00	\$49,916.03	\$519.96	\$11,421.00	\$30,760.00	\$92,097.03
Livermore Valley, The	47	25	53%	\$16,000.00	\$9,405.00	\$200.11	\$11,350.00	\$250,000.00	\$270,755.00
Los Altos	168	78	46%	\$40,000.00	\$35,498.50	\$211.30	\$20,785.52	\$0.00	\$56,284.02
Los Altos Sunset	8	7	88%	\$1,600.00	\$5,825.00	\$728.13	\$0.00	\$0.00	\$5,825.00
Los Gatos	120	17	14%	\$35,000.00	\$15,815.20	\$131.79	\$2,912.94	\$0.00	\$18,728.14
Los Gatos Morning	37	28	76%	\$20,000.00	\$17,811.00	\$481.38	\$1,200.00	\$0.00	\$19,011.00
Milpitas	26	15	58%	\$5,000.00	\$2,562.00	\$98.54	\$0.00	\$0.00	\$2,562.00
Mission San Jose	19	12	63%	\$2,500.00	\$2,523.00	\$132.79	\$200.00	\$0.00	\$2,723.00
Morgan Hill	101	45	45%	\$32,000.00	\$18,421.58	\$182.39	\$1,000.00	\$0.00	\$19,421.58
Mountain View	30	16	53%	\$0.00	\$6,765.00	\$225.50	\$0.00	\$0.00	\$6,765.00
Newark	37	16	43%	\$0.00	\$4,180.00	\$112.97	\$800.00	\$0.00	\$4,980.00
Niles (Fremont)	99	29	29%	\$30,000.00	\$28,785.00	\$290.76	\$4,280.00	\$1,000.00	\$34,065.00
Oakland	264	88	33%	\$100,000.00	\$106,396.34	\$403.02	\$4,149.40	\$1,100.00	\$111,645.74
Oakland Uptown	13	6	46%	\$6,000.00	\$2,825.00	\$217.31	\$1,650.00	\$0.00	\$4,475.00
Palo Alto	118	51	43%	\$20,000.00	\$21,283.00	\$180.36	\$4,112.55	\$300.00	\$25,695.55
Palo Alto/University	92	31	34%	\$15,000.00	\$15,325.54	\$166.58	\$300.00	\$0.00	\$15,625.54
Piedmont-Montclair	27	8	30%	\$1,000.00	\$1,500.00	\$55.56	\$0.00	\$0.00	\$1,500.00
Pleasanton	65	22	34%	\$12,500.00	\$13,319.53	\$204.92	\$3,400.00	\$0.00	\$16,719.53
Pleasanton, Dublin, Livermore	13	10	77%	\$2,000.00	\$41,096.24	\$3,161.25	\$16,205.53	\$0.00	\$57,301.77
Pleasanton North	69	22	32%	\$20,000.00	\$9,100.00	\$131.88	\$8,272.00	\$0.00	\$17,372.00
San Jose	423	1	0%	\$40,000.00	\$1,129.00	\$2.67	\$1,000.00	\$15,000.00	\$17,129.00
San Jose East-Evergreen	20	10	50%	\$10,000.00	\$4,000.00	\$200.00	\$25.00	\$0.00	\$4,025.00
San Jose Silicon Valley	15	13	87%	\$40,000.00	\$42,840.00	\$2,856.00	\$100.00	\$0.00	\$42,940.00
San Juan Bautista	32	28	88%	\$4,000.00	\$5,228.50	\$163.39	\$0.00	\$0.00	\$5,228.50
San Leandro	38	7	18%	\$18,000.00	\$13,750.00	\$361.84	\$0.00	\$0.00	\$13,750.00
San Lorenzo Valley (Felton)	44	22	50%	\$6,500.00	\$5,475.00	\$124.43	\$1,190.00	\$0.00	\$6,665.00
Santa Clara	58	36	62%	\$10,000.00	\$10,760.00	\$185.52	\$2,328.00	\$0.00	\$13,088.00
Santa Cruz	103	59	57%	\$16,000.00	\$22,325.00	\$216.75	\$0.00	\$0.00	\$22,325.00
Santa Cruz Sunrise	100	66	66%	\$30,000.00	\$42,149.00	\$421.49	\$2,865.00	\$120.00	\$45,134.00
Saratoga	82	41	50%	\$30,000.00	\$38,125.00	\$464.94	\$4,645.00	\$0.00	\$42,770.00
Scotts Valley	19	9	47%	\$3,800.00	\$2,500.00	\$131.58	\$100.00	\$0.00	\$2,600.00
Silicon Valley	77	0	0%	\$500.00	\$0.00	\$0.00	\$0.00	\$0.00	\$0.00
Silicon Valley Chinese	17	0	0%	\$500.00	\$0.00	\$0.00	\$0.00	\$0.00	\$0.00
Silicon Valley For Global Impact	53	0	0%	\$2,500.00	\$0.00	\$0.00	\$0.00	\$0.00	\$0.00
Silicon Valley Passport	38	4	11%	\$2,000.00	\$1,775.00	\$46.71	\$450.00	\$0.00	\$2,225.00
Silicon Valley Rainbow	13	2	15%	\$1,500.00	\$1,800.00	\$138.46	\$0.00	\$0.00	\$1,800.00
Silicon Valley Star (Sunnyvale)	14	3	21%	\$1,500.00	\$641.67	\$45.83	\$333.33	\$0.00	\$975.00
Sunnyvale	61	27	44%	\$13,000.00	\$9,750.00	\$159.84	\$4,500.00	\$0.00	\$14,250.00
Sunnyvale Sunrise	10	6	60%	\$1,800.00	\$2,100.00	\$210.00	\$0.00	\$0.00	\$2,100.00
Watsonville	77	1	1%	\$10,000.00	\$125.00	\$1.62	\$100.00	\$0.00	\$225.00
Totals	3,786	1,368	36%	\$842,950.00	\$787,640.44	\$208.04	\$200,410.27	\$311,057.06	\$1,299,107.77

As of 27 March 2023

Highest in Category

OF 16 11 2023

10/10/2023

Key to headings:

Do not be alarmed if these numbers are different from others that you may have obtained from another source. These data were obtained from The Rotary Foundation on the afternoon of 27 March 2023. Since the Foundation is dealing with more than one million members, and member donation data is received randomly and can take as much as a week to be registered, some of the numbers may change immediately after they are received.

ROTARY TRIVIA

Trivia Question No. 1:

The oldest Rotary club in District 5170 is the Rotary Club of Oakland (chartered in 1909). Which club is the second oldest in the district?

- (a) Rotary Club of Alameda;
- (b) Rotary Club of Oakland Uptown (when chartered, named Oakland Sunrise);
- (c) Rotary Club of San Jose;
- (d) Rotary Club of Palo Alto; or
- (e) Rotary Club of Hayward?

Trivia Question No. 2:

Does RI have an official flower, and if so, what is it:

- (a) RI has no official flower;
- (b) Common Blue Violet (State flower of both Wisconsin, where Paul Harris was born, and of Illinois, where RI is headquartered);
- (c) Chrysanthemum, the official flower of Chicago, Illinois, home of the first Rotary club;
- (d) Peace Rose (developed to commemorate the end of WWII);
- (e) Lavender (<https://www.givemehistory.com/flowers-that-symbolize-peace/>)?

Trivia Question no. 3:

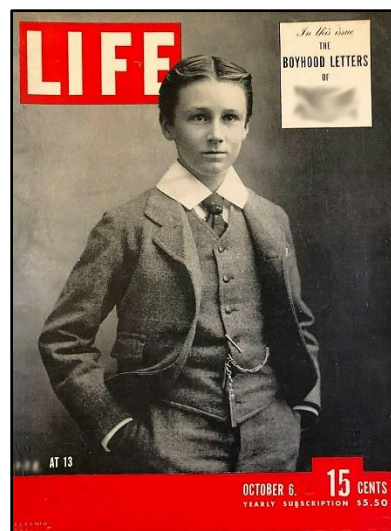
Initially, how much were the dues at the first Rotary Club:

- (a) Up to the member—each paid what he felt was fair;
- (b) \$5.00 per meeting attended;
- (c) \$5.00 per month;
- (d) \$50.00 per year; or
- (e) No dues – \$.50 fines only?

Answers on last page



Can you Identify this famous honorary Rotarian?
(Hint: A past or present American leader pictured in 1978.)



How about this other famous honorary Rotarian?
(Hint: A past or present American leader, pictured at age 13.)

Answers on last page

ANSWERS



The first Rotarian pictured is U.S. Senator Diane Feinstein, Rotary Club of San Francisco. Feinstein has served as a U.S. Senator from California since 1992. Her achievements include the enactment of the federal Assault Weapons Ban in 1994 (which expired in 2014). In 2017, Senator Feinstein became the top Democrat on the Senate Judiciary Committee – the first woman to assume that role – where she helped shape policy on criminal law, national security, immigration, civil rights, and the courts. (She has recently stepped down from that chair position, and announced that she does not plan to run for re-election).

The second Rotarian pictured is Franklin D. Roosevelt, Rotary Club of Albany, New York. Roosevelt served as 32nd President of the U.S., was elected to that office four times, and with his inspiring leadership, led the U.S. through the great depression and much of WWII.

Answer to trivia question no. 1: (c) The second oldest Rotary Club in District 5170 is the Rotary Club of San Jose, chartered in 1914.

Answer to trivia question no. 2: (a) RI has no official flower.

Answer to trivia question no. 3: (e) Initially, the first Rotary club had no dues, but only \$.50 fines.