

DISTRICT 5170

What is Area WCS?
Tribute Gifts
Explained

Around the Clubs
San Jose

TRF NEWS TODAY

OCTOBER, 2019



CURRENT NEWS OF DISTRICT 5170 AND THE ROTARY FOUNDATION

How Ron and Cindy Sekkel were inspired to join the ARCH KLUMPH SOCIETY

BY DISTRICT TRF CHAIR, PDG RUSS HOBBS



Up until a couple of years ago, we only had one member from our District in the Arch Klumph Society - Jerry Fitzgerald (now deceased). To be a member of this prestigious Society, your cumulative donations to The Rotary Foundation must reach \$250,000.

Membership includes an induction ceremony of your choice, either at the Rotary International Headquarters in Evanston Illinois, our Rotary Institute, the Rotary International Convention, or not at all. You also get your picture and biography placed in the interactive Arch Klumph Society gallery at the Rotary International Headquarters.



Ron and Cindy Sekkel

There are several ways of gifting to become an Arch Klumph Society Member: (1) Major Gift Pledges of up to 3 years in length; (2) Legacy Gifts; (3) Outright gifts of Cash; and (4) gifts of appreciated stock to name a few. Our District now has four new members (a member includes one's spouse) who qualify to be in this prestigious society. Here is one of their stories with others to follow in future newsletters.



Past District Governor Ron Sekkel and his wife Cindy were inspired to donate by the experiences of Polio Survivors they have known:

Dr. Jack Bradley was Ron's Thesis Advisor. He became like a second father to Cindy and Ron over 46 years ago. He was afflicted with Polio in his early years at College. His bout with Polio started with a 26 day coma, progressed to a wheel chair, to 2 canes, to 1 cane, and then to walking with a limp. Then years later with Post-Polio Syndrome he

went from a limp, to 1 cane, to 2 canes, to a wheelchair, to a car accident, possibly caused by his disability, which killed him...

Ron's College Roommate of more than 50 years ago didn't talk much about his early bout with Polio but sadly he can't hide his post-polio syndrome issues.

In Ron's year as Governor, his "Best Large Club" President, Kay Walker, was someone who one could visibly see had experienced and met the challenges of having had polio at a young age.

When Ron was a Governor, one of his best mentors was PDG David Heagerty, Inventor of the Pet Rock, who recently passed away. He told Ron how when he was afflicted with a minor case of Polio. He had no idea what was happening to him as he was unable to walk and had to crawl home from school one day.

Continues on next page

PDG Donald Allen thought he was going to be the best shortstop for the New York Yankees until he woke up one morning with Polio.

Jerry Ehrich and his wife were both afflicted with Polio prior to meeting each other. They both required a neck fusion and met each other while in the hospital recuperating from the neck fusion. They both had to step into an iron lung every single night for the rest of their lives.

All of these folks were and are inspirational, especially since not a single one of them used Polio as an excuse to keep from excelling in their careers and lives.

By the way, did I tell you that Ron and Cindy found it motivating just to be able to say that they were Bill Gates's partner in the successful battle to eradicate Polio? That excitement was generated by knowing that Bill Gates was matching every Polio Gifted Dollar with \$2.00 from his Foundation.

We are this close ... but to get to zero requires continuing, not stopping otherwise we might have Polio return with a vengeance!!



Around the Clubs

Rotary Club of San Jose Wheel Chair Mission

by Josh Burroughs



On August 6, 2019, a delegation from the San Jose Rotary Club and friends enjoyed a trip to Mexico City to distribute wheelchairs to deserving children and adults. A total of 280 wheelchairs were distributed.

As the head of the delegation, I emphasized how meaningful it was for the Rotarians to participate on this wheelchair mission, when I said “It is so heart-warming to see what a difference a new wheelchair can make in a person’s life. Some of the recipients were receiving wheelchairs for the first time in their life, and others were receiving replacement wheelchairs for ones that were broken down. For all recipients, it was a joyous experience.”



The recipients ranged from individuals who had been using wheelchairs for their entire life (such as victims of cerebral palsy), people with permanent disabilities, and accident victims who needed wheelchairs for only a portion of their lives. For all recipients, the new wheelchairs were liberating and greeted with tears of joy from the recipients.

Kathleen Thomas recounted one particularly moving story. “I was really struck by the story of a brave young woman who a number of years ago, was involved in an auto accident, and rendered a paraplegic. Her family brought her home, and she was confined to a bed. After being bedridden for a few years, the woman then received a wheelchair from a prior distribution trip. She became ambulatory and was able to return to work. She currently has a job placing disabled persons in jobs. This amazing woman is now the one supporting her family. She thanked Rotary for her new life. We found her story inspiring.”

This wheelchair mission was definitely a collaborative experience. The host Rotary Club in Mexico City was the Rotary Club of Xalostoc, and FURMEX served as the in-country distribution partner. This host club was extremely gracious in hosting the San Jose Rotarians to some wonderful meals, trips to some of the cultural highlights of Mexico City, and the surrounding area, such as the Teotihuacan Pyramids. Another distribution was also hosted by the Rotary Club of La Villa Mexico. And, of course, we attended a District 4170 Conference.

Continues on Next Page

In addition to me, the Rotary Club of San Jose members who participated on this mission included president Karyn Sinunu-Towery, president-elect Fernando Zazueta, whose bilingual skills were put to good use, and the club's international service committee chair, Tim Gill. Other Rotarians included Michelle Acosta, Bonnie Bamburg, Marv Bamburg (Rotary Club of Campbell), Terri Chapman, Jeffrey Lawson, Lucinda Lawson, Sue Smith, Kathleen Thomas. Also participating were Cassidy and Nick Rajkovich who have given continuous generous support to Wheelchair Missions by the Rotary Club of San Jose.



Preparing for Distribution



Goodwill with Host Club

**Two Rotary
Club Presidents**



The Recipients



An Open Letter to D-5170 Rotarians



Annual Giving Chair,
PDG Tim Lundell

Dear Rotarians,

All around the world, and all around your community, your fellow Rotarians have rolled up their sleeves to bring clean water, medical care, education opportunities and a host of other humanitarian projects to make lives better. How do these projects happen? It starts with a need. It then stimulates an idea about how to fill that need. It next becomes a campaign to transform the idea into reality. This is where the Rotary Foundation comes in...and this is where you come in. You see, most solutions to the needs of humankind require financial support, and the mission of The Rotary Foundation is to provide that support As long as it can count on you to support The Rotary Foundation. In this day of GPS tracking, that dollar you gave to TRF might be followed to a water purification system in Africa, or a solar lighting installation in rural Mexico, or a cardiac care facility in southern Chile. But if that dollar is not given, those projects do not happen. If that dollar is not given, one of the most fundamental reasons you became a Rotarian is unfulfilled.

Every Rotarian is not asked to be a Major Donor. For some, even the Double Sustainer amount is a little beyond reach. But every Rotarian is expected to give something. Every Rotarian is asked to make a donation that he or she can imagine traveling to that far away (or nearby) place to make the life of someone less fortunate just a little bit better. One of the proudest things a Rotary Club can say is that, in our Club, Every Rotarian, Every Year gives something in the financial support of the mission of Rotary. Will your Club be able to say that this year? Are you the one that can make that happen?

November is "Foundation Month" on the Rotary calendar for a couple of reasons. By making donations before the end of the year, Rotarians can take a tax deduction this year for their gift. By making donations before the end of January, the gift is placed in the account that will generate a DDF return to the Club three years hence. By featuring TRF-supported humanitarian projects at an early point in the Rotary year, Clubs still have seven months in which to reach their TRF goals for the year. All of these are good, practical reasons. But for me, the reason for Foundation Month is to give everyone a chance to stop and reflect on why the world needs Rotary, and to ask themselves what they are doing to help fill those needs. Why should you make a contribution to The Rotary Foundation? The answer is very simple: because you are a Rotarian.

Best wishes,

Tim Lundell, Annual Giving Chair



ROTARY GLOBAL GRANT SCHOLARSHIP

APPLY TODAY!

Apply for the Rotary International annual Scholarship: A \$30,000 Rotary Global Grant Scholarship will be awarded in the 2020-2021 school year for graduate-level coursework or research outside of the United States.

The mission of The Rotary Foundation, a not-for-profit organization, is the advancement of world understanding, goodwill, and peace. Rotary builds international relationships, improves lives, and creates a better world to support peace efforts and end polio. Rotary does all this by promoting worldwide peace; fighting diseases; providing clean water, sanitation and hygiene care; securing maternal and child health care; supporting basic education and growing local economies.

For the Rotary District 5170 website application and details, please download: <https://rotarydistrict5170.org/sitepage/scholarships/>

If you have any scholarship questions, please contact Dr. Noe Pablo Lozano, Palo Alto University Rotary Club, District 5170 Scholarship Chair: noe@alumni.stanford.edu or your local Rotary Club.

**Application
Deadline**

March 1, 2020

**Candidate
Interview**

**April 4, 2020
(location TBA)**

Service

Above Self

**Be the
Inspiration**

**Rotary
International
District 5170**

Area World Community Service (WCS)

*By Jeboy Koshy, Fremont Morning Rotary Club
Member, District 5170 WCS Committee
Past District 5170 International Service Chair*



Doing World Community Service projects – your options

A host Rotary Club is the Rotary club that is located in the country where the project is to be done, and that club would like to partner with your club as International Rotary Club to do a RI Global Grant project. Here you are presented with a great opportunity to serve the world beyond your local community if your club is willing to learn the processes of an RI Global Grant (GG). However, your club may not have enough Global District Designated Funds (DDF). If so, you would not be alone in this dilemma. In fact, very few Rotary clubs in District 5170 have the minimum \$15,000 Global DDF to do a stand-alone RI Global Grant project with a project cost of \$30,000.

Yet, our District 5170 is known in the Rotary World as one of the most active Rotary Districts in the world doing projects in all corners of the world. How do Clubs in our District accomplish such success year after year? Here are a couple of options to complete the project.

One option is partnering with other Rotary clubs in the district or anywhere in the world, including the Host Rotary club, to come up with \$15,000 DDF or a combination of DDF and cash to fund the project. Funds could be global DDF that would be matched by TRF \$1 to \$1, or cash donations that would be matched by TRF \$0.50 to \$1.00. This option requires quite a bit of leg work on your part. There are several clubs in our District that do International Projects following this format. Finding DDF contributors can be challenging when you want to do Global projects.

But, there is another option successfully implemented in Area 3, Area 4 and Area 6. The option is called **“Area World Community Service Committee (Area WCSC)”**. This Committee is a collaborated effort by Rotary Clubs within an Area.

How does an Area WCS Committee work?

Rotary Clubs in an Area can form a WCS Committee (WCSC) by creating a Memorandum Of Understanding (MOU) among the clubs in that Area. The MOU provides for a willingness on the part of the clubs in that Area to allocate Global DDF each year to pool into a common Global DDF account. Once the pooled account collects \$15,000 minimum, the “Area WCSC” can proceed to do at least one Global Grant project. By way of MOU, each Rotary club in that Area will have the option of presenting Global projects to the Area WCSC. Depending on the total Global DDF or Cash contribution available in the pooled Account of Area WCSC for each year, the Committee members vote for the best presented project(s). The MOU restricts one

vote to each club in your Area regardless of DDF contribution or membership numbers in the club (large club vs small club) to select Global project(s) for that Rotary year.

Advantages of having an Area WCSC:

There are several advantages of forming an “Area WCSC” in your Area.

1. Clubs within an Area are partnering to do International projects year after year.
2. Even a small club in your Area with a small amount of Global DDF will have an opportunity to present its project, and if Area WCSC selects it that club gets to lead the project.
3. RI Global Grant requires a time commitment. The Area WCSC, by doing projects each year, builds GG experts within your Area.
4. As a Committee, you resolve issues that come up during the GG writing.
5. Through the year’s DDF allocation, project selection and Grant writing all become fluid processes.
6. An Area could consider conducting fundraising to raise funds specifically for International Projects. As an example, “Area 3 Chili Challenge” raises funds for “Area 3 WCSC” yearly.
7. Regardless which project is selected, the credit and satisfaction of doing a WCS project is shared among all clubs in that Area.
8. Your Area WCSC has the option to support other clubs outside of your Area by contributing DDF or Cash to their project.

Area 3 and Area 6 have gone through the initial experience of forming an Area3 WCSC and Area WCSC. Therefore, they now have well-documented processes that can be used as a template to form an Area WCSC in other Areas in the District. Also available are the experts in the “**District International Service Team**” to provide your Committee consulting and guidance while forming an Area WCSC in your Area.

Jeboy Koshy

Jeboy_Koshy@hotmail.com

510-386-4402



ROTARY IS A GLOBAL NETWORK OF 1.2 MILLION NEIGHBORS, FRIENDS, LEADERS, AND PROBLEM-SOLVERS WHO SEE A WORLD WHERE PEOPLE UNITE AND TAKE ACTION TO CREATE LASTING CHANGE – ACROSS THE GLOBE, IN OUR COMMUNITIES, AND IN OURSELVES.



TWO EASY WAYS TO INCREASE ANNUAL GIVING TO THE ROTARY FOUNDATION AND ROTARIAN PARTICIPATION



Two easy ways to increase your club's annual giving to The Rotary Foundation, and increase club member participation, are the use of two "nearly unknown" Rotary Foundation forms: (1) Memorial or Tribute Gift, and (2) Workplace Giving Programs.

The Memorial or Tribute Gift form is the form that you and *every* member in your club should have. It is "The Perfect Tribute Gift" for club or family members when celebrating birthdays, anniversaries, wedding gifts, or graduations. And the best part is that **THE AMOUNT OF YOUR GIFT IS NOT DISCLOSED**. The minimum contribution has to be at least \$25.00 and there is no maximum. When you make a tribute or memorial gift, The Rotary Foundation will send a letter to the recipient's family to let them know about your gift, and an acknowledgment to you as the donor. It is also the "The Perfect Memorial Gift" for a club member or family member that has passed away. Every club has some members that just normally don't give to The Rotary Foundation, but using this form for either a memorial or tribute will make a difference.

You can download the Memorial or Tribute Gift Form if you click [HERE](#). If you make such a gift, you will receive a letter from RI like the letter on the next page of this newsletter.

The Workplace Giving Programs form is the other "nearly unknown" form. Most Rotary Clubs have as many as 20% of their membership working for companies that have "matching grant" programs. There are over 15,000 companies that have matching gift programs to encourage their employees to support non-profits. Click [HERE](#) to access RI's matching gifts search tool.

The Rotary Foundation will credit your club and district for any matching gifts you solicit through your employer, and you will receive one point for every dollar donated by your employer to The Rotary Foundation. Information to learn more about Workplace Giving Programs can be found if you click [HERE](#), and then click on Workplace Giving Programs – FAQ's.

This is a sample of a letter you would get from RI acknowledging your tribute gift. (The example is for a birthday tribute.) If you make a memorial gift, the first paragraph of the letter might read like the insert at the bottom of the letter.



[DATE]

[Name and Address of Donor]

Dear [Name of Donor]:

On behalf of The Rotary Foundation, I would like to thank you for your gift honoring [honoree]. An acknowledgment of your thoughtfulness has been sent to the honoree, informing them of your gift made for the occasion "In Honor of your Birthday."

Gifts to The Rotary Foundation sustain vital programs which alleviate human suffering, foster greater cultural understanding, and eradicate polio worldwide. Your commitment to the humanitarian, cultural, and educational programs of The Rotary Foundation is an investment in the future.

Questions or concerns regarding this letter may be directed to the Rotary Support Center by phone at 1-866-976-8279 or by email to memorials@rotary.org.

Thank you for supporting our mission of world understanding and peace.

Warmest Regards,

April Jensen
Donor Services and Support Manager
The Rotary Foundation

On behalf of The Rotary Foundation, I would like to thank you for your gift In Memory of [Deceased]. An acknowledgment of your thoughtfulness has been sent to the family.



Interact Doing Good

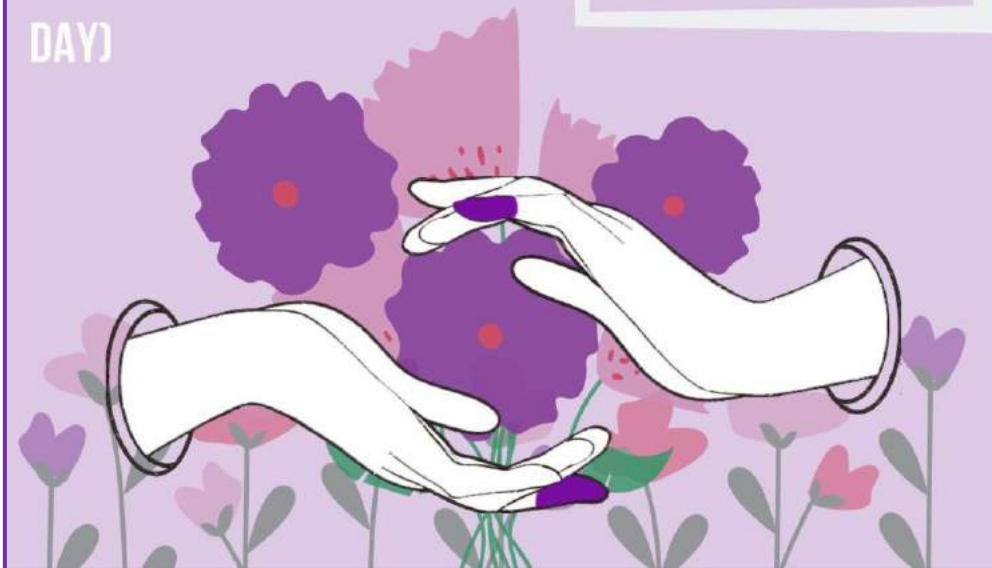


Purple Pinkie Day END POLIO NOW

JOIN ROTARY IN OUR JOURNEY
IN ENDING POLIO! A **SMALL**
DONATION OF **\$1.00** CAN
IMMUNIZE **1 CHILD** FROM
POLIO! HELP US CHANGE LIVES
AND SPREAD AWARENESS ON
OCTOBER 24TH (WORLD POLIO
DAY)

PARTICIPATING SCHOOLS:

AIMS
OAKLAND HIGH
WESTLAKE MIDDLE
CLEVAND ELEMENTARY
EDNA BREWER ELEMENTARY



If you are interested in volunteering at Purple Pinkie day, or wish more information, please contact Greg Annis, Rotary Club of Oakland, at gannis.ga@gmail.com. If you would like to make a donation to support Rotary and Interact in their efforts to eradicate polio, just click [HERE](#).

Monthly Contribution Report

(As of October 11, 2019)

Club Name	Members	EREY	%EREY	AF Goal	% Goal	Per Capita	AF \$ To Date	Polio+	-- Total --
Alameda	59	8	14%	\$15,000.00	20%	\$50.00	\$2,950.00	\$500.00	\$3,450.00
Almaden Valley	24	1	4%	\$3,000.00	7%	\$8.33	\$200.00	\$200.00	\$400.00
Campbell	35	3	9%	\$6,000.00	19%	\$32.14	\$1,125.00	\$2,370.00	\$3,495.00
Capitola-Aptos	51	1	2%	\$12,000.00	4%	\$9.80	\$500.00	\$0.00	\$500.00
Castro Valley	47	1	2%	\$10,000.00	27%	\$56.38	\$2,650.00	\$2,000.00	\$4,650.00
Cupertino	207	42	20%	\$60,000.00	25%	\$71.50	\$14,800.00	\$875.00	\$15,675.00
Dublin	39	8	22%	\$12,000.00	18%	\$55.03	\$2,146.00	\$0.00	\$2,146.00
East Palo Alto Bayshore	22	1	5%	\$0.00	0%	\$113.64	\$2,500.00	\$0.00	\$2,500.00
E-Club of Silicon Valley	42	8	20%	\$3,500.00	56%	\$46.87	\$1,968.37	\$667.04	\$2,635.41
Evergreen Valley, San Jose	27	0	0%	\$2,500.00	0%	\$0.00	\$0.00	\$0.00	\$0.00
Freedom	21	0	0%	\$0.00	0%	\$0.00	\$0.00	\$0.00	\$0.00
Fremont	40	1	5%	\$10,000.00	154%	\$385.63	\$15,425.00	\$0.00	\$15,425.00
Fremont Bridge	21	23	58%	\$12,000.00	3%	\$16.00	\$336.00	\$0.00	\$336.00
Fremont Morning	18	0	0%	\$4,000.00	6%	\$13.89	\$250.00	\$0.00	\$250.00
Fremont-Union-Newark	12			\$3,000.00	9%	\$21.67	\$260.00	\$0.00	\$260.00
Sunset		3	25%						
Gilroy	125	0	0%	\$20,000.00	12%	\$19.26	\$2,408.00	\$0.00	\$2,408.00
Gilroy After Hours	30	11	9%	\$750.00	0%	\$0.00	\$0.00	\$0.00	\$0.00
Gilroy Sunrise	22	1	5%	\$3,500.00	6%	\$9.09	\$200.00	\$0.00	\$200.00
Hayward	66	3	5%	\$10,000.00	8%	\$12.35	\$815.00	\$0.00	\$815.00
Hollister	72	0	0%	\$12,000.00	0%	\$0.00	\$0.00	\$0.00	\$0.00
HuaRen in Silicon Valley	10	0	0%	\$500.00	0%	\$0.00	\$0.00	\$0.00	\$0.00
Livermore	110	10	9%	\$40,000.00	19%	\$69.55	\$7,650.00	\$1,650.00	\$10,300.00
Livermore Valley, The	38	3	8%	\$8,000.00	9%	\$17.97	\$683.00	\$1,100.00	\$1,783.00
Los Altos	165	37	23%	\$37,000.00	37%	\$82.58	\$13,625.83	(\$1,893.10)	\$11,732.73
Los Altos Sunset	8	0	0%	\$2,000.00	0%	\$0.00	\$0.00	\$0.00	\$0.00
Los Gatos	108	12	11%	\$25,000.00	18%	\$42.74	\$4,616.00	\$0.00	\$4,616.00
Los Gatos Morning	48	25	53%	\$20,000.00	38%	\$156.25	\$7,500.00	\$1,090.00	\$8,590.00
Milpitas	32	4	13%	\$6,000.00	10%	\$18.75	\$600.00	\$0.00	\$600.00
Mission San Jose	13	1	8%	\$2,000.00	13%	\$19.23	\$250.00	\$0.00	\$250.00
Morgan Hill	117	38	33%	\$22,000.00	52%	\$97.95	\$11,460.00	\$600.00	\$12,060.00
Mountain View	34	4	12%	\$0.00	0%	\$61.76	\$2,100.00	\$1,000.00	\$3,100.00
Newark	41	26	65%	\$25,000.00	23%	\$140.49	\$5,760.00	\$0.00	\$5,760.00
Niles (Fremont)	100	17	18%	\$27,000.00	27%	\$74.23	\$7,423.00	\$493,044.03	\$500,467.03
Oakland	300	13	4%	\$70,000.00	14%	\$32.90	\$9,871.00	\$0.00	\$10,871.00
Oakland Uptown	10	4	40%	\$3,000.00	53%	\$160.00	\$1,600.00	\$240.00	\$1,840.00
Palo Alto	130	16	13%	\$22,000.00	24%	\$40.38	\$5,250.00	\$100.00	\$5,600.00
Palo Alto/University	107	4	4%	\$10,000.00	46%	\$42.75	\$4,574.69	\$0.00	\$4,574.69
Piedmont-Montclair	14	6	43%	\$2,800.00	43%	\$85.71	\$1,200.00	\$0.00	\$1,200.00
Pleasanton	81	2	3%	\$4,000.00	3%	\$1.60	\$130.00	\$2,425.00	\$2,555.00
Pleasanton, Dublin, Livermore	16			\$3,500.00	0%	\$0.00	\$0.00	\$25.00	\$25.00
		0	0%						
Pleasanton North	55	2	4%	\$0.00	0%	\$43.64	\$2,400.00	\$0.00	\$2,400.00
San Jose	465	2	0%	\$30,000.00	4%	\$2.69	\$1,250.00	\$500.00	\$1,750.00
San Jose East-Evergreen	23	4	17%	\$3,000.00	143%	\$186.96	\$4,300.00	\$0.00	\$4,300.00
San Jose Silicon Valley	21	1	5%	\$8,000.00	4%	\$16.19	\$340.00	\$270.00	\$610.00
San Juan Bautista	34	2	6%	\$4,500.00	10%	\$13.24	\$450.00	\$0.00	\$450.00
San Leandro	40	0	0%	\$14,000.00	0%	\$0.00	\$0.00	\$340.00	\$340.00
San Lorenzo Valley (Felton)	34	0	0%	\$6,500.00	0%	\$0.00	\$0.00	\$0.00	\$0.00
Santa Clara	73	2	3%	\$20,000.00	5%	\$14.93	\$1,090.00	\$0.00	\$1,090.00
Santa Cruz	113	5	5%	\$15,600.00	7%	\$9.51	\$1,075.00	\$0.00	\$1,075.00
Santa Cruz Sunrise	93	4	4%	\$25,000.00	13%	\$35.90	\$3,338.50	\$0.00	\$3,338.50
Saratoga	98	1	1%	\$27,000.00	7%	\$20.41	\$2,000.00	\$0.00	\$2,000.00
Scotts Valley	14	0	0%	\$3,100.00	0%	\$0.00	\$0.00	\$200.00	\$200.00
Silicon Valley	0	0	0%	\$0.00	0%	\$0.00	\$0.00	\$0.00	\$0.00
Silicon Valley Passport	49	2	4%	\$2,000.00	144%	\$58.67	\$2,875.00	\$110,170.00	\$113,045.00
Silicon Valley Star (Sunnyvale)	18			\$2,000.00	4%	\$4.44	\$80.00	\$0.00	\$80.00
		1	6%						
Sunnyvale	54	2	4%	\$12,000.00	3%	\$6.48	\$350.00	\$0.00	\$350.00
Sunnyvale Sunrise	11	2	18%	\$2,200.00	55%	\$109.09	\$1,200.00	\$0.00	\$1,200.00
Watsonville	76	1	1%	\$10,000.00	5%	\$6.84	\$520.00	\$0.00	\$520.00
	3,733			\$713,950.00	21.58%	\$41.28	\$154,095.39	\$617,472.97	\$773,818.36

In green = 100% or more

In blue = high number



ROTARY TRIVIA

Trivia Question No. 1:

In 1911, Paul Harris gave a Rotarian a budget of \$25.44 to complete a certain task. What was it?

- (a) Design a new Rotary logo;
- (b) Mimeograph and mail *The National Rotarian* magazine to 2,000 Rotarians;
- (c) Recruit a group of Boston, Mass. business leaders to form a new Rotary Club;
- (d) Decorate Rotary's new head office; or
- (e) Purchase and send a bouquet of flowers to Helen "Nellie" Taft, wife of then U.S. President, William H. Taft.

Trivia Question No. 2:

Where and when did RYLA begin?

- (a) Winnipeg, Canada, 1939;
- (b) Seattle, Washington, 1949;
- (c) Queensland, Australia, 1959;
- (d) Vancouver, Canada, 1969; or
- (e) Dublin, Ireland, 1979?

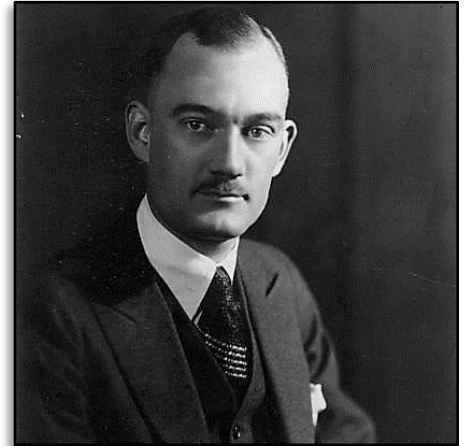
Trivia Question no. 3:

In which year was the Paul Harris Fellows recognition established?

- (a) 1927;
- (b) 1937;
- (c) 1947;
- (d) 1957; or
- (e) 1967?

Answers on last page of this newsletter

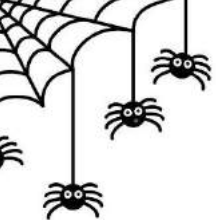
Can you Identify
this famous "card
caring" Rotarian?



TRF NEWS TODAY

Did you know ...
That past issues*
of *TRF News Today* are
available?
Just click [HERE](#)

*With lots of good stuff, such as news about club TRF projects in District 5170; stats, puzzles, Rotary trivia; and helpful information about the Paul Harris Society, major donors, Triple Crown Donors, Annual Giving, and of course, The Rotary Foundation.



Introducing . . . KenKen® for readers of *TRF News Today*!

First, try an easier puzzle:

2÷		4	7+
1	1—		
1—	2÷		2×
	3		

KenKen® is a registered trademark of Nextoy, LLC,
©2019, KenKen Puzzle LLC.
All rights reserved

How did you do? Did you enjoy these puzzles? Please Let me know.

EdJellen@gmail.com.
(Solutions are on the next page.)

Simple Rules for KenKen®

1. Fill in each box with a number from 1 to 4; in the harder puzzle, 1 to 6.
2. Do not repeat a number in any row or column.
3. The numbers in each heavily outlined set of squares, called cages, must combine (in any order) to produce the target number in the top corner using the mathematical operation indicated.

www.KenKenpuzzle.com

Next, a puzzle that's a bit more difficult:

6×		2÷	2—	9+	
24×				4—	
	2—		4	24×	
3÷	2—	4—		3—	
		3÷			2—
40×			2÷		



2	1	3 ₃	4
1 _{2x}	2	4 _{2÷}	3 ₁₋
4	3	2 ₁₋	1 ₁
3 ₇₊	4 ₄	1	2 _{2÷}

1	3	6 _{2÷}	4	2	5 _{40x}
3 ₋₂	5	2	6 _{3÷}	4	1
4	2 ₋₃	1	5 ₄₋	6 ₋₂	3 _{3÷}
6	1 _{24x}	4 ₄	3	5 ₋₂	2
2	6 ₄₋	5	1	3	4 _{24x}
5	4 ₉₊	3 ₋₂	2 _{2÷}	1	6 _{6x}



KenKen® is a registered trademark of Nextoy, LLC, ©2019, KenKen Puzzle LLC. All rights reserved



The “card caring” Rotarian is Joyce C. Hall, Rotary Club of Kansas City, Missouri (once a club president), who founded Hallmark Cards, Inc. The company went from a tiny postcard shop in Kansas City to the world's largest manufacturer and distributor of greeting cards, with thousands of retail outlets around the world and annual sales of \$4 billion.

Answer to trivia question no. 1: (b) In 1911, Paul Harris tasked the Rotarian to spend \$25.44 to mimeograph and mail a new publication, *The National Rotarian*, to all 2,000 Rotarians, nationwide.

Answer to trivia question no. 2: (d) RYLA began in Queensland, Australia in 1959.

Answer to trivia question no. 3: (d) The Paul Harris Fellows recognition was established in 1957.