

DISTRICT 5170

California Admission Day – September 9

TRF NEWS TODAY



SEPTEMBER 2021



CURRENT NEWS OF DISTRICT 5170 AND THE ROTARY FOUNDATION

FROM THE DISTRICT TRF CHAIR BY PDG ORRIN MAHONEY



The Rotary Foundation is really a three legged stool made up of three elements, The Annual Fund, PolioPlus, and the Endowment. Let's take a look at each element and how we are doing in District 5170.

Three basic TRF elements

Annual Fund
(SHARE)

Polio Plus
Fund

Endowment

Annual Fund- The Annual Fund is the primary funding mechanism for many of our local and most of our international projects done by the Clubs in the District. One-half of all money donated comes back to the District (and the Clubs) in the form of District Designated Funds (DDF). The rest is used to match funding for Global Grant projects. In this district the DDF is allocated in proportion to Annual Fund giving three years earlier. In other words, the more you give, the more you get. We set a record year last year for Annual Fund donations, so we will have record amount of DDF to spend on projects in three years. It is early in our 2021-22

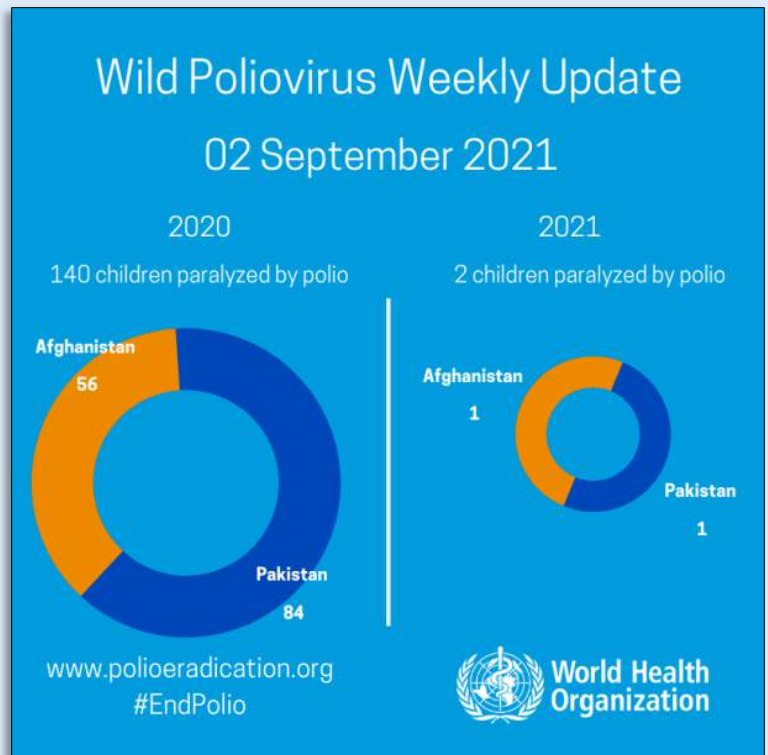
Continues on Next Page

Annual Fund drive, but we are on track for another banner year. allocated in proportion to Annual Fund giving three years earlier. In other words, the more you Fund drive, but we are on track for another banner year. You can find more information from PDG Russ Hobbs, later in this newsletter.

PolioPlus- As you know, eliminating polio is Rotary's number one goal, so continuous funding of the Foundation's PolioPlus program is essential to the cause. There is some very good news on the polio front as we are nine months into the year and there remain only 2 cases of wild polio virus in the world, one in Pakistan, and one in Afghanistan.

Many people have asked how the recent Taliban takeover of Afghanistan will affect our efforts there. The good news is that after the fall of the Afghanistan government in mid-August, the new leadership has agreed to keep on the acting health minister who has been effective in righting the program since February. Taliban leaders have visited the national and regional polio offices and pledged their support for the polio eradication program. On 23 August, a Rotary sponsored roadside vaccination hut provided vaccinations to children under five with local Taliban providing the needed security. Penni Bengston, Our PolioPlus Chair, has additional information later on this newsletter.

Endowment- The Endowment provides ongoing, long term funding for our projects and programs. It can be funded by outright gifts, but more typically by bequests contained in people's estate plans. Our District has been fortunate to receive significant additions to the endowment over the past few years and already has added almost a million dollars this year. Depending on the donor's wishes, DDF from their gift can come back to the District, and their Club for ongoing project funding. Liz Gallegos, our Bequest Society chair, has additional information on how you can add to the endowment with your future gift.



SERVE TO CHANGE LIVES

Around the Clubs

Breath of Life, Manali, India

By Rajan Kapur, Rotary E-Club of Silicon Valley Smart Village



Manali lies nestled at 7000', near the source of the Beas river in the Kullu Valley, 300 miles north of New Delhi. It is surrounded by 20,000' peaks and biodiversity hotspots. The area is home to hill deities and temples representing Hinduism, Buddhism and sometimes both. Manali is a destination, and a gateway to the moonscapes of the Lahaul and Spiti valley. The area attracts almost 3 million visitors a year from the plains of India and beyond. It takes your breath away.

This area has a permanent population of 500 thousand spread over 7,500 square miles. It is served by the 55-bed Lady Willingdon Mission Hospital in Manali. Oxygen cylinders are supplied via a 160 mile round trip that takes 8 hours. In May, a second COVID-19 wave hit India. Then District Governor Davinder Singh of District 3070 contacted Rotary E-Club Silicon Valley Smart Village to partner in deploying an oxygen plant at the Mission Hospital. We jumped at the opportunity to address a pressing need. IEEE Smart Village President John Nelson contributed financial and moral support. We were joined by Alysa Sakkas and Shyamoli Banerjee from Cupertino, and Ravi Menon from Silicon Valley Passport. Mahesh Nihalani opened many doors.



Street Food Vendor who Donated \$4

The Rotary Club of Manali, under the leadership of Amitabh Sharma, Vimpy Bakshi, Shamsheer Singh, Gajendra Thakur, Alka Chauhan, Anila Dabra, Amita Thakur and others, raised \$25,000 in a matter of weeks. In a moving interview to be presented separately, they will recognize a street food vendor who donated \$4, an entire day's earnings, because he saw a cause he believed needed support.

As I was driving up to Manali on 7th August, I received a call informing me that our application had been approved! Thereafter, two days of personal and professional hospitality were accompanied by celebrating with Loogdi, a local rice beer, and Scotch Whisky, a wonder of global marketing. My hosts wrapped up the evenings with local Pahari songs, recognizing my early childhood in the next valley down river. This is the first Global Grant awarded to Manali as the Host Sponsor club.

Continues on Next Page

I visited Dr. Philip Alexander at the Mission hospital. He informed me that their patients live at an altitude of between 5,000' and 11,000'. He showed me a covered site for the proposed oxygen plant, and back-up generator. He spoke about plans for training, operation and maintenance. We discussed making gumbo in the mountains (his wife is from Baton Rouge), and medical statistics.



Dr. Philip with Patients
at Mission Hospital

COPD is the leading cause of death in the area. This opened the path to supply repurposed CPAP/BiPAP NIV machines*, spearheaded by Dr. Kusum Atraya in Morgan Hill, California. This all-volunteer initiative has found support from a few members in District 5170 who are collecting abandoned CPAP/BiPAP machines for refurbishment. It is worthy of more support.



Breadth of Life Cooperative Leadership

The Manali team is racing to start construction of the plant. Subject to lead time vagaries, they hope to have it operational within a quarter. There are other projects in this underserved region of District 3070, including some in my birthplace in Mandi. Current DG Dr. US Ghai is an enthusiastic supporter. This is an unparalleled opportunity to build capacity.

The vision of combining efforts of IEEE Smart Village and Rotary International led

to the formation of Rotary E-Club Silicon Valley Smart Village in June 2020. I thank founding President Robin Podmore, and PDG Ramesh Hariharan, for creating new pathways to make a difference.

*CPAP and BiPAP are types of non-invasive (NIV) ventilation machines used in acute respiratory failure. Both provide forms of positive airway pressure to open and support the airway during sleep. Ed.

The mission of The Rotary Foundation of Rotary International is to enable Rotarians to advance world understanding, goodwill, and peace through the improvement of health, the support of education, and the alleviation of poverty.



Penni's Polio Update: Good News, Bad News

By Penni Bengston, District PolioPlus Chair



As I embrace being the Polio Plus lead for District 5170 I have to admit it's been a slow start in wrapping my arms around the world situation and trying to make heads or tails of all the data.

There's good news and some not-so-good news in the polio world the past few months. The good news is that for the past several weeks not a single case of illness has been reported due to the wild polio virus in the entire world. But there's a caveat to that – with the recent upheaval in

Afghanistan and protests in Pakistan it may be that reporting isn't happening, but we should all be hopeful that's not the case.

The not so good news is that the incidents of vaccine-induced polio, which in the COVID data parlance, would be called "breakthrough" infections, are slightly on the rise in Africa. There are 30 cases in Senegal and 47 cases in Nigeria as of the latest report from the World Health Organization on August 31. Overall, the vaccine-induced infections are not as virulent or severe as wild cases. But the key here is that they are occurring in populations of unvaccinated persons. Doesn't that sound familiar? The difference is that there are still under 200 reported cases of vaccine induced infections in the entire world. Think about that in terms of where we are with today's pandemic!

What does that mean? Vaccines work and we have to work even harder now to keep that message out there and support the global efforts. We can't let up on efforts to continue polio vaccine distribution. We are so close! Last week the health ministers from the G-20 countries met in Italy and re-affirmed their pledge via this quote: "We re-affirm our commitment to eradicate polio... We note the critical role that adaptable surveillance capacity, like that found in the Global Polio Eradication Initiative, has in the ability to reach vulnerable communities to prevent and respond to pandemics."

The first outbreaks of polio were reported in the mid-1800s. FDR contracted polio in 1929, and first vaccine efforts were available in the early 50s. That's 100 years of dealing with this disease and it took almost 10 years just in the US for US vaccine trials and data collection until the disease was reduced by 80-90%. Eradication in North America was finally achieved 20 years ago.

All that research laid the foundation for a SARS-Covid vaccine literally developed in the blink of an eye! Hopefully some of those lessons and certainly the infrastructure for worldwide delivery is being leveraged along with the polio vaccine efforts.

Over the next few months we'll be gearing up for our annual Polio Plus drive at the club, district, and worldwide level. So please be thinking about how you can help and what we can do as a district to make a real, sustainable difference in the world.

PLANNING YOUR ANNUAL GIVING CAMPAIGN

By PDG Russ Hobbs, Rotary Club of Santa Cruz



When I was District Governor in 2006-7, our slogan was, “Teamwork is how ordinary people do extraordinary things”. If you are a Club President, and thinking about how you can lead your club to accomplishing “Extra Ordinary Things” regarding your club’s Annual Giving to The Rotary Foundation, permit me to suggest a few ideas.

TRF CHAIR—Select your Rotary Foundation Chair, and then let him or her select their team. My grandmother used to say that “many hands make light work,” and that slogan is still relevant today. The Foundation Chair should be a recognized leader in the club like a past president.

Reports—As Club President, you and your TRF Chair have access to Annual Giving Reports like: (1) Club Recognition Summary, (2) Club Foundation Analysis; and (3) the District Monthly Contribution Report. These reports are available at RotarySupportCenter@Rotary.org, by calling 866-976-8279 or going to the District website under TRF. These reports show your clubs annual giving over the last five years, and can even show how your club compares to other clubs in the District that are similar in size.

ESTABLISH GOALS—Once you have seen where your club has been, compared to other clubs, set an Annual Giving Goal with your TRF Chair.

ROLL OUT THE PLAN TO YOUR CLUB—make an announcement of your thirty-day plan with a timetable: (1) mail out letters and pledge cards; (2) show a short power point or video each week of the great work being done by The Rotary Foundation. If you have club members that have been on TRF trips, have them tell their stories. (3) use the clubs Annual Giving Points to leverage annual giving (example—a member donates \$200, and the club matches the \$200 with Annual giving points); and (4) explain how Rotary Direct (having the donation come out of a checking account each month) can make giving easy.

TRACK RESULTS—collect pledge cards and checks. Some members may not be able to give you a check during the Annual Giving Campaign but can give you a pledge card which is a promise to write a check by December 31st. Finally, follow up with those that have not responded, as the goal is Every Rotarian Every Year (EREY) of at least \$25.00. Some clubs that are “fining clubs” have found clever ways of getting everyone on board, by levying a fine for some “alleged misdeed” and then sending the fine to RI in the members name. Remember to have fun, and that Teamwork is how ordinary people do extraordinary things.



CELEBRATING A MILESTONE BY CREATING A LEGACY

By Liz Gallegos, District 5170 Bequest Society Chair



Doing good through International service projects got Karen Friedman passionate about Rotary. A proud Rotarian of the Oakland #3 Club for the past ten years, Karen first learned about Rotary through her involvement with another international organization where she met her future sponsor, Gail Uilkema.



Karen Friedman, left, with her hosts in Medellin, Colombia

Now a veteran International project leader and active in her club's Karl Stucki World Community Service Committee, Karen has championed a strong relationship with several Medellin, Colombia Rotary Clubs. They have partnered with multiple projects and international visits.

"A lot of Non-Governmental Organizations do good work. I found that TRF is most impressive with its project reach throughout the world, how well-run and invested The Rotary Foundation is, and that the vast majority of charitable funds are directly distributed to these humanitarian projects. Rotary is a very responsible charity, and I appreciate the checks and balances in place for projects," states Karen.

A retired Real Estate Attorney, Karen celebrated a milestone birthday by evaluating and updating her estate plan. In Karen's living trust, she designated a remainder interest of her estate to both her Club's Endowment and The Rotary Foundation, where she is recognized as a Bequest Society Donor, Level 6. The bequest continues to grow as real estate values in California increase.

"I discovered along the way that giving of my time, money, and resources to the causes that are meaningful to me are fulfilling and that doing so made me happy. Therefore, I am drawn to the opportunities that provide me a deep sense of fulfillment and gratification which then creates happiness. Philanthropy is part of that!"

We thank Karen for advancing Rotary's International Service through her work with the Rotary Club of Oakland and her support after her lifetime with a bequest to The Rotary Foundation. Each of us can do good in the world today and beyond our life with a bequest to The Rotary Foundation. To learn how to include The Rotary Foundation in your estate plans or about the many ways to make a gift, [reply to me](#) or phone me at (408) 391-7800. If you have committed to The Rotary Foundation with a future legacy gift, let us know so that we can thank you today!

To learn more, visit: <http://www.rotary.org/legacy>. (For lots more information and to get the enrollment form, scroll down this web page, click on "Your Rotary Legacy – brochure," and download the PDF file.)

DISTRICT 5170 MAJOR DONORS PROVIDE MAJOR SUPPORT TO THE ROTARY FOUNDATION

By Pat McMenamin, District 5170 Major Donor Chair



As we enter the third month of this Rotary year -- Rotary International President Shekhar Mehta reminds us that empowering people through education is among the boldest goals we have as Rotarians. September is Basic Education and Literacy Month in Rotary. Literacy is the first step out of poverty. As Nobel laureate Malala Yousafzai noted: "One child, one teacher, one book, and one pen can change the world."

District 5170's TRF Committee is reaching out to welcome and recognize new Major Donors within our District during the 2021-2022 Rotary Year.

As stated by The Rotary Foundation, Major Donors are individuals, non-Rotary affiliated foundations, and corporations whose personal cumulative donations to The Rotary Foundation reach US \$10,000 or more. Contributions from spouses are often combined, upon request.

Those whose cumulative donations reach US \$250,000 or more -- are recognized as Arch Klumph Society members (AKS). Spouses who give jointly as a couple are counted as a single Major Donor/AKS Member on The Rotary Foundation's report. If the spouses are in two different clubs, they will be counted as one on each club's report. More information is available from The Rotary Foundation.

Major Donor recognition levels are defined as follows:

Level One: US \$10,000 to \$24,999;
Level Two: US \$25,000 to \$49,999;
Level Three: US \$50,000 to \$99,999;
Level Four: US \$100,000 to \$249,999.



Arch Klumph Society Donor recognition levels are defined as follows:

Level One (Trustees Circle): US \$250,000 to \$499,999;
Level Two (Chair's Circle): US \$500,000 to \$999,999;
Level Three (Foundation Circle): US \$1 million to \$2,499,999;
Level Four: (Platinum Trustees Circle) – US \$2.5 million to \$4,999,999;
Level Five: (Platinum Chair's Circle) – US \$5 million to \$9,999,999;
Level Six: (Platinum Foundation Circle) - US \$10 million and above



Each Rotary Year, District 5170 Rotarians who -- early in their journey as Rotarians -- gave modest donations to The Rotary Foundation, make a personal decision to become Major Donors and supporters of The Rotary Foundation's Areas of Focus.

For more information about becoming a Major Donor or Arch Klumph Society Member, please contact:

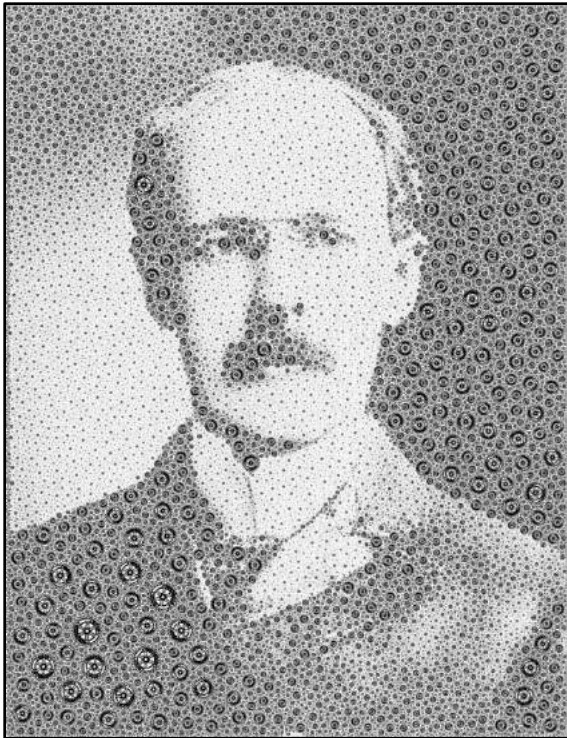
Pat McMenamin, Club Foundation Chair, Rotary Club of Livermore

D5170 TRF Major Donor, Chair

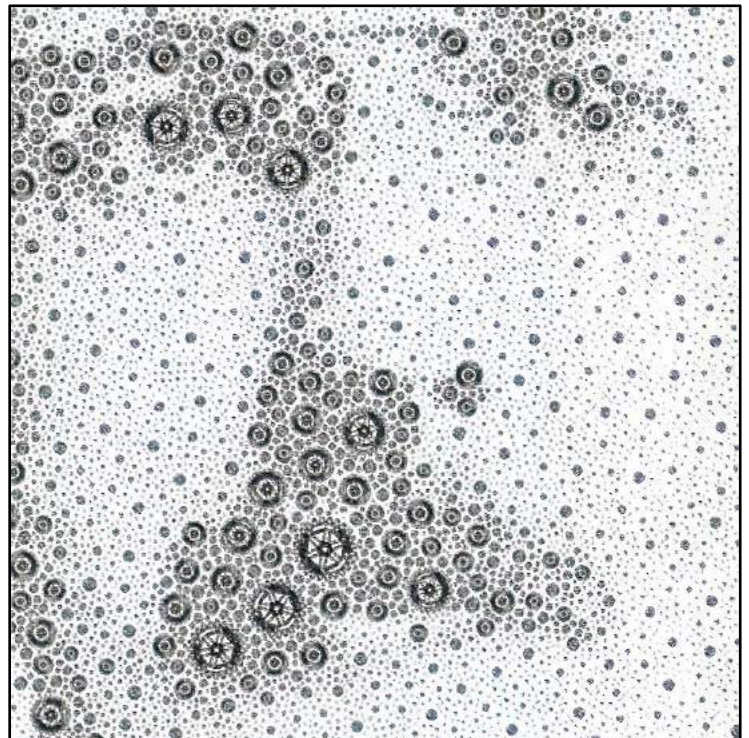
text/phone: 925-980-6881

pjmcmenamin@mac.com

JUST FOR FUN



Believe it or not, this portrait of Rotary founder Paul P. Harris is made up exclusively of tens of thousands of Rotary wheels of various sizes.



Blow-up of eyes, nose, and moustache.

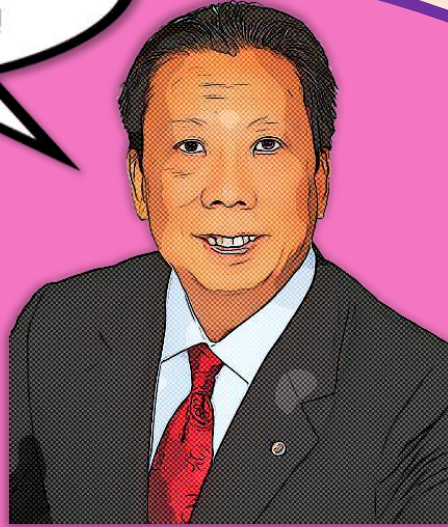


Can these 10 stairs exist in the real world? (Uh, no.)

Do you want to know which Global Grants our District 5170 clubs are working on, and see the project descriptions? If “yes,” just click [HERE](#)

Please support our
Rotary Foundation. Its
a good thing to do!

*District Governor
Richard Flanders says:*



Around the Clubs

Your fellow Rotarians would love to hear about any local or international projects in which your club, group of clubs, or area, participated in or is working on, funded in whole or in part by The Rotary Foundation or your club's DDF. If you might be interested in submitting an article for our “Around the Clubs” feature, please let me know. (Project-related photos are very welcome.)

Ed Jellen, Editor,
TRF News Today;
EdJellen@Gmail.com

Monthly Contribution Report

(Based on what RI has posted as of Sept. 10, 2021)

| Name | Mbrs | 1 July 21 | EREY | % EREY | Annual Fund Goal | Annual Fund YTD | Annual Fund % | Annual Fund Per Capita | Other YTD | Endow YTD | - Total - |
|-------------------------------------|--------------|-----------|------|--------|------------------|-----------------|---------------|------------------------|-----------------|------------------|--------------------|
| Alameda | 63 | | 4 | 6% | \$0 | \$1,595 | 0% | \$25.32 | \$0 | \$0 | \$1,595 |
| Almaden Valley | 16 | | 1 | 7% | \$4,000 | \$200 | 5% | \$12.50 | \$0 | \$0 | \$200 |
| Campbell | 26 | | 2 | 8% | \$5,000 | \$1,200 | 24% | \$46.15 | \$0 | \$0 | \$1,200 |
| Capitola-Aptos | 50 | | 0 | 0% | \$10,000 | \$0 | 0% | \$0.00 | \$0 | \$0 | \$0 |
| Castro Valley | 50 | | 0 | 0% | \$10,000 | \$0 | 0% | \$0.00 | \$5,050 | \$0 | \$5,050 |
| Cupertino | 203 | | 7 | 3% | \$60,000 | \$2,300 | 4% | \$11.33 | \$0 | \$0 | \$2,300 |
| Dublin | 43 | | 9 | 21% | \$12,000 | \$2,820 | 24% | \$65.59 | \$225 | \$0 | \$3,045 |
| East Palo Alto Bayshore | 20 | | 0 | 0% | \$5,000 | \$0 | 0% | \$0.00 | \$0 | \$0 | \$0 |
| E-Club of Silicon Valley | 57 | | 11 | 20% | \$0 | \$2,152 | 0% | \$37.75 | \$430 | \$0 | \$2,582 |
| E-Club Silicon Valley Smart Village | 48 | | | 0% | \$2,000 | \$0 | 0% | \$0.00 | \$0 | \$0 | \$0 |
| Evergreen Valley, San Jose | 12 | | 0 | 0% | \$0 | \$0 | 0% | \$0.00 | \$0 | \$0 | \$0 |
| Freedom | 19 | | 1 | 6% | \$3,000 | \$100 | 3% | \$5.26 | \$0 | \$0 | \$100 |
| Fremont | 34 | | 14 | 41% | \$12,500 | \$7,900 | 63% | \$232.35 | \$625 | \$0 | \$8,525 |
| Fremont Bridge | 17 | | 0 | 0% | \$0 | \$0 | 0% | \$0.00 | \$0 | \$0 | \$0 |
| Fremont Morning | 19 | | 0 | 0% | \$7,000 | \$250 | 4% | \$13.16 | \$0 | \$743.695 | \$743.945 |
| Fremont-Union City-Newark Sunrise | 15 | | 3 | 20% | \$1,500 | \$130 | 9% | \$8.67 | \$0 | \$0 | \$130 |
| Gilroy | 107 | | 12 | 11% | \$17,500 | \$4,010 | 23% | \$37.48 | \$1,000 | \$0 | \$5,010 |
| Gilroy After Hours | 30 | | 2 | 7% | \$1,200 | \$150 | 13% | \$5.00 | \$0 | \$0 | \$150 |
| Gilroy Sunrise | 19 | | 3 | 16% | \$2,500 | \$670 | 27% | \$35.26 | \$0 | \$0 | \$670 |
| Hayward | 59 | | 2 | 3% | \$0 | \$380 | 0% | \$6.44 | \$300 | \$0 | \$680 |
| Hollister | 62 | | 0 | 0% | \$7,500 | \$0 | 0% | \$0.00 | \$0 | \$0 | \$0 |
| HuaRen in Silicon Valley | 15 | | 0 | 0% | \$1,500 | \$0 | 0% | \$0.00 | \$0 | \$0 | \$0 |
| Livermore | 105 | | 17 | 17% | \$31,500 | \$8,558 | 27% | \$81.50 | \$1,070 | \$186.879 | \$186.507 |
| Livermore Valley, The | 41 | | 3 | 7% | \$0 | \$1,135 | 0% | \$27.68 | \$50 | \$0 | \$1,185 |
| Los Altos | 161 | | 3 | 2% | \$44,000 | \$1,669 | 4% | \$10.37 | \$0 | \$0 | \$1,669 |
| Los Altos Sunset | 7 | | 0 | 0% | \$1,600 | \$0 | 0% | \$0.00 | \$0 | \$0 | \$0 |
| Los Gatos | 118 | | 31 | 27% | \$0 | \$7,970 | 0% | \$67.54 | \$8,480 | \$0 | \$16,450 |
| Los Gatos Morning | 42 | | 10 | 25% | \$15,000 | \$1,995 | 13% | \$47.50 | \$100 | \$0 | \$2,095 |
| Milpitas | 32 | | 1 | 3% | \$0 | \$2,000 | 0% | \$62.50 | \$0 | \$0 | \$2,000 |
| Mission San Jose | 15 | | 4 | 27% | \$2,500 | \$1,250 | 50% | \$83.33 | \$50 | \$0 | \$1,300 |
| Morgan Hill | 109 | | 48 | 45% | \$32,000 | \$11,880 | 37% | \$108.99 | \$1,000 | \$0 | \$12,880 |
| Mountain View | 30 | | 2 | 7% | \$8,000 | \$1,050 | 13% | \$35.00 | \$0 | \$0 | \$1,050 |
| Newark | 41 | | 12 | 29% | \$1,250 | \$2,240 | 179% | \$54.63 | \$210 | \$0 | \$2,450 |
| Niles (Fremont) | 96 | | 10 | 11% | \$27,000 | \$2,880 | 11% | \$29.79 | \$1,816 | \$0 | \$4,676 |
| Oakland | 271 | | 5 | 2% | \$90,000 | \$953 | 1% | \$3.52 | \$125 | \$0 | \$1,078 |
| Oakland Uptown | 11 | | 2 | 18% | \$4,000 | \$250 | 6% | \$22.73 | \$0 | \$0 | \$250 |
| Palo Alto | 127 | | 3 | 2% | \$23,000 | \$500 | 2% | \$3.94 | \$0 | \$0 | \$500 |
| Palo Alto/University | 109 | | 6 | 6% | \$24,000 | \$7,319 | 30% | \$67.15 | \$0 | \$0 | \$7,319 |
| Piedmont-Montclair | 15 | | 1 | 7% | \$0 | \$200 | 0% | \$13.33 | \$0 | \$0 | \$200 |
| Pleasanton | 70 | | 0 | 0% | \$0 | \$20 | 0% | \$0.29 | \$250 | \$0 | \$270 |
| Pleasanton, Dublin, Livermore | 12 | | 0 | 0% | \$2,500 | \$0 | 0% | \$0.00 | \$0 | \$0 | \$0 |
| Pleasanton North | 60 | | 4 | 7% | \$0 | \$4,220 | 0% | \$70.33 | \$1,100 | \$0 | \$5,320 |
| San Jose | 431 | | 0 | 0% | \$35,000 | \$0 | 0% | \$0.00 | \$0 | \$0 | \$0 |
| San Jose East-Evergreen | 21 | | 2 | 10% | \$0 | \$300 | 0% | \$14.29 | \$0 | \$0 | \$300 |
| San Jose Silicon Valley | 16 | | 2 | 13% | \$15,000 | \$420 | 3% | \$26.25 | \$0 | \$0 | \$420 |
| San Juan Bautista | 30 | | 1 | 3% | \$4,000 | \$200 | 5% | \$6.67 | \$0 | \$0 | \$200 |
| San Leandro | 41 | | 3 | 7% | \$17,500 | \$550 | 3% | \$13.41 | \$0 | \$0 | \$550 |
| San Lorenzo Valley (Felton) | 38 | | 3 | 8% | \$6,500 | \$1,000 | 15% | \$26.32 | \$0 | \$0 | \$1,000 |
| Santa Clara | 65 | | 1 | 2% | \$8,500 | \$250 | 3% | \$3.85 | \$50 | \$0 | \$300 |
| Santa Cruz | 112 | | 0 | 0% | \$0 | \$0 | 0% | \$0.00 | \$0 | \$0 | \$0 |
| Santa Cruz Sunrise | 101 | | 6 | 6% | \$0 | \$1,917 | 0% | \$18.98 | \$730 | \$0 | \$2,647 |
| Saratoga | 87 | | 4 | 5% | \$27,000 | \$2,325 | 9% | \$26.72 | \$2,015 | \$0 | \$4,340 |
| Scotts Valley | 17 | | 1 | 6% | \$3,800 | \$200 | 5% | \$11.76 | \$400 | \$0 | \$600 |
| Silicon Valley | 202 | | 1 | 0% | \$1,000 | \$250 | 25% | \$1.24 | \$250 | \$0 | \$500 |
| Silicon Valley For Global Impact | 60 | | 0 | 0% | \$0 | \$0 | 0% | \$0.00 | \$0 | \$0 | \$0 |
| Silicon Valley Passport | 52 | | 3 | 6% | \$0 | \$325 | 0% | \$6.25 | \$0 | \$0 | \$325 |
| Silicon Valley Rainbow | 16 | | 1 | 7% | \$2,000 | \$200 | 10% | \$12.50 | \$0 | \$0 | \$200 |
| Silicon Valley Star (Sunnyvale) | 16 | | 1 | 6% | \$1,600 | \$50 | 3% | \$3.13 | \$0 | \$0 | \$50 |
| Sunnyvale | 54 | | 0 | 0% | \$10,000 | \$0 | 0% | \$0.00 | \$0 | \$0 | \$0 |
| Sunnyvale Sunrise | 9 | | 1 | 11% | \$1,800 | \$1,000 | 56% | \$111.11 | \$0 | \$0 | \$1,000 |
| Watsonville | 69 | | 5 | 7% | \$0 | \$850 | 0% | \$12.32 | \$100 | \$0 | \$950 |
| Totals | 3,893 | | | | \$602,250 | \$89,764 | 7% | \$1,627 | \$25,426 | \$930,573 | \$1,045,764 |
| Signifies highest in category | | | | | | | | | | | |

Key to headings:

EREY – Every Rotarian Every Year – Number of club members who made a donation this Rotary year

EREY% - Percent of club members who contributed in the current year (EREY/Number of members)

AF – Annual Fund

Other YTD – Other funds donated (apart from AF) such as PolioPlus

Endow YTD – Total funds donated to the Endowment Fund up to the current date. (Cash donations, but not legacy giving.)



ROTARY TRIVIA

Trivia Question No. 1:

R.I.'s board of directors has 15 members (not counting R.I. officers). How many of them are Rotarians from the U.S.A.:

- (a) two;
- (b) three;
- (c) four;
- (d) five; or
- (e) six?

Trivia Question No. 2:

When and where was Rotary's first Interact Club organized:

- (a) 1942, in Champaign, Illinois;
- (b) 1952, in Ottawa, Ontario;
- (c) 1962, in Melbourne, Florida;
- (d) 1972, in Santa Monica, California; or
- (e) 1982, in Sydney, Australia?

Trivia Question No. 3:

This is a web-page welcome message from which Rotary Club: 국제로타리 3650지구에 오신것을 환영합니다:

- (a) Rotary Club of Taipei, Taiwan;
- (b) Rotary Club of Fukuoka, Japan;
- (c) Rotary Club of Shanghai, China;
- (d) Rotary Club of Ishigaki-Okinawa-Japan; or
- (e) Rotary Club of Seoul, South Korea?

Answers on last page of this newsletter

Can you Identify
this famous
Rotarian?



(Answer on last page.)

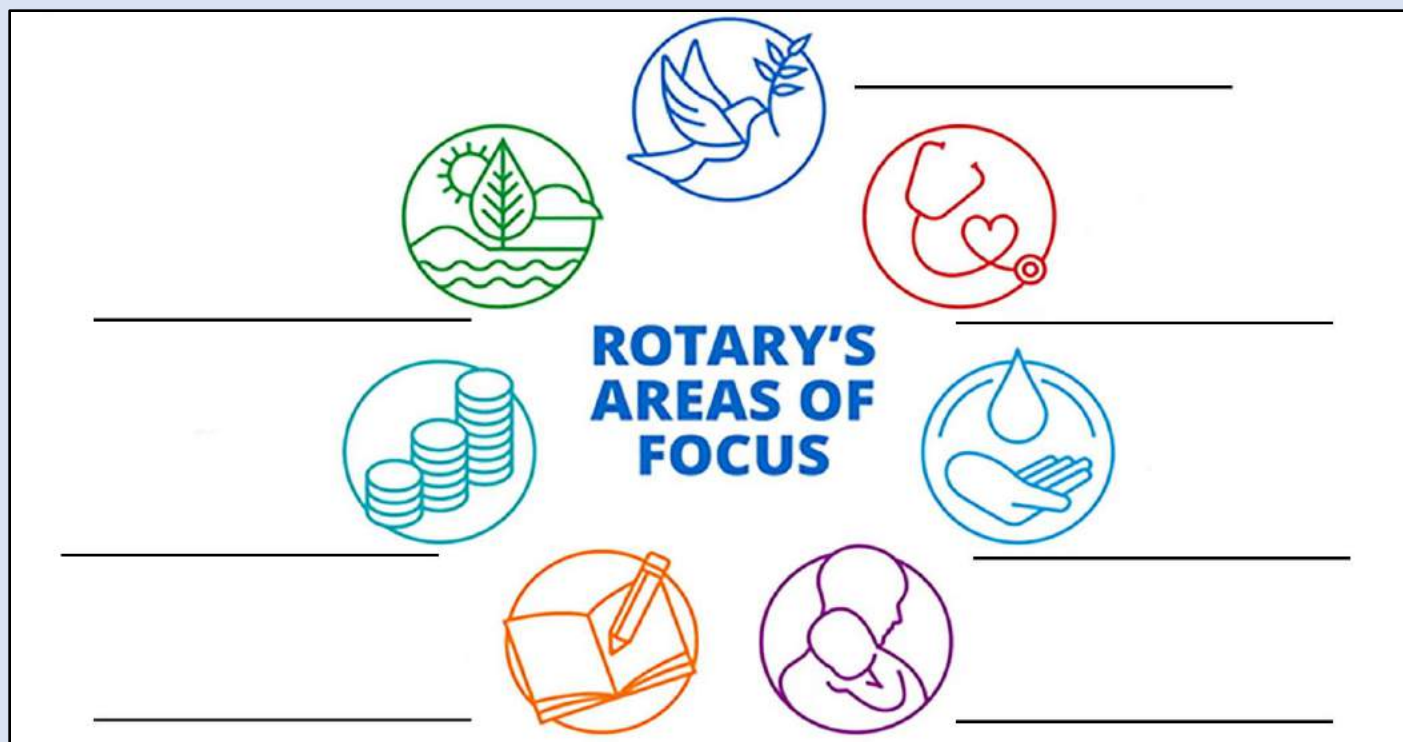
TRF NEWS TODAY

Did you know ...
That past
issues* of TRF
News Today are
available?

Just click [HERE](#)

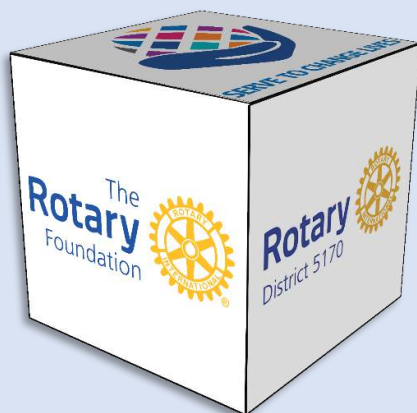
*With lots of good stuff, such as news about club TRF projects in District 5170; stats, puzzles, Rotary trivia; and helpful information about the Paul Harris Society, major donors, Triple Crown Donors, Annual Giving, and of course, The Rotary Foundation.

Can You Identify Rotary's Seven Areas of Focus?

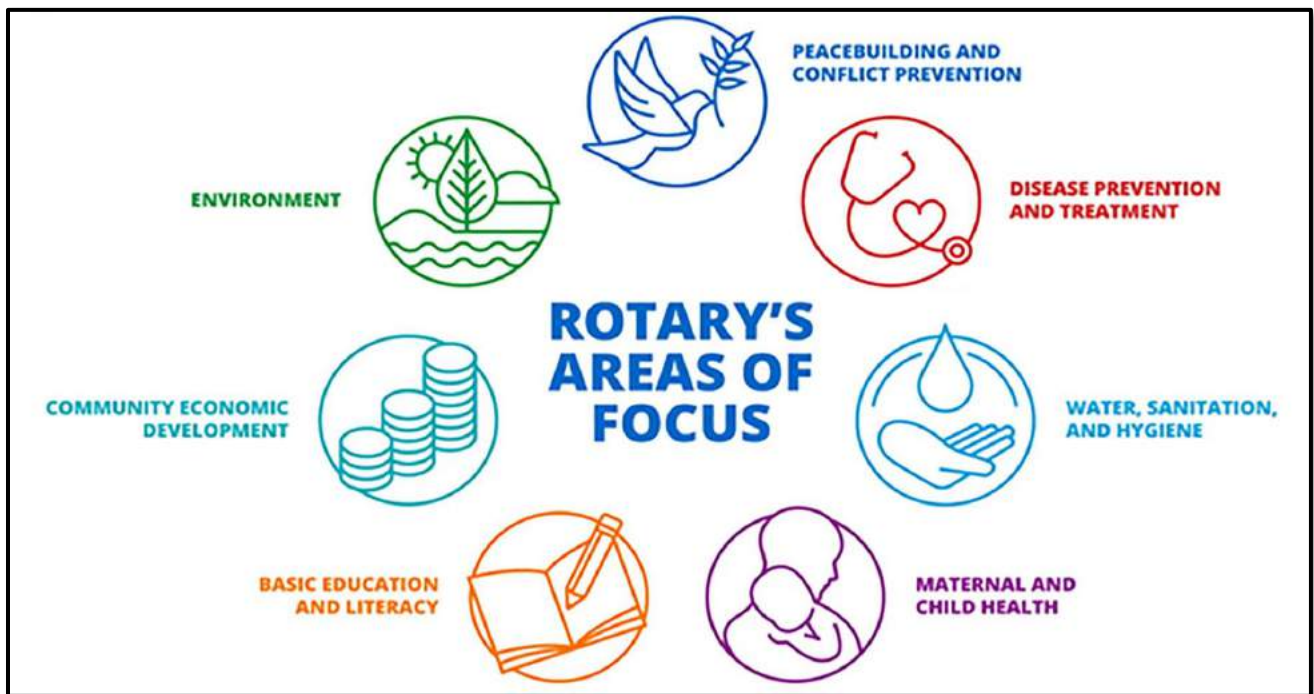


Rotary has identified seven areas of focus that reflect critical humanitarian issues and needs. By focusing our efforts on these causes, we're able to make a greater impact locally and globally.

In support of these areas of focus, Rotary has adopted the above symbols. How many of them can you identify?



(Answer on Next Page)



SEPTEMBER

The famous Rotarian pictured is Gerald R. Ford, who served as 38th President of the United States, and a member of the Rotary Club of Grand Rapids, Michigan.

Answer to trivia question no. 1: (c) Four of R.I.'s 15 directors are Rotarians from the U.S.A.

Answer to trivia question no. 2: (c) Rotary's first Interact Club was organized in Melbourne, Florida in 1962.

Answer to trivia question no. 3: (e) The web-page welcome message is from the Rotary Club of Seoul, South Korea.