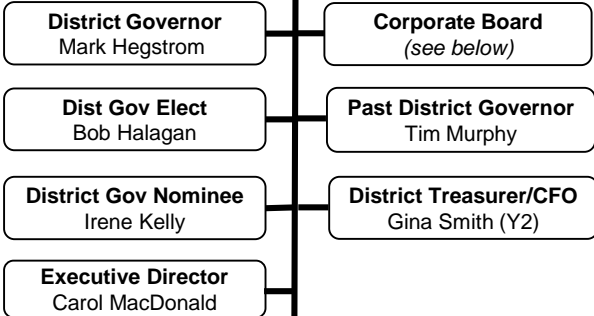




2016-17 District 5950 Leadership

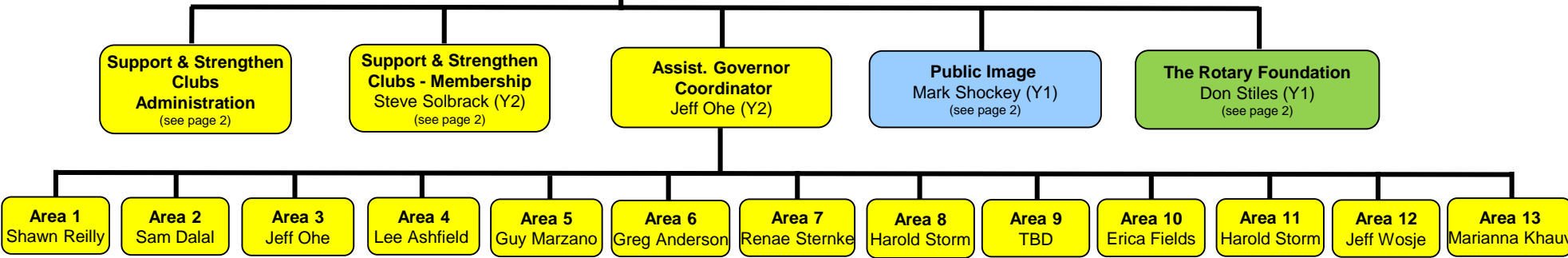
DG Advisor
Sandy Schley

Rotary Int'l
District 5950



RI 's Strategic Areas of Focus

- Support & Strengthen Clubs
- Focus & Increase Humanitarian Service
- Enhance Public Image & Awareness



District 5950 Corporate Board

Mark Hegstrom, DG	Tim Murphy, PDG	Mary Ann Nelson, Mpls #9, Lg Clubs	Gina Smith (CFO)
Bob Halagan, DGE	Jim Nelson, PDG	Dan Carlson, Monticello, Med Clubs	Jennifer Bennerotte (Secretary)
Irene Kelly, DGN	Diann Kirby, PDG	Melanie Deluca, Orono, Sm Clubs	Wooj Byun (Legal -non voting)
Carol MacDonald (Exec Director – non voting)			

District 5950 Representatives:

NorthStar Youth Exchange

Board Members

- Mark Hegstrom, DG
- Cathy Smith
- Tom Gump
- Bob Halagan, DGE
- Patrick Joyce
- Irene Kelly, DGN

District 5950 Contact info

Carol MacDonald, 5950 Executive Director
email preferred: Carol@rotary5950.org; (763) 553-1604 office;



District Leadership FY2016-17

Page 2

RI 's Strategic Areas of Focus

- Support & Strengthen Clubs
- Focus & Increase Humanitarian Service
- Enhance Public Image & Awareness

