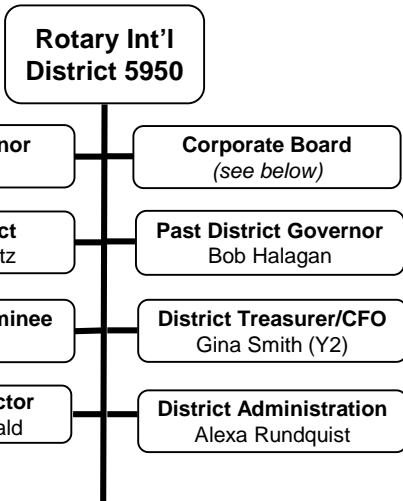


2018-19 District 5950 Leadership

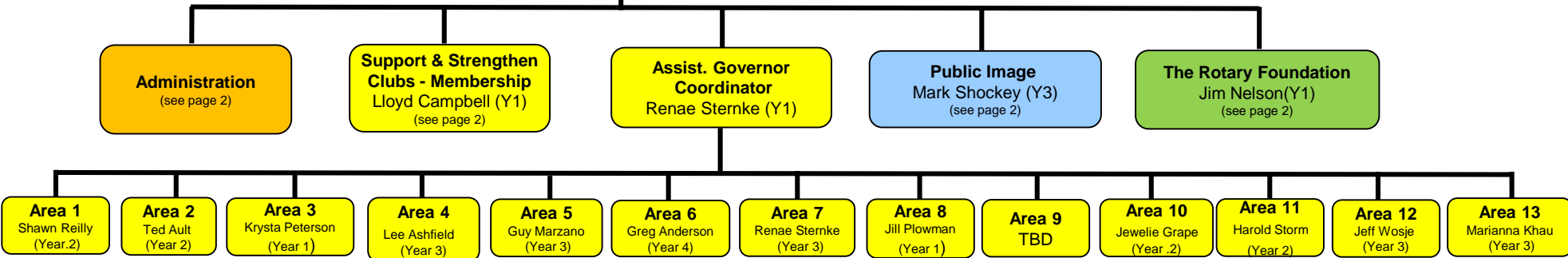


RI 's Strategic Areas of Focus

- Support & Strengthen Clubs
- Focus & Increase Humanitarian Service
- Enhance Public Image & Awareness

DG Advisor
Sandy Schley
Tim Murphy

Council On Legislation Rep 2017-20
Jim Nelson, PDG



District 5950 Corporate Board

Irene Kelly, DG | Mark Hegstrom, PDG | Mary Ann Nelson, Mpls #9, Lg Clubs | Gina Smith (CFO)
 Rus Michaletz, DGE | Tim Murphy, PDG | Dan Carlson, Monticello, Med Clubs | Jennifer Bennerotte (Secretary)
 Tom Gump, DGN | Bob Halagan, PDG | Melanie Deluca, Orono, Sm Clubs | Mike Kallas (*Legal -non voting*)
 Carol MacDonald (*Exec Director – non voting*)

District 5950 Contact info

Carol MacDonald, 5950 Executive Director carol@rotary5950.org
 Alexa Rundquist, District Administration alexa@rotary5950.org
 Office phone: (763) 553-1604

District 5950 Representatives:

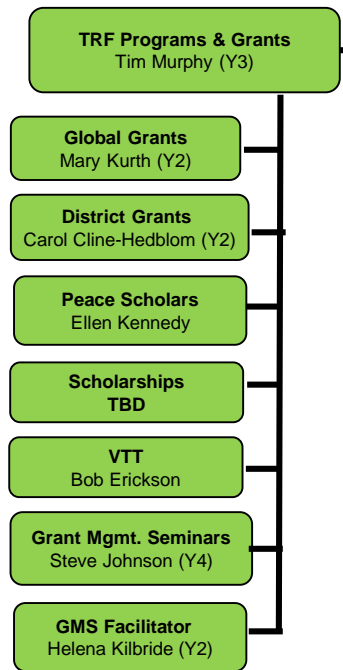
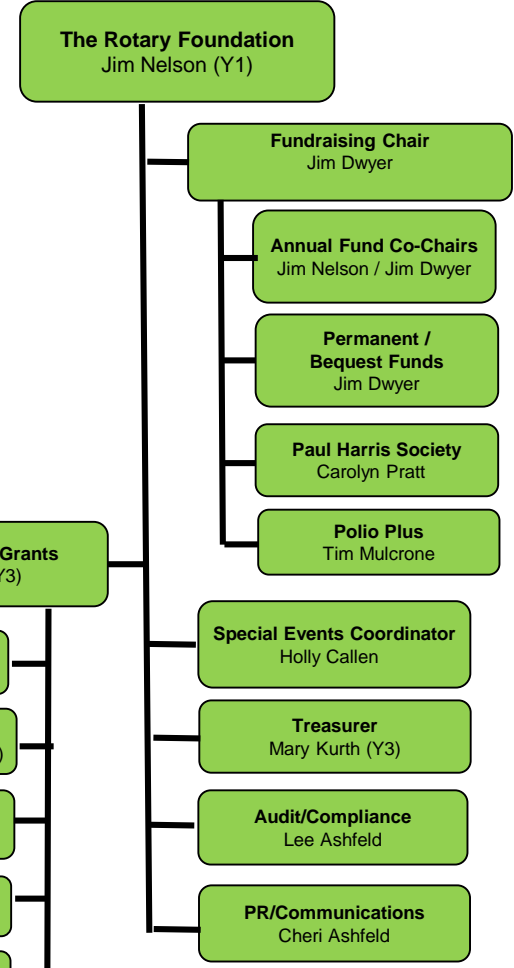
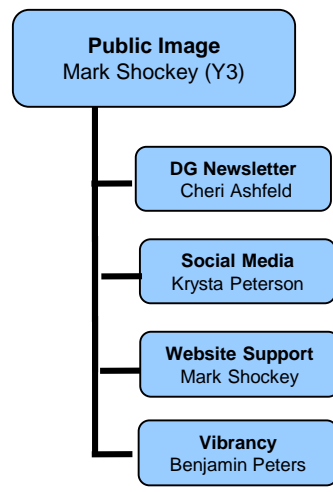
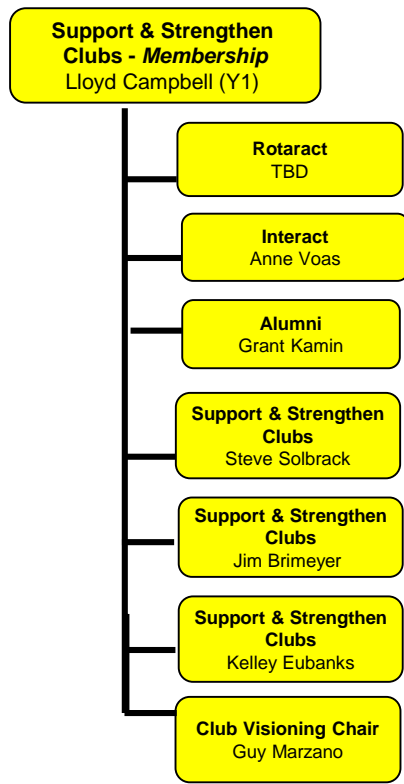
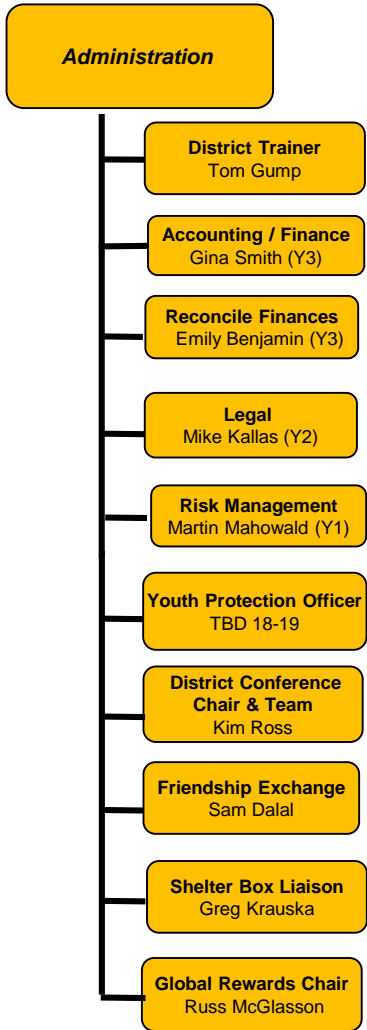
NorthStar Youth Exchange

Board Members

- Irene Kelly , DG
- Russ Michaletz, DGE
- Tom Gump, DGN
- Patrick Joyce
- Leif Hagen
- Jane McGinty

RI 's Strategic Areas of Focus

- Support & Strengthen Clubs/Membership
- Focus & Increase Humanitarian Service
- Enhance Public Image & Awareness



RI's Strategic Areas of Focus

- Support & Strengthen Clubs
- Focus & Increase Humanitarian Service
- Enhance Public Image & Awareness

District Leadership FY2018-19
Page 3

