



*“Native American Indians used plants for food, shelter, medicine, ceremonies and clothing”.*

## MALISEET PROJECT COMMITTEE

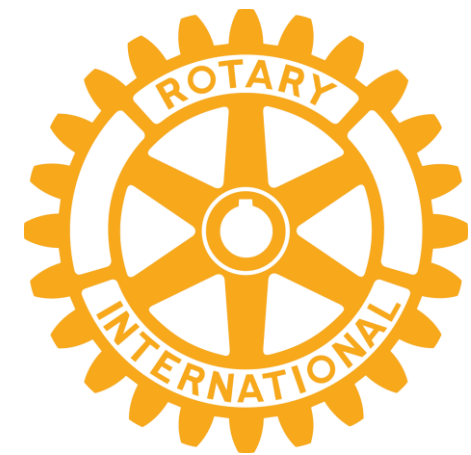
RICH CAMPBELL – PORTLAND

CHRIS HAMILTON – DAMARISCOTTA – NEWCASTLE

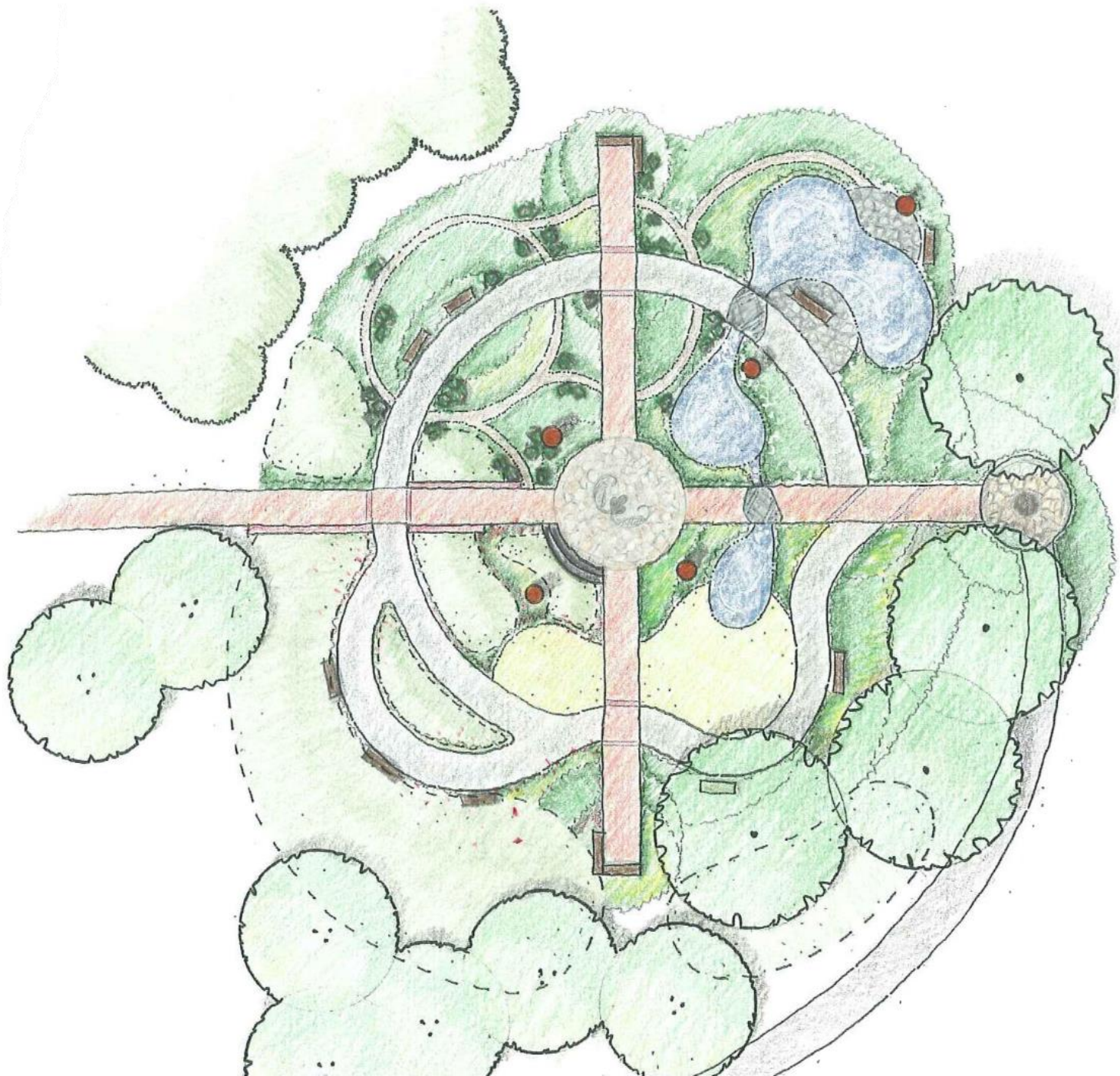
GEORGE KLAUBER – BRIDGETON LAKES REGION

BRENDA POLLOCK – BIDDEFORD-SACO

SUSAN YOUNG – HOULTON BAND OF MALISEETS







---

## Committee Project Focus

- The Houlton band of Maliseet Indian's Medicine Wheel Healing Garden Project

*Today, Native Americans frequently combine traditional healing practices with allopathic medicine to promote health and wellbeing. Ceremony, native herbal remedies, and allopathic medications are used side by side.*



# PROJECT TIMELINE

Hire CA to meet on site with HBMI & Rotary team to review and confirm project elements.

Identify partners.

Band with Biddeford-Saco Rotary Club.

Begin fundraising efforts.

Rotary team and allies meet with Maliseet Community and local partners.

Complete schematic design and desired changes to existing plan.

Finalize surface materials, site furnishings, lighting cost improvements.

Official groundbreaking.

Phase one of project.

Site demolition, removal plan, layout design, grading and drainage improvements, utilities and lighting plans.

CA will develop a more detailed schematic site plan and possibly with 3D representations.

Phase two of project.

Site construction details and assemblies.

Identify type, quantity, size of plant materials including trees, shrubs, and groundcovers.

Phase three of project.

Complete construction, identify volunteer projects, preparation of project maintenance manual and operational requirements.

Launch educational & wellness mission.

Winter 2022

Spring 2022

Summer 2022

Fall 2022

Summer 2023



# Houlton Maliseet Medicine Wheel Healing Garden Project

**Learning about culture & sustainable harvesting of native plants & indigenous knowledge.**

- Healing Garden adjacent to the Maliseet Health Center
- Initial Design completed & approved.
- Estimated cost: \$150,000

