

DISCON TOUR PACKAGES

OFFERED BY; MJ SAFARIS UGANDA & SUNSET ADVENTURES



Sunset adventures:
+256 784 455 330
Email: safaris@thesunsetadventures.com



mj safaris uganda:
+256 702 995 565 / +256 772 995 565
Email: info@mjsafarisuganda.com

STARTING IN JINJA

WATER RAFTING & TUBING ON THE NILE

WATER RAFTING

220,000/= PER PERSON

(Transport, Photography, Lunch,
Fruits & Refreshments)
(12PAXS AND ABOVE)

TUBING ON THE NILE

80,000/= PER PERSON

(Transport & Activity)
(12PAXS AND ABOVE)

BUSOWOKO & ITANDA FALLS

Families worldwide visit Busowoko falls Uganda and enjoy the water massage point. It is one of the falls you should visit if you are exploring Jinja or simply holidaying.

60,000/= PER PERSON

(Transport, Entrance & Activity)
(10PAX AND ABOVE)

BUNGEE JUMPING OR QUAD BIKING

Jinja is well known for Bungee Jumping, an adrenaline pumping experience where you plunge yourself 43 meters down into open space before partly immersing yourself into the Nile water at the Nile High Bungee. Bungee jumping is an activity much loved by those who want to test the limits of their adventure spirits.

QUAD BIKING (PER PERSON)

1 HOUR - 190,000/=

30 MINUTES - 100,000/=

(Transport, and Activity)
(10PAXS AND ABOVE)

BUNGEE JUMPING

180,000/= PER PERSON

(Transport, Photography & Activity)
(10PAXS AND ABOVE)

THE UGANDA RAILWAY MUSEUM

The Uganda Railway Museum is a national railway museum located along the Jinja-Iganga Highway at the Railway Station in Jinja City. Constructed in 1928, Jinja Railway Station is one of Jinja's oldest, historical buildings.

30,000/= PER PERSON

(Transport, Entrance, Cruise, & Drink)
(10 PAX AND ABOVE)





SOURCE OF THE NILE BOAT CRUISE

Experience Tranquil River Nile Sundowner Cruise in Jinja -There's nothing quite like the enchantment of a sunset cruise, especially when it unfolds over the majestic River Nile Jinja. As the day comes to a close, picture yourself on a boat, surrounded by good company, relishing delicious food, and on ice-cold beer or a refreshing gin and tonic.

70,000/= PER PERSON (MAX 40 PAX)

(Transport, Entrance, Sunset Cruise, & Drink)

SOURCE OF THE NILE BOAT CRUISE

30,000/= PER PERSON

(Transport, Entrance, Cruise, & Drink)



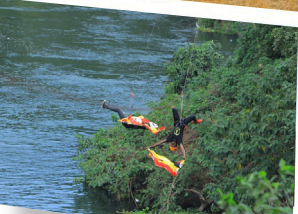
HORSE RIDING (PERSON BELOW 85KGS)

30MINUTES - 110,000/= PER PERSON

1 HOUR - 170,000/= PER PERSON

(Includes Transport & Activity)

(6PAX AND ABOVE)



ZIP LINING ON THE NILE

50,000/= (8PAX AND ABOVE)

(Transport & Activity)

Free Entrance Tours

Kyabazinga's Palace, Nile Breweries, Nalubaale Dam, Kakira Sugar Factory, Bujjagali Dam & Kiira Motors

3 DAYS BWINDI GORILLA TRACKING TOUR

Description

This tour is a fast and comfortable one to visit the rare mountain Gorillas of Bwindi. The journey is shortened by internal flight from Entebbe to Kihikihi or Kisoro. Clients are able to experience Gorillas and have a chance to tour communities around Bwindi national park. Itinerary

DAY 1

Arrival in Uganda.
Flight from Entebbe to Bwindi NP

Accommodation

Budget: Buhoma rest camp
www.buhomacommunityug.com

Mid-range: Engagi Lodge
<https://www.engagilodge.com>

High end: Buhoma Lodge
<https://buhoma.ugandaexclusivecamps.com>

Meal plan: Lunch, Dinner



DAY 2

Gorilla Tracking in Bwindi

Accommodation

Budget: Buhoma rest camp
www.buhomacommunityug.com

Mid-range: Engagi Lodge
<https://www.engagilodge.com>

High end: Buhoma Lodge
<https://buhoma.ugandaexclusivecamps.com>

Meal plan: Breakfast, Lunch, Dinner



DAY 3:

Drive to Kihikihi, flight to Entebbe
and departure

Meal plan: Breakfast



3 DAYS MURCHISON FALLS NATIONAL PARK TOUR



DAY 1

Drive to Murchison Falls NP
via Ziwa Rhinos sanctuary

Accommodation

Budget: Murchison River Lodge tents
<https://www.murchisonriverlodge.com>

Mid-range: Twiga Safari Lodge
<https://twigasafarilodge.com>

High end: Paraa Lodge
<https://paraalodge.com>

Meal plan: Lunch, Dinner

Description

The journey starts with a stopover at Ziwa Rhino sanctuary – the only home of Rhinos in Uganda. You will take a walk to the animals while learning the story of the sanctuary and about its aim of reintroducing the rhinos into the wild. Murchison Falls offers excellent game viewing through various activities that are included in the itinerary.



DAY 2

Game drive and Boat cruise in
Murchison Falls National Park

Accommodation

Budget: Murchison River Lodge tents
<https://www.murchisonriverlodge.com>

Mid-range: Twiga Safari Lodge
<https://twigasafarilodge.com>

High end: Paraa Lodge
<https://paraalodge.com>

Meal plan: Lunch, Dinner



DAY 3:

Morning chimpanzee tracking.
Drive back to Entebbe and
departure

Meal plan: Breakfast

FOR BOOKINGS & PAYEMENTS



Bank USD details.

BANK NAME: DIAMOND TRUST BANK UGANDA.
SWIFT CODE : DTKEUGKA
ACCOUNT NAME: MJ SAFARIS UGANDA LTD
ACCOUNT NO: 0116014001
BRANCH: SEETA TOWN MUKONO UGANDA

MJ SAFARIS UGANDA LTD UGX BANK DETAILS:

Account no. 1201794141117
Bank. Opportunity Bank Uganda
Branch: City Branch

Online card payment. <https://payments.pesapal.com/mjsafarisuganda>

Airtel Merchant Code.

6766057 MJ SAFARIS UGANDA

For the Kiira Motors tour contact:
chair transport:
0772995565/0702995565



SUNSET ADVENTURES UGX BANK DETAILS:

Bank Name: Equity Bank
Account No. 1001201443587
Account Name: Sunset Adventures Ltd

Airtel Pay Code: 1859# 641414
Names: Sunset Adventures Ltd

MTN MoMo Code: 1653# 566736
Names: Sunset Adventures Ltd

