



GLOBAL GRANTS TRAINING SEMINAR

Rotary District 5340

For Rotary year 2025-2026

A GUIDE TO GLOBAL GRANTS



My.Rotary.org



My Rot

1

My Rotary ▾

Participate ▲

Events & Connections ▾

Knowledge & Resources ▾

Who We Are ▾

Programs

Rotary Action Groups

Rotary Fellowships [↗](#)

Rotary Community Corps [↗](#)

Rotary Friendship
Exchanges [↗](#)

Interact [↗](#)

Rotary Youth Leadership
Awards [↗](#)

Rotary Youth Exchange [↗](#)

Grants

Grant Center [↗](#)

District Grants

Global Grants

Programs of Scale

Disaster Response Grants

2

Projects

Developing Projects

The Cadre

Rotary Showcase [↗](#)

Start a Club

Support Our Foundation

Annual Fund

End Polio [↗](#)

Raise for Rotary [↗](#)

Rotary Direct

Ways to Give [↗](#)

Endowment Fund [↗](#)

Rotary Peace Centers



District Number: 5340

District Status:  Qualified

RESOURCES



Rotary Grant Center

Welcome to Rotary grants! As Rotary members, we contribute our skills, expertise, and resources to solve some of the world's most serious problems. From providing clean water in local communities to promoting peace worldwide, Rotary grants can bring your project ideas to life.

Use the Grant Center to apply for a grant. track its progress. report on it. and search for other

Rotary Grant Center

Welcome to Rotary grants! As Rotary members, we contribute resources to solve some of the world's most serious problems in local communities to promoting peace worldwide, Rotary ideas to life.

Use the Grant Center to apply for a grant, track its progress, and manage grants in your district.

Types of grants

The Rotary Foundation offers grants that support humanitarian and vocational training teams. Here's an overview:



GRANT RESOURCES

Questions about the grant process? We're here to help, from getting you started to final steps.

[Application Supplement for Microcredit Projects](#)

[Areas of Focus Policy Statements](#)

[Community Assessment Results](#)

[Cooperating Organization Memorandum of Understanding](#)

[Global Grant Application Template](#)

[Global Grant Calculator](#)

[Global Grant Lifecycle](#)

[Global Grant Monitoring and Evaluation Plan Supplement](#)

[Global Grant Report Template](#)

[Global Grant Scholarship Supplement](#)

[Grant Travel](#)

Types of grants

The Rotary Foundation offers grants that support humanitarian and vocational training teams. Here's an overview of the types of grants.

- ▶ **Global grants** support large international projects with one or more of Rotary's areas of focus. They range from \$100,000 to \$1,000,000.
- ▶ **District grants** fund smaller-scale, short-term projects in your community or abroad.

The lifecycle of a Rotary grant



[Global Grant Monitoring and Evaluation Plan Supplement](#)

[Global Grant Report Template](#)

[Global Grant Scholarship Supplement](#)

[Grant Travel](#)

[Guide to Global Grants](#)

[Guidelines for Rotary Foundation Funded Project Signage](#)

[How to Use the Grant Center](#)

[Report Supplement for Microcredit Projects](#)

[RI Exchange Rates](#)

[Rotary Grants Staff Contact Sheet](#)

[Six Steps to Sustainability](#)

[Terms and Conditions for Rotary Foundation District Grants and Global Grants](#)

[Training Plan for Global Grants](#)

[Vocational Training Team Itinerary](#)

[Vocational Training Team Member Application](#)

HOW TO USE THE GRANT CENTER

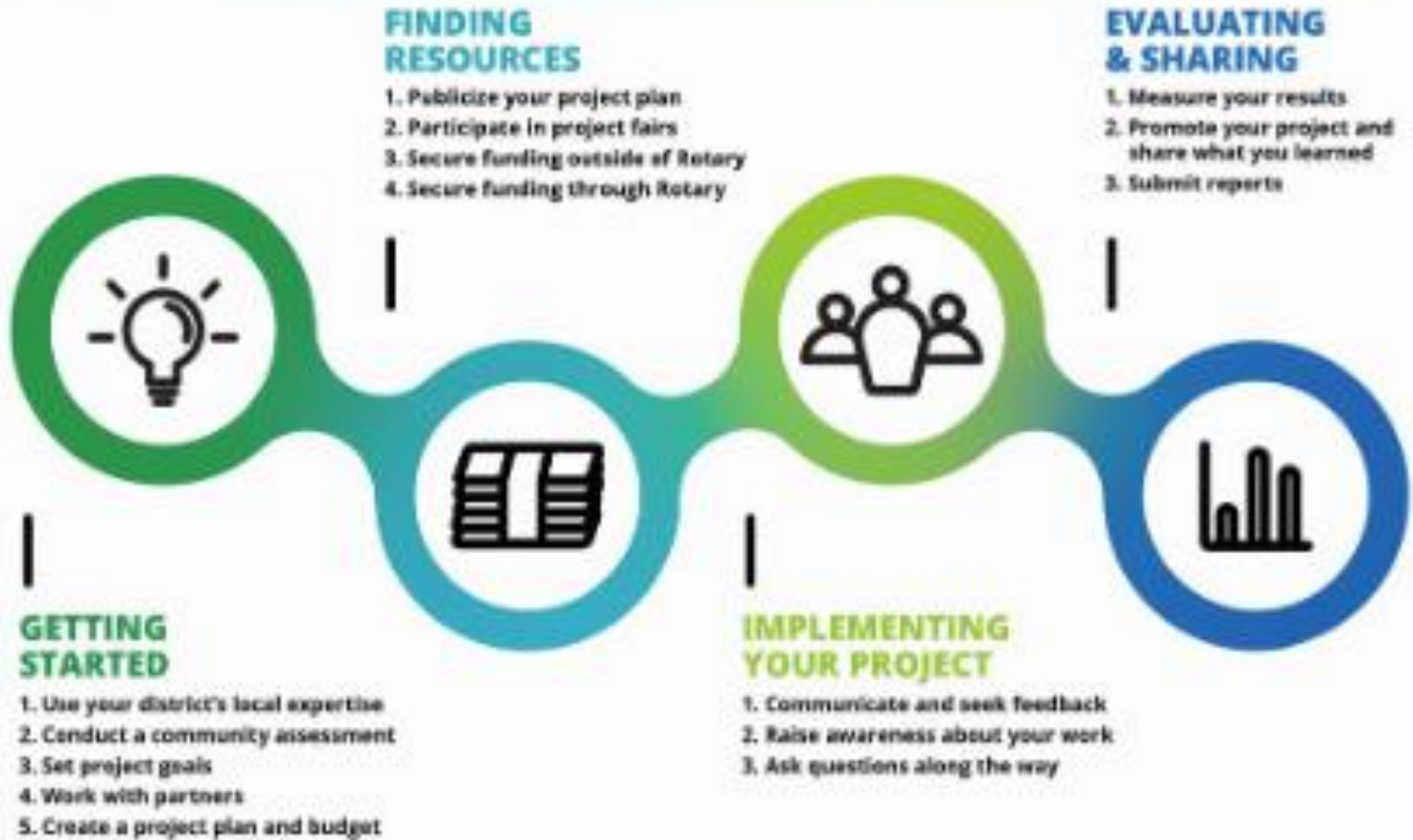


The Grant Center is the place to go for everything you need to do online for your Rotary Foundation grants, and it keeps all of Rotary's grant-related resources handy for you. This guide will show you how to:

- [Find the Grant Center](#)
- [Navigate the Grant Center](#)
- [Apply for a Global Grant](#)
- [Authorize a Global Grant Application \(Club Presidents and District Leaders\)](#)
- [Enter Global Grant Bank Account Information](#)
- [Report on a Global Grant](#)
- [Authorize a Global Grant Report](#)
- [Apply for a District Grant \(District Leaders Only\)](#)
- [Report on a District Grant \(District Leaders Only\)](#)

For general information about grants, go to Rotary.org's [Grants](#) page.

CULTIVATING EFFECTIVE PROJECTS



Go to YouTube.
Search “Rotary cultivating effective projects”
See videos 1-5.

GLOBAL GRANTS

- Large, long-term projects
- Sustainable, measurable outcomes
- Alignment with areas of focus
- International partnership



YOUR PROJECT MUST:

- ☒ Have a long-term, sustainable impact
- ☐ Include activities that align with the goals of one of Rotary's areas of focus
- ☐ Have a minimum budget of \$30,000
- ☐ Address an important need identified by the community
- ☐ Strengthen the community's capacity to address its own needs

SUSTAINABILITY OF PROJECTS IS IMPORTANT FACTOR IN TRF CONSIDERATION

Giving a community the skills and knowledge to maintain project outcomes for the long term, after grant funds have been expended.



SUSTAINABILITY

For Rotary, sustainability means providing long-term solutions to community problems that community members themselves can support after the grant funding ends.



Start with the community

Identify a need and develop a solution that builds on community strengths and aligns with local values and culture.



Encourage local ownership

Identify key community members who can help pioneer lasting improvements.



Provide training

A project's success depends on people.



Buy local

Purchase equipment and technology from local sources.



Find local funding

Get local funding through governments, hospitals, companies, and other organizations.



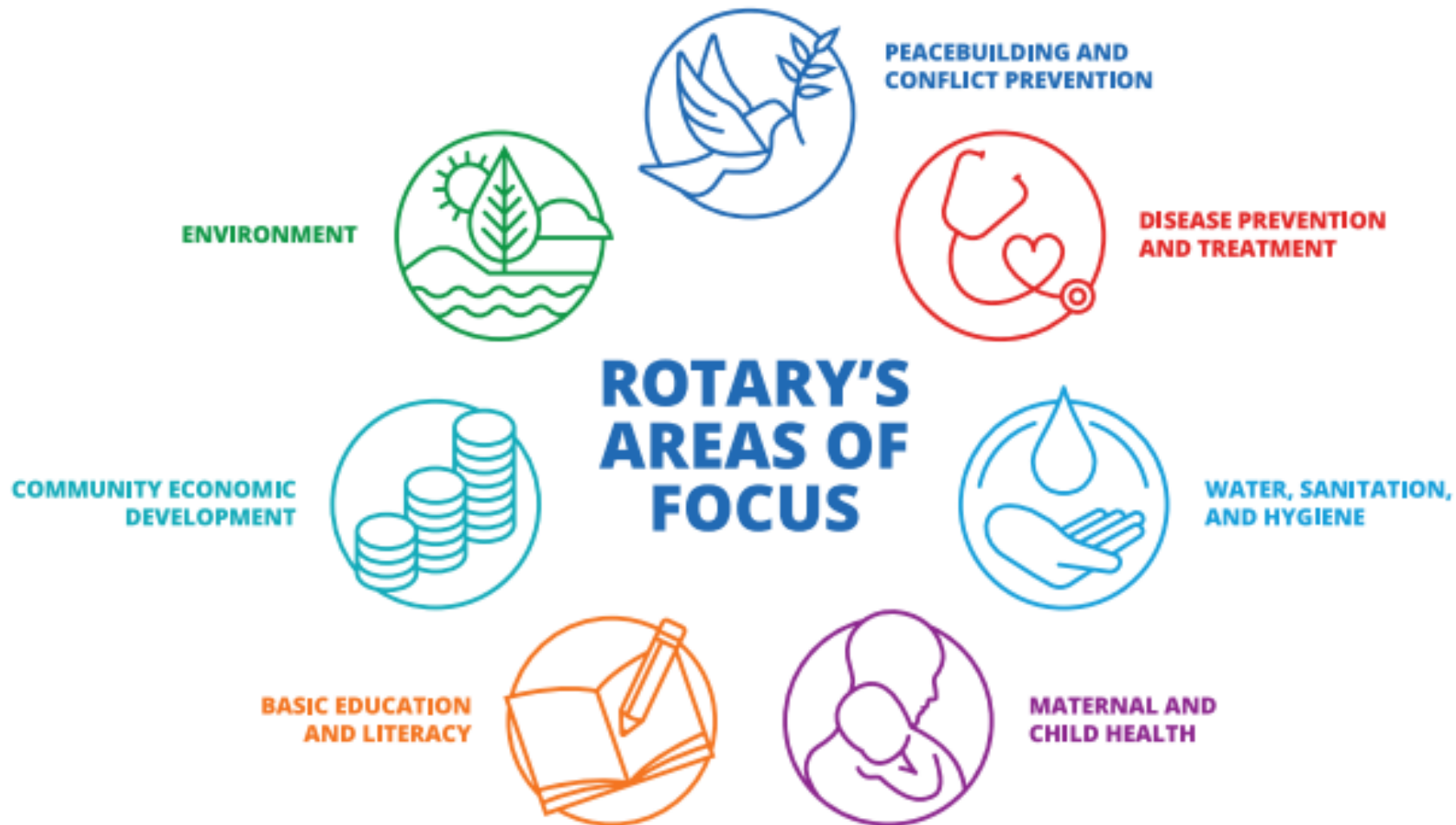
Measure your success

Develop clear and measurable project outcomes and determine how you will collect your data.



YOUR PROJECT MUST:

- ☐ Have a long-term, sustainable impact
- ☒ Include activities that align with the goals of one of Rotary's areas of focus
- ☐ Have a minimum budget of \$30,000
- ☐ Address an important need identified by the community
- ☐ Strengthen the community's capacity to address its own needs



Rotary Grant Center

Welcome to Rotary grants! As Rotary members, we contribute resources to solve some of the world's most serious problems in local communities to promoting peace worldwide, turning ideas to life.

Use the Grant Center to apply for a grant, track its progress, and manage grants in your district.

Types of grants

The Rotary Foundation offers grants that support humanitarian and vocational training teams. Here's an overview:



GRANT RESOURCES

Questions about the grant process? We're here to help, from getting you started to final steps.

[Application Supplement for Microcredit Projects](#)

[Areas of Focus Policy Statements](#)

[Community Assessment Results](#)

[Cooperating Organization Memorandum of Understanding](#)

[Global Grant Application Template](#)

[Global Grant Calculator](#)

[Global Grant Lifecycle](#)

[Global Grant Monitoring and Evaluation Plan Supplement](#)

[Global Grant Report Template](#)

[Global Grant Scholarship Supplement](#)

[Grant Travel](#)

MOST IMPORTANT BIT OF GRANT ADVICE

Only pick only **ONE** area of focus no matter how many areas of focus you think your project fits in to!

YOUR PROJECT MUST:

- ☐ Have a long-term, sustainable impact
- ☐ Include activities that align with the goals of one of Rotary's areas of focus
- ☒ Have a minimum budget of \$30,000
- ☐ Address an important need identified by the community
- ☐ Strengthen the community's capacity to address its own needs

GLOBAL GRANTS

- Are BIG!
 - \$30,000 minimum total budget
- World Fund match
 - No minimum
 - Maximum \$200,000 (without additional review)

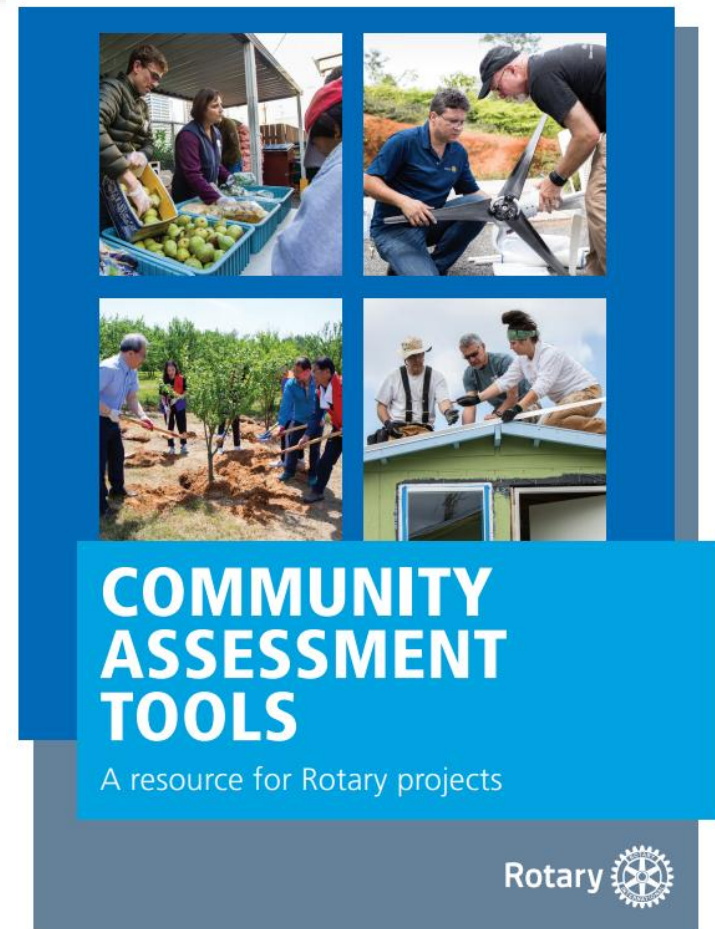


YOUR PROJECT MUST:

- ☐ Have a long-term, sustainable impact
- ☐ Include activities that align with the goals of one of Rotary's areas of focus
- ☐ Have a minimum budget of \$30,000
- ☒ Address an important need identified by the community
- ☒ Strengthen the community's capacity to address its own needs

COMMUNITY ASSESSMENT IS REQUIRED!

- Base projects on real needs
- Identify resources that your club and potential partners have
- Talk to the community



To find this search
“Rotary Community Assessment Tools”

METHODS USED FOR ASSESSMENT



Survey

Community meeting

Interview(s)

Focus group

Asset inventory

Community mapping

Other

District Number: 5340

District Status:  **Qualified**



Rotary Grant Center

Welcome to Rotary grants! As Rotary members, we contribute resources to solve some of the world's most serious problems in local communities to promoting peace worldwide, Rotary ideas to life.

Use the Grant Center to apply for a grant, track its progress, and manage grants in your district.

Types of grants

The Rotary Foundation offers grants that support humanitarian and vocational training teams. Here's an overview:



GRANT RESOURCES

Questions about the grant process? We're here to help, from getting you started to final steps.

[Application Supplement for Microcredit Projects](#)

[Areas of Focus Policy Statements](#)

[Community Assessment Results](#)

[Cooperating Organization Memorandum of Understanding](#)

[Global Grant Application Template](#)

[Global Grant Calculator](#)

[Global Grant Lifecycle](#)

[Global Grant Monitoring and Evaluation Plan Supplement](#)

[Global Grant Report Template](#)

[Global Grant Scholarship Supplement](#)

[Grant Travel](#)

YOU MUST:

- ☒ Qualify your club or district for global grants every year
- ☐ Actively involve the benefiting community in the project
- ☐ Partner with a club in another country
- ☒ Act as primary sponsor of no more than 10 active global grants at a time
- ☐ Develop a project plan that includes a budget and a financial management plan
- ☐ Apply for a grant through the Grant Center
- ☒ Stay up-to-date in reporting for all active grants

For humanitarian projects and those that involve vocational training teams:

- ☐ Conduct a community assessment before applying and include the results in your application
- ☐ Measure progress toward the outcome

CLUB QUALIFICATION

- 1. To qualify for global grant DDF, club must have achieved a minimum of \$100 per capita giving to the Annual Fund or a club total of at least \$20,000 for the 2024-2025 Rotary year.**
- 2. All District and RI dues must be up to date.**

CLUB QUALIFICATION

3. Two club members must attend this training and complete the assessment quiz.
4. TRF Memorandum of Understanding must be signed.
 - Signed by 2025-2026 & 2026-2027 presidents
 - Email signed form to PDG Mel Gallegos at melgallegos1819@gmail.com

To download MOU:

Go district web
site
rotary5340.org

The screenshot shows the homepage of the Rotary District 5340 website. The browser's address bar displays 'rotary5340.org'. The website header includes the Rotary logo and 'District 5340' on the left, and a navigation menu with links: 'About', 'Events', 'Clubs', 'Members', 'News', 'Service', 'Foundation', and 'Help'. A search bar and a 'Member Login' link are also present. A yellow callout bubble with the number '1' points to the 'Foundation' link in the navigation menu. Below the navigation menu, a dropdown menu is open, showing options: 'Donations', 'Grants', 'Paul Harris Grants', 'Fundraising', 'Resources & References', 'PolioPlus', 'District Foundation Committee', and 'Millions For HOPE'. A second yellow callout bubble with the number '2' points to the 'Grants' option in this dropdown menu. The background of the website features a scenic image of a coastal highway bridge over a beach and ocean.

GRANTS

[Guide to Grants](#)

[Grant Policies District 5340 - 2025-2026](#)

[Grant Policies District 5340 - 2024-2025](#)

Global Grants

[2024-25 Global Grants Seminar](#)

[2024-25 Global Grant Quiz](#)

[DDF Special Grant Project](#)

[Global Grants](#)

[Club Memorandum of Understanding \(PDF\)](#)

[Club Memorandum of Understanding Worksheet \(PDF\)](#)

[MatchingGrants.org - Global Grants](#)

[Rotary Grant Center](#)



WELCOME TO GRANTS

District Grants and Global Grants from The Rotary Foundation (TRF) are a wonderful way of getting your club involved in exciting and meaningful projects in your own community and/or with a Rotary Club in another country.

District Grants can leverage your club's cash (often doubling it!) for a project at a local or regional organization.

Global Grants are even more exciting. They usually involve partnering with a Rotary club in another country to a high

CLUB QUALIFICATION

5. All grant reporting must be up to date.
6. No more than 10 active global grants.
7. The club's Rotary Foundation giving goals for 2025-2026 must be entered by the club president (or elect).

YOU MUST:

- ☐ Qualify your club or district for global grants every year
- ☐ Actively involve the benefiting community in the project
- ☒ Partner with a club in another country
- ☐ Act as primary sponsor of no more than 10 active global grants at a time
- ☐ Develop a project plan that includes a budget and a financial management plan
- ☐ Apply for a grant through the Grant Center
- ☐ Stay up-to-date in reporting for all active grants

For humanitarian projects and those that involve vocational training teams:

- ☐ Conduct a community assessment before applying and include the results in your application
- ☐ Measure progress toward the outcome

GLOBAL GRANTS REQUIRE

- ❖ International partnership
 - ❖ Host
 - ❖ International Club
 - ❖ must contribute at least 15% of funding
 - ❖ Exceptions
 - ❖ Term gifts involved



HOW TO FIND ROTARY PARTNERS FOR GLOBAL GRANTS



Rotary Convention

Project fairs

LinkedIn

Facebook

Rotary events

www.matchinggrants.org/global

www.rotary.org/rotaryideas

YOUR GLOBAL GRANT “COMMITTEE”

- Both the Host and International Clubs must have:
 - Primary Contact
 - Two additional club members for the grant committee



YOU MUST:

- ☐ Qualify your club or district for global grants every year
- ☐ Actively involve the benefiting community in the project
- ☐ Partner with a club in another country
- ☐ Act as primary sponsor of no more than 10 active global grants at a time
- ☒ Develop a project plan that includes a budget and a financial management plan
- ☐ Apply for a grant through the Grant Center
- ☐ Stay up-to-date in reporting for all active grants

For humanitarian projects and those that involve vocational training teams:

- ☐ Conduct a community assessment before applying and include the results in your application
- ☐ Measure progress toward the outcome

DISTRICT 5340 GLOBAL GRANT RULES

Each Club eligible for up to \$10,000 in District Designated Funds (DDF) for 2025-2026 Rotary year.

Club cash contributions are matched 1:1 up to \$10,000.

DISTRICT 5340 GLOBAL GRANT RULES

- Clubs encouraged to work together to do bigger grants
 - No more than \$40,000 in DDF collectively for a single grant
- Grants must be fully pledged on MatchingGrants.org before DDF will be allocated for your project.
- Grants must comply with D5340 Youth Protection Policy (if applicable)

ROTARY FOUNDATION MATCHING FUNDS

- Cash donations by Clubs
 - No Rotary Foundation match
 - Note: 5% must be added to club cash contributions for administrative costs
(May be avoided by contributing directly to project account)
- District Designated Funds
 - Matched 80%

ROTARY FOUNDATION MATCHING FUNDS

- Example:
 - \$12,000 Clubs' cash
 - \$12,000 District Designated Funds (1:1 cash match)
 - TRF Match
 - \$9,600 for DDF (80% of \$12,000)
 - Total Funds for project -- \$33,600

Rotary Grant Center

Welcome to Rotary grants! As Rotary members, we contribute resources to solve some of the world's most serious problems in local communities to promoting peace worldwide, Rotary ideas to life.

Use the Grant Center to apply for a grant, track its progress, and manage grants in your district.

Types of grants

The Rotary Foundation offers grants that support humanitarian and vocational training teams. Here's an overview:



GRANT RESOURCES

Questions about the grant process? We're here to help, from getting you started to final steps.

[Application Supplement for Microcredit Projects](#)

[Areas of Focus Policy Statements](#)

[Community Assessment Results](#)

[Cooperating Organization Memorandum of Understanding](#)

[Global Grant Application Template](#)

[Global Grant Calculator](#)

[Global Grant Lifecycle](#)

[Global Grant Monitoring and Evaluation Plan Supplement](#)

[Global Grant Report Template](#)

[Global Grant Scholarship Supplement](#)

[Grant Travel](#)

Global Grant Financing Planner

Application #	GG2012345	Project Country	Utopia		
DDF (USD)	Cash Direct to Project (Equiv USD)	Cash through TRF (Equiv USD)			
		Project Cash	5%	Total to TRF	

1. Host Rotary Clubs/Districts

Rotary Club of ABC	\$ 5,000		\$ 5,000	\$ 250	\$ 5,250
Rotary Club of DEF			10,000	500	10,500
Rotary Club of GHI		10,000		-	-
				-	-
				-	-
				-	-
				-	-
				-	-
Total Host Contributions		\$ 5,000	\$ 10,000	\$ 15,000	\$ 30,000 75%

2. International Rotary Clubs/Districts

Rotary Club of UVW	\$ 6,000		\$ 3,000	\$ 150	\$ 3,150
Rotary Club of XYZ	1,000			-	-
				-	-
				-	-
				-	-
				-	-
				-	-
				-	-
				-	-
Total International Contributions		\$ 7,000	\$ -	\$ 3,000	\$ 10,000 25% ¹
		\$ 12,000	\$ 10,000	\$ 18,000	Total Rotarian Contributions \$ 40,000 100%

3. TRF World Fund match (80% of DDF)

\$ 9,600

World Fund match 9,600²

4. Endowed/Directed Gift

(5% NA)

-

Total Global Grant Funding \$ 49,600³

5. Other donors (unmatched)

			\$ -	\$ -
			-	-
			-	-
			-	-
Total Project Funding (must be equal to budget)			\$ 49,600	⁴

WHEN YOUR GRANT IS APPROVED.....

- **Project specific bank account** must be established.
- All cash must be sent to TRF or bank account.
 - 5% surcharge for funds sent to TRF – get Paul Harris credit
 - No surcharge if funds sent directly to project bank account
- TRF will wire funds to bank account, **including DDF.**

NOTE

(and answer to a very common question)

The DDF portion is never in the District's hands. We don't need to do anything once the grant is approved to transfer these funds to the project account. The Rotary Foundation does this directly.

Grant Management



Ensures that projects

- Have proper financial controls
- Adhere to technical standards
- Meet the needs of beneficiaries
- Fulfill their objectives
- Safeguard funds

Grant management and reporting is the responsibility of both the international and host grant committees.

Grant Management



Document ALL expenditures

- Save all receipts and invoices
- Keep a log of all expenses

Retain all bank statements. They are required as part of your reporting.

Reports due annually and 2 months after project completion.

Submit reports online through Grants Center

Take pictures of the project before initiation, during your work and after completion.

Grant Management

- Spend grant funds only on items in the grant application
 - If you need to alter your spending plan significantly, contact TRF in advance for approval.
 - If you are underbudget, you may contact TRF in advance for permission to spend remaining funds in some other manner.
 - Any unspent funds will need to be returned to TRF.

YOU MUST:

- ☐ Qualify your club or district for global grants every year
- ☐ Actively involve the benefiting community in the project
- ☐ Partner with a club in another country
- ☐ Act as primary sponsor of no more than 10 active global grants at a time
- ☐ Develop a project plan that includes a budget and a financial management plan
- ☐ Apply for a grant through the Grant Center
- ☐ Stay up-to-date in reporting for all active grants

For humanitarian projects and those that involve vocational training teams:

- ☐ Conduct a community assessment before applying and include the results in your application
- ☒ Measure progress toward the outcome

District Number: 5340

District Status:  **Qualified**



Rotary Grant Center

Welcome to Rotary grants! As Rotary members, we contribute resources to solve some of the world's most serious problems in local communities to promoting peace worldwide, Rotary ideas to life.

Use the Grant Center to apply for a grant, track its progress, and manage grants in your district.

Types of grants

The Rotary Foundation offers grants that support humanitarian and vocational training teams. Here's an overview:



GRANT RESOURCES

Questions about the grant process? We're here to help, from getting you started to final steps.

[Application Supplement for Microcredit Projects](#)

[Areas of Focus Policy Statements](#)

[Community Assessment Results](#)

[Cooperating Organization Memorandum of Understanding](#)

[Global Grant Application Template](#)

[Global Grant Calculator](#)

[Global Grant Lifecycle](#)

[Global Grant Monitoring and Evaluation Plan Supplement](#)

[Global Grant Report Template](#)

[Global Grant Scholarship Supplement](#)

[Grant Travel](#)



STEPS FOR MONITORING AND EVALUATION PLAN

1. Establish clear project goals in the planning phase.
2. Identify applicable **Rotary Foundation standard measures**.
3. Identify additional **project-specific measures**.
4. Establish baseline data and the methods you'll use to collect data.
5. Submit the plan as part of the online application.
6. Collect data during the project and monitor progress.
7. Evaluate data and submit results to the online report.

EXAMPLES OF ROTARY FOUNDATION STANDARD MEASURES



Number of direct beneficiaries

Number of indirect beneficiaries

Number of people trained

Number of participants

Number of people receiving service

Number of events

Number of jobs created

Number of benefitting facilities

Number of communities with less conflict

YOU MUST:

- ☐ Qualify your club or district for global grants every year
- ☐ Actively involve the benefiting community in the project
- ☐ Partner with a club in another country
- ☐ Act as primary sponsor of no more than 10 active global grants at a time
- ☐ Develop a project plan that includes a budget and a financial management plan
- ☐ Apply for a grant through the Grant Center
- ☒ Stay up-to-date in reporting for all active grants

For humanitarian projects and those that involve vocational training teams:

- ☐ Conduct a community assessment before applying and include the results in your application
- ☐ Measure progress toward the outcome

TRF Reporting Requirements

- Every 12 months throughout the project duration

AND

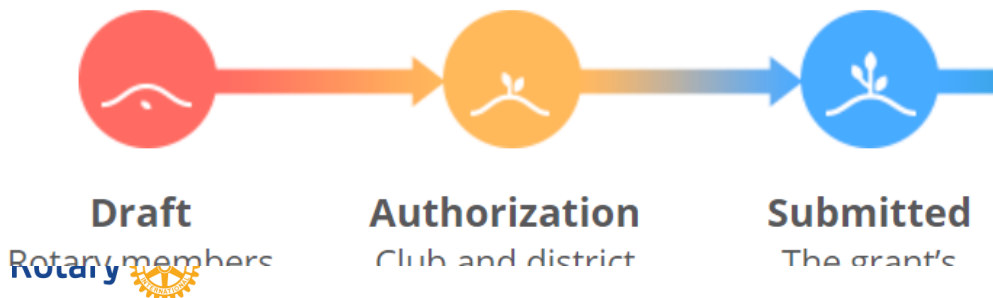
- Within 2 months after grant completion

Types of grants

The Rotary Foundation offers grants that support humanitarian and vocational training teams. Here's an overview:

- ▶ **Global grants** support large international projects with one or more of Rotary's areas of focus. They range from \$100,000 to \$1,000,000.
- ▶ **District grants** fund smaller-scale, short-term projects in your community or abroad.

The lifecycle of a Rotary grant



[Global Grant Monitoring and Evaluation Plan Supplement](#)

[Global Grant Report Template](#)

[Global Grant Scholarship Supplement](#)

[Grant Travel](#)

[Guide to Global Grants](#)

[Guidelines for Rotary Foundation-Funded Project Signage](#)

[How to Use the Grant Center](#)

[Report Supplement for Microcredit Projects](#)

[RI Exchange Rates](#)

[Rotary Grants Staff Contact Sheet](#)

[Six Steps to Sustainability](#)

[Terms and Conditions for Rotary Foundation District Grants and Global Grants](#)

[Training Plan for Global Grants](#)

[Vocational Training Team Itinerary](#)

[Vocational Training Team Member Application](#)

GLOBAL GRANT SCHOLARSHIP



GLOBAL GRANT VOCATIONAL TRAINING TEAM



Resources & References

[Grants & Services](#)

[Resources by Role](#)

[Membership Materials](#)

[Club and District
Administration](#)

[District Committees](#)

[Fundraising](#)


[Youth Protection](#)

[Policies & Procedures](#)

[View All](#)

Rotary Tools

[Rotary Club Central](#) 

[Rotary Showcase](#) 

[Brand Center](#) 

[Raise for Rot](#)

[Learning Center](#) 

[Grant Center](#) 

[Official Rotary Apps](#)

[Licensed Vendors](#)

Webinars

Club Leadership

[VIEW](#)

District Leadership

[VIEW](#)

Membership

[VIEW](#)

Professional Development

[VIEW](#)

Service

[VIEW](#)

The Rotary Foundation

[VIEW](#)



Club Rotary Foundation Committee Basics

10 courses | 3h 30m

 Learning Plan



Grant Management Recertification 2023-24

EN | 45m 00s

 E-learning

District International Service Committee Intermediate

6 courses | 2h 30m

 Learning Plan



Grant Management Seminar

ENROLLED

10 courses | 3h 10m

 Learning Plan

District Rotary Foundation Committee Intermediate

7 courses | 2h 30m

 Learning Plan



Protecting Personal Data

ENROLLED

EN | 30m 00s

★ 5.0

 E-learning



Grant Management Seminar

10 courses

About this Learning Plan

Interested in applying for a global grant? These courses can serve as part of the required training on grants in order to qualify your district on their specific requirements around training.

These courses will look at a grant from start to finish. It's best to take these courses before you start thinking about the type of grant you want to apply for. Interested in applying for a global grant and you have already completed this nine course series? The Grant Management Recertification training on grants in order to qualify your club to apply for grants. Check with your district on their specific requirements around



Grant Management Overview

Learn why grant management is an integral part of a successful global grant and get a comprehensive overview of the process.

E-learning | Duration: 15m



Planning for Sustainability

Well-planned Rotary grant projects can make lasting impacts on communities across the globe. This course will help you plan for sustainability.



Conducting a Community Assessment

The most successful projects work with a community to identify a need, how best to address

E-learning | Duration: 15m



Project Planning

Use the results of your community assessment to start planning your project. In this course

E-learning | Duration: 15m



Scholarships

Get tips for planning a global grant scholarship. Updated June 2023

E-learning | Duration: 15m



Roles and Responsibilities

Planning your global grant project includes finding all the resources you'll need to ensure s

E-learning | Duration: 10m



Global Grant Financial Management

Learn the importance of a financial management plan and how to prepare one to help you

E-learning | Duration: 15m



Measuring and Reporting Our Impact

Measuring and Reporting Impact will help members define impact as it relates to the proje



Measuring and Reporting Our Impact

Measuring and Reporting Impact will help members define impact as it relates to the

E-learning | Duration: 45m



Protecting Youth Program Participants

Effective youth protection policies may not prevent all incidents, but they can support

E-learning | Duration: 30m



Club Qualification

Review the club memorandum of understanding and learn the best practices for im

E-learning | Duration: 15m

To get approval for your grant DDF allocation from our District, you **MUST** enter your grant on matchinggrants.org and show that it is fully pledged.

Approvals will be considered at the next Foundation Committee meeting.

APPLYING FOR A GLOBAL GRANT

- Enter your project on Matchinggrants.org



APPLYING FOR A GLOBAL GRANT



Developed by District 5340
for use by the entire Rotary world

My Account | Search | Contact Us

Main List | Submit Project | Pledge Support | Help | About This Site | District Grants | Matching Grants

Welcome to the Rotary Global Grants Website

Look below for a list of project. Use the [search feature](#) to find a specific project.
Click on [My Account](#) to login and see your own projects.

Rotary Year

2016-17 ▼

List of Projects

#	Title	Country	Location	District	Club	Amount	Status
G-1320	Social Inclusion for Deaf	Brazil	Jundiai	4590	Jundiaí-Serra do Japy	\$100,000	Need \$58,000
G-1318	1001 Tapis	Tunisia	Kasserine	9010	Tunis Golfe New Generation	\$32,000	Need \$13,334
G-1317	Sehloi Primary School	South Africa	Limpopo	1150	Usk	\$600,000	Need \$393,334
G-1316	Medical Support for Clinics	Mexico	San blas	5300	Walnut Valley (Diamond Bar)	\$82,500	Need \$40,667
G-1315	2017 Eco-sanitation	Bolivia	Comanche	4690	La Paz-Sopocachi	\$183,000	Need \$74,000
G-1314	Medical Equip.for Maternity	Argentina	Pilar	4895	Pilar Norte	\$30,500	Need \$20,334
G-1313	Heart Defects Prevention	Ukraine	Lviv	2232	Lviv International	\$35,000	Need \$23,334
G-1312	Breast Cancer Detection	Mexico	Chihuahua	4110	Ciudad Juarez Frontera	\$84,001	Fully Pledged

APPLYING FOR A GLOBAL GRANT

Submit a New Project

Project Title Rotary Year
Region Country Location

Areas of Focus (Check all that apply)

- | | |
|---|---|
| <input type="checkbox"/> Peace and conflict prevention/resolution | <input type="checkbox"/> Disease prevention and treatment |
| <input type="checkbox"/> Water and sanitation | <input type="checkbox"/> Maternal and child health |
| <input type="checkbox"/> Basic education and literacy | <input type="checkbox"/> Economic and community development |

Project Description: You should include what needs have been identified, how the project will meet those needs, and the timeline for your project. Please specify what the project funds will be used for and how club members will be involved.

Primary Host Partner

District Number Rotary Club of
Contact Name Email
Amount contributed by Club in Project Country (if any)
Amount contributed by District in Project Country (if any)

Primary International Partner

This section is optional. Fill this section only if you have an International Partner (fully pledged or partially pledged). Leave blank otherwise.

District Number Rotary Club of
Contact Name Email
Amount contributed by International Club (if any)
Amount contributed by International District (if any)

Project Budget

TRF Grant # TRF Staff TRF Email
Additional Contribution (not matched by TRF) Total Budget

☒ Ask for TRF Match (uncheck when TRF funds are exhausted)



APPLYING FOR A GLOBAL GRANT

G-1037

CostaRica Craniofacial Smiles

Administration



Description

Financing

Documents

Photos

History Logs

Project Description

Region: Central America

Country: Costa Rica

Location: San Jose District 4240

Total Budget: \$150,000

Area of Focus: Disease prevention and treatment

After the initial diagnosis and treatment clinic for treatment of Craniofacial and Articulation disorders is in place this coming Spring 2016 treating minor disorders, the patients having advanced and debilitating conditions will need this advanced procedure grant to be able to obtain total joint replacement surgery, release of total jaw ankylosis and further reconstructive facial procedures such as Cranio-Orthognathic reconstructions. This grant will allow them to have access for this care via specialists educating the local clinicians in the techniques, and still be able to have sustainable care provided by the ongoing educational University of Latina efforts associated with this charitable and educational clinic.

The population located in Costa Rica afflicted with residual craniofacial and articulation disorders will be the direct beneficiaries. Future patients currently treated by the Children's Hospital who will outgrow their free benefits before obtaining final reconstructive results will also benefit. There are an estimated population in Costa Rica of over 100,000 suffering with articulation disorders affiliated with Cranio-Skeletofacial or dental disorders. The timeline will take place from December 2016 until June 2017



[View Online Proposal Form](#)

Primary Host Partner

District: 4240

Primary Contact: Juan Augusto Hernandez Hernandez

Rotary Club of: San Juan del Murcielago-Tibás

Email: ahernandez@hdezcpa.com

Primary International Partner

District: 5340

Primary Contact: Dr Jeff Moses

Rotary Club of: Carlsbad

Email: drjeffmoses@yahoo.com

Project Status

Need \$100,000

This project needs to receive some pledges to go to the next level. Please check the "Financing" tab to see the list of current pledges. Once the amount pledged is equal to the project budget, the status of the project will be automatically changed to "Fully Pledged".

[Click here](#) to pledge support for this project.

Project listed for the 2016-17 Rotary Year.

The TRF Grant application number is #16366.



APPLYING FOR A GLOBAL GRANT

project. You do not have to send the money until instructed to do so. You will be contacted when all the funding for this project has been identified. Thank you for your support!

Pledge Support for Project G-1037 - CostaRica Craniofacial Smiles

[Click here](#)

IF

you do want to make an **immediate** donation by **credit card** instead of a **pledge** for your club or district.



District Number

Rotary Club of

Contact Name

Contact Email

Amount contributed by this Club (if any) (Cash)

Amount contributed by this District (if any) (DDF)

Cancel

Reset

Save



APPLYING FOR A GLOBAL GRANT

G-1144

Empowering Salvadorans

Administration



Description

Financing

Documents

Photos

History Logs

Proposed Financing

Existing Contributions Towards This Project

	Date	Cash	DDF	Total
San Salvador Cuscatlán (4240)	9-May-16	\$5,000	-	\$5,000
La Jolla Sunrise (5340)	9-May-16	\$10,000	\$10,000	\$20,000
Coronado (5340)	19-Sep-16	\$1,000	-	\$1,000
District 6960 DDF	21-Sep-16	-	\$5,000	\$5,000
Poulsbo-North Kitsap (5020)	21-Sep-16	\$3,715	-	\$3,715
Bainbridge Island (5020)	19-Oct-16	\$5,000	-	\$5,000
Torrey Pines (La Jolla) (5340)	18-Nov-16	\$10,000	\$10,000	\$20,000
Ciudad Merliot-Santa Tecla (4240)	22-Dec-16	\$500	-	\$500
Burlington (5050)	8-Feb-17	\$3,000	-	\$3,000
District 4240 DDF	8-Feb-17	-	\$10,000	\$10,000
District 5280 DDF	8-Feb-17	-	\$5,000	\$5,000

Remaining Amount to Raise

Additional Club Contribution (Needed) - Add a contribution

Amount Requested from The Rotary Foundation \$41,786 - \$41,786 \$40,000 \$40,000 \$79,999

Total \$200,000

DDF contributions in grey are pending approval of the corresponding district committee.

Note: as of July 1, 2015 there is a 5% additional support fee for cash contributions. This fee does not appear in the financials above because it does not apply if the funds are sent directly to the project account (without going through TRF, and therefore without Paul Harris credit). Clubs sending their cash contribution to TRF must be aware they will have to send an additional 5%.

APPLYING FOR A GLOBAL GRANT

When you are working on matchinggrants.org, click refresh if you don't see your work reflected on the screen!

YOU MUST:

- ☐ Qualify your club or district for global grants every year
- ☐ Actively involve the benefiting community in the project
- ☐ Partner with a club in another country
- ☐ Act as primary sponsor of no more than 10 active global grants at a time
- ☐ Develop a project plan that includes a budget and a financial management plan
- ☒ Apply for a grant through the Grant Center
- ☐ Stay up-to-date in reporting for all active grants

For humanitarian projects and those that involve vocational training teams:

- ☐ Conduct a community assessment before applying and include the results in your application
- ☐ Measure progress toward the outcome

APPLYING FOR A GLOBAL GRANT

ROTARY.ORG > My Rotary | Janice Kurth | Sign out

Grant Search

English



Grant Center

Home

Apply for a Grant

My Grants

My Actions

More...

Rotary Grants | Grant Center

District Number: 5340

District Status:  Qualified

RESOURCES



Rotary Grant Center

Welcome to Rotary grants! As Rotary members, we contribute our skills, expertise, and resources to solve some of the world's most serious problems. From providing clean water in local communities to promoting peace worldwide, Rotary grants can bring your project ideas to life.

Use the Grant Center to apply for a grant, track its progress, report on it, and search for other

APPLYING FOR A GLOBAL GRANT

Global Grant Application

All fields are required unless noted as "optional".

Step 1: Basic Information

Enter some basic information, and then we'll give your application a number.

What's the name of your project?

100/100 characters

What type of project are you planning?

Check all that apply. This will tell us what else we need to ask you.

- ☐ **A humanitarian project**
Address community needs and produce sustainable, measurable outcomes
- ☐ **Vocational training**
Build skills within a community by supporting a team of professionals that will travel abroad to train or learn from colleagues in the community they visit
- ☐ **A scholarship**
Fund international graduate-level study by someone seeking a career within an area of focus

Select the primary host and international contacts for this project.

Name	Club	DistrictSponsor	Role
<div>+Add Primary Contact <input checked="" type="checkbox"/> Notify Primary Contact</div>			

 [Switch host, international contacts, and committees.](#)

Save & Continue

[Exit](#)

GRANT INFORMATION

GRANT NUMBER

...

GRANT STATUS

...

LAST ACTIVITY

17/03/2017

Grant Resources

Questions about the grant process? We're here to help, from getting you started to final steps.

[Application Supplement for Microcredit Projects](#)

[Areas of Focus Policy Statements](#)

[Conflict of Interest Policy for Program Participants](#)

[Cooperating Organization Memorandum of Understanding](#)

[Global Grant Calculator](#)

[Global Grant Lifecycle](#)

[Global Grant Monitoring and Evaluation Plan Supplement](#)

[Global Grant Scholarship Supplement](#)

[Grant Travel](#)



APPLYING FOR A GLOBAL GRANT

Step 2: Committee Members

Step 3: Project Overview

Step 4: Areas of Focus

Step 5: Measuring Success

Step 6: Location and Dates

Step 7: Participants

Step 8: Budget

Step 9: Funding

Step 10: Sustainability

Finalize & Submit

Step 11: Review and Lock

Step 12: Authorizations

Rotary5340.org

Search



Member Login



About ▾

Events ▾

Clubs ▾

Members ▾

News ▾

Service ▾

Foundation ▾

Help ▾

Rotary Foundation

Donate

Grants

Paul Harris Society

Polio Plus

Polio Plus Society

Resources & References

District Foundation Committee

TOGETHER, WE

INSPIRE

Rotary



PEOPLE OF ACTION

Rotary5340.org

GRANTS

[Guide to Grants](#)

Global Grants

[Grant Policies District 5340 - 2023-2024](#)

[Grant Policies District 5340 2022-2023](#)

[Global Grants](#)

[Global Grants Training Seminar 2022 Youtube](#)

[Global Grants Seminar 2 \(PDF\)](#)

[Global Grant Quiz](#)

[Club Memorandum of Understanding \(PDF\)](#)


[Club Memorandum of Understanding Worksheet \(PDF\)](#)

[MatchingGrants.org - Global](#)



The Rotary Foundation - Transforming the World



Watch on  YouTube

WELCOME TO GRANTS

District Grants and Global Grants from The Rotary Foundation (TRF) are a wonderful way of exciting and meaningful projects in your own community and/or with a Rotary Club in another

District Grants can leverage your club's cash (often doubling it!) for a project at a local or regional

Thank you for completing this quiz.



IMPORTANT ANNOUNCEMENT

DDF allocations for Global Grants for the 2025-2026 Rotary year will be considered starting immediately!

(If qualification requirements are complete.)

RESOURCES

- [My.rotary.org](https://my.rotary.org)
 - Grants Center
 - Learning Center
 - Cadre@rotary.org

- www.rotary5340.org
 - “Foundation”
 - “Resources & References”

- [YouTube](https://www.youtube.com)
 - “Rotary cultivating effective projects”

THE ROTARY FOUNDATION SAYS:

Thank you!

And I thank you too.

Contact me at janice@janicekurth.com with questions and/or clarifications.