



GLOBAL GRANTS TRAINING SEMINAR

Rotary District 5340

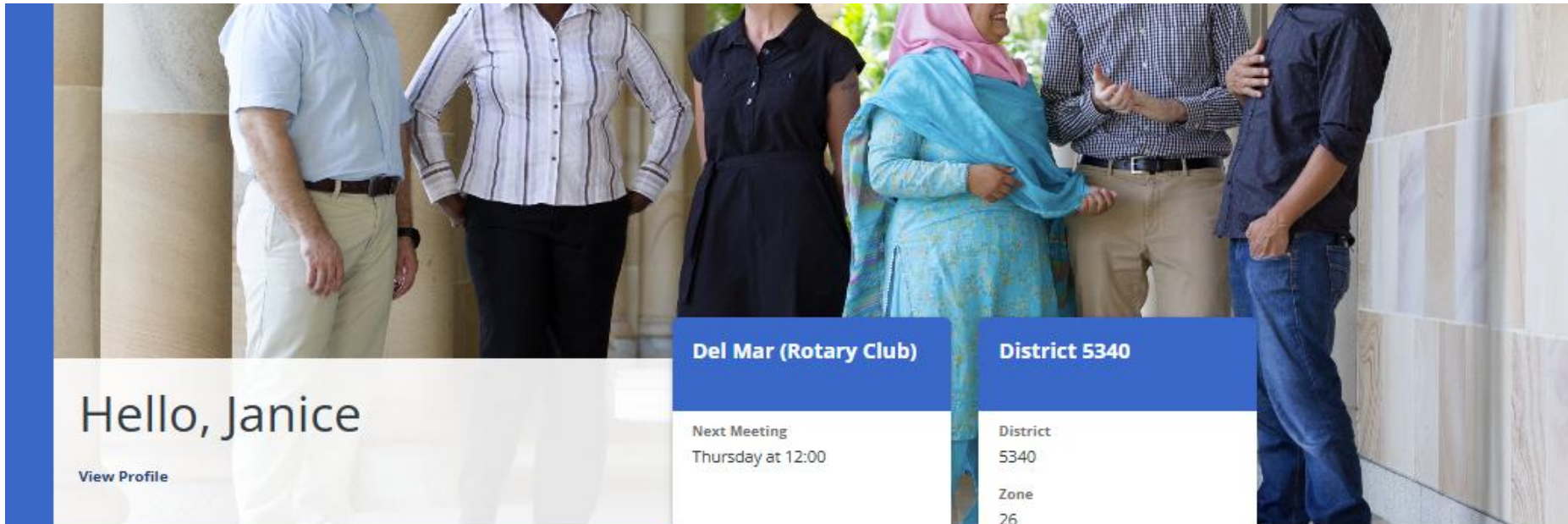
For Rotary year 2026-2027





A GUIDE TO
GLOBAL GRANTS

My.Rotary.org



Hello, Janice

[View Profile](#)

Del Mar (Rotary Club)

Next Meeting
Thursday at 12:00

[View Club →](#)

District 5340

District
5340

Zone
26

[View District →](#)



Rotary Club Central »
Set club goals and track how you're doing. Monitor your progress with detailed reports.

Grant Center »
Launch and manage all your Rotary Foundation grants in one place.

Membership and Foundation Reports »
Find reports with data about membership, contributions, recognition, and more.

Manage Prospective Members »
Review and take action on your membership candidates- from inquiry to induction.

Learning Center »
Learn new skills with online classes and materials created for your specific role or interests.

Service Project Center »
Browse successful club projects from around the world.

Grant Center

Welcome to the Grant Center! As Rotary members, we contribute our skills, expertise, and resources to solve some of the world's most serious problems. From providing clean water in local communities to promoting peace worldwide, Rotary grants can bring your project ideas to life. Use the Grant Center to apply for a grant, track its progress, report on it, and search for other grants in your district.

Del Mar

Rotary Club

District Number: 5340 District Status:  Qualified

My Grants

An overview of the Rotary district grants and global grants you're involved in.

[View My Grants](#)

Apply for a Grant

The Rotary Foundation offers grants that support humanitarian projects, scholarships, and vocational training teams.

[Apply for a Grant](#)

Grant Search

Search for grants sponsored by your district or by a club in your district.

[Search for a Grant](#)

Grant Resources

Questions about the grant process? We're here to help, from getting you started to final steps.

[View resources](#)

Grant Resources

Questions about the grant process? We're here to help, from getting you started to final steps.

Del Mar

Rotary Club

District Number: 5340 District Status:  Qualified

Grants

Resources for global grants

General reference

Use these resources to learn more about global grants

- [A Guide to Global Grants](#)
- [Areas of Focus Policy Statements](#)
- [Basic Education and Literacy Guidelines for Global Grant Funding](#)
- [Community Economic Development Guidelines Global Grant Funding](#)
- [Disease Prevention and Treatment Guidelines for Global Grant Funding](#)
- [Endowed and Directed Gifts for Global Grants Frequently Asked Questions](#)
- [Environment Guidelines for Global Grant Funding](#)
- [Maternal and Child Health Guidelines for Global Grant Funding](#)
- [Orientation for Global Grant Scholars](#)
- [Orientation for Vocational Training Teams](#)
- [Peacebuilding and Conflict Prevention Guidelines for Global Grant Funding](#)
- [Terms and Conditions for Rotary Foundation Global Grants](#)
- [Water, Sanitation, and Hygiene Guidelines for Global Grant Funding](#)

Application and report planning documents


Use these resources to help plan your application or report

- [Global Grant Application Template](#)
- [Global Grant Calculator](#)
- [Global Grant Report Template](#)
- [Global Grant Scholarship Candidate Application Template](#)
- [How to Use the Grant Center: Global Grant Scholars](#)

Application uploads

Complete these items and upload them with your application

- [Cooperating Organization Memorandum of Understanding](#)
- [Global Grant Application Supplement for Microcredit Projects](#)
- [Global Grant Report Supplement for Microcredit Projects](#)
- [Global Grants Community Assessment Results](#)
- [Training Plan for Global Grants](#)
- [Vocational Training Team Itinerary](#)
- [Vocational Training Team Member Application](#)




Resources for all grant types

[Conducting Community Assessments](#)
[District Rotary Foundation Chair Grants Handbook](#)
[Grant Responsibilities by Leader](#)
[Grant Travel Page](#)
[Guidelines for Rotary Foundation-Funded Project Signage and Use of Name "Rotary" or Other Rotary Marks](#)
[How to Use the Grant Center](#)
[Payment Instructions by Country](#)
[Returning Grant Funds to The Rotary Foundation](#)
[Rotary Grants Staff Contact Sheet](#)
[Rotary Impact Handbook](#)
[Travel Ban List](#)
[Using Grants and Cadre Reports on My Rotary](#)



Other

[Terms and Conditions for Rotary Disaster Response Grants](#)
[Terms and Conditions for Rotary Foundation District Grants](#)
[Programs of Scale Concept Note Template](#)
[Programs of Scale Frequently Asked Questions](#)
[Programs of Scale Grant Competition Handbook](#)



District Qualification

[Club Qualification Frequently Asked Questions](#)
[Club Qualification Memorandum of Understanding](#)
[Club Stewardship Planning Guide](#)
[District Qualification Frequently Asked Questions](#)
[District Qualification Memorandum of Understanding](#)
[District Stewardship Planning Guide](#)
[Grant Management Seminar Leader's Guide](#)
[Grant Management Seminar Learning Plan](#)
[How to Qualify your District for Rotary Grants](#)



Cadre

[Cadre Training Manual](#)
[Cadre Site Visit Feedback Meeting Worksheet Form](#)
[Cadre Site Visit Feedback Meetings](#)
[Cadre of Technical Advisers Travel and Expense Frequently Asked Questions](#)
[Site Visits: What Project Sponsors Should Know](#)
[Cadre Adviser Essentials](#)

General reference

Use these resources to learn more about global grants



[A Guide to Global Grants](#)

[Areas of Focus Policy Statements](#)

[Basic Education and Literacy Guidelines for Global Grant Funding](#)

[Community Economic Development Guidelines Global Grant Funding](#)

[Disease Prevention and Treatment Guidelines for Global Grant Funding](#)

[Endowed and Directed Gifts for Global Grants Frequently Asked Questions](#)

[Environment Guidelines for Global Grant Funding](#)

[Maternal and Child Health Guidelines for](#)

Resources for all grant types

Conducting Community Assessments

District Rotary Foundation Chair Grants Handbook

Grant Responsibilities by Leader

Grant Travel Page

Guidelines for Rotary Foundation-Funded Project Signage and Use of Name "Rotary" or Other

How to Use the Grant Center

Payment Instructions by Country

Returning Grant Funds to The Rotary Foundation

Rotary Grants Staff Contact Sheet

Rotary Impact Handbook

Travel Ban List

Using Grants and Cadre Reports on My Rotary

HOW TO USE THE GRANT CENTER

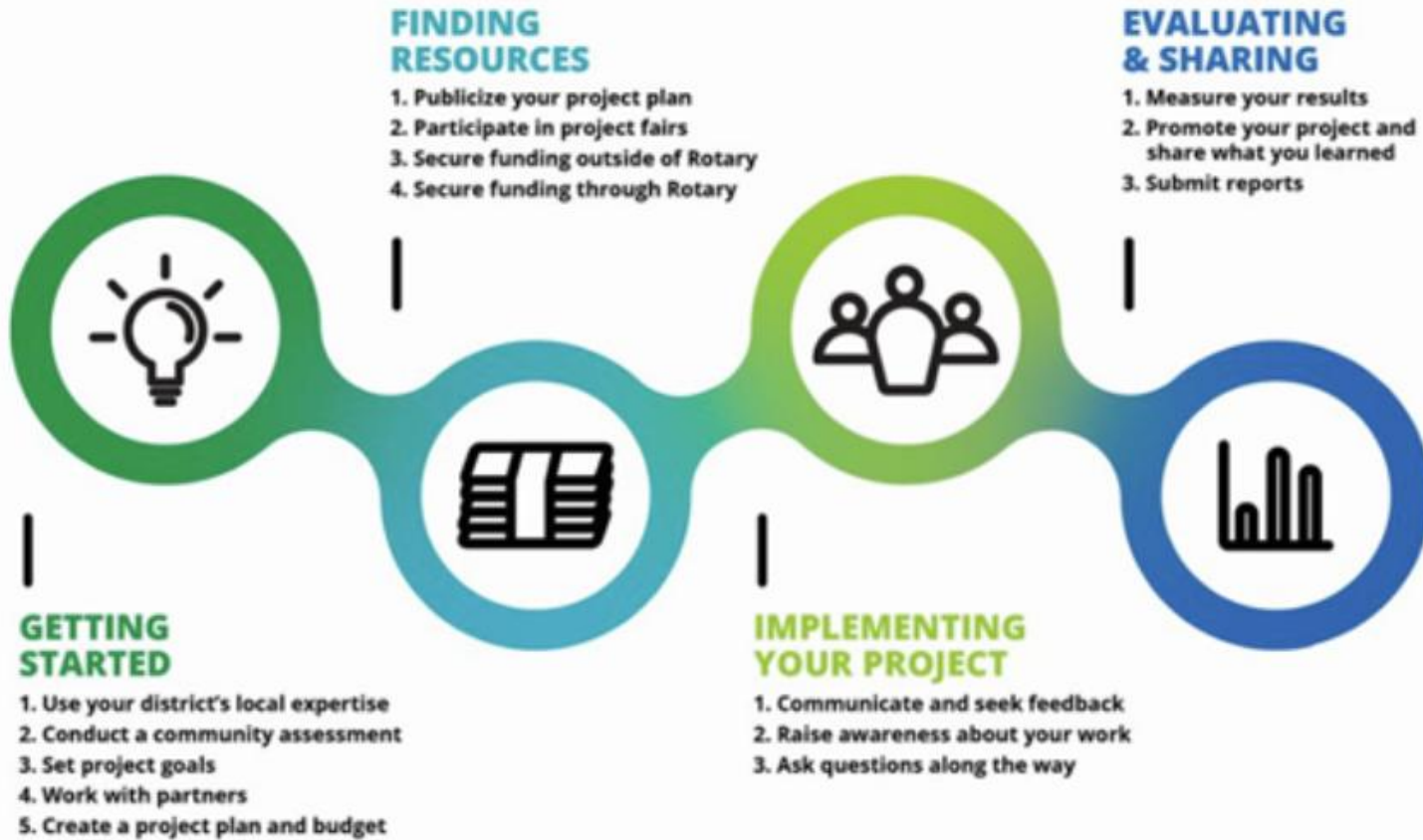


The Grant Center is the place to go for everything you need to do online for your Rotary Foundation grants, and it keeps all of Rotary's grant-related resources handy for you. This guide will show you how to:

- [Find the Grant Center](#)
- [Navigate the Grant Center](#)
- [Apply for a Global Grant](#)
- [Authorize a Global Grant Application \(Club Presidents and District Leaders\)](#)
- [Enter Global Grant Bank Account Information](#)
- [Report on a Global Grant](#)
- [Authorize a Global Grant Report](#)
- [Apply for a District Grant \(District Leaders Only\)](#)
- [Report on a District Grant \(District Leaders Only\)](#)

For general information about grants, go to Rotary.org's [Grants](#) page.

CULTIVATING EFFECTIVE PROJECTS



Go to YouTube. Search “Rotary cultivating effective projects”

<https://rotaryserviceblog.org/2023/04/17/join-us-for-the-cultivating-effective-projects-webinar-series/>.

GLOBAL GRANTS

- Meet a community need
- Sustainable, measurable outcomes
- Alignment with areas of focus
- Large, long-term projects
- International partnership



YOUR ACTIVITY NEEDS TO:


- + Address an important priority identified by the community
- Have long-term, sustainable outcomes that can be measured
- Align with the goals of at least one of Rotary's [areas of focus](#)
- Have a minimum budget of US\$30,000
- + Strengthen the community's ability to address its own priorities
- Involve active participation by local Rotary members

COMMUNITY ASSESSMENT IS REQUIRED!

- Base projects on real needs
- Identify resources that your club and potential partners have
- Talk to the community

Conducting Community Assessments

Building a foundation for effective Rotary projects

Rotary 

Click below to go to a page.

Why community assessments are important	2
Tips for conducting community assessments	4
Consent and data privacy	7
Examples of community assessments in action	8
Types of assessments	10
Asset inventory	11
Community mapping	14
Community meeting	17
Document and policy review	22
Focus group	24
Interview	28
Survey	32
Who to consult with throughout the assessment	37
Preparing the community assessment report	43

Resources for all grant types



[Conducting Community Assessments](#)

[District Rotary Foundation Chair Grants Handbook](#)

[Grant Responsibilities by Leader](#)

[Grant Travel Page](#)

[Guidelines for Rotary Foundation-Funded Project Signage and Use of Name "Rotary" or Other Rotary Marks](#)

[How to Use the Grant Center](#)

[Payment Instructions by Country](#)

[Returning Grant Funds to The Rotary Foundation](#)

[Rotary Grants Staff Contact Sheet](#)

[Rotary Impact Handbook](#)

[Travel Ban List](#)

[Using Grants and Cadre Reports on My Rotary](#)

Application uploads

Complete these items and upload them with your application

Cooperating Organization Memorandum of Understanding

Global Grant Application Supplement for Microcredit Projects

Global Grant Report Supplement for Microcredit Projects



Global Grants Community Assessment Results

Training Plan for Global Grants

Vocational Training Team Itinerary

Vocational Training Team Member Application

METHODS USED FOR ASSESSMENT



Survey

Community meeting

Interview(s)

Focus group

Asset inventory

Community mapping

Other

YOUR ACTIVITY NEEDS TO:

- Address an important priority identified by the community
- Have long-term, sustainable outcomes that can be measured
- Align with the goals of at least one of Rotary's [areas of focus](#)
- Have a minimum budget of US\$30,000
- Strengthen the community's ability to address its own priorities
- Involve active participation by local Rotary members

SUSTAINABILITY OF PROJECTS IS IMPORTANT FACTOR IN TRF CONSIDERATION

Giving a community the skills and knowledge to maintain project outcomes for the long term, after grant funds have been expended.



SUSTAINABILITY

For Rotary, sustainability means providing long-term solutions to community problems that community members themselves can support after the grant funding ends.



Start with the community

Identify a need and develop a solution that builds on community strengths and aligns with local values and culture.



Encourage local ownership

Identify key community members who can help pioneer lasting improvements.



Provide training

A project's success depends on people.



Buy local

Purchase equipment and technology from local sources.



Find local funding

Get local funding through governments, hospitals, companies, and other organizations.



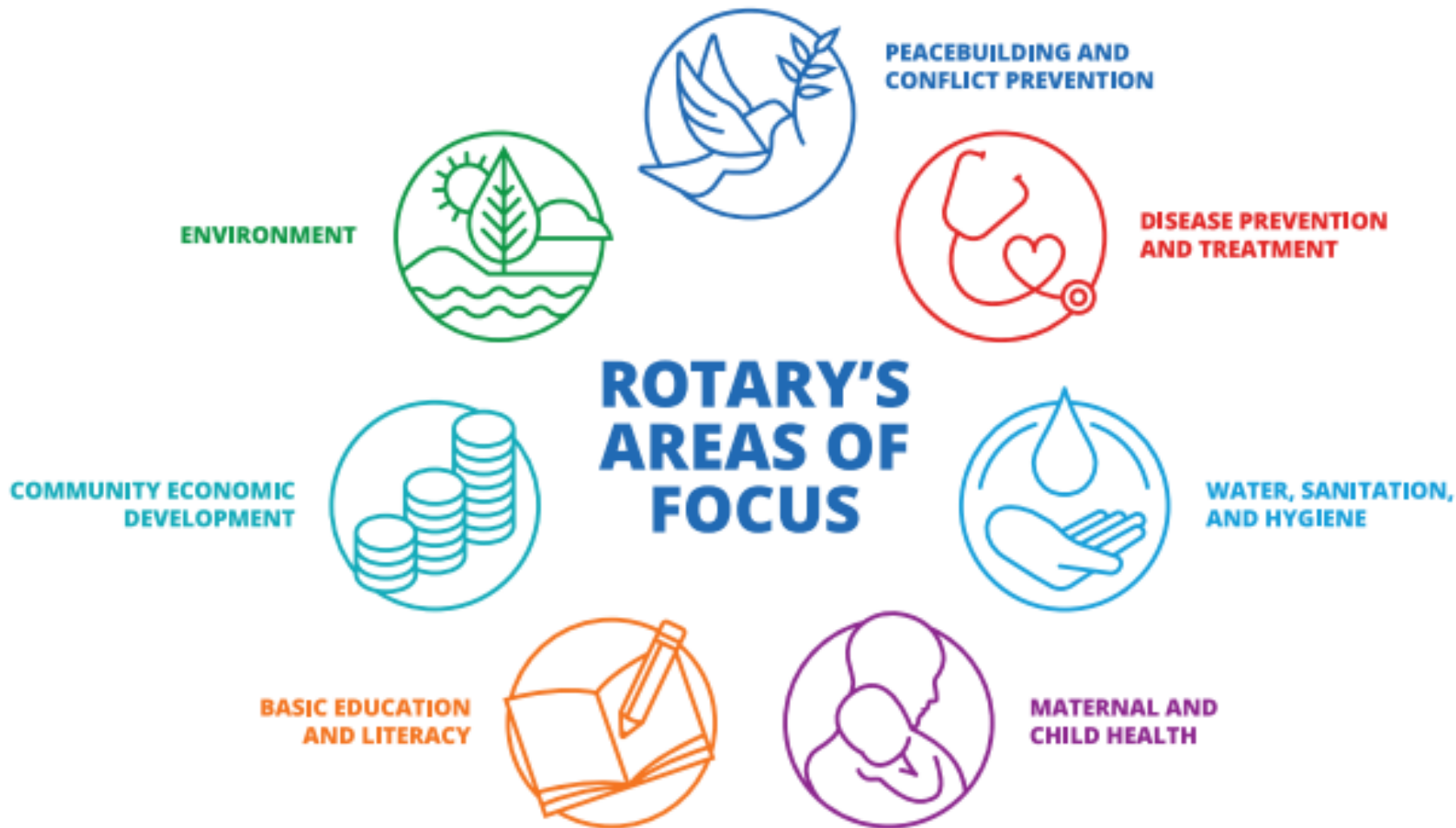
Measure your success

Develop clear and measurable project outcomes and determine how you will collect your data.



YOUR ACTIVITY NEEDS TO:

- Address an important priority identified by the community
- Have long-term, sustainable outcomes that can be measured
- Align with the goals of at least one of Rotary's [areas of focus](#)
- Have a minimum budget of US\$30,000
- Strengthen the community's ability to address its own priorities
- Involve active participation by local Rotary members



General reference

Use these resources to learn more about global grants

A Guide to Global Grants

Areas of Focus Policy Statements

Basic Education and Literacy Guidelines for Global Grant Funding

Community Economic Development Guidelines Global Grant Funding

Disease Prevention and Treatment Guidelines for Global Grant Funding

Endowed and Directed Gifts for Global Grants Frequently Asked Questions

Environment Guidelines for Global Grant Funding

Maternal and Child Health Guidelines for Global Grant Funding

Orientation for Global Grant Scholars

Orientation for Vocational Training Teams

Peacebuilding and Conflict Prevention Guidelines for Global Grant Funding

Terms and Conditions for Rotary Foundation Global Grants

Water, Sanitation, and Hygiene Guidelines for Global Grant Funding

MOST IMPORTANT BIT OF GRANT ADVICE

Only pick only **ONE** area of focus no matter how many areas of focus you think your project fits!

YOUR ACTIVITY NEEDS TO:

- Address an important priority identified by the community
- Have long-term, sustainable outcomes that can be measured
- Align with the goals of at least one of Rotary's [areas of focus](#)
- Have a minimum budget of US\$30,000
- Strengthen the community's ability to address its own priorities
- Involve active participation by local Rotary members

GLOBAL GRANTS

- Are BIG!
 - \$30,000 minimum total budget
- World Fund match
 - DDF matched 80%
 - No minimum
 - Maximum \$200,000 (without additional review)



YOUR ACTIVITY NEEDS TO:

- ❑ Address an important priority identified by the community
- ❑ Have long-term, sustainable outcomes that can be measured
- ❑ Align with the goals of at least one of Rotary's [areas of focus](#)
- ❑ Have a minimum budget of US\$30,000
- ❑ Strengthen the community's ability to address its own priorities
- ✚ Involve active participation by local Rotary members

IMPORTANT BIT OF GRANT ADVICE

Rotary is not in the business of providing funds for other non-profits.

GRANT SPONSORS NEED TO:

- Become [qualified](#) every year
- Partner with a club or district in another country
- Actively involve the host community in planning and implementing the activity
- Develop a project plan that includes a budget and a financial management plan
- Apply for a grant through the [Grant Center](#)
- Stay up to date in reporting for all active grants
- Limit their role as primary sponsors to no more than 10 active grants at a time

CLUB QUALIFICATION

- 1. To qualify for global grant DDF, club must have achieved a minimum of \$100 per capita giving to the Annual Fund or a club total of at least \$20,000 for the 2025-2026 Rotary year.**
- 2. All District and RI dues must be up to date.**

CLUB QUALIFICATION

3. Two club members must attend this training and complete the assessment quiz.

4. TRF Memorandum of Understanding must be signed.
 - Signed by 2026-2027 & 2027-2028 presidents
 - Email signed form to PDG Mel Gallegos at melgallegos1819@gmail.com

District Qualification



Club Qualification Frequently Asked Questions

Club Qualification Memorandum of Understanding

Club Stewardship Planning Guide

District Qualification Frequently Asked Questions

District Qualification Memorandum of Understanding

District Stewardship Planning Guide

Grant Management Seminar Leader's Guide

Grant Management Seminar Learning Plan

How to Qualify your District for Rotary Grants

Rotary5340.org

GRANTS

[Guide to Grants](#)

[Grant Policies District 5340 - 2025-2026](#)

[Grant Policies District 5340 - 2024-2025](#)

Global Grants

[2024-25 Global Grants Seminar](#)

[2024-25 Global Grant Quiz](#)

[DDF Special Grant Project](#)

[Global Grants](#)

[Club Memorandum of Understanding \(PDF\)](#)

[Club Memorandum of Understanding Worksheet \(PDF\)](#)

[MatchingGrants.org - Global Grants](#)

[Rotary Grant Center](#)



WELCOME TO GRANTS

District Grants and Global Grants from The Rotary Foundation (TRF) are a wonderful way of getting your club involved in exciting and meaningful projects in your own community and/or with a Rotary Club in another country.

District Grants can leverage your club's cash (often doubling it!) for a project at a local or regional organization.

Global Grants are even more exciting. They usually involve partnering with a Rotary club in another country to a high

CLUB QUALIFICATION

5. All grant reporting must be up to date.
6. No more than 10 active global grants.
7. The club's Rotary Foundation giving goals for 2026-2027 must be entered by the club president (or elect).

GRANT SPONSORS NEED TO:

- Become [qualified](#) every year
- Partner with a club or district in another country
- Actively involve the host community in planning and implementing the activity
- Develop a project plan that includes a budget and a financial management plan
- Apply for a grant through the [Grant Center](#)
- Stay up to date in reporting for all active grants
- Limit their role as primary sponsors to no more than 10 active grants at a time

GLOBAL GRANTS REQUIRE

- ❖ International partnership
 - ❖ Host
 - ❖ International Club
 - ❖ must contribute at least 15% of funding
 - ❖ Exceptions
 - ❖ Term gifts involved



HOW TO FIND ROTARY PARTNERS FOR GLOBAL GRANTS



Rotary Convention

Project fairs

LinkedIn

Facebook

Rotary events

www.matchinggrants.org/global

www.rotary.org/rotaryideas

YOUR GLOBAL GRANT “COMMITTEE”

- Both the Host and International Clubs must have:
 - Primary Contact
 - Two additional club members for the grant committee



GRANT SPONSORS NEED TO:

- Become [qualified](#) every year
- Partner with a club or district in another country
- Actively involve the host community in planning and implementing the activity
- Develop a project plan that includes a budget and a financial management plan
- Apply for a grant through the [Grant Center](#)
- Stay up to date in reporting for all active grants
- Limit their role as primary sponsors to no more than 10 active grants at a time

DISTRICT 5340 GLOBAL GRANT RULES

Each Club eligible for up to \$10,000 in Global Grant District Designated Funds (DDF) for 2026-2027 Rotary year.

Club cash contributions are matched 1:1 up to \$10,000.

DISTRICT 5340 GLOBAL GRANT RULES

- Clubs encouraged to work together to do bigger grants
 - No more than \$30,000 in DDF collectively for a single grant
- Grants must be fully pledged on MatchingGrants.org before DDF will be allocated for your project.

ROTARY FOUNDATION MATCHING FUNDS

- Cash donations by Clubs
 - No Rotary Foundation match
 - Note: 5% must be added to club cash contributions for administrative costs
(May be avoided by contributing directly to project account)
- District Designated Funds
 - Matched 80%

ROTARY FOUNDATION MATCHING FUNDS

- Example:
 - \$12,000 Clubs' cash (+\$600 for admin)
 - \$12,000 District Designated Funds (1:1 cash match)
 - TRF Match
 - \$9,600 for DDF (80% of \$12,000)
 - Total Funds for project -- \$33,600

Application and report planning documents

Use these resources to help plan your application or report

Global Grant Application Template

Global Grant Calculator

Global Grant Report Template

Global Grant Scholarship Candidate Application Template

How to Use the Grant Center: Global Grant Scholars



Please list all financing and indicate Cash or District Designated Fund (DDF) amounts.

Global Grant Financing Planner

Application #	GG2012345	Project Country	Utopia		
DDF (USD)	Cash Direct to Project (Equiv USD)	Cash through TRF (Equiv USD)			
		Project Cash	5%	Total to TRF	

1. Host Rotary Clubs/Districts

Rotary Club of ABC	\$ 5,000		\$ 5,000	\$ 250	\$ 5,250
Rotary Club of DEF			10,000	500	10,500
Rotary Club of GHI		10,000		-	-
				-	-
				-	-
				-	-
				-	-
				-	-

Total Host Contributions \$ 5,000 \$ 10,000 \$ 15,000 \$ 30,000 75%

2. International Rotary Clubs/Districts

Rotary Club of UVW	\$ 6,000		\$ 3,000	\$ 150	\$ 3,150
Rotary Club of XYZ	1,000			-	-
				-	-
				-	-
				-	-
				-	-
				-	-
				-	-

Total International Contributions \$ 7,000 \$ - \$ 3,000 \$ 10,000 25%¹

\$ 12,000 \$ 10,000 \$ 18,000 Total Rotarian Contributions \$ 40,000 100%

3. TRF World Fund match (80% of DDF)

\$ 9,600

World Fund match 9,600²

4. Endowed/Directed Gift#

(5% NA) -

Total Global Grant Funding \$ 49,600³

5. Other donors (unmatched)

			\$ -	\$ -
			-	-
			-	-
			-	-

Total Project Funding (must be equal to budget) \$ 49,600⁴

WHEN YOUR GRANT IS APPROVED.....

- **Project specific bank account** must be established.
- All cash must be sent to TRF or bank account.
 - 5% surcharge for funds sent to TRF – get Paul Harris credit
 - No surcharge if funds sent directly to project bank account
- TRF will wire funds to the project bank account, **including DDF.**

NOTE

(an answer to a very common question)

The DDF portion is never in the District's hands. We don't need to do anything once the grant is approved to transfer these funds to the project account. The Rotary Foundation does this directly.

Proper Grant Management



- Ensures that projects
- Have proper financial controls
 - Adhere to technical standards
 - Meet the needs of beneficiaries
 - Fulfill their objectives
 - Safeguard funds

Grant management and reporting is the responsibility of both the international and host grant committees.

Grant Management



Document ALL expenditures

- Save all receipts and invoices
- Keep a log of all expenses

Retain all bank statements. They are required as part of your reporting.

Reports due annually and 2 months after project completion.

Submit reports online through Grants Center

Take pictures of the project before initiation, during your work and after completion.

Grant Management

- Spend grant funds only on items in the grant application
 - If you need to alter your spending plan significantly, contact TRF in advance for approval.
 - If you are under budget, you may contact TRF in advance for permission to spend remaining funds in some other manner.
 - Any unspent funds will need to be returned to TRF.

Grants must comply with
D5340 Youth Protection Policy
(if applicable)

YOUR ACTIVITY NEEDS TO:

- Address an important priority identified by the community
- Have long-term, sustainable outcomes that can be measured
- Align with the goals of at least one of Rotary's [areas of focus](#)
- Have a minimum budget of US\$30,000
- Strengthen the community's ability to address its own priorities
- Involve active participation by local Rotary members

STEPS FOR MONITORING AND EVALUATION PLAN

1. Establish clear project goals in the planning phase.
2. Identify applicable **Rotary Foundation standard measures**.
3. Identify additional **project-specific measures**.
4. Establish baseline data and the methods you'll use to collect data.
5. Submit the plan as part of the online application.
6. Collect data during the project and monitor progress.
7. Evaluate data and submit results to the online report.

EXAMPLES OF ROTARY FOUNDATION STANDARD MEASURES



Number of direct beneficiaries

Number of indirect beneficiaries

Number of people trained

Number of participants

Number of people receiving service

Number of events

Number of jobs created

Number of benefitting facilities

Number of communities with less conflict

A Useful tool not in Grant Center Resources for what reason I have no clue.....

Search Rotary.org for:
“Global Grant Monitoring and
Evaluation Supplement”

GRANT SPONSORS NEED TO:

- ❑ Become [qualified](#) every year
- ❑ Partner with a club or district in another country
- ❑ Actively involve the host community in planning and implementing the activity
- ❑ Develop a project plan that includes a budget and a financial management plan
- ❑ Apply for a grant through the [Grant Center](#)
- ✚ Stay up to date in reporting for all active grants
- ❑ Limit their role as primary sponsors to no more than 10 active grants at a time

TRF Reporting Requirements

- Every 12 months throughout the project duration

AND

- Within 2 months after grant completion

Application and report planning documents

Use these resources to help plan your application or report

Global Grant Application Template

Global Grant Calculator



Global Grant Report Template

Global Grant Scholarship Candidate Application Template

How to Use the Grant Center: Global Grant Scholars

GLOBAL GRANT SCHOLARSHIP



GLOBAL GRANT VOCATIONAL TRAINING TEAM



Hello, Janice

[View Profile](#)

Del Mar (Rotary Club)

Next Meeting
Thursday at 12:00

[View Club →](#)

District 5340

District
5340
Zone
26

[View District →](#)

Rotary Club Central »

Set club goals and track how you're doing. Monitor your progress with detailed reports.

Grant Center »

Launch and manage all your Rotary Foundation grants in one place.

Membership and Foundation Reports »

Find reports with data about membership, contributions, recognition, and more.

Manage Prospective Members »

Review and take action on your membership candidates- from inquiry to induction.

Learning Center »

Learn new skills with online classes and materials created for your specific role or interests.

Service Project Center »

Browse successful club projects from around the world.

Club Leadership

[VIEW](#)

District Leadership

[VIEW](#)

Membership

[VIEW](#)

Professional Development

[VIEW](#)

Service

[VIEW](#)

The Rotary Foundation

[VIEW](#)



Club Rotary Foundation
Committee Basics

10 courses | 3h 30m

 Learning Plan

District International Service
Committee Intermediate

6 courses | 2h 30m

 Learning Plan

District Rotary Foundation
Committee Intermediate


7 courses | 2h 30m

 Learning Plan



Grant Management
Recertification 2023-24

EN | 45m 00s

 E-learning



Grant Management Seminar

ENROLLED

10 courses | 3h 10m

 Learning Plan



Protecting Personal Data

ENROLLED

EN | 30m 00s

★ 5.0

 E-learning



Grant Management Seminar

10 courses

About this Learning Plan

Interested in applying for a global grant? These courses can serve as part of the required training on grants in order to qualify your district on their specific requirements around training.

These courses will look at a grant from start to finish. It's best to take these courses before you start thinking about the type of grant you want to apply for.

Interested in applying for a global grant and you have already completed this nine course series? The Grant Management Recertification courses provide additional training on grants in order to qualify your club to apply for grants. Check with your district on their specific requirements around training.



Grant Management Overview

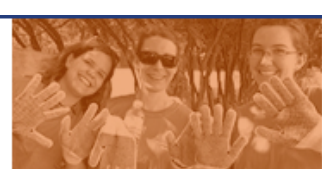
Learn why grant management is an integral part of a successful global grant and get a comprehensive overview of the grant process.

E-learning | Duration: 15m



Planning for Sustainability

Well-planned Rotary grant projects can make lasting impacts on communities across the globe. This course provides a framework for planning for sustainability.



Conducting a Community Assessment

The most successful projects work with a community to identify a need, how best to address it, and how to measure impact.

E-learning | Duration: 15m



Project Planning

Use the results of your community assessment to start planning your project. In this course, you will learn how to create a project plan that includes a timeline, budget, and roles and responsibilities.

E-learning | Duration: 15m



Scholarships

Get tips for planning a global grant scholarship. Updated June 2023

E-learning | Duration: 15m



Roles and Responsibilities

Planning your global grant project includes finding all the resources you'll need to ensure success. This course will help you understand the roles and responsibilities of all the people involved in your project.

E-learning | Duration: 10m



Global Grant Financial Management

Learn the importance of a financial management plan and how to prepare one to help you manage your global grant project.

E-learning | Duration: 15m



Measuring and Reporting Our Impact

Measuring and Reporting Impact will help members define impact as it relates to the project and how to report on it.



Measuring and Reporting Our Impact

Measuring and Reporting Impact will help members define impact as it relates to the

E-learning | Duration: 45m



Protecting Youth Program Participants

Effective youth protection policies may not prevent all incidents, but they can support

E-learning | Duration: 30m



Club Qualification

Review the club memorandum of understanding and learn the best practices for im

E-learning | Duration: 15m

To get approval for your grant DDF allocation from our District, you **MUST** enter your grant on matchinggrants.org and show that it is **fully pledged**.

Approvals will be considered at the next Foundation Committee meeting.

APPLYING FOR A GLOBAL GRANT

- Enter your project on Matchinggrants.org

The screenshot shows the Rotary Grants Website interface. At the top left is the Rotary International logo. To its right, a yellow banner reads "Developed by District 5340 for use by the entire Rotary world". Below this is a row of five small images: a Rotary project sign, a man holding a check, a woman at a desk, a group of people, and a water pump. The text "Rotary Grants Website" is overlaid on the right side of these images. A yellow navigation bar below the images contains the links: "Global Grants | District Grants | Legacy Matching Grants | Help | About This Site | Contact Us". A blue banner below the navigation bar says "Welcome to the Rotary Grants Website!". Below this, a yellow box says "Select one of the Website Sections". Two large buttons are shown: "Global Grants" with a globe icon and "District Grants" with a house icon. Both buttons have a red "Enter" label and a hand cursor icon. A large red arrow points from the left towards the "Global Grants" button. A green Y-shaped arrow points downwards from between the two buttons. At the bottom, there is a decorative gold frame.

APPLYING FOR A GLOBAL GRANT



Developed by District 5340
for use by the entire Rotary world

[My Account](#) | [Search](#) | [Contact Us](#)



[Main List](#) | [Submit Project](#) | [Pledge Support](#) | [Help](#) | [About This Site](#) | [District Grants](#) | [Matching Grants](#)

Welcome to the Rotary Global Grants Website

Look below for a list of project. Use the [search feature](#) to find a specific project.
Click on [My Account](#) to login and see your own projects.

Rotary Year

2016-17 ▼

List of Projects

#	Title	Country	Location	District	Club	Amount	Status
G-1320	Social Inclusion for Deaf	Brazil	Jundiai	4590	Jundiai-Serra do Japy	\$100,000	Need \$58,000
G-1318	1001 Tapis	Tunisia	Kasserine	9010	Tunis Golfe New Generation	\$32,000	Need \$13,334
G-1317	Sehloi Primary School	South Africa	Limpopo	1150	Usk	\$600,000	Need \$393,334
G-1316	Medical Support for Clinics	Mexico	San blas	5300	Walnut Valley (Diamond Bar)	\$82,500	Need \$40,667
G-1315	2017 Eco-sanitation	Bolivia	Comanche	4690	La Paz-Sopocachi	\$183,000	Need \$74,000
G-1314	Medical Equip.for Maternity	Argentina	Pilar	4895	Pilar Norte	\$30,500	Need \$20,334
G-1313	Heart Defects Prevention	Ukraine	Lviv	2232	Lviv International	\$35,000	Need \$23,334
G-1312	Breast Cancer Detection	Mexico	Chihuahua	4110	Ciudad Juarez Frontera	\$84,001	Fully Pledged

APPLYING FOR A GLOBAL GRANT

Submit a New Project

Project Title Rotary Year

Region Country Location

Areas of Focus (Check all that apply)

- Peace and conflict prevention/resolution
- Disease prevention and treatment
- Water and sanitation
- Maternal and child health
- Basic education and literacy
- Economic and community development

Project Description: You should include what needs have been identified, how the project will meet those needs, and the timeline for your project. Please specify what the project funds will be used for and how club members will be involved.

Primary Host Partner

District Number Rotary Club of

Contact Name Email

Amount contributed by Club in Project Country (if any)

Amount contributed by District in Project Country (if any)

Primary International Partner

This section is optional. Fill this section only if you have an International Partner (fully pledged or partially pledged). Leave blank otherwise.

District Number Rotary Club of

Contact Name Email

Amount contributed by International Club (if any)

Amount contributed by International District (if any)

Project Budget

TRF Grant # TRF Staff TRF Email

Additional Contribution (not matched by TRF) Total Budget

Ask for TRF Match (uncheck when TRF funds are exhausted)



APPLYING FOR A GLOBAL GRANT

G-1037

Costa Rica Craniofacial Smiles

Administration



Description

Financing

Documents

Photos

History Logs

Project Description

Region: Central America **Country:** Costa Rica **Location:** San Jose District 4240 **Total Budget:** \$150,000
Area of Focus: Disease prevention and treatment

After the initial diagnosis and treatment clinic for treatment of Craniofacial and Articulation disorders is in place this coming Spring 2016 treating minor disorders, the patients having advanced and debilitating conditions will need this advanced procedure grant to be able to obtain total joint replacement surgery, release of total jaw ankylosis and further reconstructive facial procedures such as Cranio-Orthognathic reconstructions. This grant will allow them to have access for this care via specialists educating the local clinicians in the techniques, and still be able to have sustainable care provided by the ongoing educational University of Latina efforts associated with this charitable and educational clinic.

The population located in Costa Rica afflicted with residual craniofacial and articulation disorders will be the direct beneficiaries. Future patients currently treated by the Children's Hospital who will outgrow their free benefits before obtaining final reconstructive results will also benefit. There are an estimated population in Costa Rica of over 100,000 suffering with articulation disorders affiliated with Cranio-Skeletofacial or dental disorders. The timeline will take place from December 2016 until June 2017



[View Online Proposal Form](#)

Primary Host Partner

District: 4240

Primary Contact: Juan Augusto Hernandez Hernandez

Rotary Club of: San Juan del Murcielago-Tibás

Email: ahernandez@hdezcpa.com

Primary International Partner

District: 5340

Primary Contact: Dr Jeff Moses

Rotary Club of: Carlsbad

Email: drjeffmoses@yahoo.com

Project Status

Need \$100,000

This project needs to receive some pledges to go to the next level. Please check the "Financing" tab to see the list of current pledges. Once the amount pledged is equal to the project budget, the status of the project will be automatically changed to "Fully Pledged".

[Click here](#) to pledge support for this project.

Project listed for the 2016-17 Rotary Year.

The TRF Grant application number is #16366.



APPLYING FOR A GLOBAL GRANT

project. You do not have to send the money until instructed to do so. You will be contacted when all the funding for this project has been identified. Thank you for your support!

Pledge Support for Project G-1037 - CostaRica Craniofacial Smiles

[Click here](#)

IF

you do want to make an **immediate** donation by **credit card** instead of a **pledge** for your club or district.



District Number	<input type="text" value="5340"/>	Rotary Club of	<input type="text" value="Del Mar"/>
Contact Name	<input type="text" value="Janice Kurth"/>	Contact Email	<input type="text" value="jkurth1@san.rr.co"/>
Amount contributed by this Club (if any) (Cash)	<input type="text" value="1 000"/>		
Amount contributed by this District (if any) (DDF)	<input type="text"/>		



APPLYING FOR A GLOBAL GRANT

G-1144

Empowering Salvadorans

Administration

+ Description Financing Documents Photos History Logs

Proposed Financing

Existing Contributions Towards This Project	Date	Cash	DDF	Total
San Salvador Cuscatlán (4240)	9-May-16	\$5,000	-	\$5,000
La Jolla Sunrise (5340)	9-May-16	\$10,000	\$10,000	\$20,000
Coronado (5340)	19-Sep-16	\$1,000	-	\$1,000
District 6960 DDF	21-Sep-16	-	\$5,000	\$5,000
Poulsbo-North Kitsap (5020)	21-Sep-16	\$3,715	-	\$3,715
Bainbridge Island (5020)	19-Oct-16	\$5,000	-	\$5,000
Torrey Pines (La Jolla) (5340)	18-Nov-16	\$10,000	\$10,000	\$20,000
Ciudad Merliot-Santa Tecla (4240)	22-Dec-16	\$500	-	\$500
Burlington (5050)	8-Feb-17	\$3,000	-	\$3,000
District 4240 DDF	8-Feb-17	-	\$10,000	\$10,000
District 5280 DDF	8-Feb-17	-	\$5,000	\$5,000
Remaining Amount to Raise				
<i>Additional Club Contribution (Needed) - Add a contribution</i>		\$41,786	-	\$41,786
Amount Requested from The Rotary Foundation		\$40,000	\$40,000	\$79,999
Total				\$200,000

DDF contributions in grey are pending approval of the corresponding district committee.

Note: as of July 1, 2015 there is a 5% additional support fee for cash contributions. This fee does not appear in the financials above because it does not apply if the funds are sent directly to the project account (without going through TRF, and therefore without Paul Harris credit). Clubs sending their cash contribution to TRF must be aware they will have to send an additional 5%.

ANOTHER KEY HINT:

When you are working on matchinggrants.org, click refresh if you don't see your work reflected on the screen!

GRANT SPONSORS NEED TO:

- Become [qualified](#) every year
- Partner with a club or district in another country
- Actively involve the host community in planning and implementing the activity
- Develop a project plan that includes a budget and a financial management plan
- Apply for a grant through the [Grant Center](#)
- Stay up to date in reporting for all active grants
- Limit their role as primary sponsors to no more than 10 active grants at a time

Grant Center

Welcome to the Grant Center! As Rotary members, we contribute our skills, expertise, and resources to solve some of the world's most serious problems. From providing clean water in local communities to promoting peace worldwide, Rotary grants can bring your project ideas to life. Use the Grant Center to apply for a grant, track its progress, report on it, and search for other grants in your district.

Del Mar

Rotary Club

District Number: 5340 District Status:  Qualified

My Grants

An overview of the Rotary district grants and global grants you're involved in.

[View My Grants](#)

Apply for a Grant

The Rotary Foundation offers grants that support humanitarian projects, scholarships, and vocational training teams.

[Apply for a Grant](#)

Grant Search

Search for grants sponsored by your district or by a club in your district.

[Search for a Grant](#)

Grant Resources

Questions about the grant process? We're here to help, from getting you started to final steps.

[View resources](#)

Del Mar

Rotary Club

District Number: 5340

District Status:  Qualified

Apply Now

Choose the types of grant you are applying for



Global Grants

Global grants fund large international humanitarian projects, scholarships, and vocational training teams that have sustainable and measurable results in one or more of Rotary's areas of focus.

- The application asks about your grant's objectives, participants, sustainability, budget, and financing.
- Make sure that the grant falls within Rotary's global grant guidelines, is technically feasible, your and your partner club are qualified to address this need, and issues aren't already being addressed by another organization.

Let's begin

APPLYING FOR A GLOBAL GRANT

Global Grant Application

All fields are required unless noted as "optional".

Step 1: Basic Information

Enter some basic information, and then we'll give your application a number.

What's the name of your project?

100/100 characters

What type of project are you planning?

Check all that apply. This will tell us what else we need to ask you.

- A humanitarian project**
Address community needs and produce sustainable, measurable outcomes
- Vocational training**
Build skills within a community by supporting a team of professionals that will travel abroad to train or learn from colleagues in the community they visit
- A scholarship**
Fund international graduate-level study by someone seeking a career within an area of focus

Select the primary host and international contacts for this project.

Name	Club	DistrictSponsor	Role
+Add Primary Contact	<input checked="" type="checkbox"/>		Notify Primary Contact

Switch host, international contacts, and committees.

Save & Continue

Exit

GRANT INFORMATION

GRANT NUMBER

...

GRANT STATUS

...

LAST ACTIVITY

17/03/2017

Grant Resources

Questions about the grant process? We're here to help, from getting you started to final steps.

[Application Supplement for Microcredit Projects](#)

[Areas of Focus Policy Statements](#)

[Conflict of Interest Policy for Program Participants](#)

[Cooperating Organization Memorandum of Understanding](#)

[Global Grant Calculator](#)

[Global Grant Lifecycle](#)

[Global Grant Monitoring and Evaluation Plan Supplement](#)

[Global Grant Scholarship Supplement](#)

[Grant Travel](#)



APPLYING FOR A GLOBAL GRANT

Step 2: Committee Members

Step 3: Project Overview

Step 4: Areas of Focus

Step 5: Measuring Success

Step 6: Location and Dates

Step 7: Participants

Step 8: Budget

Step 9: Funding

Step 10: Sustainability

Finalize & Submit

Step 11: Review and Lock

Step 12: Authorizations



Donate

Grants

Paul Harris Society

Polio Plus

Polio Plus Society

Resources & References

District Foundation Committee



Rotary5340.org

GRANTS

[Guide to Grants](#)

Global Grants

[Grant Policies District 5340 - 2023-2024](#)

[Grant Policies District 5340 2022-2023](#)

[Global Grants](#)

[Global Grants Training Seminar 2022 Youtube](#)

[Global Grants Seminar 2022 \(PDF\)](#)

[Global Grant Quiz](#)

[Club Memorandum of Understanding \(PDF\)](#)

[Club Memorandum of Understanding Worksheet \(PDF\)](#)

[MatchingGrants.org - Global](#)



The Rotary Foundation - Transforming the World



WELCOME TO GRANTS

District Grants and Global Grants from The Rotary Foundation (TRF) are a wonderful way of exciting and meaningful projects in your own community and/or with a Rotary Club in another

District Grants can leverage your club's cash (often doubling it!) for a project at a local or regional

Thank you for completing this quiz.



IMPORTANT ANNOUNCEMENT

DDF allocations for Global Grants for the 2026-2027 Rotary year will be considered starting immediately!

(If qualification requirements are complete.)

RESOURCES

- [My.rotary.org](https://my.rotary.org)
 - Grants Center
 - Learning Center
 - Cadre@rotary.org

- www.rotary5340.org
 - “Foundation”
 - “Resources & References”

- [YouTube](https://www.youtube.com)
 - “Rotary cultivating effective projects”

THE ROTARY FOUNDATION SAYS:

Thank you!

And I thank you too.

Contact me at janice@janicekurth.com with questions and/or clarifications.