

# LUTHERAN OUTDOOR MINISTRIES CENTER

815-732-2220

www.LOMC.org



Prayer Labyrinth

LOWER PRAIRIE

Levi's Cave



Paul's Pond

Serenity Hospice and Home

Tent & Trailer Pavilion

Dody House

Hospitality Center

Marander Lodge

FREEDOM TREE VILLAGE

Archery Range Basketball Court

Program Center

Pole Barn

Drama Drum & Playground

OFFICE

AED

PARKING

Please do not park at Dining Hall

DINING HALL

AED

Pool

The Roost

AED

MEADOWS VILLAGE

The Perch

AED

TIMBERS VILLAGE

Human Football

Milkhouse Trail

ENTRANCE

Lutheran Outdoor Ministries Center

UPPER PRAIRIE

Team Building Course & Esbjorn Fire Pit

SOCCER FIELD

Gaga Ball

Tree House

Barber Cliff

TO OREGON, IL

TO DIXON, IL



Road Up To Retreat Cabins

Gale Creek

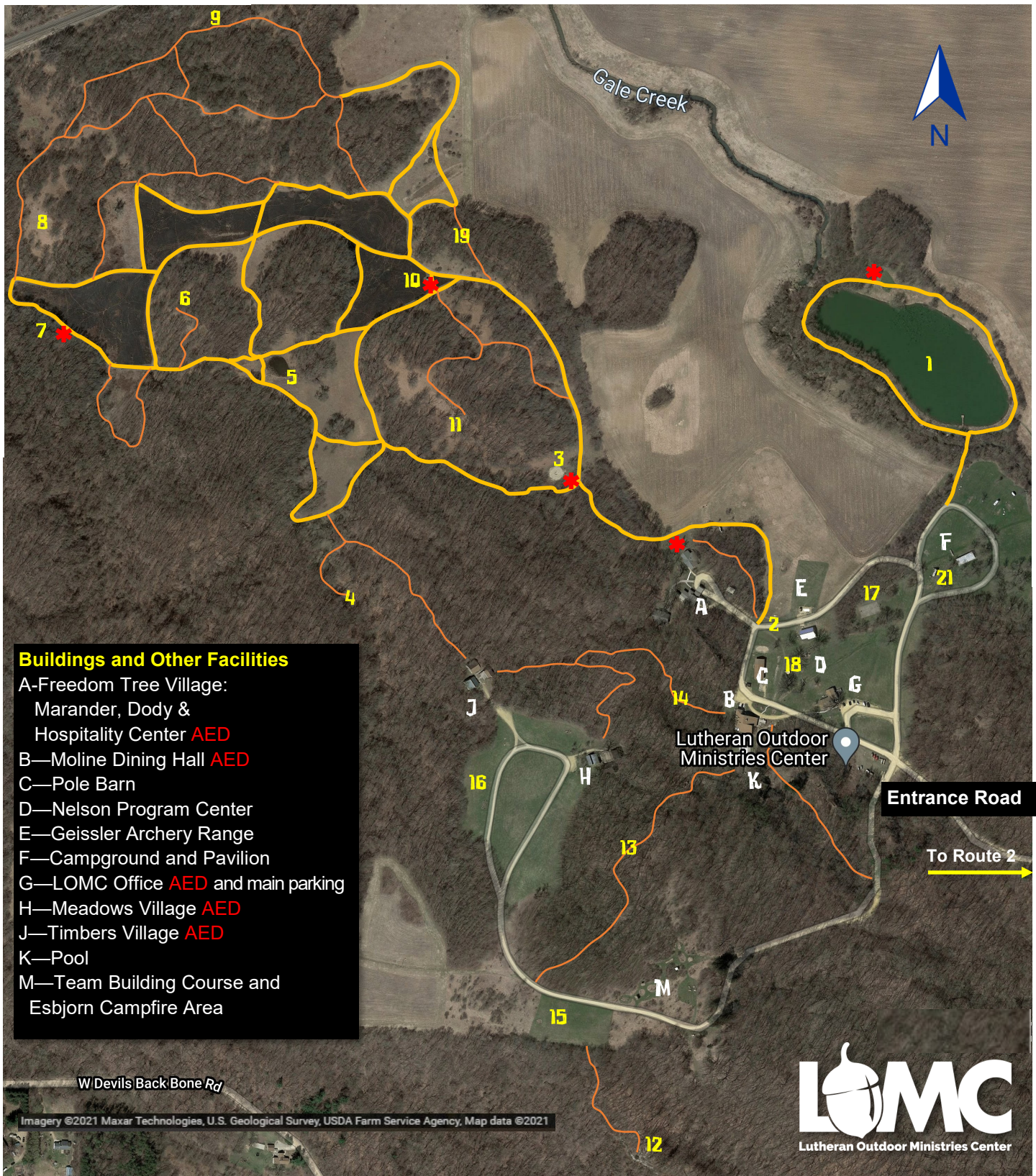
Gale Creek

Gale Creek

Gale Creek

Gale Creek





**Buildings and Other Facilities**

A—Freedom Tree Village:  
Marander, Dody &  
Hospitality Center **AED**

B—Moline Dining Hall **AED**

C—Pole Barn

D—Nelson Program Center

E—Geissler Archery Range

F—Campground and Pavilion

G—LOMC Office **AED** and main parking

H—Meadows Village **AED**

J—Timbers Village **AED**

K—Pool

M—Team Building Course and  
Esbjorn Campfire Area

**TRAILS and POINTS OF INTEREST**

- 1—Paul's Pond
- 2—Farmland Trail and Kukawa Trail
- 3—Prayer Labyrinth
- 4—Levi's Cave (sandstone formation)
- 5—Frog/Cricket Frog Pond
- 6—Turkey Point (sandstone formation)
- 7—Prairie Treehouse
- 8—Turtle Hill

- 9—Hay Shelter
- 10—Kiosk (and Trail Station)
- 11—Stoney Point (sandstone formation)
- 12—Barber's Cliff (sandstone formation)
- 13—Milkhouse Trail (scenic and steep)
- 14— Meadows and Timbers Village Trails
- 15—Gaga Ball Pit & Soccer Field
- 16—Human Foosball
- 17—Basketball Court

- 18—Playground and Drama Drum
  - 19—Lean-To Trail
  - 20—David's Loft
  - 21—Peterson's Overlook (picnic and more)
- \***—Interpretative Trail Stations

**Trails in yellow are wider, mowed paths.**  
**Trails in orange are woodland paths.**