

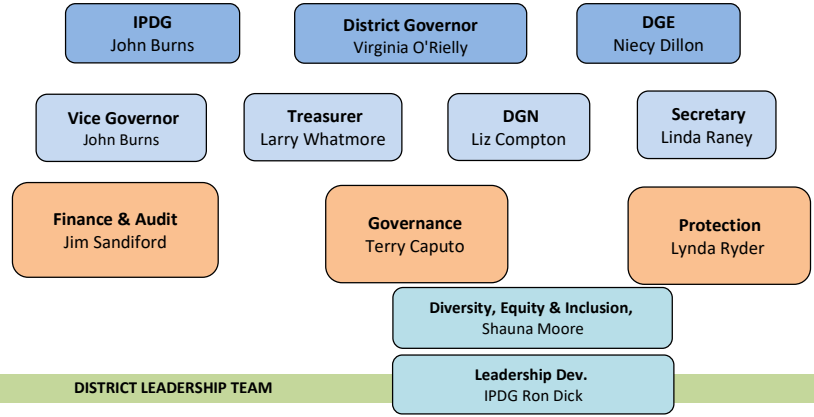
# ROTARY DISTRICT 7070 ORGANIZATIONAL CHART 2024-2025

Assistant Governors	
1 Sandi Ramsay	9 Sudeep Oommen
2 Jeremy Taft	10 Susan Roper
3 Rob Pope	11 Nilam Bedi
4 Shauna Moore	12 Fran Taylor
5 Rachel Boyd	13 Tina Martin
6 Ferdinando Longo	14 Kenneth Chin
7 Matt Emerson	15 Liz Compton
8 Joan Barrett	16 Jobson Easow

Liz Compton/Niecy Dillon AG Coaches

<b>Rotary International</b>
<b>RI President</b> Stephanie Urchick
<b>Zone 28 Director</b> Chris Etienne
<b>Zone 28 Coordinators</b> 28 Coordinator - Doug Logan Asst. Coordinator Rudy Habesch Public Image Coord - Mary Lou Harrison Regional Foundation Coord - Ingrid Neitsch

## THE CLUBS OF ROTARY DISTRICT 7070



### DISTRICT LEADERSHIP TEAM

