

***UNITE
FOR
GOOD***



Final Quarterly Meeting 25-26

District International Service & Foundation Committees

April 18, 2026



Increasing Our Impact

Expand Our Reach

Enhance Participant Engagement

Increase Our Ability to Adapt

Increasing Our Capacity by Learning More

Goals for our District International Service Committee *we'll fill in*

- Club ISC/Foundation Chairs
 - using *Service Project Center* 24-25 = 2 25-26 = 8
 - joining Rotary Action Groups/Fellowships 24-25 = 3 25-26 = 0/13
 - completing more *Learning Center* courses 24-25 = 12 25-26 = 15
- Attendance at Project Fairs 24-25 = 3 25-26 = 6
- Club articles in District Newsletters with photos 24-25 = 1 25-26 = 1
- Develop capacity to understand **INCREASE OUR IMPACT & Building Blocks of a Project** 24-25 = 9 25-26 = 11

Expand Our Reach

- How might you accomplish this doing projects?
 - Who in your club is handling a social media plan for all stages of project?
 - Bigger, better, bolder community and international projects!

Enhance Participant Engagement...by Increasing Club Knowledge

- Anyone ending their term as Club International Club Chair in June?
- Who are you mentoring?
- What more are you looking for from our International Service meetings?

Enhance Participant Engagement



More than Global Grant use!!

What have you found useful in the handbook?

How have your Club Committee members reacted to this publication?

Truly connecting with your beneficiaries

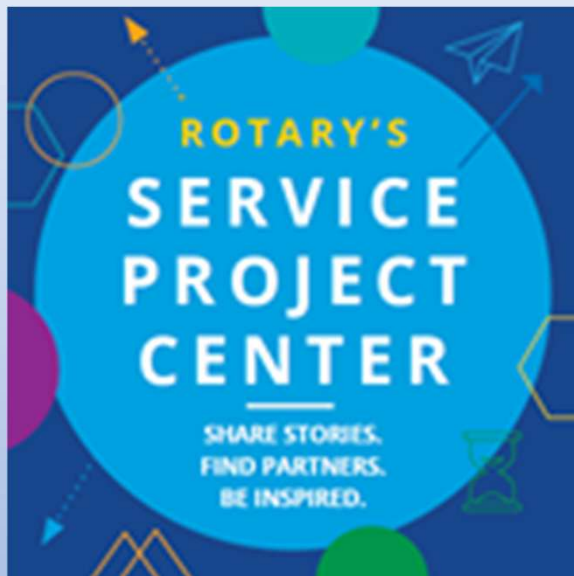
‘We’ve been heard’

Increase Our Impact & Ability to Adapt

- Complete the **SERVICE PROJECT ESSENTIALS** Learning Plan
 - Service with Rotary
 - Planning Your Service Efforts
 - Creating a Project Budget
 - Evaluating Your Project

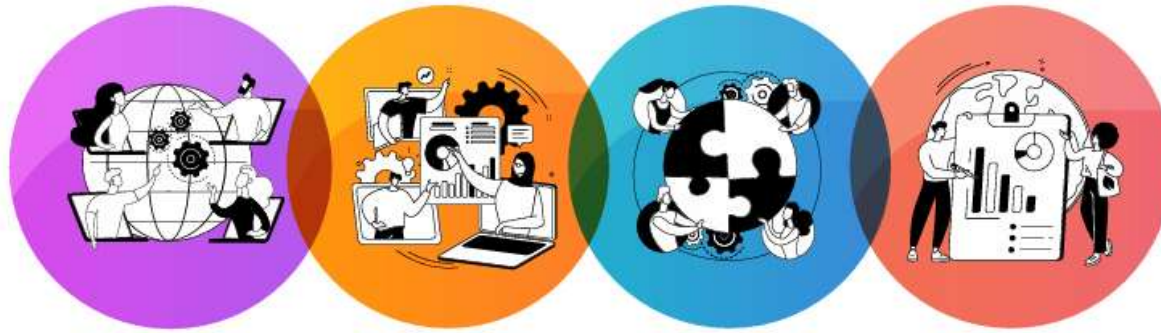


Increase Our Ability to Adapt



Who has placed their project(s) on spc.rotary.org?

Increase Our Ability to Adapt



SERVICE AND
ENGAGEMENT

Hands-On Service Project Center

- How many D7040 clubs have projects listed?
- What's the difference between *Rotary Campaigns* and *Service Projects*?
- What's listed under *My Club Projects* (if you're signed in)?
- What's stands out to you in the *Grant Center*?
 - How could you use this?
- Check *Resources*
 - What are you going to spend some time exploring?

International Service: 2026-2027 Project Fairs

Coming Soon!

[Project fairs around the world](https://storymaps.arcgis.com/storiesa8e5334922114f0aa7bb14d7f6b7488f)

[https://storymaps.arcgis.com/storiesa8e53349
22114f0aa7bb14d7f6b7488f](https://storymaps.arcgis.com/storiesa8e5334922114f0aa7bb14d7f6b7488f)

District Resource Networks



District Resource Network *for D7040*

- Intercountry committee members
- Project Fairs
- Cadre of Technical Advisors
 - Bette, Peter, Bonnie
- Rotary Action Groups
 - *Join at least one!*
- Rotary discussion groups/forums on Action Group websites
- District Conferences
- RI Convention
- Zone Institutes
- Rotary Alumni, incl. YE
- District Rotary Foundation Chair, Pardeep
- District Grants Chair, Carol
- District Internat'l Svce Chair, Bonnie
- **Regional Grants Officer, Renee Reiling, RI Evanston**
- Area of Focus Managers at RI
- Other District clubs/Rotarians having completed successful grants similar to what your club wants to do...

Learning by Query – Additional DRN!

Global International Service Support Network

Second Thursday of every month via Zoom at 3pm

Email me for link: bonblack@yahoo.com

May 3rd

Renee Reiling will walk us through how projects are reviewed, how eligibility and alignment with grant criteria are assessed and how decisions are made throughout the process. She'll also **answer YOUR questions about the grant process, what they're looking for on submitted grants, etc.** *(she won't be able to address specific questions regarding your club projects already submitted)*

Learning by Query

When Disaster Strikes...



Rotaract Lebanon  Rotary Lebanon  Interact Lebanon 

UNITE FOR LEBANON

Rotarians, Rotaractors & Interactors are collaborating on a national level to make sure that displaced families across Lebanon have access to primary needs, such as:

- Nutritional Items
- Medical Items
- Hygiene Items
- Babies Necessesecites
- Clothing & Warmth
- Shelter & Water Sanitation

WE NEED YOUR SUPPORT

Join our efforts to provide primary needs to displaced families all over **Lebanon**.

[DONATE NOW](#)
www.unite4leb.com



Lebanon in Crisis

Destruction. Displacement. A Call for Rotary Action.



SERVICE ABOVE SELF

The Scale of Devastation

Lebanon Crisis — September–November 2024



1.2M+

People displaced from their homes



10,000+

Civilian structures damaged or destroyed



4,000+

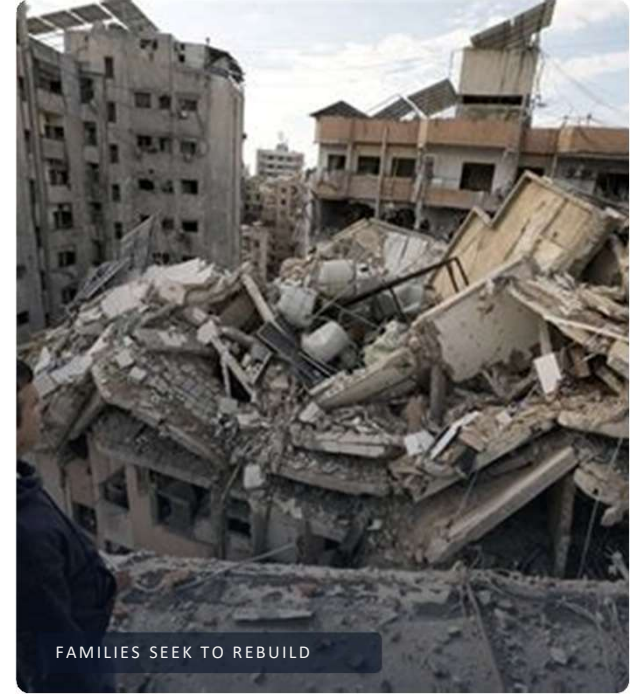
Civilian lives lost



80%

Of displaced are women and children

Beirut Under Fire



Entire neighborhoods in Beirut have been reduced to rubble. Families lost everything overnight — homes, livelihoods, and loved ones.

Baalbek: Heritage & Humanity at Risk

An ancient city under siege — centuries of history and living communities face devastation

UNESCO WORLD HERITAGE SITE



Aftermath of airstrikes in Baalbek



Ottoman-era building destroyed near Baalbek ruins



Widespread destruction across the Baalbek region

The ancient city of Baalbek — a UNESCO World Heritage site — and surrounding communities have suffered devastating strikes. Centuries of cultural heritage and countless families are at risk. What took generations to build has been lost in moments.

BEYOND BEIRUT

Destruction Across Lebanon



" From southern border villages to the Bekaa Valley, communities across Lebanon have been devastated. Entire towns have been flattened, displacing generations of families. The destruction extends far beyond Beirut — this is a nationwide crisis. "

 SOUTH LEBANON · BEKAA VALLEY · BORDER REGIONS · MOUNT LEBANON

THE HUMAN TOLL

Behind Every Number Is a Family



1.59 million people face acute food insecurity — families are skipping meals daily as conflict and economic collapse devastate livelihoods



Over 100,000 homes damaged or destroyed — families sleeping in schools, parks, and streets with nowhere to return



Hospitals overwhelmed — critical medical supplies running dangerously low as health infrastructure crumbles under sustained strikes



Over 400,000 children displaced — many separated from their families, forced out of school, and facing an uncertain future



Psychological trauma is widespread — entire communities shattered by loss, grief, and the relentless violence of sustained conflict

Every Dollar Makes a Difference

Your contribution delivers real, measurable impact to families in Lebanon



\$25

Feeds **one family** for one week with essential staples



\$50

Provides a **two-week** emergency food package for a family



\$500

Delivers food supplies to an **entire neighborhood**

★ TARGET GOAL

100

\$10,000 USD

Feeds **100 families** for 14 days — a full community sustained

♥ COMMUNITY IMPACT

100% of donations go directly to food aid — delivered through trusted Rotary channels

Three Steps to Make an Impact

Your club has the power to change lives — here's how to start.

1



COMMIT

Please ask your club and club members to support this initiative

2



COLLECT

My target is **\$10,000** USDt

3



CONTRIBUTE

Send funds to The Rotary Club of West Ottawa –We will send the funds through a trusted & transparent, and accountable. A local member of Rotary



Every contribution, no matter the size, brings **hope** to a family in need.



\$10,000 USD

Can Feed 100 Families for 14 Days

Right now, families in Lebanon are going hungry. Children are sleeping without meals. Communities that once thrived are struggling to survive. **YOUR club can change that.** Together, as Rotarians united in *Service Above Self*, we can deliver food, hope, and dignity to 100 families for two full weeks.

Will your club answer the call?



Past District Governor Hadi Mortada today. hmortada@aol.com



Bombing Impact in Lebanon

Widespread Destruction

The bombing severely damaged homes, infrastructure, and public services, impacting daily life in the affected area.

Humanitarian Crisis

Many residents were displaced and are facing urgent humanitarian needs such as shelter, medical care, and basic supplies.

Relief and Response Efforts

Emergency responders and aid organizations are actively providing relief and support to affected communities.

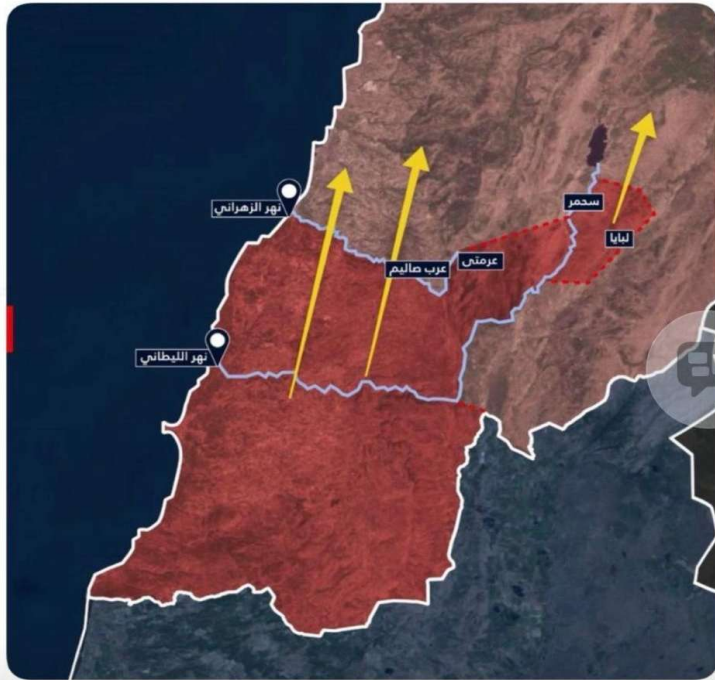
Rising Tensions

The bombing has led to increased political and social tensions in the region, impacting community relations and stability.

“These alerts reached people on their mobile phones, warning them to flee their homes and villages before it was too late.”

DailyLeb
NEWS

انذار جديد



“Residents in Tyre, Southern Lebanon, received evacuation messages only minutes before their homes were bombed.”

انذار عاجل لسكان مدينة صور



A common sight you see all over the city. All green spaces are filled with tents.

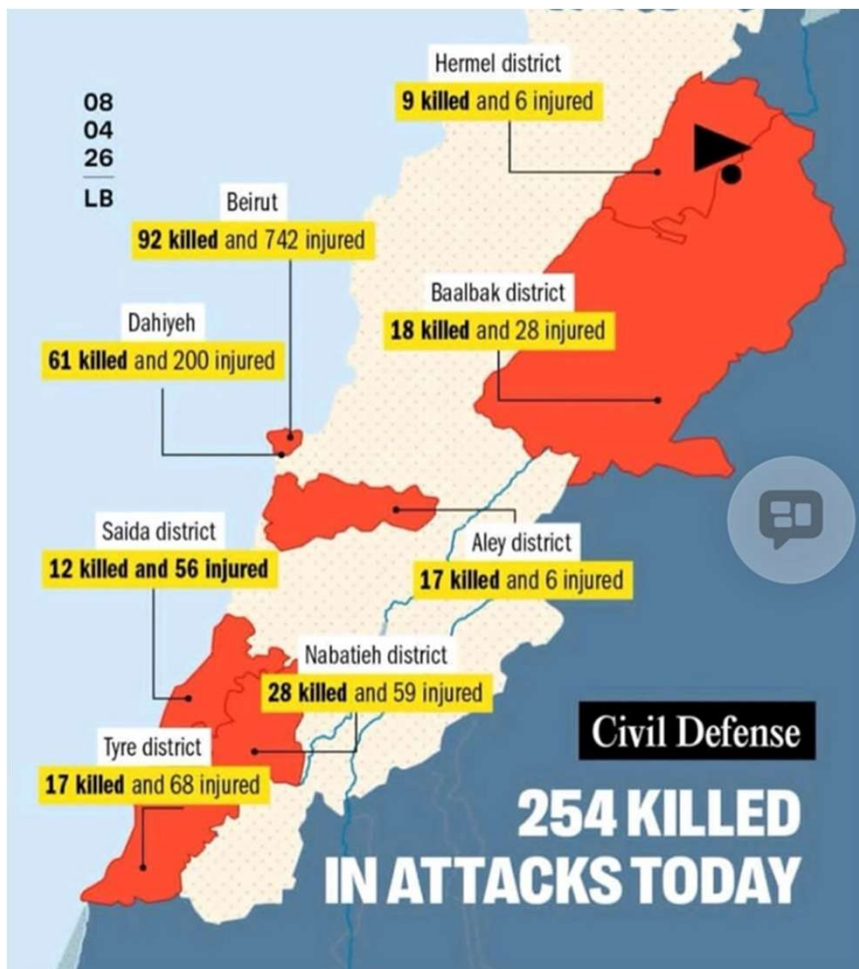




[HOME](#) | [INTERNATIONAL](#)

'This is wrong,' Lebanese resident says as hundreds of thousands displaced amid Israeli strikes

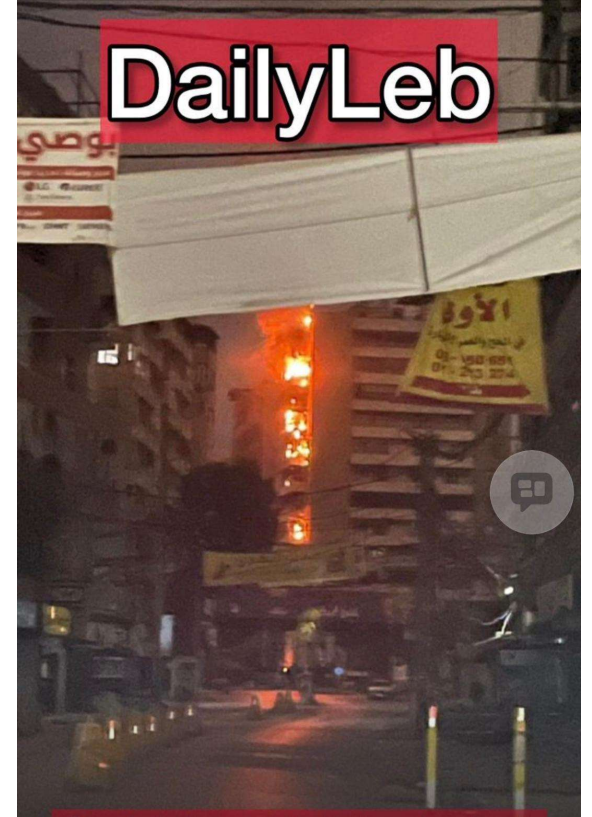
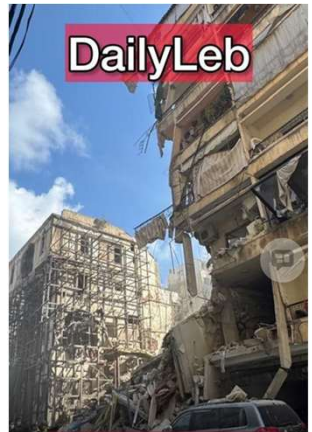




Yesterday, Israel launched its largest attack on Lebanon since its conflict with Hezbollah began.

1 IN 5 PEOPLE have been forced from their homes. With new evacuation warnings in place for Beirut, we can expect this number to rise.





DailyLeb

Beirut's Skyline the evening
of April 8, 2026



Southern Lebanon- Taybeh Village

بلدة الطيبة الحدودية

31-03-2026



Rotaract 
Lebanon

Rotary 
Lebanon

Interact 
Lebanon

UNITE FOR LEBANON

Rotarians, Rotaractors & Interactors are collaborating on a national level to make sure that displaced families across Lebanon have access to primary needs, such as:

- Nutritional Items
- Medical Items
- Hygiene Items
- Babies Necessesities
- Clothing & Warmth
- Shelter & Water Sanitation

WE NEED YOUR SUPPORT

Join our efforts to provide primary needs to displaced families all over Lebanon.

[DONATE NOW](#)

www.unite4leb.com

Rotary Emergency

Club of Beirut Cedars

As of March 18, 2026, Rotary Club Beirut Cedars contributed with:

- 🇇🇵 120 Double Ply locally manufactured (to be distributed by Bassma NGO), with \$1,000.
- 💧 3 water Aquabox filters (Saida), from stock.
- 💧👨👩👧👦 3 water Aquabox family filters incl. kitchen utensils (Saida), from stock.
- 🏫 Shelter schools (in Saida area): Sanitary system renovation and adaptation with \$1,000 (RC of Saida).
- 🏫 Shelter schools (in Tyre area): Washing machines equipment and pillows, with \$1,000.
- 🍲 150 Food Boxes for displaced military families (in collaboration with the Lebanese Food Bank), with \$3,000.
- 🧴 100 Hygiene Kits for the displaced families (in Qob Elia area), (in collaboration with RC Lebanon Eco), with \$1,000.
- 🍽️ Contribution to La Cuisine de Maryam: \$4,000 remitted to Père Hani Tawk.
- 🏠 Medicine to Qlayaa village for \$5,000



March 19, '26 P Ghassan Hajjar: A first batch of 120 Blankets manufactured and delivered today. I will hand them to Bassma NGO and displaced people will be picking them up while collecting other needs like food boxes and hygiene kits. Thank you PP Rodolphe Melki for the coordination.



March 24, '26 100 hygiene kits to Qob Elias & Chraura from RC Lebanon Eco & Beirut Cedars

Every Dollar Makes a Difference

Your contribution delivers real, measurable impact to families in Lebanon



\$25

Feeds **one family** for one week with essential staples



\$50

Provides a **two-week** emergency food package for a family



\$500

Delivers food supplies to an **entire neighborhood**

★ TARGET GOAL

100

\$10,000 USD

Feeds **100 families** for 14 days — a full community sustained

♥ COMMUNITY IMPACT

100% of donations go directly to food aid — delivered through trusted Rotary channels

WHY ROTARY MUST ACT NOW

Service Above Self is not just our motto — it is our mandate when humanity calls.

As Rotarians, we are uniquely positioned to respond. Our global network, our values, and our commitment to humanitarian service make this **OUR moment to act.**

The Four-Way Test compels us: Is it **FAIR**? Will it build **GOODWILL**? Will it be **BENEFICIAL** to all concerned?



\$10,000 USD

Service Above Self—when Lebanon calls, we answer.
Goal: \$10,000 to feed 100 families for 14 days.

Ask your club to join and give what you can.
Send funds via the Rotary Club of West Ottawa.

Questions?



PDG Hadi Mortada

Next Meeting
September 12th
register now!

LUNCH

Building Blocks to Impact Activity

- Please break into 4 larger tables (*push 2 tables together*)
- Discuss the Building Blocks diagram first
- THEN place the headers (Input, Output, Outcome & Impact)
- B E G I N by reading the scenario...

Any Ponderables??

- Let's discuss related to the Answers...

- How could have the project been:
 - Stronger?
 - Easier to implement?
 - Involved more Rotarians?